

**GENERAL NOTES**

Fasteners shall be AASHTO M164 Type 3 bolts. Bolts 3/4 in.  $\phi$ , holes 5/8 in.  $\phi$ , unless otherwise noted.

Calculated weight of Structural Steel = 112,170 pounds (AASHTO M 270 Grade 50W)

All structural steel shall be AASHTO M 270 Grade 50W. All structural steel shall be cleaned as specified in Article 506.07.

No field welding is permitted except as specified in the contract documents.

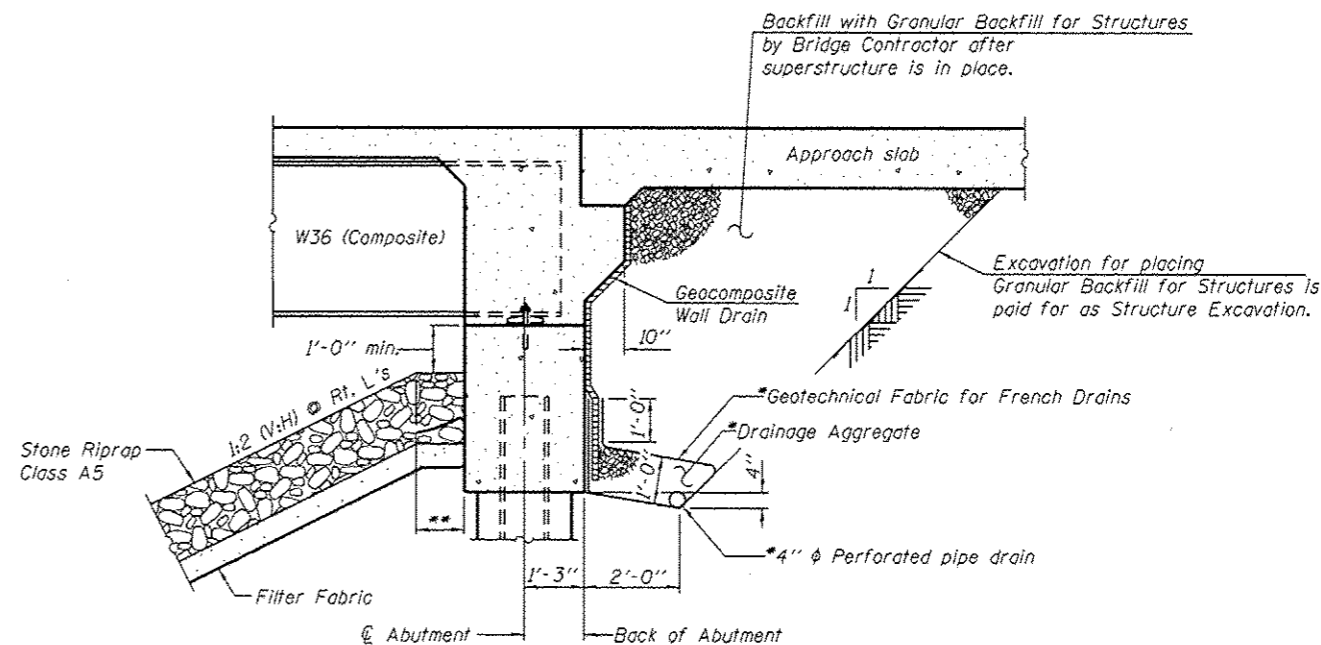
Reinforcement bars shall conform to the requirements of ASTM A 706 Gr 60.

Reinforcement bars designated (E) shall be epoxy coated.

Structural steel shall only be painted for a distance equal to the depth of embedment into the concrete cap plus 3 inches. Painted areas shall be primed in the shop with a Department approved zinc rich primer. Field painting will not be required.

Layout of slope protection system may be varied to suit ground conditions in the field as directed by the Engineer.

The embankment configuration shown shall be the minimum that must be placed and compacted prior to construction of the abutments.



**SECTION THRU ABUTMENT**

\*Included in the cost of Pipe Underdrains for Structures.

\*\*3'-6 1/4" at West Abutment  
3'-1 1/4" at East Abutment

Note:  
All drainage system components shall extend to 2'-0" from the end of each wingwall except an outlet pipe shall extend until intersecting with the side slopes. The pipes shall drain into concrete headwalls. (See Article 601.05 of the Standard Specifications and Highway Standard 601101).

10/29/2012 P:\P-10\2356 - Smithville Road Bridge\GEN\AC\003 Sheets\Structure\10723148-2356-002-GeneralNotes.dgn 5:01:47 PM

|  |              |                |           |   |  |                           |                |        |              |           |
|--|--------------|----------------|-----------|---|--|---------------------------|----------------|--------|--------------|-----------|
| <p><b>INFRASTRUCTURE ENGINEERING</b><br/>456 Fulton Street   Suite 104   Peoria, IL 61602<br/>P: 308.533.8900   F: 308.533.8100   www.infrastructure.com</p> | USER NAME =  | DESIGNED - LAN | REVISED - | <b>PEORIA COUNTY<br/>HIGHWAY DEPARTMENT</b> | <b>GENERAL NOTES AND ABUTMENT DRAINAGE DETAIL</b><br><b>STRUCTURE NO. 072-3148</b> | F.A.S. RTE.               | SECTION        | COUNTY | TOTAL SHEETS | SHEET NO. |
|  |              | CHECKED - SPK  | REVISED - |   |  | 1381                      | 10-00005-03-BR | PEORIA | 55           | 24        |
|  | PLOT SCALE = | DRAWN - LAN    | REVISED - |   |  | CONTRACT NO. 89464        |                |        |              |           |
|  | PLOT DATE =  | CHECKED - SPK  | REVISED - |   |  | ILLINOIS FED. AID PROJECT |                |        |              |           |
|  |              |                |           |   | SHEET NO. 2 OF 18 SHEETS   |                           |                |        |              |           |