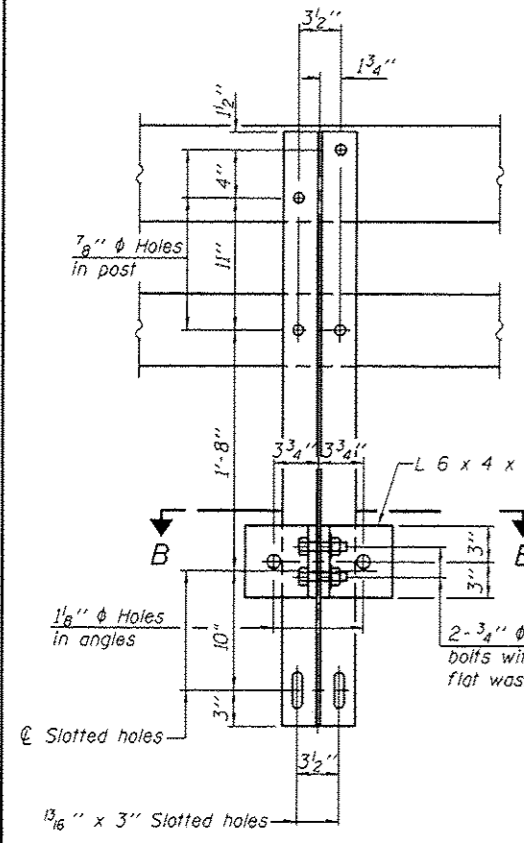
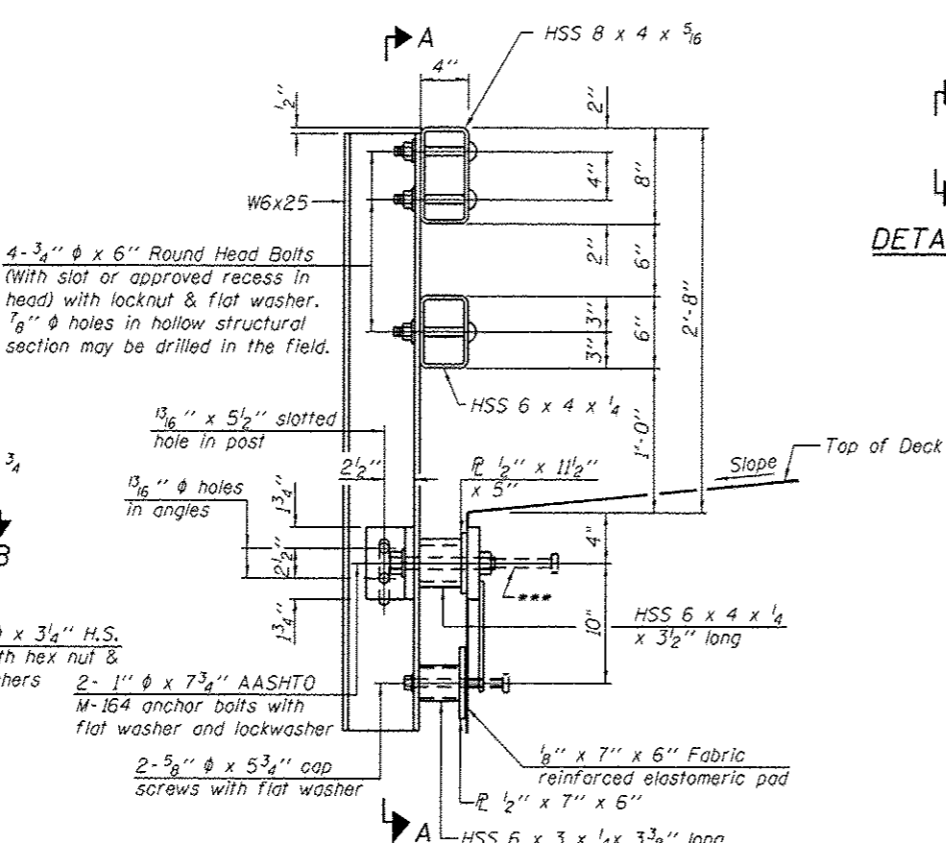


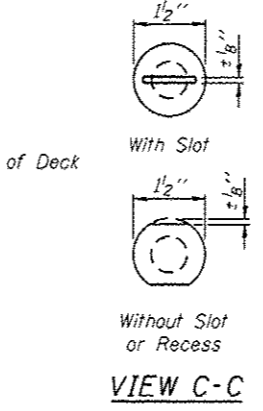
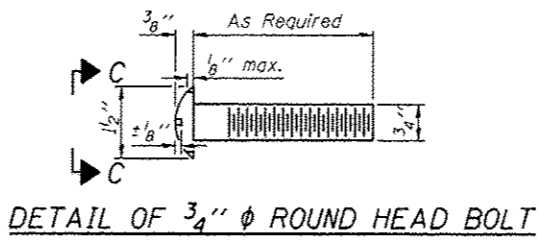
P:\P-10\2356 - Smith\11a Road Bridge\CON\CADD Sheets\Structure\10723146-2356-010-SteelRail\SMR.dwg  
 5/20/12 PM



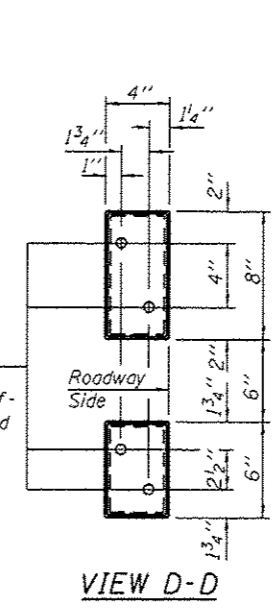
**SECTION A-A**



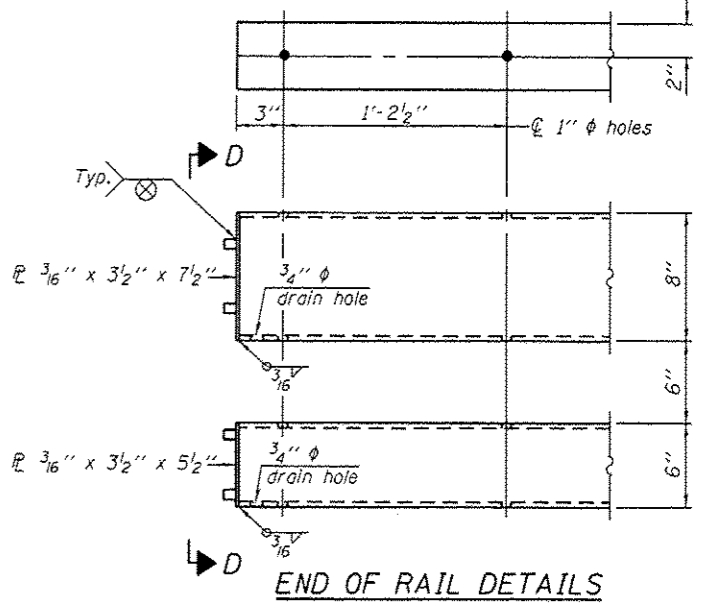
**SECTION AT RAIL POST**



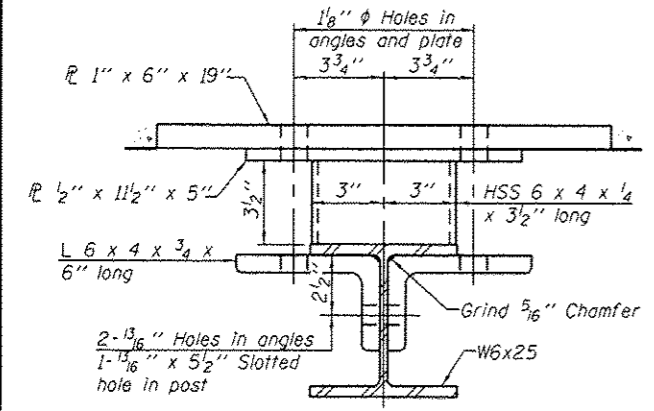
**VIEW C-C**



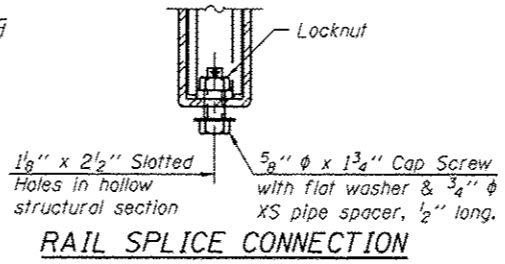
**VIEW D-D**



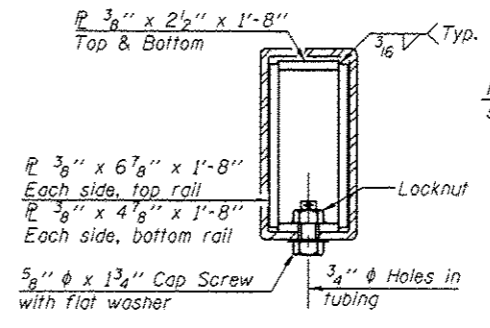
**END OF RAIL DETAILS**



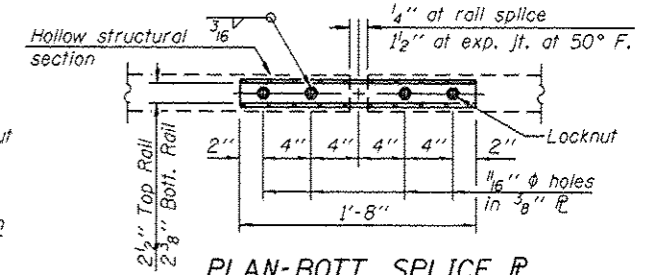
**SECTION B-B**



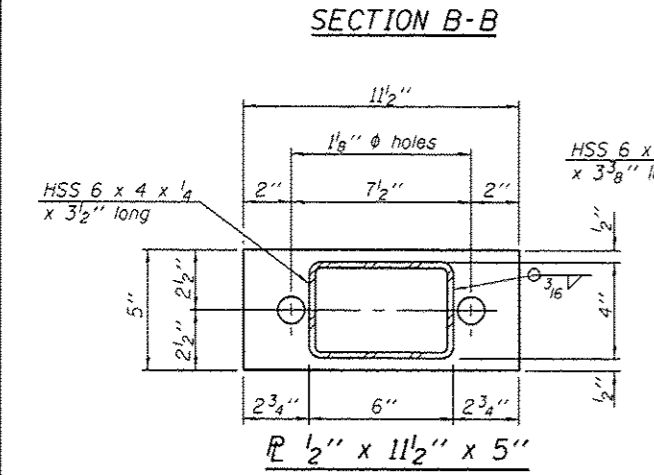
**RAIL SPLICE CONNECTION AT EXPANSION JT.**



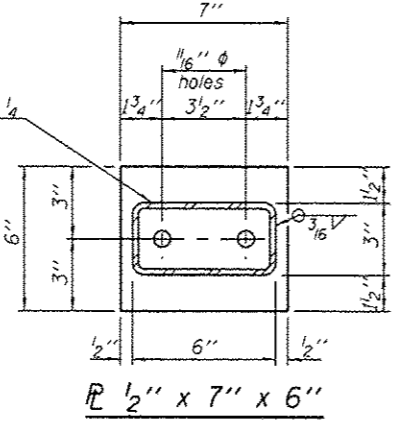
**SECTION AT RAIL SPLICE**



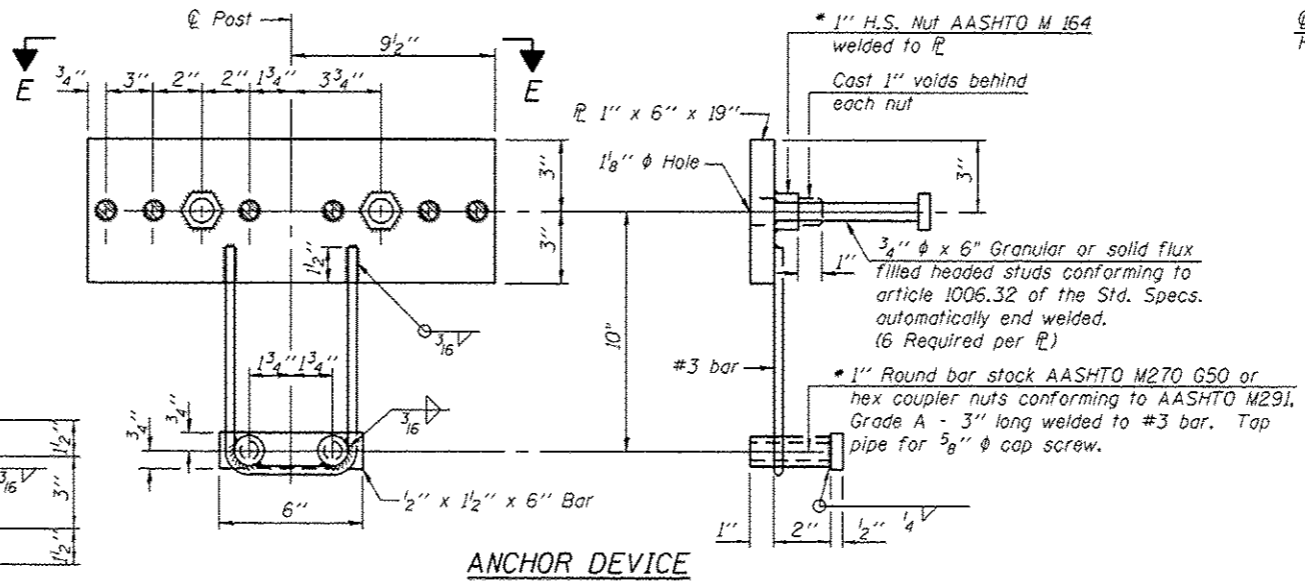
**PLAN-BOTT. SPLICE TYPICAL**



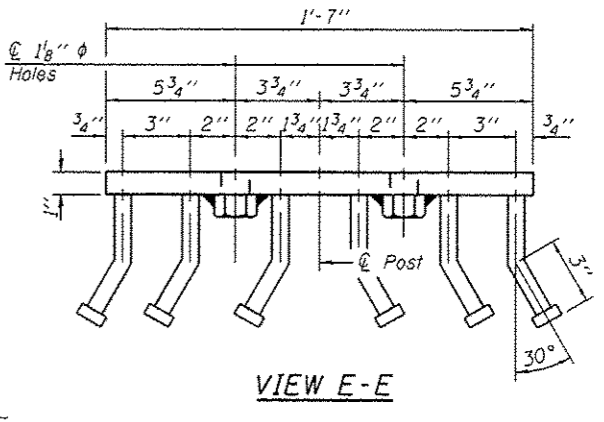
**SECTION B-B**



**SECTION B-B**



**ANCHOR DEVICE**



**VIEW E-E**

Notes:  
 All field drilled holes shall be coated with an approved zinc rich paint before erection.  
 All steel rail members shall be galvanized according to Article 509.05 of the Standard Specifications.  
 \*\*\* The studs of the anchor devices shall be placed below the top reinforcement bars and the outermost longitudinal reinforcement bar shall be placed directly above the studs of the rail post anchor device.

**BILL OF MATERIAL**

Item	Unit	Quantity
Steel Railing, Type SM	Foot	245

\*Threaded areas shall be plugged or blocked off during concrete placement. Galvanized after fabrication.