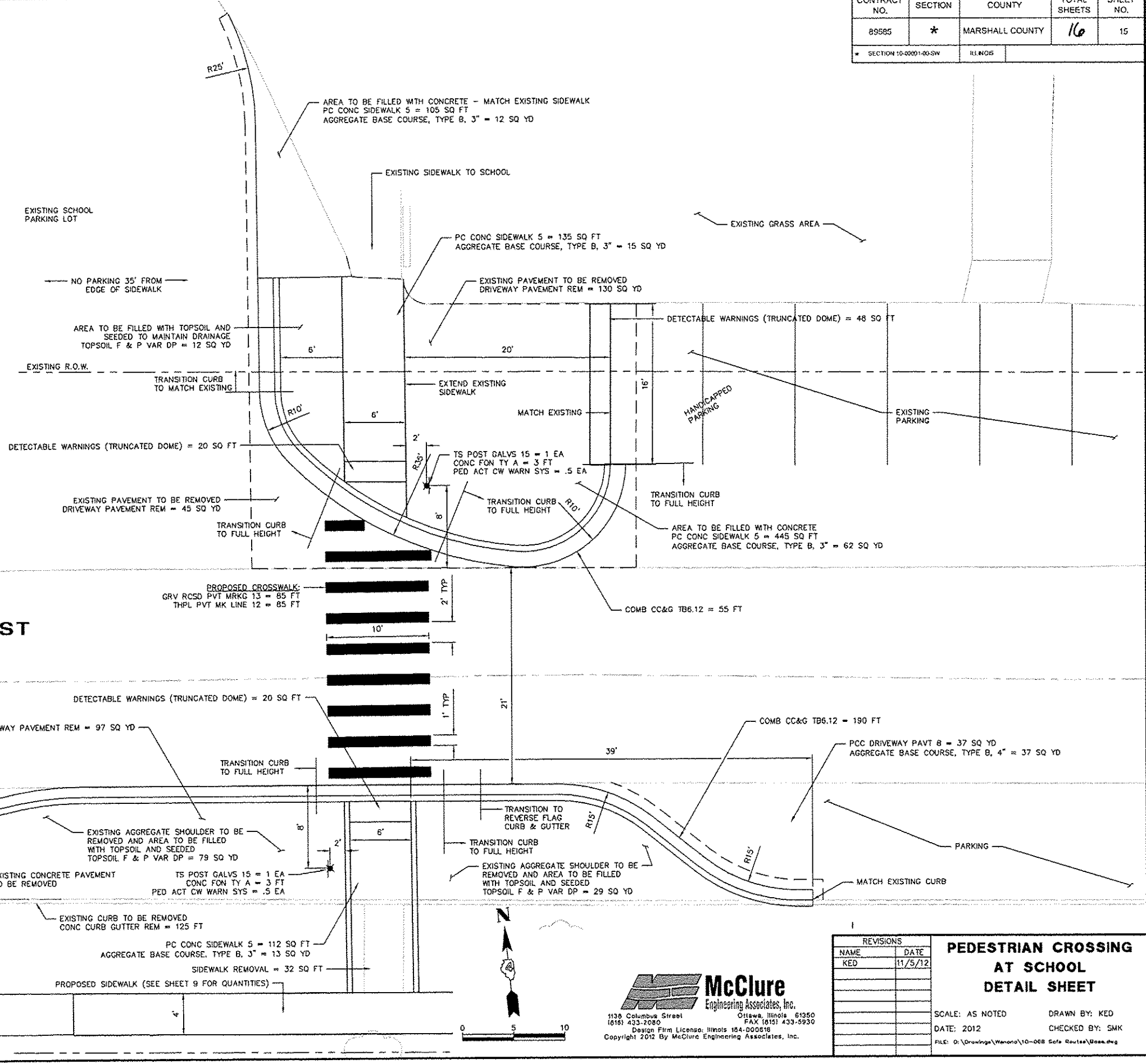
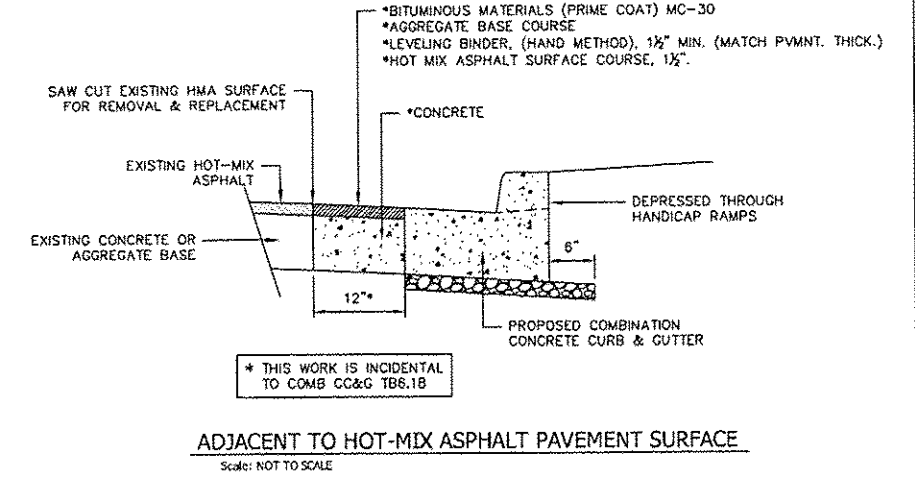


CONTRACT NO.	SECTION	COUNTY	TOTAL SHEETS	SHEET NO.
89585	*	MARSHALL COUNTY	16	15
SECTION 10-0001-00-SW		ILLINOIS		

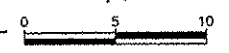


REVISIONS	
NAME	DATE
KED	11/5/12

**PEDESTRIAN CROSSING AT SCHOOL
DETAIL SHEET**

SCALE: AS NOTED DRAWN BY: KED
 DATE: 2012 CHECKED BY: SMK
 FILE: D:\Drawings\Wanona\10-008 Safe Routes\Bases.dwg

McClure
Engineering Associates, Inc.
 1138 Columbia Street Ottawa, Illinois 61350
 16161 433-2080 FAX 16161 433-5930
 Design Firm License: Illinois 164-000618
 Copyright 2012 By McClure Engineering Associates, Inc.



MARSHALL COUNTY SECTION 10-0001-00-SW