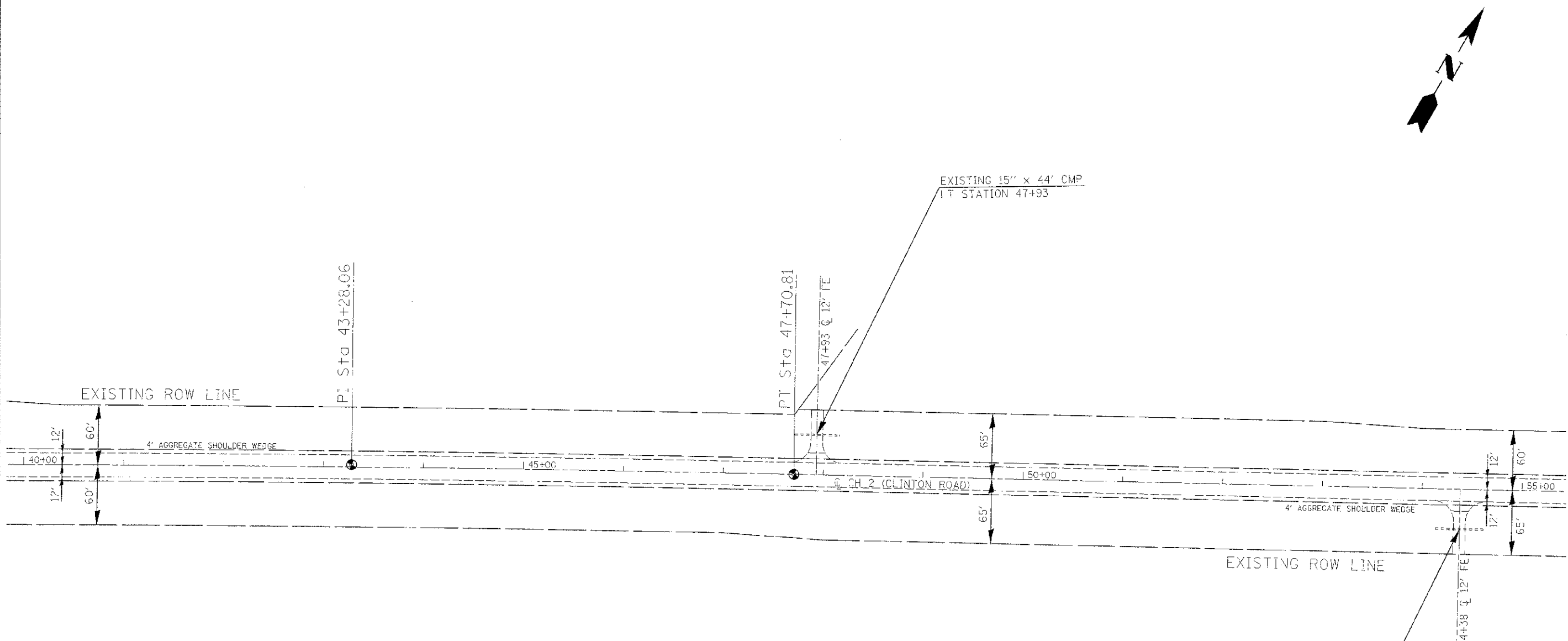


SECTION 29, T. 14 N., R. 11 W., 2nd P.M.

ROUTE	SECTION	COUNTY	TOTAL SHEETS	SHEET NO.
FAS 684 (CH 2)	10-00103-02-RS	EDGAR	41	11
EDGAR COUNTY, ILLINOIS		FED. AID PROJECT		

CONTRACT NO. 91471



EXIST. CURVE CURVE1
 PI STA. = 43+28.06
 $\Delta = 1^{\circ} 09' 22''$ (RT)
 $D = 0^{\circ} 07' 50''$
 $R = 43,886.03'$
 $T = 442.78'$
 $L = 885.53'$
 $E = 2.23'$
 SE = NORMAL CROWN
 P.C. STA. = 38+85.28
 P.T. STA. = 47+70.81

SCALE: 1"=50'



SECTION 29, T. 14 N., R. 11 W., 2nd P.M.