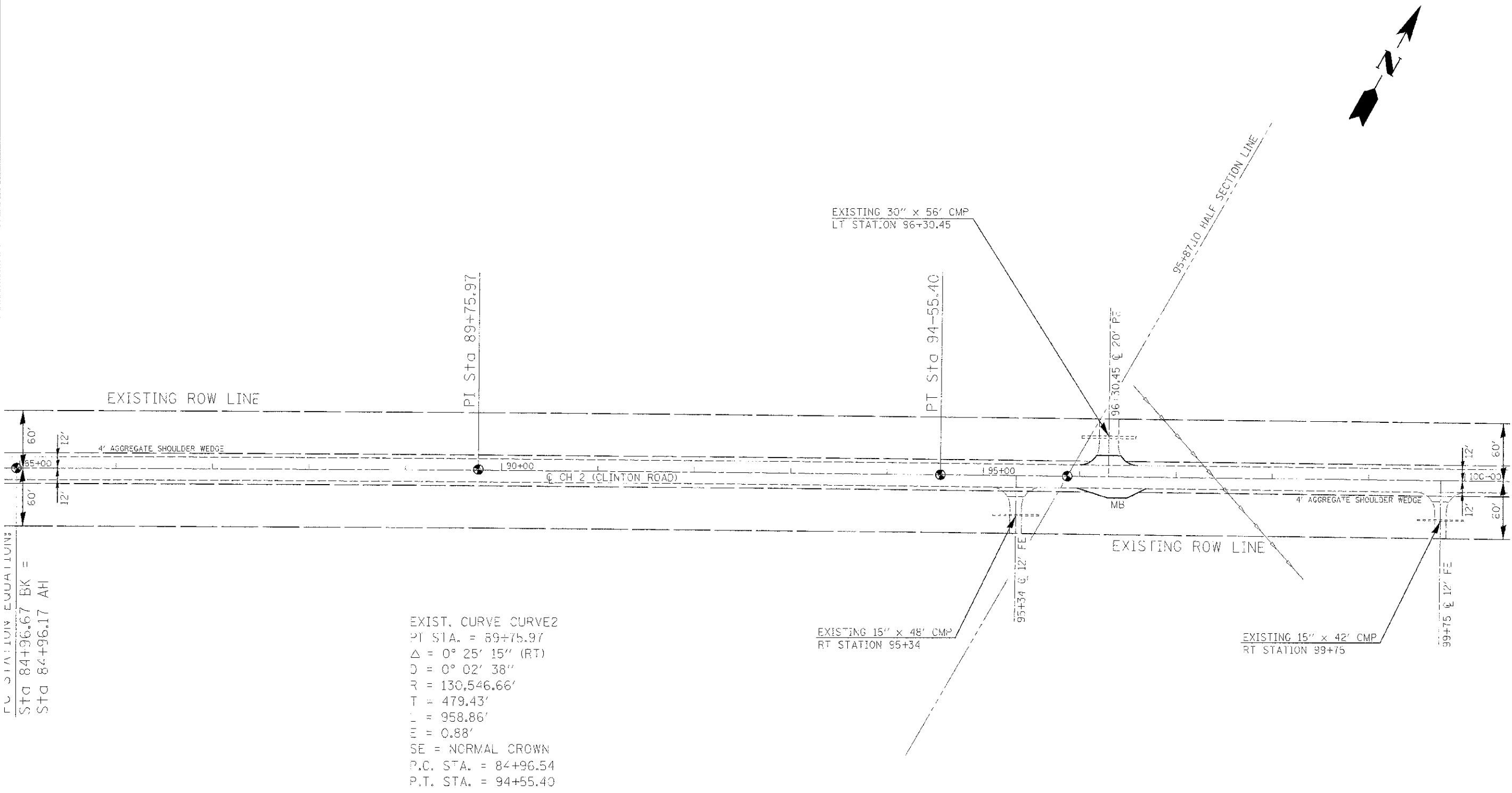


SECTION 28, T. 14 N., R. 11 W., 2nd P.M.

ROUTE	SECTION	COUNTY	TOTAL SHEETS	SHEET NO.
FAS 684 (CH 2)	10-00103-02-RS	EDGAR	41	14
EDGAR COUNTY, ILLINOIS		FED. AID PROJECT		

CONTRACT NO. 91471



LC STATION EQUATION:
 STA 84+96.67 BK =
 STA 84+96.17 AH

EXIST. CURVE CURVE2
 PT STA. = 89+75.97
 $\Delta = 0^\circ 25' 15''$ (RT)
 $D = 0^\circ 02' 38''$
 $R = 130,546.66'$
 $T = 479.43'$
 $L = 958.86'$
 $E = 0.88'$
 SE = NORMAL CROWN
 P.C. STA. = 84+96.54
 P.T. STA. = 94+55.40

SCALE: 1"=50'



SECTION 28, T. 14 N., R. 11 W., 2nd P.M.