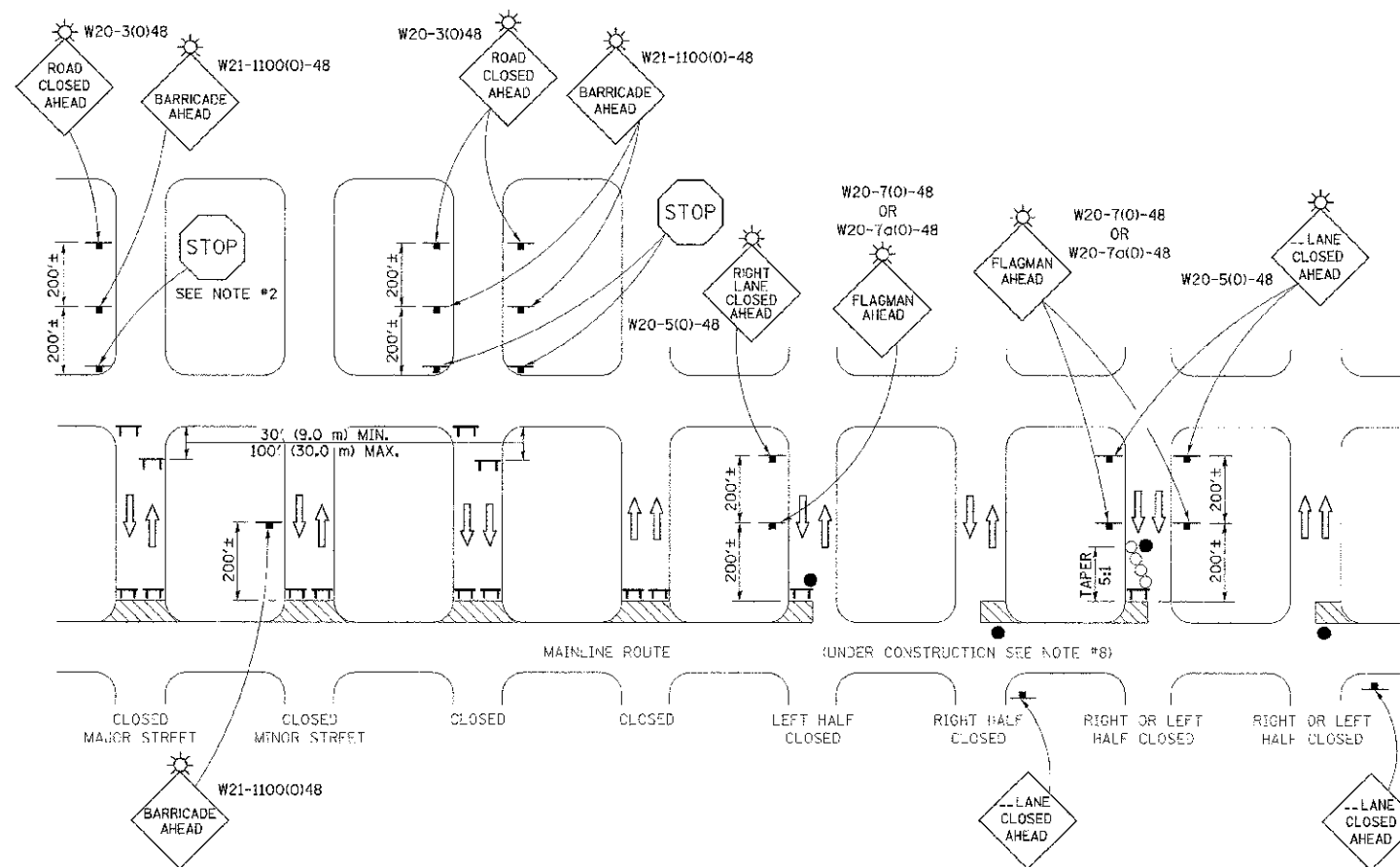


# TRAFFIC CONTROL FOR SIDEROADS

ROUTE	SECTION	COUNTY	TOTAL SHEETS	SHEET NO.
FAS 684 (CH 2)	10-00103-02-RS	EDGAR	41	41
ILLINOIS FED. AID PROJECT				

CONTRACT NO. 91471



## GENERAL NOTES

- TYPE III BARRICADES SHALL BE AS SHOWN ON "TYPICAL APPLICATIONS OF TYPE III BARRICADES CLOSING A ROAD". EACH TYPE III BARRICADE SHALL HAVE TWO FLASHING AMBER LIGHTS MOUNTED ABOVE IT.
- WHERE A STOP CONDITION EXISTS, AS SHOWN ABOVE, WARNING SIGNS MAY BE OMITTED IN ADVANCE OF THE "STOP" SIGN.
- STANDARD 701901 SHALL APPLY FOR THE PLACEMENT & MANUFACTURE OF TYPE III BARRICADES.
- ALL SIGNS SHALL BE POST MOUNTED IF THE CLOSURE TIME EXCEEDS FOUR DAYS.
- ONE FLASHING LIGHT IS REQUIRED ABOVE EACH ADVANCE WARNING SIGN DURING HOURS OF DARKNESS.
- LONGITUDINAL DIMENSIONS MAY BE ADJUSTED SLIGHTLY TO FIT FIELD CONDITIONS.
- FORMS BT 725 AND BT 726 ARE REQUIRED.
- THE MAINLINE ROUTE TEMPORARY TRAFFIC CONTROL SHALL BE IN ACCORDANCE WITH THE PLANS, SPECIAL PROVISIONS AND STANDARD SPECIFICATIONS.
- ALL TRAFFIC CONTROL, INCLUDING FLAGGERS, REQUIRED AT SIDE ROADS AND DESIGNATED ENTRANCES REMAINING OPEN TO TRAFFIC, INCLUDING ANY ADDITIONAL DEVICES DEEMED NECESSARY BY THE ENGINEER TO SAFEGUARD TRAFFIC AT SIDE ROADS AND ENTRANCES SHALL BE INCLUDED IN THE CONTRACT UNIT PRICE BID FOR TRAFFIC CONTROL AND PROTECTION (SPECIAL) AND NO ADDITIONAL COMPENSATION WILL BE ALLOWED.
- ALL TRAFFIC CONTROL SHOWN ON THIS DETAIL AND ANY ADDITIONAL DEVICES DEEMED NECESSARY BY THE ENGINEER TO REGULATE SIDEROAD AND ENTRANCE TRAFFIC, INCLUDING FLAGGERS, SHALL BE PAID FOR IN ACCORDANCE WITH ARTICLE 109.04 OF THE STANDARD SPECIFICATIONS.

NOTE:  
ALL SIDEROADS AND ENTRANCES SHALL BE CLOSED IN HALF WIDTHS UNLESS OTHERWISE DIRECTED BY THE ENGINEER.



EDGAR COUNTY  
HIGHWAY DEPARTMENT