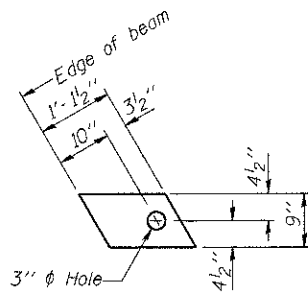


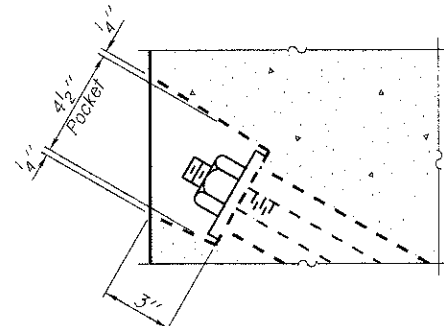
**FABRIC BEARING PAD**  
(Interior)



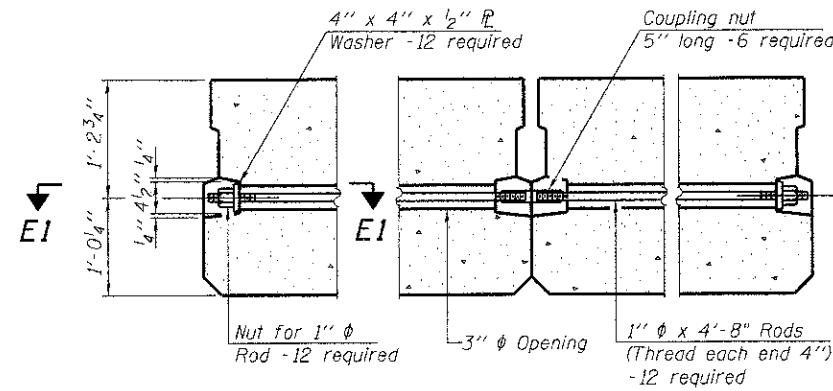
**FABRIC BEARING PAD**  
(Exterior)

Notes:  
All bearing pads shall be 1" thick.

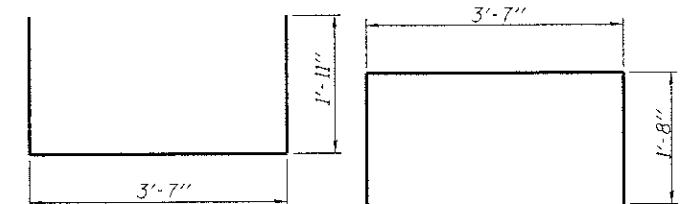
**FIXED**



**SECTION E1-E1**

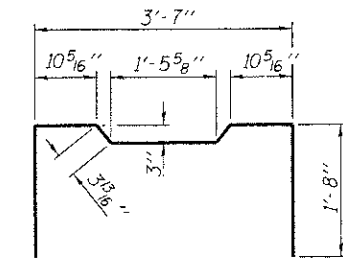


**TYPICAL TRANSVERSE TIE ASSEMBLY**

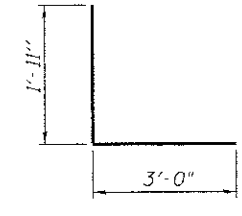


**BAR S1(E)**

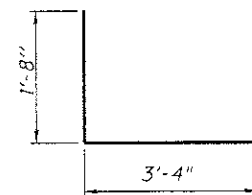
**BAR S1(E)**



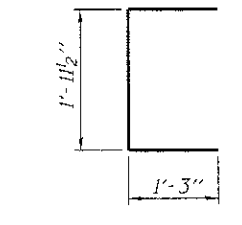
**BAR S2(E)**



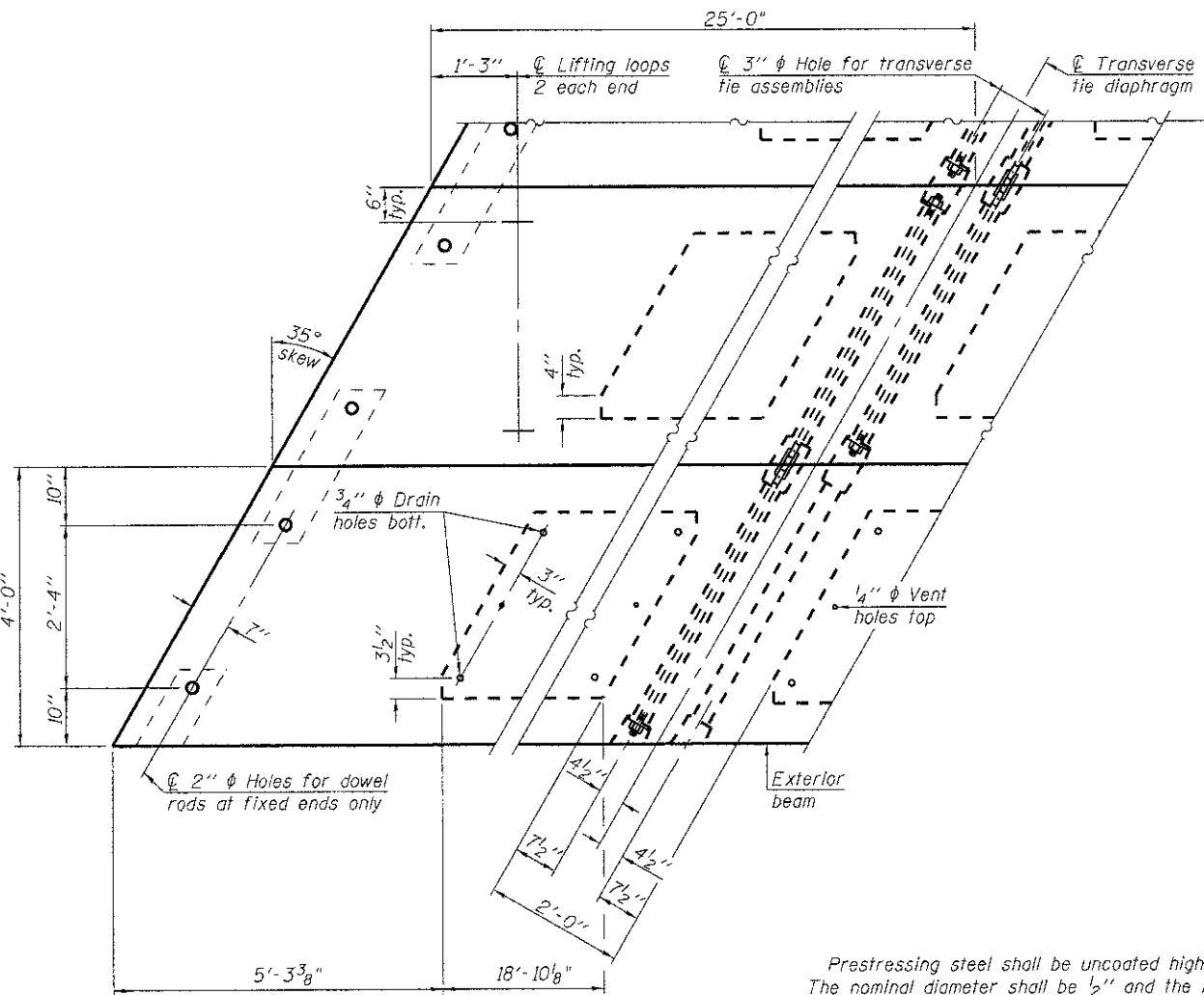
**BAR S3(E)**



**BAR S4(E)**



**BAR U(E)**

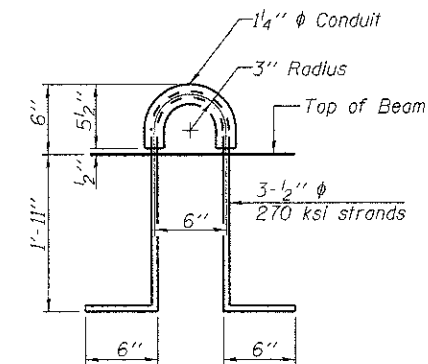


**PLAN VIEW**

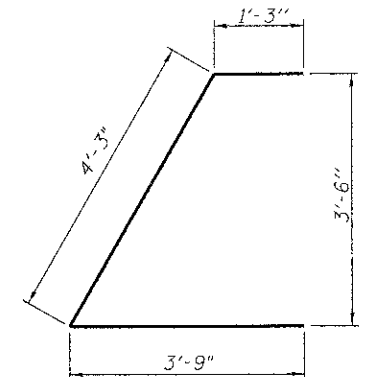
Note: Connect beams in pairs with the transverse tie configuration shown.

**NOTES**

- Prestressing steel shall be uncoated high strength, low relaxation 7-wire strand, Grade 270. The nominal diameter shall be 1/2" and the nominal cross-sectional area shall be 0.153 sq. in.
- The 1" phi rods in the transverse tie assembly shall be tightened to a snug fit and the threads set. Pockets on exterior faces of bridge shall be filled with grout after transverse tie assembly is in place.
- Reinforcement bars shall conform to ASTM A 706, Grade 60.
- Two 1/8" fabric adjusting shims of the dimensions of the exterior bearing pad shall be provided for each bearing pad location.
- A minimum 2 1/2" phi lifting pin shall be used to engage the lifting loops during handling.
- Corrosion Inhibitor, per Article 1020.05(b)(12) and 1021.06 of the Standard Specifications, shall be used in the concrete for precast prestressed concrete deck beams.
- Compressive strength of prestressed concrete, f'c, shall be 6000 psi.
- Compressive strength of prestressed concrete at release, f'ci, shall be 5000 psi.
- Railpost anchor devices (Sht. 9 of 14) to be cast into exterior face of outside beams.



**LIFTING LOOP DETAIL**



**BAR U1(E)**

**BILL OF MATERIAL**

Precast Prestressed Conc. Deck Bms. (27" depth)	Sq. Ft.	1400
---	---------	------

PD-2748-LD

7-1-10

USER NAME =	DESIGNED - KRG	REVISED ---
	CHECKED - MJK	REVISED ---
PLOT SCALE = NONE	DRAWN - GSJ	REVISED ---
PLOT DATE =	CHECKED - MJK	REVISED ---

**MID-AMERICA ENGINEERING SERVICES**  
SPRINGFIELD ILLINOIS

**27"x48" PPC DECK BEAM DETAILS SPAN 2**  
**STRUCTURE NO 084-3414**

SHEET NO. 7 OF 14 SHEETS

F.A.S. RTE.	SECTION	COUNTY	TOTAL SHEETS	SHEET NO.
624	08-00085-00-BR	SANGAMON	32	16
STRUCTURE NO. 084-3414		CONTRACT NO. 2585		
STA. 122+30		ILLINOIS FED. AID PROJECT		