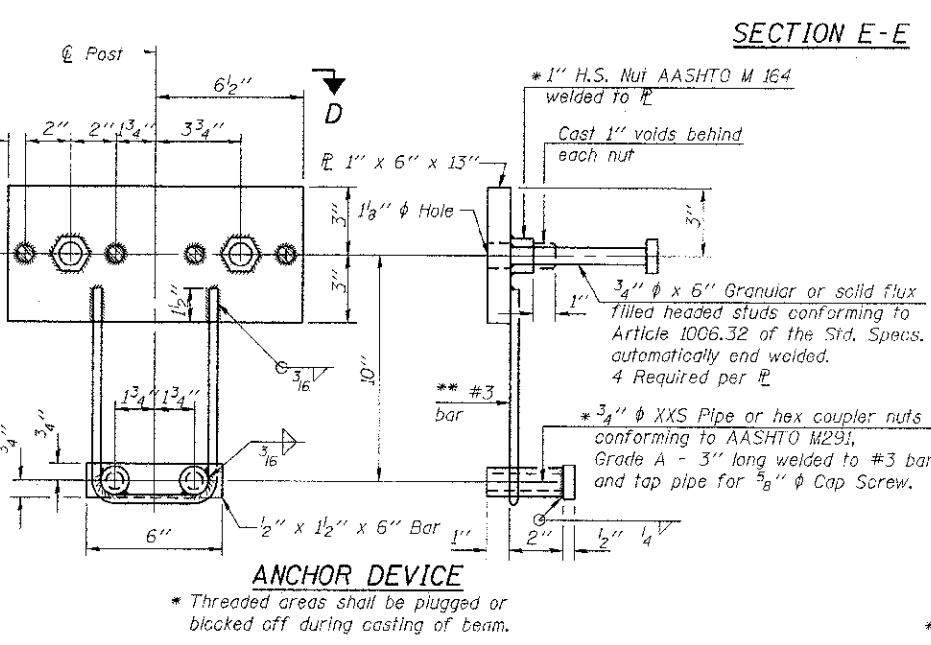
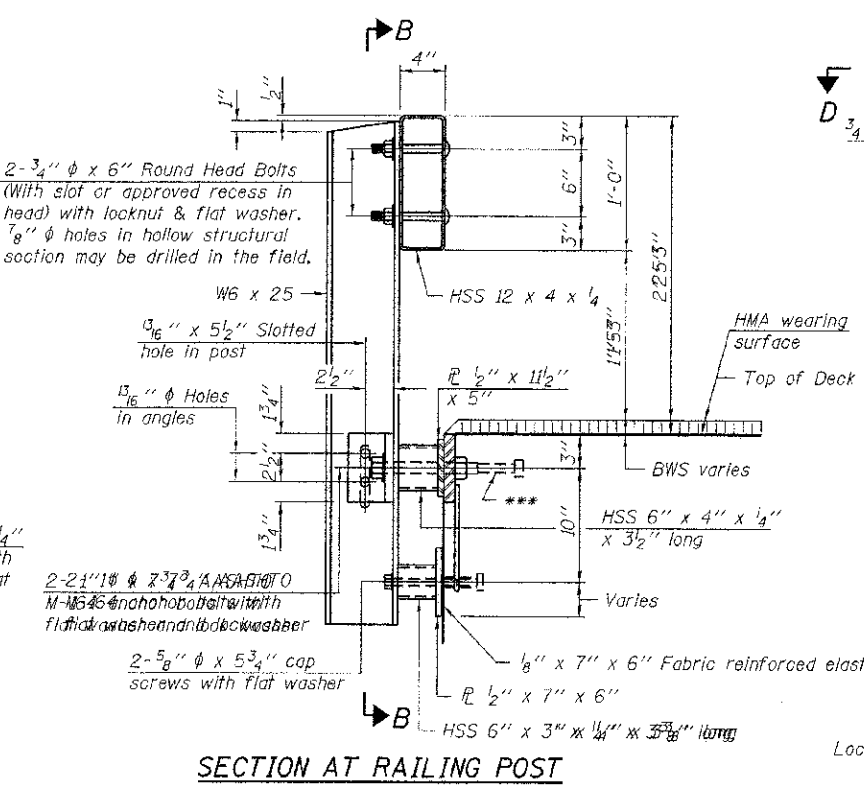
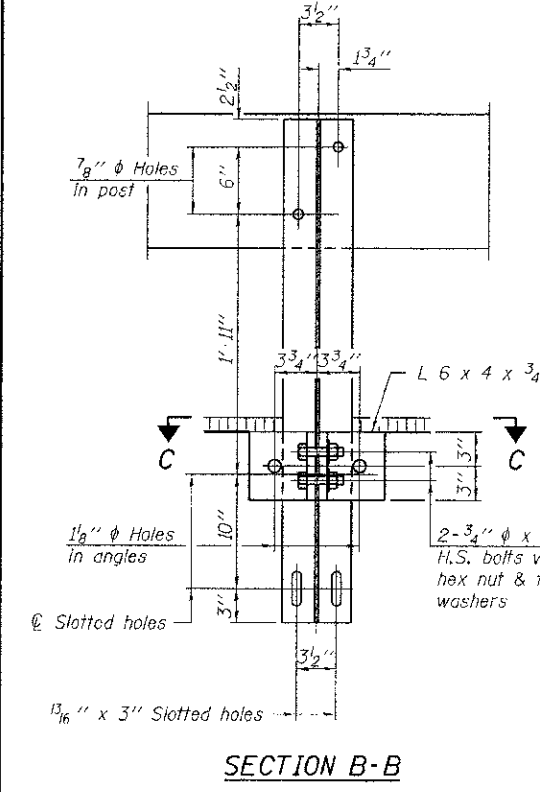
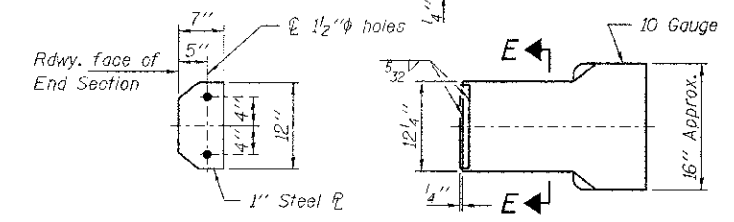
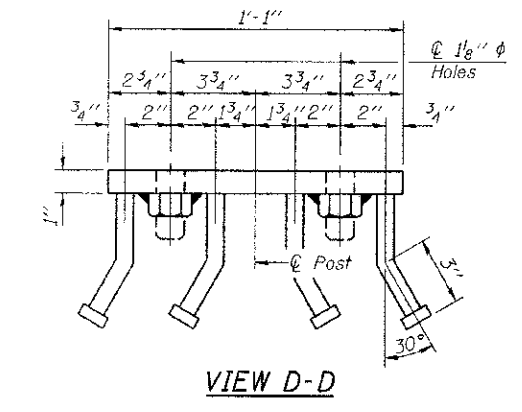
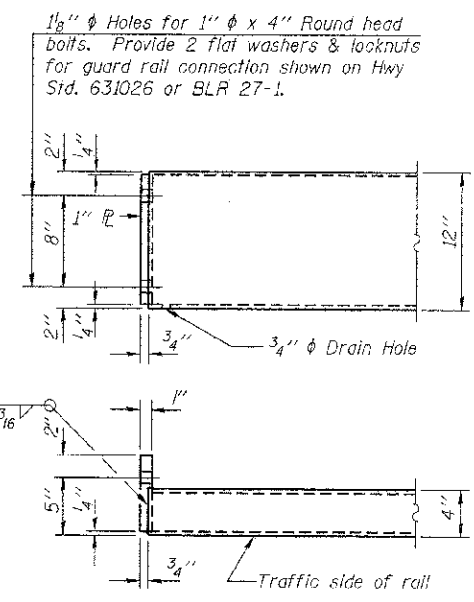
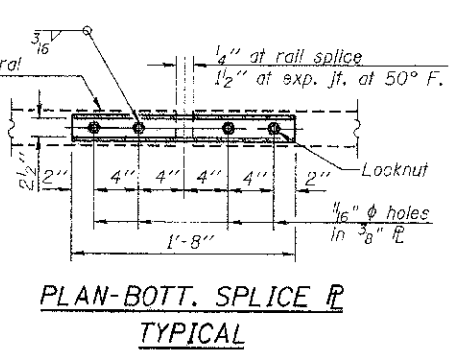
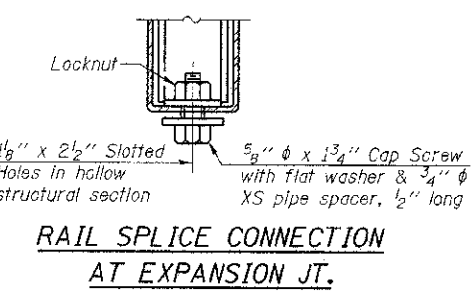
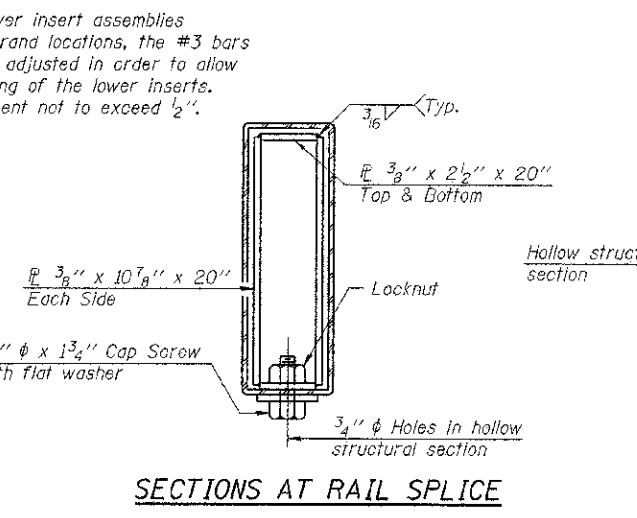
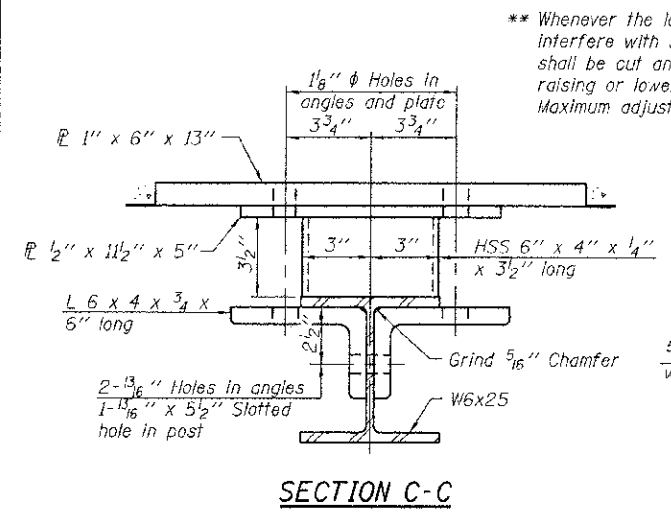


Note: Cost of curled end sections and Terminal Marker - Direct Applied shall be included with the Steel Railing. (4 Required)



Notes:
 All field drilled holes shall be coated with an approved zinc rich paint before erection.
 For multi-span bridges, sufficient 1/4 inch x 6 inch x 1'-2" galvanized steel shims shall be provided to align rail between adjacent spans. Cost included with Steel Railing, Type S-1.
 All steel rail elements shall be galvanized according to Article 509.05 of the Standard Specifications.
 *** The studs of the anchor devices shall be placed below the top reinforcement bars and the outermost longitudinal reinforcement bar shall be placed directly above the studs of the rail post anchor device.



BILL OF MATERIAL

Item	Unit	Quantity
Steel Railing, Type S-1	Foot	148

R-23A 7-1-10 (10'-9" Maximum Post Spacing)

FILE NAME = 008240*ah-tr-bridged.dgn	USER NAME =	DESIGNED = A.S.L.	REVISED =
HAMPTON, LENZINI AND RENICK, INC.	3048 SPRINGFIELD BLVD., SUITE 301 SPRINGFIELD, ILLINOIS 62703	CHECKED = S.W.M.	REVISED =
ILLINOIS PROFESSIONAL DESIGN FIRM 181 P.E. 158 0000 - 114/0000	PLOT SCALE =	DRAWN = D.A.B.	REVISED =
	PLOT DATE = 10/29/2012	CHECKED = S.W.M.	REVISED =

STATE OF ILLINOIS
 WAYNE COUNTY HIGHWAY DEPARTMENT

STEEL RAILING, TYPE S-1
 STRUCTURE NO. 096-3448

T.R.	SECTION	COUNTY	TOTAL SHEETS	SHEET NO.
167A	08-18110-00-BR	WAYNE	12	8
ORCHARD ROAD DISTRICT		CONTRACT NO. 95588		
ILLINOIS FED. AID PROJECT				

SHEET NO. 5 OF 9 SHEETS