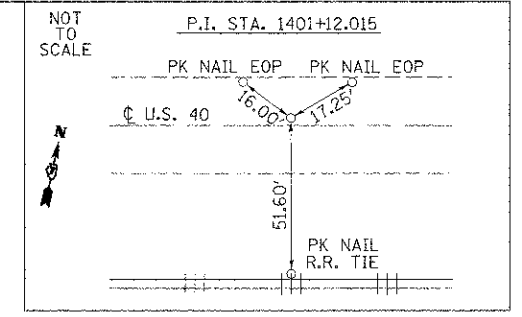
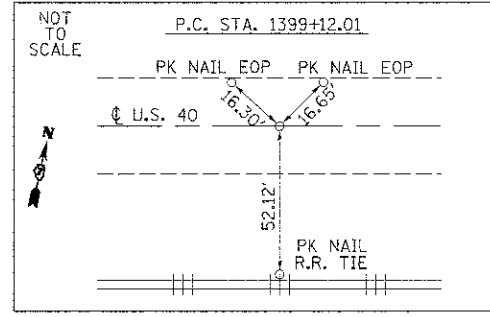


PLAN	DATE
BY	
REVISIONS	
NO.	
DATE	
BY	
REVISIONS	
NO.	
DATE	
BY	
REVISIONS	
NO.	
DATE	

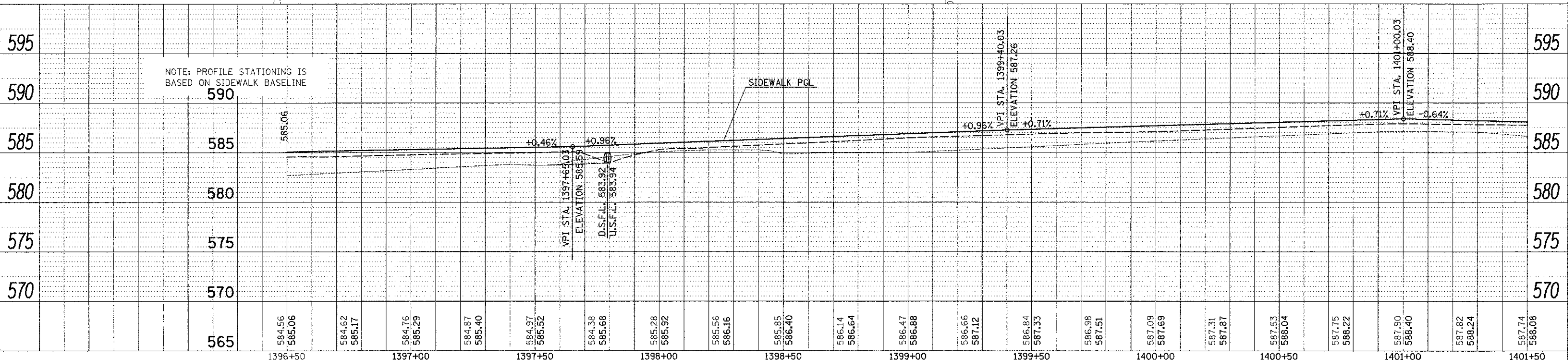
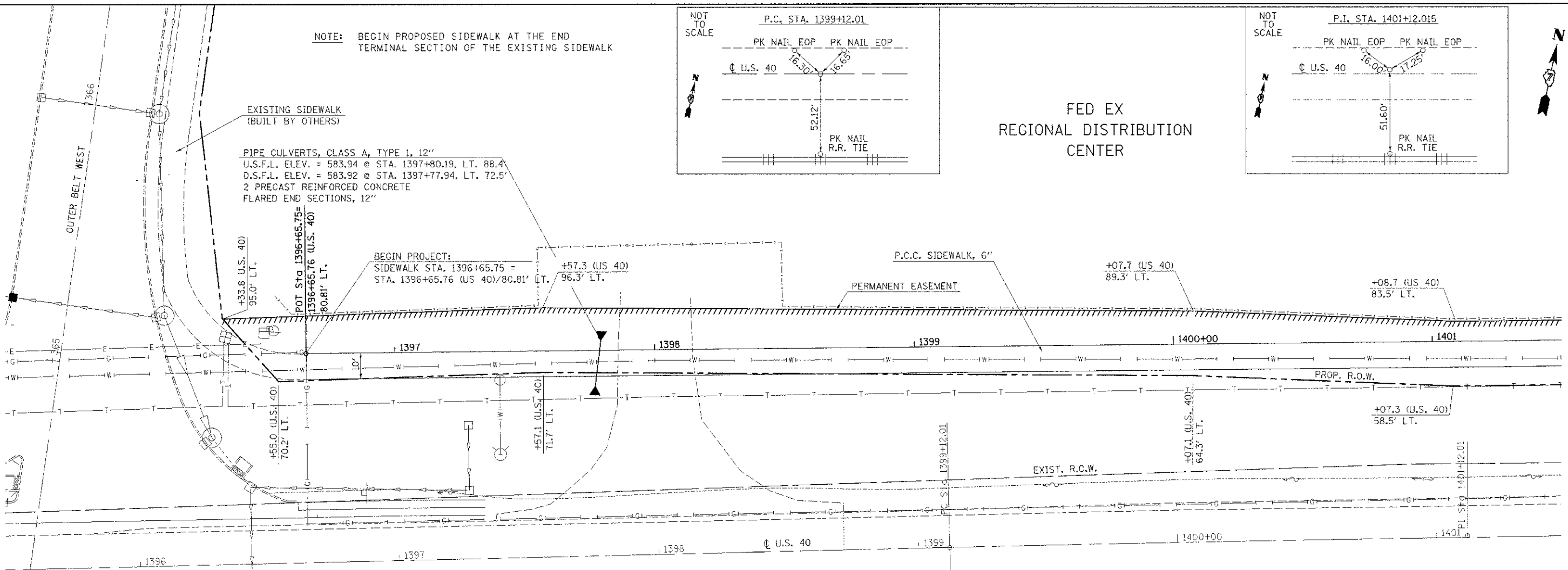
PROFILE	DATE
BY	
REVISIONS	
NO.	
DATE	
BY	
REVISIONS	
NO.	
DATE	
BY	
REVISIONS	
NO.	
DATE	

NOTE: BEGIN PROPOSED SIDEWALK AT THE END TERMINAL SECTION OF THE EXISTING SIDEWALK

PIPE CULVERTS, CLASS A, TYPE 1, 12"
 U.S.F.L. ELEV. = 583.94 @ STA. 1397+80.19, LT. 88.4'
 D.S.F.L. ELEV. = 583.92 @ STA. 1397+77.94, LT. 72.5'
 2 PRECAST REINFORCED CONCRETE
 FLARED END SECTIONS, 12"



FED EX
 REGIONAL DISTRIBUTION
 CENTER



FILE NAME =	USER NAME = swartzrw	DESIGNED -	REVISED -	STATE OF ILLINOIS DEPARTMENT OF TRANSPORTATION	SIDEWALK PLAN	F.A.S. R.T.E.	SECTION	COUNTY	TOTAL SHEETS	SHEET NO.
of:\pwwork\pudot\swartzrw\c0269358\107956833-shtr\p\proj.dgn	DRAWN -	REVISED -	2796			11-00126-00-BT	EFFINGHAM	34	6	
PLOT SCALE = 20.0000 1/16"	CHECKED -	REVISED -	CONTRACT NO. 95663			ILLINOIS FED. AID PROJECT				
PLOT DATE = 11/19/2012	DATE -	REVISED -	SCALE: 20			SHEET NO. 1 OF 6 SHEETS	STA. 1396+50 TO STA. 1401+50			