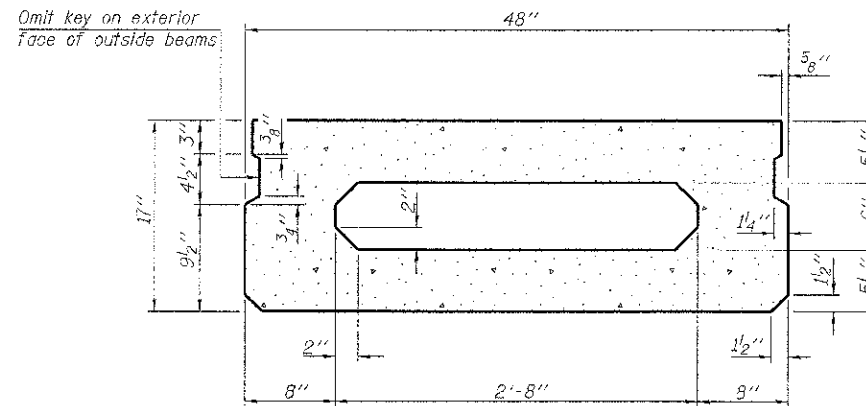
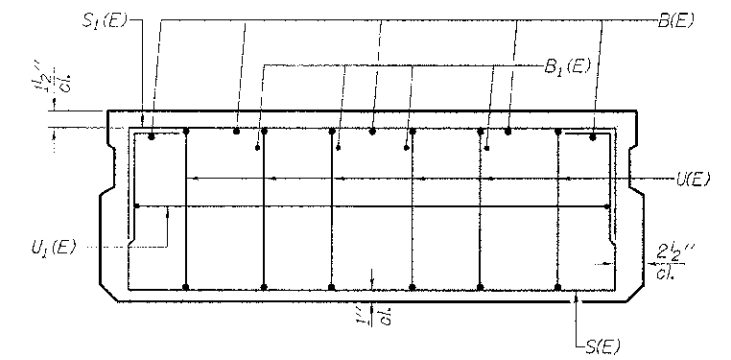


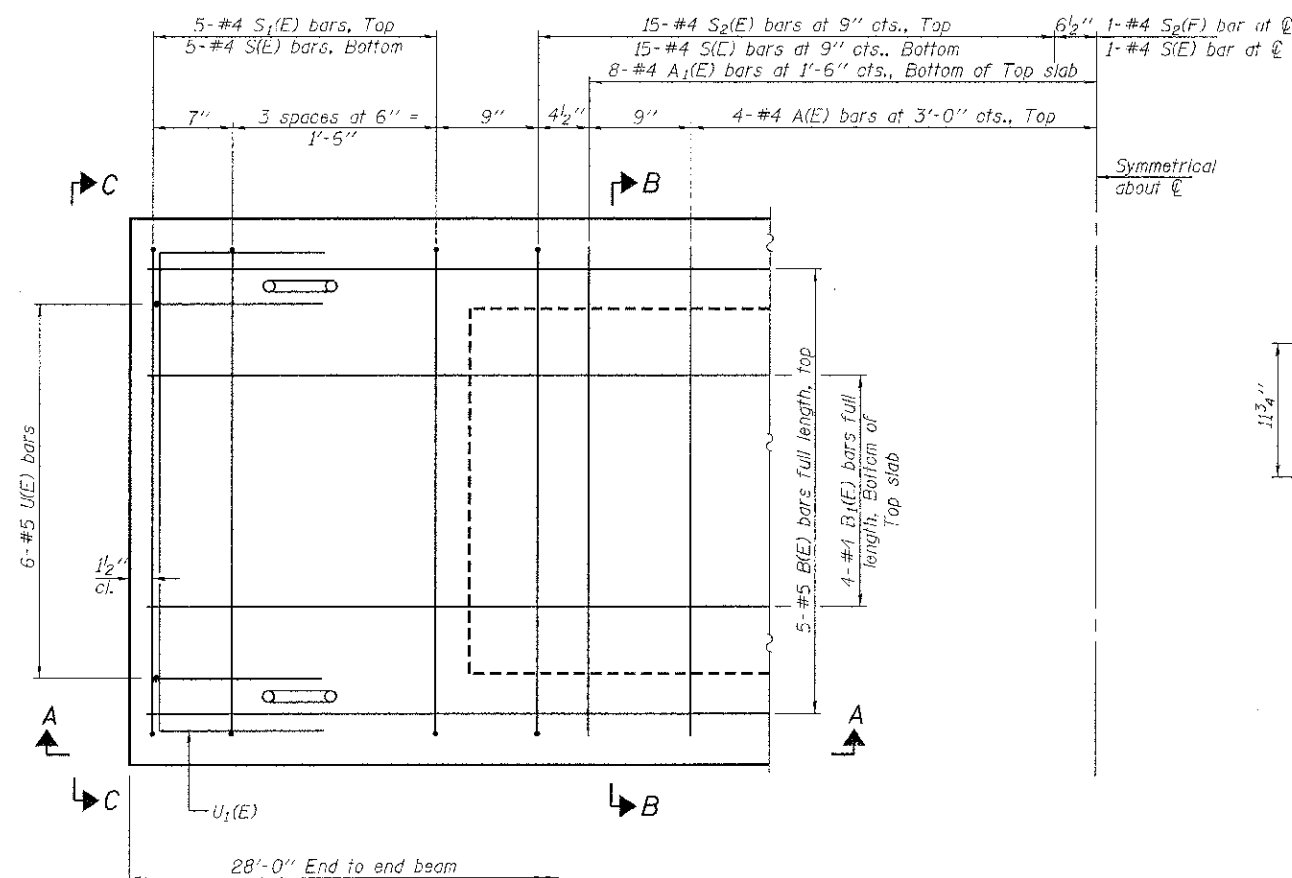
SECTION A-A



SECTION B-B
(Showing dimensions)

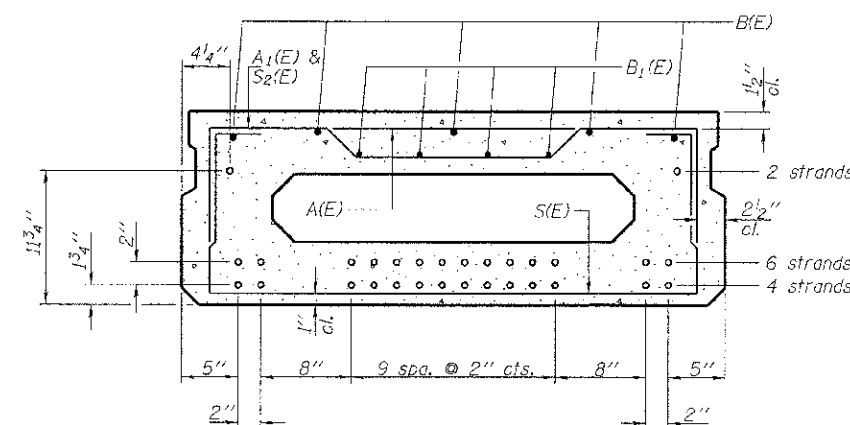


VIEW C-C



PLAN VIEW

Symmetrical about C



SECTION B-B

(Showing reinforcement and permissible strand locations)

Note: Place the number of strands specified in each row symmetrically about the centerline of beam in the permissible strand locations shown.

BAR LIST
ONE BEAM ONLY
(For information only)

Bar	No.	Size	Length	Shape
A1(E)	8	#4	3'-7"	—
A1(E)	16	#4	3'-10"	—
B1(E)	5	#5	27'-8"	—
B1(E)	4	#4	27'-8"	—
S1(E)	41	#4	6'-9"	□
S1(E)	10	#4	5'-3"	□
S2(E)	31	#4	5'-6"	□
U1(E)	12	#5	3'-8"	□
U1(E)	2	#4	6'-0"	□

Note: See sheet 3 & 4 of 10 for additional details and Bill of Material.

MINIMUM BAR LAP

#4 bar = 2'-0"
#5 bar = 2'-6"

Notes:
Spacing of S1(E) and S2(E) bars may be adjusted up to 4" in the immediate area of the transverse tie diaphragms to miss the block outs for the transverse ties.

PD-1748-0

7-1-10

FILE NAME = 292171-shr-bridge.dgn	USER NAME =	DESIGNED - A.S.L.	REVISED -
HAMPTON, LENZINI AND RENWICK, INC.		CHECKED - S.W.M.	REVISED -
3045 STEVENSON DRIVE, SUITE 301		DRAWN - C.A.B.	REVISED -
SPRINGFIELD, ILLINOIS 62705	PLOT SCALE =	CHECKED - S.W.M.	REVISED -
ILLINOIS PROFESSIONAL ENGINEERING FIRM	PLOT DATE = 10/30/2012		
1317 PG. / SE CORP. 134.000050			

STATE OF ILLINOIS
MOULTRIE COUNTY HIGHWAY DEPARTMENT

17" x 48" PPC DECK BEAM
STRUCTURE NO. 070-4443

SHEET NO. 2 OF 10 SHEETS

T.R.	SECTION	COUNTY	TOTAL SHEETS	SHEET NO.
19	09-04131-00-BR	MOULTRIE	25	17
LOVINGTON ROAD DISTRICT			CONTRACT NO. 95697	
ILLINOIS FED. AID PROJECT				