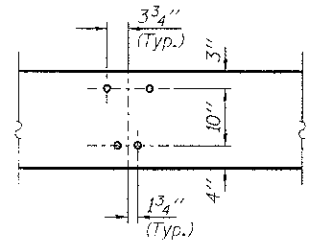
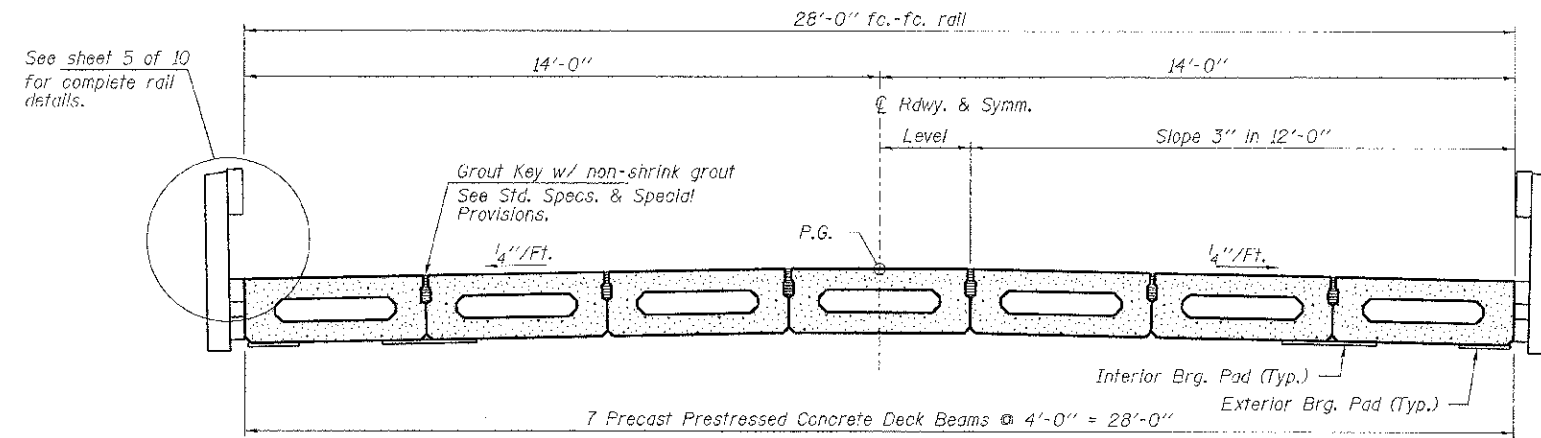


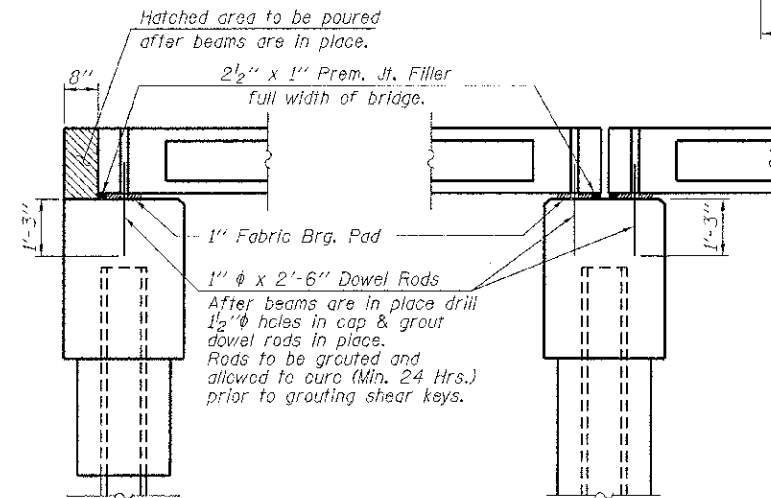
ELEVATION
Showing Rail Post Spaces
See sheet 5 of 10 for Railing Details.



DETAIL A



CROSS SECTION
See sheets 2 & 3 of 10 for Superstructure.



SECTION AT ABUTMENTS
© Rf. L's

SECTION AT PIERS
© Rf. L's

FILE NAME = 090171-sh1-br.dgn	USER NAME =	DESIGNED - A.S.L.	REVISED -	STATE OF ILLINOIS MOULTRIE COUNTY HIGHWAY DEPARTMENT	SUPERSTRUCTURE DETAILS STRUCTURE NO. 070-4443	T.R.	SECTION	COUNTY	TOTAL SHEETS	SHEET NO.
HAMPTON, LENZINI AND RENWICK, INC. 3003 STEVENSON DRIVE, SUITE 201 SPRINGFIELD, ILLINOIS 62765	PLOT SCALE =	CHECKED - S.W.M.	REVISED -			19	C9-04131-00-BR	MOULTRIE	25	19
ILLINOIS PROFESSIONAL DESIGN FIRMS 157 E. SECOND ST. CHICAGO, ILL. 60601	PLOT DATE = 12/30/2012	DRAWN - D.A.B.	REVISED -			LOVINGTON ROAD DISTRICT	CONTRACT NO. 95697			
						SHEET NO. 4 OF 10 SHEETS		ILLINOIS FED. AID PROJECT		