



CORPORATE OFFICE
4940 OLD COLLINSVILLE RD.
SWANSEA, ILLINOIS 62226
TEL (618) 624-4488
FAX (618) 624-6688
corp@twm-inc.com

WATERLOO OFFICE
113 SOUTH MAIN STREET
WATERLOO, ILLINOIS 62298
TEL (618) 939-5050
FAX (618) 939-3938
waterloo@twm-inc.com

ST. LOUIS OFFICE
1001 CRAIG ROAD, SUITE 260
ST. LOUIS, MISSOURI 63146
TEL (314) 236-5052
FAX (314) 872-2194
stlouis@twm-inc.com

PROFESSIONAL REGISTRATIONS	LICENSE NO.
ILLINOIS PROFESSIONAL DESIGN FIRM	184-001299
PROFESSIONAL ENGINEERING CORP.	02-035370
PROFESSIONAL STRUCTURAL ENGR. CORP.	81-002022
ILLINOIS PROF. LAND SURVEYING CORP.	045-000029
MISSOURI PROFESSIONAL ENGR. CORP.	NC 001508
MISSOURI LAND SURVEYING CORP.	NC 000346

SEAL

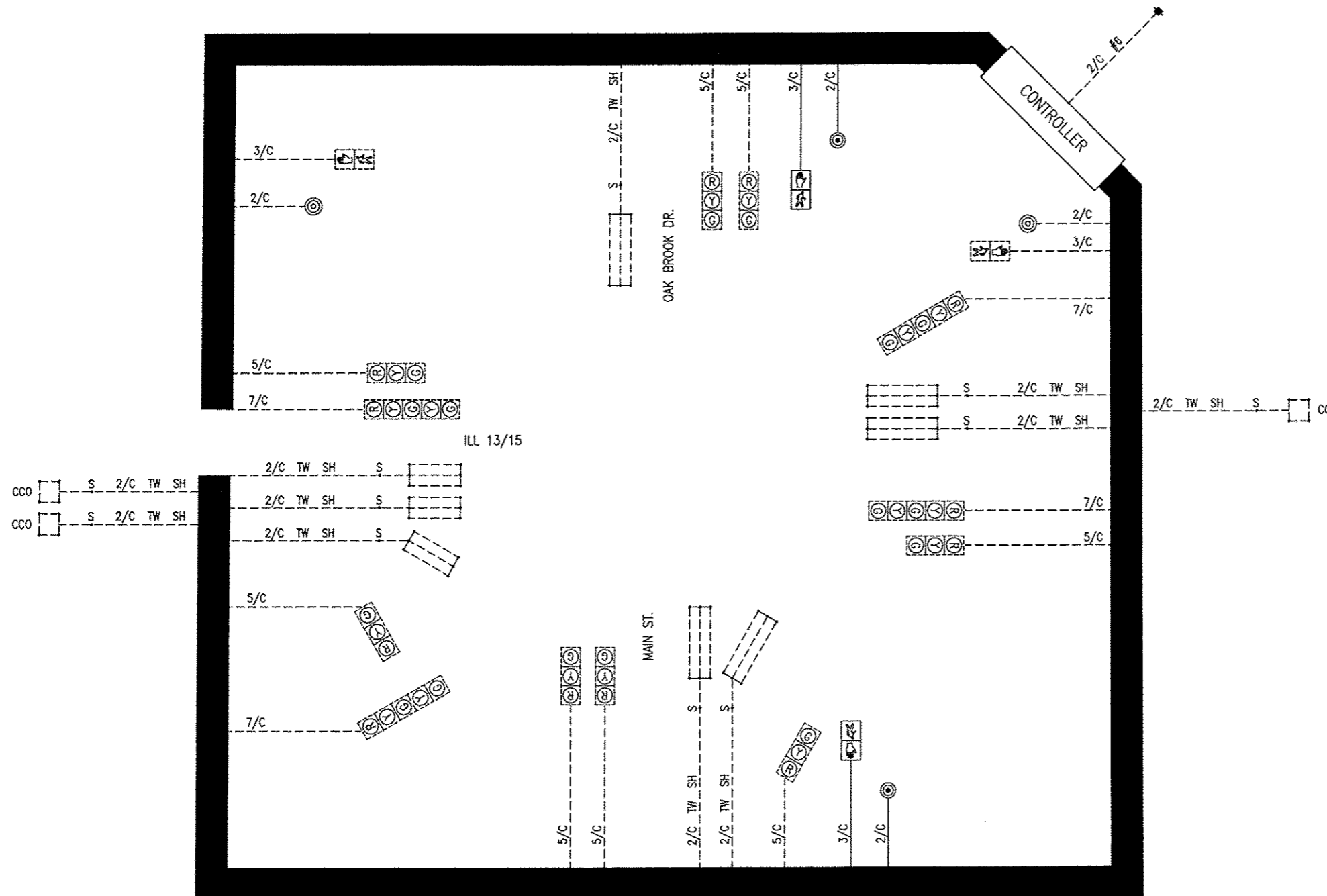
This Professional Service conforms to the current Illinois Minimum Standards for a Boundary Survey

Signature: _____
Expiration Date: _____

STATEMENT OF RESPONSIBILITY
I hereby confirm that the document herein to be authorized by my seal is restricted to this sheet, and I hereby disclaim any responsibility for all other drawings, specifications, estimates, reports or other documents or instruments relating to or intended to be utilized for any other part of the architectural, engineering or survey project.

CABLE DIAGRAM LEGEND

- EXISTING ELECTRICAL CABLE IN CONDUIT
- ⊙ EXISTING PEDESTRIAN PUSHBUTTON
- ⊙ EXISTING PEDESTRIAN SIGNAL HEAD
- ⊙ EXISTING SIGNAL
- PROPOSED ELECTRICAL CABLE IN CONDUIT
- ⊙ PROPOSED PEDESTRIAN PUSHBUTTON
- ⊙ PROPOSED PEDESTRIAN SIGNAL HEAD
- S CABLE SPLICE (SEE GENERAL NOTES)
- 2/C INDICATES NUMBER OF CONDUCTORS IN CABLE
- COO CALL CARRY OVER (SEE GENERAL NOTES)
- DD CALL DELAY (SEE GENERAL NOTES)
- SERVICE INSTALLATION
- #6 INDICATES AMERICAN WIRE GAUGE (AWG) SIZE & CONDUCTORS



P:\PROJECTS\10-00023-00-SW\TRAFFIC SIGNALS.dwg 1/11/2012 1:05:25 PM CST

TITLE: SECTION 10-00023-00-SW
TRAFFIC SIGNALS MODIFICATIONS

PROJECT: SAFE ROUTES TO SCHOOL
SIDEWALK IMPROVEMENTS
VILLAGE OF FREEBURG
ST. CLAIR COUNTY, ILLINOIS

REV.	DATE	DESCRIPTION
△		
△		
△		

DRAWN BY: RPM	SHEET
DESIGNED BY: BLR	13
CHECKED BY:	
APPROVED BY:	
PROJECT NUMBER: D01100115	OF 17 SHEETS
<input checked="" type="checkbox"/> ISSUED FOR REVIEW	<input type="checkbox"/> ISSUED FOR BIDDING
<input type="checkbox"/> ISSUED FOR CONSTR.	<input type="checkbox"/> RECORD DRAWING