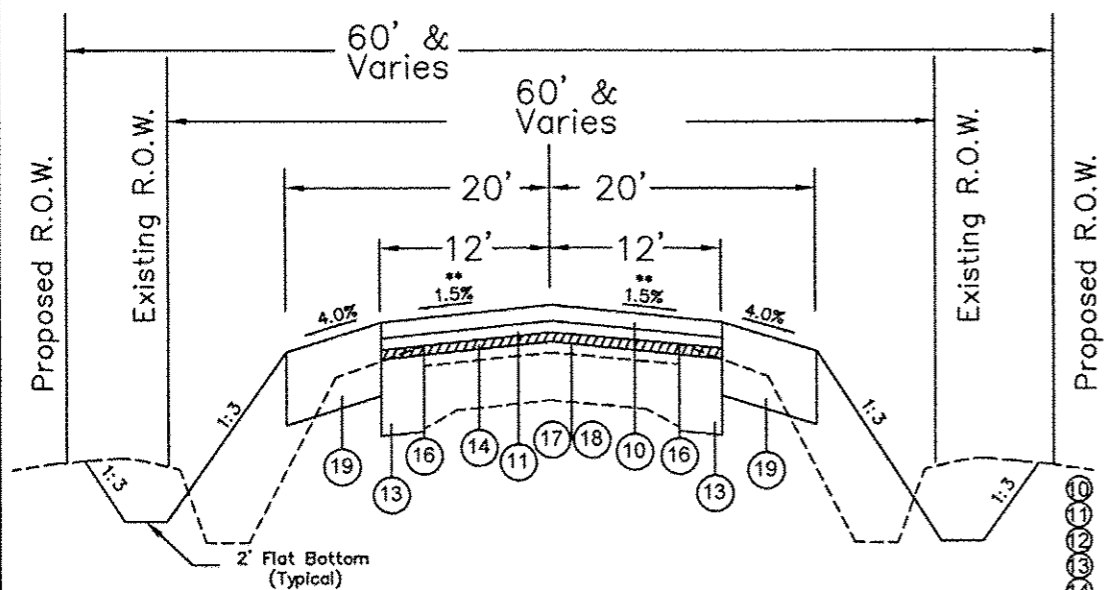
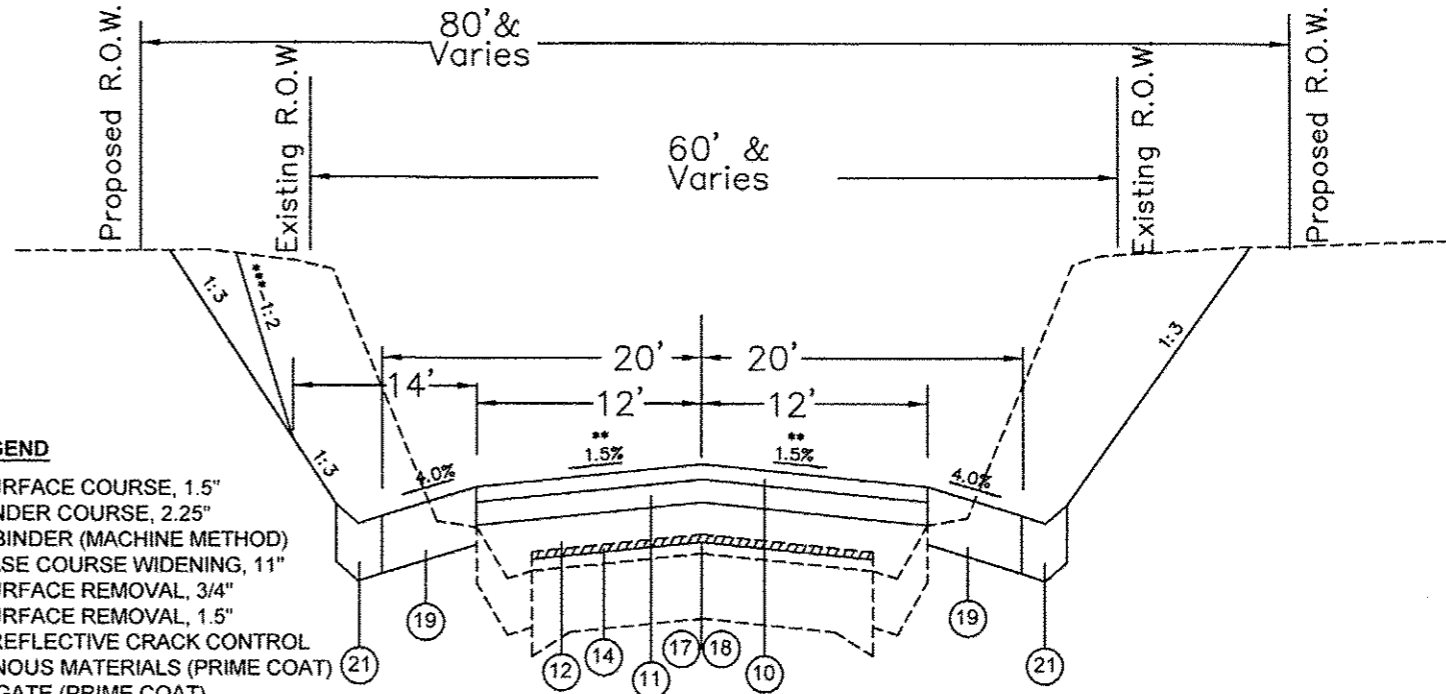


PROPOSED TYPICAL SECTIONS

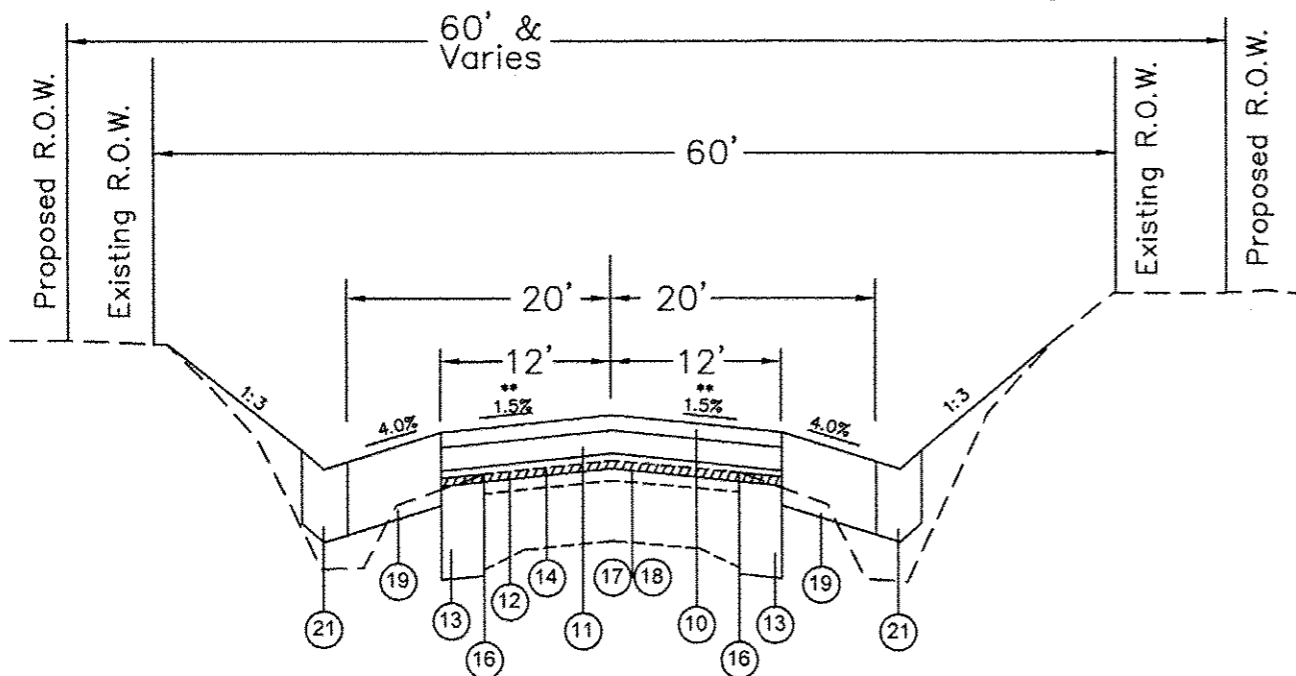


STA. 4+02 TO STA. 13+75
 STA. 52+34 TO STA. 54+93
 STA. 66+00 TO STA. 67+14
 STA. 78+63 TO STA. 111+25
 STA. 122+25 TO STA. 131+85
****SUPERELEVATED "e" = 3% TRANSITION**
SUPERELEVATION STA 130+19 TO STA 130+99

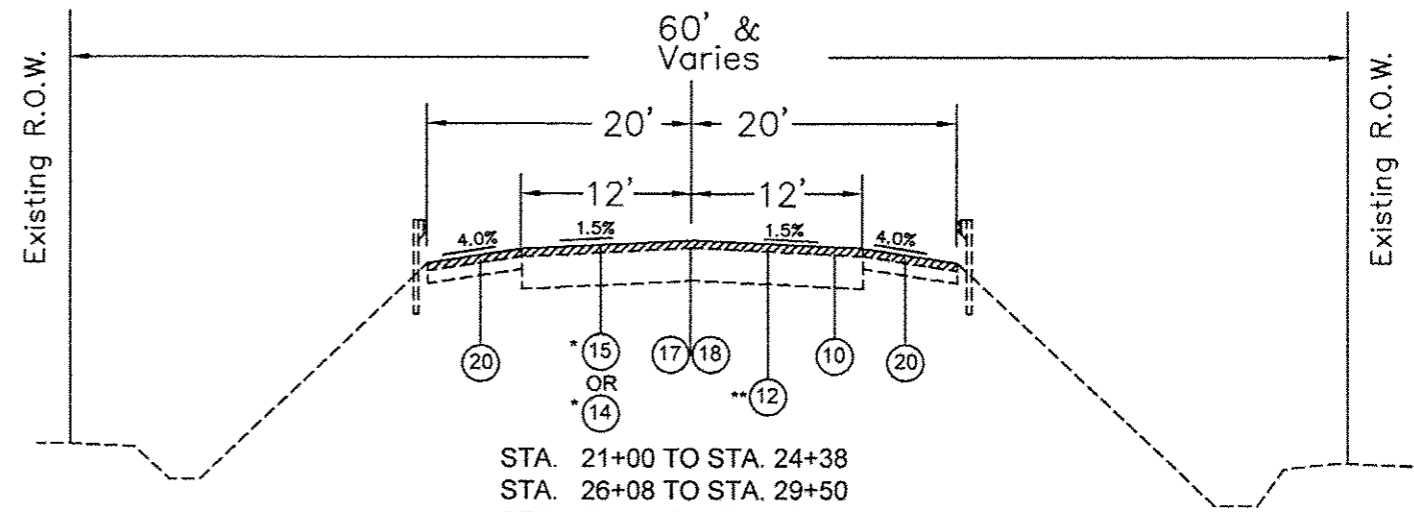
- LEGEND**
- ⑩ PROPOSED HMA SURFACE COURSE, 1.5"
 - ⑪ PROPOSED HMA BINDER COURSE, 2.25"
 - ⑫ PROPOSED LEVEL BINDER (MACHINE METHOD)
 - ⑬ PROPOSED HMA BASE COURSE WIDENING, 11"
 - ⑭ PROPOSED HMA SURFACE REMOVAL, 3/4"
 - ⑮ PROPOSED HMA SURFACE REMOVAL, 1.5"
 - ⑯ PROPOSED STRIP REFLECTIVE CRACK CONTROL
 - ⑰ PROPOSED BITUMINOUS MATERIALS (PRIME COAT)
 - ⑱ PROPOSED AGGREGATE (PRIME COAT)
 - ⑲ PROPOSED HMA SHOULDERS, 8"
 - ⑳ PROPOSED HMA SHOULDERS
 - ㉑ PROPOSED CONCRETE GUTTER, TYPE B
 - ㉒ PROPOSED COMBINATION CONCRETE CURB AND GUTTER, TYPE B-6.24
 - ㉓ PROPOSED CONCRETE SIDEWALK, 4"



STA. 16+00 TO STA. 21+00
 *** LT. STA. 16+00 TO STA. 20+25
 STA. 31+98 TO STA. 38+74
 *** LT. STA. 33+00 TO STA. 37+50
**** SUPERELEVATED EXIST. "e" = 4% PROP. "e" = 5%**
TRANSITION SUPERELEVATION STA. 36+61 to STA. 38+04
 STA. 59+00 TO STA. 60+69



STA. 13+75 TO STA. 16+00
 STA. 37+50 TO STA. 38+74
**** SUPERELEVATED EXIST. "e" = 4% PROP. "e" = 5%**
TRANSITION SUPERELEVATION STA. 36+61 to STA. 38+04



STA. 21+00 TO STA. 24+38
 STA. 26+08 TO STA. 29+50
 STA. 54+93 TO STA. 56+08
 * See HMA SURF. REM. DETAIL FOR LOCATIONS
 ** STA. 21+00 TO STA. 22+00 & STA. 28+50 TO STA. 29+50

**STATE OF ILLINOIS
DEPARTMENT OF TRANSPORTATION**

TYPICAL SECTIONS

SCALE: SHEET NO. 2 OF 6 SHEETS

ROUTE NO.	SECTION	COUNTY	TOTAL SHEETS	SHEET NO.
735	03-00053-01-WR	MADISON	145	6
			CONTRACT NO.	97509