

ROUTE NO.	SECTION	COUNTY	TOTAL SHEETS	SHEET NO.
T.R. 85	10-01218-00-BR	JOHNSON	19	1
FED. ROAD DIST. NO.		ILLINOIS CONTRACT NO. 99476		

STATE OF ILLINOIS
DEPARTMENT OF TRANSPORTATION
DIVISION OF HIGHWAYS

PLANS FOR PROPOSED HIGHWAY BRIDGE PROGRAM

PROJECT BROS-0087(130)
SECTION 10-01218-00-BR
COUNTY UNIT ROAD DISTRICT
JOHNSON COUNTY
T.R. 85 / DOUBLE BRIDGES LANE
PROPOSED STRUCTURE NO. 044-3134
C-99-520-11

INDEX OF SHEETS

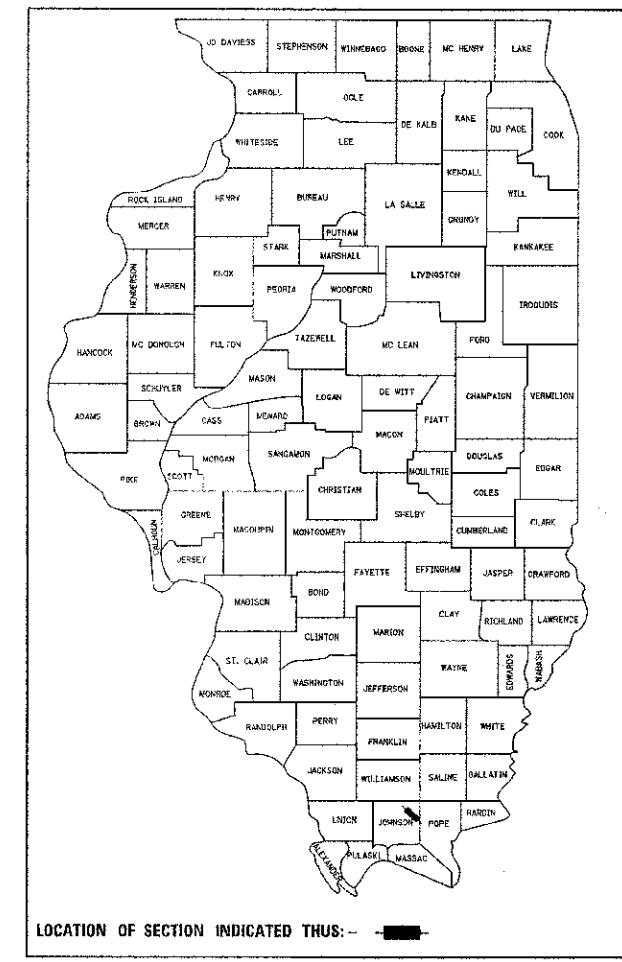
SHEET NO.	DESCRIPTION
1.	COVER SHEET
2.	SUMMARY OF QUANTITIES AND GENERAL NOTES
3.	TYPICAL SECTIONS
4-5.	PLAN AND PROFILE
6-10.	STATION CROSS SECTIONS
11-18.	BRIDGE PLANS
19.	BORINGS

SEE PROPOSAL BOOKLET FOR HIGHWAY STANDARDS:

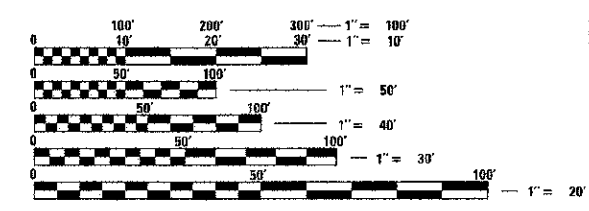
000001-06	STANDARD SYMBOLS, ABBREVIATIONS, AND PATTERNS
515001-03	NAME PLATE FOR BRIDGES
635006-03	REFLECTOR AND TERMINAL MARKER PLACEMENT
701901-02	TRAFFIC CONTROL DEVICES
BLR 21-9	TYPICAL APPLICATION OF TRAFFIC CONTROL DEVICES FOR CONSTRUCTION ON RURAL LOCAL HIGHWAYS

UTILITIES

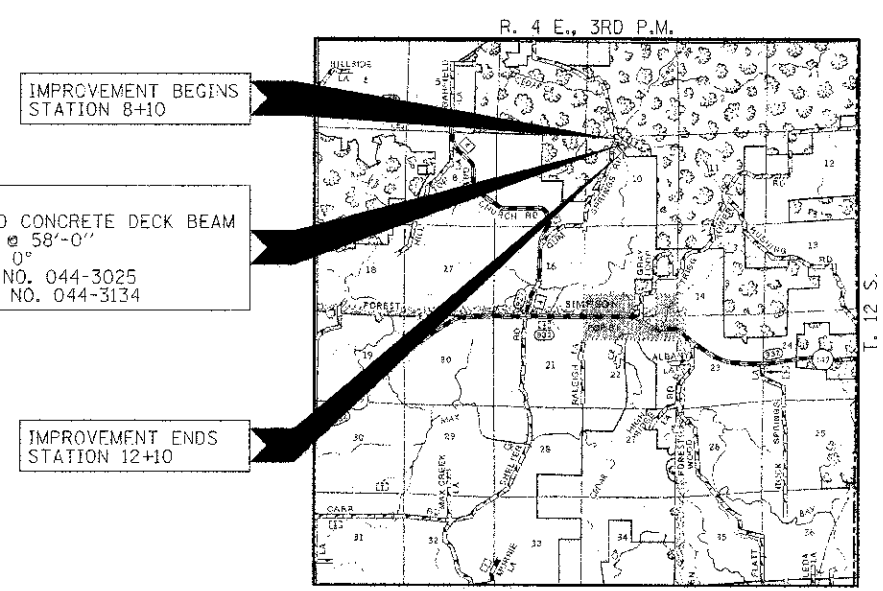
NONE



FUNCTIONAL CLASSIFICATION: LOCAL ROAD (NON-URBAN)
DESIGN SPEED: 20 MPH
DESIGN TRAFFIC: 5 ADT



FULL SIZE PLANS HAVE BEEN PREPARED USING STANDARD ENGINEERING SCALES. REDUCED SIZED PLANS WILL NOT CONFORM TO STANDARD SCALES. IN MAKING MEASUREMENTS ON REDUCED PLANS, THE ABOVE SCALES MAY BE USED.



STA. 10+00
PRECAST PRESTRESSED CONCRETE DECK BEAM BRIDGE, SINGLE SPAN @ 58'-0"
21'-0" RWY.; SKEW = 0°
EXISTING STRUCTURE NO. 044-3025
PROPOSED STRUCTURE NO. 044-3134

LOCATION MAP

APPROXIMATE SCALE: 0 1 MILE
NET LENGTH OF SECTION = 400 FEET = 0.076 MILES

WARNING

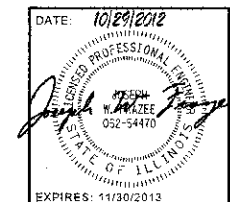
CALL 811 BEFORE YOU DIG
DIG NO: X2510613

JOHNSON COUNTY HIGHWAY DEPARTMENT

APPROVED: 11-8 2012
Steve Kelly
COUNTY ENGINEER

PASSED: NOV. 2, 2012
Dennis W. Hill
DISTRICT NINE ENGINEER OF LOCAL ROADS & STREETS

Relieving For Bid Based on Limited Review: 11-5 2012
Orren Osman
DEPUTY DIRECTOR OF HIGHWAYS
REGION FIVE ENGINEER
STATE OF ILLINOIS
DEPARTMENT OF TRANSPORTATION



HAMPTON, LENZINI AND RENWICK, INC.
CIVIL ENGINEERS - STRUCTURAL ENGINEERS - LAND SURVEYORS
3085 STEVENSON DRIVE, SUITE 201
SPRINGFIELD, ILLINOIS 62703
217.546.3400 www.hlrengineering.com

CONTRACT NO. 99476