

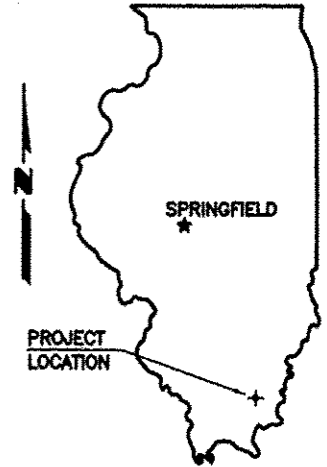
1-18-13 LETTING ITEM 102

CENTRAL BUREAU OF
 2012 NOV 13 P 1:35
 LOCAL ROADS & STREETS

STATE OF ILLINOIS
 DEPARTMENT OF TRANSPORTATION
 PLANS FOR PROPOSED
HIGHWAY BRIDGE PROGRAM

TOWNSHIP ROUTE 272A (LINDALE ROAD)
 EAST ELDORADO TOWNSHIP
 SECTION 10-04119-00-BR
 PROJECT NO. BROS-165(35)
 JOB NO. C-99-521-11
 SPOIL BANK DITCH

ROUTE	SECTION	COUNTY	TOTAL SHEETS	SHEET NO.
TR 272A	10-04119-00-BR	SALINE	12	1
PROJECT NO. BROS-165(35)		CONTRACT NO. 99479		



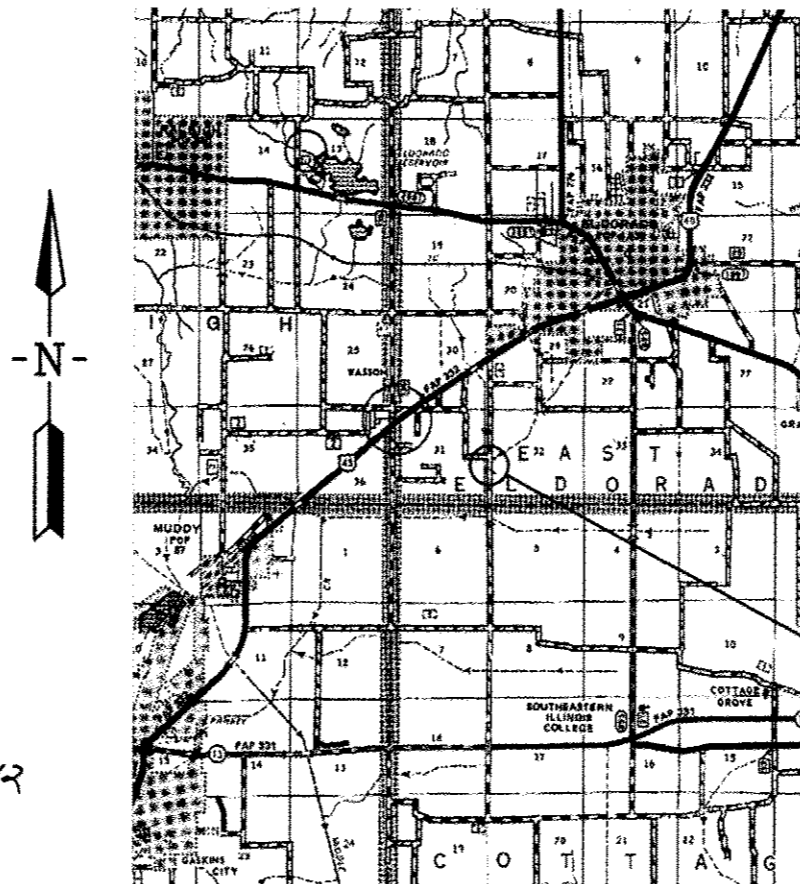
INDEX OF SHEETS

1. COVER SHEET
 2. PLAN AND PROFILE
 3. GENERAL PLAN AND ELEVATION
 4. 33" X 36" PPC DECK BEAM
 5. 33" X 36" PPC DECK BEAM DETAILS
 6. 33" X 48" PPC DECK BEAM
 7. 33" X 36" PPC DECK BEAM DETAILS
 8. ABUTMENT
 9. STEEL RAILING, TYPE S1
 10. NAME PLATES
 11. PILING DETAILS
 12. CROSS SECTIONS
- STANDARDS 00001-06 STANDARD SYMBOLS, ABBREVIATIONS AND PATTERNS
 280001-07 TEMPORARY EROSION CONTROL SYSTEMS
 635006-03 REFLECTOR AND TERMINAL MARKER PLACEMENT
 701901-02 TRAFFIC CONTROL DEVICES
 BLR 21-9 TYPICAL APPLICATION OF TRAFFIC CONTROL DEVICES

<u>SUMMARY OF QUANTITIES</u>			
<u>CODE NO.</u>	<u>PAY ITEM</u>	<u>UNIT</u>	<u>TOTAL</u>
* X2501000	SEEDING, CLASS 2 (SPECIAL)	ACRE	0.3
20200100	EARTH EXCAVATION	CU YD	15
* 20300100	CHANNEL EXCAVATION	CU YD	271
* 28100807	STONE DUMPED RIPRAP, CLASS A4	TON	197
* 40200800	AGGREGATE SURFACE COURSE, TYPE B	TON	608
* 50100100	REMOVAL OF EXISTING STRUCTURES	EACH	1
50200100	STRUCTURE EXCAVATION	CU YD	60
50300225	CONCRETE STRUCTURES	CU YD	24.6
50300280	CONCRETE ENCASEMENT	CU YD	4.1
50400605	PRECAST PRESTRESSED CONCRETE DECK BEAMS (33" DEPTH)	SQ FT	1,920
50800105	REINFORCEMENT BARS	POUND	3,098
Δ 50900205	STEEL RAILING, TYPE S1	FOOT	164
51201400	FURNISHING STEEL PILES HP10X42	FOOT	372
51202305	DRIVING PILES	FOOT	372
51500100	NAME PLATES	EACH	1
67100100	MOBILIZATION	L SUM	1
Δ 78201000	TERMINAL MARKER -- DIRECT APPLIED	EACH	4

* SEE SPECIAL PROVISIONS Δ SPECIALTY ITEMS

SALINE COUNTY



LOCATION MAP

SCALE: 1" = 2 MILES

NET LENGTH OF IMPROVEMENT = 510.00 FT. = 0.0966 MILES

CLASSIFICATION : LOCAL ROAD (RURAL)
 ADT : 10
 DESIGN SPEED : 30 MPH

CONTRACT NO. 99479

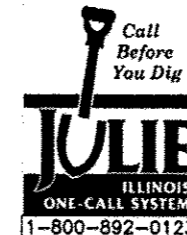


10-18-12

E. MILLER ENGINEERING, INC.
 CONSULTING ENGINEERS
 HARRISBURG, ILLINOIS

Edward W. Miller
 Edward W. Miller
 PROFESSIONAL ENGINEER
 #062-025277
 EXPIRES NOV. 30, 2013

PROPOSED IMPROVEMENT



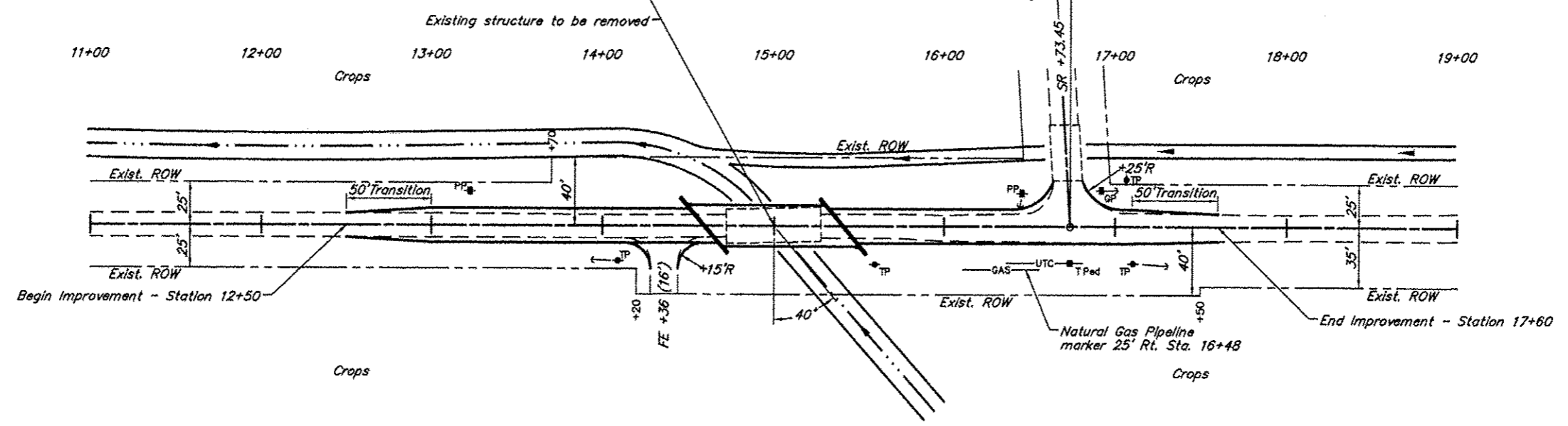
ILLINOIS DEPARTMENT OF TRANSPORTATION	
Approved	<u>11-02-12</u> <i>Ray Brown</i> East Eldorado Township Road Commissioner
Approved	<u>11-02-12</u> <i>[Signature]</i> Saline County Engineer
Passed	<u>11/9/2012</u> <i>Deri W. Hallock</i> District 9 Engineer of Local Roads and Streets
Releasing for Bid Based on Limited Review	<u>11/9/12</u> <i>Omer Omar</i> Deputy Director of Highways, Region 5 Engineer Illinois Department of Transportation

ROUTE	SECTION	COUNTY	TOTAL SHEETS	SHEET NO.
TR 272A	10-04119-00-BR	SALINE	12	2
PROJECT NO. BROS-165(35)			CONTRACT NO. 99479	

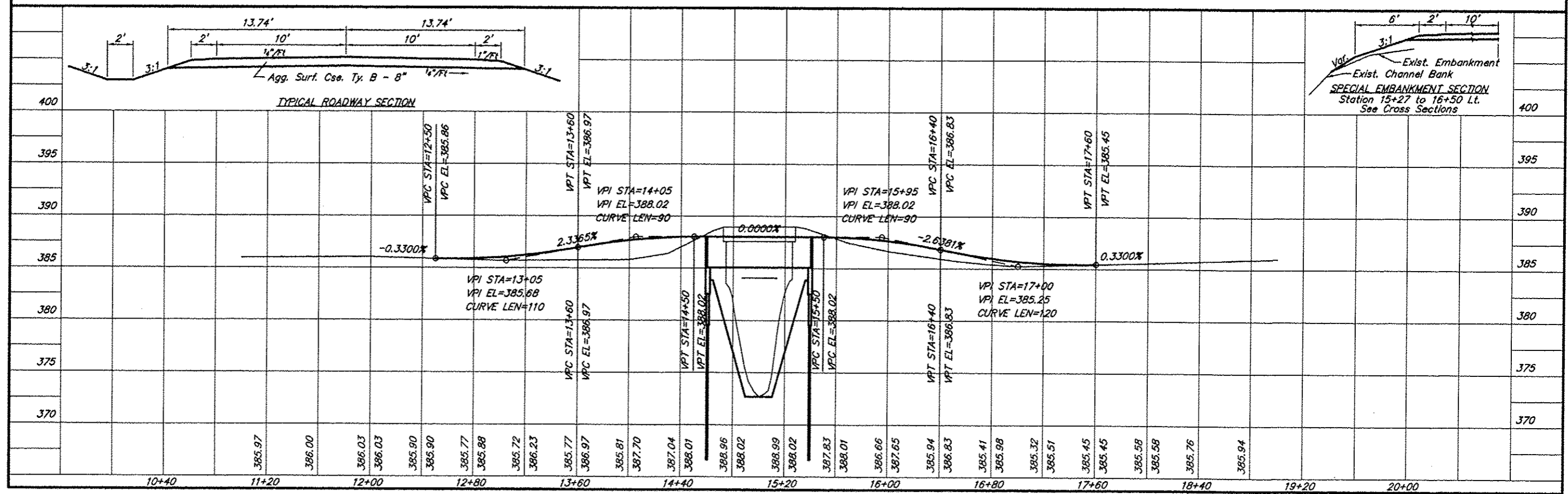
B.M. - Double nail in Power Pole
 20' Lt. Station 16+46
 Assumed Elev. 385.00
 (Approximately equal to 369.0 USGS)

Existing Structure - Timber deck on steel stringers with closed concrete abutments. 19.9' W x 55.6' L.

Station 15+00 - Single span precast prestressed concrete deck beam bridge
 82'-2 1/8" bk-bk Abutments
 Skewed 40° Rt. Forward

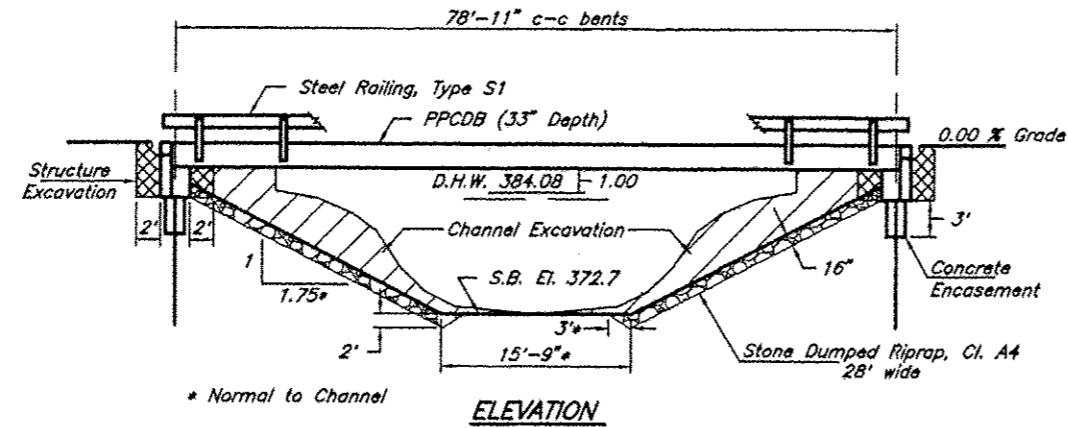


SCALES:
 1" = 80' HOR
 1" = 10' VER



B.M. - Double nail in Power Pole
 20' Lt. Station 16+46
 Assumed Elev. 385.00
 (Approximately equal to 369.0 USGS)

ROUTE	SECTION	COUNTY	TOTAL SHEETS	SHEET NO.
TR 272A	10-04119-00-BR	SALINE	12	3
PROJECT NO. BROS-165(35)			CONTRACT NO. 99479	



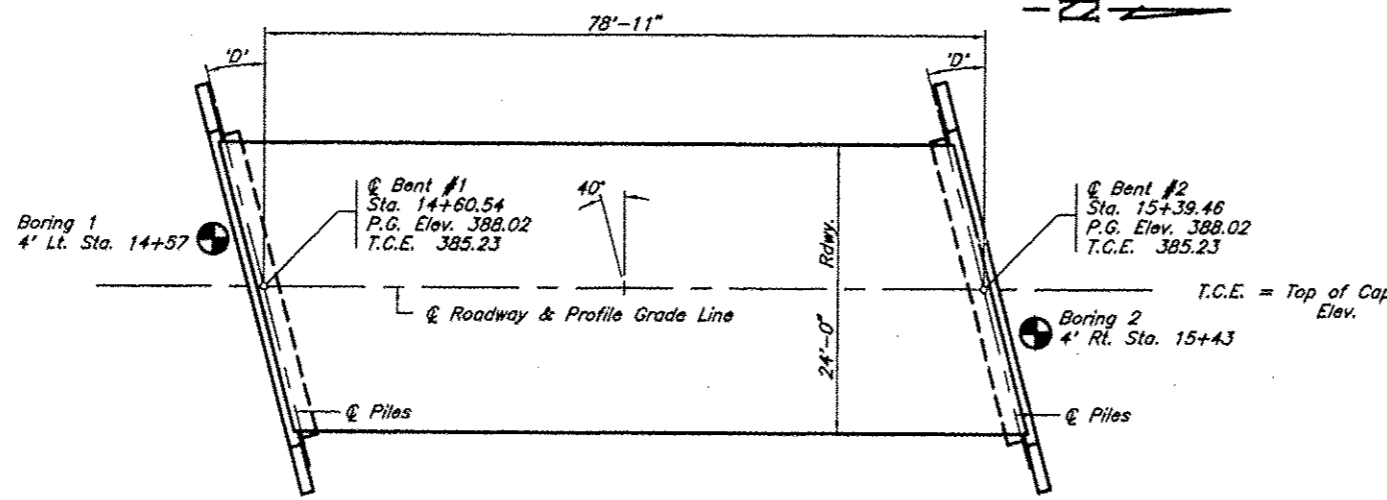
Existing Structure - Timber deck on steel stringers with closed concrete abutments 19.9' W x 55.6' L

GENERAL NOTES

- Steel H piles shall meet AASHTO M270 Grade 50 specifications.
- See special provisions for boring logs.
- A Corrosion inhibitor, as covered in the Standard Specifications, shall be used in the precast prestressed concrete deck beams.

TOTAL BILL OF MATERIAL

Item	Unit	Super	Sub.		Total
			Piers	Abuts.	
Channel Excavation	Cu. Yds.			271	271
Stone Dumped Riprap, Cl. A4	Tons			197	197
Removal of Existing Structures	Each				1
Structure Excavation	Cu. Yds.			60	60
Concrete Structures	Cu. Yds.			24.6	24.6
Concrete Encasement	Cu. Yds.			4.1	4.1
P.P. Conc. Dk. Bm. 33 Dp.	Sq. Ft.	1920			1920
Reinforcement Bars	Pound			3098	3098
Steel Railing, Type S1	Foot	164			164
Furnishing Steel Piles HP10X42	Foot			372	372
Driving Piles	Foot			372	372
Name Plates	Each			1	1



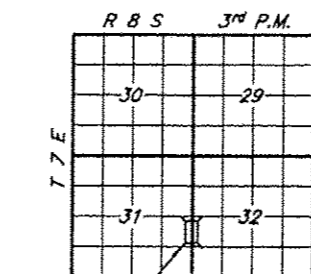
PLAN

Skew Angle "D" = 40° Right Forward

SPOIL BANK DITCH
 SEC. 10-04119-00-BR BUILT 20—
 EAST ELDORADO TOWNSHIP
 SALINE COUNTY
 LOADING HL-93
 STR. NO. 083-3242

LETTERING FOR NAME PLATE

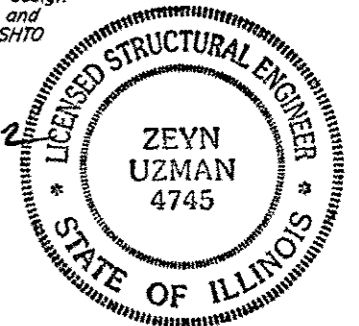
Locate Name Plate at southeast Corner of Bridge (See Sheet 10)



LOCATION SKETCH

I certify that to the best of my knowledge, information and belief, this bridge design is structurally adequate for the design loading shown on the plans. The design is an economical one for the type of structure and comply with the requirements of the current AASHTO LRFD Specifications.

Zeyn B. Uzman
 S.E. 081-4745
 Expires Nov. 30, 2012



PILE DATA (2-ABUTS.)

Type & Size : HP10X42
 Nominal Required Bearing : 242 kips
 Factored Resistance Available : 133 kips
 Estimated Length : 33 Ft Bent #1, 29 Ft Bent #2
 Number Required : 12

DESIGN SPECIFICATIONS

2012 AASHTO LRFD Bridge Design Specifications and all applicable interims.

LOADING HL-93

Allow 50#/sq. ft. for future wearing surface

SEISMIC DATA

Soil Site Class = D
 Design Spectral Acceleration at 0.2 sec. (S_{ps}) = 0.780
 Design Spectral Acceleration at 1.0 sec. (S_{p1}) = 0.330
 Seismic Performance Zone (SPZ) = 3

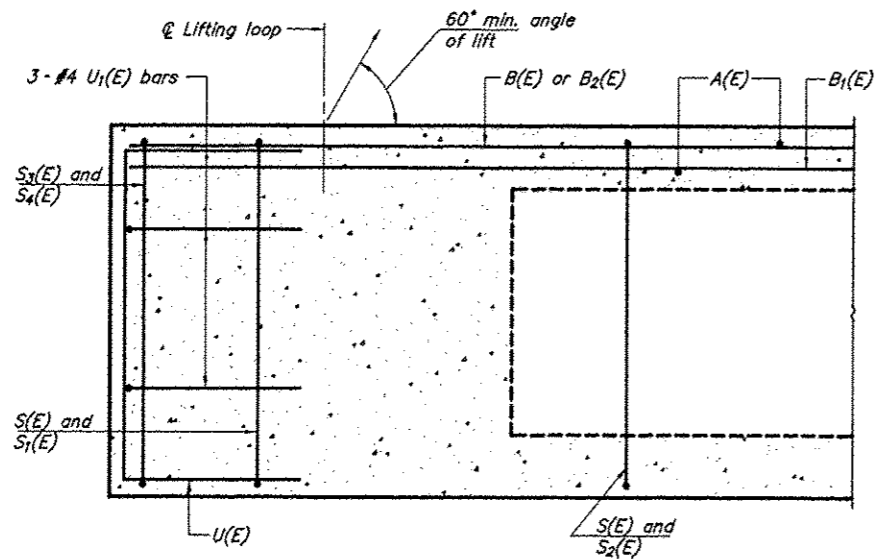
WATERWAY INFORMATION

Drainage Area = 6.87 Sq. Mi.		Low Grade Elev. = 385.43		At Sta. 17+47					
Flood	Freq. Yr.	Q C.F.S.	Opening Sq. Ft.		Head-Ft.		Headwater El.		
			Exist.	Prop.	Natural H.W.E.	Exist. Prop.	Exist. Prop.		
Design	15	1750	250.1	405.4	384.08	1.82	0.04	385.90	384.12
Base	100	2850	284.9	456.9	384.97	1.51	0.88	386.48	385.85
Overtopping	± 64	2588		445.9	384.78		0.65		385.43
Max. Calc.	500								

Over Road Flow (Sq Ft): Exist. 78.4 1131.7 Prop. 32.7

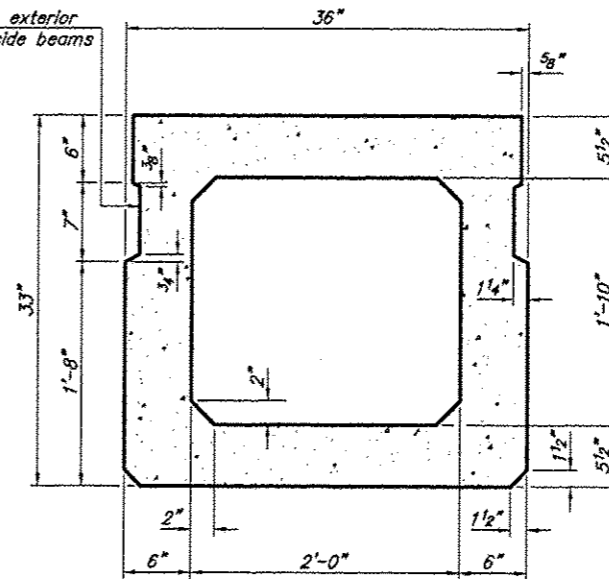
GENERAL PLAN & ELEVATION
 TOWNSHIP ROUTE 272A (LINDALE ROAD)
 SPOIL BANK DITCH
 SECTION 10-04119-00-BR
 SALINE COUNTY
 STRUCTURE 083-3242

ROUTE	SECTION	COUNTY	TOTAL SHEETS	SHEET NO
TR 272A	10-04119-00-BR	SALINE	12	4
PROJECT NO. BROS-165(35)			CONTRACT NO. 99479	

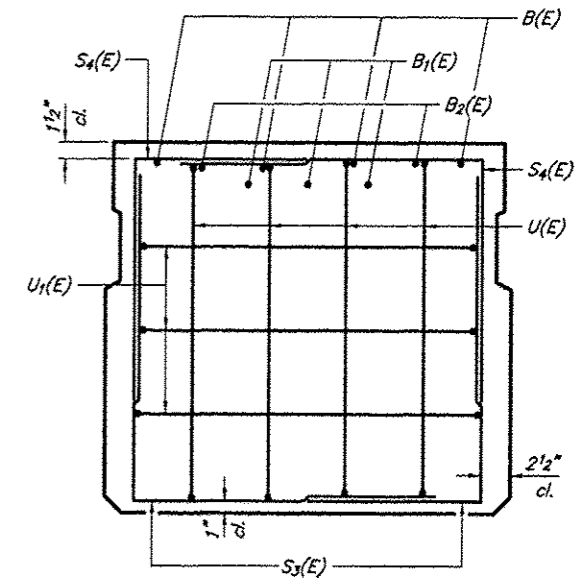


SECTION C-C

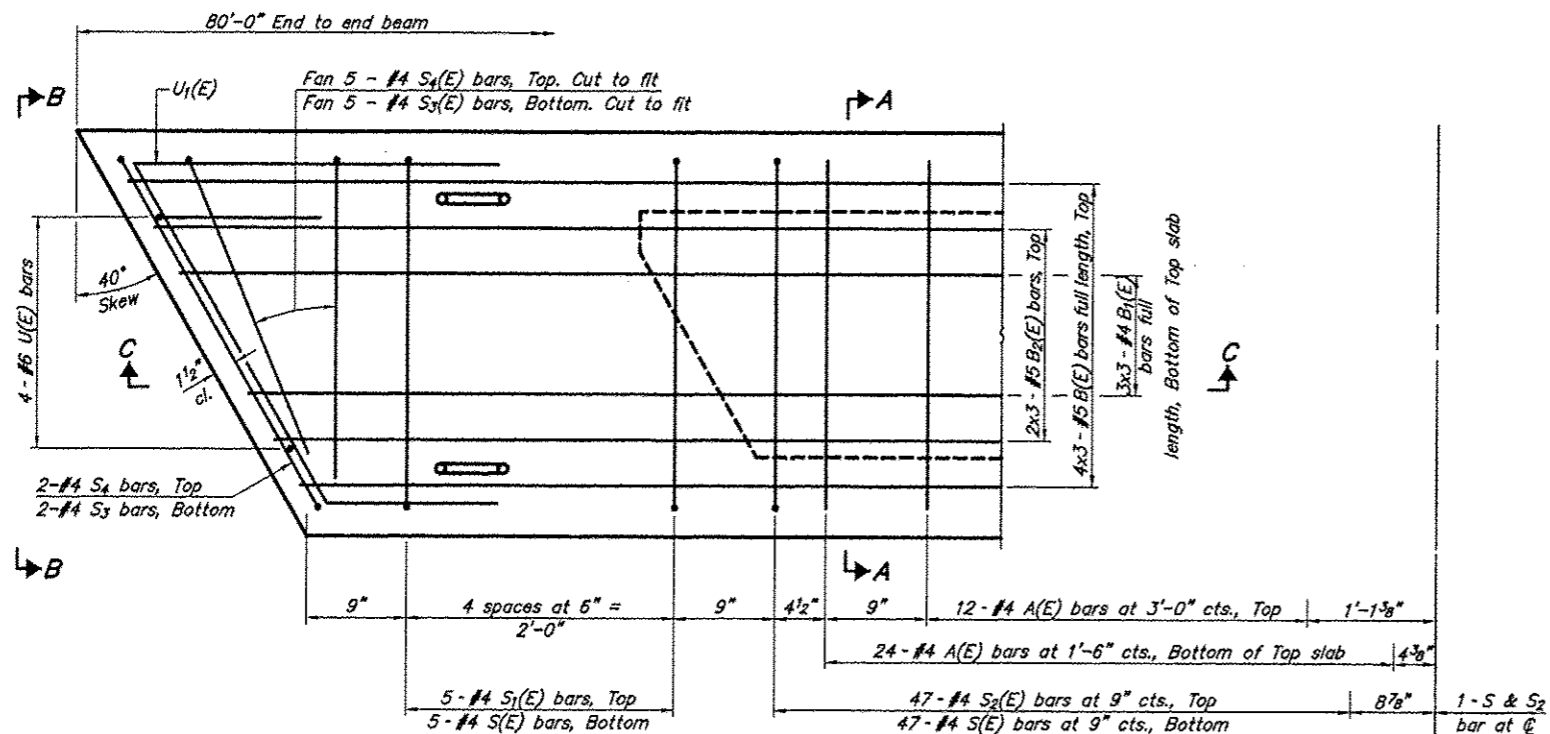
Omit key on exterior face of outside beams



SECTION A-A
(Showing dimensions)

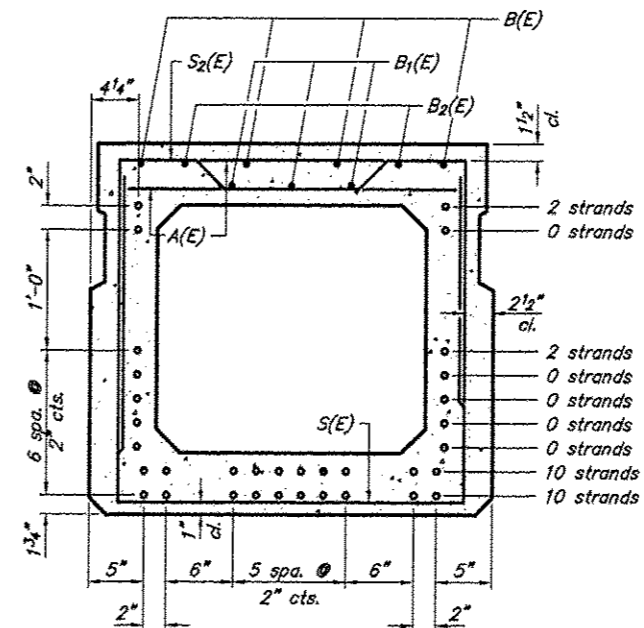


VIEW B-B



PLAN VIEW

Note: Spacing of S(E) and S2(E) bars may be adjusted up to 4" in the immediate area of the transverse tie diaphragms to miss the block outs for the transverse ties.



SECTION A-A

(Showing reinforcement and permissible strand locations)

Note: Place the number of strands specified in each row symmetrically about the centerline of beam in the permissible strand locations shown.

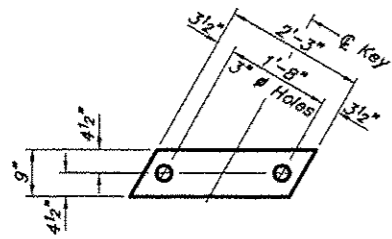
BAR LIST
ONE BEAM ONLY
(For information only)

Bar	No.	Size	Length	Shape
A(E)	72	#4	2'-7"	—
B(E)	12	#5	28'-0"	—
B1(E)	9	#4	27'-8"	—
B2(E)	6	#5	28'-0"	—
S(E)	105	#4	7'-5"	—
S1(E)	10	#4	6'-3"	—
S2(E)	95	#4	6'-5"	—
S3(E)	14	#4	5'-0"	—
S4(E)	14	#4	4'-5"	—
U(E)	8	#6	5'-0"	—
U1(E)	6	#4	7'-11"	—

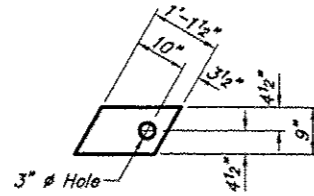
Bar Laps #4 bars = 1'-8"
#5 bars = 2'-2"

33" X 36" PPC DECK BEAM
TOWNSHIP ROUTE 272A (LINDALE ROAD)
SPOIL BANK DITCH
SECTION 10-04119-00-BR
SALINE COUNTY
STRUCTURE 083-3242

ROUTE	SECTION	COUNTY	TOTAL SHEETS	SHEET NO
TR 272A	10-04119-00-BR	SALINE	12	5
PROJECT NO. BROS-165(35)			CONTRACT NO. 99479	



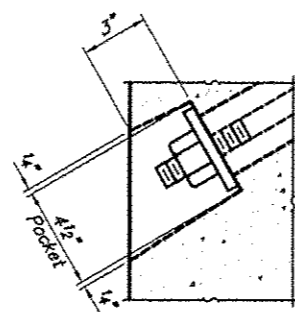
FABRIC BEARING PAD
(Interior)



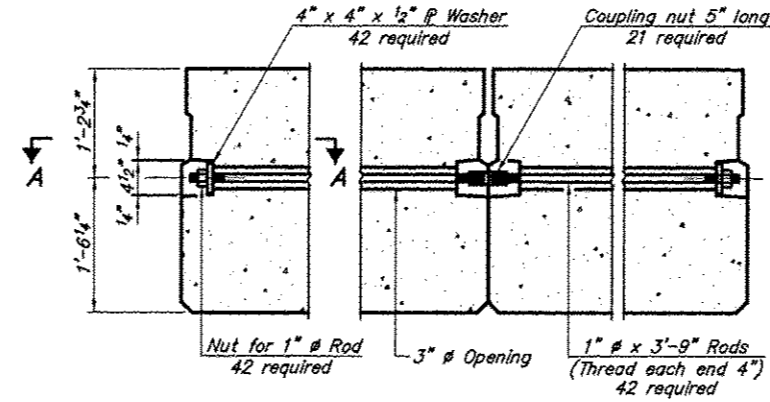
FABRIC BEARING PAD
(Exterior)

FIXED

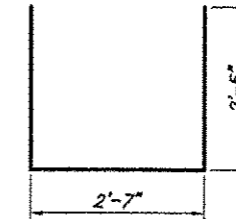
Note: Omit holes when using expansion bearings.



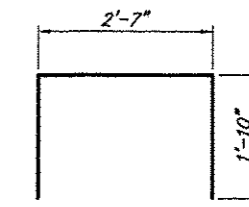
SECTION A-A



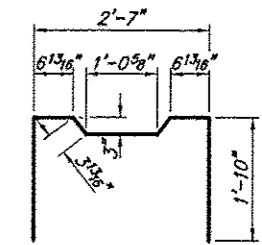
TYPICAL TRANSVERSE TIE ASSEMBLY



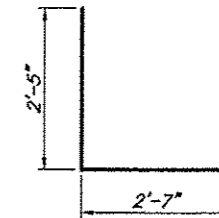
BAR S(E)



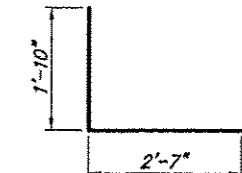
BAR S1(E)



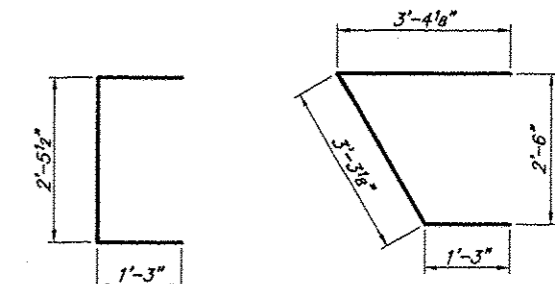
BAR S2(E)



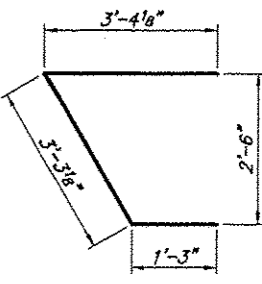
BAR S3(E)



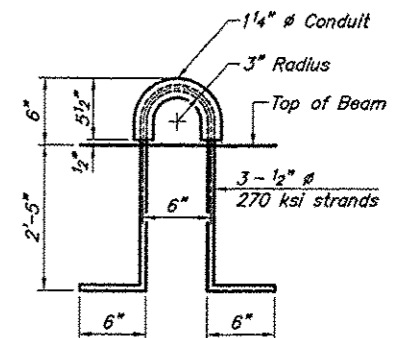
BAR S4(E)



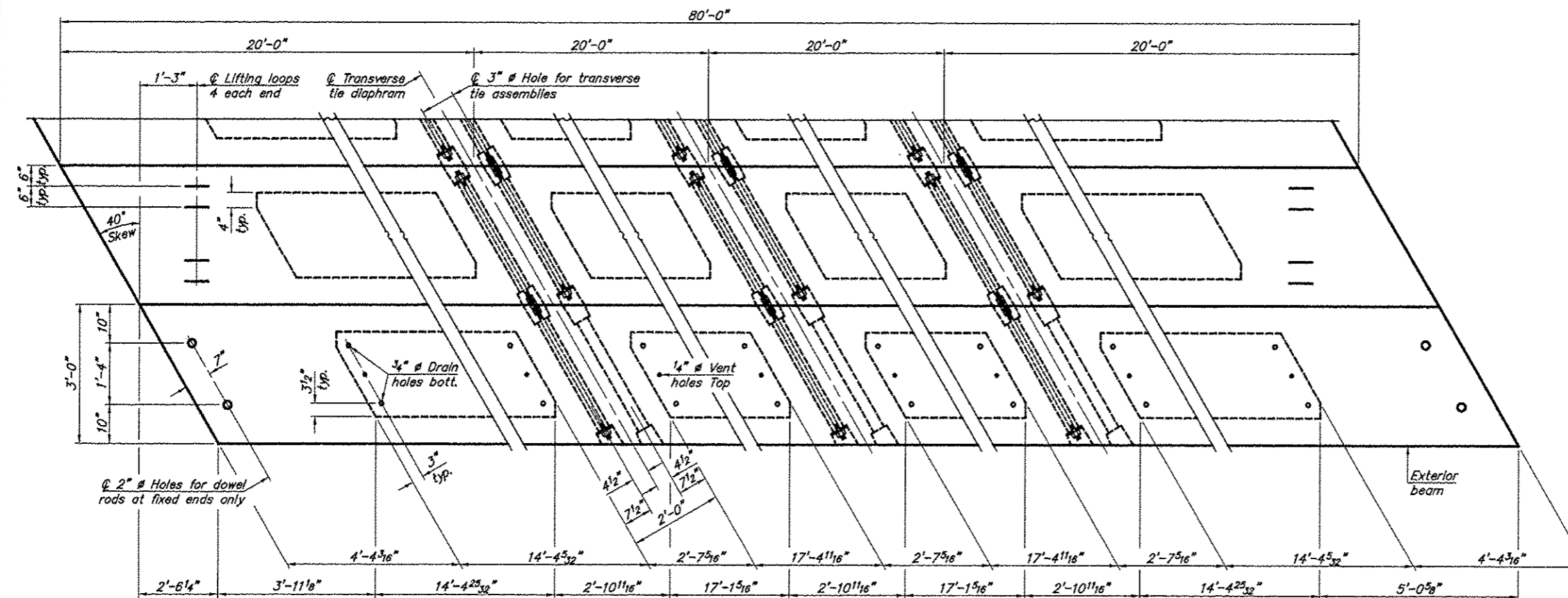
BAR U(E)



BAR U1(E)

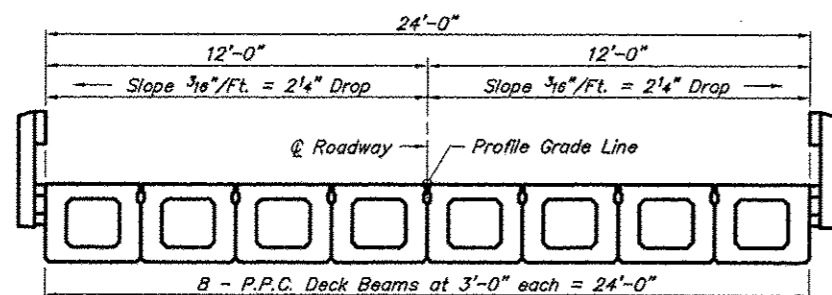


LIFTING LOOP DETAIL



PLAN VIEW

Note: Connect beams in pairs with the transverse tie configuration shown.



CROSS SECTION

NOTES

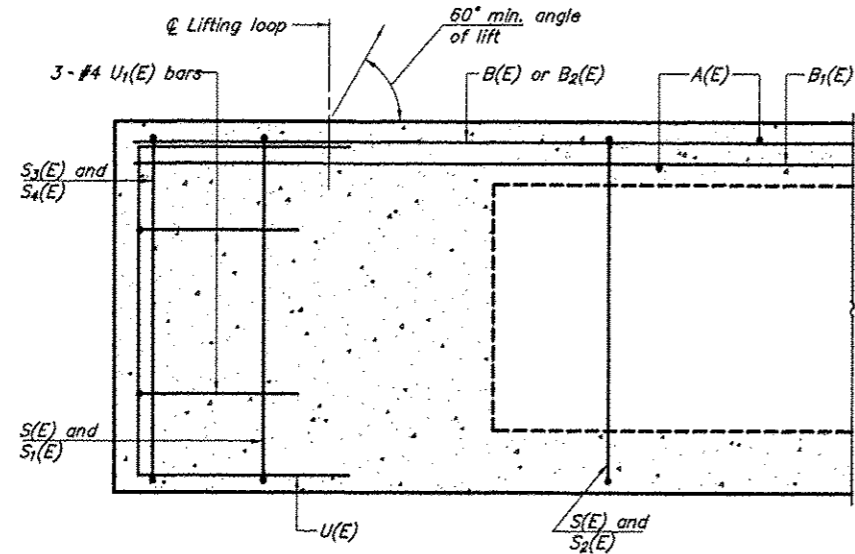
Prestressing steel shall be uncoated high strength, low relaxation 7-wire strand, Grade 270. The nominal diameter shall be 1/2" and the nominal cross-sectional area shall be 0.153 sq. in. The 1" rods in the transverse tie assembly shall be tightened to a snug fit and the threads set. Pockets on exterior faces of bridge shall be filled with grout after transverse tie assembly is in place. Reinforcement bars shall conform to ASTM A 706, Grade 60. (See Special Provisions). Two 1/8" fabric adjusting shims of the dimensions of the exterior bearing pad shall be provided for each bearing pad location. A minimum 2 1/2" lifting pin shall be used to engage the lifting loops during handling. Corrosion inhibitor, per Article 1020.05(b)(12) and 1021.06 of the Standard Specifications, shall be used in the concrete for precast prestressed concrete deck beams. Compressive strength of prestressed concrete, f'c, shall be 6000 psi. Compressive strength of prestressed concrete at release, f'ci, shall be 5000 psi.

BILL OF MATERIAL

Material	Sq. Ft.	Quantity
Precast Prestressed Concrete Deck Beams (33" depth)		1920

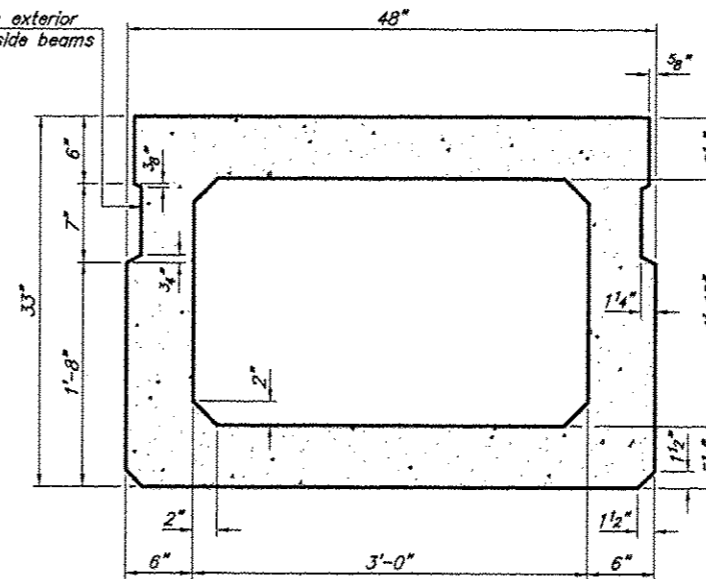
33" X 36" PPC DECK BEAM DETAILS
TOWNSHIP ROUTE 272A (LINDALE ROAD)
SPOIL BANK DITCH
SECTION 10-04119-00-BR
SALINE COUNTY
STRUCTURE 083-3242

ROUTE	SECTION	COUNTY	TOTAL SHEETS	SHEET NO
TR 272A	10-04119-00-BR	SALINE	12	6
PROJECT NO. BROS-165(35)			CONTRACT NO. 99479	

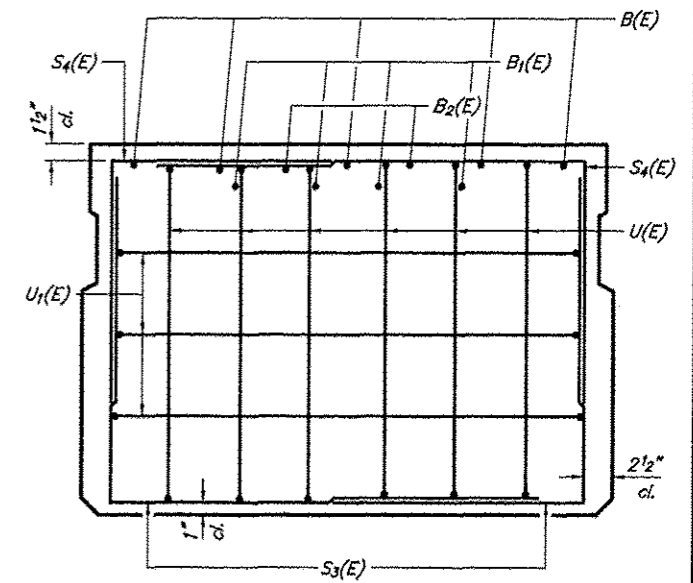


SECTION C-C

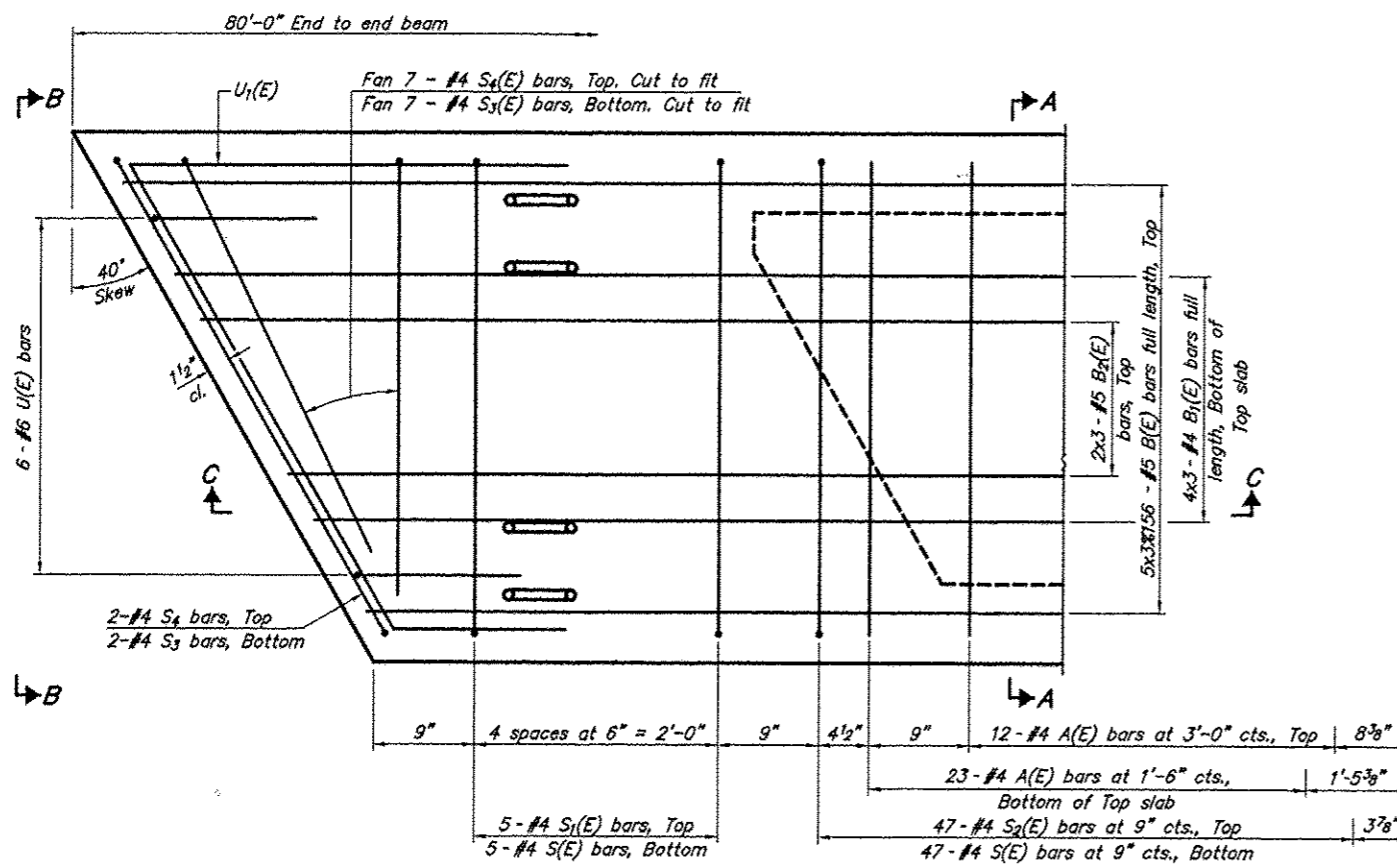
Omit key on exterior face of outside beams



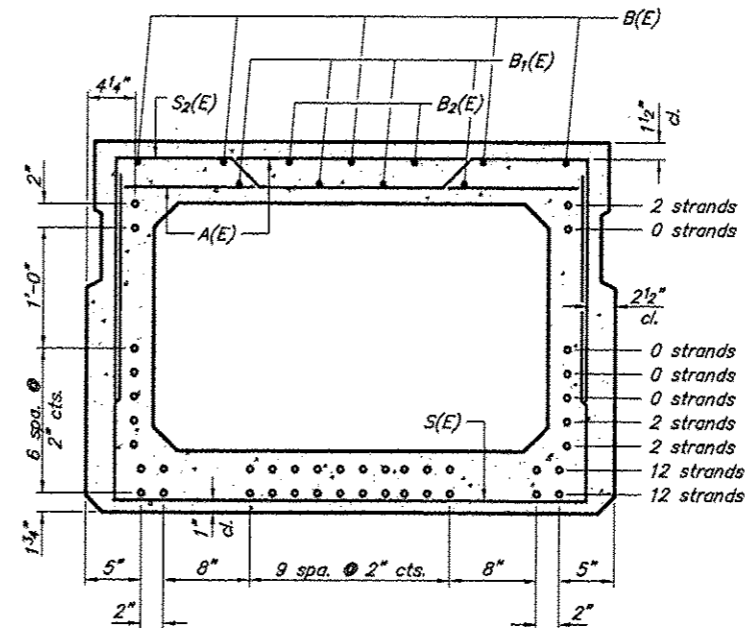
SECTION A-A
(Showing dimensions)



VIEW B-B



PLAN VIEW



SECTION A-A

(Showing reinforcement and permissible strand locations)
Note: Place the number of strands specified in each row symmetrically about the centerline of beam in the permissible strand locations shown.

BAR LIST
ONE BEAM ONLY
(For information only)

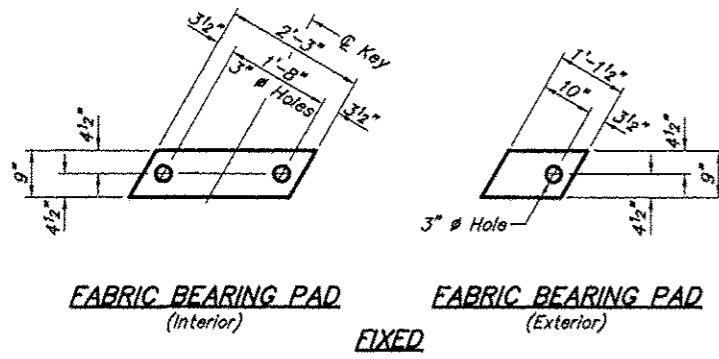
Bar	No.	Size	Length	Shape
A(E)	71	#4	3'-7"	—
B(E)	15	#5	28'-0"	—
B1(E)	12	#4	27'-8"	—
B2(E)	6	#5	28'-0"	—
S(E)	104	#4	8'-5"	□
S1(E)	10	#4	7'-3"	□
S2(E)	94	#4	7'-6"	□
S3(E)	18	#4	5'-8"	□
S4(E)	18	#4	5'-1"	□
U(E)	12	#6	5'-0"	□
U1(E)	6	#4	10'-1"	▽

Bar Laps #4 bars = 1'-8"
#5 bars = 2'-2"

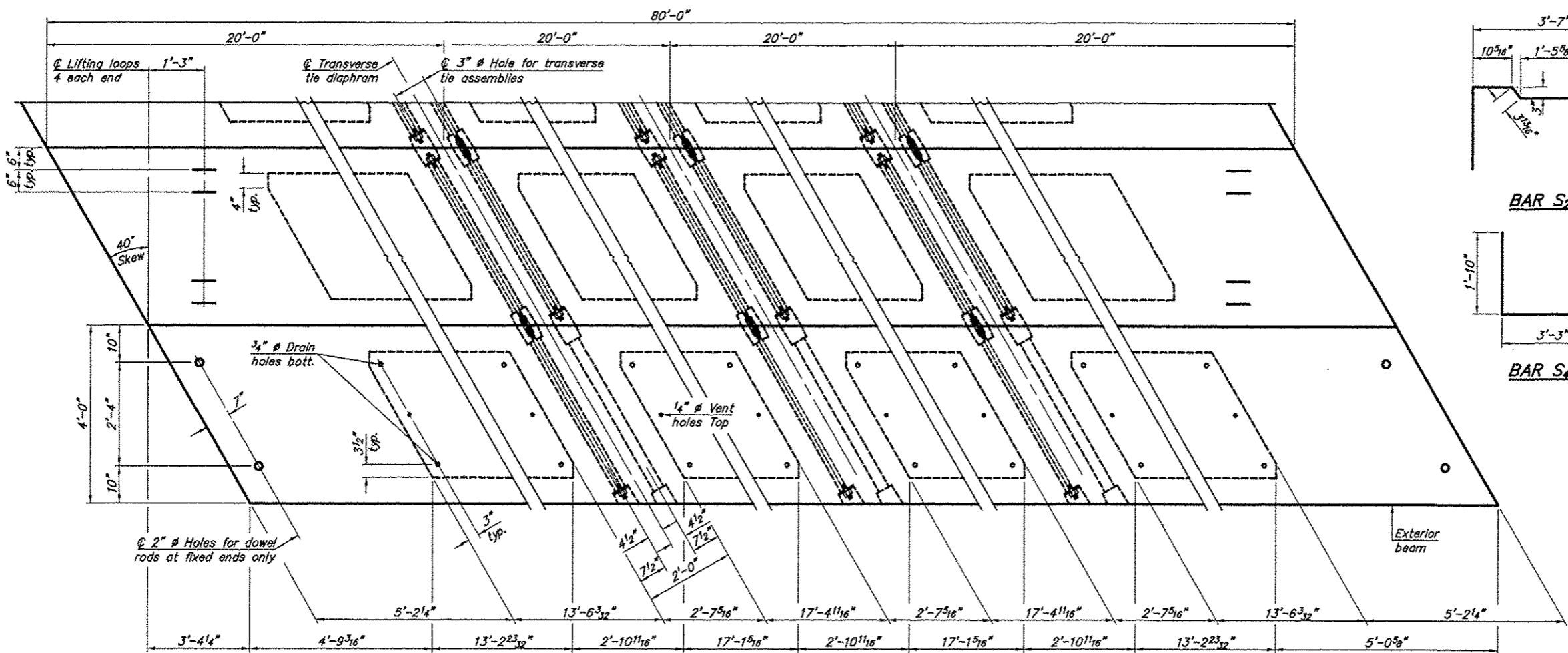
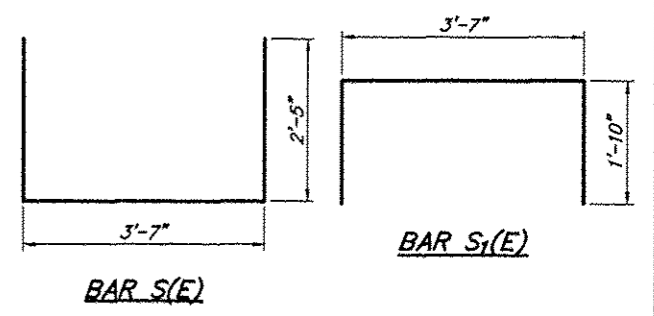
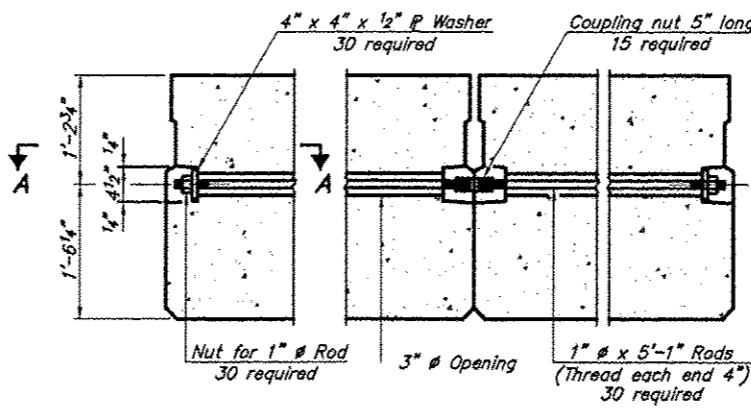
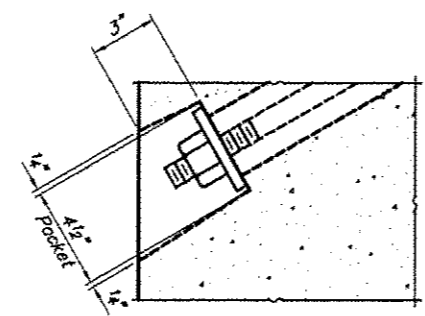
Note: Spacing of S(E) and S2(E) bars may be adjusted up to 4" in the immediate area of the transverse tie diaphragms to miss the block outs for the transverse ties.

33" X 48" PPC DECK BEAM
TOWNSHIP ROUTE 272A (LINDALE ROAD)
SPOIL BANK DITCH
SECTION 10-04119-00-BR
SALINE COUNTY
STRUCTURE 083-3242

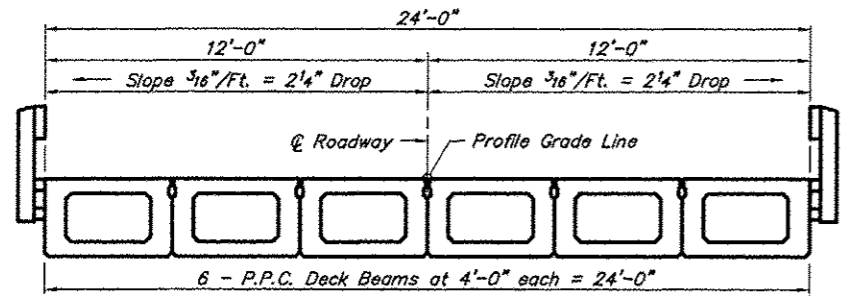
ROUTE	SECTION	COUNTY	TOTAL SHEETS	SHEET NO
TR 272A	10-04119-00-BR	SALINE	12	7
PROJECT NO. BROS-165(35)			CONTRACT NO. 99479	



FIXED
 Note: Omit holes when using expansion bearings.

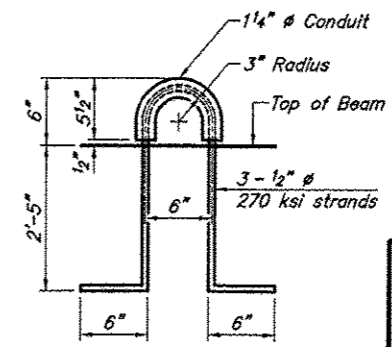


Note: Connect beams in pairs with the transverse tie configuration shown.



NOTES

Prestressing steel shall be uncoated high strength, low relaxation 7-wire strand, Grade 270. The nominal diameter shall be 1/2" and the nominal cross-sectional area shall be 0.153 sq. in. The 1" rods in the transverse tie assembly shall be tightened to a snug fit and the threads set. Pockets on exterior faces of bridge shall be filled with grout after transverse tie assembly is in place.
 Reinforcement bars shall conform to ASTM A 706, Grade 60. (See Special Provisions).
 Two 1/8" fabric adjusting shims of the dimensions of the exterior bearing pad shall be provided for each bearing pad location.
 A minimum 2 1/2" lifting pin shall be used to engage the lifting loops during handling.
 Corrosion inhibitor, per Article 1020.05(b)(12) and 1021.06 of the Standard Specifications, shall be used in the concrete for precast prestressed concrete deck beams.
 Compressive strength of prestressed concrete, f_c, shall be 6000 psi.
 Compressive strength of prestressed concrete at release, f_{ci}, shall be 5000 psi.

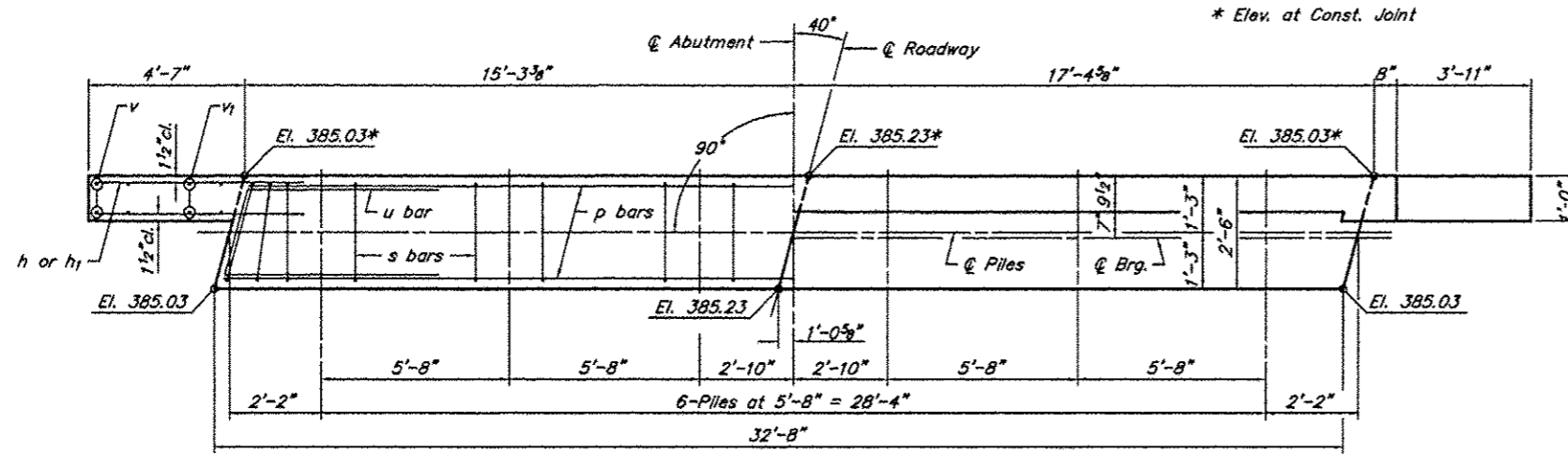


BILL OF MATERIAL

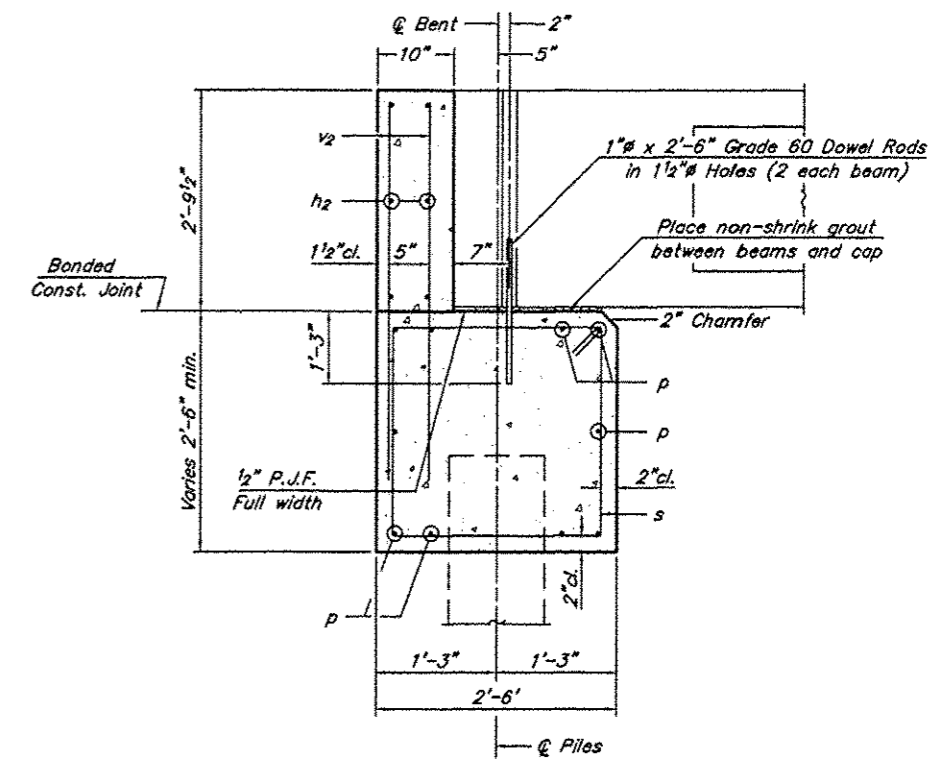
Precast Prestressed Conc. Deck Bms. (33" depth)	Sq. Ft.	1920
---	---------	------

33" X 48" PPC DECK BEAM DETAILS
 TOWNSHIP ROUTE 272A (LINDALE ROAD)
 SPOIL BANK DITCH
 SECTION 10-04119-00-BR
 SALINE COUNTY
 STRUCTURE 083-3242

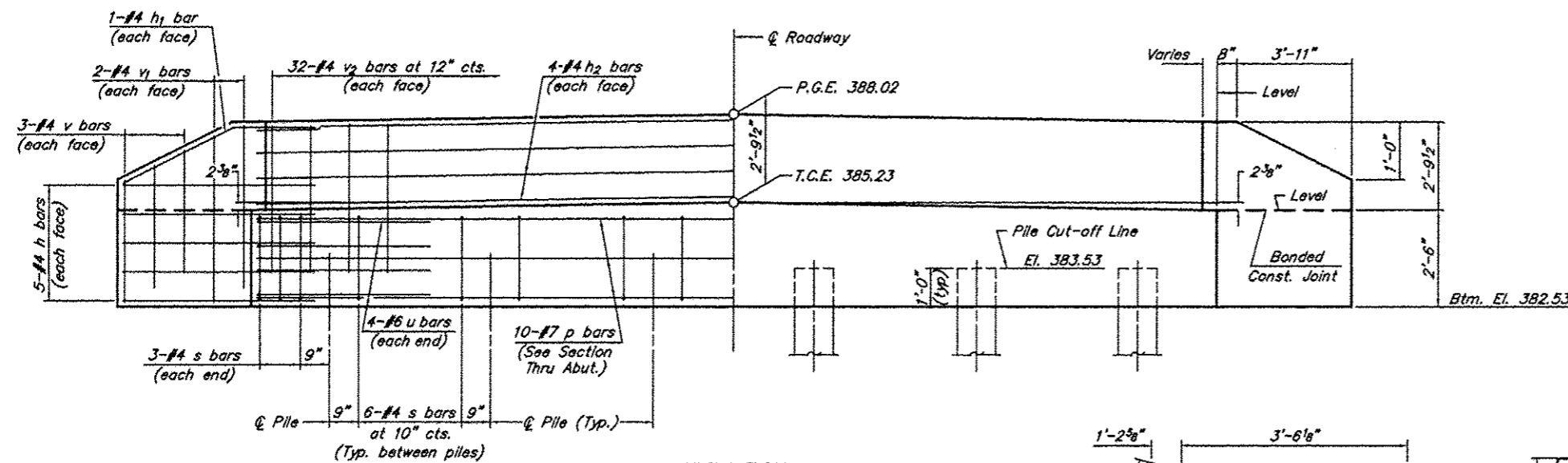
ROUTE	SECTION	COUNTY	TOTAL SHEETS	SHEET NO
TR 272A	10-04119-00-BR	SALINE	12	8
PROJECT NO. BROS-165(35)			CONTRACT NO. 99479	



PLAN



SECTION THRU ABUT.
(At Right Angles)



ELEVATION

BILL OF MATERIAL FOR ONE ABUTMENT

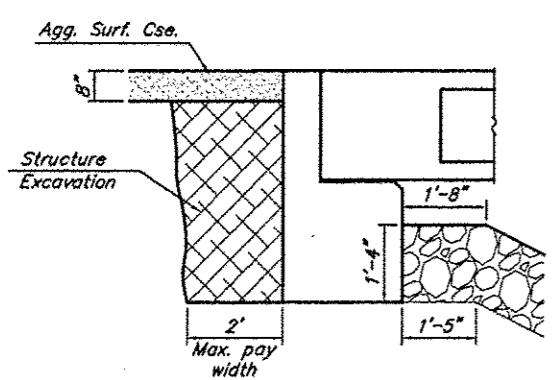
Bar	No.	Size	Length	Shape
h	20	#4	6'-9"	—
h1	4	#4	6'-9"	—
h2	8	#4	32'-4"	—
P	10	#7	32'-4"	—
s	36	#4	9'-5"	□
u	8	#6	10'-11"	—
v	12	#4	4'-2"	—
v1	8	#4	5'-0"	—
v2	64	#4	4'-5"	—
Concrete Structures			12.3	Cu. Yds.
Reinforcement Bars			1549	Lbs.

NOTES

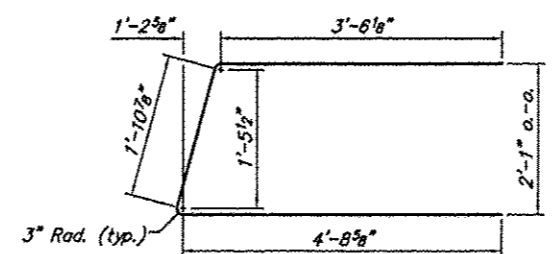
- The Backwall and the portion of the Wingwalls above the bonded construction joint shall be cast against the in-place beam.
- Reinforcement bars shall conform to A.A.S.H.T.O. M-31, M-42 or M-53, Grade 60.

DESIGN STRESSES

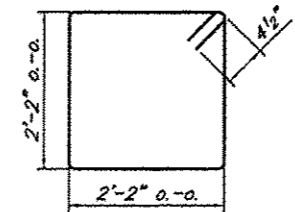
$f_c = 3,500 \text{ psi}$
 $f_y = 60,000 \text{ psi}$



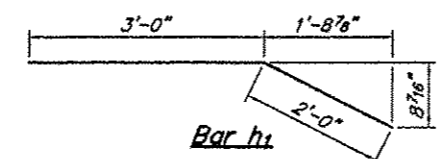
BACKFILL & BERM DETAIL
(At Right Angles to Abut.)



Bar u



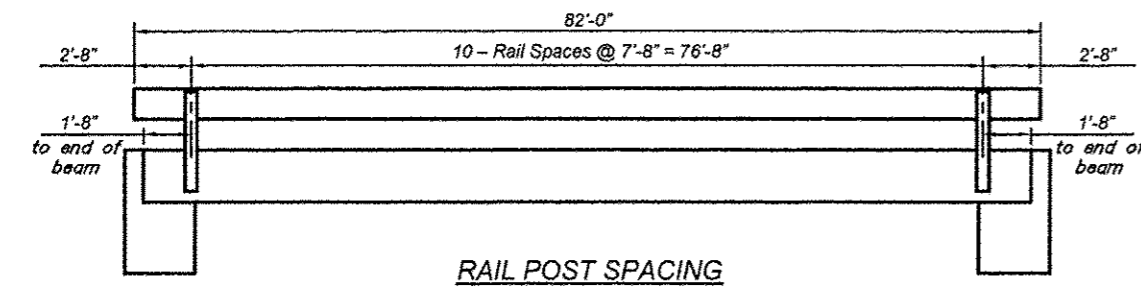
Bar s



Bar h1

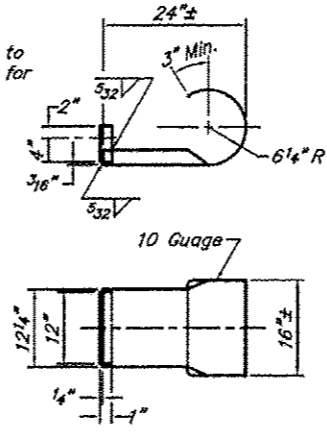
ABUTMENT
TOWNSHIP ROUTE 272A (LINDALE ROAD)
SPOIL BANK DITCH
SECTION 10-04119-00-BR
SALINE COUNTY
STRUCTURE 083-3242

ROUTE	SECTION	COUNTY	TOTAL SHEETS	SHEET NO.
TR 272A	10-04119-00-BR	SALINE	12	9
PROJECT NO. BROS-165(35)			CONTRACT NO. 99479	

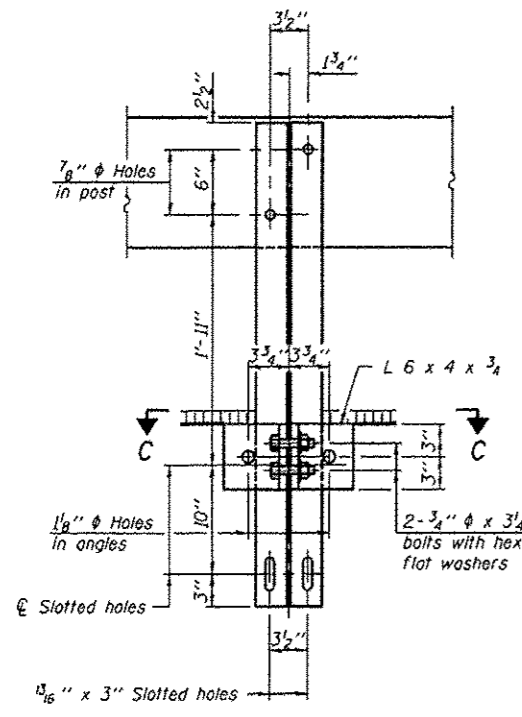
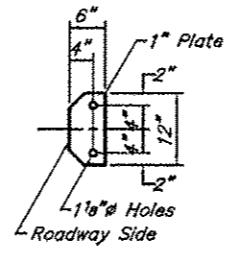
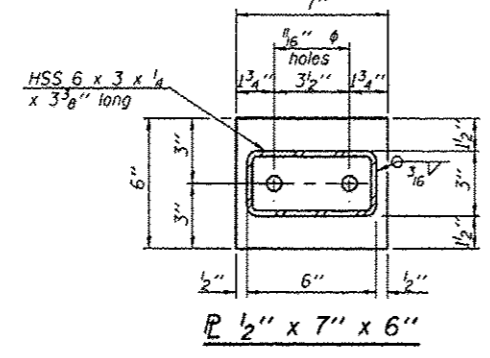
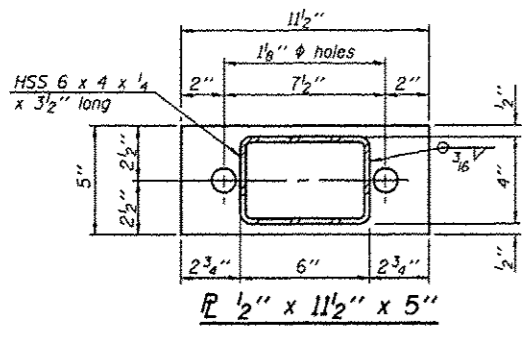


RAIL POST SPACING

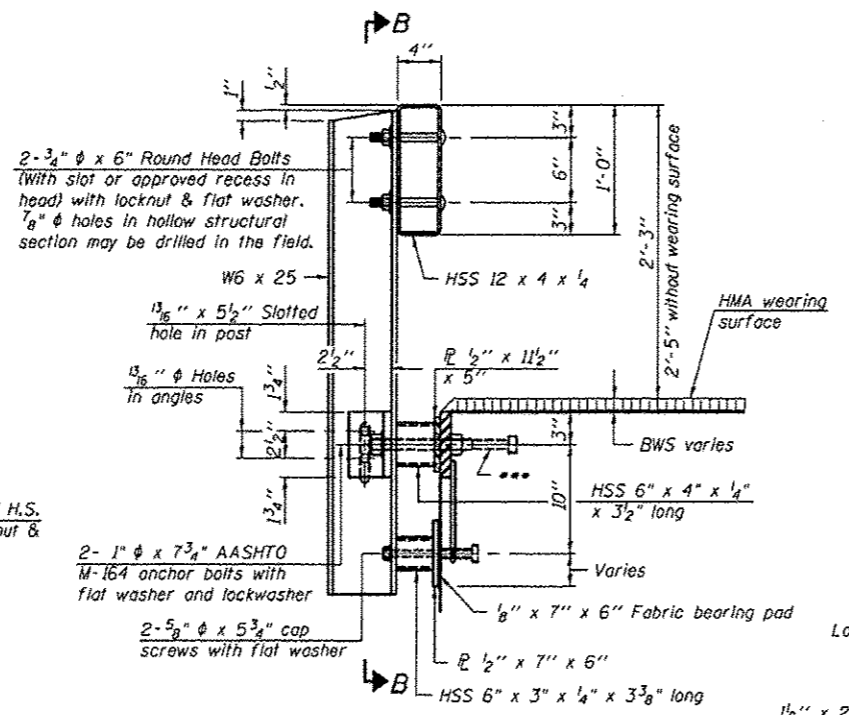
NOTE: Curled End Section to be included in the cost for Steel Railing, Type S1 Four (4) required.



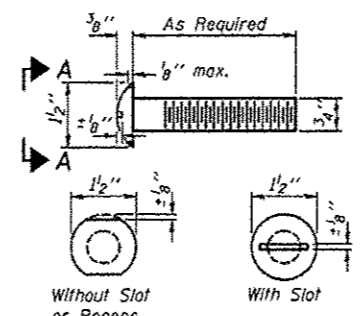
CURLLED END SECTION DETAILS



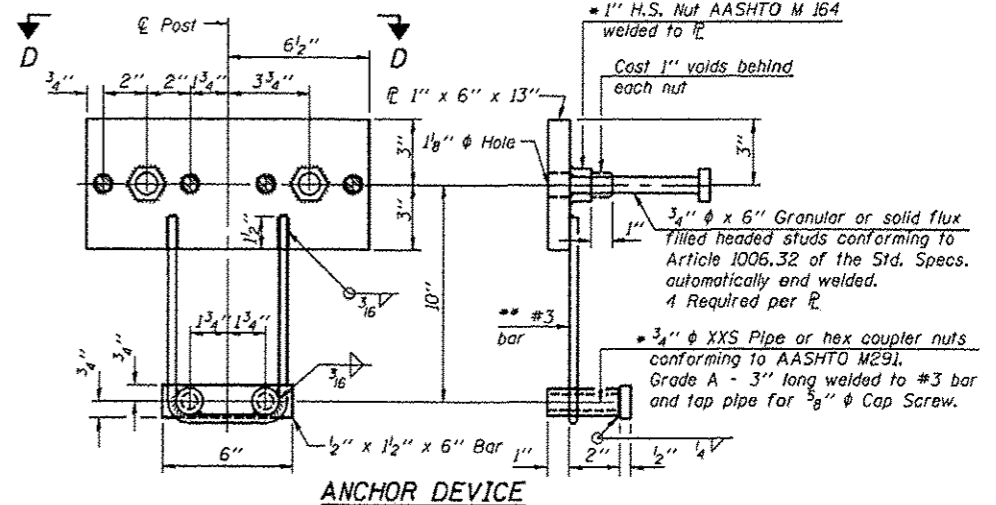
SECTION B-B



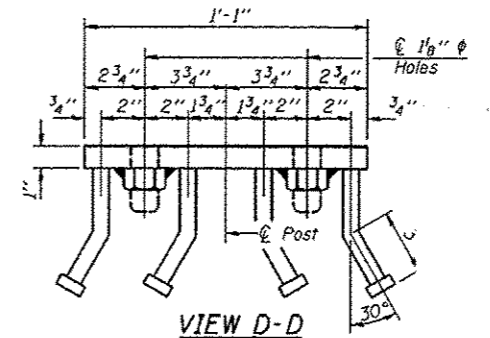
SECTION AT RAILING POST



VIEW A-A ROUND HEAD BOLT



ANCHOR DEVICE

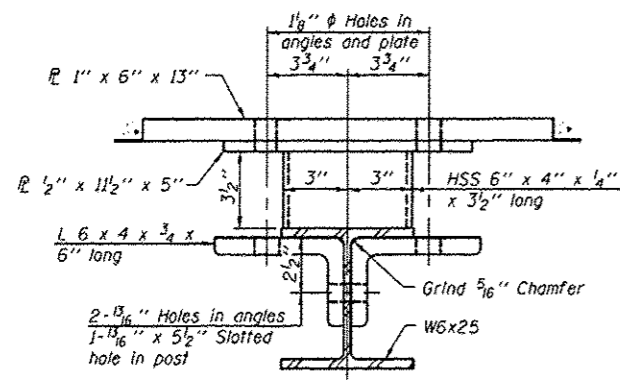


VIEW D-D

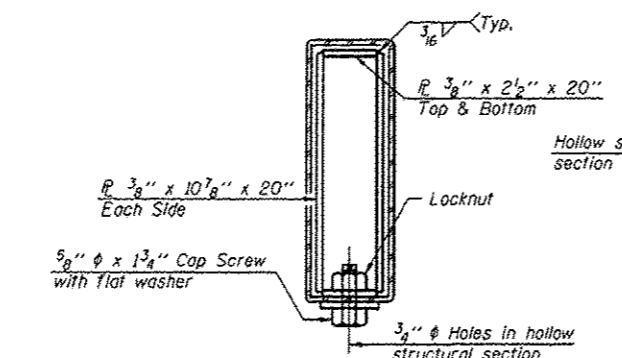
- Notes:
- All field drilled holes shall be coated with an approved zinc rich paint before erection.
 - For multi-span bridges, sufficient 1/4" x 6" x 1'-2" galvanized steel shims shall be provided to align rail between adjacent spans. Cost included with Steel Railing, Type S-1.
 - All steel rail elements shall be galvanized according to Article 509.05 of the Standard Specifications.
 - Threaded areas shall be plugged or blocked off during casting of beam.
 - Whenever the lower insert assemblies interfere with strand locations, the #3 bars shall be cut and adjusted in order to allow raising or lowering of the lower inserts. Maximum adjustment not to exceed 1/2".
 - The studs of the anchor devices shall be placed below the top reinforcement bars and the outermost longitudinal reinforcement bar shall be placed directly above the studs of the rail post anchor device.
 - 10'-9" Maximum Post Spacing

BILL OF MATERIAL

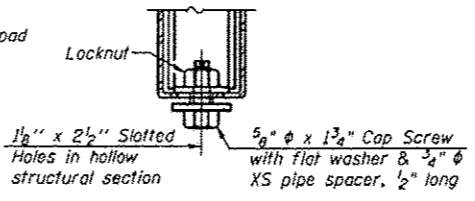
Item	Unit	Quantity
Steel Railing, Type S-1	Foot	164



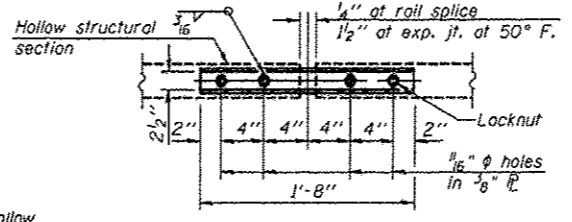
SECTION C-C



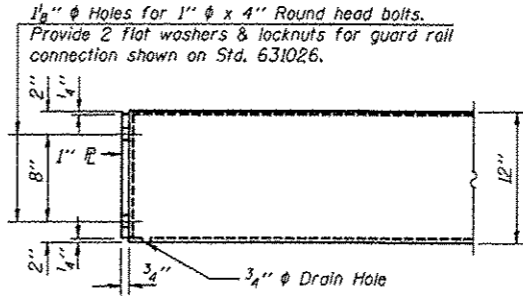
SECTIONS AT RAIL SPLICE



RAIL SPLICE CONNECTION AT EXPANSION JT.



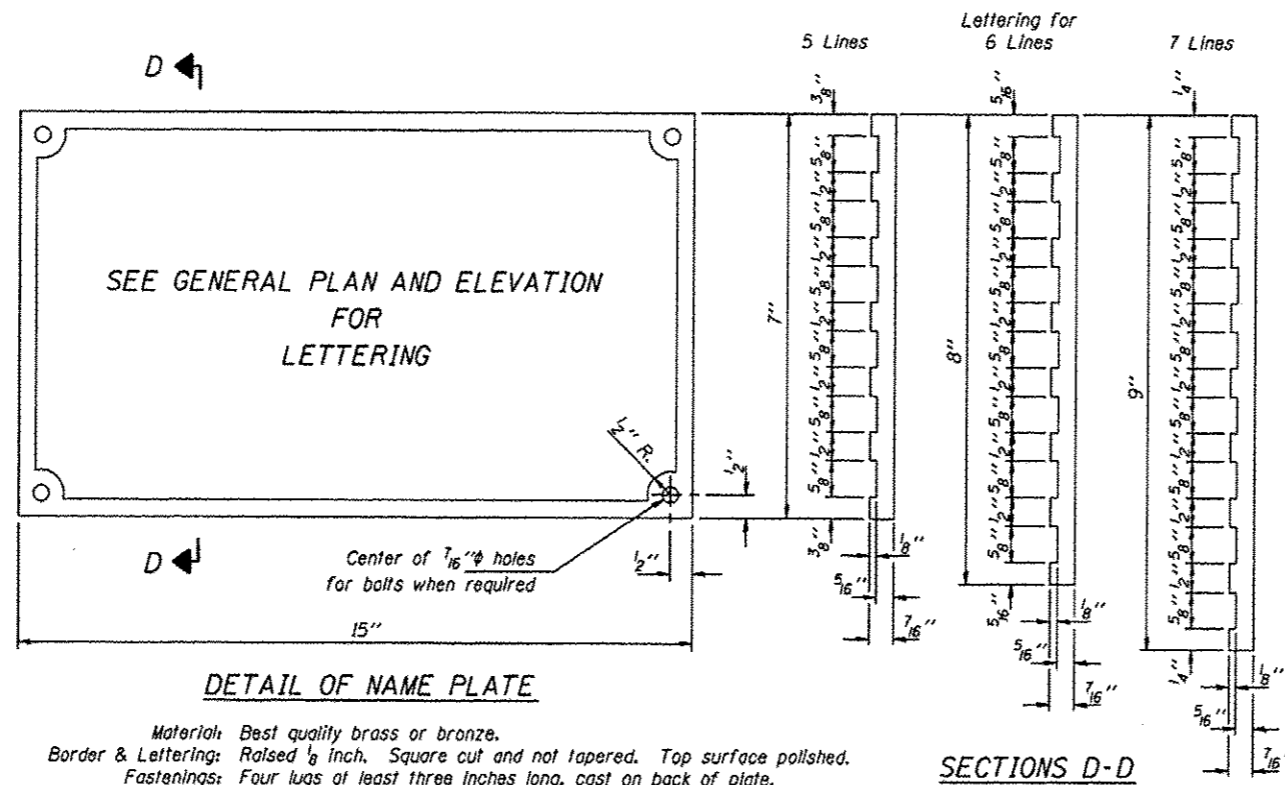
PLAN-BOTT. SPLICE P TYPICAL



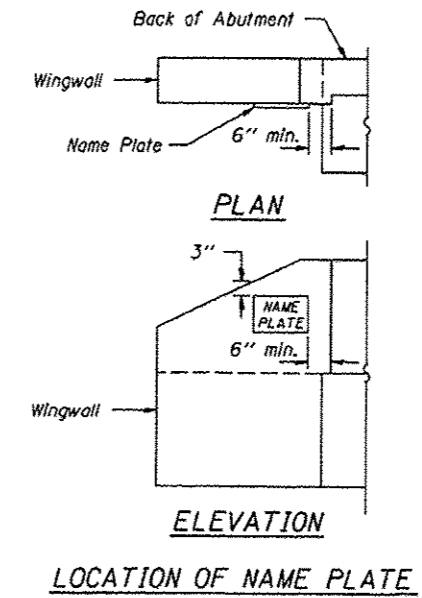
END OF RAIL DETAILS

**STEEL RAILING, TYPE S-1
TOWNSHIP ROUTE 272A (LINDALE ROAD)
SPOIL BANK DITCH
SECTION 10-04119-00-BR
SALINE COUNTY
STRUCTURE 083-3242**

ROUTE	SECTION	COUNTY	TOTAL SHEETS	SHEET NO.
TR 272A	10-04119-00-BR	SALINE	12	10
PROJECT NO. BROS-165(35)			CONTRACT NO. 89479	

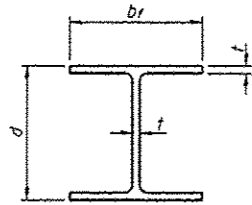


Material: Best quality brass or bronze.
 Border & Lettering: Raised $\frac{1}{8}$ inch. Square cut and not tapered. Top surface polished.
 Fastenings: Four lugs of least three inches long, cast on back of plate.



NAME PLATES
 TOWNSHIP ROUTE 272A (LINDALE ROAD)
 SPOIL BANK DITCH
 SECTION 10-04119-00-BR
 SALINE COUNTY
 STRUCTURE 083-3242

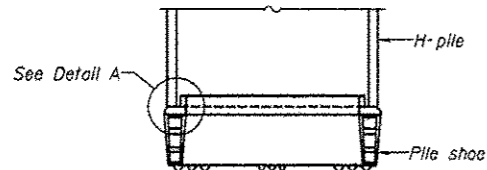
ROUTE	SECTION	COUNTY	TOTAL SHEETS	SHEET NO.
TR 272A	10-04119-00-BR	SALINE	12	11
PROJECT NO. BROS-165(35)			CONTRACT NO. 99479	



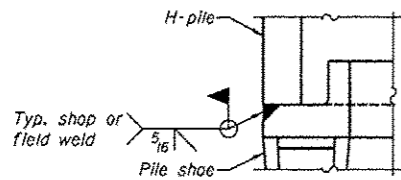
STEEL PILE TABLE

Designation	Depth d	Flange width bf	Web and Flange thickness t	Encasement diameter A	Encasement Quantity/Ft. C.Y.
HP 14x117	14 1/4"	14 7/8"	1 3/8"	30"	0.173
x102	14"	14 3/4"	1 1/8"	30"	0.174
x89	13 7/8"	14 3/4"	5/8"	30"	0.175
x73	13 5/8"	14 5/8"	1/2"	30"	0.176
HP 12x84	12 1/4"	12 1/4"	1 1/8"	24"	0.110
x74	12 1/8"	12 1/4"	5/8"	24"	0.111
x63	12"	12 1/8"	1/2"	24"	0.112
x53	11 3/4"	12"	7/16"	24"	0.112
HP 10x57	10"	10 1/4"	9/16"	24"	0.112
x42	9 3/4"	10 1/8"	7/16"	24"	0.113
HP 8x36	8"	8 1/8"	7/16"	18"	0.063

Note: The steel H-piles shall be according to AASHTO M270 Grade 50.

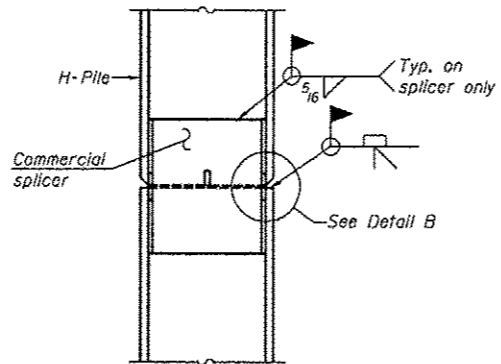


ELEVATION

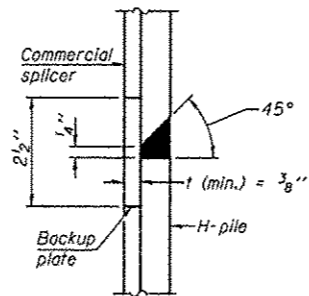


DETAIL A

H-PILE SHOE ATTACHMENT

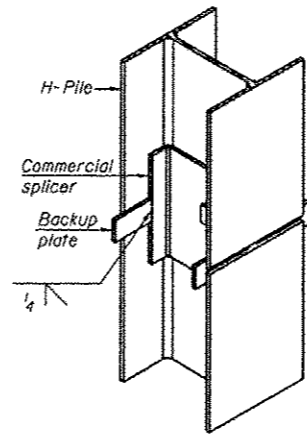


ELEVATION

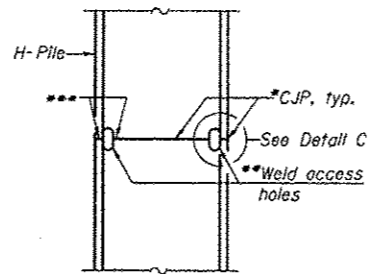


DETAIL "B"

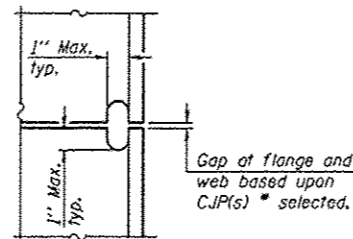
WELDED COMMERCIAL SPLICE



ISOMETRIC VIEW



ELEVATION



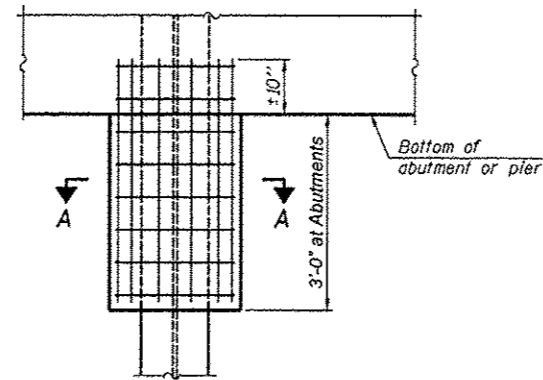
DETAIL C

COMPLETE PENETRATION WELD SPLICE

*Use joint conforming to Figure 3.4 In AWS D1.1, Structure Welding Code - Steel.

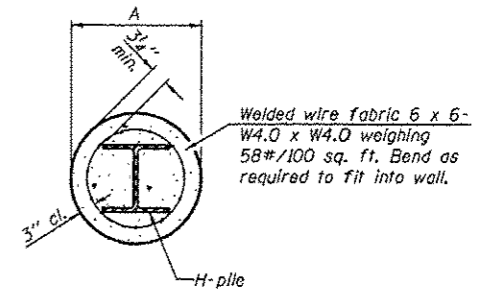
**Preparation per Fig. 5.2 In AWS D1.1, Structure Welding Code - Steel.

***Interrupt welds 1/4" from end of each pile.



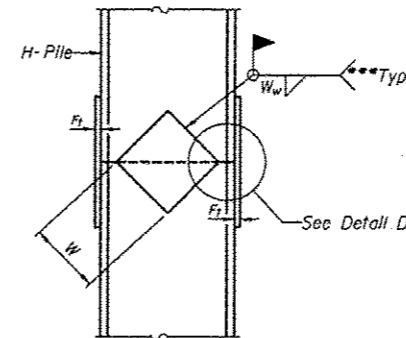
ELEVATION

PILE ENCASEMENT

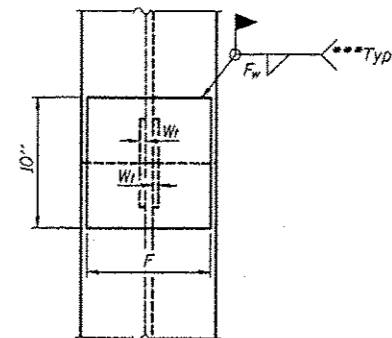


SECTION A-A

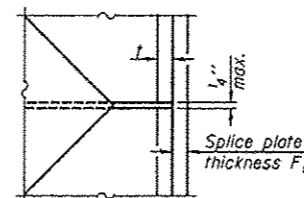
Note: Forms for encasement may be omitted when soil conditions permit.



ELEVATION



END VIEW



DETAIL D

WELDED PLATE FIELD SPLICE

Designation	F	F _t	F _w	W	W _t	W _w
HP 14x117	12 1/2"	1"	7/8"	7 3/4"	5 1/8"	1/2"
x102	12 1/2"	7/8"	3/4"	7 3/4"	5 1/8"	1/2"
x89	12 1/2"	3/4"	1/2"	7 3/4"	5 1/8"	1/2"
x73	12 1/2"	5/8"	9/16"	7 3/4"	5 1/8"	1/2"
HP 12x84	10"	7/8"	1 1/8"	6 1/2"	5 1/8"	1/2"
x74	10"	7/8"	1/2"	6 1/2"	5 1/8"	1/2"
x63	10"	5/8"	1/2"	6 1/2"	1/2"	3/8"
x53	10"	5/8"	1/2"	6 1/2"	1/2"	3/8"
HP 10x57	8"	3/4"	9/16"	5 1/4"	1/2"	3/8"
x42	8"	5/8"	9/16"	5 1/4"	1/2"	3/8"
HP 8x36	7"	5/8"	7/16"	4 1/4"	1/2"	3/8"

PILING DETAILS
 TOWNSHIP ROUTE 272A (LINDALE ROAD)
 SPOIL BANK DITCH
 SECTION 10-04119-00-BR
 SALINE COUNTY
 STRUCTURE 083-3242

ROUTE	SECTION	COUNTY	TOTAL SHEETS	SHEET NO.
TR 272A	10-04119-00-BR	SALINE	12	12
PROJECT NO. BROS-165(35)			CONTRACT NO. 99479	

