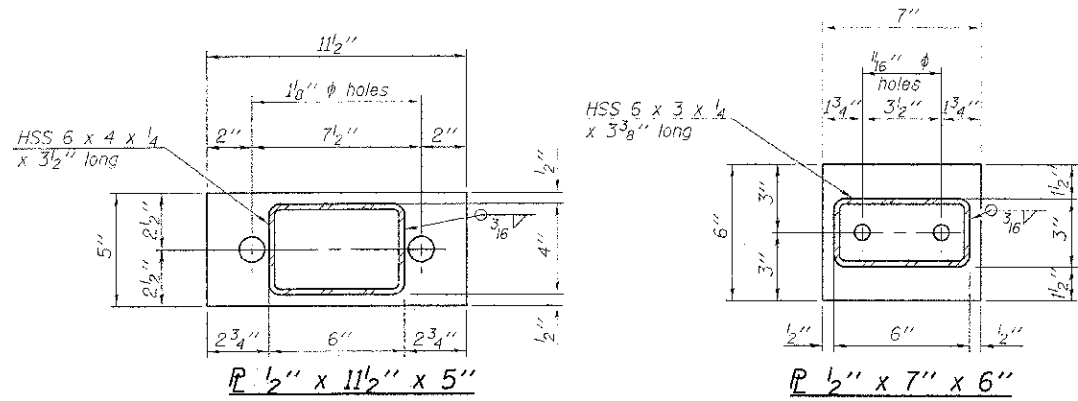
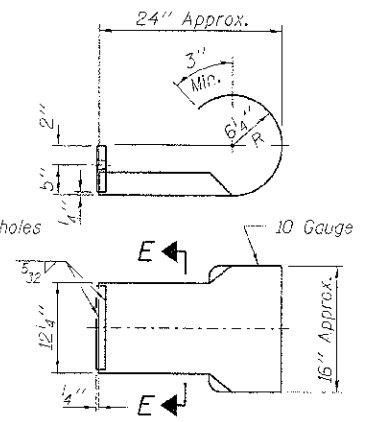
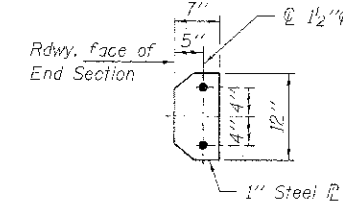


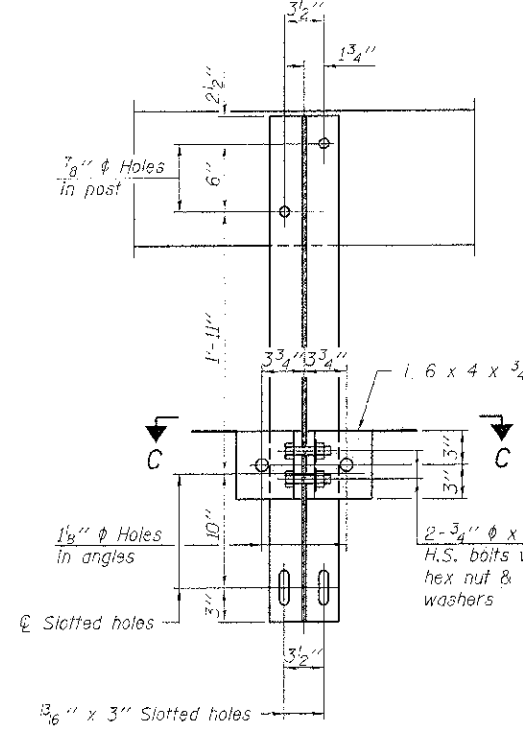
VIEW A-A
ROUND HEAD BOLT



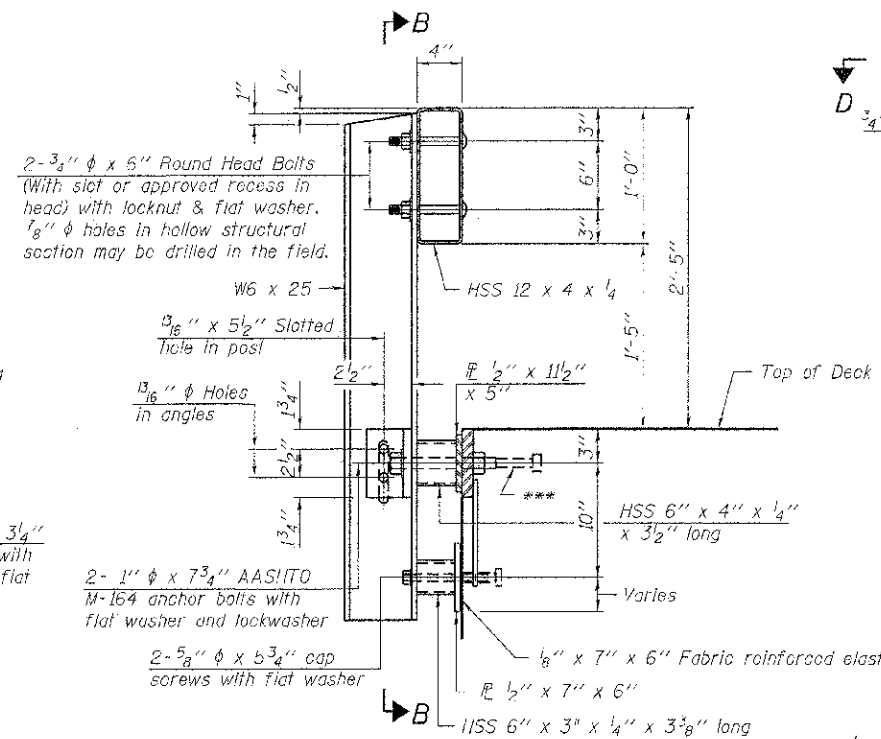
Note: Cost of curled end sections shall be included with the Steel Railing. (4 Required)



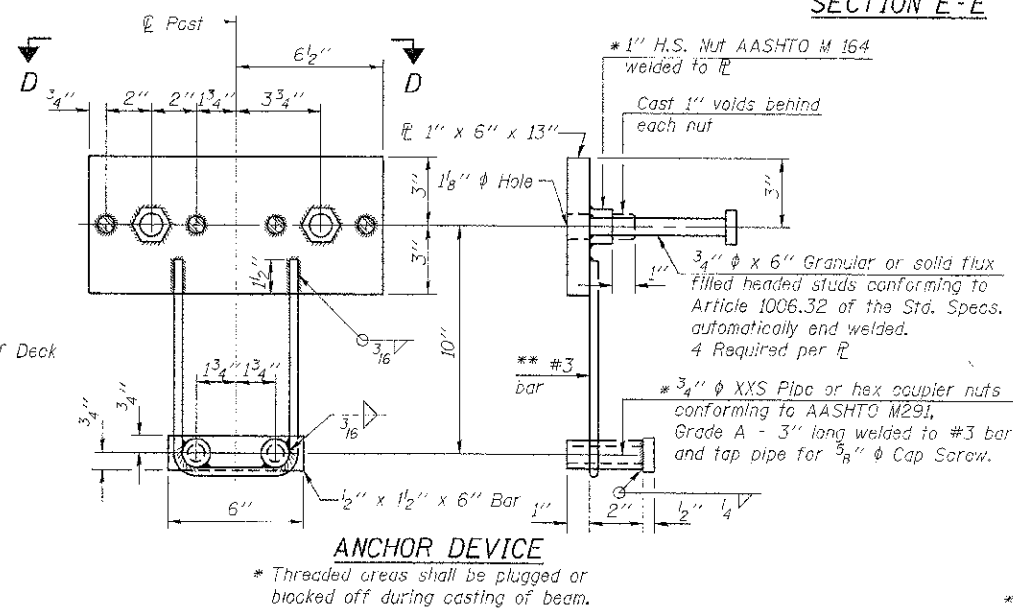
SECTION E-E
CURLED END SECTION DETAILS



SECTION B-B

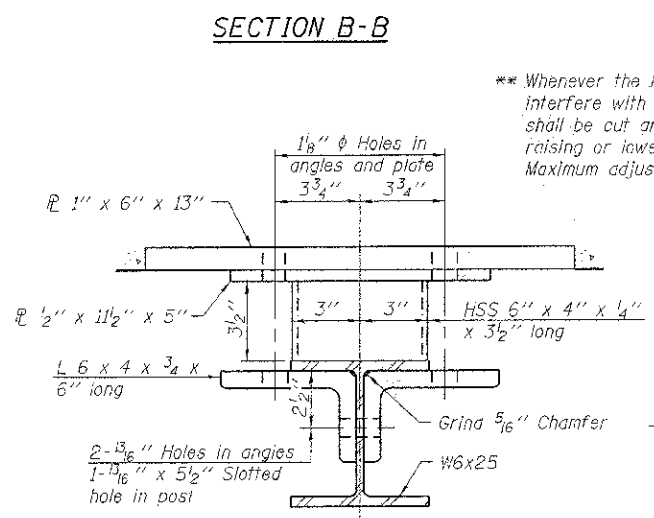


SECTION AT RAILING POST

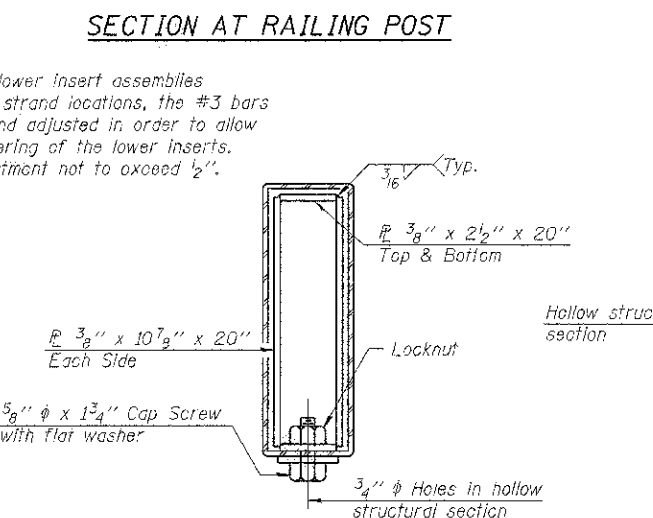


ANCHOR DEVICE

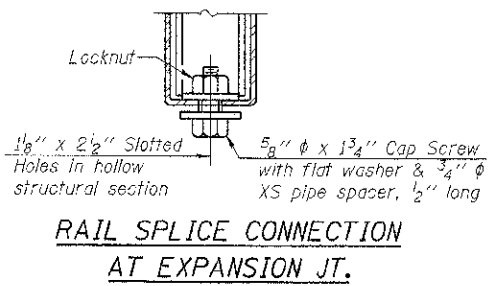
Notes:
All field drilled holes shall be coated with an approved zinc rich paint before erection.
For multi-span bridges, sufficient 1/4 inch x 6 inch x 1'-2 inch galvanized steel shims shall be provided to align rail between adjacent spans. Cost included with Steel Railing, Type S-1.
All steel rail elements shall be galvanized according to Article 509.05 of the Standard Specifications.
*** The studs of the anchor devices shall be placed below the top reinforcement bars and the outermost longitudinal reinforcement bar shall be placed directly above the studs of the rail post anchor device.



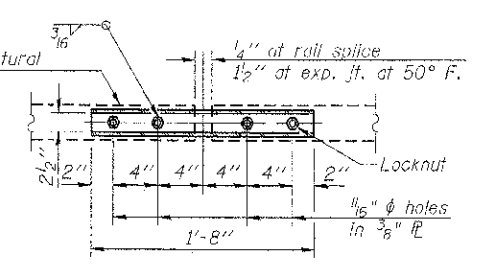
SECTION C-C



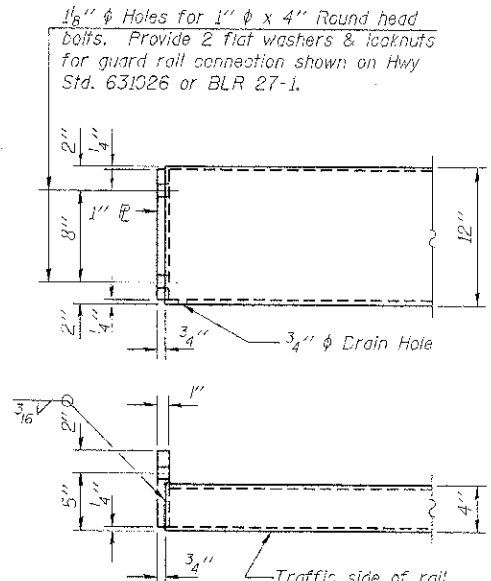
SECTIONS AT RAIL SPLICE



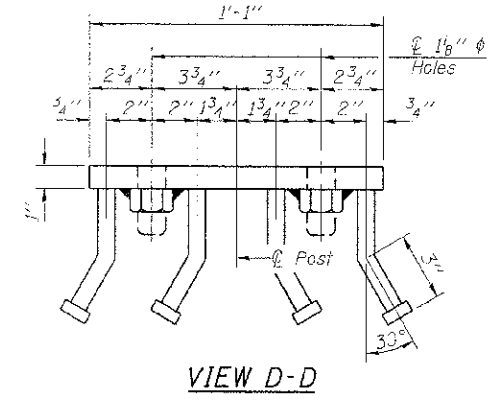
RAIL SPLICE CONNECTION AT EXPANSION JT.



PLAN-BOTT. SPLICE TYPICAL



END OF RAIL DETAILS



VIEW D-D

BILL OF MATERIAL

Item	Unit	Quantity
Steel Railing, Type S-1	Foot	138

R-23A 7-1-10 (10'-9" Maximum Post Spacing)

FILE NAME = 118973-shr-brldge.dgn	USER NAME =	DESIGNED - A.S.L.	REVISED -
HAMPTON LENZING AND RENWICK, INC.		CHECKED - S.W.M.	REVISED -
2008 STEVENSON DRIVE SUITE 201		DRAWN - D.A.B.	REVISED -
SPRINGFIELD, ILLINOIS 62769		CHECKED - S.W.M.	REVISED -
ILLINOIS PROFESSIONAL ENGINEERING BOARD NO. 021-000000			
PLT SCALE =			
PLT DATE = 10/2/2012			

STATE OF ILLINOIS
WHITE COUNTY HIGHWAY DEPARTMENT

STEEL RAILING, TYPE S-1
STRUCTURE NO. 097-3280
SHEET NO. 5 OF 8 SHEETS

C.H.	SECTION	COUNTY	TOTAL SHEETS	SHEET NO.
11	10-00116-CO-BA	WHITE	12	9
CONTRACT NO. 99483				
ILLINOIS FED. AID PROJECT BR05-19(05)9				