

STATE OF ILLINOIS
DEPARTMENT OF TRANSPORTATION

F.A.P. B.T.C.	SECTION	COUNTY	TOTAL SHEETS	SHEET NO.
873	D9 PATCH 2019-1	FRANKLIN	5	1
		ALUMOS	CONTRACT NO 78658	

036

FOR INDEX OF SHEETS, SEE SHEET NO. 3
FOR SUMMARY OF QUANTITIES, SEE SHEET NO. 4

PROPOSED
HIGHWAY PLANS

TRAFFIC DATA - (2017 ADT)
IL 149 - 10900 WITH 15.14% TRUCKS

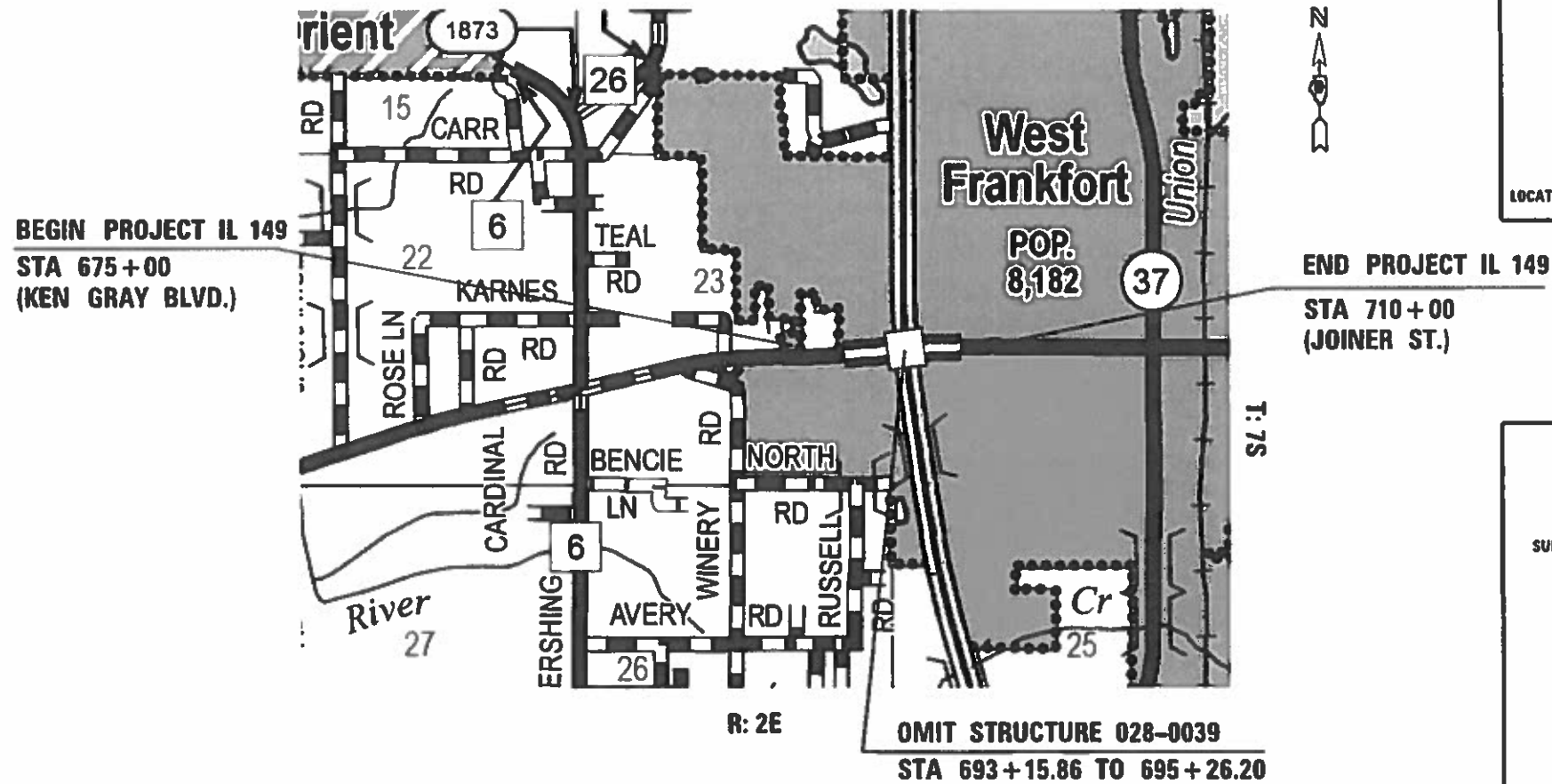
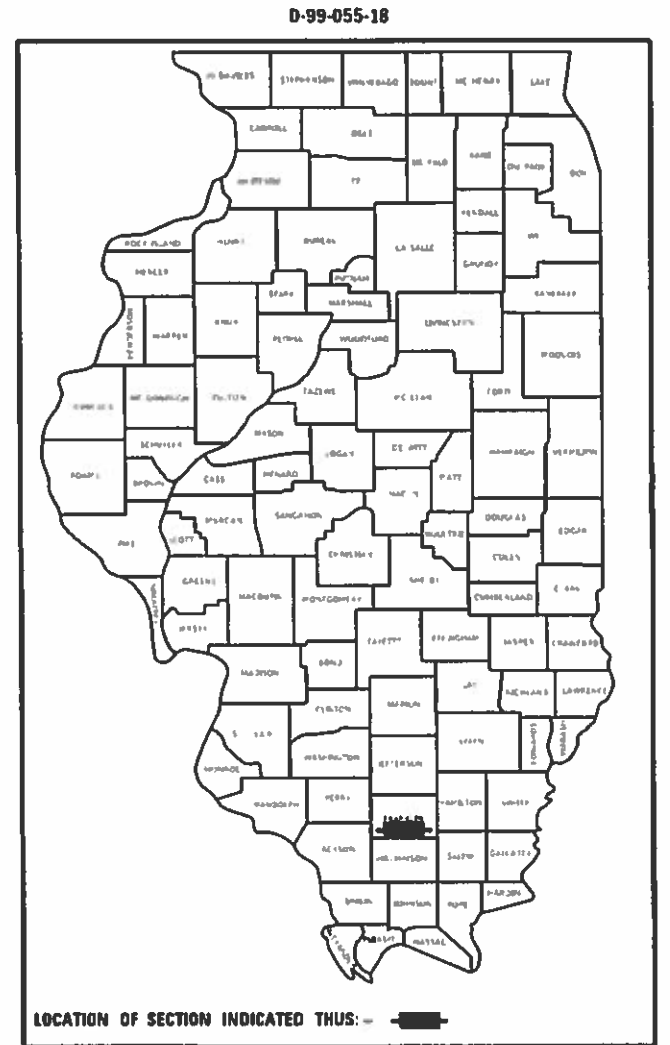
FAP 873 IL 149
SECTION: D9 PATCH 2019-1

TOWNSHIPS
DENNING

PAVEMENT PATCHING
FRANKLIN COUNTY

C-99-086-18

POSTED SPEED
35 MPH



J.U.L.I.E.
JOINT UTILITY LOCATION INFORMATION FOR EXCAVATION
1-800-892-0123
OR 811

PROJECT ENGINEER: SUSAN POE
PROJECT MANAGER: NATHAN TAYLOR

CONTRACT NO. 78658

GROSS LENGTH = 3500 FT. = 0.663 MILE
NET LENGTH = 3500 FT. = 0.663 MILE

STATE OF ILLINOIS
DEPARTMENT OF TRANSPORTATION

SUBMITTED Oct 9 2018

Jeffrey L. Kern
REGIONAL ENGINEER

[Signature]
ENGINEER OF DESIGN AND ENVIRONMENT

[Signature]
DIRECTOR OF HIGHWAYS PROJECT IMPLEMENTATION

PRINTED BY THE AUTHORITY
OF THE STATE OF ILLINOIS

MOTPI: P:\air\... FILE NAME: ...

Reviewed By:

DISTRICT STUDIES & PLANS ENGINEER

Examined By:

Nancy Lee

DISTRICT LAND ACQUISITION ENGINEER

Examined By:

Carrie Nelson

DISTRICT PROGRAM DEVELOPMENT ENGINEER

Examined By:

Kevin Kelly

DISTRICT OPERATIONS ENGINEER

Examined By:

KRS

DISTRICT PROJECT IMPLEMENTATION ENGINEER

Examined By:

Douglas J. Sullivan

DISTRICT CONSTRUCTION ENGINEER

Examined By:

Tom Cooney

DISTRICT MATERIALS ENGINEER

USER NAME = TaylorND	DESIGNED -	REVISED -
	DRAWN -	REVISED -
PLOT SCALE = 100 0000' / in.	CHECKED -	REVISED -
PLOT DATE = 9/4/2018	DATE -	REVISED -

STATE OF ILLINOIS
DEPARTMENT OF TRANSPORTATION

SIGNATURE SHEET

SCALE: SHEET 2 OF 5 SHEETS STA. 675+00 TO STA. 710+00

F.A.P. RTE.	SECTION	COUNTY	TOTAL SHEETS	SHEET NO.
873	D9 PATCH 2019-1	FRANKLIN	5	2
CONTRACT NO. 78658				
ILLINOIS FED. AID PROJECT				

INDEX OF SHEETS

SHEET NO	DESCRIPTION
1	COVER SHEET
2	SIGNATURE SHEET
3	INDEX OF SHEETS, GENERAL NOTES, AND LIST OF STANDARDS
4	SUMMARY OF QUANTITIES
5	HMA PATCH-PARTIAL DEPTH

GENERAL NOTES

QUANTITIES SHOWN IN THE PLANS FOR PATCHING ARE ESTIMATES. THE ACTUAL AMOUNT OF PATCHING REQUIRED WILL BE DETERMINED BY THE ENGINEER.

THERE ARE NO AVAILABLE WASTE SITES ON THE EXISTING RIGHT OF WAY WITHIN THE PROJECT LIMITS. DISPOSAL WILL BE THE RESPONSIBILITY OF THE CONTRACTOR AND WASTE MUST BE DISPOSED OF IN ACCORDANCE WITH ARTICLE 202.03 OF THE STANDARD SPECIFICATIONS.

FACTORS USED FOR ESTIMATING PLAN QUANTITIES ARE AS FOLLOWS AND SHALL NOT BE USED FOR THE BASIS OF FINAL QUANTITIES:

ALL HOT MIX ASPHALT 2.016 TONS/CU.YD.
 ALL AGGREGATE 2.05 TONS/CU.YD.

IN ADDITION TO THE REQUIREMENTS OF ARTICLE 107.16 THE CONTRACTOR SHALL PROTECT THE SURFACE OF ALL BRIDGE DECKS AND BRIDGE APPROACH PAVEMENTS IN A MANNER SATISFACTORY TO THE ENGINEER BEFORE ANY EQUIPMENT IS ALLOWED TO CROSS THE STRUCTURE. PROTECTION SHALL BE PROVIDED FOR ALL EQUIPMENT AS DEFINED IN ARTICLE 101.17 REGARDLESS IF TRACK MOUNTED OR WHEELED.

LIST OF STANDARDS

000001-07	STANDARD, SYMBOLS, ABBREVIATIONS, AND PATTERNS
001006	DECIMAL OF AN INCH AND OF A FOOT
701502-09	URBAN LANE CLOSURE, 2L, 2W, WITH BIDIRECTIONAL LEFT TURN LANE
701601-09	URBAN LANE CLOSURE, MULTILANE, 1W OR 2W WITH NONTRAVERSABLE MEDIAN
701701-10	URBAN LANE CLOSURE, MULTILANE INTERSECTION
701901-08	TRAFFIC CONTROL DEVICES

MIX DESIGN

LOCATIONS	HOT-MIX ASPHALT PARTIAL DEPTH PATCHING
MIXTURE USE(S):	POLYMERIZED HOT-MIX ASPHALT SURFACE COURSE, MIX D, N90
AC/PG:	SBS PG76-22
ABR % (MAX):	SEE SPECIAL PROVISION
DESIGN AIR VOIDS:	4.0 %, 90 GYRATION DESIGN
MIXTURE COMPOSITION: (GRADATION MIXTURE)	IL-9.5mm
FRICTION AGGREGATE:	D SURFACE
MIXTURE WEIGHT	112 LBS/SQ. YD/IN
QUALITY MANAGEMENT PROGRAM	QC/QA
SUBLOT SIZE:	NA

MOF: D:\aut\...
 FILE NAME: ...

USER NAME = TaylorND	DESIGNED -	REVISED -
PLOT SCALE = 100 0000 1/16"	DRAWN -	REVISED -
PLOT DATE = 10/10/2018	CHECKED -	REVISED -
	DATE -	REVISED -

**STATE OF ILLINOIS
DEPARTMENT OF TRANSPORTATION**

INDEX OF SHEETS, GENERAL NOTES, AND LIST OF STANDARDS

SCALE: SHEET 3 OF 5 SHEETS STA. 675+00 TO STA. 710+00

F.A.P. RATE	SECTION	COUNTY	TOTAL SHEETS	SHEET NO.
873	D9 PATCH 2019-1	FRANKLIN	5	3
CONTRACT NO. 78658			ILLINOIS FED. AID PROJECT	

SUMMARY OF QUANTITIES

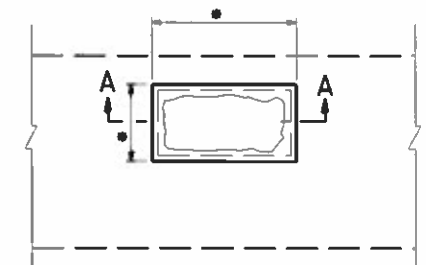
COUNTY:	FRANKLIN CO
ROUTE:	IL 149
FUNDING:	100% STATE
LOCATION:	URBAN
	ROADWAY
	0005

CODE NUMBER	ITEM DESCRIPTION	UNIT	
40600290	BITUMINOUS MATERIALS (TACK COAT)	POUND	818
67100100	MOBILIZATION	L SUM	1
70102622	TRAFFIC CONTROL AND PROTECTION, STANDARD 701502	L SUM	1
70102630	TRAFFIC CONTROL AND PROTECTION, STANDARD 701601	L SUM	1
70102635	TRAFFIC CONTROL AND PROTECTION, STANDARD 701701	L SUM	1
X4406020	PARTIAL DEPTH REMOVAL, TYPE I, 2"	SQ YD	1,453
X4406220	PARTIAL DEPTH REMOVAL, TYPE II, 2"	SQ YD	363
X4421000	PARTIAL DEPTH PATCHING	TON	203
70107025	CHANGEABLE MESSAGE SIGN	CAL DA	88

MODPL1: D:\cours...
 FILE NAME: ...
 ...

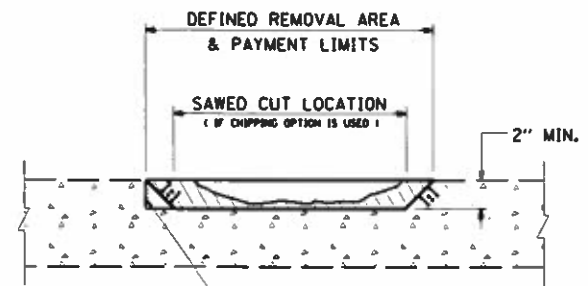
MODEL: D:\draft
 FILE NAME: p:\ILLINOIS\BRIDGE\I11000\DOT\Documents\I11000\91\Project\178658\CAD\Sheet\0978658-Sheets.dgn

DETAILS OF HOT-MIX ASPHALT PATCHING-PARTIAL DEPTH



PLAN

• LIMITS OF PARTIAL DEPTH PATCHING AS DIRECTED BY THE ENGINEER.



SECTION A-A

NOTES:

THE DIAMETER OF THE MILLING MACHINE SHALL BE OF SUFFICIENT SIZE TO MAINTAIN THE 1:1 SIDE SLOPE.

THIS ITEM WILL BE PAID FOR AT THE CONTRACT UNIT PRICE PER SQUARE YARD FOR **PARTIAL DEPTH REMOVAL** OF THE TYPE AND DEPTH SPECIFIED; AND THE CONTRACT UNIT PRICE PER TON FOR **PARTIAL DEPTH PATCHING** SAW CUTS TO BE INCLUDED IN THE COST OF PARTIAL DEPTH PATCH REMOVAL

REVISIONS	
DRAWN	10-4-91
REVISED	01-11-07
REVISED	3-26-08
REVISED	

STD. 9-91

USER NAME = TAYLORND	DESIGNED -	REVISED -
PLOT SCALE = 100 0000 / 1"	DRAWN -	REVISED -
PLOT DATE = 6/14/2018	CHECKED -	REVISED -
	DATE -	REVISED -

STATE OF ILLINOIS
 DEPARTMENT OF TRANSPORTATION

HMA PATCH-PARTIAL DEPTH DETAIL	
SCALE:	SHEET 5 OF 5 SHEETS STA. 675+00 TO STA. 710+00

F.A.P. RTE.	SECTION	COUNTY	TOTAL SHEETS	SHEET NO.
873	D9 PATCH 2019-1	FRANKLIN	5	5
CONTRACT NO. 78658			ILLINOIS FED. AID PROJECT	