

STATE OF ILLINOIS
DEPARTMENT OF TRANSPORTATION

FAU	SECTION	COUNTY	TOTAL SHEETS	SHEET NO.
6757	105-BLP	TAZEWELL	11	1
ILLINOIS CONTRACT NO. 68E76				

INDEX OF SHEETS

1. COVER SHEET
2. GENERAL NOTES & STATUS OF UTILITIES
3. LINE DIAGRAM
- 4-5. SUMMARY OF QUANTITIES
6. SCHEDULE OF QUANTITIES
7. TYPICAL SECTION
8. REMOVAL PLAN
9. PROPOSED PLAN
10. PROPOSED GUARDRAIL
11. CADD STANDARDS

PROPOSED HIGHWAY PLANS

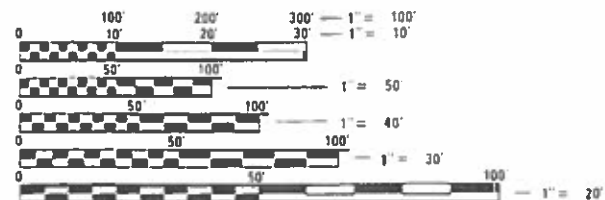
FAU ROUTE 6757 (US 150)
SECTION 105-BLP
PROJECT
CONTRACT MAINTENANCE
TAZEWELL COUNTY
C-94-015-19

HIGHWAY STANDARDS

606001-07	701301-04
630001-12	701901-08
630116	720011-01
630301-09	729001-01
635001-02	782006
701201-05	

DESIGN DESIGNATION (US 150)

MINOR ARTERIAL
2017 ADT = 5450
2017 MU = 70
2017 SU = 475

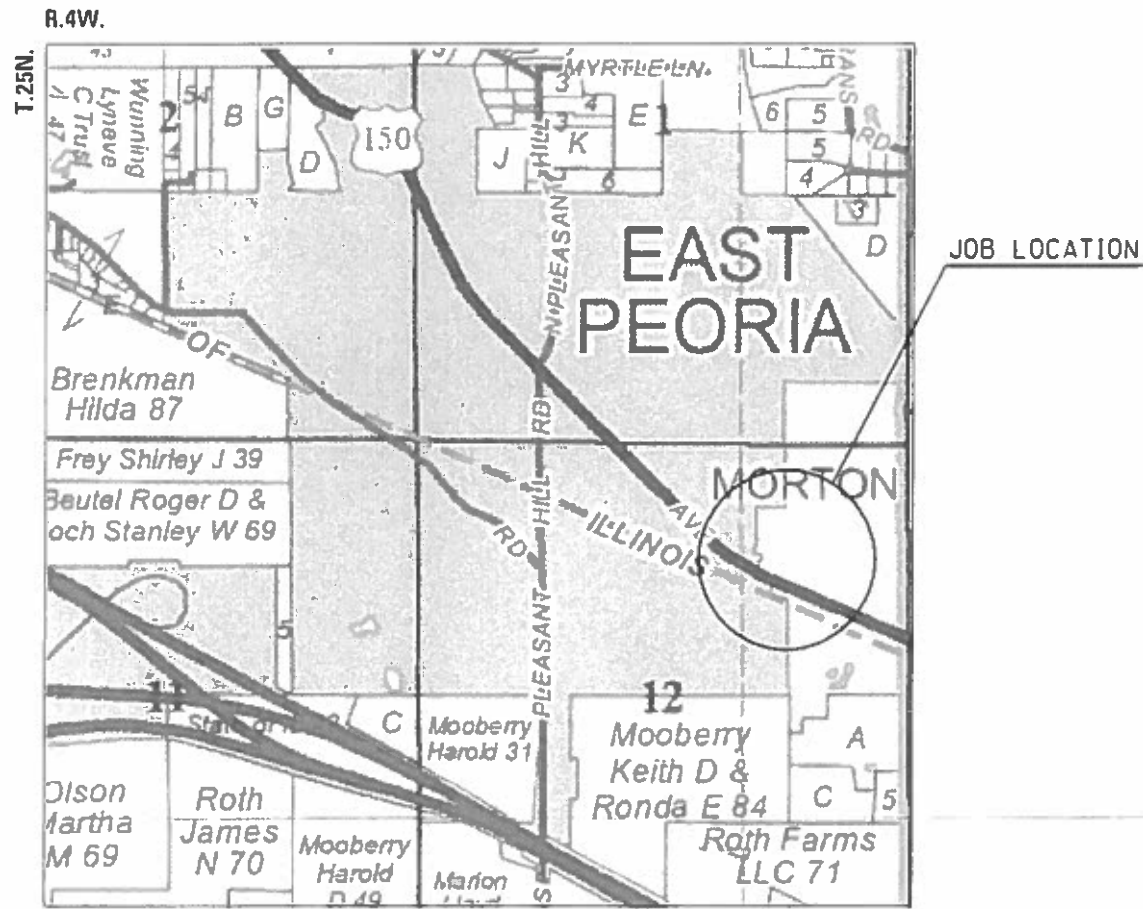


FULL SIZE PLANS HAVE BEEN PREPARED USING STANDARD ENGINEERING SCALES. REDUCED SIZED PLANS WILL NOT CONFORM TO STANDARD SCALES IN MAKING MEASUREMENTS ON REDUCED PLANS, THE ABOVE SCALES MAY BE USED.

J.U.L.I.E.
JOINT UTILITY LOCATION INFORMATION FOR EXCAVATION
1-800-892-0123
OR 811

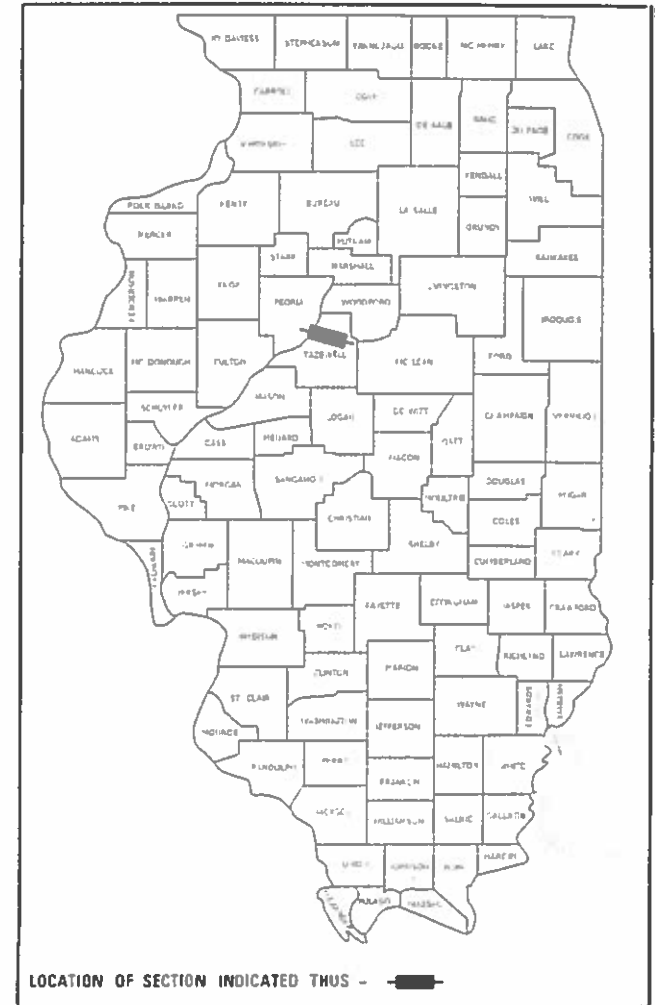
PROJECT ENGINEER: RICH DOTSON (309)671-3455
PROJECT MANAGER: RON NOLTE (309)671-3470

CATALOG NO. 035675-00D
CONTRACT NO. 68E76



GROSS LENGTH = 770 FT. = 0.15 MILE
NET LENGTH = 770 FT. = 0.15 MILE

D-94-012-19



DESCRIPTION:

THIS PROJECT CONSISTS OF GUARDRAIL INSTALLATION, GUARDRAIL REMOVAL, INLET ADJUSTMENTS, MISCELLANEOUS CONCRETE WORK, AND ANY OTHER COLLATERAL WORK NEEDED TO COMPLETE THIS PROJECT.

STATE OF ILLINOIS
DEPARTMENT OF TRANSPORTATION

SUBMITTED 10/26/2018
K.R.A. & J.T.
REGION THREE ENGINEER

Dec 7 2018
E.A. Etkin
ENGINEER OF DESIGN AND ENVIRONMENT

Dec 7 2018
Paul J. Chaffin
DIRECTOR OF HIGHWAYS PROJECT IMPLEMENTATION

PRINTED BY THE AUTHORITY
OF THE STATE OF ILLINOIS

COMMITMENTS

There are no commitments with this contract.

Commitments are not to be altered without the written approval of all parties to which the commitment was made.

STATUS OF UTILITIES

US 150-W. JACKSON AVE.						
COMPANY	CONTACT	TYPE OF UTILITY	STATION AND OFFSET	MIN DEPTH	TYPE OF CONFLICT	DISPOSTION
AMEREN GAS	KENT KOWALSKIE 8420 N. UNIVERSITY PEORIA, IL 61615 309-693-4839	GAS LINE	LT. STA. 251+25 TO 257+50 18' TO 24' LEFT	30"	PROPOSED GUARDRAIL	CONFLICT
VILLAGE OF MORTON	CRAIG LOUDERMILK 120 N. MAIN ST. MORTON, IL 61550 309-266-5361	WATER	LT. STA. 251+25 TO 257+50 18' TO 24' LEFT	36"	PROPOSED GUARDRAIL	CAUTION
*AT&T	KEN COLWELL 222 W. JACKSON WOODSTOCK, IL 60098 630-383-9249	DUCT BANK	RT. STA. 253+85 TO 258+50 17' TO 20' RIGHT	36"	PROPOSED GUARDRAIL	CAUTION

* A REPRESENTATIVE SHALL BE REQUIRED TO BE ON SITE PRIOR TO INSTALLING GUARD RAIL IN THE VICINITY OF THEIR DUCT BANK AND VAULT

AVAILABILITY OF ELECTRONIC FILES

MicroStation and GEOPAK files of this project will be made available to the Contractor after contract award. If there is a conflict between the electronic files and the printed contract plans and documents, the printed contract plans and documents shall take precedence over the electronic files. The Contractor shall accept all risk associated with using the electronic files and shall hold the Department harmless for any errors or omissions in the electronic files and the data contained therein. Errors or delays resulting from the use of the electronic files by the Contractor shall not result in an extension of time for any interim or final completion date or shall not be considered cause for additional compensation. The Contractor shall not use, share, or distribute these electronic files except for the purpose of constructing this contract. Any claims by third parties due to use or errors shall be the responsibility of the Contractor. The Contractor shall include this disclaimer with the transfer of these electronic files to any other parties and shall include appropriate language binding them to similar responsibilities.

MODEL: \\MODELNAME\$
FILE NAME: \$FILE\$

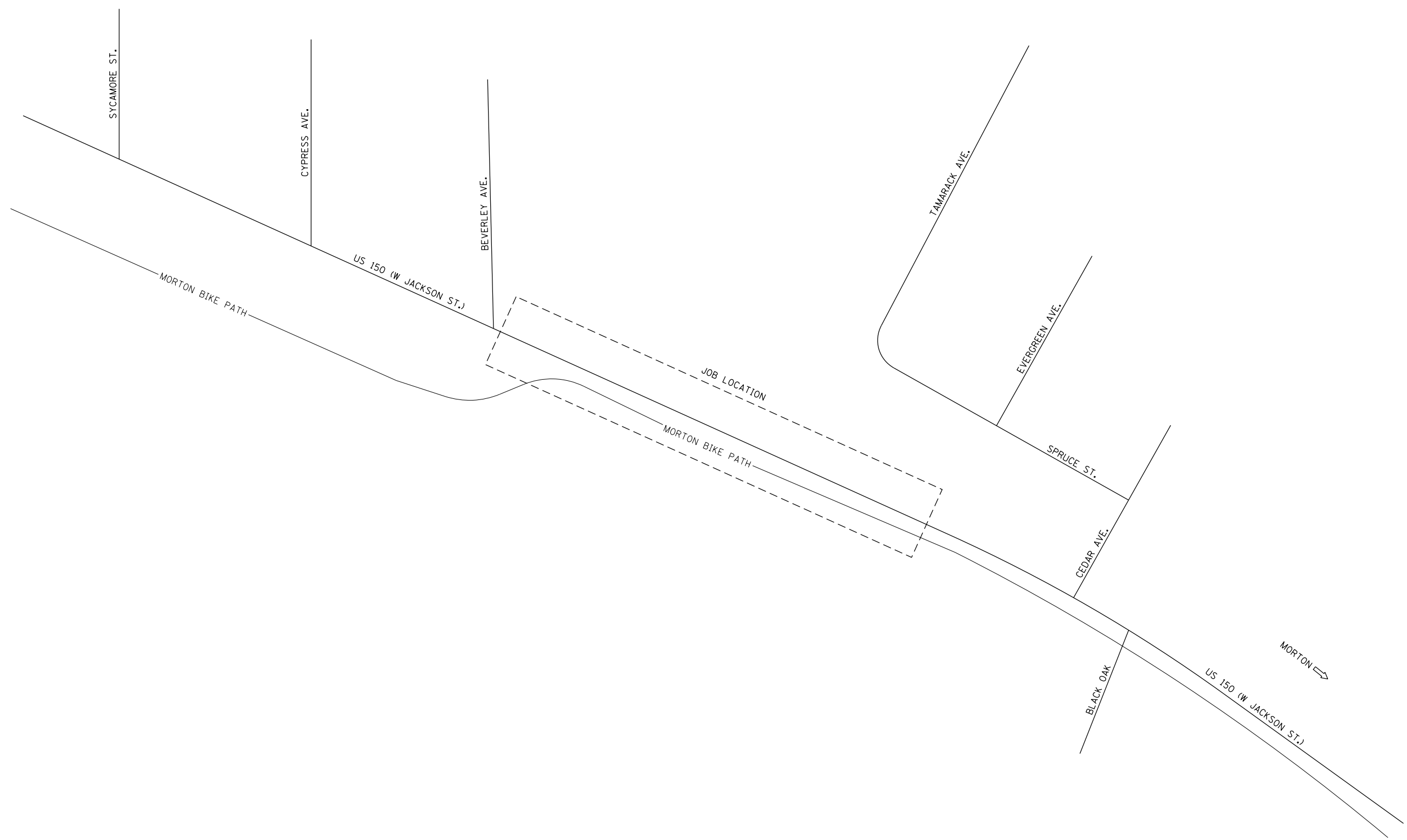
USER NAME = \$USERS	DESIGNED -	REVISED -
	DRAWN -	REVISED -
PLOT SCALE = \$SCALE\$	CHECKED -	REVISED -
PLOT DATE = \$DATE\$	DATE -	REVISED -

**STATE OF ILLINOIS
DEPARTMENT OF TRANSPORTATION**

**GENERAL NOTES,
& STATUS OF UTILITIES**

SCALE: SHEET OF SHEETS STA. TO STA.

F.A.U. RTE.	SECTION	COUNTY	TOTAL SHEETS	SHEET NO.
6757	105-BLP	TAZEWELL	11	2
CONTRACT NO. 68E76				
ILLINOIS			FED. AID PROJECT	



MODEL: \\MODELS\MAMES
FILE: \\MAMES: 371213

USER NAME = \$USERS	DESIGNED -	REVISED -
	DRAWN -	REVISED -
PLOT SCALE = \$SCALE\$	CHECKED -	REVISED -
PLOT DATE = \$DATE\$	DATE -	REVISED -

**STATE OF ILLINOIS
DEPARTMENT OF TRANSPORTATION**

LINE DIAGRAM

SCALE: SHEET OF SHEETS STA. TO STA.

F.A.U. RTE. 6757	SECTION 105-BLP	COUNTY TAZEWELL	TOTAL SHEETS 11	SHEET NO. 3
ILLINOIS FED. AID PROJECT			CONTRACT NO. 68E76	

CODE NO.	ITEM	UNIT	TOTAL QUANTITY	CONSTRUCTION CODE	
				URBAN	0021 SAFETY 100% STATE
550A0070	STORM SEWERS, CLASS A, TYPE 1 15"	FOOT	33	33	
55100500	STORM SEWER REMOVAL 12"	FOOT	33	33	
60603800	COMBINATION CONCRETE CURB AND GUTTER, TYPE B-6.12	FOOT	31	31	
* 63000001	STEEL PLATE BEAM GUARD RAIL, TYPE A, 6 FOOT POSTS	FOOT	378.1	378.1	
* 63000003	STEEL PLATE BEAM GUARD RAIL, TYPE A, 9 FOOT POSTS	FOOT	394	394	
* 63000007	STEEL PLATE BEAM GUARD RAIL, TYPE B, 6 FOOT POSTS	FOOT	334.4	334.4	
63000035	BACK SIDE PROTECTION OF GUARDRAIL	FOOT	334.4	334.4	
* 63100167	TRAFFIC BARRIER TERMINAL, TYPE 1 (SPECIAL) TANGENT	EACH	3	3	
* 63100169	TRAFFIC BARRIER TERMINAL, TYPE 1 (SPECIAL) FLARED	EACH	1	1	
67100100	MOBILIZATION	L SUM	1	1	
70100450	TRAFFIC CONTROL AND PROTECTION, STANDARD 701201	L SUM	1	1	
70107025	CHANGEABLE MESSAGE SIGN	CAL DA	70	70	
* 72000100	SIGN PANEL - TYPE 1	SQ FT	4.5	4.5	
* 72501000	TERMINAL MARKER - DIRECT APPLIED	EACH	4	4	

*= SPECIALTY ITEM

MODEL: #MODELNAME\$
FILE NAME: \$FILE\$

USER NAME = \$USER\$	DESIGNED -	REVISED -
	DRAWN -	REVISED -
PLOT SCALE = \$SCALE\$	CHECKED -	REVISED -
PLOT DATE = \$DATE\$	DATE -	REVISED -

**STATE OF ILLINOIS
DEPARTMENT OF TRANSPORTATION**

SUMMARY OF QUANTITIES

F.A.U. RTE.	SECTION	COUNTY	TOTAL SHEETS	SHEET NO.
6757	105-BLP	TAZEWELL	11	4
CONTRACT NO. 68E76				

ILLINOIS FED. AID PROJECT

CODE NO.	ITEM	UNIT	TOTAL QUANTITY	CONSTRUCTION CODE	
				URBAN	0021
					SAFETY
				100% STATE	
72900200	METAL POST - TYPE B	FOOT	22	22	
* 78200005	GUARDRAIL REFLECTORS, TYPE A	EACH	17	17	
X4240420	PORTLAND CEMENT CONCRETE SIDEWALK 4 INCH, SPECIAL	SQ FT	415.3	415.3	
X4404400	PAVEMENT REMOVAL (SPECIAL)	SQ YD	29	29	
X6024503	INLETS TO BE ADJUSTED WITH NEW FRAME AND GRATE (SPECIAL)	EACH	3	3	
X6320100	GUARDRAIL REMOVAL SPECIAL	FOOT	358	358	
X6331007	REMOVAL AND REPLACEMENT OF STEEL PLATE BEAM GUARDRAIL, RAIL ELEMENT	FOOT	262.5	262.5	
* Z0024475	TUBULAR MARKER	EACH	64	64	

*= SPECIALTY ITEM

MODEL: #MODEL NAME*
FILE NAME: #FILE#

USER NAME = #USER*	DESIGNED -	REVISED -
	DRAWN -	REVISED -
PLOT SCALE = #SCALE*	CHECKED -	REVISED -
PLOT DATE = #DATE*	DATE -	REVISED -

**STATE OF ILLINOIS
DEPARTMENT OF TRANSPORTATION**

SUMMARY OF QUANTITIES

F.A.U. RTE.	SECTION	COUNTY	TOTAL SHEETS	SHEET NO.
6757	105-BLP	TAEWELL	11	5
CONTRACT NO. 68E76				

ILLINOIS FED. AID PROJECT

LOCATION				PAVEMENT REMOVAL, SPECIAL	PCC SIDEWALK 4 INCH, SPECIAL	COMBINATION CURB AND GUTTER, TYPE B-6.12	INLETS TO BE ADJUSTED WITH NEW FRAME AND GRATE (SPECIAL)	STORM SEWERS, CLASS A, TYPE 1 15"	STORM SEWER REMOVAL 12"
				SQ. YD.	SQ. FT.	FOOT	EACH	FOOT	FOOT
SOUTH SIDE									
STA.	253+87.0	TO	254+31.0		215.0				
STA.	254+96.7	TO	255+04.7	4.3	38.58				
STA.	255+04.7	TO	255+09.7	0.8			1.0		
STA.	255+08.7	TO	255+41.7	17.3	109.3	31.0		33.0	33.0
STA.	255+40.7	TO	255+49.2	1.4			2.0		
STA.	255+49.2	TO	255+59.2	5.6	52.4				
TOTAL				29	415	31	3	33	33

LOCATION				GUARDRAIL REMOVAL SPECIAL
				FOOT
SOUTH SIDE				
STA.	251+21.6	TO	254+36.0	314.4
STA.	256+98.5	TO	257+42.2	43.7
TOTAL				358

LOCATION				TUBULAR MARKER
				EACH
SOUTH SIDE				
STA.	253+92.0	TO	254+31.0	33.0
STA.	257+03.0	TO	257+37.0	31.0
TOTAL				64

LOCATION		SIGN PANEL - TYPE I	METAL POST - TYPE B
		SQ. FT.	FOOT
SOUTH SIDE			
STA.	253+00.0	2.25	11
STA.	257+85.0	2.25	11
TOTAL		4.5	22

LOCATION	MOBILIZATION	TRAFFIC CONTROL AND PROTECTION, STANDARD 701201	CHANGEABLE MESSAGE SIGN*
	LSUM	LSUM	CAL DAY
JOBSITE	1.0	1.0	70.0
TOTAL	1.0	1.0	70.0

* 2 SIGNS @ 35 DAYS EACH

LOCATION				STEEL PLATE BEAM GUARDRAIL, TYPE A 6 FOOT POSTS	STEEL PLATE BEAM GUARDRAIL, TYPE B 6 FOOT POSTS	STEEL PLATE BEAM GUARDRAIL, TYPE A 9 FOOT POSTS	BACK SIDE PROTECTION OF GUARDRAIL	TRAFFIC BARRIER TERMINAL, TYPE 1 (SPECIAL) TANGENT	TRAFFIC BARRIER TERMINAL, TYPE 1 (SPECIAL) FLARED	GUARDRAIL REFLECTORS, TYPE A	TERMINAL MARKER-DIRECT APPLIED	REMOVAL AND REPLACEMENT OF STEEL PLATE BEAM GUARDRAIL, RAIL ELEMENT
				FOOT	FOOT	FOOT	FOOT	EACH	EACH	EACH	EACH	FOOT
NORTH SIDE												
STA.	251+94.1	TO	252+31.6						1.0	0.0	1.0	
STA.	252+31.6	TO	256+25.4			393.80				5.0	0.0	189.4
STA.	256+25.4	TO	256+75.4	50.00						1.0	0.0	73.1
STA.	256+75.4	TO	257+25.4					1.0		1.0	1.0	
SOUTH SIDE												
STA.	250+78.5	TO	251+34.7					1.0		1.0	1.0	
STA.	251+34.7	TO	254+06.6	271.90						3.0	0.0	
STA.	254+06.6	TO	257+41.0		334.40		334.4			4.0	0.0	
STA.	257+41.0	TO	257+97.2	56.20						1.0	0.0	
STA.	257+97.2	TO	258+47.2					1.0		1.0	1.0	
TOTAL				378.1	334.4	394	334.4	3	1	17	4	262.5

MODEL: S:\06\BELMARES
FILE NAME: FILES

USER NAME = SUSERS	DESIGNED -	REVISED -
	DRAWN -	REVISED -
PLOT SCALE = SCALES	CHECKED -	REVISED -
PLOT DATE = SDATES	DATE -	REVISED -

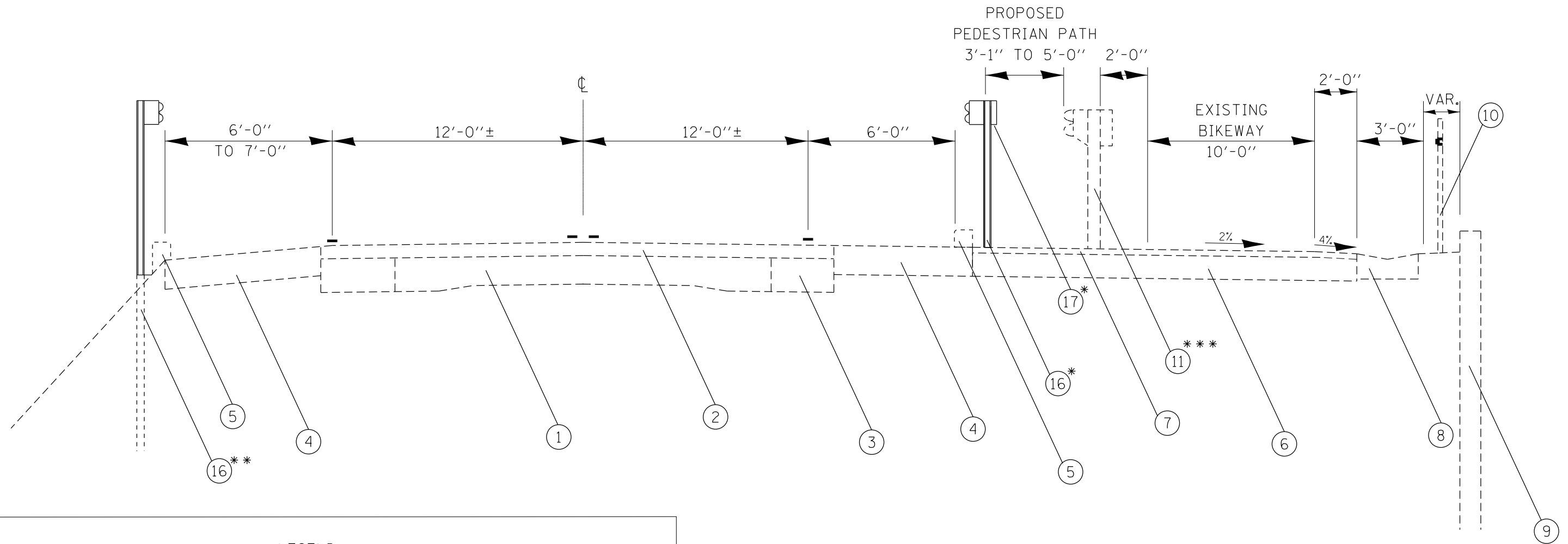
**STATE OF ILLINOIS
DEPARTMENT OF TRANSPORTATION**

SCHEDULE OF QUANTITIES

SCALE: SHEET OF SHEETS STA. TO STA.

F.A.U. RTE.	SECTION	COUNTY	TOTAL SHEETS	SHEET NO.
6757	105-BLP	TAZEWELL	11	6
CONTRACT NO. 68E76				
ILLINOIS		FED. AID PROJECT		

US 150- W. JACKSON ST.



LEGEND

EXISTING ITEMS

PROPOSED ITEMS

- 1 - PCC PAVEMENT
- 2 - 3"± HMA OVERLAYS
- 3 - 9" - HMA WIDENING
- 4 - 8" HMA SHOULDER
- 5 - HMA CURB
- 6 - 6" TO 8" AGG BASE COURSE
- 7 - 2" CONC. SURFACE COURSE
- 8 - TYPE A GUTTER
- 9 - SHEET PILE RETAINING WALL
- 10 - CHAIN LENGTH FENCE
- 11 - EXISTING GUARDRAIL

- 16 - STEEL PLATE BEAM GUARDRAIL, TYPE A
- 17 - BACKSIDE PROTECTION

- * TYPE B - RT STA. 254+06.6 TO RT STA. 257+41.0
- ** 9' POSTS - LT STA 252+31.6 TO LT STA. 256+25.4
- *** REMOVE BLOCKS & REINSTALL RAIL- RT. STA. 254+36 TO RT. STA. 256+98.5

NOT TO SCALE

MODEL: 140DELMAMES
FILE NAME: 31115

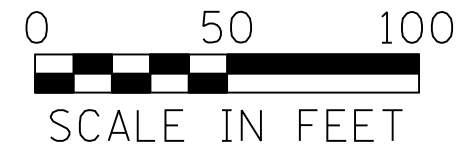
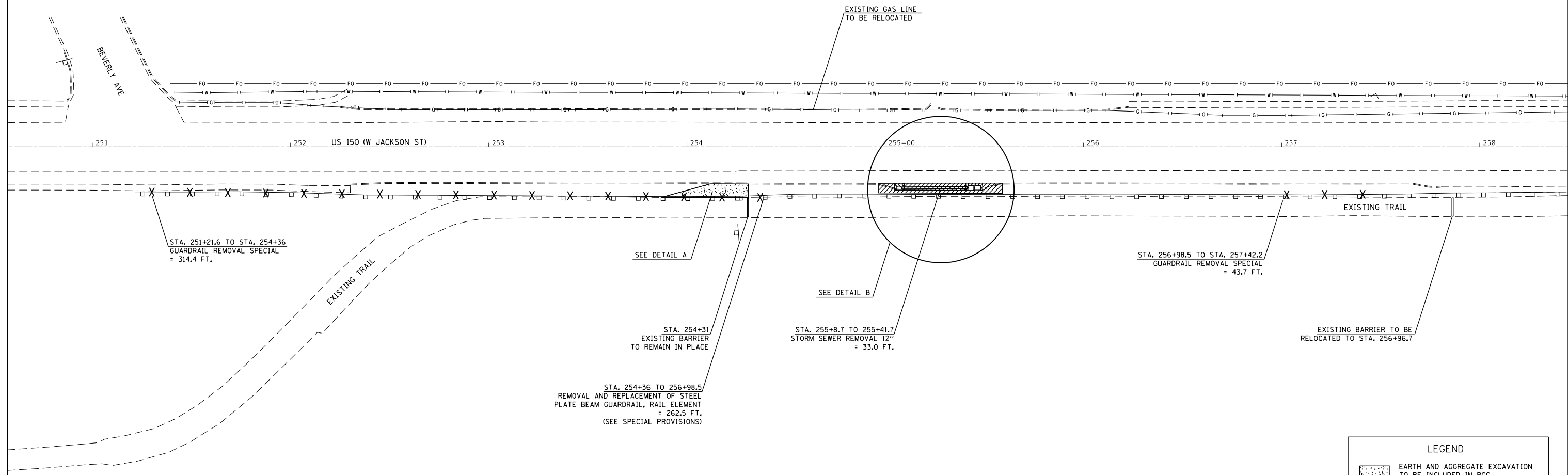
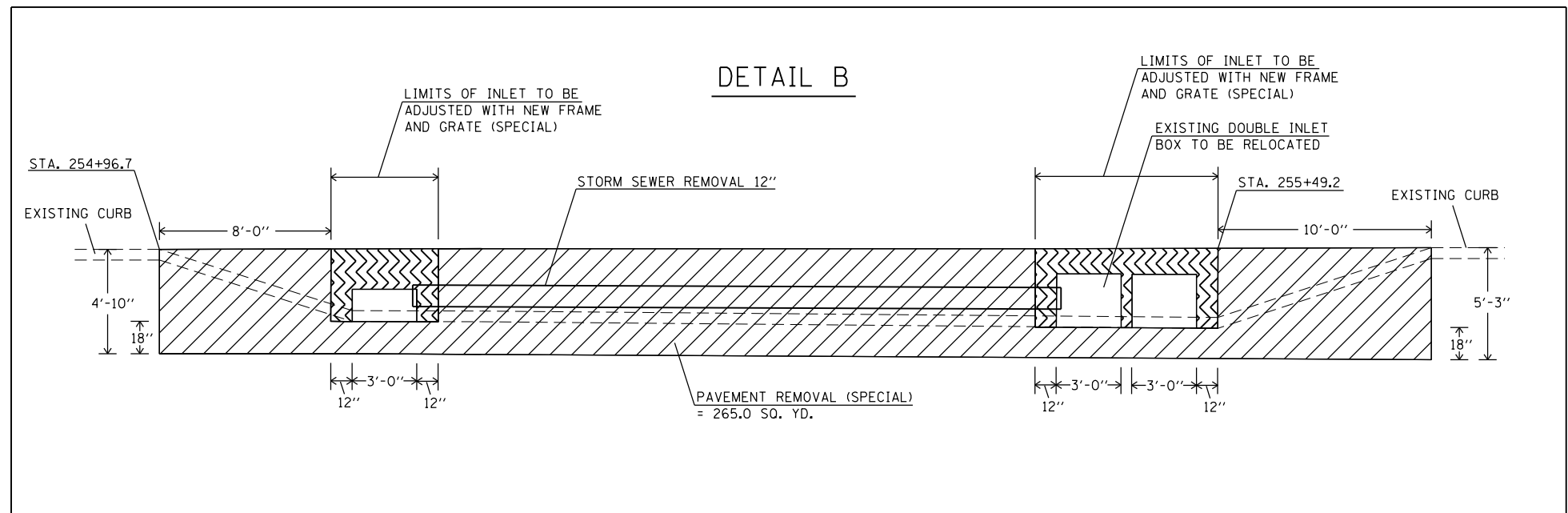
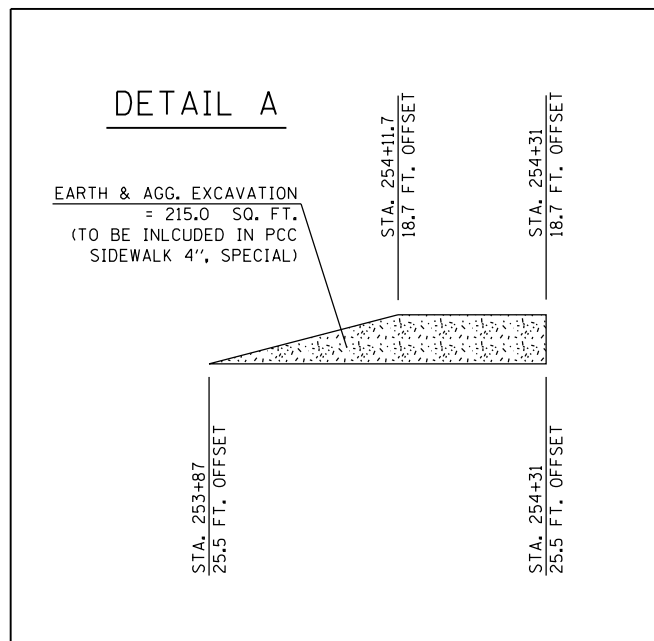
USER NAME = \$USERS	DESIGNED -	REVISED -
	DRAWN -	REVISED -
PLOT SCALE = \$\$SCALE\$	CHECKED -	REVISED -
PLOT DATE = \$DATE\$	DATE -	REVISED -

**STATE OF ILLINOIS
DEPARTMENT OF TRANSPORTATION**

TYPICAL SECTION

SCALE: SHEET OF SHEETS STA. TO STA.

F.A.U. RTE.	SECTION	COUNTY	TOTAL SHEETS	SHEET NO.
6757	105-BLP	TAZEWELL	11	7
CONTRACT NO. 68E76				
ILLINOIS FED. AID PROJECT				



LEGEND	
	EARTH AND AGGREGATE EXCAVATION TO BE INCLUDED IN PCC SIDEWALK 4", SPECIAL
	PAVEMENT REMOVAL (SPECIAL)
	PAVEMENT REMOVAL TO BE INCLUDED WITH INLET TO BE ADJUSTED WITH NEW FRAME AND GRATE (SPECIAL)
X X	GUARDRAIL REMOVAL SPECIAL

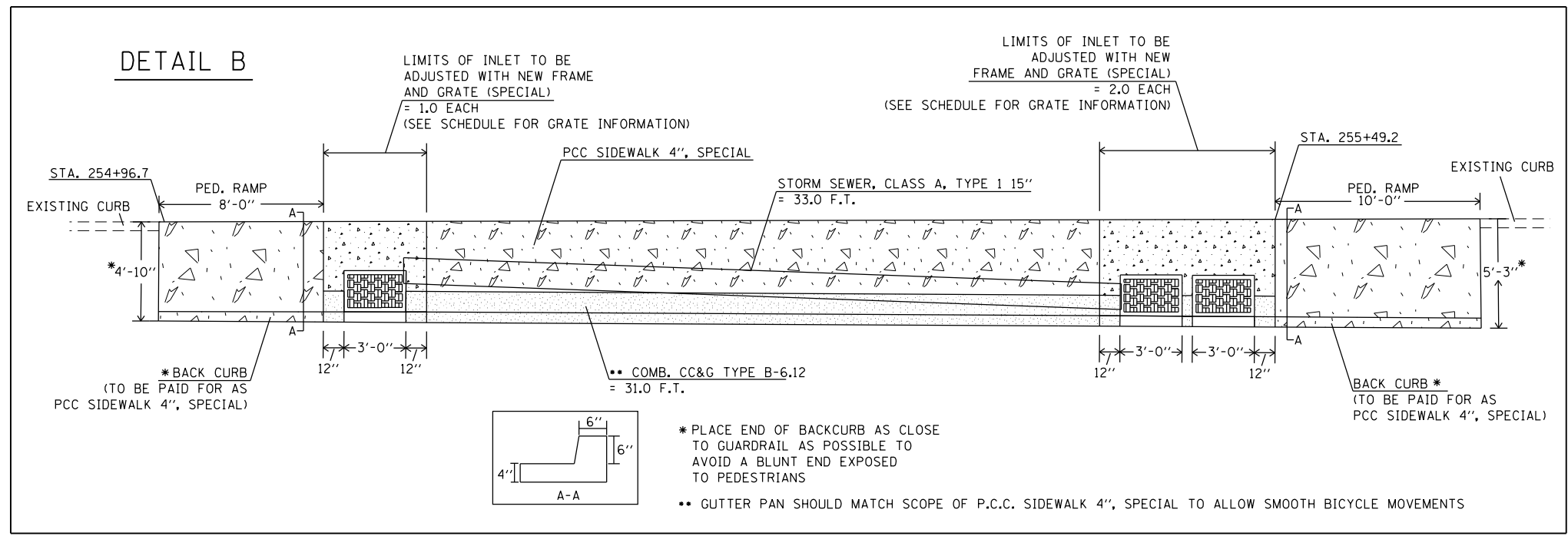
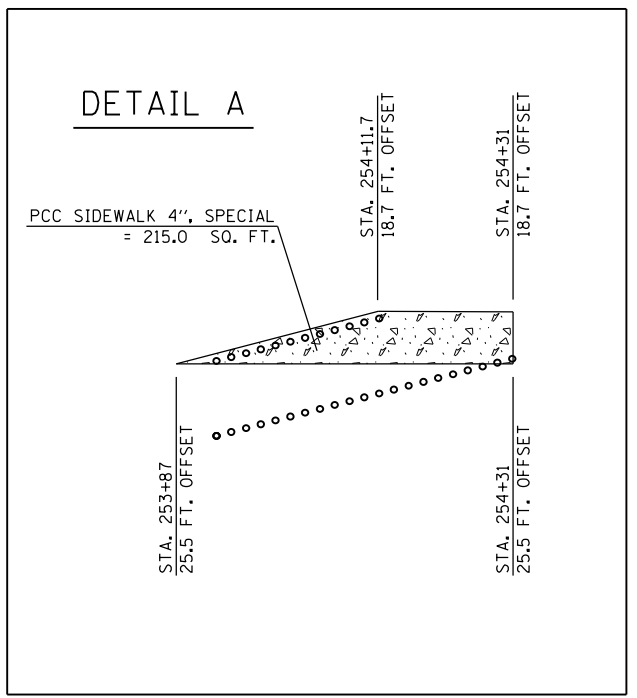
MODEL: S:\MODELS\MAMES
FILE NAME: STILES

USER NAME = \$USERS	DESIGNED -	REVISED -
PLOT SCALE = \$SCALE\$	DRAWN -	REVISED -
PLOT DATE = \$DATE\$	CHECKED -	REVISED -
	DATE -	REVISED -

**STATE OF ILLINOIS
DEPARTMENT OF TRANSPORTATION**

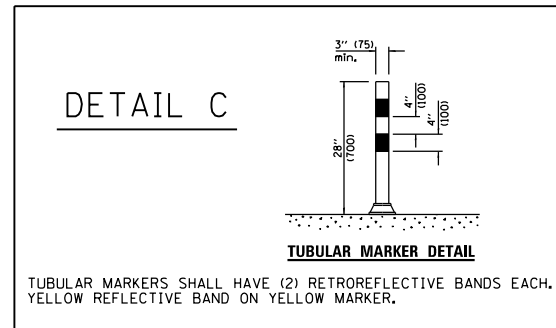
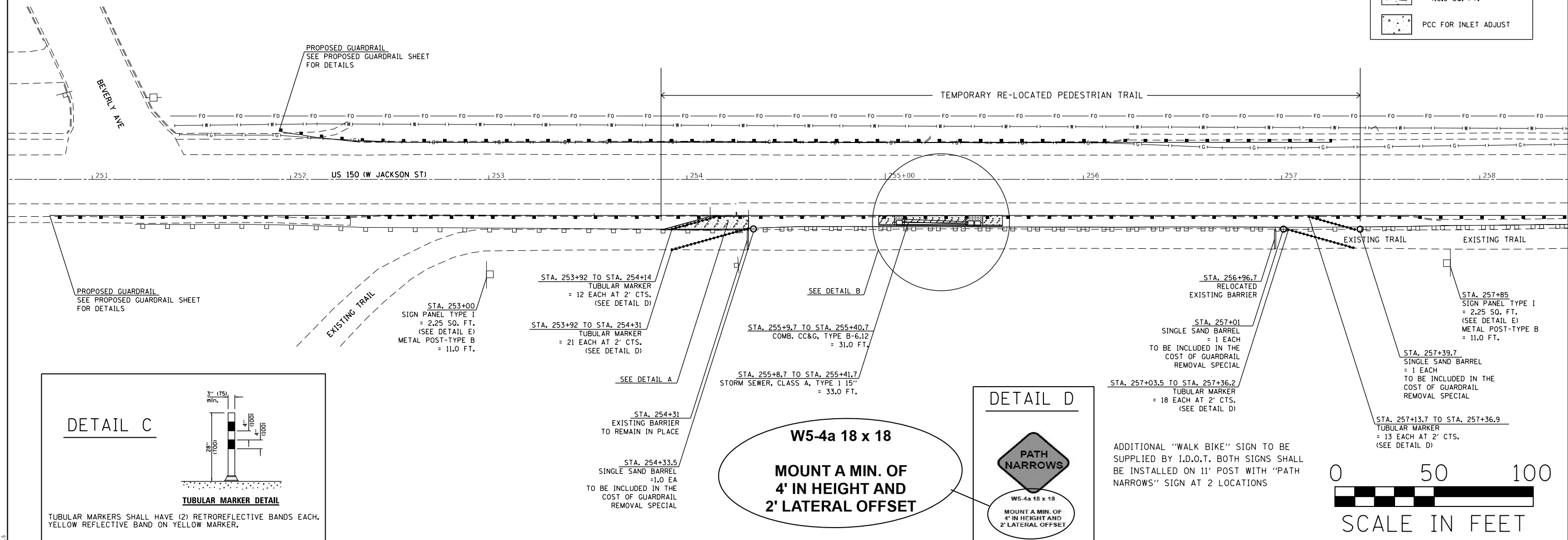
REMOVAL PLAN			
SCALE:	SHEET	OF SHEETS	STA. TO STA.

F.A. RTE.	SECTION	COUNTY	TOTAL SHEETS	SHEET NO.
6757	105-BPL	TAZEWELL	11	8
CONTRACT NO. 68E76				
ILLINOIS FED. AID PROJECT				



LEGEND

	PCC SIDEWALK 4", SPECIAL = 415.3 SQ. FT.
	PCC FOR INLET ADJUST



USER NAME = \$USERS	DESIGNED -	REVISED -
PLOT SCALE = \$SCALES	DRAWN -	REVISED -
PLOT DATE = \$DATES	CHECKED -	REVISED -
	DATE -	REVISED -

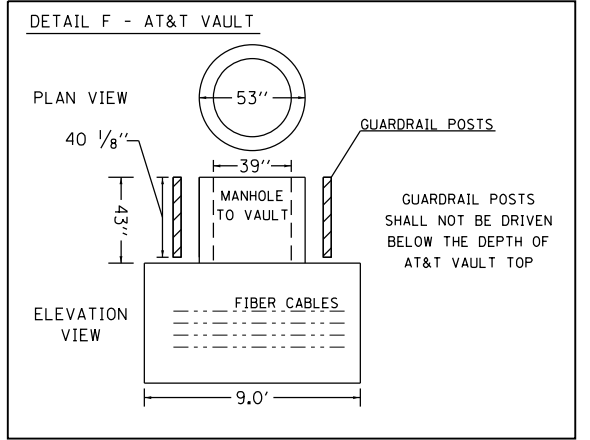
STATE OF ILLINOIS
DEPARTMENT OF TRANSPORTATION

PROPOSED PLAN

SCALE: SHEET OF SHEETS STA. TO STA.

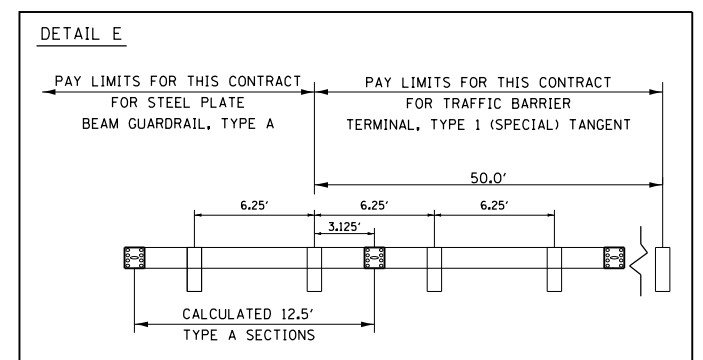
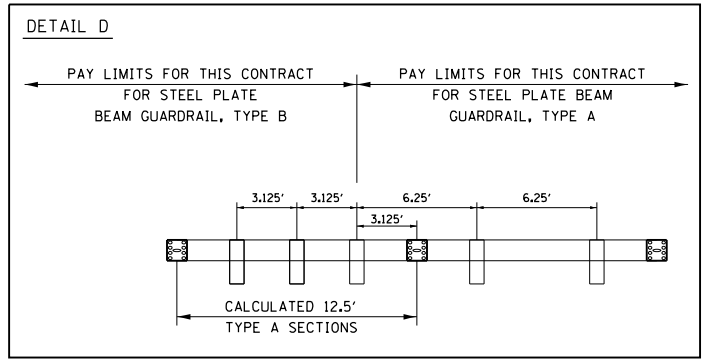
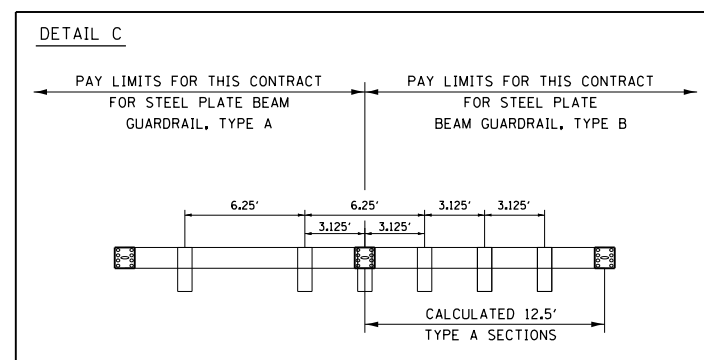
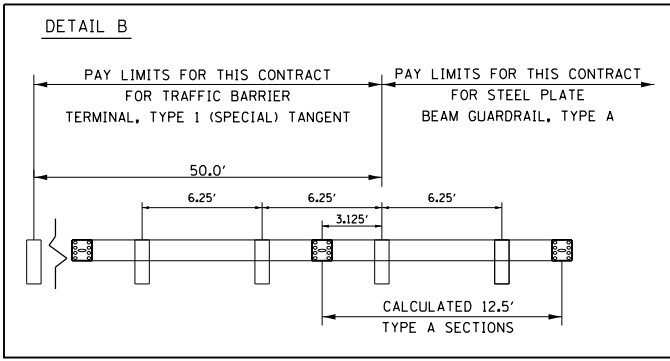
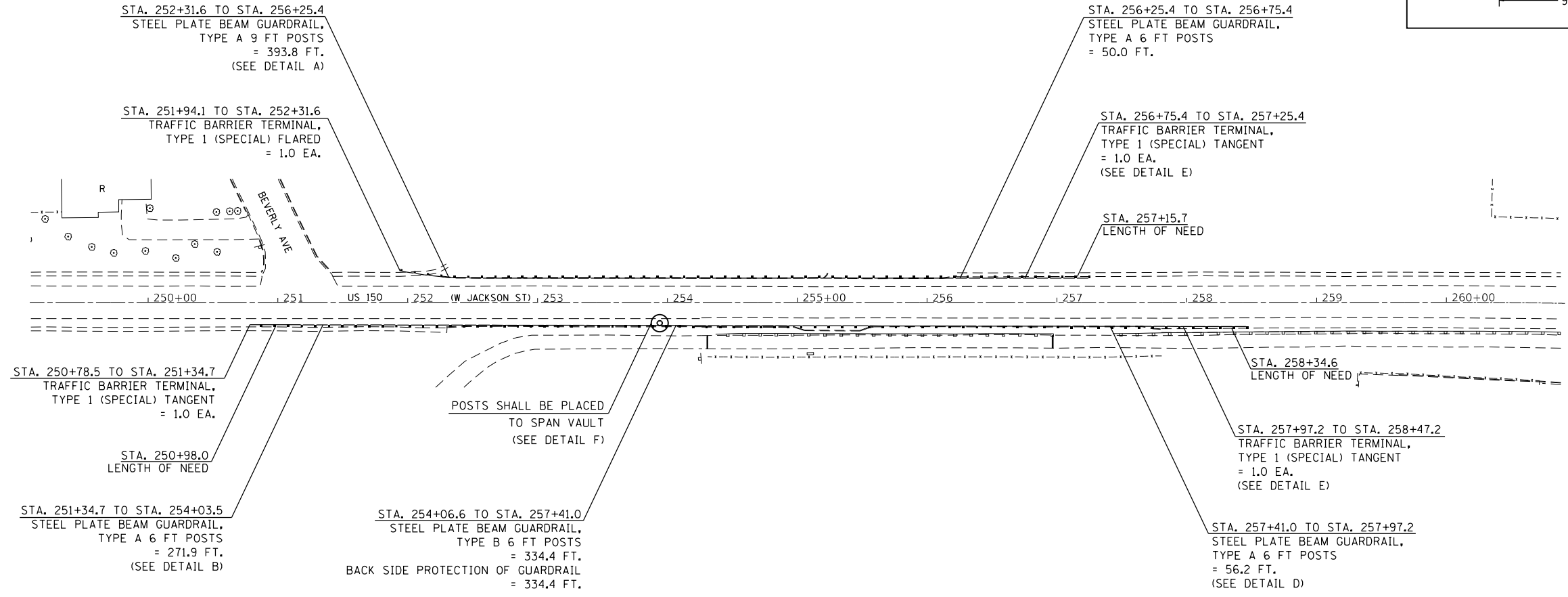
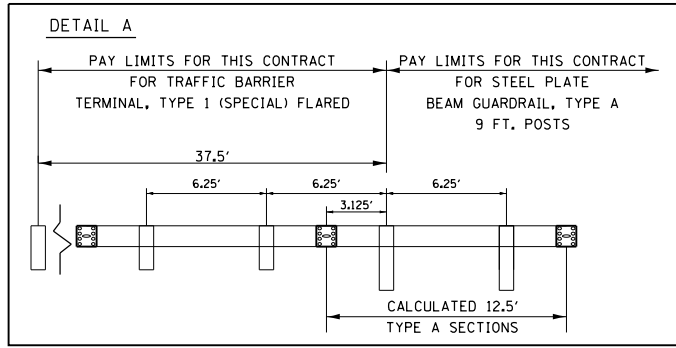
F.A.U. RTE.	SECTION	COUNTY	TOTAL SHEETS	SHEET NO.
6757	105-BLP	TAZEWELL	11	9
CONTRACT NO. 68E76				
ILLINOIS FED. AID PROJECT				

MODEL: \$MODELNAME\$
FILE NUMBER: \$FILES\$



PLAN NOTES

- 1) STATION RANGES ARE FROM POST TO POST.
- 2) POST HOLES ARE TO BE CORED IN ACCORDANCE WITH SECTION 630 OF THE STANDARD SPECIFICATIONS WHEN PAVED SURFACES ARE ENCOUNTERED.
- 3) GUARDRAIL POSTS SHALL BE LAID OUT 3 INCHES FROM SOUTH SIDE OF EXISTING HMA CURB.
- 4) GUARDRAIL SHALL EXTEND ON SAME TANGENT THROUGH DRAINAGE ALCOVE.



MODEL: SHOBELNAMES
FILE: NADMS: STILES

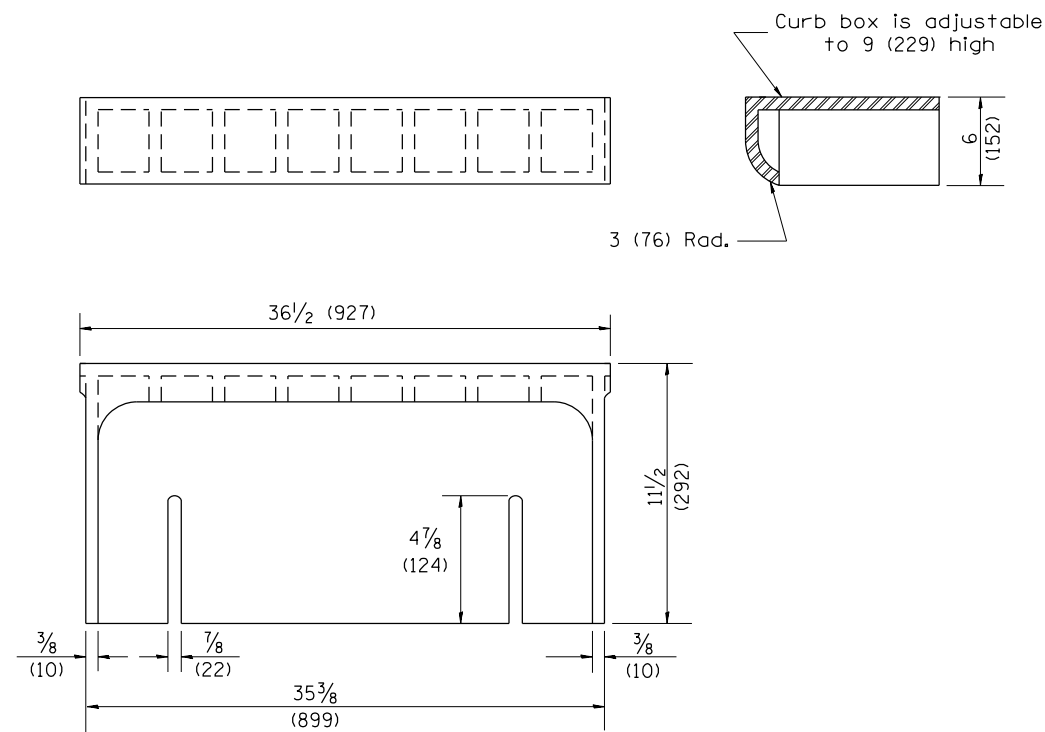
USER NAME = \$USERS	DESIGNED -	REVISED -
PLOT SCALE = \$SCALE\$	DRAWN -	REVISED -
PLOT DATE = \$DATE\$	CHECKED -	REVISED -
	DATE -	REVISED -

**STATE OF ILLINOIS
DEPARTMENT OF TRANSPORTATION**

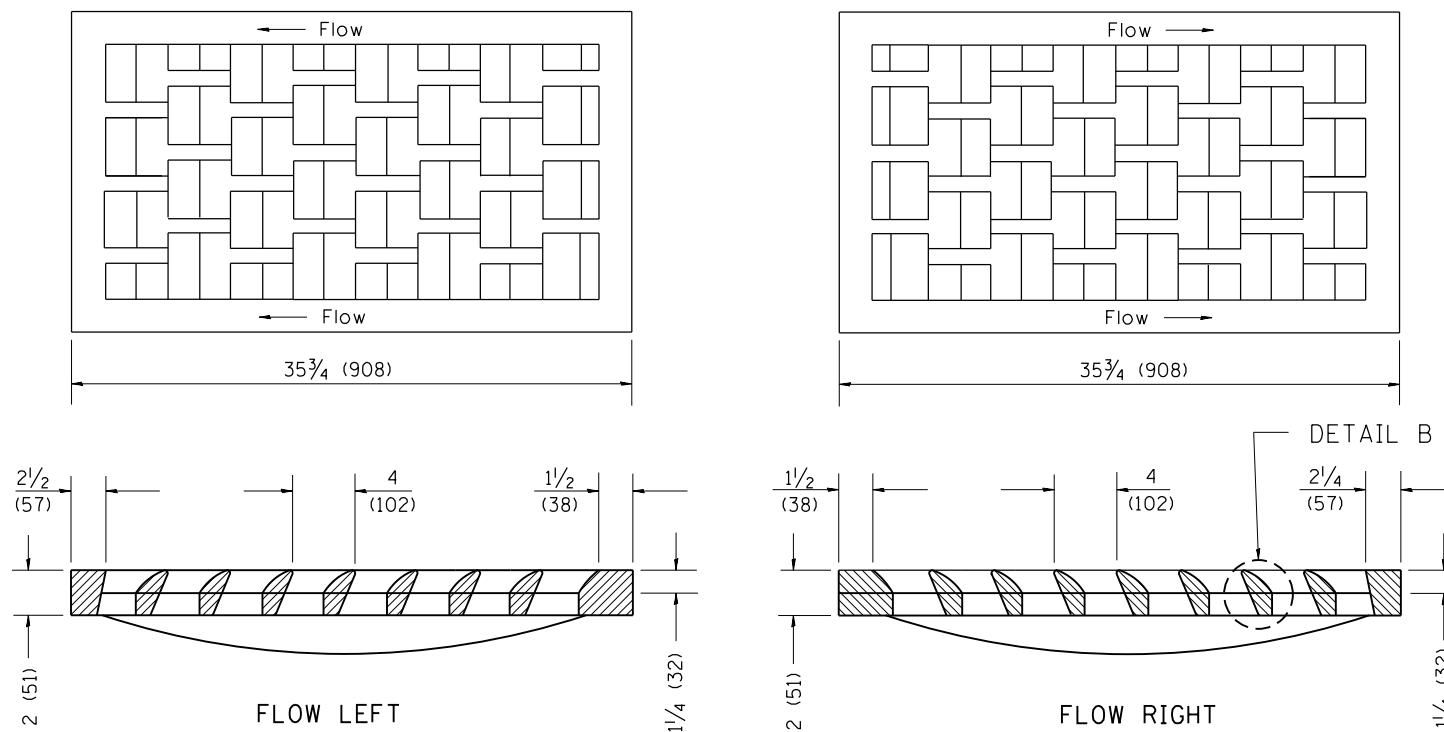
PROPOSED GUARDRAIL

SCALE: SHEET OF SHEETS STA. TO STA.

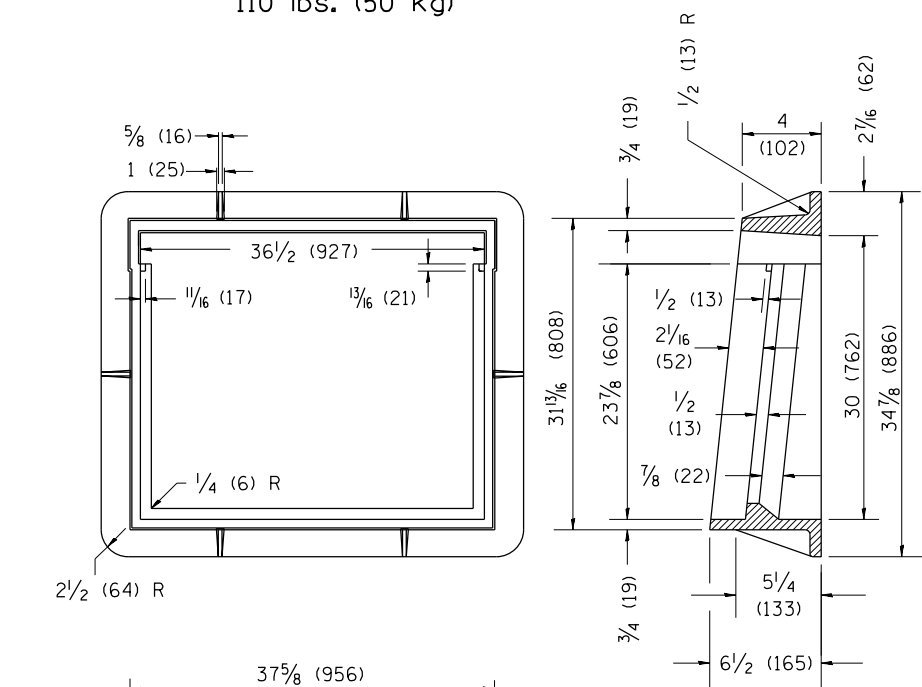
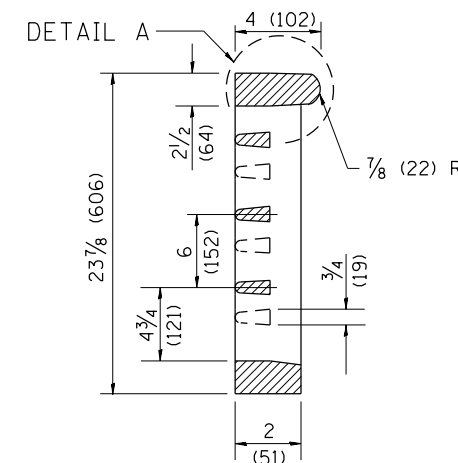
F.A.U. RTE.	SECTION	COUNTY	TOTAL SHEETS	SHEET NO.
6757	105-BLP	TAZEWELL	11	10
CONTRACT NO. 68E76				
ILLINOIS FED. AID PROJECT				



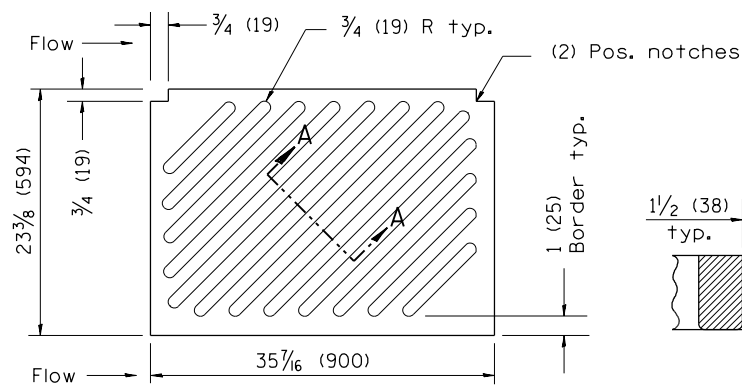
CAST CURB BOX
110 lbs. (50 kg)



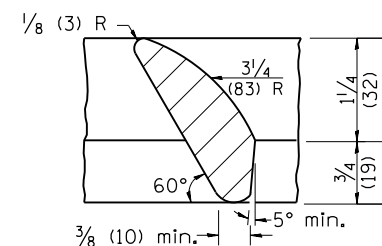
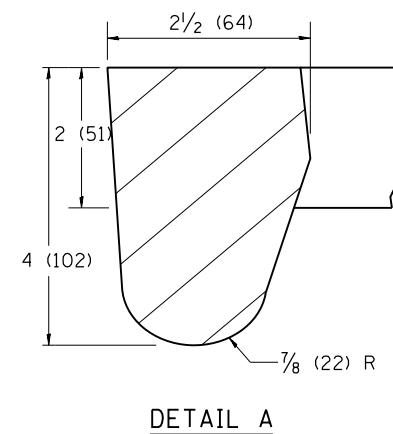
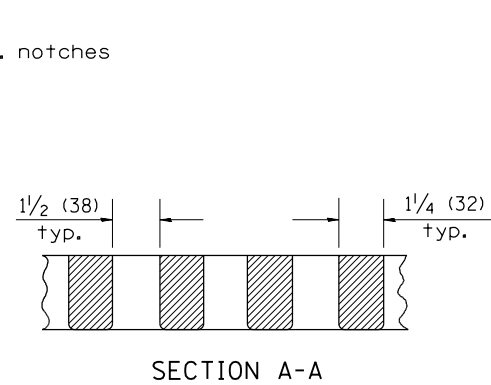
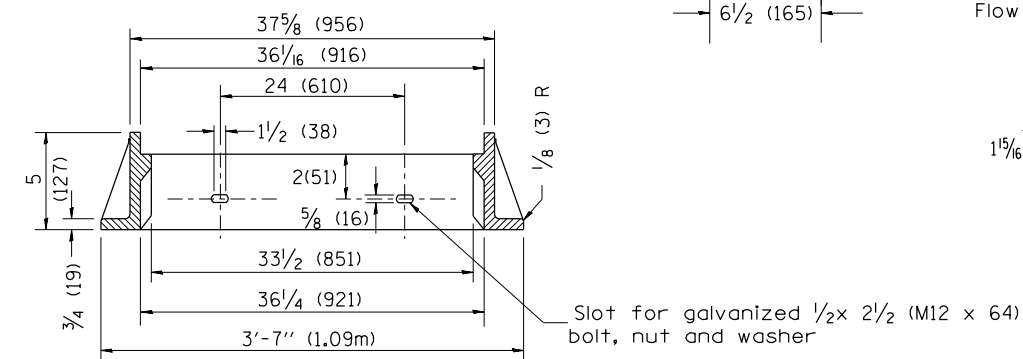
CAST VANE GRATES
(SPECIFY LEFT OR RIGHT FLOW)
230 lbs. (104 KG)



CAST FRAME
271 lbs. (123 kg)



CAST DIAGONAL GRATE
(Reversible for flow)
217 lbs. (98 kg)



GENERAL NOTES

1. The frame and grate shown on this drawing are for use with all TYPE G-1 and TYPE G-1, SPECIAL DRAINAGE STRUCTURES. See plans for grate type and flow direction.
2. Flow direction: As viewed from street side.
3. Material: cast gray iron.

All dimensions are in inches (millimeters) unless otherwise noted.

01-01-97	RENUM. B-10.01, NEW REVISION BOX	T.P.
10-16-06	REVISED TO 2007 SPEC.	M.A.

STATE OF ILLINOIS
DEPARTMENT OF TRANSPORTATION

FRAME & GRATES FOR TYPE G-1 AND TYPE G-1,
SPECIAL DRAINAGE STRUCTURES

NOT TO SCALE

CADD STD. 604001-D4

F.A.U. RTE.	SECTION	COUNTY	TOTAL SHEETS	SHEET NO.
6757	105-BLP	TAZEWELL	11	11
FED. ROAD DIST. NO. ILLINOIS FED. AID PROJECT			CONTRACT NO. 68E76	