

D.M. C.R.I. & P.R.R. - 81' 7" x 5"  
66' L.H. 376.887+84. Elev. 634.083

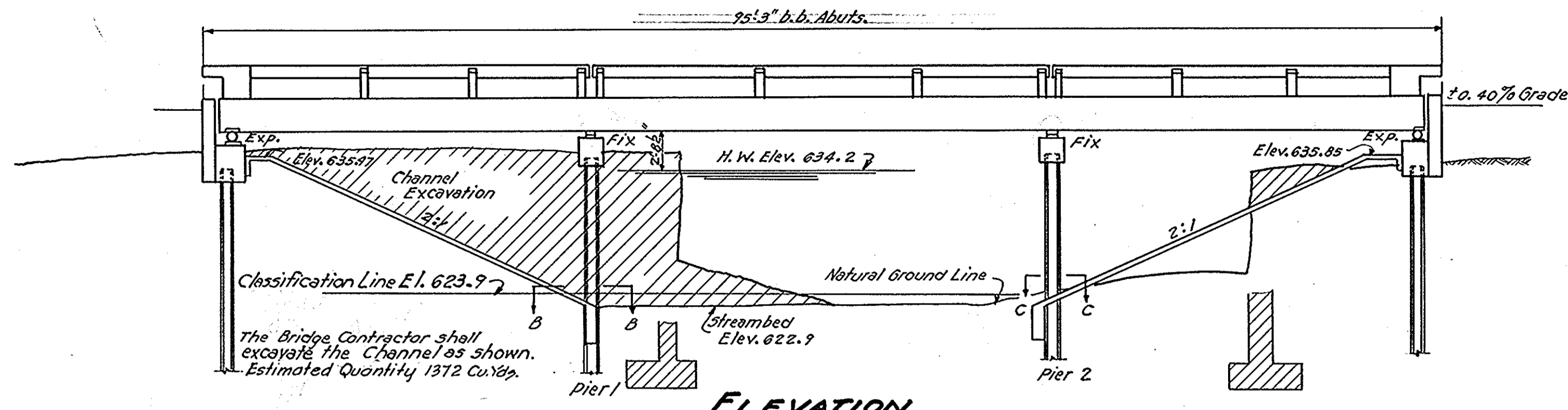
Existing structure: R.C. thru Girder, Closed Abuts.  
45' cl. span - 20' ROW.  
Contractor shall remove existing super and portion  
of abut, necessary to facilitate construction.  
No Salvage.

STATE OF ILLINOIS  
DEPARTMENT OF PUBLIC WORKS & BUILDINGS  
DIVISION OF HIGHWAYS

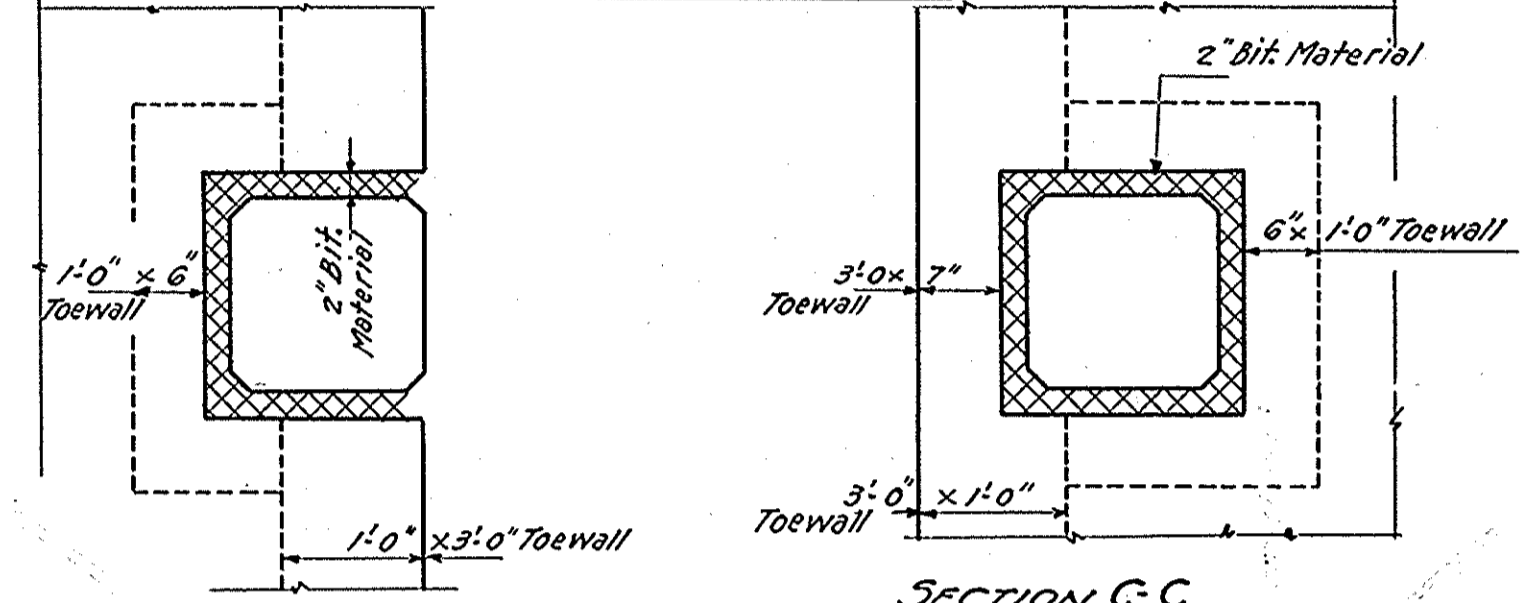
ROUTE NO.	SECTION	COUNTY	TOTAL SHEETS	SHEET NO.	SHEET NO.
S. B. I. 7	7-B-R	Bureau	18	14	3 SHEETS
F.A.					
FED. ROAD DIST. NO. 7	ILLINOIS	FED. AID PROJECT			

**GENERAL NOTES**

Class-X Concrete shall be used throughout except in Handrails.  
Handrail Concrete shall be used in Handrails.  
The Concrete floor slab shall be finished in accordance with the applicable provisions  
of Sec. 27 of the Standard Specifications.  
Slope Wall shall be reinforced with welded wire fabric 6"x6" mesh, #4 wires weighing  
58# per 100 Sq. Ft. Layout of slope walls may be varied to suit ground conditions in the  
field as directed by the Engineer.  
All rollers, bearing plates and anchor bolts shall be fabricated and  
set in accordance with Art. 51.14 of the Standard Specifications and are  
included for payment as Structural Steel.  
Expansion guards shall be fabricated and erected in accordance with Art. 51.12(d)  
of the Standard Specifications and are included for payment as Structural Steel.  
The following surfaces shall be given two shop coats of red lead paint:  
4" x 4" x 1/2", and 2" x 7/8" x 1/2" straps except as otherwise provided. All Structural Steel  
shall receive one shop coat of red lead paint and two field coats of aluminum paint.  
See Arts. 57.1 to 57.5 inclusive of the Standard Specifications.  
All paint shall be furnished and applied by the Contractor.  
The Contractor shall drive 2 test piles in a permanent location as directed by the  
Engineer before casting the remainder of piles.  
Boring Data are shown only as a guide to bidders in estimating soil conditions  
which may be encountered in the field.

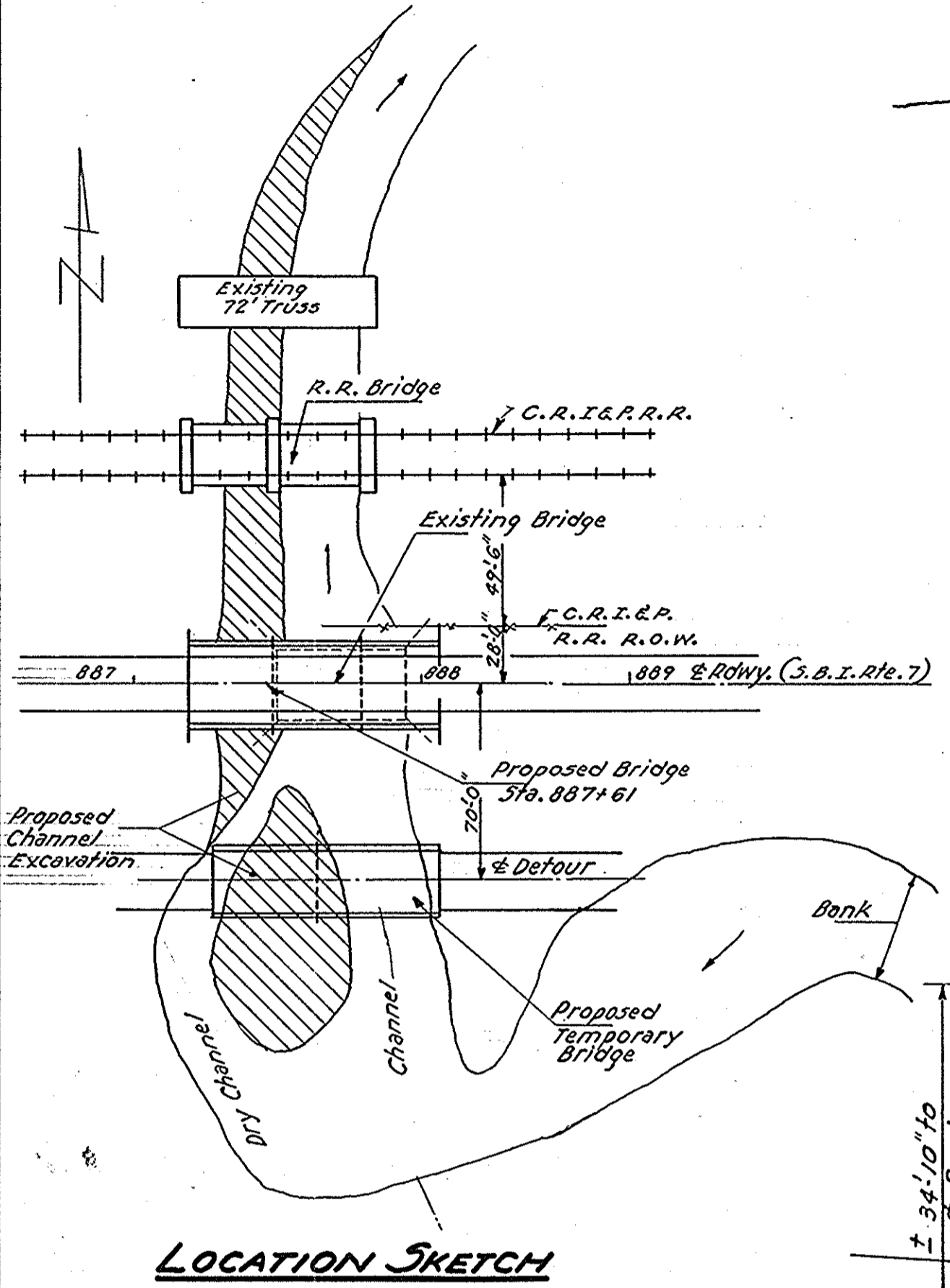


**ELEVATION**

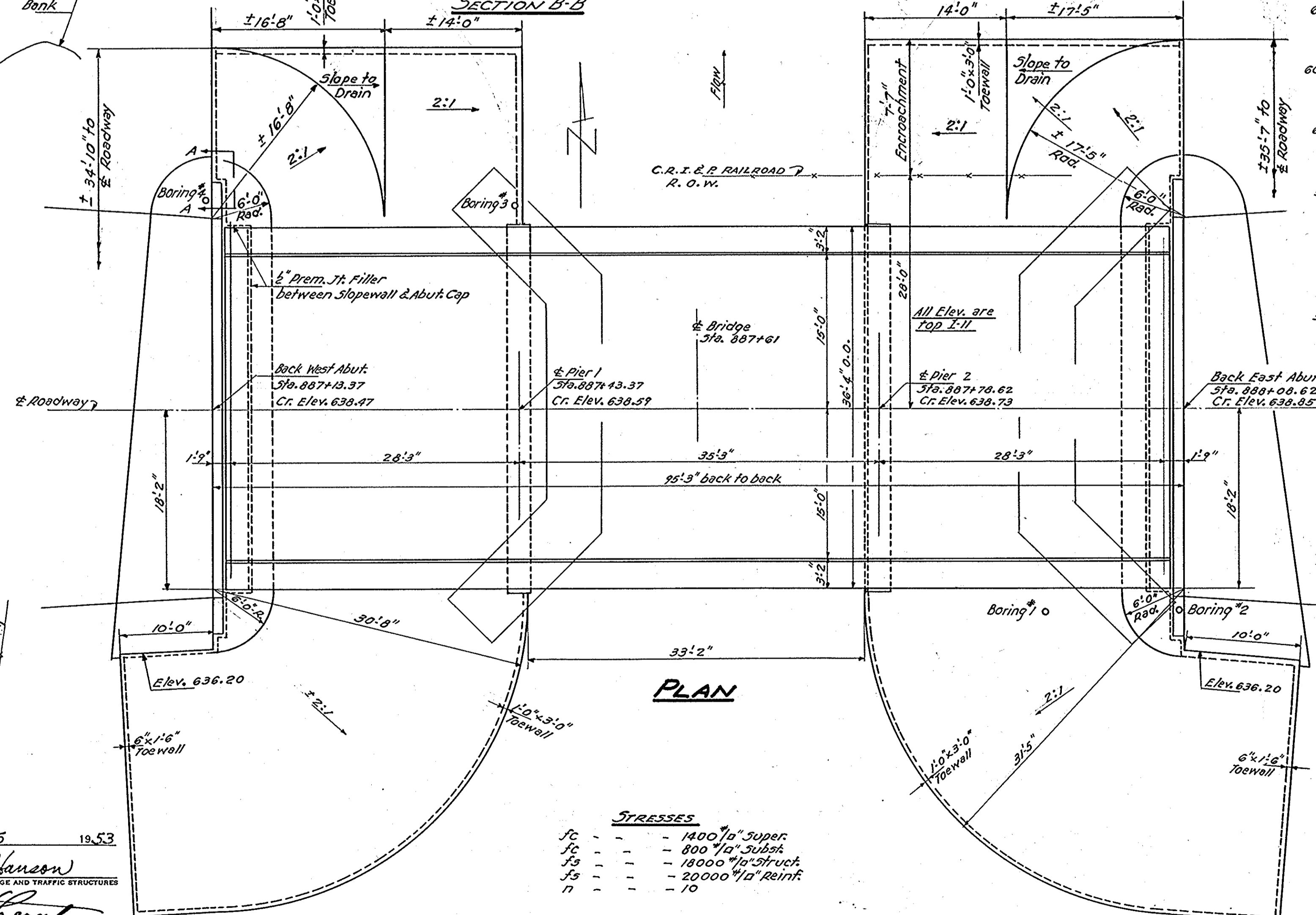


**SECTION B-B**

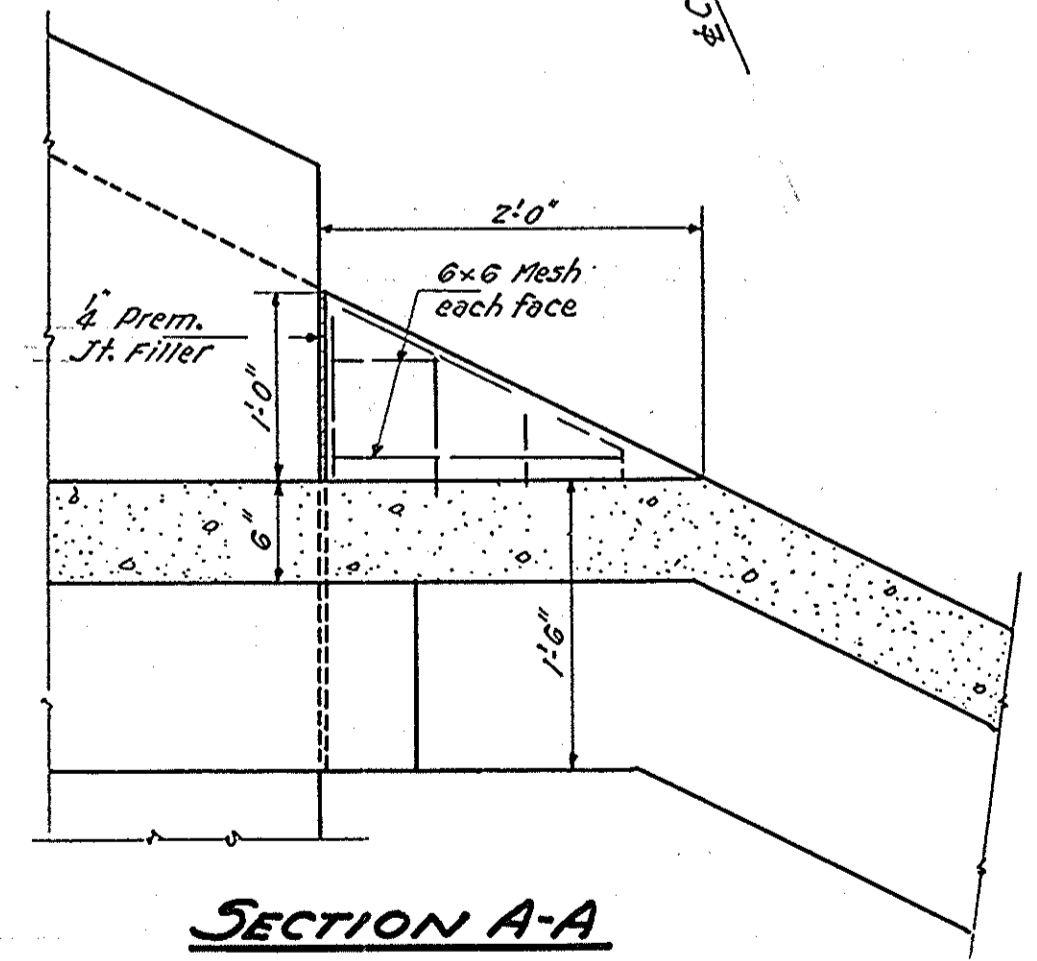
**SECTION C-C**



**LOCATION SKETCH**



**PLAN**



**SECTION A-A**

Boring No. 1 Sta. 887+75 20' L.H. ±	Boring No. 2 Sta. 888+08 20' L.H. ±	Boring No. 3 Sta. 887+43 20' L.H. ±	Boring No. 4 Sta. 887+13 20' L.H. ±
Ground Surface 628.4 N 9U	Ground Surface 628.6 N 9U	Ground Surface 629.2 N 9U	Ground Surface 629.0 N 9U
625 3	625 3	625 3	625 3
620 3	620 3	620 3	620 3
615 3	615 3	615 3	615 3
610 3	610 3	610 3	610 3
605 30	605 30	605 30	605 30
600 27	600 30	600 30	600 30
595 24	595 25	595 25	595 25
590 45	590 30	590 30	590 30
585 80	585 60	585 60	585 60
580 100	580 80	580 80	580 80
576 80	576 80	576 80	576 80

**BORING DATA**

**TOTAL BILL OF MATERIAL**

ITEM	SUPERSTR.	SUBSTR.	TOTAL
Class-X Concrete	Cu. Yds. 184.5	48.5	233.0
Handrail Concrete	Cu. Yds. 4.4	4.4	4.4
Reinforcement Bars	Lbs. 42830	4080	46910
Structural Steel	Lbs. 6260		6260
Name Plates	Each 1		1
Precast Conc. Piles (40'lp)	Lin. Ft. 440		440
Precast Conc. Piles (35'lp)	Lin. Ft. 585		585
Test Piles	Each 2		2
Slope Wall	Sq. Yds. 750		750
Removal of Existing Structure	Each 1		1
Class-A Excav. for Structures	Cu. Yds. 35		35
Class-B Excav. for Structures	Cu. Yds. 32		32
Channel Excavation	Cu. Yds. 1372		1372

**WATERWAY INFORMATION**  
Drainage Area 1100 Acres  
Character Level, Rolling, Cultivated  
Reg'd. (30 Year Flood) 600' ±  
Present Opening 456' ±  
Proposed Opening 600' ±

STATION 887+61  
BUILT 195 BY  
STATE OF ILLINOIS  
S.B.I. RTE. 7-SEC. 7-B-R  
LOADING H-20-516

LETTERING FOR NAME PLATE  
See Standard 2113

Loading H-20-516-44

DESIGNED C. E. T. Jr.  
CHECKED B. Gasman  
DRAWN C. E. T. Jr.  
CHECKED B. Gasman

EXAMINED W. B. Hanson  
PASSED C. E. T. Jr.  
APPROVED F. N. Barker

May 15 1953  
ENGINEER OF BRIDGE AND TRAFFIC STRUCTURES  
ENGINEER OF DESIGN  
CHIEF HIGHWAY ENGINEER

9/30/53 - C. E. T. Jr.  
Revised Slope wall

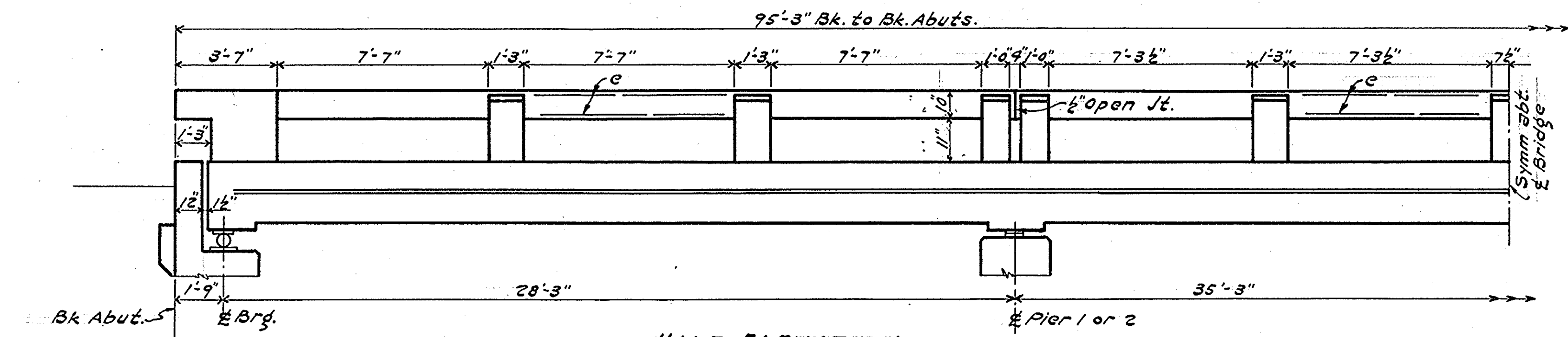
**S.B.I. RTE. 7-SEC. 7-B-R**  
**BUREAU COUNTY**  
**STATION 887+61**

STATE OF ILLINOIS  
DEPARTMENT OF PUBLIC WORKS & BUILDINGS  
DIVISION OF HIGHWAYS

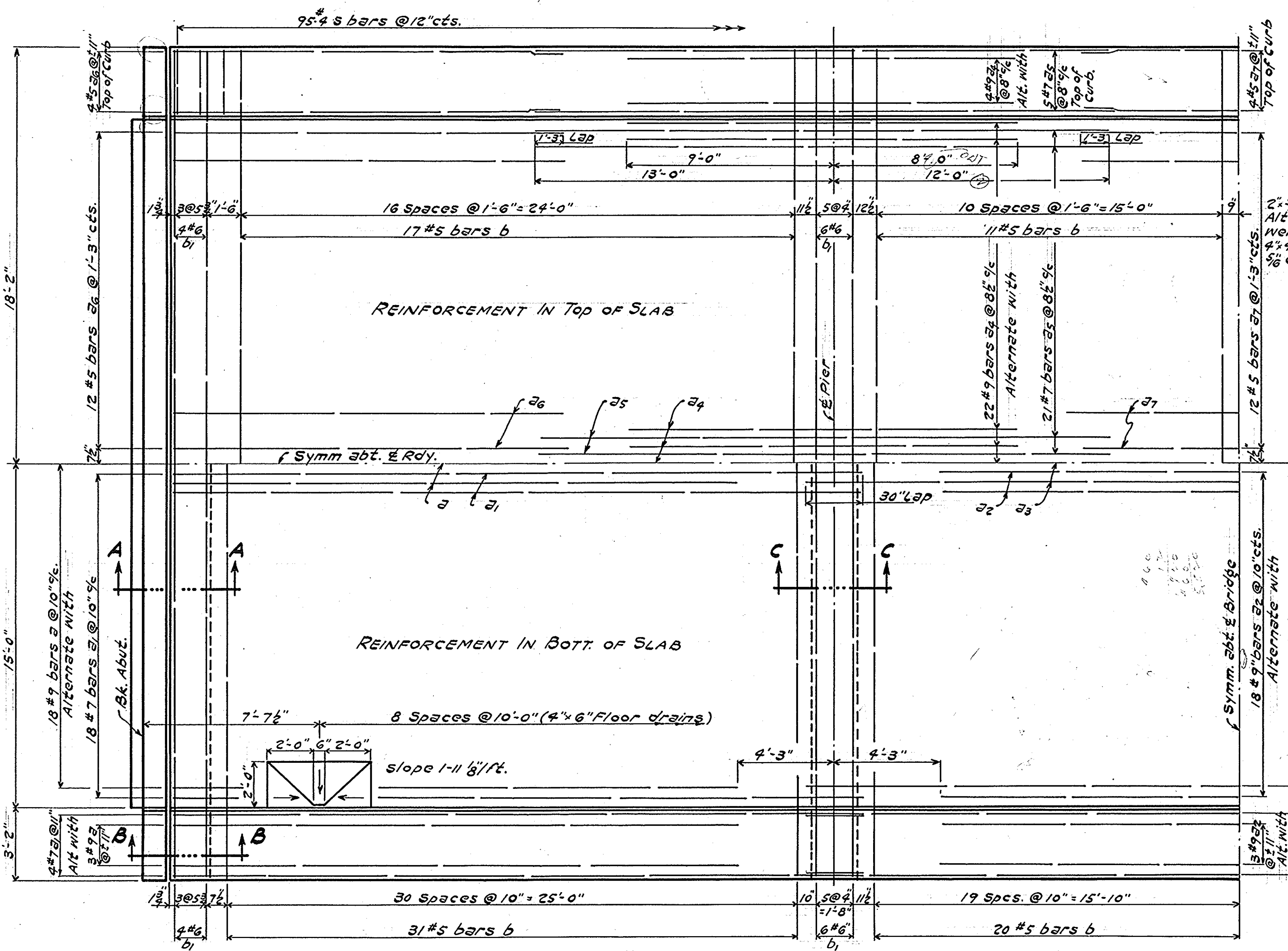
ROUTE NO.	SECTION	COUNTY	TOTAL SHEETS	SHEET NO.
S.B.I. 7	7B-R	Bureau	18	15
F.A.				
FED. ROAD DIST. NO. 7	ILLINOIS	FED. AID PROJECT		

SHEET NO. 2  
3 SHEETS

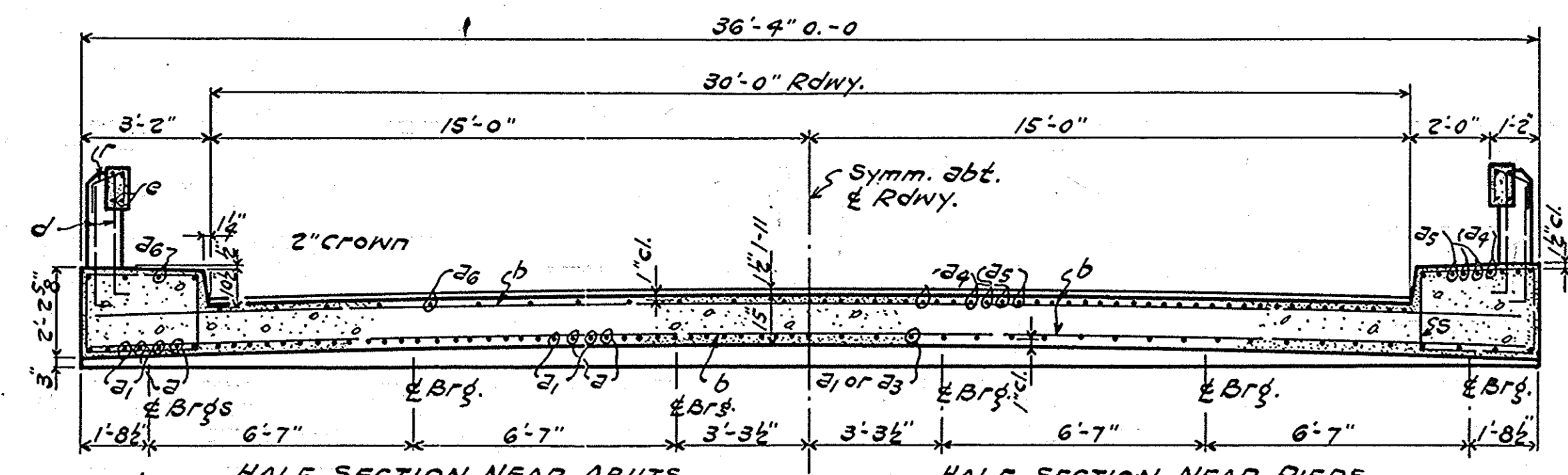
Note: For Handrail details  
Std. 2070 RA Type 3-B



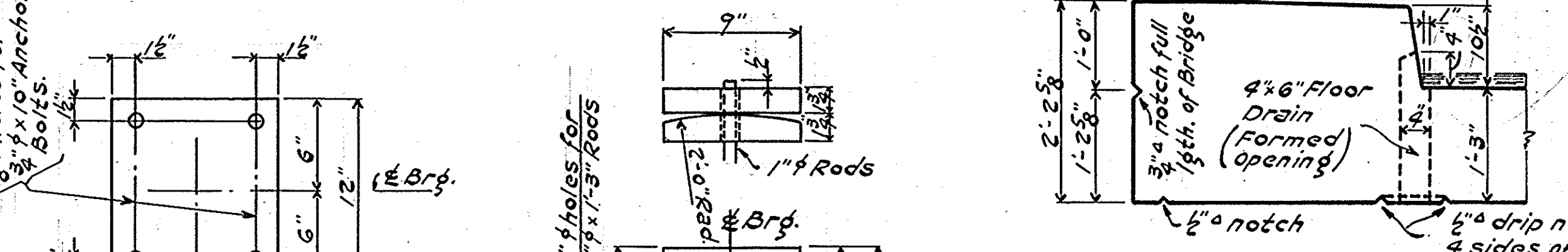
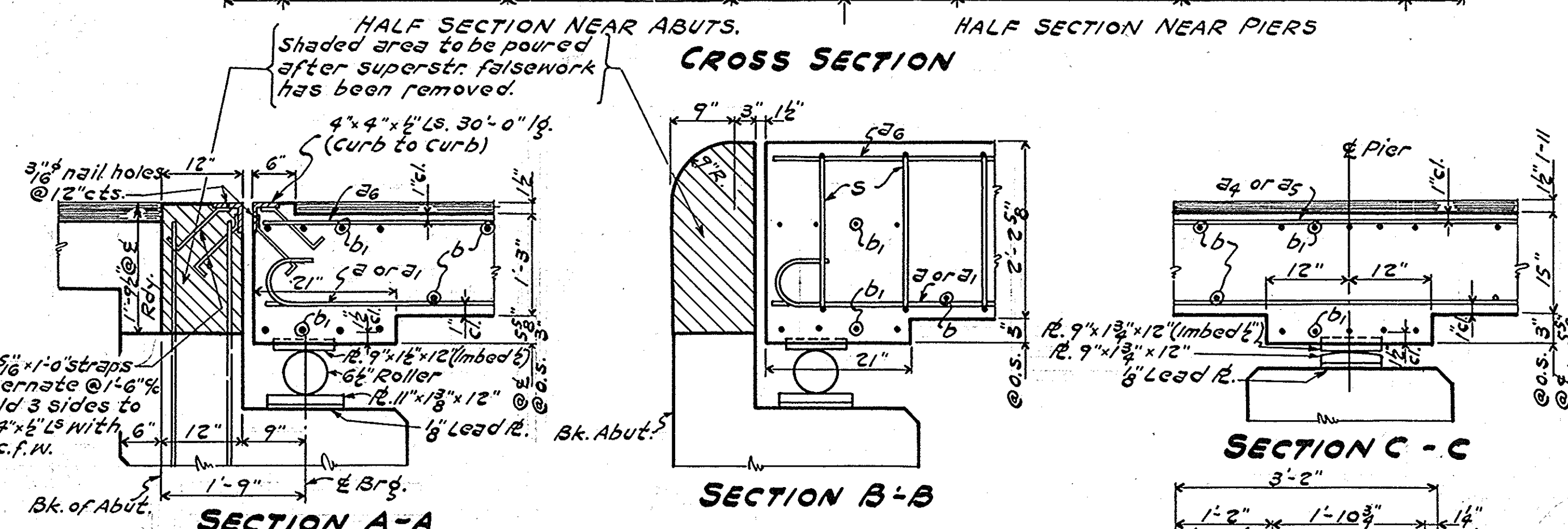
HALF ELEVATION



HALF PLAN



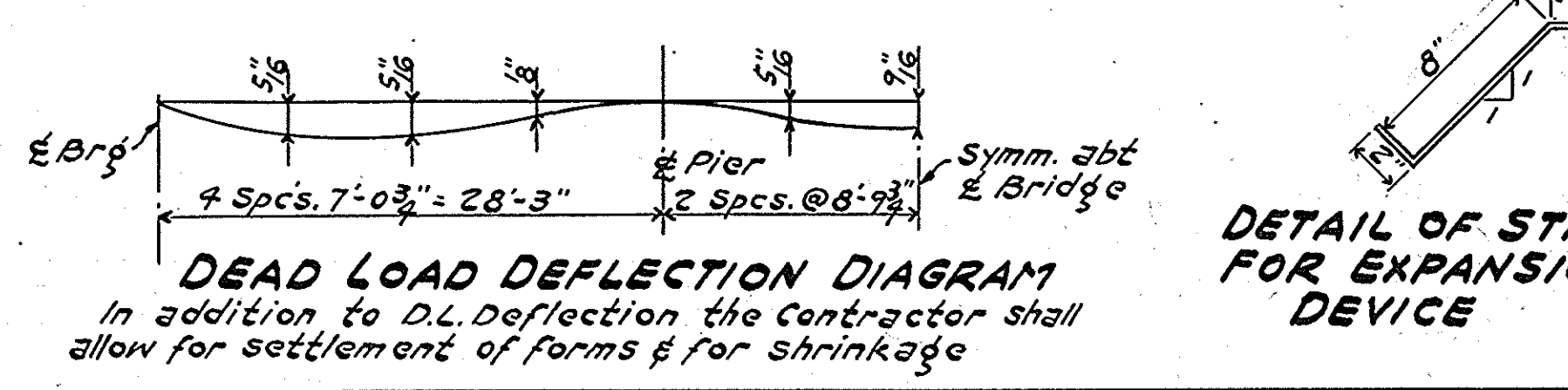
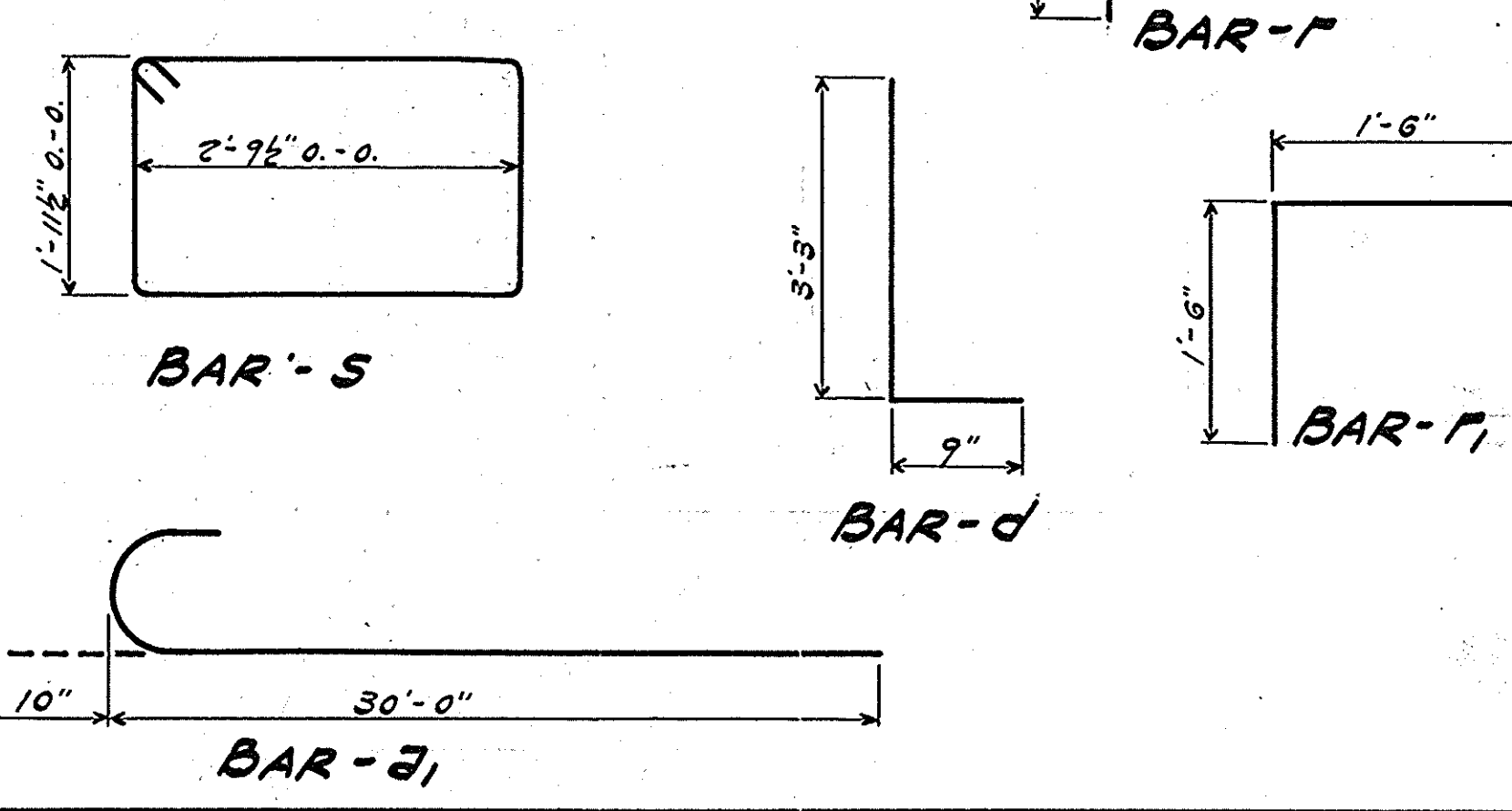
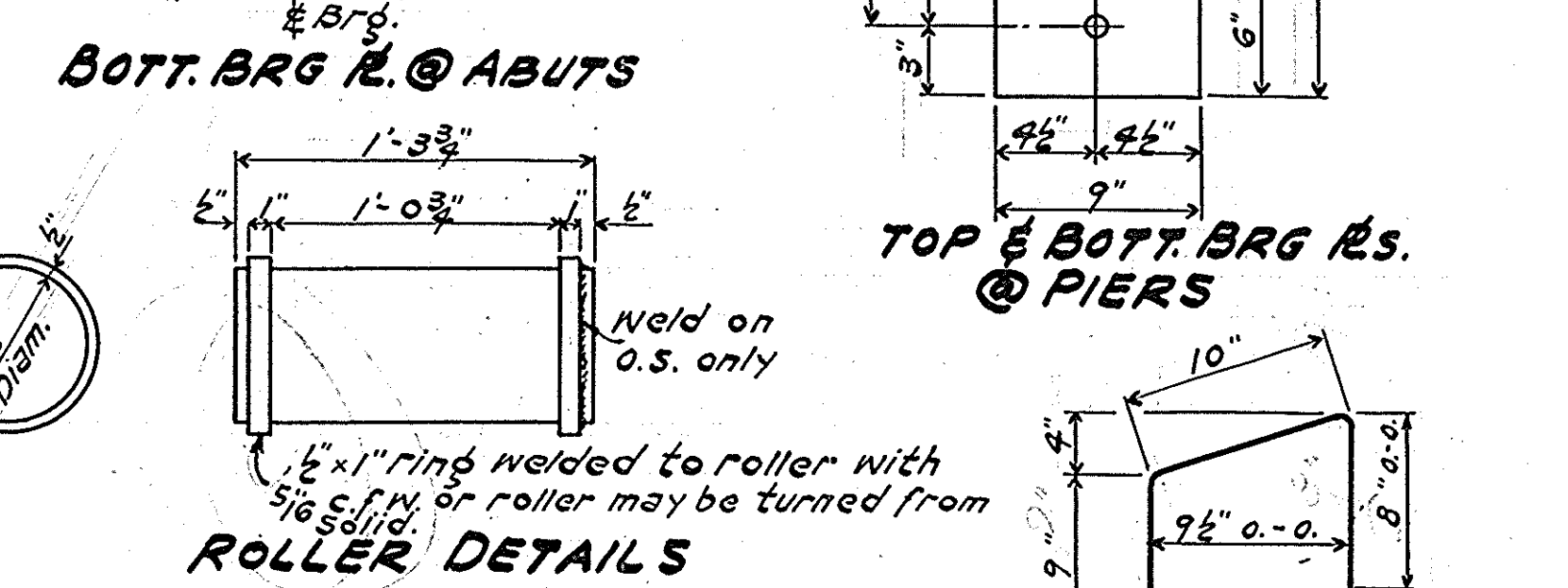
CROSS SECTION



BILL OF MATERIAL SUPER

BAR	NO	SIZE	LENGTH	SHAPE
a	82	#9	24'-6"	
a1	88	#7	30'-10"	C
a2	42	#9	26'-0"	
a3	43	#7	37'-9"	
a4	102	#9	17'-0"	
a5	104	#7	25'-0"	
a6	67	#5	17'-0"	
a7	32	#5	13'-9"	
b	157	#5	35'-6"	
b1	40	#6	35'-6"	
d	108	#5	4'-0"	
e	16	#5	28'-9"	
e1	8	#5	35'-0"	
f	56	#4	2'-3"	
f1	12	#4	3'-0"	
s	190	#4	10'-6"	

Class X Concrete	cu. yds. 184.5
Handrail Concrete	cu. yds. 4.4
Reinforcement Bars	Lbs. 92830
Structural Steel	Lbs. 6260
Name Plate	Each One



DETAIL OF STRAP FOR EXPANSION DEVICE

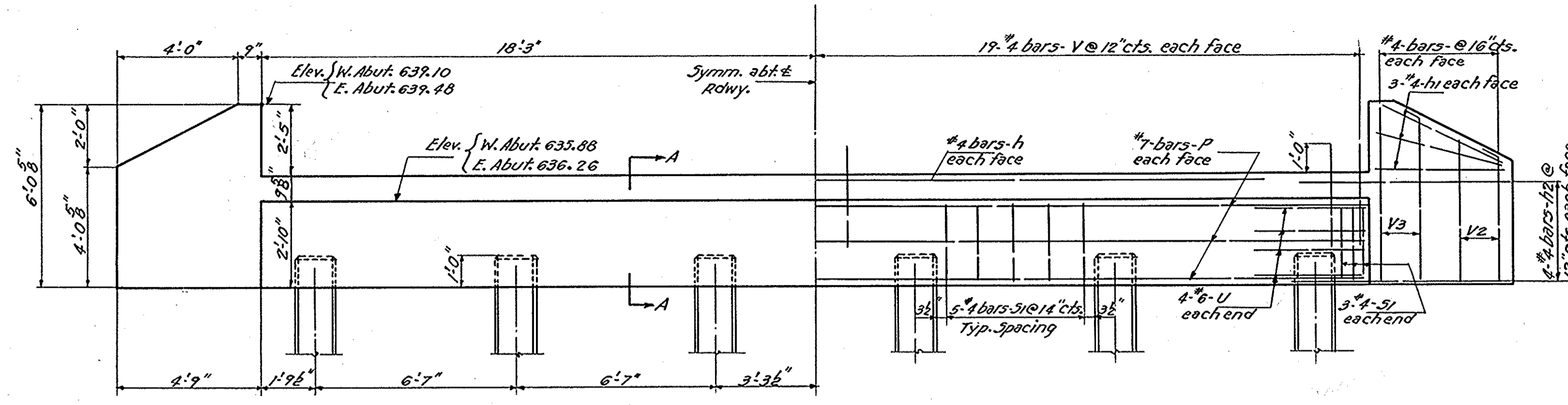
DESIGNED: *Carl E. Thumant*  
CHECKED: *B. Jarman*  
DRAWN: *Carl E. Thumant*  
CHECKED: *B. Jarman*

EXAMINED: *W. B. Hanson*  
PASSED: *E. P. ...*  
APPROVED: *J. N. Parker*

May 15 1953

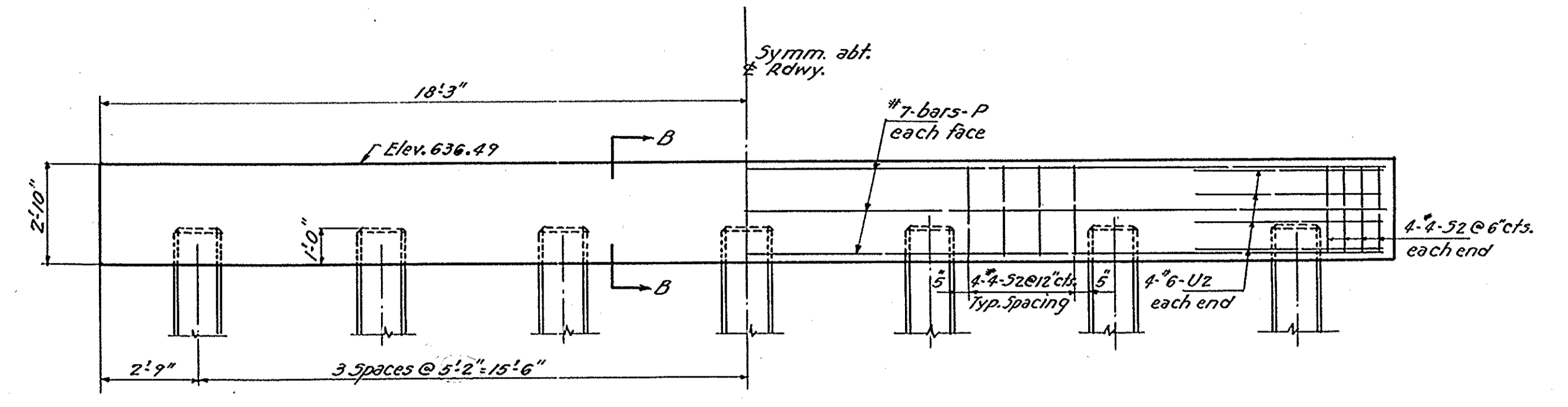
ENGINEER OF BRIDGE AND TRAFFIC STRUCTURES  
ENGINEER OF DESIGN  
CHIEF HIGHWAY ENGINEER

S.B.I. RTE. 7 SEC. 7-B-R  
BUREAU COUNTY  
STATION 887+61

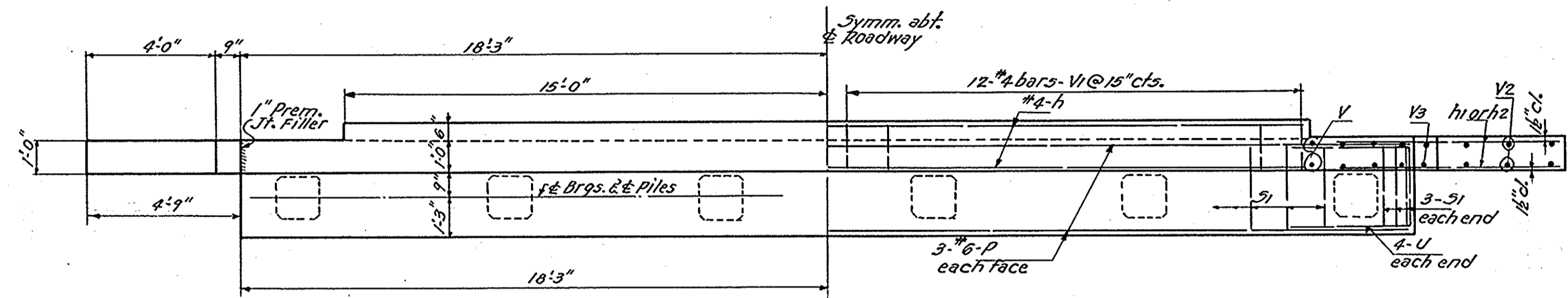


**ABUTMENT ELEVATION**

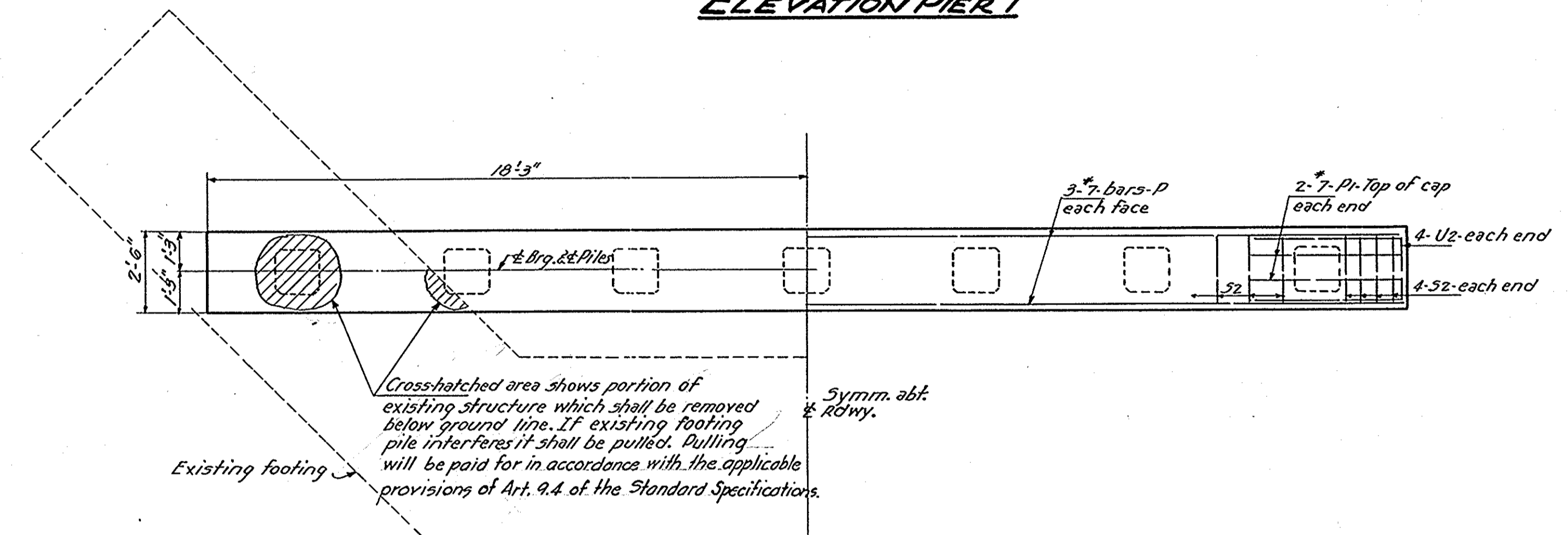
Abutment Piles  
24 Ton Capacity  
Est. Length 40'  
6 Req'd. each abutment



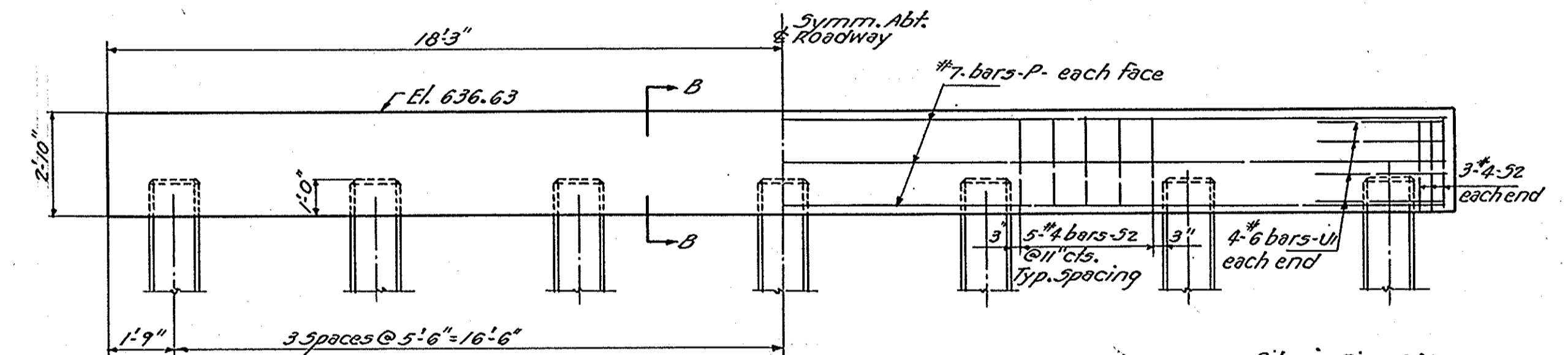
**ELEVATION PIER 1**



**ABUTMENT PLAN**

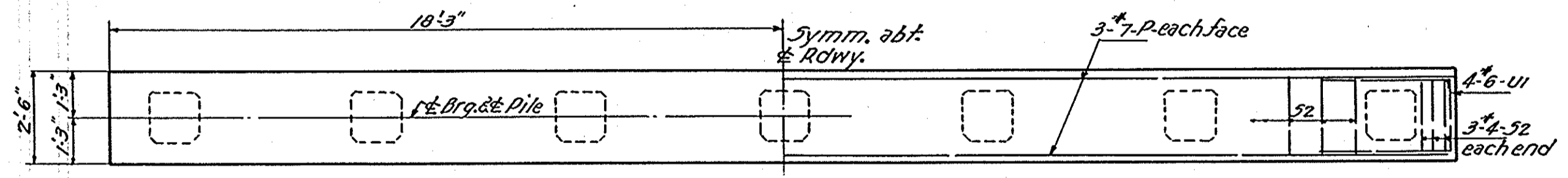


**PLAN PIER 1**

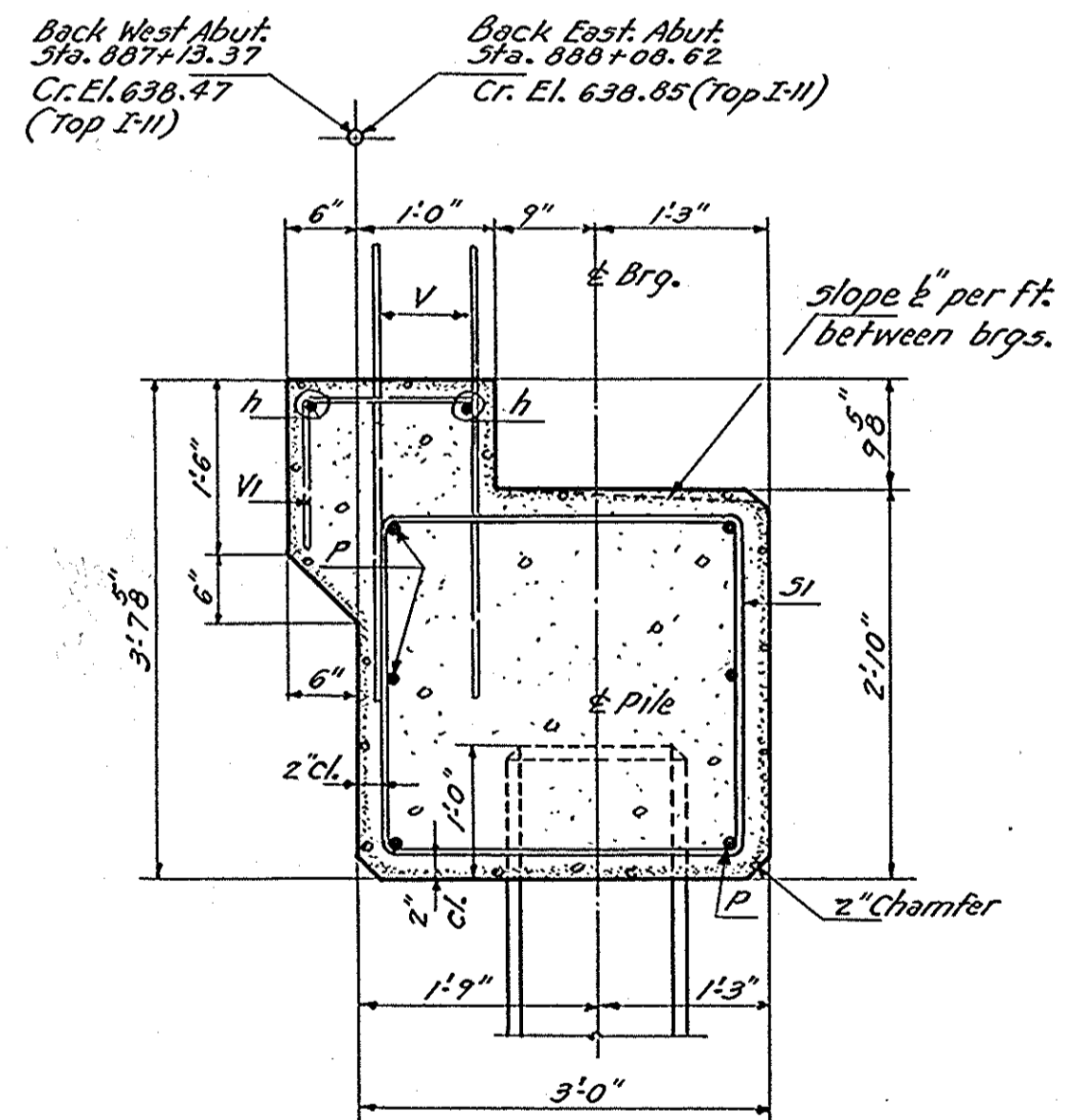


**ELEVATION PIER 2**

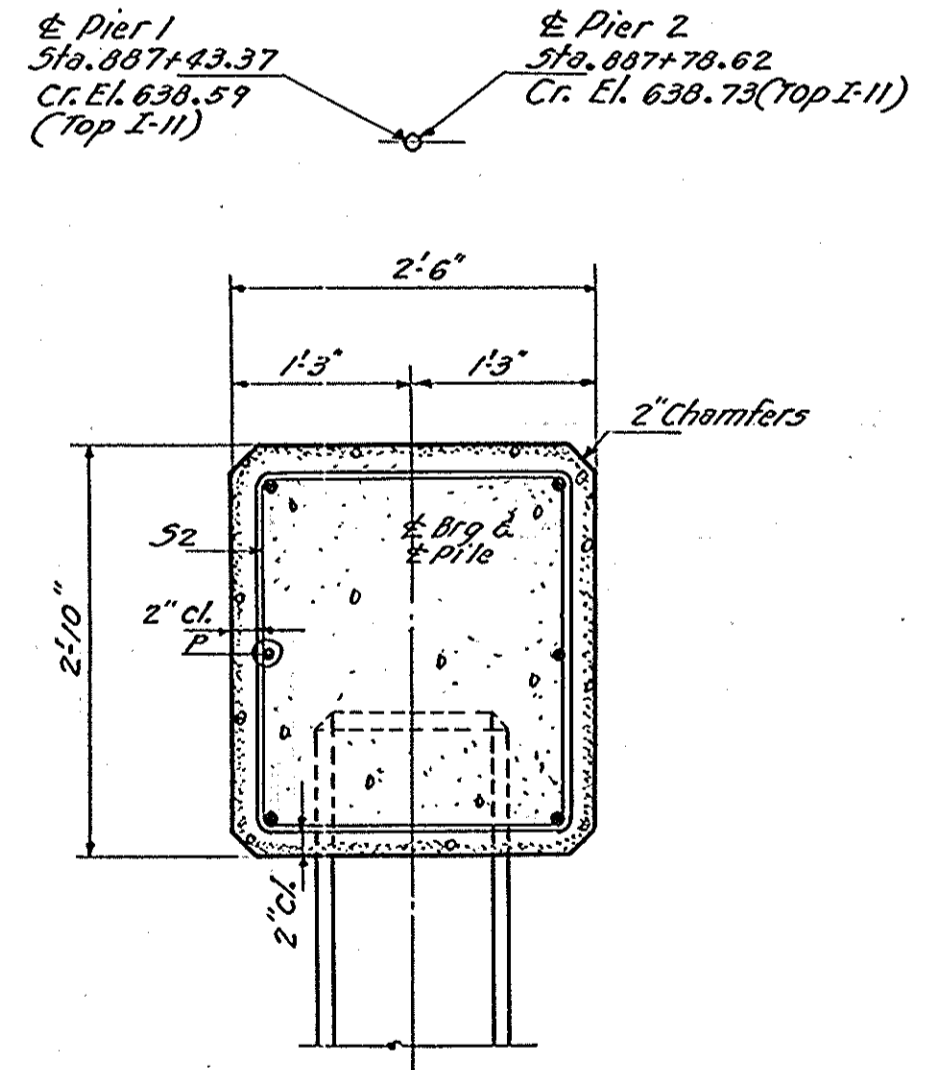
Piles in Piers 1 & 2  
34 Ton Capacity  
Est. Length 45'  
7 Req'd. each pier



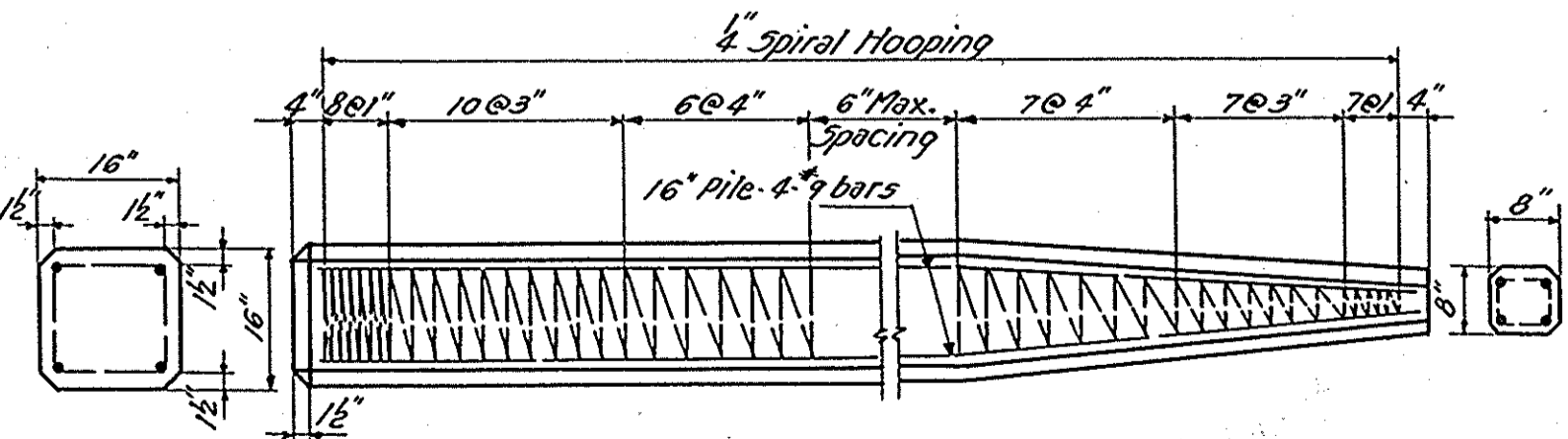
**PLAN PIER 2**



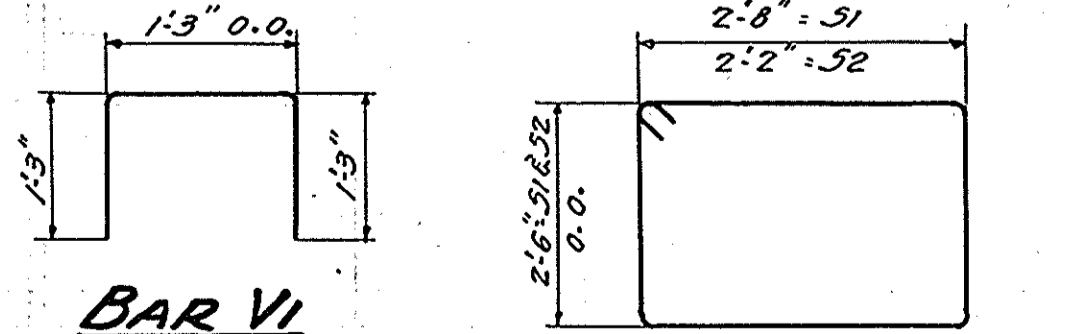
**SECTION A-A**



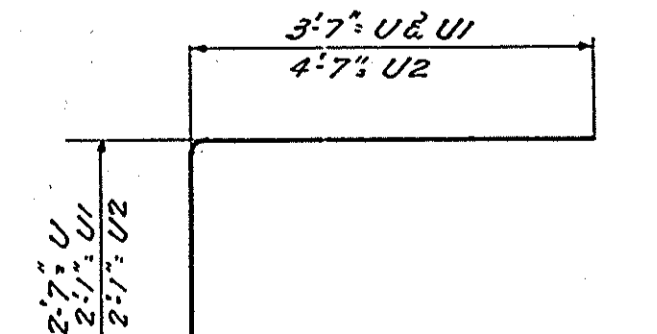
**SECTION B-B**



**DETAIL OF PRECAST CONCRETE PILES**



**BAR VI**



**BARS U-U1-U2**

**BILL OF MATERIAL**

Bar	No.	Size	Length	Shape
h	4	1/4"	29'-6"	—
h1	24	1/4"	4'-6"	—
h2	32	1/4"	7'-3"	—
V	148	1/4"	3'-6"	—
V1	48	1/4"	3'-9"	—
V2	16	1/4"	3'-9"	—
V3	16	1/4"	5'-9"	—
P	24	1/2"	36'-3"	—
P1	4	1/2"	5'-0"	—
S1	62	1/2"	11'-0"	—
S2	68	1/2"	10'-0"	—
U	16	1/2"	9'-9"	—
U1	8	1/2"	9'-3"	—
U2	8	1/2"	11'-3"	—
Class-X Concrete			Cu. Yds.	48.5
Reinforcement Bars			Lbs.	4080
Precast Conc. Piles (90'lg.)			Lin. Ft.	440
Precast Conc. Piles (45'lg.)			Lin. Ft.	585
Test Piles			Each	2

DESIGNED *Carl E. Thummett*  
CHECKED *B. Sarman*  
DRAWN *C. E. Miller*  
CHECKED *B. Sarman*

May 15 1953  
EXAMINED *W. E. Hanson*  
PASSED *E. L. ...*  
APPROVED *J. N. ...*

**SUBSTRUCTURE**  
S. B. Rt. 2 - SEC. 7-B-R  
BUREAU COUNTY  
STA. 887+61