

079

F.A.P. RTE.	SECTION	COUNTY	TOTAL SHEETS	SHEET NO.
63.315	D6 BRIDGE CLEANING 2017-	-	6	1
- ADAMS & HANCOCK ILLINOIS		CONTRACT NO. 72K03		

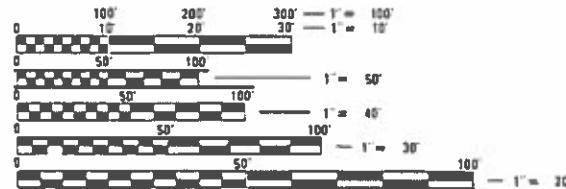
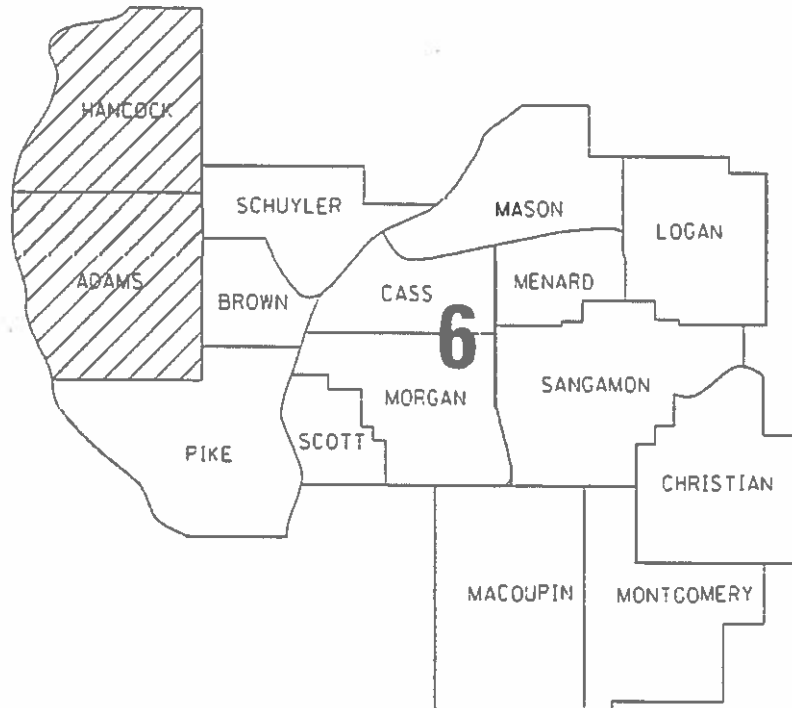
STATE OF ILLINOIS
DEPARTMENT OF TRANSPORTATION
DIVISION OF HIGHWAYS

**PROPOSED
HIGHWAY PLANS**

FAP 63 /63 1 (US 24) & FAP 315 (US 136)
SECTION D6 BRIDGE CLEANING 2017-3
PROJECT NHPP-WW9F(239)
BRIDGE WASHING
ADAMS & HANCOCK COUNTIES

C-96-067-17

FOR INDEX OF SHEETS, SEE SHEET NO. 2



FULL SIZE PLANS HAVE BEEN PREPARED USING STANDARD ENGINEERING SCALES. REDUCED SIZED PLANS WILL NOT CONFORM TO STANDARD SCALES. IN MAKING MEASUREMENTS ON REDUCED PLANS, THE ABOVE SCALES MAY BE USED.

J.U.L.I.E.
JOINT UTILITY LOCATION INFORMATION FOR EXCAVATION
1-800-892-0123
OR 811

BRIDGE MAINTENANCE ENGINEER: BRANDON DUDLEY, 217-785-9290

GROSS LENGTH = x.xx FT. = x.xxx MILE
NET LENGTH = x.xx FT. = x.xxx MILE

CONTRACT NO. 72K03

STATE OF ILLINOIS
DEPARTMENT OF TRANSPORTATION
DIVISION OF HIGHWAYS

SUBMITTED 12 October 2018
[Signature]
REGION FOUR ENGINEER

Dec 7 2018
[Signature]
ENGINEER OF DESIGN AND ENVIRONMENT

Dec 7 2018
[Signature]
DIRECTOR OF HIGHWAYS PROJECT IMPLEMENTATION

PRINTED BY THE AUTHORITY
OF THE STATE OF ILLINOIS

INDEX OF SHEETS

- 1 COVER SHEET
- 2 INDEX, STANDARDS, GENERAL NOTES, & SIGNATURES
- 3 SUMMARY OF QUANTITIES
- 4-6 LOCATION MAPS AND BRIDGE PLANS

STANDARDS

- 000001-07
- 001006
- 701101-05
- 701106-02
- 701601-09
- 701901-08

GENERAL NOTES:

BRIDGE #1 - SN 001-0019: US 24 (EB) AND MAINE STREET OVER THE MISSISSIPPI RIVER AT THE WEST EDGE OF QUINCY IN ADAMS COUNTY. SEE TRUSS AND MULTI BEAM OR APPROACH SPAN NOTES BELOW.

BRIDGE #2 - SN 001-0068: US 24 (WB) AND MAINE STREET OVER THE MISSISSIPPI RIVER AT THE WEST EDGE OF QUINCY IN ADAMS COUNTY. SEE MULTI BEAM OR APPROACH SPAN NOTES BELOW.

BRIDGE #3 - SN 034-0062: US 136 OVER THE MISSISSIPPI RIVER AT THE EAST EDGE OF KEOKUK, IA ADAMS COUNTY. SEE MULTI BEAM OR APPROACH SPAN NOTES BELOW.

ALL BRIDGE WASHING SHALL BE PERFORMED IN ACCORDANCE WITH ARTICLE 592 OF THE STANDARD SPECS AND AS OUTLINED BELOW:

- TRUSS SPANS - THE AREAS OF TRUSS SPANS TO BE WASHED SHALL INCLUDE THE FOLLOWING:
- ALL STRUCTURAL STEEL INCLUDING LOWER CHORD TO A POINT OF 10' ABOVE THE BRIDGE DECK
 - THE ENTIRE DECK SURFACE, CURBS, JOINTS, DRAINS, AND RAILINGS
 - ALL FLOOR BEAMS, DIAGONAL BRACING, STRINGERS, AND OTHER STRUCTURAL STEEL FROM THE LOWER CHORD INWARD TO AND INCLUDING THE OUTSIDE AND BOTTOM OF EXTERIOR STRINGERS
 - ALL ABUTMENT AND PIER CAPS
 - ALL STRUCTURAL STEEL LOCATED BELOW THE DECK WITHIN 10' LONGITUDINALLY ON EITHER SIDE OF ALL EXPANSION JOINTS OR DEFLECTION JOINTS

- MULTI BEAM OR APPROACH SPANS - THE AREAS TO BE WASHED ON MULTI BEAM SPANS OR APPROACH SPANS SHALL INCLUDE THE FOLLOWING:
- ALL DECK JOINTS AND DECK DRAINS
 - THE ENTIRE DECK SURFACE, CURBS, RAILINGS, AND SIDEWALKS
 - THE OUTSIDE AND BOTTOMS OF FASCIA BEAMS
 - ALL ABUTMENT AND PIER CAPS
 - ALL STRUCTURAL STEEL LOCATED BELOW THE DECK WITHIN 10' LONGITUDINALLY ON EITHER SIDE OF ALL EXPANSION JOINTS OR DEFLECTION JOINTS

- CABLE-STAYED SPANS - THE AREAS TO BE WASHED ON CABLE-STAYED SPANS SHALL INCLUDE THE FOLLOWING:
- ALL DECK JOINTS AND DECK DRAINS
 - THE ENTIRE DECK SURFACE, CURBS, RAILINGS, AND DECK PORTIONS BEHIND THE PARAPET.
 - THE OUTSIDE AND BOTTOMS OF FASCIA BEAMS
 - ALL PIER CAPS
 - ALL STRUCTURAL STEEL LOCATED BELOW THE DECK WITHIN 10' LONGITUDINALLY ON EITHER SIDE OF ALL EXPANSION JOINTS OR DEFLECTION JOINTS
 - ALL CABLES, CABLE ANCHORAGES, AND SUPPORT TOWERS UP TO A HEIGHT OF 10' ABOVE THE DECK SURFACE

STATE OF ILLINOIS
DEPARTMENT OF TRANSPORTATION
DIVISION OF HIGHWAYS
DISTRICT 6

EXAMINED August 23rd 20 18
John C. Cunningham
ENGINEER OF OPERATIONS

EXAMINED August 28th 20 18
Steve D. Johnson
ENGINEER OF PROJECT IMPLEMENTATION

EXAMINED September 17 20 18
Jeffrey P. Myers
ENGINEER OF PROGRAM DEVELOPMENT

MOBILE: 633.3153
 FAX: 633.3153
 633.3153

REV. - MS

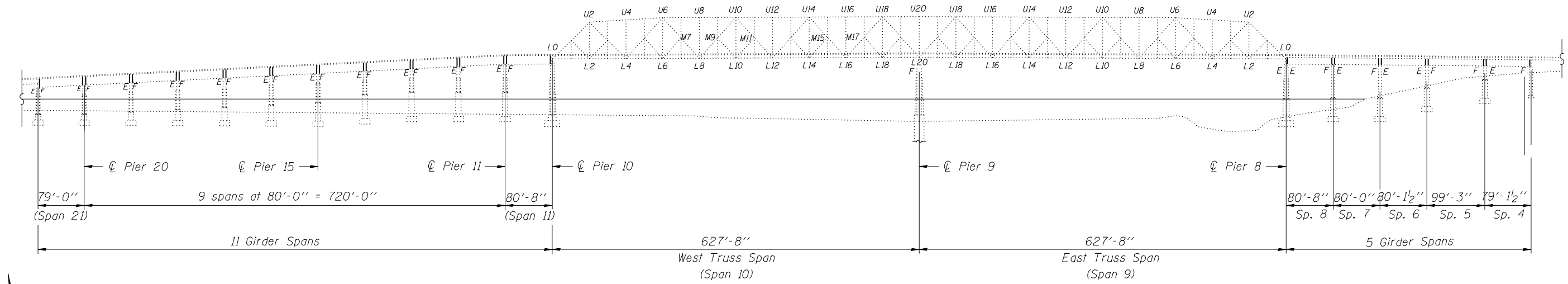
USLR FILE# = 0001001	DESIGNED -	REVISED -	STATE OF ILLINOIS DEPARTMENT OF TRANSPORTATION	INDEX OF SHEETS, GENERAL NOTES, & SIGNATURES	F.A.P. RTE.	SECTION	COUNTY	TOTAL SHEETS	SHEET NO.	
PLOT SCALE = 220.0000' = 1" = 100'	DRAWN -	REVISED -			63.315	D6 BRIDGE CLEANING 2017-2	+	6	2	
PLOT DATE = 10/3/2018	CHECKED -	REVISED -			ADAMS & HANCOCK		CONTRACT NO. 72K03			
	DATE -	REVISED -			ILLINOIS		FED. AID PROJECT			
SCALE:				SHEET	OF	SHEETS	STA.	TO STA.		

CODE NO.	ITEM	UNIT	TOTAL QUANTITY	80% FED 20% STATE		80% FED 20% STATE	
				6-00288-1400	6-00288-1400	6-00288-1400	6-00288-1400
				100% MISSOURI	100% IOWA	NHPP	NHPP
				BRIDGE-URBAN 0047	BRIDGE-RURAL 0047	BRIDGE-URBAN 0047	BRIDGE-RURAL 0047
				MISSOURI/ADAMS	IOWA/HANCOCK	ILLINOIS/ADAMS	ILLINOIS/HANCOCK
59200101	BRIDGE WASHING NO. 1	EACH	1	0.5	0	0.5	0
59200102	BRIDGE WASHING NO. 2	EACH	1	0.5	0	0.5	0
59200103	BRIDGE WASHING NO. 3	EACH	1	0	0.5	0	0.5
67100100	MOBILIZATION	L SUM	1	0.33	0.17	0.33	0.17
70102630	TRAFFIC CONTROL AND PROTECTION, STANDARD 701601	L SUM	1	0.33	0.17	0.33	0.17

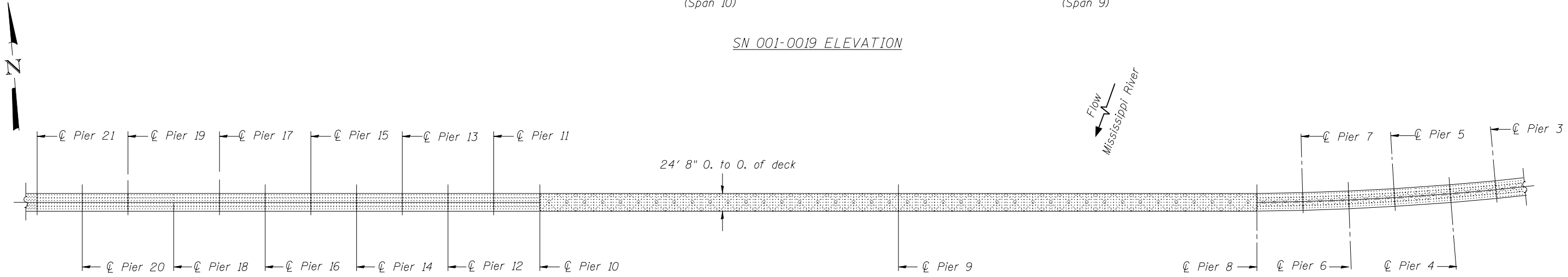
MODEL: Default
 FILE NAME: C:\OPERATIONS\Bridges\BridgesPlans_CAD\172K03 - Miss R. Washing_2018\plan sheet.dgn

REV. - MS

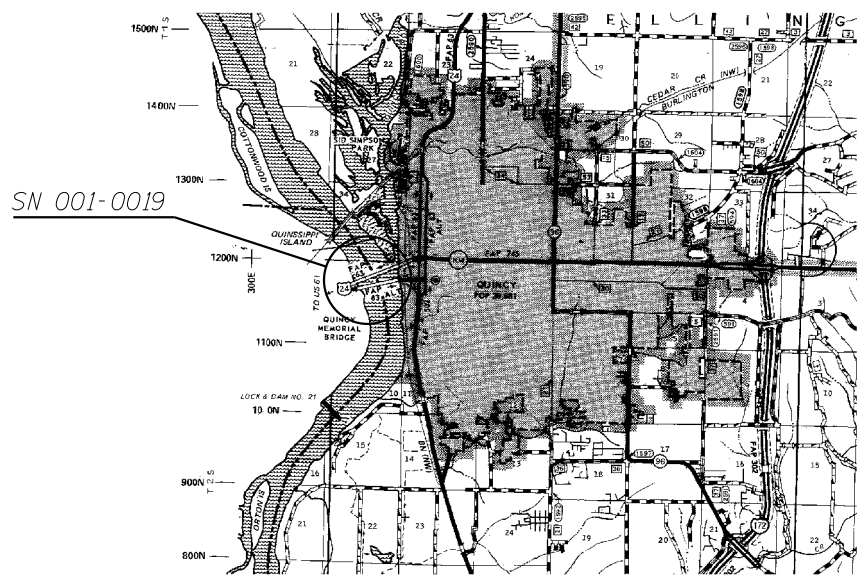
USER NAME = dudleybm PLOT SCALE = 220.0000 ' / in. PLOT DATE = 10/5/2018	DESIGNED - DRAWN - CHECKED - DATE -	REVISED - REVISED - REVISED - REVISED -	STATE OF ILLINOIS DEPARTMENT OF TRANSPORTATION	SUMMARY OF QUANTITIES	F.A.P. RTE. 63,315 SECTION 06 BRIDGE CLEANING 2017-3 COUNTY * CONTRACT NO. 72K03 ILLINOIS FED. AID PROJECT
			SCALE:	SHEET OF SHEETS	STA. TO STA.



SN 001-0019 ELEVATION



SN 001-0019 PLAN



LOCATION MAP

MODEL: Default
 FILE: \\msc\c\OPERATIONS\Bridges\BridgesPlans_CAD\72K03 - Miss R. Washburn_2019\planhect.dgn

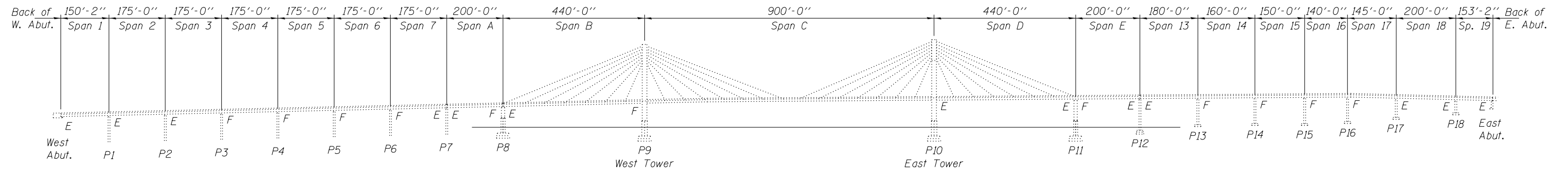
USER NAME = dudleybm	DESIGNED -	REVISED -
	DRAWN -	REVISED -
PLOT SCALE = 220,0000' / in.	CHECKED -	REVISED -
PLOT DATE = 10/5/2018	DATE -	REVISED -

STATE OF ILLINOIS
DEPARTMENT OF TRANSPORTATION

BRIDGE PLAN & LOCATION MAP
SN 001-0019

SCALE: SHEET OF SHEETS STA. TO STA.

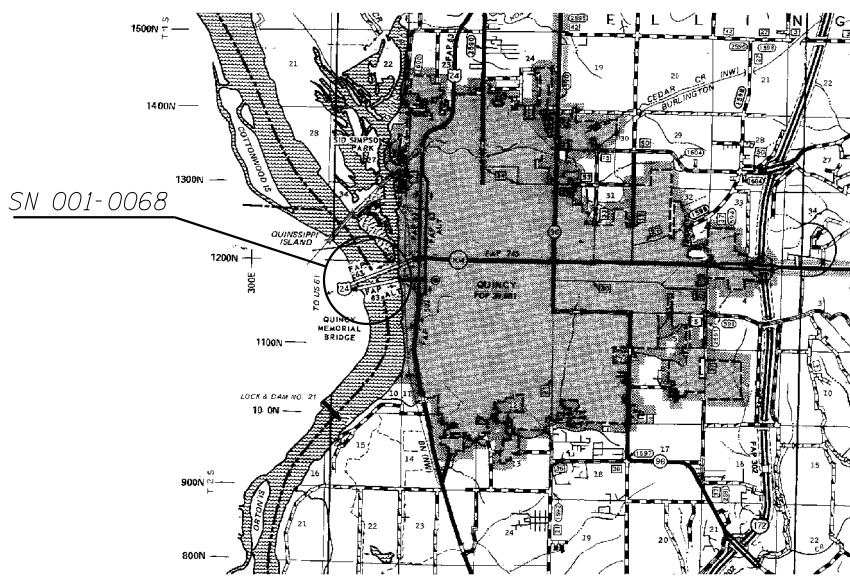
F.A.P. RTE.	SECTION	COUNTY	TOTAL SHEETS	SHEET NO.
63,315	D6 BRIDGE CLEANING 2017-3	*	6	4
ADAMS & HANCOCK			CONTRACT NO. 72K03	
ILLINOIS FED. AID PROJECT				



SN 001-0068 ELEVATION



SN 001-0068 PLAN



LOCATION MAP

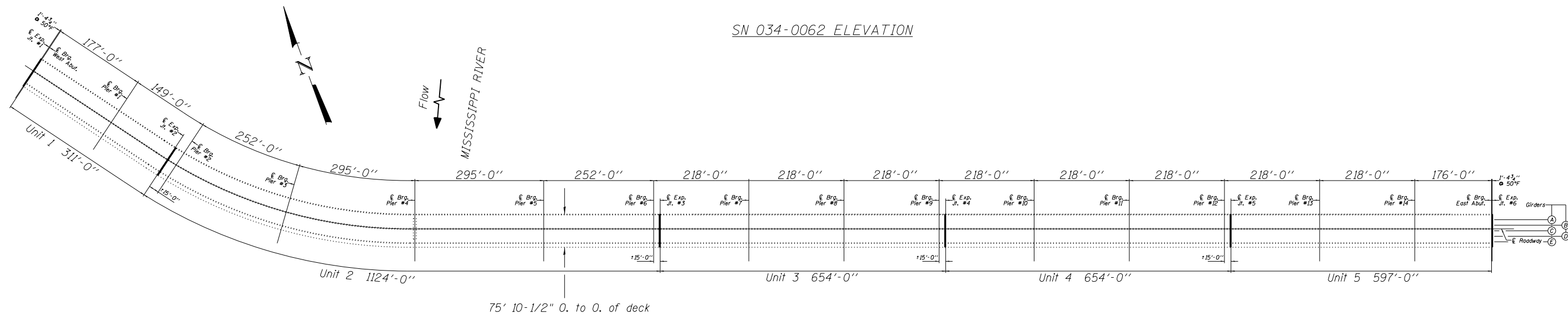
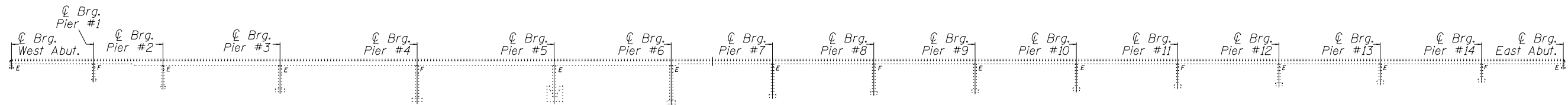
MODEL: Default
 FILE: \\nas01.csc.state.il.us\projects\bridge\bridgeplans_CAD\72K03 - Miss R. Washburn_2019\plan\sheet.dwg

USER NAME = dudleybm	DESIGNED -	REVISED -
	DRAWN -	REVISED -
PLOT SCALE = 220,0000' / in.	CHECKED -	REVISED -
PLOT DATE = 10/5/2018	DATE -	REVISED -

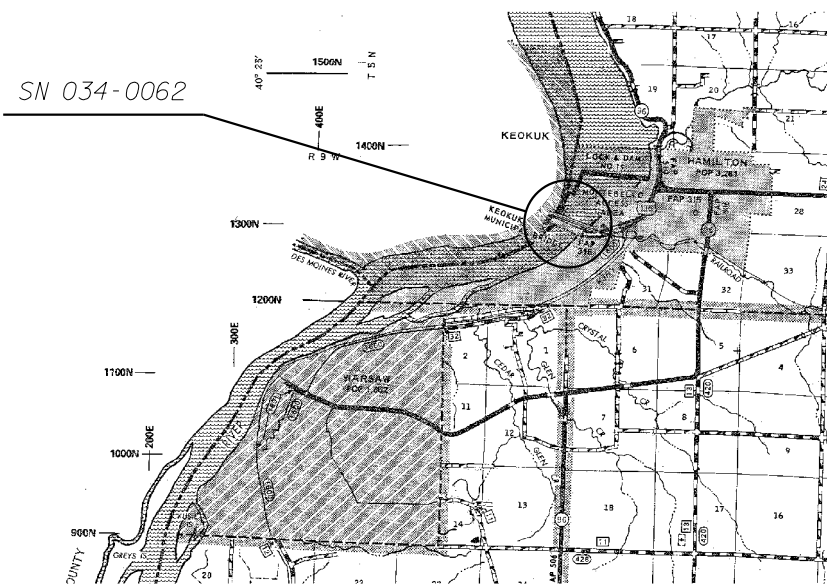
STATE OF ILLINOIS
DEPARTMENT OF TRANSPORTATION

BRIDGE PLAN & LOCATION MAP			
SN 001-0068			
SCALE:	SHEET	OF SHEETS	STA. TO STA.

F.A.P. RTE.	SECTION	COUNTY	TOTAL SHEETS	SHEET NO.
63,315	D6 BRIDGE CLEANING 2017-3	*	6	5
• ADAMS & HANCOCK			CONTRACT NO. 72K03	
ILLINOIS		FED. AID PROJECT		



SN 034-0062 PLAN



LOCATION MAP

MODEL: Default
 FILE: \\msbpc\c0\OPERATIONS\Bridges\Bridges\plans_CAD\172K03 - Miss R. Washbrg_2019\plan\sheet.dwg

USER NAME = dudleybm	DESIGNED -	REVISED -
	DRAWN -	REVISED -
PLOT SCALE = 220,0000' / in.	CHECKED -	REVISED -
PLOT DATE = 10/5/2018	DATE -	REVISED -

STATE OF ILLINOIS
DEPARTMENT OF TRANSPORTATION

BRIDGE PLAN & LOCATION MAP
SN 034-0062

SCALE: SHEET OF SHEETS STA. TO STA.

F.A.P. RTE.	SECTION	COUNTY	TOTAL SHEETS	SHEET NO.
63,315	D6 BRIDGE CLEANING 2017-3	*	6	6
• ADAMS & HANCOCK			CONTRACT NO. 72K03	
ILLINOIS FED. AID PROJECT				