

096

STATE OF ILLINOIS  
DEPARTMENT OF TRANSPORTATION

F.A.I. RTE.	SECTION	COUNTY	TOTAL SHEETS	SHEET NO.
1	2018-024-1		* 177	1
ILLINOIS CONTRACT NO. 62G66				
DUPAGE & WILL COUNTIES			* 177 + 3 = 180 TOTAL PAGES	
D-91-327-18				

FOR INDEX OF SHEETS, SEE SHEET NO. 2

IMPROVEMENT IS LOCATED IN  
THE CITY OF JOLIET AND  
VILLAGES OF CHANNAHON, SHOREWOOD,  
MINOOKA, & ADDISON

DESIGN DESIGNATION: INTERSTATE  
(I-80)

2017 ADT = 60,100-69,500  
DESIGN SPEED = 55-65 MPH  
POSTED SPEED = 55-65 MPH

DESIGN DESIGNATION: INTERSTATE  
(I-55)

2017 ADT = 63,900-86,600  
DESIGN SPEED = 65 MPH  
POSTED SPEED = 65 MPH

DESIGN DESIGNATION: INTERSTATE  
(I-290)

2017 ADT = 151,500  
DESIGN SPEED = 55 MPH  
POSTED SPEED = 55 MPH



FULL SIZE PLANS HAVE BEEN PREPARED USING STANDARD  
ENGINEERING SCALES. REDUCED SIZED PLANS WILL NOT  
CONFORM TO STANDARD SCALES. IN MAKING MEASUREMENTS  
ON REDUCED PLANS, THE ABOVE SCALES MAY BE USED.

J.U.L.I.E.  
JOINT UTILITY LOCATION INFORMATION FOR EXCAVATION  
1-800-892-0123  
OR 811

PROJECT ENGINEER: DAN WILGREEN, PE, (847)705-4240  
PROJECT MANAGER: FAWAD AQUEEL, PE, PTOE, (847)705-4247

CONTRACT NO. 62G66

PROPOSED  
HIGHWAY PLANS

VARIOUS ROUTES  
(FAI 55 (I-55), FAI 80 (I-80) & FAI 290 (I-290))  
SECTION: 2018-024-1  
AT VARIOUS LOCATIONS  
PROJECT: NHPP-PHWE(465)  
DYNAMIC MESSAGE SIGN (DMS)  
INSTALLATION & SURVEILLANCE DUPAGE  
& WILL COUNTIES  
C-91-250-18

FOR LOCATION MAP SEE SHEET NO. 3



DATE SIGNED: 10-11-2018  
EXP. DATE: 11-30-2019  
SHEET NUMBERS: 44-138



DATE SIGNED: 10-11-2018  
EXP. DATE: 11-30-2019  
SHEET NUMBERS: 1-43 & 168-177

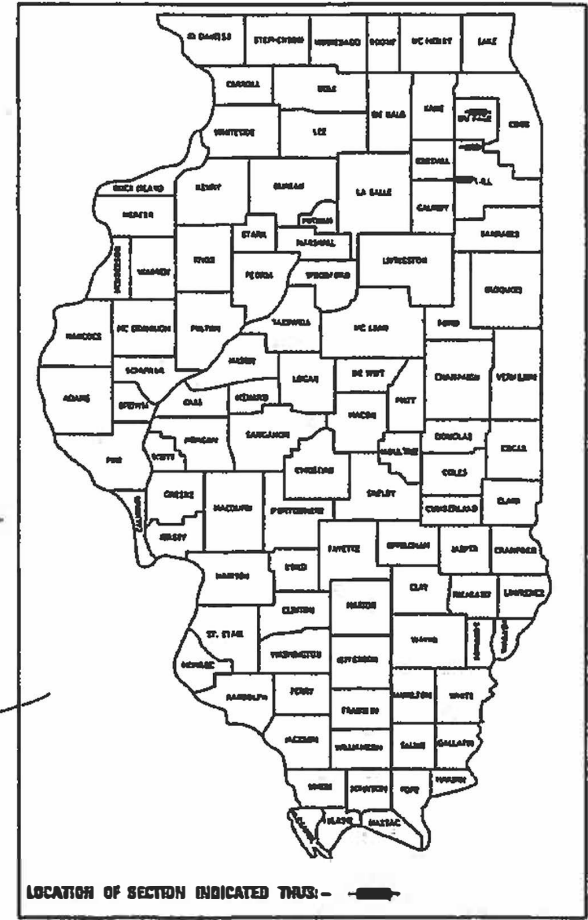


DATE SIGNED: 10/12/2018  
EXP. DATE: 11/30/2019  
SHEET NUMBERS: 154-167



Signed: Monisa A. Issa  
Dr. Monisa A. Issa, SE, Ill. Lic. No. 081-005270  
Expires 11-30-2020

Date: 10/11/2018  
SHEET NUMBERS: 139-153



STATE OF ILLINOIS  
DEPARTMENT OF TRANSPORTATION

SUBMITTED: October 2018

Dan Wilgreen REGIONAL ENGINEER

Monisa A. Issa ENGINEER OF DESIGN AND ENVIRONMENT

Dan Wilgreen DIRECTOR OF HIGHWAYS PROJECT IMPLEMENTATION

PRINTED BY THE AUTHORITY  
OF THE STATE OF ILLINOIS

Accurate  
GROUP, INC.

WWW.ACCGI.COM  
101 SCHELTER RD., SUITE B-200  
LINCOLNSHIRE, ILLINOIS 60068  
T (847) 613-1100 F (847) 613-1110  
ILLINOIS PROFESSIONAL DESIGN FIRM NO. 184.0020 3

## INDEX OF SHEETS

SHEET NO.	DESCRIPTION
1	COVER SHEET
2	INDEX OF SHEETS, HIGHWAY STANDARDS, GENERAL NOTES, AND COMMITMENTS
3	DMS LOCATION MAP
4-11	SUMMARY OF QUANTITIES
12-18	PROPOSED ROADSIDE RESTORATION
19	MAINTENANCE OF TRAFFIC GENERAL NOTES
20-22	MAINTENANCE OF TRAFFIC TYPICAL SECTIONS
23-31	MAINTENANCE OF TRAFFIC
32	EROSION AND SEDIMENT CONTROL NOTES
33-49	EROSION AND SEDIMENT CONTROL PLAN
40-41	EROSION AND SEDIMENT CONTROL DETAILS
42-43	PAVEMENT MARKINGS
44	ITS GENERAL NOTES, LEGENDS AND ABBREVIATIONS
45	SUMMARY OF ITS QUANTITIES
46	DYNAMIC MESSAGE SITE PLAN, I-80 EB, MP 123.5 WEST OF SHEPLEY ROAD
47	DYNAMIC MESSAGE SITE PLAN, I-80 EB, MP 129, WEST OF LARKIN AVE
48	DYNAMIC MESSAGE SITE PLAN, I-80 WB, MP 131.2, EAST OF LARKIN AVE
49	DYNAMIC MESSAGE SITE PLAN, I-55 SB, MP 247.5 AT WEST SUMMIT ROAD
50	DYNAMIC MESSAGE SITE PLAN, I-55 SB, MP 255.2 AT HARRIS DRIVE
51	DYNAMIC MESSAGE SITE PLAN, I-290 EB, MP 8.0 AT MILL ROAD (1 OF 2)
52	DYNAMIC MESSAGE SITE PLAN, I-290 EB, MP 8.0 AT MILL ROAD (2 OF 2)
53	DYNAMIC MESSAGE SITE PLAN, I-80 WB, MP 136 AT CHERRY HILL ROAD
54	CAMERA SITE PLAN, I-80 EB, AT CHERRY HILL ROAD
55-75	PROPOSED ITS PLAN-FIBER OPTIC BACKBONE
76-77	PROPOSED ITS PLAN FIBER OPTIC BACKBONE FOR CHERRY HILL DMS
78	DYNAMIC MESSAGE SIGN SINGLE LINE DIAGRAM
79-81	I-80 (FROM SHEPLEY RD TO MIDLAND AVE) FIBER OPTIC SINGLE LINE DIAGRAM
82	I-80 (FROM CHERRY HILL RD TO US 30) FIBER OPTIC SINGLE LINE DIAGRAM
83	DMS COMMUNICATION CABINET DETAILS
84	DYNAMIC MESSAGE SIGN GROUNDING DETAILS
85	DMS SIGN POWER CABINET DETAILS
86	ELECTRIC SERVICE INSTALLATION, AERIAL, REMOTE DISCONNECT
87	ELECTRICAL SERVICE PEDESTAL MOUNT DETAILS
88	CCTV CAMERA STRUCTURE, 50' MOUNTING HEIGHT (BE-1000)
89	CCTV CAMERA STRUCTURE FOUNDATION 50' MOUNTING HEIGHT (BE-1001)
90	COMMUNICATIONS VAULT, COMPOSITE CONCRETE
91	CONDUIT TRANSITION DETAIL
92	CABINET, MODEL 334 AND FOUNDATION DETAIL
93	PCC-HEAVY DUTY HANDHOLE
94-121	PROPOSED BLUETOOTH DETECTOR PLAN
122-126	BLUETOOTH DETECTOR REMOVAL PLAN
127	PROPOSED ITS PLAN FIBER OPTIC BACKBONE
128-134	BLUETOOTH DETECTOR REMOVAL PLAN
135	DISTRICT 1 DMS & BLUE TOOTH DETECTORS BLOCK DIAGRAM
136	BLUETOOTH DETECTOR LOCATION DETAIL AND SCHEDULES
137	LIGHT POLE FOUNDATION METAL (BE-305)
138	SOLAR POWERED BLUE TOOTH POLE DETAIL
139-167	DMS STRUCTURAL PLANS
168-171	BM-21 REMOVE AND REERECT STEEL PLATE BEAM GUARDRAIL
171A	TC-08 ENTRANCE AND EXIT RAMP CLOSURE DETAILS
172	TC-09 TRAFFIC CONTROL DETAILS FOR FREEWAY SINGLE & MULTI-LANE WEAVE
173	TC-10 TRAFFIC CONTROL AND PROTECTION FOR SIDE ROADS, INTERSECTIONS, AND DRIVEWAYS
174-175	TC-12 MULTI-LANE FREEWAY PAVEMENT MARKING DETAILS
176	TC-17 TRAFFIC CONTROL DETAILS FOR FREEWAY SHOULDER CLOSURES AND PARTIAL RAMP CLOSURES
176A	TC-18 SIGNING FOR FLAGGING OPERATIONS AT WORK ZONE OPENINGS
177	TC-22 ARTERIAL ROAD INFORMATION SIGN
177A	BD-27 CONCRETE BARRIER TRANSITION & GENERAL DETAILS, CONCRETE BARRIER BASE

## HIGHWAY STANDARDS

000001-07	STANDARD SYMBOLS, ABBREVIATIONS, AND PATTERNS
001001-02	AREAS OF REINFORCEMENT BARS
280001-07	TEMPORARY EROSION CONTROL SYSTEMS
542601-03	REINFORCED CONCRETE PIPE ELBOW 24", 30" OR 36"
601001-05	PIPE UNDERDRAINS
630001-12	STEEL PLATE BEAM GUARDRAIL
630001-02	PCC/HMA STABILIZATION AT STEEL PLATE BEAM GUARDRAIL
637006-03	CONCRETE BARRIER, DOUBLE FACE, 42 IN. (1065 mm) HEIGHT
642001-02	SHOULDER RUMBLE STRIPS 16 IN.
701101-05	OFF-RD OPERATIONS, MULTILANE, 15'(4.5m) TO 24'(600mm) FROM PAVEMENT EDGE
701106-02	OFF-ROAD OPERATIONS, MULTILANE, MORE THAN 15' (4.5 m) AWAY
701201-05	LANE CLOSURE, 2L, 2W, DAY ONLY, FOR SPEEDS > 45MPH
701301-04	LANE CLOSURE, 2L, 2W, SHORT TIME OPERATIONS
701311-03	LANE CLOSURE 2L, 2W, MOVING OPERATIONS-DAY ONLY
701400-09	APPROACH TO LANE CLOSURE, FREEWAY/ EXPRESSWAY
701401-12	LANE CLOSURE, FREEWAY/EXPRESSWAY
701411-09	LANE CLOSURE, MULTILANE, AT ENTRANCE OR EXIT RAMP, FOR SPEEDS ≥ 45 MPH
701428-01	TRAFFIC CONTROL SETUP AND REMOVAL FREEWAY/EXPRESSWAY
701446-09	TWO LANE CLOSURE, FREEWAY/EXPRESSWAY
701901-08	TRAFFIC CONTROL DEVICES
704001-08	TEMPORARY CONCRETE BARRIER
725001-01	OBJECT AND TERMINAL MARKERS
782006	GUARDRAIL AND BARRIER WALL MOUNTING DETAILS
862001-01	UNINTERRUPTABLE POWER SUPPLY
878001-10	CONCRETE FOUNDATION DETAILS

## GENERAL NOTES

- SEVENTY-TWO (72) HOURS BEFORE STARTING EXCAVATION, THE CONTRACTOR SHALL CALL J.U.L.I.E. (JOINT UTILITY LOCATION INFO FOR EXCAVATION) AT (800) 892-0123 TO HAVE THE LOCATION OF EXISTING UNDERGROUND UTILITIES MARKED IN THE FIELD.
- EXISTING SURFACE DISTURBED DURING EXCAVATION FOR FOUNDATIONS AND PUSH PITS SHALL BE RESTORED TO THE LIMITS AND CONDITION SPECIFIED BY THE ENGINEER OR AS SHOWN ON THE PLANS. UNLESS NOTED OTHERWISE ON THE PLANS THE REMOVAL AND RESTORATION SHALL BE INCLUDED IN THE CONTRACT.
- UTILITIES ARE SHOWN IN ACCORDANCE WITH THE BEST AVAILABLE INFORMATION AND THEIR TRUE LOCATIONS ARE NOT GUARANTEED TO BE SHOWN IN THE PLANS.
- EXISTING UNDERGROUND AND ABOVE-GROUND FACILITIES, STRUCTURES, AND UTILITIES HAVE BEEN PLOTTED ON THESE CONTRACT DOCUMENTS BASED UPON THE INFORMATION AND SURVEYS AVAILABLE AT THE TIME OF DRAWING PREPARATION. THE LOCATION OF THESE FEATURES MUST, THEREFORE, BE CONSIDERED APPROXIMATE ONLY. IN ADDITION, THERE MAY BE OTHER FACILITIES, STRUCTURES, AND UTILITIES WHICH DID NOT EXIST OR THE EXISTENCE OF WHICH WAS NOT KNOWN AT THE TIME OF DRAWING PREPARATION. IT IS THE SOLE RESPONSIBILITY OF CONTRACTOR(S) TO HAVE ALL EXISTING FACILITIES, STRUCTURES, AND UTILITIES LOCATED IN THE FIELD PRIOR TO ANY EXCAVATION OR CONSTRUCTION ACTIVITY; AND TO PROTECT ALL SUCH EXISTING FEATURES DURING CONSTRUCTION.
- GRADING SHALL BE DONE BY HAND AROUND LIGHT POLES, UTILITY POLES, SIGN POSTS, TREES OR OTHER NATURAL OR MAN-MADE OBJECTS WHERE SHALLOW FILLS OR CUTS ARE ADJACENT TO THE ITEMS. IT IS THE INTENT THAT THE LIMITS OF CONSTRUCTION BE SUCH AS TO PRESERVE IN THE ORIGINAL STATE AS MUCH AS POSSIBLE. THE DECISION AS TO ITEMS TO REMAIN IN PLACE SHALL BE DIRECTED BY THE ENGINEER. THIS WORK WILL NOT BE PAID FOR SEPARATELY, BUT SHALL BE INCLUDED IN THE CONTRACT UNIT PRICE PER SQUARE YARD FOR GRADING AND SHAPING FORESLOPES AND NO ADDITIONAL COMPENSATION WILL BE ALLOWED. EARTHWORK COMPACTION SHALL BE TO THE SATISFACTION OF THE ENGINEER.
- SEEDING SHALL BE DONE ON ALL AREAS THAT ARE DISTURBED BY CONSTRUCTION OPERATIONS AS DIRECTED BY THE ENGINEER. SEEDING SHALL BE PAID FOR ONLY WITHIN THE PROPOSED CONSTRUCTION LIMITS, RIGHT-OF-WAY, OR EASEMENT LIMITS. ALL AREAS DISTURBED BY THE CONTRACTOR OUTSIDE THE PROPOSED CONSTRUCTION LIMITS SHALL BE SEEDED, AS DIRECTED BY THE ENGINEER, AT THE CONTRACTOR'S EXPENSE.
- IT SHALL BE THE CONTRACTOR'S RESPONSIBILITY TO VERIFY ALL EXISTING FIELD DIMENSIONS AND CONDITIONS PRIOR TO ORDERING MATERIALS AND THE BEGINNING OF CONSTRUCTION.
- THE CONTRACTOR WILL CONTACT DISTRICTS 1 AND 3 FOR LOCATING UTILITIES ADJACENT TO DISTRICT 3 IN DUPAGE AND WILL COUNTIES TO ENSURE SYSTEM CONTINUITY BETWEEN BOTH DISTRICTS.
- THE CONTRACTOR SHALL CONTACT THE DISTRICT 1 TRAFFIC CONTROL SUPERVISOR A MINIMUM OF 72 HOURS IN ADVANCE OF BEGINNING WORK.
- THE CONTRACTOR SHALL REQUEST AND GAIN APPROVAL FROM THE ILLINOIS DEPARTMENT OF TRANSPORTATION'S DISTRICT ONE EXPRESSWAY TRAFFIC OPERATIONS ENGINEER AT [WWW.IDOTILCS.COM](http://WWW.IDOTILCS.COM) TWENTY-FOUR (24) HOURS IN ADVANCE OF ALL DAILY LANES, RAMPS, AND SHOULDER CLOSURES. PLEASE REGISTER AN ACCOUNT AT [WWW.IDOTILCS.COM](http://WWW.IDOTILCS.COM) TO ENTER LANE CLOSURE REQUESTS.
- THE CONTRACTOR WILL NOT BE ALLOWED TO SET UP A YARD OR FIELD OFFICE ON STATE PROPERTY WITHOUT WRITTEN PERMISSION FROM THE DEPARTMENT.
- THE REMOVAL OF GUARDRAIL TERMINAL SECTIONS SHALL BE INCLUDED IN THE UNIT PRICE PER FOOT FOR "GUARDRAIL REMOVAL".
- BEFORE BEGINNING ANY WORK, THE CONTRACTOR SHALL RETAIN AND RECORD FOR FUTURE REFERENCE, ALL EXISTING PAVEMENT MARKING LINES (AND RAISED REFLECTIVE PAVEMENT MARKERS) IN ORDER THAT THESE LOCATIONS CAN BE RE-ESTABLISHED FOR STRIPING. EXACT LOCATIONS OF ALL PAVEMENT MARKINGS SHALL BE AS DIRECTED BY THE ENGINEER.
- ALL DAMAGE TO EXISTING PAVEMENT MARKINGS OR RAISED REFLECTIVE PAVEMENT MARKERS OUTSIDE THE REMOVAL LINE SHOWN ON THE PLANS SHALL BE REPLACED AT NO ADDITIONAL COST TO THE DEPARTMENT.
- MEADE ELECTRIC COMPANY, THE IDOT DISTRICT ONE ELECTRICAL MAINTENANCE CONTRACTOR, LOCATES IDOT ELECTRICAL EQUIPMENT AND UNDERGROUND CABLES. CALL 773-287-7672.
- THE COST OF CONNECTING EXISTING STORM SEWERS TO THE PROPOSED DRAINAGE SYSTEM AND/OR CONNECTING PROPOSED STORM SEWER TO EXISTING STRUCTURES SHALL BE CONSIDERED INCLUDED IN THE COST OF THE PROPOSED STORM SEWER. ALL NECESSARY ADDITIONAL PIPE USED WILL BE PAID FOR AT THE CONTRACT UNIT PRICE FOR THE STORM SEWER OF THE SIZE REQUIRED.
- ALL PIPE UNDERDRAINS SHALL BE PLACED AT A DEPTH OF 30" BELOW THE TOP OF THE PROPOSED PAVEMENT OR AS DEEP AS POSSIBLE IN ACCORDANCE WITH SECTION 601 OF THE STANDARD SPECIFICATIONS. THE COST OF MAKING PIPE UNDERDRAIN CONNECTIONS TO DRAINAGE STRUCTURES SHALL BE INCLUDED IN THE COST OF THE PIPE UNDERDRAIN ITEM.
- TWO WEEKS PRIOR TO THE PLACEMENT OF PERMANENT PAVEMENT MARKINGS, THE ENGINEER SHALL CONTACT MATTHEW DAEDA, EXPRESSWAYS AREA TRAFFIC FIELD ENGINEER, AT MATTHEW.DAEDA@ILLINOIS.GOV

## COMMITMENTS

NONE.

• I-55, I-80 & I-290

FILE NAME = Q:\Engineering\LiveProjects\13038 IDOT DUR Work Order 16-62066\CADD\CADD Sheets\Civil\162066-shr-Notes.dgn



USER NAME = johnn	DESIGNED - JMT	REVISED - 12/18/2018 LRC
	DRAWN - JN	REVISED -
PLOT SCALE = 2.0000' / in.	CHECKED - TGM	REVISED -
PLOT DATE = 12/18/2018	DATE - 10/17/2018	REVISED -

STATE OF ILLINOIS  
DEPARTMENT OF TRANSPORTATION

INDEX OF SHEETS, STATE HIGHWAY STANDARDS,  
GENERAL NOTES AND COMMITMENTS  
I-55, I-80 AND I-290 DMS INSTALLATION

SCALE: 1"=50' SHEET OF SHEETS STA. TO STA.

F.A.I. RTE.	SECTION	COUNTY	TOTAL SHEETS	SHEET NO.
*	2018-024-I	WILL/DUPAGE	177	2
CONTRACT NO. 62066				
ILLINOIS FED. AID PROJECT				

URBAN

CONSTRUCTION CODE

90% FED  
10% STATE

CODE NO.	ITEM	UNIT	TOTAL QUANTITY	MINOR STRUCTURES	MINOR STRUCTURES	MINOR STRUCTURES	MINOR STRUCTURES	MINOR STRUCTURES	MINOR STRUCTURES	MINOR STRUCTURES	NONE	NONE	NONE	
				0044	0044	0044	0044	0044	0044	0044	0044	0044	0044	0044
				SB: I-55 AT W. SUMMIT RD.	SB: I-55 AT HARRIS DR.	EB: I-80 AT W. SHEPLEY	WB: I-80 AT CHERRY HILL	EB: I-80 W. OF LARKIN	EB: I-80 E. OF LARKIN	EB: I-290 AT MILL ROAD	FIBER BACKBONE	ADDITIONAL CAMERAS	BLUETOOTH DEVICES	
44001980	CONCRETE BARRIER REMOVAL	FOOT	160		100						60			
54215979	REINFORCED CONCRETE PIPE ELBOW 24"	EACH	4		4									
54248510	CONCRETE COLLAR	CU YD	4		4									
550A0410	STORM SEWERS, CLASS A, TYPE 2 24"	FOOT	56		56									
60108206	PIPE UNDERDRAINS, TYPE 2, 6"	FOOT	56		56									
* 63000001	STEEL PLATE BEAM GUARDRAIL, TYPE A, 6 FOOT POSTS	FOOT	562.5	100	100	225				137.5				
* 63100045	TRAFFIC BARRIER TERMINAL, TYPE 2	EACH	3	1	1	1								
* 63100167	TRAFFIC BARRIER TERMINAL, TYPE 1 (SPECIAL) TANGENT	EACH	6	1	1	3				1				
63200310	GUARDRAIL REMOVAL	FOOT	38			25.5				12.5				
63301210	REMOVE AND REERECT STEEL PLATE BEAM GUARDRAIL, TYPE A	FOOT	150	100							50			
63700175	CONCRETE BARRIER, SINGLE FACE, 42 INCH HEIGHT	FOOT	60								60			
63700180	CONCRETE BARRIER, SINGLE FACE, 44 INCH HEIGHT	FOOT	60								60			
63700275	CONCRETE BARRIER, DOUBLE FACE, 42 INCH HEIGHT	FOOT	100		100									
63700280	CONCRETE BARRIER, DOUBLE FACE, 44 INCH HEIGHT	FOOT	100		100									
63700900	CONCRETE BARRIER BASE	FOOT	160		100						60			
64200116	SHOULDER RUMBLE STRIPS, 16 INCH	FOOT	3314		3314									

\* SPECIALTY ITEM

NOTE:  
ALL MINOR STRUCTURES ARE LOCATED IN WILL COUNTY  
WITH THE EXCEPTION OF EB I-290 AT MILL ROAD  
WHICH IS LOCATED IN DUPAGE COUNTY.

• I-55, I-80 & I-290

FILE NAME = Q:\Engineering\LiveProjects\13038 IDOT DURWork Order \*16-62066\CADD\CADD Sheets\Civil\162066-ah-t-500.dgn



USER NAME = johnn	DESIGNED - LC	REVISED -
DRAWN - JN	REVISIONS -	
PLOT SCALE = 2.0000' / 1in.	CHECKED - JMT	REVISIONS -
PLOT DATE = 10/17/2018	DATE - 10/17/2018	REVISIONS -

STATE OF ILLINOIS  
DEPARTMENT OF TRANSPORTATION

SUMMARY OF QUANTITIES			
I-55, I-80 AND I-290 DMS INSTALLATION			
SCALE: 1"=50'	SHEET	OF SHEETS	STA. TO STA.

F.A.I. RTE.	SECTION	COUNTY	TOTAL SHEETS	SHEET NO.
*	2018-024-1	WILL/DUPAGE	177	5
CONTRACT NO. 62066				
ILLINOIS FED. AID PROJECT				

FILE NAME = Q:\Engineering\LiveProjects\13038 IDOT DUR Work Order - 16-62066\CADD\CADD Sheets\16-62066-ah-t-500.dgn

CODE NO.	ITEM	UNIT	TOTAL QUANTITY	CONSTRUCTION CODE									NONE 0044	NONE 0044	NONE 0044	
				MINOR STRUCTURES 0044	MINOR STRUCTURES 0044	MINOR STRUCTURES 0044	MINOR STRUCTURES 0044	MINOR STRUCTURES 0044	MINOR STRUCTURES 0044	MINOR STRUCTURES 0044	MINOR STRUCTURES 0044	MINOR STRUCTURES 0044				
				SB: I-55 AT W. SUMMIT RD.	SB: I-55 AT HARRIS DR.	EB: I-80 AT W. SHEPLEY	WB: I-80 AT CHERRY HILL	EB: I-80 W. OF LARKIN	EB: I-80 E. OF LARKIN	EB: I-290 AT MILL ROAD	FIBER BACKBONE	ADDITIONAL CAMERAS				BLUETOOTH DEVICES
X8300001	LIGHT POLE, SPECIAL	EACH	28													28
X8570100	DISCONNECT SWITCH	EACH	2							1		1				
X8710036	FIBER OPTIC CABLE 12 FIBERS, SINGLE MODE	FOOT	5120	585	455	454	439	380	394		1631			782		
X8950130	MODIFY EXISTING LIGHTING CONTROLLER	EACH	2				1							1		
Z0013797	STABILIZED CONSTRUCTION ENTRANCE	SQ YD	490	70	70	70	70	70	70	70	70					
Z0013798	CONSTRUCTION LAYOUT	L SUM	1	0.14	0.16	0.14	0.14	0.14	0.14	0.14	0.14					
Z0033052	COMMUNICATIONS VAULT	EACH	69	1	1	1	1	1	1	1	1	60		2		
Z0040530	PIPE UNDERDRAIN REMOVAL	FOOT	50		50											
** Z0076600	TRAINEES	HOUR	500	500												
X1700085	CLASS D PATCHES, TYPE IV, 14 INCH (SPECIAL)	SQ YD	29		29											
X2600028	DMS WI NTCIP 1203	EACH	7	1	1	1	1	1	1	1	1					
** Z0076604	TRAINEES TRAINING PROGRAM GRADUATE	HOUR	500	500												
X0327206	DATA SERVER	L SUM	1									1				
X0327566	ROADSIDE DETECTOR	EACH	28													28
Z0064800	SELECTIVE CLEARING	UNIT	15	3	1	2	1	2	2	4						

\* SPECIALTY ITEM  
\*\* =0042

1 REV 1/9/19

NOTE:  
ALL MINOR STRUCTURES ARE LOCATED IN WILL COUNTY  
WITH THE EXCEPTION OF EB I-290 AT MILL ROAD  
WHICH IS LOCATED IN DUPAGE COUNTY.



USER NAME = john	DESIGNED - LC	REVISED -
DRAWN - JN	REVISIONS -	
PLOT SCALE = 2.0000' / 1" =	CHECKED - JMT	REVISIONS -
PLOT DATE = 10/17/2018	DATE - 10/17/2018	REVISIONS -

**STATE OF ILLINOIS  
DEPARTMENT OF TRANSPORTATION**

SUMMARY OF QUANTITIES			
I-55, I-80 AND I-290 DMS INSTALLATION			
SCALE: 1"=50'	SHEET	OF SHEETS	STA. TO STA.

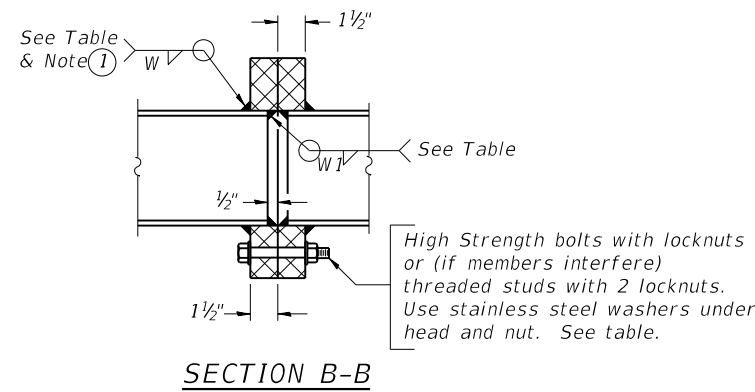
F.A.I. RTE.	SECTION	COUNTY	TOTAL SHEETS	SHEET NO.
*	2018-024-1	WILL/DUPAGE	177	11
CONTRACT NO. 62066				
ILLINOIS FED. AID PROJECT				

• I-55, I-80 & I-290

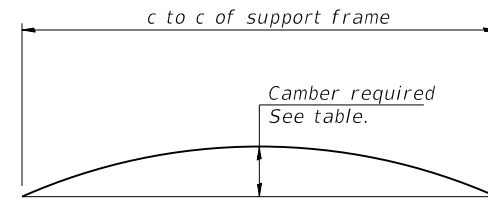
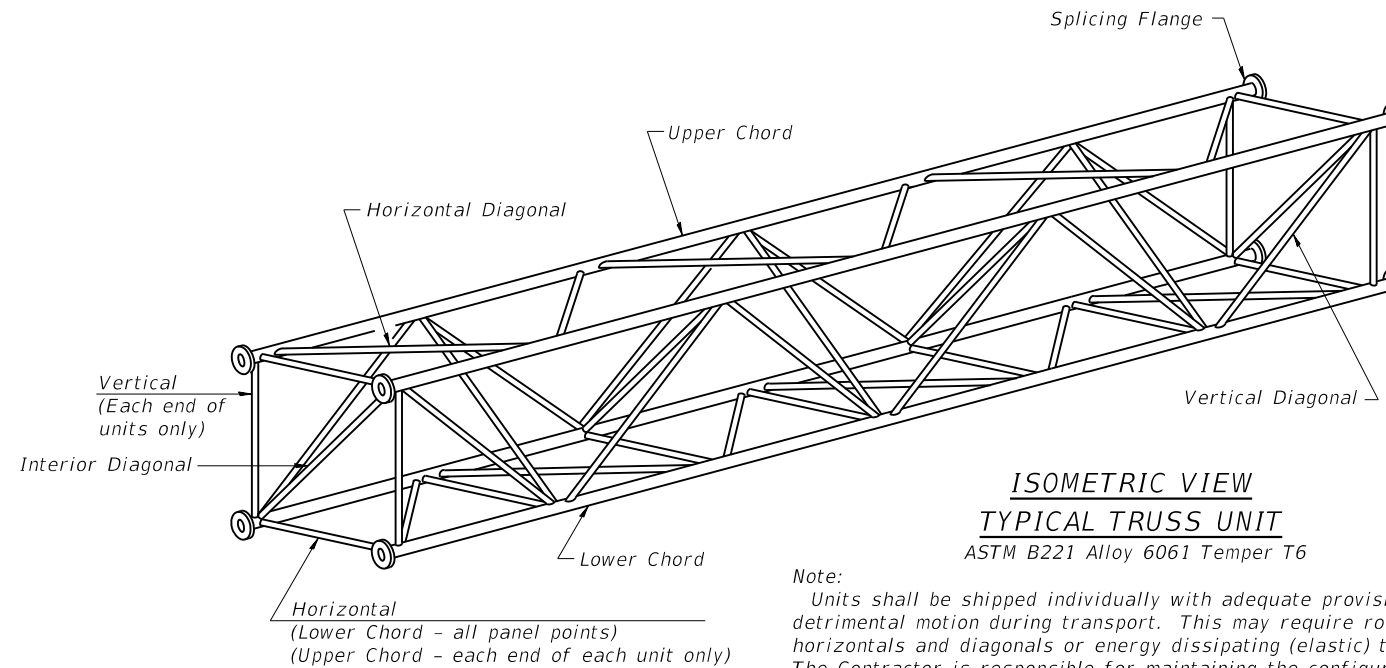
1 REV 1/9/19 REV. 12/6/18 REV. 12/3/18 REV. 11/30/18

**TRUSS UNIT TABLE**

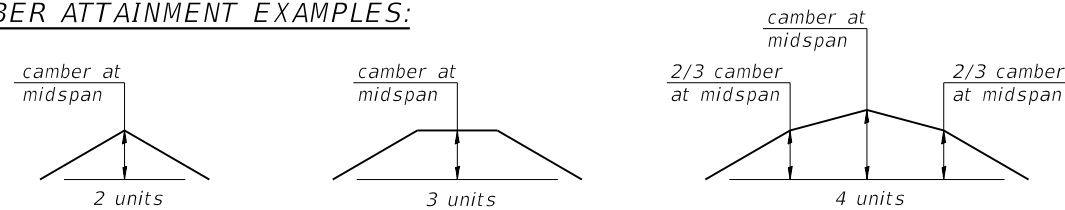
Structure Number	Station	Design Truss Type	Exterior Units (2)			Interior Unit				Upper & Lower Chord		Verticals; Horizontal; Vertical, Horizontal, and Interior Diagonals		Camber at Midspan	Splicing Flange					
			No. Panels per Unit	Unit Lgth.(Le)	Panel Lgth.(P)	No. Req'd.	No. Panels per Unit	Unit Lgth.(Li)	Panel Lgth.(P)	O.D.	Wall	O.D.	Wall		Bolts		Weld Sizes		A	B
															No./Splice	Dia.	W	W1		
1S0991055L247.5	40+50.00	III-A	5	28'-4"	5'-3 1/2"	0	-	-	-	7"	5/16"	3 1/4"	5/16"	11/16"	6	1"	7/16"	5/16"	11 1/2"	15"
1S0991080R123.5	139+00.00	III-A	6	30'-10 1/2"	4'-10"	0	-	-	-	7"	5/16"	3 1/4"	5/16"	3/4"	6	1"	7/16"	5/16"	11 1/2"	15"
1S0991055L255.2	38+00.00	III-A	7	35'-8 1/2"	4'-10"	0	-	-	-	7"	5/16"	3 1/4"	5/16"	7/8"	6	1"	7/16"	5/16"	11 1/2"	15"



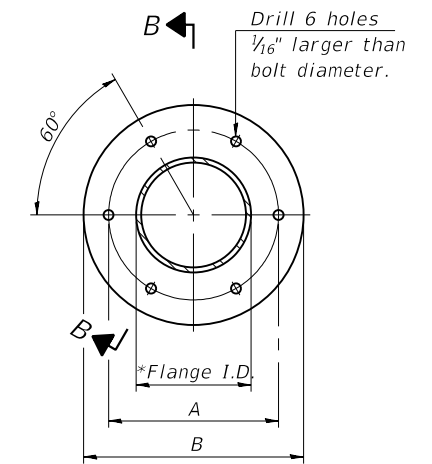
① Splicing Flanges shall be attached to each truss unit with the truss shop assembled to camber shown. Truss units shall be in proper alignment and flange surfaces shall be shop bolted into full contact before welding. Sufficient external welds or tacks shall be made to secure flanges until remaining welds are made after disassembly. Adjacent flanges shall be "match marked" to insure proper field assembly.



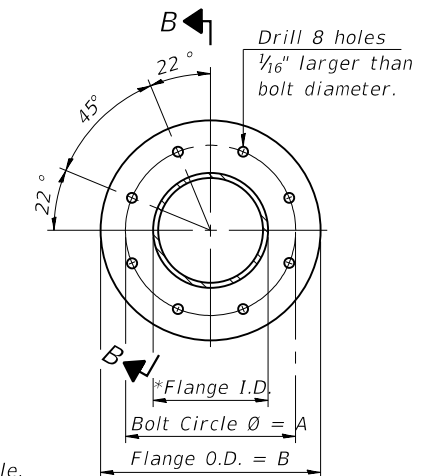
**CAMBER ATTAINMENT EXAMPLES:**



Camber shown is for fabrication only, measured with truss fully supported. (No-load condition)



**TRUSS TYPES I-A, II-A, & III-A**



**TRUSS TYPES II-A & III-A  
SPlicing FLANGES**

ASTM B221, Alloy 6061-T6 or ASTM B209, Alloy 6061-T651  
\*To fit O.D. of Chord with maximum gap of 1/16".

FILE PATH = P:\1707-732 Accurate PTB184-010\10 \*16 Ver. DMS Structures\CAD Sheets\Location 1\5-04-DMS Signs.dgn

054-A-2

2-17-2017



S-04-DMS Signs.dgn	DESIGNED - MAA	REVISED - 12/19/2018 MAA
USER NAME = marlan.egamy	DRAWN - MAA	REVISED -
PLOT SCALE =	CHECKED - MI, JJS	REVISED -
PLOT DATE = 12/20/2018	DATE - 11/20/2018	REVISED -

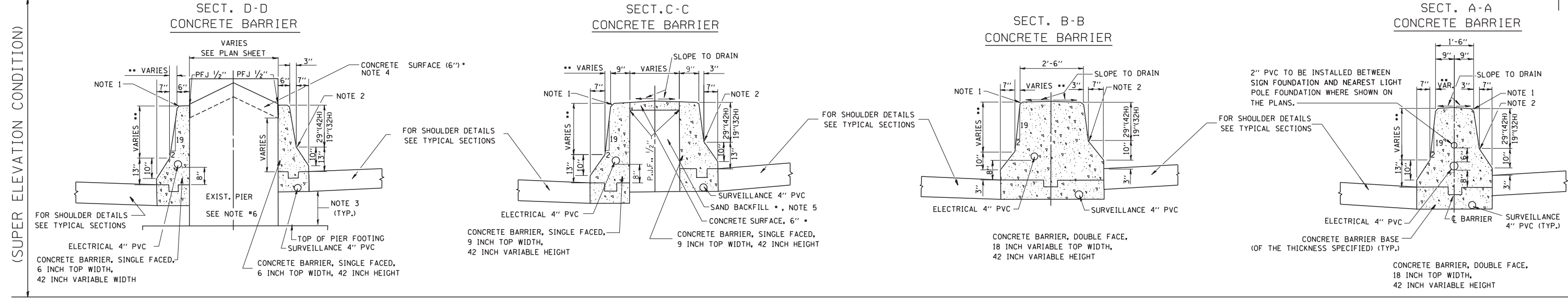
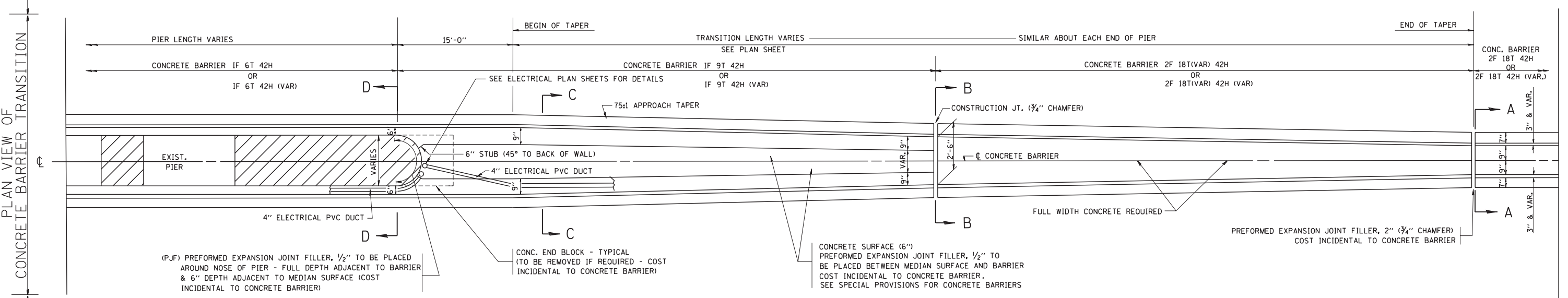
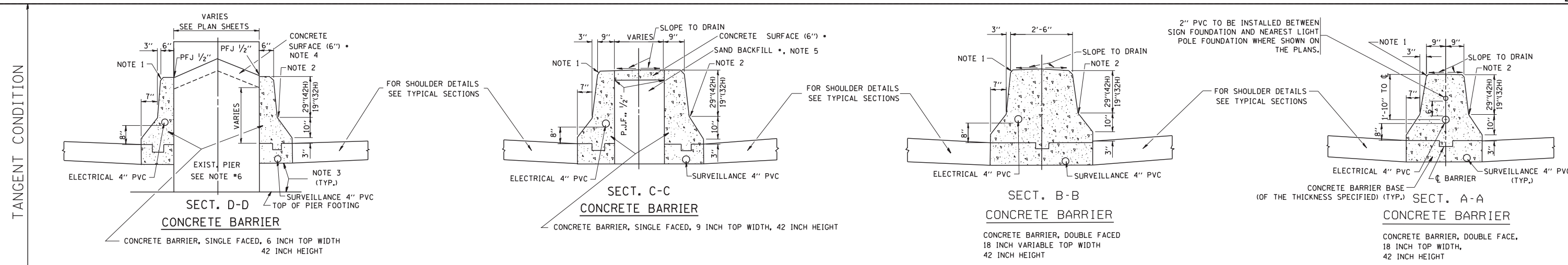
STATE OF ILLINOIS  
DEPARTMENT OF  
TRANSPORTATION

**OVERHEAD SIGN STRUCTURES - ALUMINUM TRUSS DETAILS  
FOR TRUSS TYPES I-A, II-A AND III-A**

SCALE: SHEET S-04 OF S-29 SHEETS STA. TO STA.

F.A.P. RTE.	SECTION	COUNTY	TOTAL SHEETS	SHEET NO.
•	2018-024-I	WILL/DUPAGE	177	142
CONTRACT NO. 62G66			ILLINOIS FED. AID PROJECT	

REV. 1/2/19



**GENERAL NOTES** - FOR UNDERDRAIN DETAILS SEE TYPICAL SECTIONS

- PREFORMED JOINT FILLER SHALL BE INCIDENTAL TO THE CONCRETE BARRIER OF THE TYPE INVOLVED.
- FOR KEYWAY (F) DIMENSIONS, SEE TYPICAL SECTIONS
- CONCRETE BARRIER BASE PAY ITEM IS TO BE INCLUDED IF THE BARRIER IS CONSTRUCTED MONOLITHIC OR JOINTED TO BASE. IF JOINTED CONTRACTORS WILL HAVE THE OPTION OF USING A KEYWAY OR TIE BARS AT O.C.

**NOTE 1** - 3/4" CHAMFER OR 1" RADIUS (OPTIONAL)

**NOTE 2** - 10" RADIUS (OPTIONAL)

**NOTE 3** - EXTEND BOTTOM OF BARRIER TO FOOTING ONLY WHEN DEPTH IS 6" OR LESS, OTHERWISE MAINTAIN SAME DEPTH AS BOTTOM OF SHOULDER

**NOTE 4** - PIER FILLER MATERIAL TO BE CONCRETE IF MINIMUM 6" THICKNESS WILL BE MAINTAINED. IF 6" THICKNESS CANNOT BE MAINTAINED USE ASPHALT FILLER MATERIAL AS DIRECTED BY THE ENGINEER.

**NOTE 5** - SAND BACKFILL AND CONCRETE SURFACE WILL BE REQUIRED. FILLING WITH CONCRETE WILL NOT BE ALLOWED.

**NOTE 6** - IF PIER IS NEW CONSTRUCTION BARRIER WALL MAY BE MONOLITHIC

•• MAINTAIN SLOPE OF FACE AS SHOWN ON DETAIL. HEIGHT AND WIDTH OF BARRIER INCREASE WHERE A DIFFERENCE IN MEDIAN EDGE-OF-PAVEMENT GRADE ELEVATION EXISTS.

• COST OF SAND BACKFILL, CONCRETE SURFACE (6"), AND PIER FILLER MATERIAL WILL NOT BE INCIDENTAL.

FILE NAME = W:\diststd\22x34\bd27.dgn	USER NAME = gaglanobt	DESIGNED - FORD	REVISED - FORD 12-06-88	<b>STATE OF ILLINOIS DEPARTMENT OF TRANSPORTATION</b>	<b>CONCRETE BARRIER TRANSITION &amp; GENERAL DETAILS, CONCRETE BARRIER BASE</b>		F.A.I. RTE.	SECTION	COUNTY	TOTAL SHEETS	SHEET NO.
	PLOT SCALE = 50.0000' / IN.	CHECKED -	REVISED - 12/18/2018 LRC		SCALE: NONE	SHEET NO. 1 OF 1 SHEETS	STA.	2018-024-1	WILL/DUPAGE	177	177A
	PLOT DATE = 1/4/2008	DATE - 09-09-88	REVISED -					<b>BD-27</b>	CONTRACT NO.	62G66	
								FED. ROAD DIST. NO. 1	ILLINOIS	FED. AID PROJECT	