

102

01-18-2019 LETTING ITEM 102

FOR INDEX OF SHEETS, SEE SHEET NO. 2
FOR SUMMARY OF QUANTITIES, SEE SHEET NO. 6-7

DESIGN DESIGNATION
INTERSTATE

CURRENT ADT:
CHAMPAIGN COUNTY = 26,000 (2017)
DOUGLAS COUNTY = 21,400 (2017)

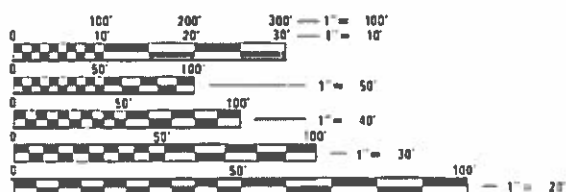
STATE OF ILLINOIS
DEPARTMENT OF TRANSPORTATION
DIVISION OF HIGHWAYS
**PROPOSED
HIGHWAY PLANS**

FAI-57 /FAI-72
SECTION D5 CM2019-9
PROJECT
PATCHING
CHAMPAIGN/DOUGLAS COUNTIES
C-95-012-19
I-72 and I-57

FOR LOCATION MAPS, SEE PAGES 3, 4, & 5

FAI RTE.	SECTION	COUNTY	TOTAL SHEETS	SHEET NO.
57/72	D5 CM2019-9	-	18	1
CHAMPAIGN/DOUGLAS ILLINOIS CONTRACT NO. 70D51				

D95-008-19



FULL SIZE PLANS HAVE BEEN PREPARED USING STANDARD
ENGINEERING SCALES. REDUCED SIZED PLANS WILL NOT
CONFORM TO STANDARD SCALES. IN MAKING MEASUREMENTS
ON REDUCED PLANS, THE ABOVE SCALES MAY BE USED.

J.U.L.I.E.
JOINT UTILITY LOCATION INFORMATION FOR EXCAVATION
1-800-892-0123 OR 811
ARCOLA, TUSCOLA, SCOTT, CHAMPAIGN, HENSLEY, RANTOUL

PROJECT ENGINEER JASON STULTS 217-466-7364
PROJECT MANAGER MICHAEL LEROY 217-466-7228
CONTRACT NO. 70D51

GROSS LENGTH = 251,908.800 FT. = 47.71 MILES
NET LENGTH = 134,678 FT. = 25.507 MILES

STATE OF ILLINOIS
DEPARTMENT OF TRANSPORTATION
DIVISION OF HIGHWAYS

SUBMITTED October 19, 2018
Kenneth W. Hammett
REGION ENGINEER

Dec 7, 2018
Jason Stults
ENGINEER OF DESIGN AND ENVIRONMENT

Dec 7, 2018
Paul J. Ch...
DIRECTOR OF HIGHWAYS PROJECT IMPLEMENTATION

PRINTED BY THE AUTHORITY
OF THE STATE OF ILLINOIS

INDEX OF SHEETS

SHEET NO	DESCRIPTION
1	COVER SHEET
2	INDEX OF SHEETS / HIGHWAY STANDARDS
2	GENERAL NOTES
3-5	LOCATION MAPS
6-7	SUMMARY OF QUANTITIES
8-11	EXISTING AND PROPOSED TYPICALS
12-15	SCHEDULE OF QUANTITIES
16-17	DETAIL - CLASS A (SPECIAL) PATCHING
18	DETAIL - CLASS B PATCH TUSCOLA RAMP A

GENERAL NOTES

G.N.-100
 ENGLISH UNITS OF MEASUREMENT SHALL GOVERN OVER AND SUPERSEDE ANY METRIC UNITS SHOWN IN THIS CONTRACT. WHERE INCLUDED, METRIC UNITS ARE FOR INFORMATION ONLY.

G.N.-100A
 ELECTRONIC FILES AND/OR ELECTRONIC SURVEY INFORMATION INCLUDING CADD FILES WILL NOT BE AVAILABLE TO THE CONTRACTOR.

G.N.-442B -- PATCHING SCHEDULES
 THE PATCHING SCHEDULES INCLUDED IN THE PLANS REPRESENT THE BEST INFORMATION AVAILABLE AT THE TIME OF COMPLETION OF THE PLANS FOR LETTING. VARIATIONS IN LOCATION AND SIZES OF BOTH FULL-DEPTH AND PARTIAL-DEPTH PATCHES MAY OCCUR. PRIOR TO MARKING PATCHES THE RESIDENT ENGINEER WILL COORDINATE WITH THE MAINTENANCE FIELD ENGINEER SO THAT THE MAINTENANCE FIELD ENGINEER CAN ASSIST IN FINDING AND MARKING PATCH LOCATIONS.

G.N.-1004.01
 COARSE AGGREGATE GRADATION CA-10 MAY BE USED WHENEVER COARSE AGGREGATE CA-6 IS SPECIFIED IN THE STANDARD SPECIFICATIONS.

NO COMMITMENTS

HIGHWAY STANDARDS

STANDARD NO.	DESCRIPTION
000001-07	STANDARD SYMBOLS, ABBREVIATIONS, AND PATTERNS
001001-02	AREAS OF REINFORCEMENT BARS
001006	DECIMAL OF AN INCH AND OF A FOOT
420001-09	PAVEMENT JOINTS
420701-03	PAVEMENT WELDED WIRE REINFORCEMENT
421001-03	BAR REINFORCEMENT FOR CRC PAVEMENT
442101-09	CLASS B PATCHES
701101-05	OFF-ROAD OPERATIONS, MULTILANE, 15' TO 24" FROM PAVEMENT EDGE
701106-02	OFF-ROAD OPERATIONS, MULTILANE, MORE THAN 15' AWAY
701400-09	APPROACH TO LANE CLOSURE, FREEWAY/EXPRESSWAY
701401-12	LANE CLOSURE, FREEWAY/EXPRESSWAY
701411-09	LANE CLOSURE, MULTILANE, AT ENTRANCE OR EXIT RAMP, FOR SPEEDS >= 45MPH
701426-09	LANE CLOSURE, MULTILANE, INTERMITTENT OR MOVING OPERATION, FOR SPEEDS >=45 MPH
701901-07	TRAFFIC CONTROL DEVICES
701426--09	LANE CLOSURE, MULTILANE, INTERMITTENT OR MOVING OPER., FOR SPEEDS >/= 45 MPH

MODEL: \$MODELNAME
 FILE NAME: P:\U\B\EB\ID\NTEG\Illinois.gov\PWD\DOT\Documents\DOT Offices\District 5\Projects\0570D51\CADD\DATA\Design\0570D51-18-1-01-01.dgn

USER NAME = leroyma	DESIGNED -	REVISED -
	DRAWN -	REVISED -
PLOT SCALE = 40.0000 ' / in.	CHECKED -	REVISED -
PLOT DATE = 10/19/2018	DATE -	REVISED -

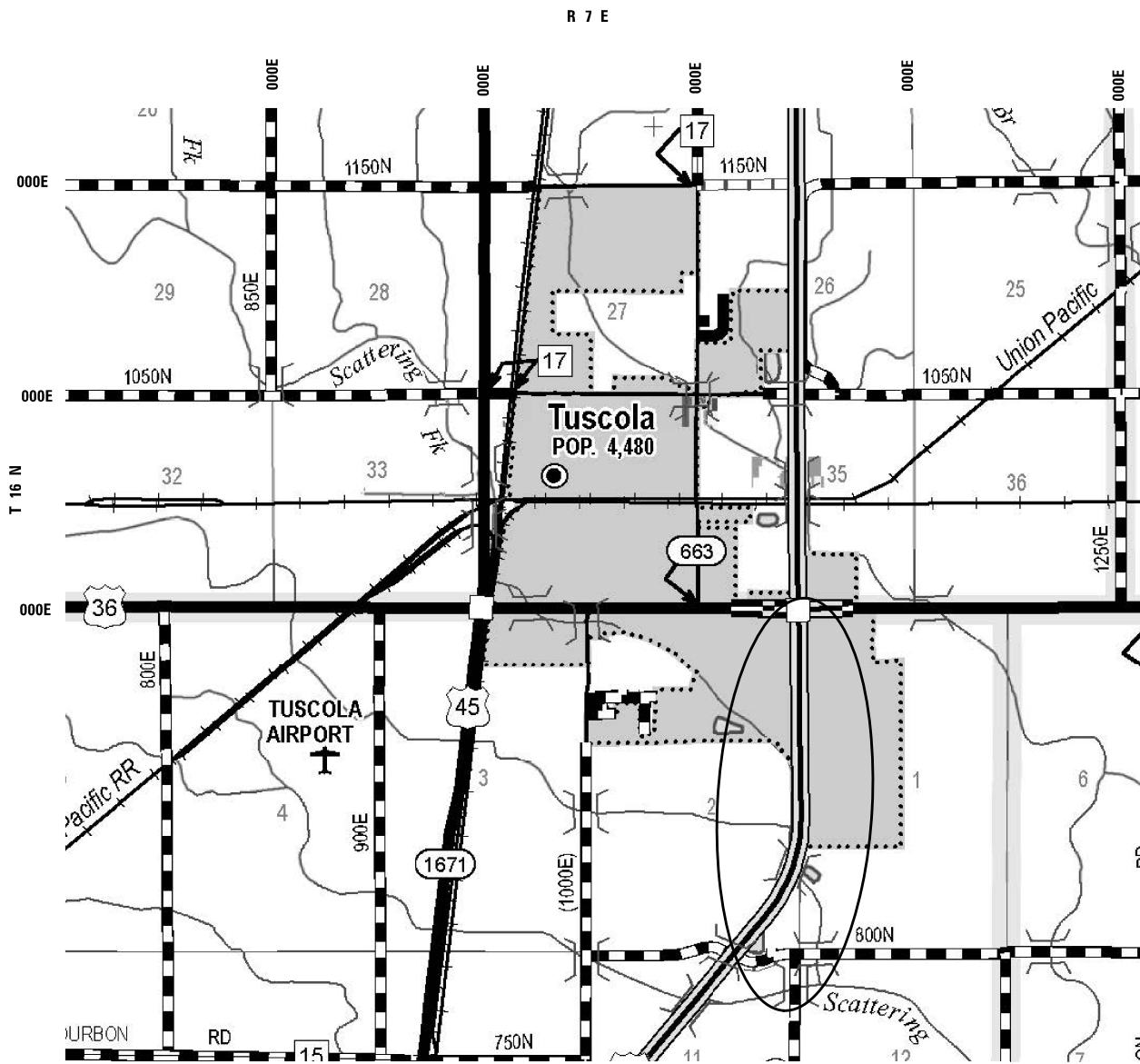
**STATE OF ILLINOIS
 DEPARTMENT OF TRANSPORTATION**

SCALE: SHEET OF SHEETS STA. TO STA.

F.A.I. RTE.	SECTION	COUNTY	TOTAL SHEETS	SHEET NO.
57/72	D5 CM2019-9	*	18	2
* CHAMPAIGN/DOUGLAS			CONTRACT NO. 70D51	
ILLINOIS FED. AID PROJECT				

LOCATION #1

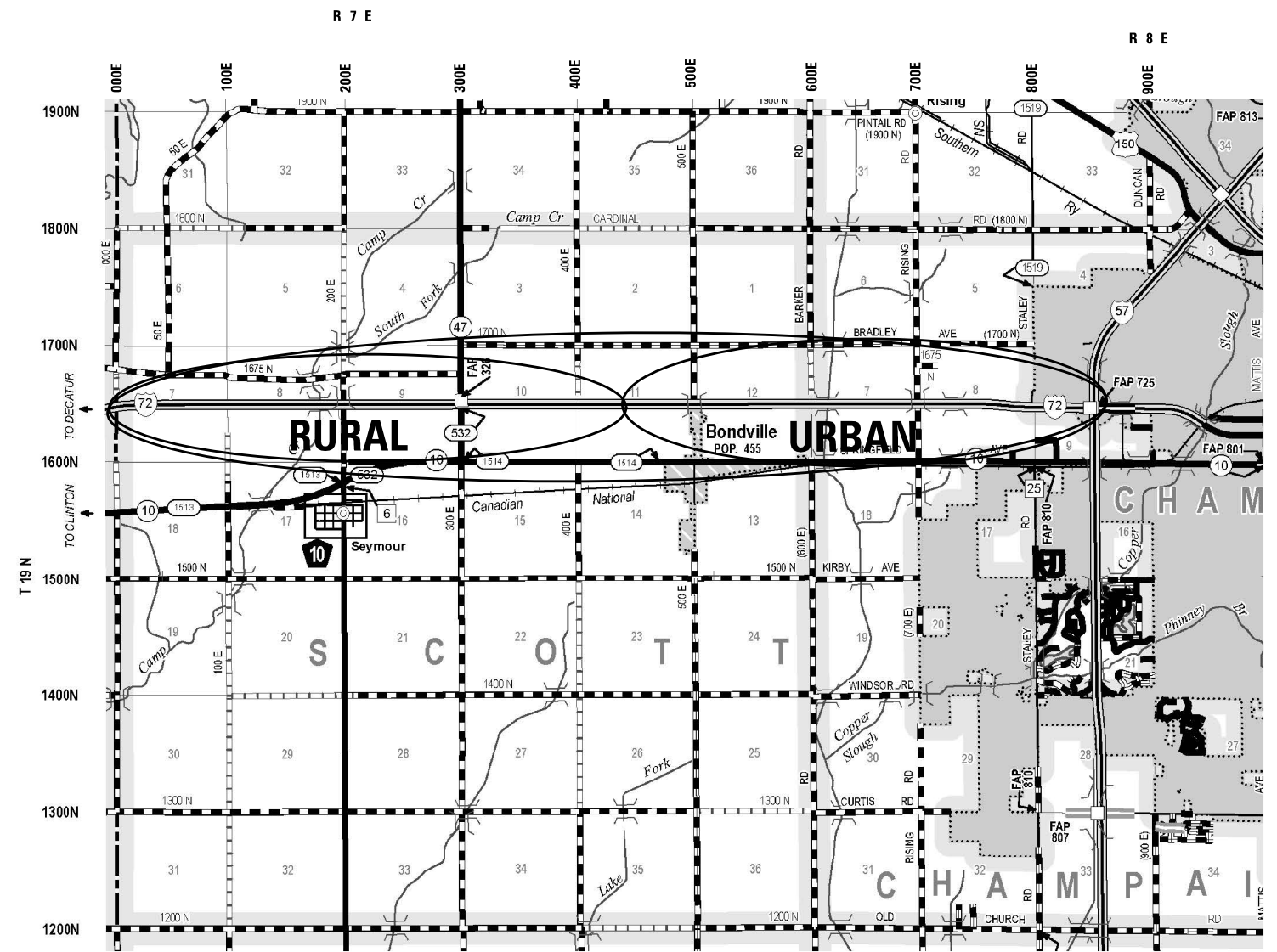
SB STA. 439 + 23 TO STA. 691 + 15
NB STA. 547 + 00 TO STA. 687 + 14



DOUGLAS COUNTY

LOCATION #2

EB STA. 1544 + 92 TO STA. 1958 + 66
WB STA. 1530 + 08 TO STA. 1986 + 70



CHAMPAIGN COUNTY

MODEL: \\MODELNAME
 FILE NAME: \\FILENAME
 PROJECT: \\PROJECT
 OFFICE: \\OFFICE
 DESIGNED BY: \\DESIGNEDBY
 DRAWN BY: \\DRAWNBY
 CHECKED BY: \\CHECKEDBY
 DATE: \\DATE
 PLOT SCALE: \\PLOTSCALE
 PLOT DATE: \\PLOTDATE

USER NAME = leroyma	DESIGNED -	REVISED -
	DRAWN -	REVISED -
PLOT SCALE = 40,0000' / in.	CHECKED -	REVISED -
PLOT DATE = 10/18/2018	DATE -	REVISED -

STATE OF ILLINOIS
DEPARTMENT OF TRANSPORTATION

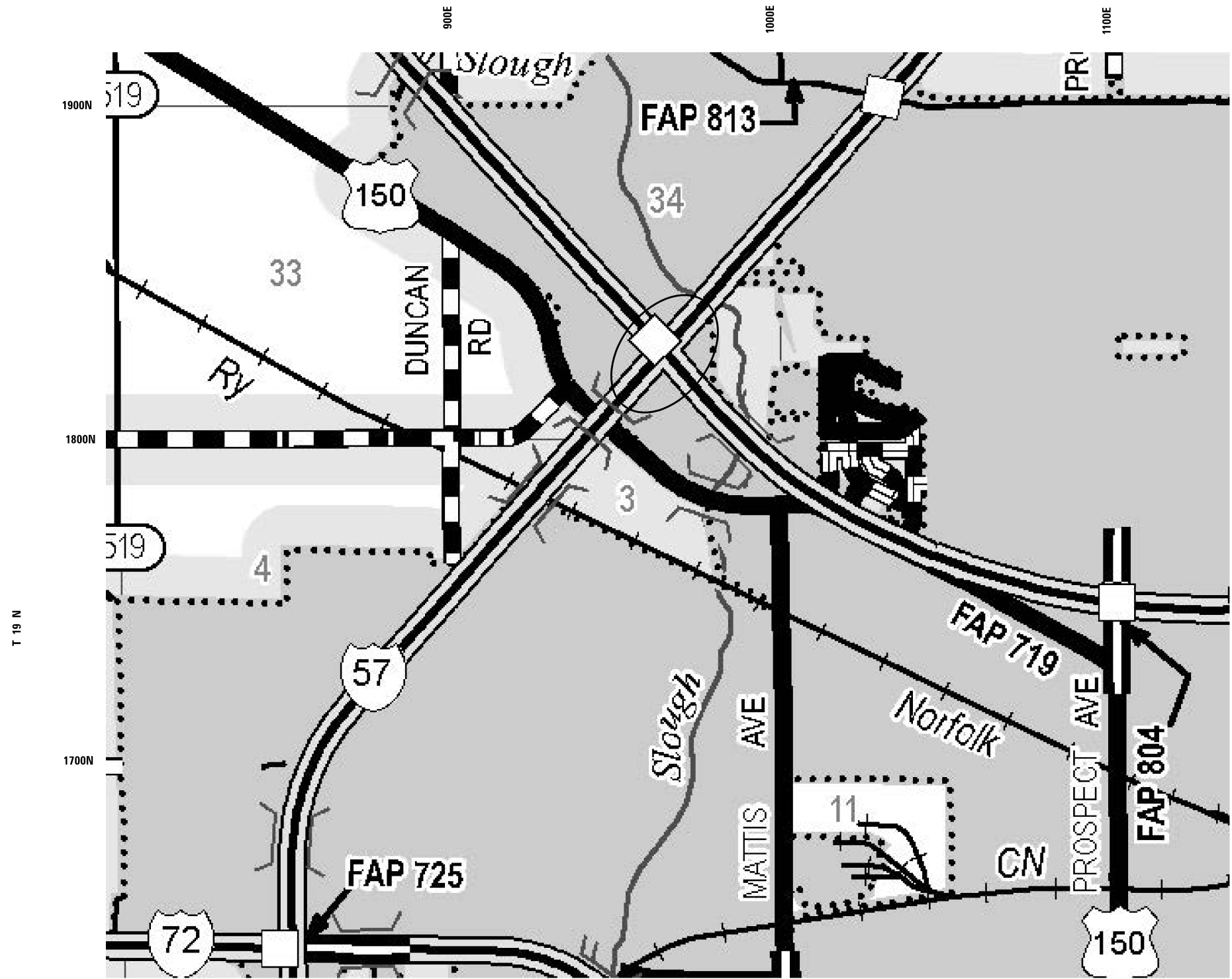
LOCATION MAP

SCALE: SHEET 1 OF 3 SHEETS STA. TO STA.

F.A.I. RTE.	SECTION	COUNTY	TOTAL SHEETS	SHEET NO.
57/72	D5 CM2019-9	-	18	3
CHAMPAIGN/DOUGLAS			CONTRACT NO. 70D51	
ILLINOIS FED. AID PROJECT				

LOCATION #3
NB STA. 593 + 75
SB STA. 626 + 70 TO STA. 628 + 33

R 8 E



MODEL: \\MODELNAME
 FILE NAME: \\FILENAME
 PROJECT: \\PROJECTNAME
 OFFICE: \\OFFICE
 DATE: \\DATE
 DRAWN BY: \\DRAWNBY
 CHECKED BY: \\CHECKEDBY
 DATE: \\DATE

USER NAME = leroyma	DESIGNED -	REVISED -
	DRAWN -	REVISED -
PLOT SCALE = 40,0000' / in.	CHECKED -	REVISED -
PLOT DATE = 10/18/2018	DATE -	REVISED -

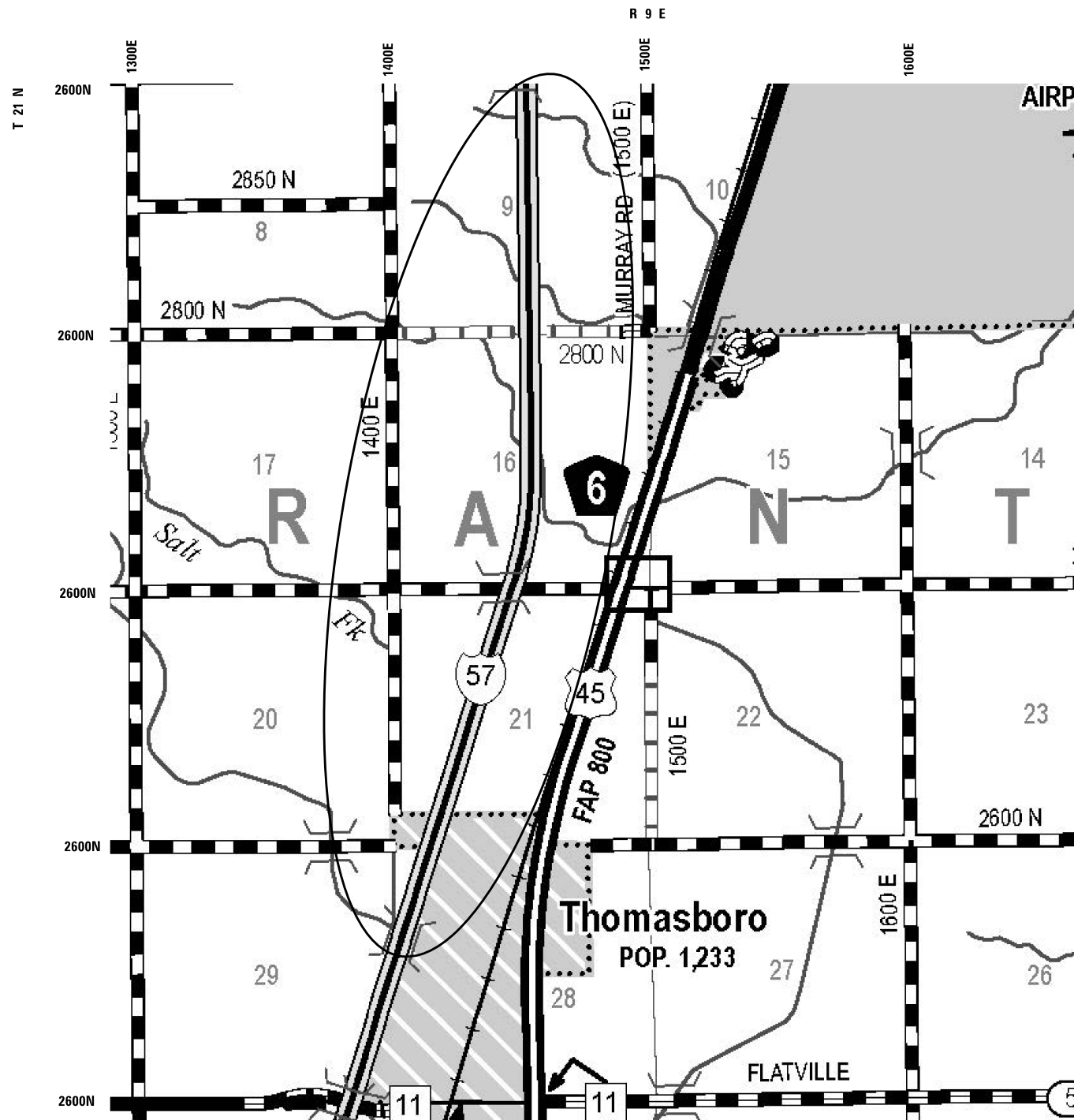
STATE OF ILLINOIS
DEPARTMENT OF TRANSPORTATION

LOCATION MAP

SCALE: SHEET 2 OF 3 SHEETS STA. TO STA.

F.A.I. RTE.	SECTION	COUNTY	TOTAL SHEETS	SHEET NO.
57/72	D5 CM2019-9	*	18	4
* CHAMPAIGN/DOUGLAS			CONTRACT NO. 70D51	
ILLINOIS FED. AID PROJECT				

LOCATION #4
NB STA. 955 + 38 TO STA. 1220 + 43
SB STA. 626 + 70 TO STA. 1619 + 97



MODEL: \\MODELNAME
 FILE NAME: \\FILENAME
 PROJECT: \\PROJECTNAME
 OFFICE: \\OFFICE
 DATE: \\DATE

USER NAME = leroyma	DESIGNED -	REVISED -
	DRAWN -	REVISED -
PLOT SCALE = 40,0000' / in.	CHECKED -	REVISED -
PLOT DATE = 10/18/2018	DATE -	REVISED -

STATE OF ILLINOIS
DEPARTMENT OF TRANSPORTATION

LOCATION MAP

SCALE: SHEET 3 OF 3 SHEETS STA. TO STA.

F.A.I. RTE.	SECTION	COUNTY	TOTAL SHEETS	SHEET NO.
57/72	D5 CM2019-9	*	18	5
CHAMPAIGN/DOUGLAS			CONTRACT NO. 70D51	
ILLINOIS FED. AID PROJECT				

LOCATION #1 LOCATION #2 LOCATION #2
 FAI 57 FAI 72/57 FAI 72/57
 DOUGLAS CHAMPAIGN CHAMPAIGN
 STA. 439+23 TO STA. 1764+26 TO STA. 1531+08 TO
 691+17.00 STA. 1986+70 STA. 1764+26

RURAL RURAL RURAL
 INTERSTATE INTERSTATE INTERSTATE
 100% STATE 100% STATE 100% STATE

CONSTRUCTION CODE: 0006 0006 0006

PAY ITEM CODE		UNIT	TOTAL	QTY	QTY	QTY
4200060	WELDED WIRE REINFORCEMENT	SQ YD	70.0	70.0		
44201000	CLASS B PATCHES, TYPE IV, 12 INCH	SQ YD	70.0	70.0		
44201063	CLASS B PATCHES, TYPE II, 18 INCH	SQ YD	30.0		30.0	
44201299	DOWEL BARS 1 1/2"	EACH	96.0	36.0	60.0	
44213000	PATCHING REINFORCEMENT	SQ YD	1121.0	344.0	264.0	513.0
44213200	SAW CUTS	FOOT	4154.0	1302.0	1100.0	1752.0
44213204	TIE BARS 3/4"	EACH	4055.0	1186.0	1034.0	1835.0
67100100	MOBILIZATION	LSUM	1.0	0.3	0.3	0.4
70100420	TRAFFIC CONTROL AND PROTECTION, STANDARD 701411	EACH	11.0	2.0	6.0	3.0
70100800	TRAFFIC CONTROL AND PROTECTION, STANDARD 701401	LSUM	1.0	0.3	0.3	0.4
70103815	TRAFFIC CONTROL SURVEILLANCE	CAL DA	16.0	3.0	6.0	7.0
X1700052	CLASS A PATCHES, TYPE II, 12 INCH (SPECIAL)	SQ YD	192.0			192
X1700079	CLASS A PATCHES, TYPE III, 12 INCH (SPECIAL)	SQ YD	32.0			32
X1700080	CLASS A PATCHES, TYPE IV, 12 INCH (SPECIAL)	SQ YD	27.0			27

MODEL: \\MODELS\NAME
 FILE NAME: P:\U\U&B\EBID\NTEG\Illinois.gov\PIWD\DOT\Documents\DOT_Offices\District 5\Projects\0570D51\CADD\Drawings\Design\0570D51_rft-500.dgn

USER NAME = leroyma	DESIGNED -	REVISED -
	DRAWN -	REVISED -
PLOT SCALE = 40.0000' / in.	CHECKED -	REVISED -
PLOT DATE = 10/18/2018	DATE -	REVISED -

**STATE OF ILLINOIS
 DEPARTMENT OF TRANSPORTATION**

SUMMARY OF QUANTITIES

SCALE: SHEET OF SHEETS STA. TO STA.

F.A.I. RTE.	SECTION	COUNTY	TOTAL SHEETS	SHEET NO.
57/72	D5 CM2019-9	*	18	6
*CHAMPAIGN/DOUGLAS		CONTRACT NO. 70D51		
ILLINOIS FED. AID PROJECT				

SUMMARY OF QUANTITIES

LOCATION #1 FAI 57 DOUGLAS STA. 439+23 TO 691+17.00	LOCATION #2 FAI 72/57 CHAMPAIGN STA. 1764+26 TO STA. 1986+70	LOCATION #2 FAI 72/57 CHAMPAIGN STA. 1531+08 TO STA. 1764+26
---	--	--

RURAL INTERSTATE 100% STATE	URBAN INTERSTATE 100% STATE	RURAL INTERSTATE 100% STATE
-----------------------------------	-----------------------------------	-----------------------------------

CONSTRUCTION CODE:	0006	0006	0006
--------------------	------	------	------

PAY ITEM CODE	DESCRIPTION	UNIT	TOTAL	QTY	QTY	QTY
X1700081	CLASS A PATCHES, TYPE II, 16 INCH (SPECIAL)	SQ YD	275.0		184.0	91.0
X1700082	CLASS A PATCHES, TYPE IV, 16 INCH (SPECIAL)	SQ YD	174.0		80.0	94.0
X4420565	CLASS A PATCHES, TYPE II, 11 INCH (SPECIAL)	SQ YD	142.0	142.0		
X4420569	CLASS A PATCHES, TYPE III, 11 INCH (SPECIAL)	SQ YD	96.0	96.0		
X4420571	CLASS A PATCHES, TYPE IV, 11 INCH (SPECIAL)	SQ YD	107.0	107.0		
X4420630	CLASS A PATCHES, TYPE II, 15 INCH (SPECIAL)	SQ YD	78.0			78
70107025	CHANGEABLE MESSAGE SIGN	CAL DA	38.0	19.0	9.0	10.0

* SPECIALTY ITEMS

MODEL: \$MODELNAME
FILE NAME: P:\U\B\BID\NTEC\Illinois.gov\PIWDOT\Documents\DOT_Offices\District 5\Projects\0570D51\CADD\Design\0570D51-rft-S00.dgn

USER NAME = leroyma	DESIGNED -	REVISED -
	DRAWN -	REVISED -
PLOT SCALE = 40.0000' / in.	CHECKED -	REVISED -
PLOT DATE = 10/19/2018	DATE -	REVISED -

**STATE OF ILLINOIS
DEPARTMENT OF TRANSPORTATION**

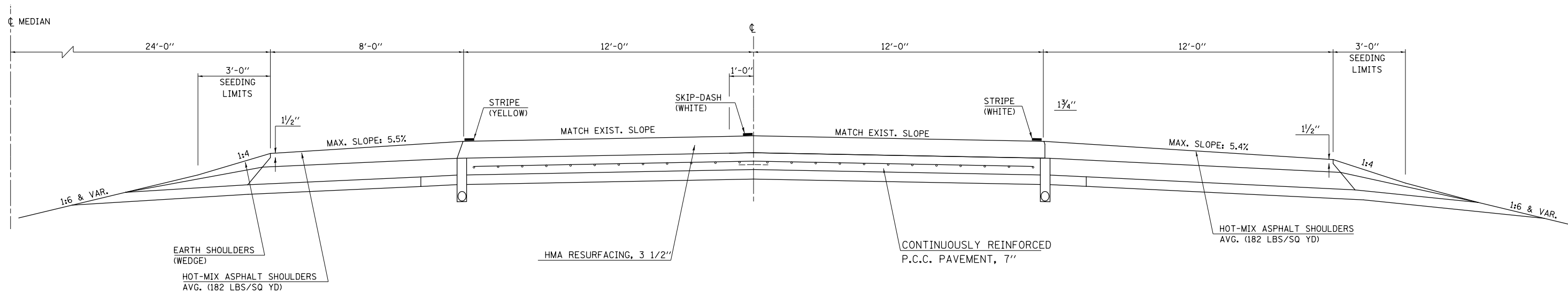
SUMMARY OF QUANTITIES

SCALE: SHEET OF SHEETS STA. TO STA.

F.A.I. RTE.	SECTION	COUNTY	TOTAL SHEETS	SHEET NO.
57/72	D5 CM2019-9	*	18	7
*CHAMPAIGN/DOUGLAS			CONTRACT NO. 70D51	
ILLINOIS FED. AID PROJECT				

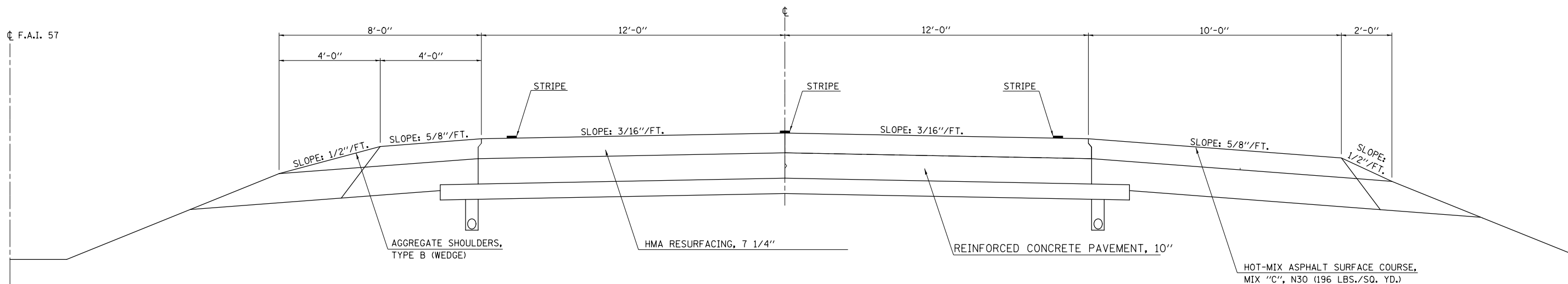
EXISTING TYPICAL SECTION (I-57 DOUGLAS COUNTY)

STATION 439+23 TO STATION 691+15



EXISTING TYPICAL SECTION (I-57 CHAMPAIGN COUNTY)

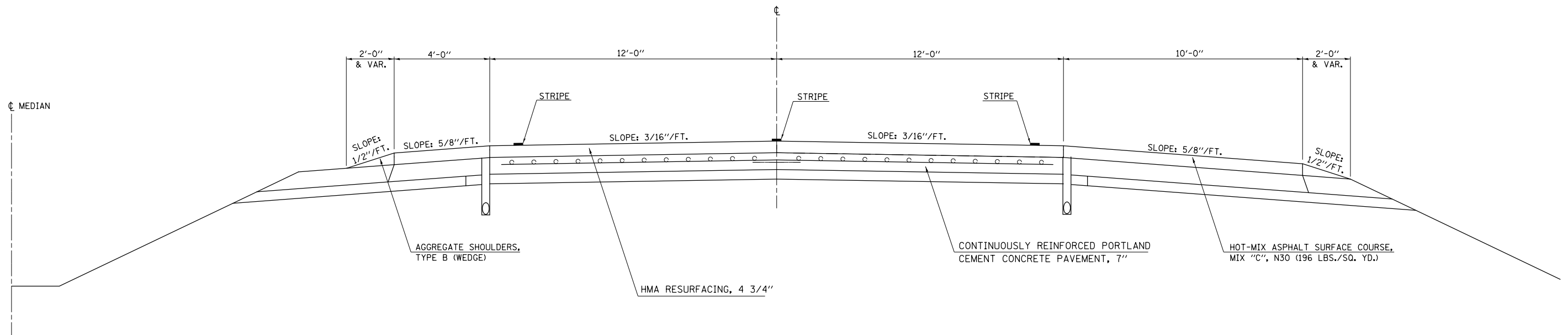
STATION 593+75 TO STATION 628+33



FILE NAME =	USER NAME = leroyma	DESIGNED - JMS	REVISED -	STATE OF ILLINOIS DEPARTMENT OF TRANSPORTATION	EXISTING & PROPOSED TYPICAL SECTIONS			F.A.I. RT. =	SECTION	COUNTY	TOTAL SHEETS	SHEET NO.
pw:\IL\084EBIDINTEG.illinois.gov\PIWIDOT\Documents\DOT Offices\District 5\Projects\057\CDRAWING\Design\MS70051-shr-typical.s.dwg	DESIGNED - JMS	REVISED -	57/72					D5 CM2019-9	*	18	8	
PLOT SCALE = 100.0000' / 1in.	CHECKED -	REVISED -	SCALE: NO SCALE SHEET NO. 1 OF 8 SHEETS STA. TO STA.			CONTRACT NO. 70D51						
PLOT DATE = 10/18/2018	DATE - 02/27/2009	REVISED -	FED. ROAD DIST. NO.		ILLINOIS FED. AID PROJECT							

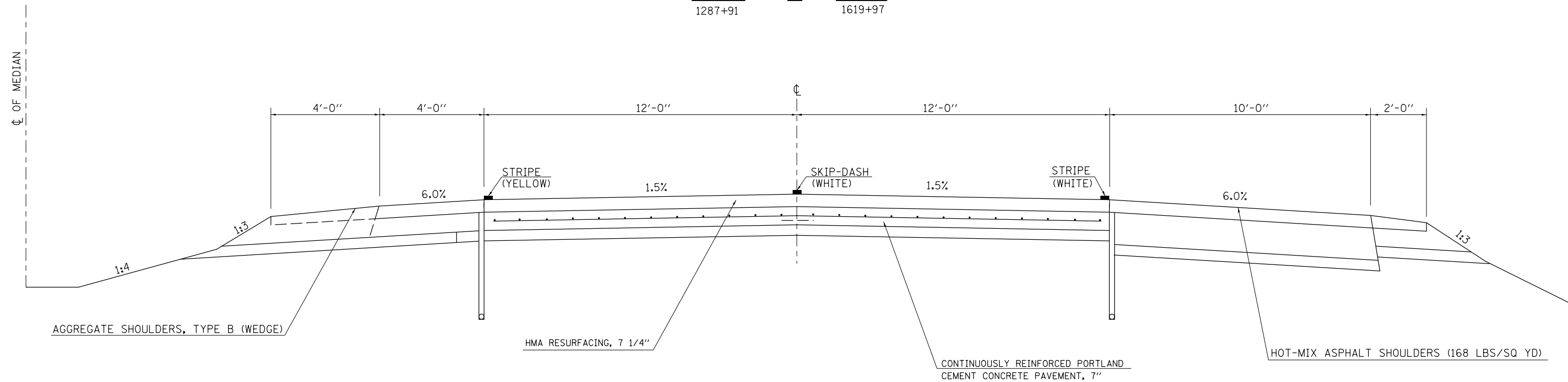
EXISTING TYPICAL SECTION (I-57 CHAMPAIGN COUNTY)

STATION 980+83 TO STATION 1252+91



EXISTING TYPICAL SECTION (I-57 CHAMPAIGN COUNTY)

STATION 1287+91 TO STATION 1619+97



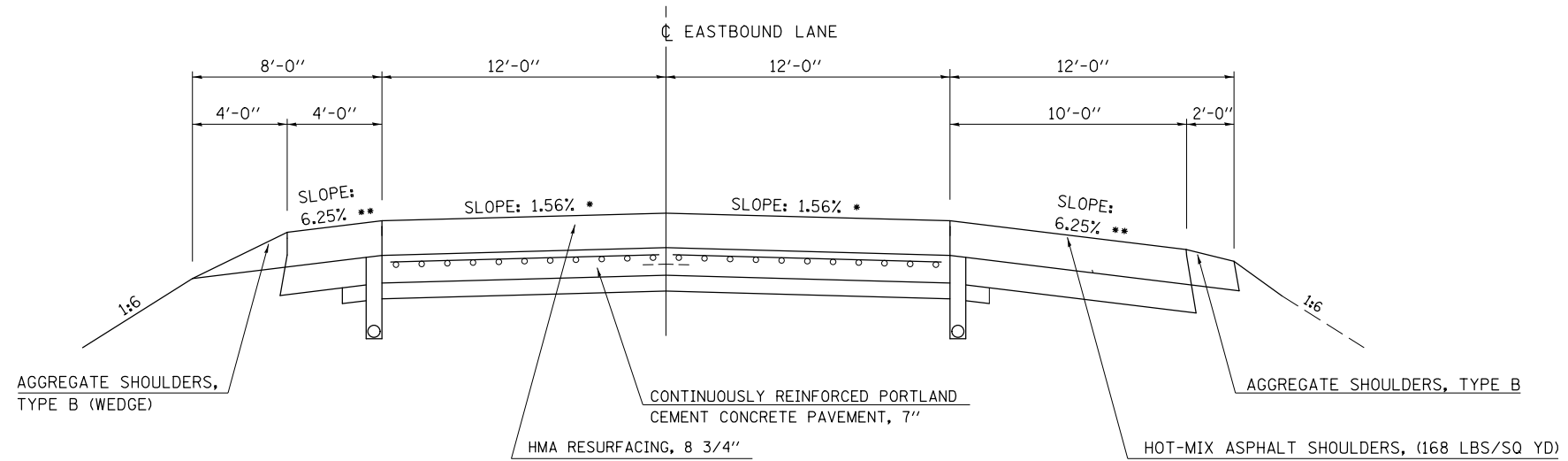
FILE NAME =	USER NAME = leroyma	DESIGNED - JMS	REVISED -	STATE OF ILLINOIS DEPARTMENT OF TRANSPORTATION	EXISTING & PROPOSED TYPICAL SECTIONS			F.A.I. RTE.	SECTION	COUNTY	TOTAL SHEETS	SHEET NO.
pw:\IL084EBIDINTEG.illinois.gov\PI\DOT\Documents\DOT Offices\District 5\Projects\057\Drawings\Design\MS70051-shr-typical.sdw	DRAWN	REVISIONS	REVISIONS					57/72	D5 CM2019-9	*	18	9
PLOT SCALE = 100.0000' / 1"	CHECKED -	REVISIONS	REVISIONS		CONTRACT NO. 70D51							
PLOT DATE = 10/18/2018	DATE - 02/27/2009	REVISIONS	REVISIONS		SCALE: NO SCALE	SHEET NO. 1 OF 8 SHEETS	STA. TO STA.	FED. ROAD DIST. NO. ILLINOIS FED. AID PROJECT				

- * SLOPE VARIES FOR SUPERELEVATION IN CURVES.
- ** SLOPE VARIES IN SUPERELEVATION WITH MAXIMUM OF 0.08 FT/FT DIFFERENCE.

EXISTING TYPICAL SECTION (I-72 CHAMPAIGN COUNTY)

STATION 1530+08 TO STATION 1982+21

EASTBOUND F.A.I. 72 SHOWN; SAME TYPICAL FOR WESTBOUND F.A.I. 72



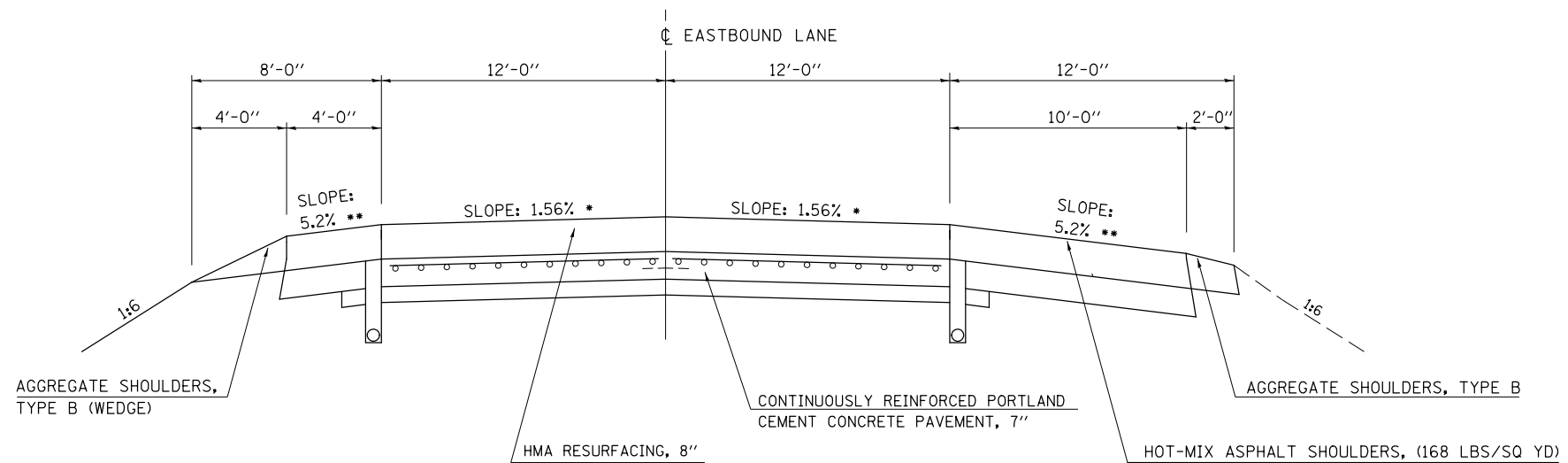
NOT TO SCALE

- * SLOPE VARIES FOR SUPERELEVATION IN CURVES.
- ** SLOPE VARIES IN SUPERELEVATION WITH MAXIMUM OF 0.08 FT/FT DIFFERENCE.

EXISTING TYPICAL SECTION (I-72 CHAMPAIGN COUNTY)

STATION 1982+21 TO STATION 1986+70

EASTBOUND F.A.I. 72 SHOWN; SAME TYPICAL FOR WESTBOUND F.A.I. 72



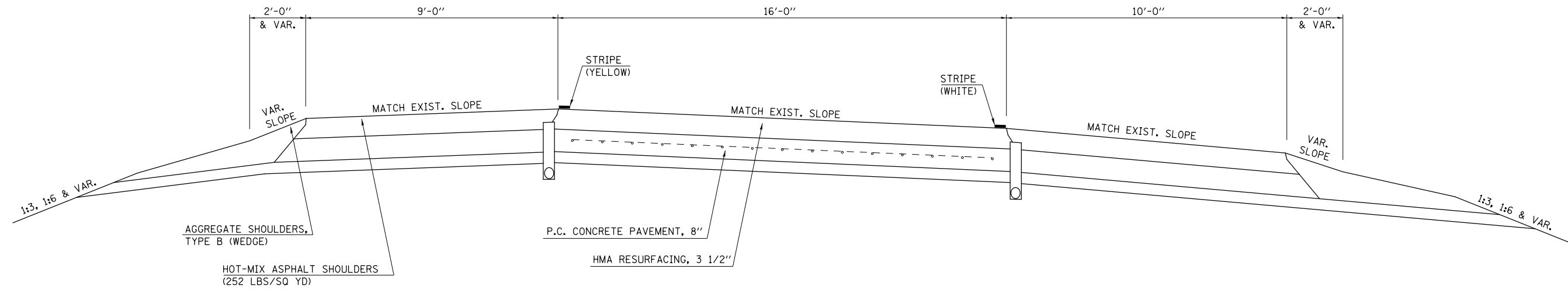
NOT TO SCALE

FILE NAME =	USER NAME = leroyma	DESIGNED - JMS	REVISED -	STATE OF ILLINOIS DEPARTMENT OF TRANSPORTATION	EXISTING & PROPOSED TYPICAL SECTIONS			F.A.I. RTE.	SECTION	COUNTY	TOTAL SHEETS	SHEET NO.
p:\1\084EBIDINTEG.illinois.gov\PIWIDOT\Documents\DOT Offices\District 5\Projects\057\DRAWING\Design\MS70051-shr-typical.sdw	DESIGNED - JMS	REVISED -	57/72					D5 CM2019-9	*	18	10	
PLOT SCALE = 100.0000' / 1" =	CHECKED -	REVISED -	SCALE: NO SCALE			SHEET NO. 1 OF 8 SHEETS	STA. TO STA.	CONTRACT NO. 70D51				
PLOT DATE = 10/18/2018	DATE - 02/27/2009	REVISED -	FED. ROAD DIST. NO.			ILLINOIS FED. AID PROJECT						

PROPOSED TYPICAL SECTION

F.A.I. 57 & U.S. ROUTE 36 INTERCHANGE RAMPS

RAMP A: STATION 0+33.00 TO STATION 16+92.00



FILE NAME =	USER NAME = leroyma	DESIGNED - JMS	REVISED -	STATE OF ILLINOIS DEPARTMENT OF TRANSPORTATION	EXISTING & PROPOSED TYPICAL SECTIONS			F.A.I. RTE.	SECTION	COUNTY	TOTAL SHEETS	SHEET NO.
p:\11\084EBIDINTEG.illinois.gov\PIWDD\Documents\DOT Offices\District 5\Projects\0579\Drawings\Design\MS70051-shr-typical.dwg	DESIGNED - JMS	REVISED -	57/72					D5 CM2019-9	*	18	11	
PLOT SCALE = 100.0000' / 1" =	CHECKED -	REVISED -	CONTRACT NO. 70D51									
PLOT DATE = 10/18/2018	DATE - 02/27/2009	REVISED -	SCALE: NO SCALE		SHEET NO. 1 OF 8 SHEETS	STA.	TO STA.	FED. ROAD DIST. NO.	ILLINOIS FED. AID PROJECT			

CLASS A (SPECIAL), 11"

LOG MILE	APPROX. STATION	LANE	LENGTH	WIDTH	SQ YD	TYPE	DESCRIPTION	CLASS A PATCHES, TYPE II, 11 INCH (SPECIAL) (SQ YD)	CLASS A PATCHES, TYPE III, 11 INCH (SPECIAL) (SQ YD)	CLASS A PATCHES, TYPE IV, 11 INCH (SPECIAL) (SQ YD)	SAW CUTS (FT)	TIE BARS 3/4" TRANVERSE (EACH)	TIE BARS 3/4" LONGITUDINAL (EACH)	PATCHING REINFORCEMENT (SQ. YD)
								RURAL	RURAL	RURAL	RURAL	RURAL	RURAL	RURAL
								X4420565	X1700069	X1700071	44213200	44213204	44213204	44213000
I-57 (SB) DOUGLAS COUNTY:														
209.885	439+23	SBDL	6	12	8.00	2		8.00			36	44		8.0
209.898	439+92	SBDL	6	12	8.00	2		8.00			36	44		8.0
210.406	466+74	SBPL	6	12	8.00	2		8.00			36	44		8.0
210.406	466+74	SBDL	6	12	8.00	2		8.00			36	44		8.0
210.450	469+06	SBDL	8	12	10.67	2		10.67			40	44		10.7
211.644	532+11	SBDL	6	12	8.00	2		8.00			36	44		8.0
211.644	532+11	SBPL	6	12	8.00	2		8.00			36	44		8.0
211.672	533+59	SBDL	6	12	8.00	2		8.00			36	44		8.0
211.926	547+00	EQ.												
211.926	547+01	STA.												
211.933	547+38	SBDL	20	12	26.67	4			26.67		64	44	7	26.7
212.263	564+81	SBPL	12	12	16.00	3			16.00		48	44		16.0
212.263	564+81	SBDL	6	12	8.00	2		8.00			36	44		8.0
212.587	581+91	SBDL	8	12	10.67	2		10.67			40	44		10.7
212.620	583+66	SBDL	12	12	16.00	3			16.00		48	44		16.0
212.915	599+23	SBDL	6	12	8.00	2		8.00			36	44		8.0
214.577	687+00	EQ.												
214.577	687+03	STA.												
214.592	687+83	SBDL	12	12	16.00	3			16.00		48	44		16.0
214.655	691+15	SBDL	12	12	16.00	3			16.00		48	44		16.0
I-57 (NB) DOUGLAS COUNTY:														
211.926	547+00	EQ.												
211.926	547+01	STA.												
211.945	548+02	NBDL	20	12	26.67	4			26.67		64	44	7	26.7
212.188	560+85	NBDL	8	12	10.67	2		10.67			40	44		10.7
212.188	560+85	NBPL	6	12	8.00	2		8.00			36	44		8.0
212.547	579+80	NBDL	6	12	8.00	2		8.00			36	44		8.0
212.587	581+91	NBDL	20	12	26.67	4			26.67		64	44	7	26.7
212.643	584+87	NBDL	12	12	16.00	3			16.00		48	44		16.0
212.650	585+24	NBDL	8	12	10.67	2		10.67			40	44		10.7
212.658	585+66	NBDL	12	12	16.00	3			16.00		48	44		16.0
214.573	686+77	NBDL	20	12	26.67	4			26.67		64	44	7	26.7
214.577	687+00	EQ.												
214.577	687+03	STA.												
214.579	687+14	NBDL	8	12	10.67	2		10.67			40	44		10.7
DOUGLAS COUNTY TOTAL					344.00			141.33	96.00	106.67	1140.00	1144.00	28.00	344.00
USE								142.00	96.00	107.00	1140.00	1144.00	28.00	344.00

MODEL: \\MODELNAME
 FILE: \\NAME: \\PROJECTS\0570051\CADD\DATA\Design\0570051\c-h-schedule.dgn

USER NAME = leroyma	DESIGNED -	REVISED -
	DRAWN -	REVISED -
PLOT SCALE = 40.0000 ' / in.	CHECKED -	REVISED -
PLOT DATE = 10/18/2018	DATE -	REVISED -

**STATE OF ILLINOIS
DEPARTMENT OF TRANSPORTATION**

SCHEDULE OF QUANTITIES

SCALE: SHEET 1 OF 4 SHEETS STA. TO STA.

F.A.I. RTE.	SECTION	COUNTY	TOTAL SHEETS	SHEET NO.
57/72	D5 CM2019-9	*	18	12
* CHAMPAIGN/DOUGLAS			CONTRACT NO. 70D51	
ILLINOIS		FED. AID PROJECT		

CLASS A (SPECIAL), 15"

LOG MILE	APPROX. STATION	LANE	LENGTH	WIDTH	SQ YD	TYPE	DESCRIPTION	CLASS A PATCHES, TYPE II, 15 INCH (SPECIAL) (SQ YD)	SAW CUTS (FT)	TIE BARS 3/4" TRANVERSE (EACH) RURAL	PATCHING REINFORCEMENT (SQ. YD) RURAL
								RURAL	RURAL	RURAL	RURAL
								X4420630	44213200	44213204	44213000
I 57 (SB) CHAMPAIGN COUNTY											
250.298	1287+91	SBDL	6	12	8.00	2	near 136 off ramp	8.00	36	44	8.00
251.162	1333+53	SBDL	6	12	8.00	2		8.00	36	44	8.00
252.326	1394+99	SBDL	8	12	10.67	2		10.67	40	44	10.67
253.762	1470+81	SBDL	10	12	13.33	2		13.33	44	44	13.33
255.964	1587+08	SBPL	6	12	8.00	2		8.00	36	44	8.00
255.964	1587+08	SBDL	6	12	8.00	2		8.00	36	44	8.00
255.976	1587+71	SBDL	6	12	8.00	2		8.00	36	44	8.00
256.587	1619+97	SBDL	10	12	13.33	2		13.33	44	44	13.33
TOTAL					77.33			77.33	308.00	352.00	77.33
USE								78.00	308.00	352.00	78.00

CLASS A (SPECIAL), 12"

LOG MILE	APPROX. STATION	LANE	LENGTH	WIDTH	SQ YD	TYPE	DESCRIPTION	CLASS A PATCHES, TYPE II, 12 INCH (SPECIAL) (SQ YD)	CLASS A PATCHES, TYPE III, 12 INCH (SPECIAL) (SQ YD)	CLASS A PATCHES, TYPE IV, 12 INCH (SPECIAL) (SQ YD)	SAW CUTS (FT)	TIE BARS 3/4" TRANVERSE (EACH) RURAL	TIE BARS 3/4" LONGITUDINAL (EACH) RURAL	PATCHING REINFORCEMENT (SQ. YD) RURAL
								RURAL	RURAL	RURAL	RURAL	RURAL	RURAL	RURAL
								X1700052	X1700079	X1700080	44213200	44213204	44213204	44213000
I-57 (NB) CHAMPAIGN COUNTY														
245.234	1020+53	NBDL	6	12	8.00	2		8.00			54			8.00
245.160	1016+63						SN 010-0156 (THOMASBORO)							
246.202	1071+64	NBDL	8	12	10.67	2		10.67			40	44		10.67
246.205	1071+80	NBDL	8	12	10.67	2		10.67			40	44		10.67
246.217	1072+43	NBDL	8	12	10.67	2		10.67			40	44		10.67
246.998	1113+67	NBDL	10	12	13.33	2		13.33			44	44		13.33
246.998	1113+67	NBPL	10	12	13.33	2		13.33			44	44		13.33
247.221	1125+45	NBDL	8	12	10.67	2	NEAR RAILROAD BRIDGE	10.67			40	44		10.67
247.675	1149+42	NBDL	6	12	8.00	2		8.00			36	44		8.00
247.803	1156+18	NBDL	8	12	10.67	2		10.67			40	44		10.67
248.444	1190+02	NBDL	6	12	8.00	2		8.00			36	44		8.00
248.445	1190+07	NBDL	8	12	10.67	2		10.67			40	44		10.67
248.769	1207+18	NBDL	10	12	13.33	2		13.33			44	44		13.33
248.770	1207+23	NBPL	10	12	13.33	2		13.33			44	44		13.33
249.020	1220+43	NBDL	10	12	13.33	2		13.33			44	44		13.33
I-57 (SB) CHAMPAIGN COUNTY														
244.482	980+83	SBDL	6	12	8.00	2		8.00			36	44		8.00
244.506	982+09	SBPL	8	12	10.67	2		10.67			40	44		10.67
246.937	1110+45	SBDL	6	12	8.00	2		8.00			36	44		8.00
246.956	1111+45	SBDL	6	12	8.00	2		8.00			36	44		8.00
247.251	1127+03	SBDL	12	12	16.00	3	Approach Pavement SN 0100165?		16.00		48	44		16.00
249.477	1244+56	SBDL	8	12	10.67	2		10.67			40	44		10.67
249.608	1251+48	SBDL	20	12	26.67	4			26.67		64	44	7	26.67
249.635	1252+91	SBDL	12	12	16.00	3			16.00		48	44		16.00
TOTAL					250.67			192.00	32.00	26.67	880.00	924.00	7.00	250.67
USE								192.00	32.00	27.00	880.00	924.00	7.00	251.00

MODEL: \\MODELNAME
FILE: \\MODELNAME
PROJECT: \\PROJECTNAME
OFFICE: \\OFFICENAME
DESIGNER: \\DESIGNERNAME
DRAWN: \\DRAWNNAME
CHECKED: \\CHECKEDNAME
DATE: \\DATE

USER NAME = leroyma	DESIGNED -	REVISED -
	DRAWN -	REVISED -
PLOT SCALE = 40.0000' / in.	CHECKED -	REVISED -
PLOT DATE = 10/18/2018	DATE -	REVISED -

**STATE OF ILLINOIS
DEPARTMENT OF TRANSPORTATION**

SCHEDULE OF QUANTITIES

SCALE: SHEET 2 OF 4 SHEETS STA. TO STA.

F.A.I. RTE.	SECTION	COUNTY	TOTAL SHEETS	SHEET NO.
57/72	D5 CM2019-9	*	18	13
* CHAMPAIGN/DOUGLAS			CONTRACT NO. 70D51	
ILLINOIS FED. AID PROJECT				

CLASS A (SPECIAL), 16"

LOG MILE	APPROX. STATION	LANE	LENGTH	WIDTH	SQ YD	TYPE	DESCRIPTION	CLASS A PATCHES TYPE II, 16 INCH (SPECIAL) (SQ YD)		CLASS A PATCHES TYPE IV, 16 INCH (SPECIAL) (SQ YD)		SAW CUTS (FT)		TIE BARS 3/4" TRANVERSE (EACH)		TIE BARS 3/4" LONGITUDINAL (EACH)		PATCHING REINFORCEMENT (SQ. YD)			
								RURAL	URBAN	RURAL	URBAN	RURAL	URBAN	RURAL	URBAN	RURAL	URBAN	RURAL	URBAN	RURAL	URBAN
								X1700081		X1700082		44213200		44213204		44213204		44213000		44213000	
I-72 (EB) Champaign COUNTY:																					
174.000	1551+20																				
173.881	1544+92	EBDL	6	12	8.00	2		8.00				36	44						8.00		
175.054	1606+85	EBDL	6	12	8.00	2		8.00				36	44						8.00		
175.220	1615+62	EBDL	6	12	8.00	2		8.00				36	44						8.00		
176.345	1675+02	EBDL	6	12	8.00	2		8.00				36	44						8.00		
177.133	1716+62	EBDL	6	12	8.00	2		8.00				36	44						8.00		
177.885	1756+33	EBDL	6	12	8.00	2		8.00				36	44						8.00		
178.114	1768+42	EBDL	6	12	8.00	2	URBAN LIMITS 1764+26		8.00			36	44							8.00	
178.306	1778+56	EBPL	6	12	8.00	2			8.00			36	44							8.00	
178.556	1791+76	EBDL	6	12	8.00	2			8.00			36	44							8.00	
179.217	1826+66	EBPL	6	12	8.00	2			8.00			36	44							8.00	
179.420	1837+38	EBDL	6	12	8.00	2			8.00			36	44							8.00	
179.490	1841+07	EBDL	8	12	10.67	2			10.67			40	44							10.67	
180.622	1900+84	EBDL	6	12	8.00	2			8.00			36	44							8.00	
180.624	1900+95	EBPL	6	12	8.00	2			8.00			36	44							8.00	
181.717	1958+66	EBDL	30	12	40.00	4				40.00		84	44		11					40.00	
181.717	1958+66	LOOP A	30	12	40.00	4				40.00		84	44		11					40.00	
I-72 (WB) Champaign COUNTY:																					
174.000	1551+20																				
173.600	1530+08	WBDL	6	12	8.00	2		8.00				36	44							8.00	
174.899	1598+67	WBDL	6	12	8.00	2		8.00				36	44							8.00	
174.978	1602+84	WBDL	6	12	8.00	2		8.00				36	44							8.00	
174.978	1602+84	WBPL	6	12	8.00	2		8.00				36	44							8.00	
175.328	1621+32	WBDL	70	12	93.33	4				93.33		164	44		24					93.33	
176.330	1674+23	WBDL	8	12	10.67	2		10.67				40	44							10.67	
178.327	1779+67	WBDL	6	12	8.00	2			8.00			36	44							8.00	
178.341	1780+41	WBDL	8	12	10.67	2			10.67			40	44							10.67	
180.210	1879+09	WBDL	8	12	10.67	2			10.67			40	44							10.67	
180.221	1879+67	WBDL	12	12	16.00	2			16.00			48	44							16.00	
180.261	1881+78	WBDL	6	12	8.00	2			8.00			36	44							8.00	
180.330	1885+43	WBDL	6	12	8.00	2			8.00			36	44							8.00	
180.330	1885+43	WBPL	6	12	8.00	2			8.00			36	44							8.00	
180.559	1897+52	WBPL	6	12	8.00	2			8.00			36	44							8.00	
180.565	1897+84	WBDL	6	12	8.00	2			8.00			36	44							8.00	
180.663	1903+01	WBPL	6	12	8.00	2			8.00			36	44							8.00	
180.663	1903+01	WBDL	6	12	8.00	2			8.00			36	44							8.00	
180.812	1910+88	WBDL	6	12	8.00	2			8.00			36	44							8.00	
182.248	1986+70	WBDL	6	12	8.00	2			8.00			36	44							8.00	
TOTAL					448.00			90.67	184.00	93.33	80.00	564.00	948.00	528.00	1012.00	24.00	22.00		184.00	264.00	
USE								91.00	184.00	94.00	80.00	564.00	948.00	528.00	1012.00	24.00	22.00		184.00	264.00	

MODEL: \\MODEL\NAME; FILE: NAME; PROJECT: 0570051; CADD: Data\Design\0570051; PATH: schedule.dgn

USER NAME = leroyma	DESIGNED -	REVISED -
	DRAWN -	REVISED -
PLOT SCALE = 40.0000 ' / in.	CHECKED -	REVISED -
PLOT DATE = 10/19/2018	DATE -	REVISED -

**STATE OF ILLINOIS
DEPARTMENT OF TRANSPORTATION**

SCHEDULE OF QUANTITIES			
SCALE:	SHEET 3	OF 4 SHEETS	STA. TO STA.

F.A.I. RTE.	SECTION	COUNTY	TOTAL SHEETS	SHEET NO.
57/72	D5 CM2019-9	*	18	14
* CHAMPAIGN/DOUGLAS		CONTRACT NO. 70D51		
ILLINOIS		FED. AID PROJECT		

CLASS B, 18"

LOG MILE	APPROX. STATION	LANE	LENGTH	WIDTH	SQ YD	TYPE	DESCRIPTION	CLASS B PATCHES, TYPE II, 18 INCH	SAW CUTS	DOWEL BARS 1 1/2"
								(SQ YD)	(FT)	(EACH)
								URBAN	URBAN	URBAN
I-57 (NB) Champaign COUNTY:								44201063	44213200	44201299
237.151	593+75	NBDL	6	12	8.00	2	BETWEEN RAMPS AT 1-74	8.00	48	20
I-57 (SB) Champaign COUNTY:										
237.775	626+70	SBDL	10	12	13.33	2		13.4	56	20
237.806	628+33	SBPL	6	12	8.00	2		8.00	48	20
TOTAL					29.33			29.40	152.00	60.00
USE								30.00	152.00	60.00

CLASS B, 12"

LOG MILE	APPROX. STATION	LANE	LENGTH	WIDTH	SQ YD	TYPE	DESCRIPTION	CLASS B PATCHES, TYPE IV, 12 INCH	SAW CUTS	TIE BARS 3/4" LONGITUDINAL (EACH)	DOWEL BARS 1 1/2" (EACH)	WELDED WIRE REINFORCEMENT (SQ. YD)
								(SQ YD)	(FT)	(EACH)	(EACH)	(SQ. YD)
								RURAL	RURAL	RURAL	RURAL	RURAL
US 36 (SB ENTRANCE TO I- 57) DOUGLAS COUNTY:								44201000	44213200	44213204	44201299	42000060
US 36/I-57	83+00	RAMP A	42	26	69.30		(ODD SHAPED, CADD FLOOD) SEE DETAIL	69.30	162	14	36	69.3
DOUGLAS COUNTY TOTAL					69.30			69.30	162.00	14	36	69.30
USE								70.00	162.00	14.00	36.00	70.00

MODEL: \\MODELNAME
FILE NAME: \\FILENAME
PROJECT: \\PROJECTNAME
DRAWN: \\DRAWNNAME
CHECKED: \\CHECKEDNAME
DATE: \\DATE

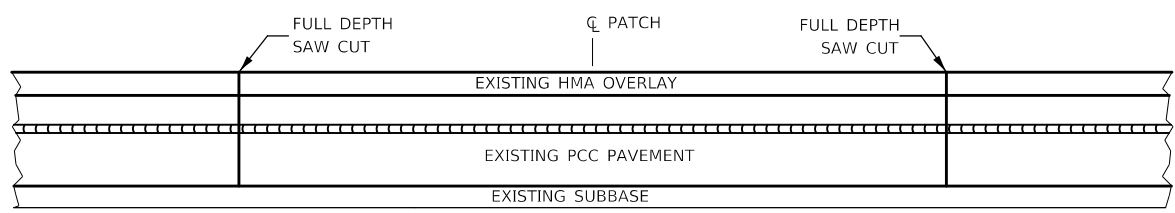
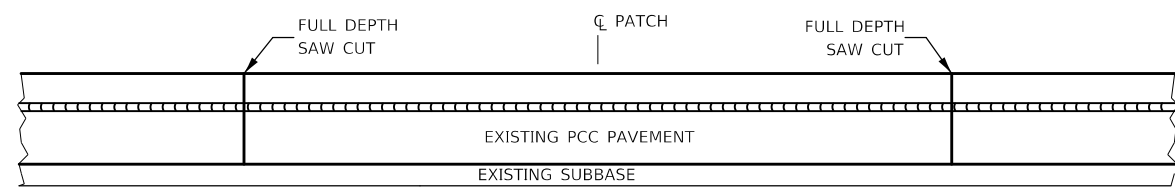
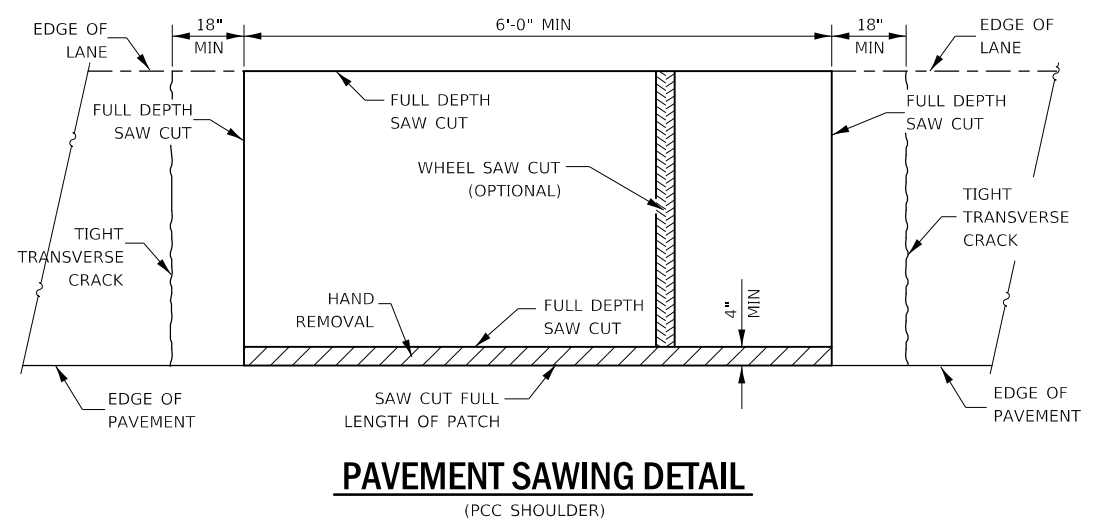
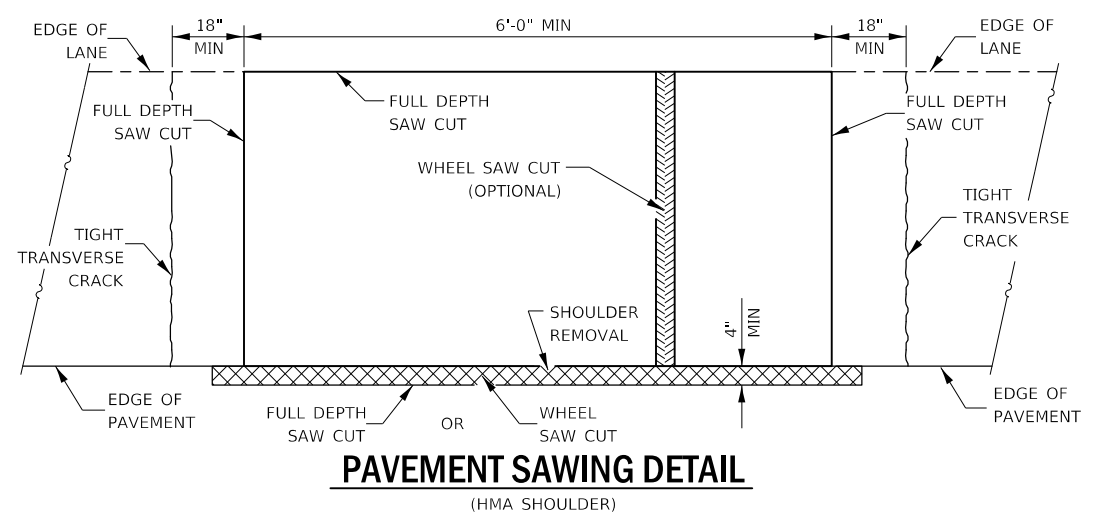
USER NAME = leroyma	DESIGNED -	REVISED -
	DRAWN -	REVISED -
PLOT SCALE = 40.0000' / in.	CHECKED -	REVISED -
PLOT DATE = 10/18/2018	DATE -	REVISED -

**STATE OF ILLINOIS
DEPARTMENT OF TRANSPORTATION**

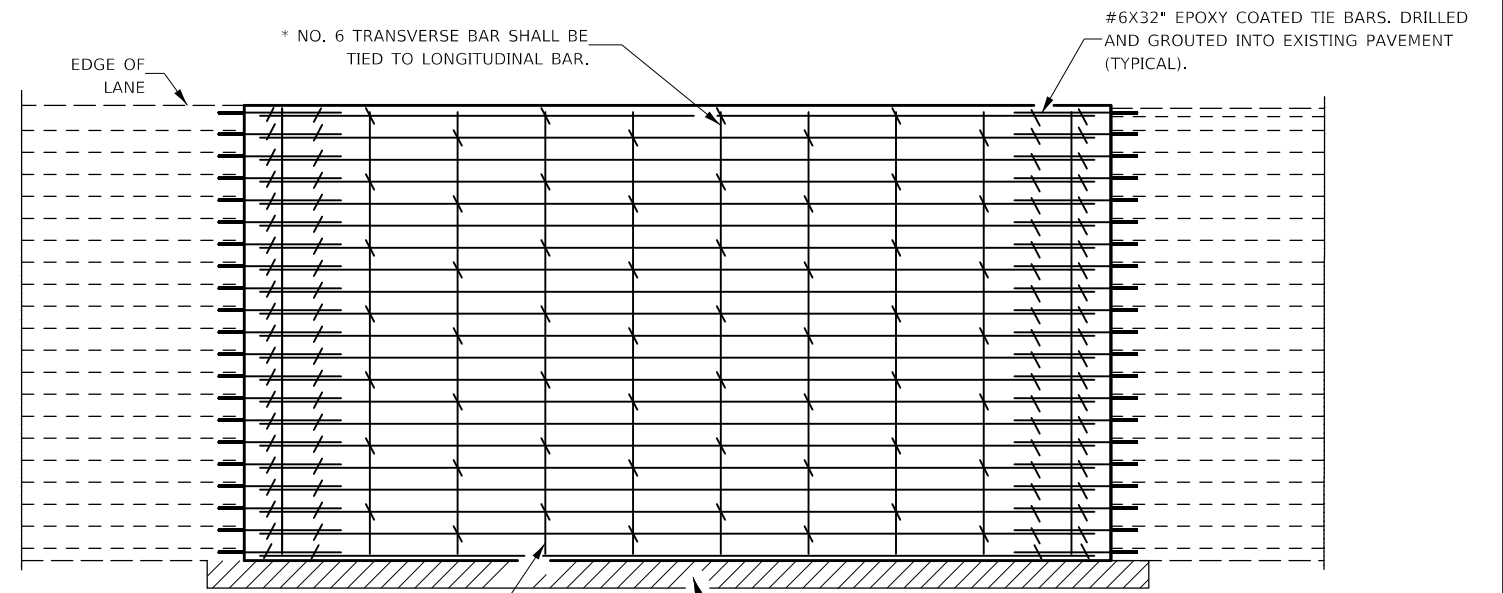
SCHEDULE OF QUANTITIES

SCALE: SHEET 4 OF 4 SHEETS STA. TO STA.

F.A.I. RTE.	SECTION	COUNTY	TOTAL SHEETS	SHEET NO.
57/72	D5 CM2019-9	*	18	15
* CHAMPAIGN/DOUGLAS			CONTRACT NO. 70D51	
		ILLINOIS	FED. AID PROJECT	

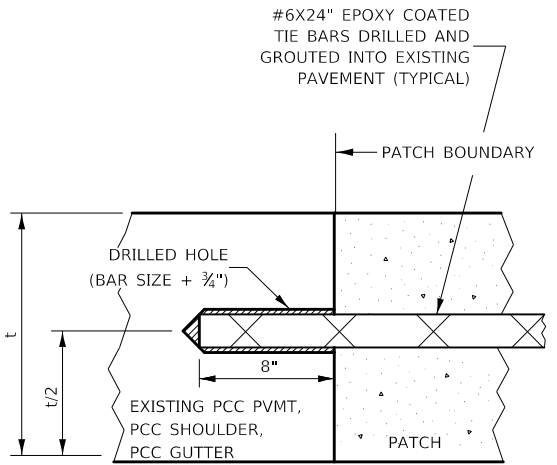


PAVEMENT SAWING DETAIL FOR CLASS A PATCHING (CRC PAVEMENT)



TRANSVERSE REBAR SHALL EXTEND TO OUTER LONGITUDINAL REBAR WHILE PROVIDING A MINIMUM 3" CLEARANCE FROM EXISTING PAVEMENT EDGE

PAVEMENT REINFORCEMENT DETAIL



LONGITUDINAL CONSTRUCTION JOINT

PATCHES MORE THAN 20' IN LENGTH SHALL BE TIED TO ADJACENT PAVEMENT, PCC SHOULDERS OR PCC CURB AND GUTTER WITH #6x24" EPOXY COATED TIE BARS AT 36" CENTERS.

NOTES:

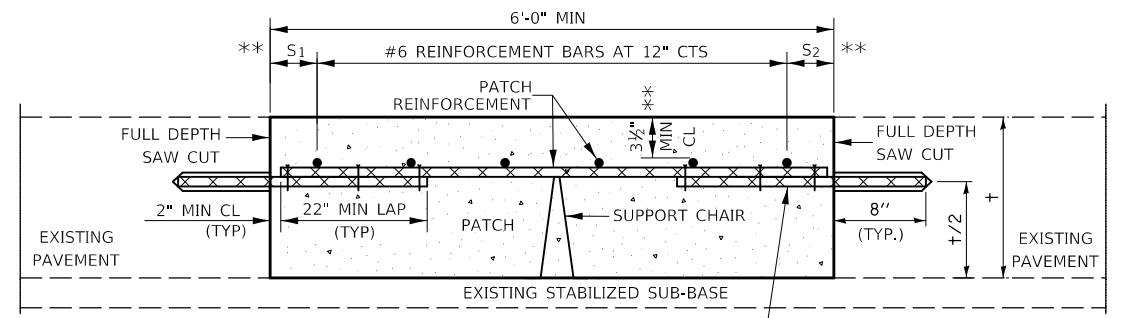
EXISTING LONGITUDINAL REINFORCEMENT SPACING: ±6 1/2".

SPACING OF NEW LONGITUDINAL REINFORCEMENT AND NEW LONGITUDINAL TIE BARS SHALL MATCH SPACING OF EXISTING REINFORCEMENT AND SHALL BE TIED TOGETHER WITH A MINIMUM OF TWO TIES PER BAR.

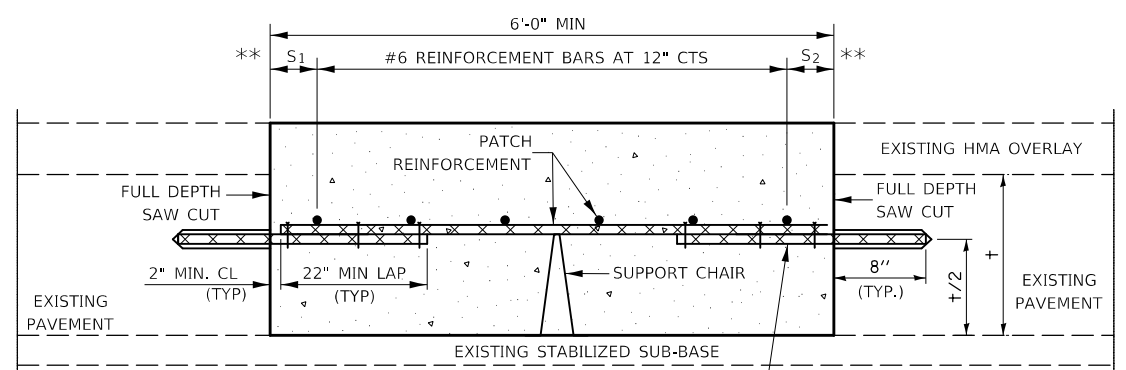
SUPPORT CHAIRS SHALL BE REQUIRED WHENEVER PATCH LENGTH EXCEEDS 6'-0"

* EVERY THIRD INTERSECTION MUST BE TIED. WHEN THE MINIMUM CLEARANCE CANNOT BE OBTAINED WITH THE TRANSVERSE REBAR ON TOP, THEN THE TRANSVERSE REBAR SHALL BE TIED TO THE BOTTOM OF THE LONGITUDINAL REBAR.

** VARIABLES WHERE S₁ AND S₂ ARE 2 1/2" MIN. AND 12" MAX.



WITHOUT HMA OVERLAY



WITH HMA OVERLAY

PATCHING DETAIL FOR CLASS A PATCHING (CRC PAVEMENT)

MODEL: \\MODELNAME; FILE NAME: \\FILENAME; PROJECT: \\PROJECT; OFFICE: \\OFFICE; DESIGNED BY: \\DESIGNEDBY; DRAWN BY: \\DRAWNBY; CHECKED BY: \\CHECKEDBY; DATE: \\DATE

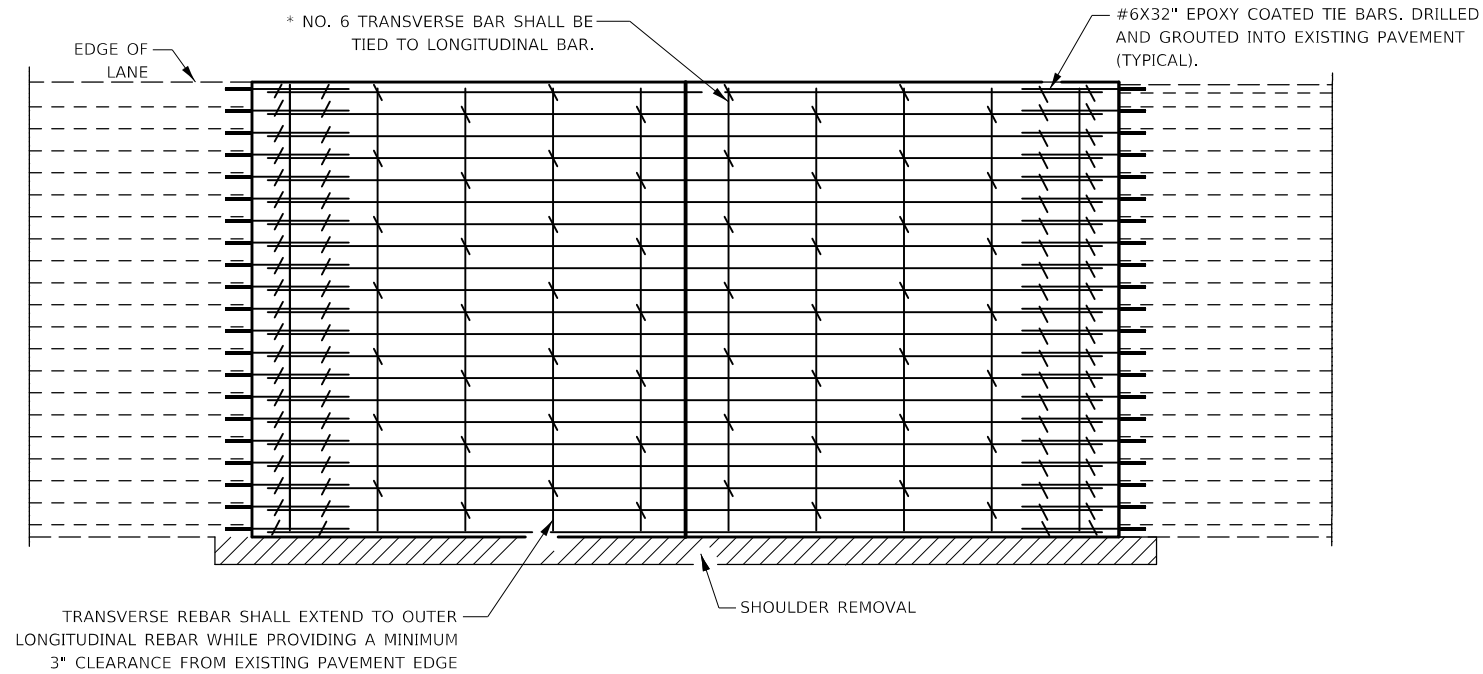
USER NAME = leroyma	DESIGNED -	REVISED -
PLOT SCALE = 100,0000' / in.	DRAWN -	REVISED -
PLOT DATE = 10/18/2018	CHECKED -	REVISED -
	DATE -	REVISED -

STATE OF ILLINOIS
DEPARTMENT OF TRANSPORTATION

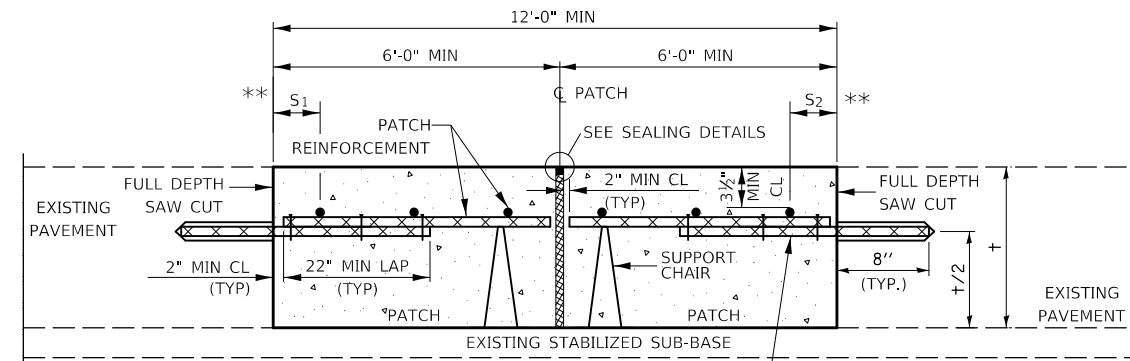
CLASS A PATCHING (SPECIAL)

SCALE: SHEET 1 OF 2 SHEETS STA. TO STA.

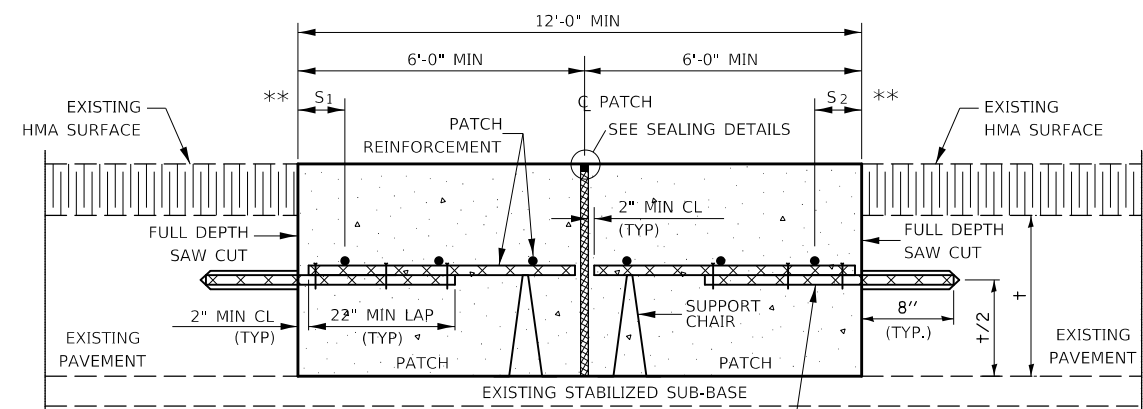
F.A.I. RTE.	SECTION	COUNTY	TOTAL SHEETS	SHEET NO.
57/72	D5 CM2019-9	*	18	16
*CHAMPAIGN/DOUGLAS		CONTRACT NO. 70D51		
ILLINOIS		FED. AID PROJECT		



PAVEMENT REINFORCEMENT DETAIL

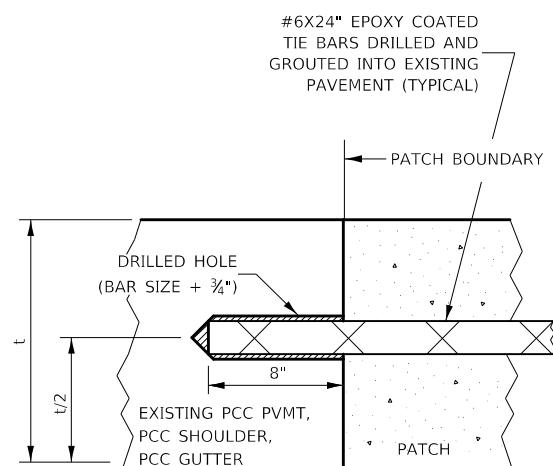


WITHOUT HMA OVERLAY



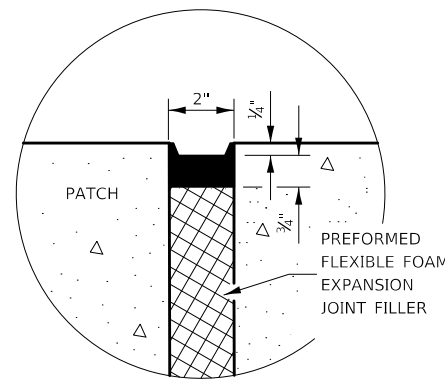
WITH HMA OVERLAY

CLASS A PATCH WITH EXPANSION JOINT

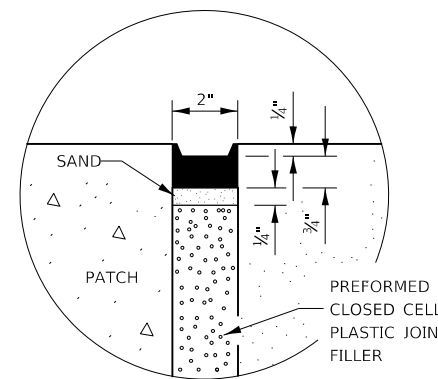


LONGITUDINAL CONSTRUCTION JOINT

PATCHES MORE THAN 20' IN LENGTH SHALL BE TIED TO ADJACENT PAVEMENT, PCC SHOULDERS OR PCC CURB AND GUTTER WITH #6X24" EPOXY COATED TIE BARS AT 36" CENTERS.



SEALING DETAIL



SEALING DETAIL

NOTES:

EXISTING LONGITUDINAL REINFORCEMENT SPACING; $\pm 6\frac{1}{2}$ ".

SPACING OF NEW LONGITUDINAL REINFORCEMENT AND NEW LONGITUDINAL TIE BARS SHALL MATCH SPACING OF EXISTING REINFORCEMENT AND SHALL BE TIED TOGETHER WITH A MINIMUM OF TWO TIES PER BAR.

SUPPORT CHAIRS SHALL BE REQUIRED WHENEVER PATCH LENGTH EXCEEDS 6'-0"

* EVERY THIRD INTERSECTION MUST BE TIED. WHEN THE MINIMUM CLEARANCE CANNOT BE OBTAINED WITH THE TRANSVERSE REBAR ON TOP, THEN THE TRANSVERSE REBAR SHALL BE TIED TO THE BOTTOM OF THE LONGITUDINAL REBAR.

** VARIABLES WHERE S₁ AND S₂ ARE 2 $\frac{1}{2}$ " MIN. AND 12" MAX.

MODEL: I:\MODEL\NAME: FILE NAME: PROJECT: I:\PROJECTS\0570051\CADD\DATA\Design\0570051\ch-detail.dgn

USER NAME = leroyma	DESIGNED -	REVISED -
	DRAWN -	REVISED -
PLOT SCALE = 100.0000' / in.	CHECKED -	REVISED -
PLOT DATE = 10/18/2018	DATE -	REVISED -

**STATE OF ILLINOIS
DEPARTMENT OF TRANSPORTATION**

CLASS A PATCHING (SPECIAL)

SCALE: SHEET 2 OF 2 SHEETS STA. TO STA.

F.A.I. RTE.	SECTION	COUNTY	TOTAL SHEETS	SHEET NO.
57/72	D5 CM2019-9	*	18	17
*CHAMPAIGN/DOUGLAS		CONTRACT NO. 70D51		
ILLINOIS		FED. AID PROJECT		

MODEL: \\MODELNAME
 FILE NAME: P:\IL\08\EBID\NTEC\Illinois.gov\PI\DOT\Documents\DOT_Offices\District 5\Projects\0570051\CADD\B\Detail\cls.dgn

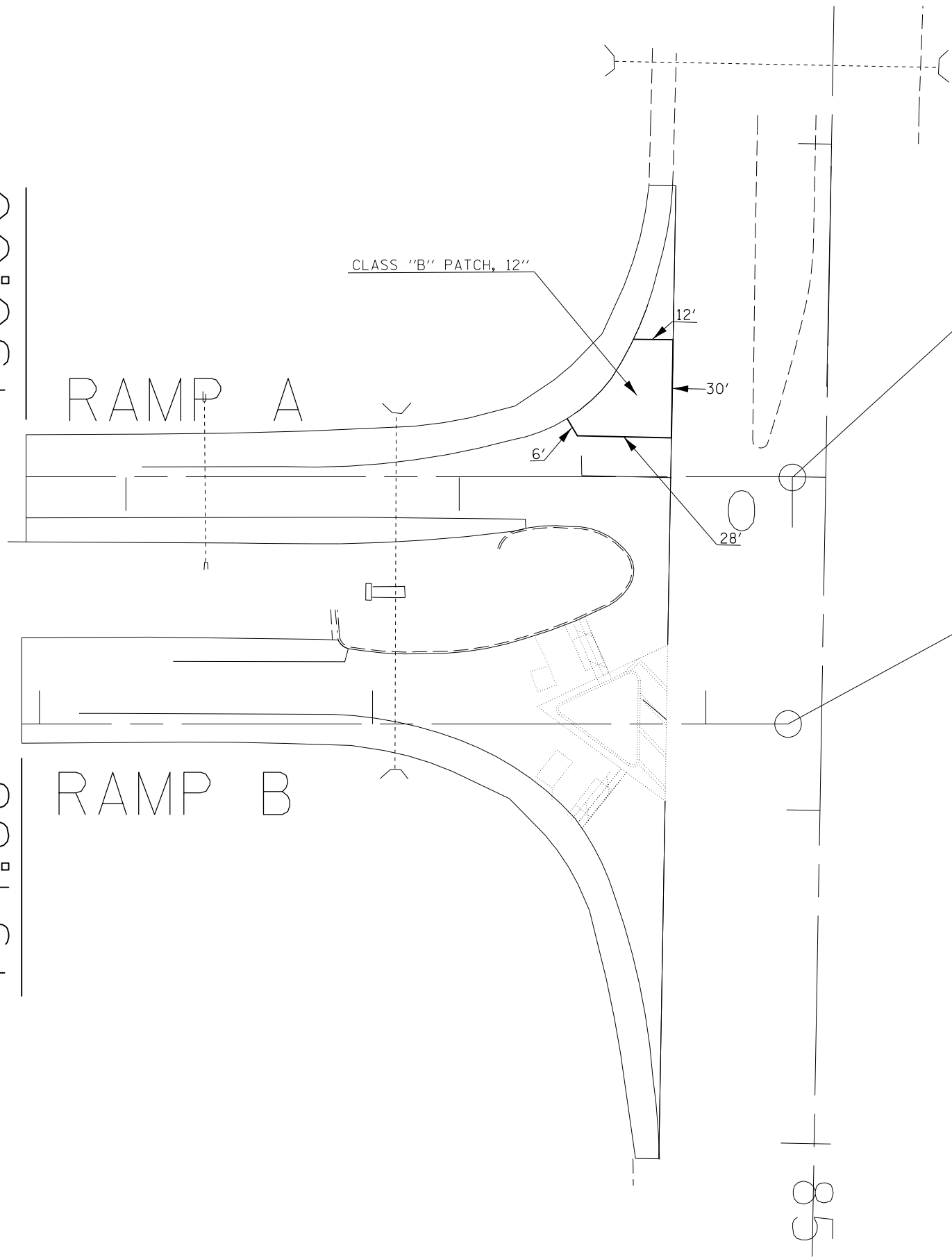
+30.00

+94.68

RAMP A

RAMP B

CLASS "B" PATCH, 12"



STA 0+00.00 (RAMP A) =
 STA 83+00.21 (U.S. RTE 36)

STA 118+24.69 (RAMP B) =
 STA 83+74.22 (U.S. RTE 36)

85

USER NAME = leroyma	DESIGNED -	REVISED -
	DRAWN -	REVISED -
PLOT SCALE = 40.0000 ' / in.	CHECKED -	REVISED -
PLOT DATE = 10/18/2018	DATE -	REVISED -

STATE OF ILLINOIS
 DEPARTMENT OF TRANSPORTATION

CLASS B PATCHING

SCALE: SHEET OF SHEETS STA. TO STA.

F.A.I. RTE.	SECTION	COUNTY	TOTAL SHEETS	SHEET NO.
57/72	D5 CM2019-9	*	18	18
*CHAMPAIGN/DOUGLAS			CONTRACT NO. 70D51	
ILLINOIS		FED. AID PROJECT		