

**GENERAL NOTES**

- ALL CONSTRUCTION SHALL BE DONE IN ACCORDANCE WITH THE DETAILS IN THE PLANS, THE SPECIAL PROVISIONS INCLUDED IN THE CONTRACT DOCUMENTS, AND THE LATEST EDITION OF THE FOLLOWING STATE OF ILLINOIS SPECIFICATIONS: "THE STANDARD SPECIFICATIONS FOR ROAD AND BRIDGE CONSTRUCTION" (REFERRED TO AS THE "STANDARD SPECIFICATIONS"), THE "SUPPLEMENTAL SPECIFICATIONS AND RECURRING SPECIAL PROVISIONS", THE "MANUAL ON UNIFORM TRAFFIC CONTROL DEVICES FOR STREETS AND HIGHWAYS", THE "MANUAL OF TEST PROCEDURES FOR MATERIALS" AND THE "STANDARD SPECIFICATIONS FOR WATER AND SEWER MAIN CONSTRUCTION IN ILLINOIS".
- UTILITIES SHOWN ON THE PLANS ARE APPROXIMATE AND THE VILLAGE DOES NOT GUARANTEE THEIR ACCURACY. THE CONTRACTOR SHALL BE RESPONSIBLE FOR THE PROTECTION OF ALL UNDERGROUND OR SURFACE UTILITIES, INCLUDING SPRINKLER SYSTEMS, EVEN THOUGH THEY MAY NOT BE SHOWN ON THE PLANS. THE CONTRACTOR SHALL ALSO VERIFY THE DEPTHS OF THE EXISTING UTILITIES IF NECESSARY TO VERIFY THAT GRADE CONFLICTS WILL NOT OCCUR WITH ANY PROPOSED UTILITIES PRIOR TO CONSTRUCTION AND ORDERING ANY MATERIALS. ANY RELOCATION OR LOWERING OF UTILITIES SHALL BE COORDINATED BY THE CONTRACTOR.
- THE CONTRACTOR SHALL NOTIFY THE VILLAGE PUBLIC WORKS ADMINISTRATOR AT LEAST 48 HOURS IN ADVANCE OF BEGINNING WORK TO OBTAIN VILLAGE UTILITY LOCATIONS.
- THE ENGINEER WILL FURNISH A RESIDENT ENGINEER (RE) TO ASSIST THE ENGINEER IN PROVIDING JOB-SITE OBSERVATION OF THE CONTRACTOR'S WORK. THE RE WILL PROVIDE BASE LINES, BENCHMARKS AND REFERENCE POINTS, ASSIST THE CONTRACTOR WITH INTERPRETATION OF THE PLANS AND SPECIFICATIONS, OBSERVE IN GENERAL IF THE CONTRACTOR'S WORK IS IN CONFORMITY WITH THE CONTRACT DOCUMENTS, AND MONITOR THE CONTRACTOR'S PROGRESS AS RELATED TO THE DATE OF COMPLETION, THE LIMITATIONS ON AUTHORITY AND RESPONSIBILITY OF THE ENGINEER SHALL ALSO APPLY TO THE ENGINEER'S CONSULTANTS, RESIDENT PROJECT REPRESENTATIVE AND ASSISTANTS.
- THE CONTRACTOR MAY OBTAIN MUNICIPAL WATER IN BULK, AT NO CHARGE, AS LONG AS THERE IS NOT A "WATERING BAN" IN EFFECT. THE INDISCRIMINATE USE OF FIRE HYDRANTS IS STRICTLY PROHIBITED. WATER FOR CONSTRUCTION SHALL BE METERED OR OTHERWISE ACCOUNTED FOR AND A DAILY LOG MAINTAINED. THE CONTRACTOR SHALL PROVIDE THE WATER TRUCK AND DRIVER REQUIRED TO OBTAIN AND TRANSPORT THIS WATER. THE VILLAGE RESERVES THE RIGHT TO RESTRICT OR REFUSE THE USE OF VILLAGE WATER IF DEEMED NECESSARY.
- THE CONTRACTOR SHALL CONTACT THE LOCAL AGENCY MATERIAL INSPECTOR AT LEAST 48 HOURS PRIOR TO ANY CONCRETE OR HOT-MIX ASPHALT MATERIAL DELIVERIES.
- STORM STRUCTURE OFFSET LOCATIONS ARE TO THE EDGE OF PAVEMENT IF THE STRUCTURE IS IN THE CURB LINE OR TO THE CENTER OF STRUCTURE IF THE STRUCTURE IS NOT IN THE CURBLINE.
- FRAME ELEVATIONS GIVEN ON THE PLANS ARE ONLY TO ASSIST THE CONTRACTOR IN DETERMINING THE APPROXIMATE OVERALL HEIGHT OF THE STRUCTURE. FRAMES ON ALL NEW STRUCTURES SHALL BE ADJUSTED TO THE FINAL ELEVATION OF THE AREA IN WHICH THEY ARE LOCATED AS PART OF COST OF THE STRUCTURE.
- A PORTABLE BATHROOM(S) SHALL BE PLACED ON THE JOB SITE(S) AND RELOCATED WHEN NECESSARY SO IT IS ACCESSIBLE TO WORKERS. IF WORK IS OCCURRING AT SEVERAL LOCATIONS, ONE PORTABLE BATHROOM SHALL BE PLACED AT EACH LOCATION WITHIN A REASONABLE DISTANCE FROM THE WORK AS DETERMINED BY THE ENGINEER.
- FOR STEEL BARS CERTIFICATION, PLEASE CONTACT IDOT BUREAU OF MATERIALS AT (847) 705-4337.
- ALL STRUCTURAL STEEL, REBAR AND DECORATIVE FENCING INCORPORATED IN THE WORK SHALL BE DOMESTICALLY MANUFACTURED OR PRODUCED AND FABRICATED.
- FRAMES AND GRATES OR LIDS THAT ARE REMOVED AS PART OF ADJUSTMENTS OR REMOVALS SHALL BE DELIVERED TO THE VILLAGE PUBLIC WORKS FACILITY: 1390 WILLOW ROAD, WINNETKA, IL 60093.
- SIGN PANELS THAT REQUIRE STORAGE AS PART OF RELOCATES OR REMOVALS SHALL BE DELIVERED TO THE VILLAGE PUBLIC WORKS FACILITY: 1390 WILLOW ROAD, WINNETKA, IL 60093 OR AS DIRECTED BY THE ENGINEER.
- THE CONTRACTOR SHALL CONTACT THE DISTRICT ONE TRAFFIC CONTROL SUPERVISOR AT 847-705-4470 A MINIMUM OF 72 HOURS IN ADVANCE OF BEGINNING WORK.
- THE ILLINOIS DEPARTMENT OF TRANSPORTATION IS NOT THE OWNER OF RECORD FOR THIS BRIDGE. THOSE SEEKING HISTORIC AS-BUILT OR OTHER RECORD PLANS AND DOCUMENTS MUST CONTACT THE OWNER OF RECORD TO MAKE ARRANGEMENTS FOR ACCESS TO THIS INFORMATION.
- DURING CONSTRUCTION, THE CONTRACTOR WILL BE PERMITTED TO LIMIT ON-STREET PARKING ALONG CHERRY ST AND OAK ST IN ORDER TO COMPLETE CONSTRUCTION OPERATIONS. NO PARKING SPACES ON LINCOLN AVE SHALL BE USED FOR CONSTRUCTION OPERATIONS. THE CONTRACTOR WILL BE REQUIRED TO COORDINATE WITH THE MUNICIPALITY A MINIMUM OF 48 HOURS IN ADVANCE. IT WILL BE THE RESPONSIBILITY OF THE CONTRACTOR TO PLACE ADVANCE SIGNS TO ALERT RESIDENTS AND COMMUTERS OF THE CONSTRUCTION WORK. THE PLACEMENT OF THESE SIGNS SHALL TAKE PLACE 48 HOURS IN ADVANCE IN ORDER TO ALLOW SUFFICIENT TIME FOR RESIDENTS AND GENERAL PUBLIC TO REVISE THEIR PARKING PATTERNS.
- ACCESS TO PRIVATE DRIVEWAYS SHALL BE PROVIDED AT ALL TIMES EXCEPT DURING ACTUAL CONSTRUCTION ADJACENT THERE TO.
- THE CONTRACTOR SHALL PROTECT THE EXISTING BIKE TRAIL DURING CONSTRUCTION.
- EXTRA CAUTION SHALL BE TAKEN TO PROTECT THE SAFETY AND INTEGRITY OF MWRD FACILITIES. NO ACCESS HATCHES AND MANHOLE COVERS ON MWRD STRUCTURES AND MANHOLES WITHIN THE PROJECT AREA SHALL BE BURIED OR COVERED. NO DEBRIS SHALL ENTER MWRD STRUCTURES, SEWERS, OR FACILITIES. MWRD PERSONNEL SHALL HAVE 24 HOUR-A-DAY UNRESTRICTED ACCESS TO ALL MWRD FACILITIES.
- MWRD MANHOLES SHALL BE LOCATED, PROTECTED AND/OR ADJUSTED TO GRADE, IF NECESSARY. PRIOR AUTHORIZATION IS REQUIRED TO MAKE ANY STRUCTURAL MODIFICATIONS, INCLUDING MANHOLE FRAME AND LID ADJUSTMENTS. AUTHORIZATION MAY BE OBTAINED BY CONTACTING MR. ED STAUDACHER, MANAGING ENGINEER, AT (847) 588-4319. IF MWRD FACILITIES ARE REQUIRED TO BE LOCATED IN THE FIELD, PLEASE CONTACT MR. STEVE WHITEHEAD, SENIOR CIVIL ENGINEER, AT (847) 588-4080. IF ANY ADDITIONAL INFORMATION IS REQUIRED, PLEASE CONTACT MR. JOE SCHUESSLER, PRINCIPAL CIVIL ENGINEER, AT (312) 751-3236.
- THE CONTRACTOR SHALL CONTACT THE VILLAGE FORESTER, JIM STIER 847-716-3535 72 HOURS IN ADVANCE OF TREE PRUNING AND/OR TREE REMOVAL.
- TREE REMOVAL SHALL BE APPROVED BY THE ENGINEER PRIOR TO REMOVAL.

**RAILROAD NOTES**

- WITHIN THESE NOTES, THE UNION PACIFIC RAILROAD SHALL BE REFERRED TO AS THE "RAILROAD".
- A CONTRACTOR'S RIGHT-OF-ENTRY PERMIT IS REQUIRED BEFORE ANY WORK CAN COMMENCE ON RAILROAD PROPERTY. THE COST TO OBTAIN THIS PERMIT SHALL BE CONSIDERED INCIDENTAL TO THE PROJECT.
- NO DISRUPTIONS OF RAILROAD OPERATIONS WILL BE PERMITTED.
- IT IS THE CONTRACTOR'S RESPONSIBILITY TO COORDINATE WITH THE UNION PACIFIC RAILROAD WHENEVER CONSTRUCTION ACTIVITY IS WITHIN 25 FEET OF THE RAILROAD RIGHT-OF-WAY. THE CONTRACTOR SHALL RETAIN FLAGMEN EMPLOYED AND DESIGNATED BY THE UNION PACIFIC RAILROAD TO MONITOR ON-COMING TRAIN TRAFFIC, AND ADVISE CONTRACTOR PERSONNEL WHEN ACTIVITY ON OR NEAR THE RAILROAD RIGHT-OF-WAY MAY PROCEED. THIS ITEM WILL BE PAID FOR ACCORDING TO ARTICLE 107.12 AND WILL BE REIMBURSED ACCORDING TO ARTICLE 109.05.
- ALL WORK WITHIN 25 FEET OF THE NEAREST TRACK WILL REQUIRE A RAILROAD FLAGMAN. TO SCHEDULE A FLAGMAN FOR WORK ON A COMMUTER LINE, CALL CANDICE MILLER AT (312) 496-4738. A MINIMUM 72 HOURS IN ADVANCE OF START OF WORK. TO SCHEDULE A FLAGMAN FOR WORK ON FREIGHT LINES, CALL DARYL CLARK AT (708) 649-5273, A MINIMUM OF 72 HOURS IN ADVANCE OF START OF WORK.
- WORK WINDOWS WITHIN THE 25 FOOT ZONE ARE ONLY AVAILABLE FROM 9:00 AM - 3:00 PM, MONDAY THROUGH FRIDAY. NIGHT WORK WINDOWS ARE AVAILABLE FROM 8:00 PM - 4:00 AM. PLEASE PROVIDE AT LEAST 72 HOURS OF ADDITIONAL NOTICE WHEN REQUESTING TO WORK AT NIGHT TO ENSURE APPROPRIATE FLAGGING COVERAGE. EXTENDED WORK WINDOWS MAY BE AVAILABLE ON THE WEEKENDS, NOT WITHSTANDING THE FORGOING, DUE TO INTERSTATE FREIGHT TRAIN AND COMMUTER PASSENGER TRAIN OPERATIONS AND SCHEDULES ALL WORK WINDOWS WITHIN THE TIMES LISTED ABOVE ARE SUBJECT TO ON SITE UNILATERAL ADJUSTMENT OR DENIAL FROM THE RAILROAD'S LOCAL FIELD MANAGER AND/OR CORRIDOR MANAGER. THIS MAY RESULT IN DENIAL OR ADJUSTMENT OF ACCESS FOR ANY AND ALL CONTRACTORS, SUBCONTRACTORS AND MATERIAL MEN DURING WORK WINDOWS.
- NO UN-USED WORK EQUIPMENT WILL BE ALLOWED TO REMAIN ON THE RAILROAD'S COMMUTER PLATFORM IF PRESENT.
- RAILROAD UTILITIES ARE NOT INCLUDED UNDER JULIE. CALL CANDICE MILLER AT (312) 496-4738 FOR LOCATES.
- FIBER OPTICS MAY BE PRESENT IN THIS AREA. CALL (800) 336-9193 TO COORDINATE ANY REQUIRED PROTECTION OR RELOCATION, PRIOR TO CONSTRUCTION.
- RAILROAD REVIEW AND APPROVAL OF SHORING, DEMOLITION, ERECTION, AND FALSEWORK IS REQUIRED.
- ERECTION OVER THE RAILROAD'S RIGHT-OF-WAY SHALL BE DESIGNED TO CAUSE NO INTERRUPTIONS TO RAILROAD'S OPERATIONS. ERECTION OVER THE RAILROAD'S TRACK SHALL BE DEVELOPED SUCH THAT IT ENABLES THE TRACKS(S) TO REMAIN OPEN TO TRAIN TRAFFIC PER RAILROAD'S REQUIREMENTS.
- FALSEWORK CLEARANCE SHALL COMPLY WITH THE RAILROAD'S MINIMUM CONSTRUCTION CLEARANCE ENVELOPE.
- FOR RAILROAD COORDINATION PLEASE REFER TO THE RAILROAD MINIMUM REQUIREMENTS AS PART OF SPECIAL PROVISIONS.
- THE CONTRACTOR MUST SUBMIT A PROPOSED METHOD OF EROSION AND SETTLEMENT CONTROL AND HAVE THE METHOD APPROVED BY THE RAILROAD.
- THE ELEVATION OF THE EXISTING TOP-OF-RAIL PROFILE SHALL BE SURVEYED BEFORE BEGINNING CONSTRUCTION.
- SIDEWALK CLOSED SIGNAGE SHALL BE INSTALLED AT THE CLOSED STAIR ENTRANCE ON THE PLATFORMS FOR THE DURATION OF OAK STREET BRIDGE CONSTRUCTION.

**THE FOLLOWING IS A SUGGESTED STAGING SEQUENCE FOR EACH BRIDGE CLOSURE:**

- ESTABLISH DETOUR ROUTE AND OTHER TRAFFIC CONTROL ITEMS.
- ESTABLISH EROSION CONTROL MEASURES.
- DEMOLISH AND RECONSTRUCT BRIDGE (SEE BRIDGE PLANS FOR SPECIFIC STAGING).
- CONSTRUCT STORM SEWER.
- REMOVE EXISTING PAVEMENT, CURB AND SIDEWALK AND GUARDRAIL.
- CONSTRUCT AGGREGATE SUBGRADE IMPROVEMENTS AND CURB AND GUTTER.
- CONSTRUCT HMA PAVEMENT CONNECTOR.
- CONSTRUCT SIDEWALK.
- COMPLETE PARKWAY RESTORATION.
- INSTALL REQUIRED PAVEMENT MARKINGS.
- REOPEN ROADWAY.
- COMPLETE PUNCH LIST ITEMS.
- REMOVE TEMPORARY EROSION CONTROL ITEMS ONCE SOD ESTABLISHES.

**CONSTRUCTION STAGING NOTES**

- THE CONTRACTOR SHALL SUBMIT A PREPLANNED SEQUENCE OF WORK AT THE PRECONSTRUCTION CONFERENCE FOR REVIEW AND APPROVAL. WORK SHALL BE SCHEDULED TO MINIMIZE INCONVENIENCE TO RESIDENTS AND BUSINESSES AND TO MAINTAIN A REASONABLE LEVEL OF CONSTRUCTION EFFICIENCY. THE ENGINEER RESERVES THE RIGHT TO RESTRICT WORK ON ANY ROADWAY SEGMENT IF CONSTRUCTION OPERATIONS ON A PREVIOUS SEGMENT ARE UNACCEPTABLE; TRAFFIC CONTROL OPERATIONS BECOME UNACCEPTABLE; OR AN EROSION CONTROL DEFICIENCY EXISTS.
- THE ENGINEER SHALL BE NOTIFIED 48 HOURS IN ADVANCE OF ANY CHANGES TO CONSTRUCTION STAGING. ALL CHANGES TO CONSTRUCTION STAGING MUST BE APPROVED BY THE ENGINEER PRIOR TO IMPLEMENTATION.
- PROVIDE 72 HOUR ADVANCED NOTIFICATION TO THE ENGINEER, CITY, POLICE AND FIRE PRIOR TO ROAD CLOSURE.
- COORDINATE ALL IMPROVEMENTS WITH THE UNION PACIFIC RAILROAD AND METRA RAIL.
- THE CHERRY STREET BRIDGE SHALL BE REOPENED TO TRAFFIC BEFORE CONSTRUCTION ON OAK STREET BRIDGE BEGINS.
- THE EXISTING BIKE TRAIL SHALL REMAIN OPEN TO TRAFFIC ON ALL SATURDAYS AND SUNDAYS. THE EXISTING BIKE TRAIL SHALL REMAIN OPEN TO TRAFFIC ON ALL WEEKDAYS EXCEPT DURING BRIDGE DEMOLITION AND BEAM SETTING. DURING BRIDGE DEMOLITION AND BEAM SETTING THE BIKE TRAIL SHALL BE OPEN TO TRAFFIC AT THE END OF EACH DAY. SIGNS SHALL BE PLACED 1 WEEK PRIOR TO EACH DAYTIME TRAIL CLOSURE.

TRAIL CLOSED AT  
Oak/Cherry St  
ON  
XX-XX-XX

THE SIGN SHALL BE ORANGE WITH 4 INCH BLACK LETTERS AND THE COST INCLUDED IN TRAFFIC CONTROL AND PROTECTION (SPECIAL).

- THE CONTRACTOR MAY USE THE INTERSECTION OF OAK STREET AND LINCOLN AVENUE FOR STAGING OF MATERIALS FOR THE OAK STREET BRIDGE. IF STAGING IMPEDES ON TRAFFIC LANES, THE CONTRACTOR SHALL PROVIDE A TRAFFIC CONTROL PLAN OR REVISE THE DETOUR ROUTE ACCORDINGLY. ANY REVISIONS TO TRAFFIC CONTROL OR DETOUR PLAN SHALL BE APPROVED BY THE ENGINEER PRIOR TO IMPLEMENTATION.

STATE OF ILLINOIS - PROFESSIONAL DESIGN FIRM  
LICENSE NO. - 184-00121 - EXPIRES 4/30/2019  
642Jem 1/3/2019 10:49:34 AM



REV 01-04-19

DESIGNED - JDM	REVISED - 01-04-19
DRAWN - UKB	REVISED -
CHECKED - DJS	REVISED -
DATE - 10-09-18	FILE - 150754SHT_GenNotes.dgn

STATE OF ILLINOIS  
DEPARTMENT OF TRANSPORTATION

GENERAL NOTES, RAILROAD NOTES  
AND CONSTRUCTION STAGING NOTES

MUN. RTE.	SECTION	COUNTY	TOTAL SHEETS	SHEET NO.
•	15-00104-00-BR	COOK	93	3
• 3050A/3045		CONTRACT NO. 61F43		
FED. ROAD DIST. NO. 1 [ILLINOIS] FED. AID PROJECT				

SCALE: NONE

STA. TO STA.

## SUMMARY OF QUANTITIES

CODE NO.	ITEM	UNIT	TOTAL QUANTITY	CONSTRUCTION CODE	
				CHERRY ST 80% FED 20% LOCAL	OAK ST 80% FED 20% LOCAL
				0013 BRIDGE URBAN	0013 BRIDGE URBAN
20101000	TEMPORARY FENCE	FOOT	60		60
20100110	TREE REMOVAL (6 TO 15 UNITS DIAMETER)	UNIT	10		10
20101100	TREE TRUNK PROTECTION	EACH	4	3	1
20100210	TREE REMOVAL (OVER 15 UNITS DIAMETER)	UNIT	18		18
20101200	TREE ROOT PRUNING	EACH	4	3	1
* 20101300	TREE PRUNING (1 TO 10 INCH DIAMETER)	EACH	5	3	2
* 20101350	TREE PRUNING (OVER 10 INCH DIAMETER)	EACH	8	5	3
20200100	EARTH EXCAVATION	CU YD	205	102	103
20201200	REMOVAL AND DISPOSAL OF UNSUITABLE MATERIAL	CU YD	184	99	85
20800150	TRENCH BACKFILL	CU YD	31	9	22
21001000	GEOTECHNICAL FABRIC FOR GROUND STABILIZATION	SQ YD	490	259	231
21101615	TOPSOIL FURNISH AND PLACE, 4"	SQ YD	175	105	70
25000400	NITROGEN FERTILIZER NUTRIENT	POUND	3	2	1
25000500	PHOSPHORUS FERTILIZER NUTRIENT	POUND	3	2	1
25000600	POTASSIUM FERTILIZER NUTRIENT	POUND	3	2	1
25200110	SODDING, SALT TOLERANT	SQ YD	175	105	70
25200200	SUPPLEMENTAL WATERING	UNIT	2	1	1

\* INDICATES SPECIALTY ITEM  
 S INDICATES CONSTRUCTION CODE 0042 TRAINEES

CODE NO.	ITEM	UNIT	TOTAL QUANTITY	CONSTRUCTION CODE	
				CHERRY ST 80% FED 20% LOCAL	OAK ST 80% FED 20% LOCAL
				0013 BRIDGE URBAN	0013 BRIDGE URBAN
28000250	TEMPORARY EROSION CONTROL SEEDING	POUND	5	3	2
28000400	PERIMETER EROSION BARRIER	FOOT	245	185	60
28000510	INLET FILTERS	EACH	10	5	5
28001100	TEMPORARY EROSION CONTROL BLANKET	SQ YD	175	105	70
30300001	AGGREGATE SUBGRADE IMPROVEMENT	CU YD	164	87	77
30300112	AGGREGATE SUBGRADE IMPROVEMENT 12"	SQ YD	490	259	231
35101600	AGGREGATE BASE COURSE, TYPE B 4"	SQ YD	364	138	226
40600290	BITUMINOUS MATERIALS (TACK COAT)	POUND	300	140	160
42000070	PAVEMENT CONNECTOR (HMA) FOR BRIDGE APPROACH SLAB	SQ YD	437	202	235
42001300	PROTECTIVE COAT	SQ YD	364	138	226
42400200	PORTLAND CEMENT CONCRETE SIDEWALK 5 INCH	SQ FT	2,120	840	1,280
42400800	DETECTABLE WARNINGS	SQ FT	121	34	87
44000100	PAVEMENT REMOVAL	SQ YD	388	268	120
44000500	COMBINATION CURB AND GUTTER REMOVAL	FOOT	320	140	180
44000600	SIDEWALK REMOVAL	SQ FT	1,685	655	1,030

\* INDICATES SPECIALTY ITEM  
 S INDICATES CONSTRUCTION CODE 0042 TRAINEES

STATE OF ILLINOIS - PROFESSIONAL DESIGN FIRM  
 LICENSE NO. 184-001211 EXPIRES 4/30/2019  
 6421am 1/31/2019  
 ...\\pilotdr\pilotdr-BW-Default.plt  
 ...\\pilotdr\pilotdr-BW-Default.plt  
 I:\CrystalLake\WINNE\150754-Oak Cherry Bridge Rehab\CADD\Drawings\Phase 2\150754SHT\_S00.dgn

**BAXTER & WOODMAN**  
 Consulting Engineers

DESIGNED - JDM	REVISED - 01-04-19
DRAWN - UKB	REVISED -
CHECKED - DJS	REVISED -
DATE - 10-09-18	FILE - 150754SHT_S00.dgn

**STATE OF ILLINOIS  
 DEPARTMENT OF TRANSPORTATION**

### SUMMARY OF QUANTITIES

SCALE: NONE      STA.      TO STA.



REV 01-04-19

MUN. RTE.	SECTION	COUNTY	TOTAL SHEETS	SHEET NO.
•	15-00104-00-BR	COOK	93	4
• 3050A/3045		CONTRACT NO. 61F43		
FED. ROAD DIST. NO. 1   ILLINOIS   FED. AID PROJECT				

## SUMMARY OF QUANTITIES

CODE NO.	ITEM	UNIT	TOTAL QUANTITY	CONSTRUCTION CODE	
				CHERRY ST 80% FED 20% LOCAL	OAK ST 80% FED 20% LOCAL
				001.3 BRIDGE URBAN	001.3 BRIDGE URBAN
50101700	REMOVAL OF EXISTING SUPERSTRUCTURES NO. 1	EACH	1	1	
50101800	REMOVAL OF EXISTING SUPERSTRUCTURES NO. 2	EACH	1		1
50102400	CONCRETE REMOVAL	CU YD	162	70	92
50157300	PROTECTIVE SHIELD	SQ YD	1,464	626	838
50200100	STRUCTURE EXCAVATION	CU YD	482	227	255
50300225	CONCRETE STRUCTURES	CU YD	194.0	96.1	97.9
50300255	CONCRETE SUPERSTRUCTURE	CU YD	154.8	67.7	87.1
50300260	BRIDGE DECK GROOVING	SQ YD	1,435	585	850
50300300	PROTECTIVE COAT	SQ YD	2,350	1,000	1,350
50301350	CONCRETE SUPERSTRUCTURE (APPROACH SLAB)	CU YD	127.6	50.2	77.4
50400305	PRECAST PRESTRESSED CONCRETE DECK BEAMS (17" DEPTH)	SQ FT	7,550		7,550
50400405	PRECAST PRESTRESSED CONCRETE DECK BEAMS (21" DEPTH)	SQ FT	5,715	5,715	
* 50606701	CLEANING AND PAINTING STRUCTURAL STEEL, LOCATION 1	L SUM	1		1
50800205	REINFORCEMENT BARS, EPOXY COATED	POUND	115,890	53,530	62,360
51500100	NAME PLATES	EACH	2	1	1

\* INDICATES SPECIALTY ITEM  
S INDICATES CONSTRUCTION CODE 0042 TRAINEES

CODE NO.	ITEM	UNIT	TOTAL QUANTITY	CONSTRUCTION CODE	
				CHERRY ST 80% FED 20% LOCAL	OAK ST 80% FED 20% LOCAL
				001.3 BRIDGE URBAN	001.3 BRIDGE URBAN
52000110	PREFORMED JOINT STRIP SEAL	FOOT	144	64	80
52100520	ANCHOR BOLTS, 1"	EACH	8	4	4
55100300	STORM SEWER REMOVAL 8"	FOOT	101	17	84
59100100	GEOCOMPOSITE WALL DRAIN	SQ YD	122	50	72
60100060	CONCRETE HEADWALLS FOR PIPE DRAINS	EACH	8	4	4
60200105	CATCH BASINS, TYPE A, 4'-DIAMETER, TYPE 1 FRAME, OPEN LID	EACH	2		2
60206905	CATCH BASINS, TYPE C, TYPE 1 FRAME, OPEN LID	EACH	1	1	
60234200	INLETS, TYPE A, TYPE 1 FRAME, OPEN LID	EACH	3	1	2
60250200	CATCH BASINS TO BE ADJUSTED	EACH	1	1	
60500050	REMOVING CATCH BASINS	EACH	4	1	3
60500060	REMOVING INLETS	EACH	3	1	2
60603800	COMBINATION CONCRETE CURB AND GUTTER, TYPE B-6.12	FOOT	248	128	120
* 66900200	NON-SPECIAL WASTE DISPOSAL	CU YD	157	78	79
* 66900530	SOIL DISPOSAL ANALYSIS	EACH	2	1	1
* 66901001	REGULATED SUBSTANCES PRE-CONSTRUCTION PLAN	L SUM	1.0	0.5	0.5

\* INDICATES SPECIALTY ITEM  
S INDICATES CONSTRUCTION CODE 0042 TRAINEES

STATE OF ILLINOIS - PROFESSIONAL DESIGN FIRM  
 LICENSE NO. - 184-001211 EXPIRES 4/30/2019  
 642/6m 1/31/2019  
 ... \plot\dr\pdf\bw\_default.plt  
 ... \phase2\pdfs\ISO154-BB\1.tbl  
 I:\CrystalLake\WISSE\ISO154-00k Cherry Bridge\Rehab\CADD\Drawings\Phase 2\ISO154SHT\_S00.dgn

<b>BAXTER &amp; WOODMAN</b> <small>Professional Engineers</small>	DESIGNED - JDM	REVISED - 01-04-19
	DRAWN - LKB	REVISED -
	CHECKED - DJS	REVISED -
	DATE - 10-09-18	FILE - ISO154SHT_S00.dgn

**STATE OF ILLINOIS  
DEPARTMENT OF TRANSPORTATION**

**SUMMARY OF QUANTITIES**

SCALE: NONE

STA. TO STA.

MUN. RTE.	SECTION	COUNTY	TOTAL SHEETS	SHEET NO.
*	15-00104-00-BR	COOK	93	5
* 3050A/3045		CONTRACT NO. 61F43		
FED. ROAD DIST. NO. 1 [ILLINOIS] FED. AID PROJECT				

1 REV 01-04-19

## SUMMARY OF QUANTITIES

CODE NO.	ITEM	UNIT	TOTAL QUANTITY	CONSTRUCTION CODE	
				CHERRY ST 80% FED 20% LOCAL	OAK ST 80% FED 20% LOCAL
				0013 BRIDGE URBAN	0013 BRIDGE URBAN
* 89502376	REBUILD EXISTING HANDHOLE	EACH	4	2	2
* 89502380	REMOVE EXISTING HANDHOLE	EACH	1		1
A2000112	TREE, ACER X FREEMANII AUTUMN BLAZE (AUTUMN BLAZE FREEMAN MAPLE), 1-1/2" CALIPER, BALLED AND BURLAPPED	EACH	2		2
Z0004552	APPROACH SLAB REMOVAL	SQ YD	325	150	175
Z0010400	CLEANING BRIDGE SEATS	SQ FT	580	258	322
Z0012754	STRUCTURAL REPAIR OF CONCRETE (DEPTH EQUAL TO OR LESS THAN 5 INCHES)	SQ FT	40		40
Z0013798	CONSTRUCTION LAYOUT	L SUM	1.0	0.5	0.5
Z0030850	TEMPORARY INFORMATION SIGNING	SQ FT	104	52	52
Z0046304	PIPE UNDERDRAINS FOR STRUCTURES 4"	FOOT	210	60	150
Z0048665	RAILROAD PROTECTIVE LIABILITY INSURANCE	L SUM	1.0	0.5	0.5
Z0056608	STORM SEWER (WATER MAIN REQUIREMENTS) 12 INCH	FOOT	118	42	76
Z0065704	BITUMINOUS COATED AGGREGATE SLOPEWALL 6"	SQ YD	105	45	60
Z0073410	TEMPORARY SUPPORT SYSTEM, LOCATION 1	EACH	4	4	
Z0073420	TEMPORARY SUPPORT SYSTEM, LOCATION 2	EACH	4		4
* Z0073510	TEMPORARY TRAFFIC SIGNAL TIMING	EACH	1		1
S Z0076600	TRAINEES	HOUR	500	250	250
S Z0076604	TRAINEES TRAINING PROGRAM GRADUATE	HOUR	500	250	250
X0323992	HELICAL GROUND ANCHORS	EACH	20	8	12
* X0326594	FLEXIBLE LIQUID TIGHT STAINLESS STEEL CONDUIT, 1-1/2" DIAMETER, 6 FOOT LENGTH	EACH	2		2

\* INDICATES SPECIALTY ITEM  
S INDICATES CONSTRUCTION CODE 0042 TRAINEES

CODE NO.	ITEM	UNIT	TOTAL QUANTITY	CONSTRUCTION CODE	
				CHERRY ST 80% FED 20% LOCAL	OAK ST 80% FED 20% LOCAL
				0013 BRIDGE URBAN	0013 BRIDGE URBAN
* X0327004	TEMPORARY WOOD POLE, 60 FT., CLASS 4	EACH	2		2
X0327980	PAVEMENT MARKING REMOVAL - WATER BLASTING	SQ FT	927	800	127
X1700019	SEGMENTED BLOCK WALL TO BE REMOVED AND REPLACED	SQ FT	30		30
X4240470	PORTLAND CEMENT CONCRETE SIDEWALK 10 INCH, SPECIAL	SQ FT	633	133	500
X5030305	CONCRETE WEARING SURFACE, 5"	SQ YD	1,500	643	857
58600101					
<del>X5860110</del>	GRANULAR BACKFILL FOR STRUCTURES	CU YD	185	75	110
X6026050	SANITARY MANHOLES TO BE ADJUSTED	EACH	3	2	1
* X6640304	CHAIN LINK FENCE TO BE REMOVED AND RE-ERECTED	FOOT	56	32	24
X7010216	TRAFFIC CONTROL AND PROTECTION, (SPECIAL)	L SUM	1.0	0.5	0.5
* X7830070	GROOVING FOR RECESSED PAVEMENT MARKING 5"	FOOT	1,244	548	696
* X7830074	GROOVING FOR RECESSED PAVEMENT MARKING 7"	FOOT	188		188
* X7830078	GROOVING FOR RECESSED PAVEMENT MARKING 13"	FOOT	582	312	270
* X7830090	GROOVING FOR RECESSED PAVEMENT MARKING 25"	FOOT	71	19	52
* X8250500	LIGHTING UNIT COMPLETE, SPECIAL	EACH	12		12
XX003067	CONCRETE BRIDGE RAIL (SPECIAL)	FOOT	280		280
XX004951	CONCRETE STAIRS	L SUM	1		1
XX006957	CONCRETE STAIRS AND SIDEWALK REMOVAL	L SUM	1		1

\* INDICATES SPECIALTY ITEM  
S INDICATES CONSTRUCTION CODE 0042 TRAINEES

1 REV 01-04-19

STATE OF ILLINOIS - PROFESSIONAL DESIGN FIRM  
 LICENSE NO. - 184-00121 - EXPIRES 7/30/2019  
 6421am 1/3/2019 12:44:49 PM  
 ...\\plotdrv\pdf-BW\_DeFault.plt  
 ...\\phase2-pdfs\150754-BRW.tbl  
 I:\CrystallLake\WINNE150754-Oak Cherry Bridge Rehab\CAD\Drawings\Phase 2\150754SHT\_500.dgn

<b>BAXTER &amp; WOODMAN</b> <small>Professional Engineers</small>	DESIGNED - JDM	REVISED - 01-04-19
	DRAWN - UKB	REVISED -
	CHECKED - DJS	REVISED -
	DATE - 10-09-18	FILE - 150754SHT_500.dgn

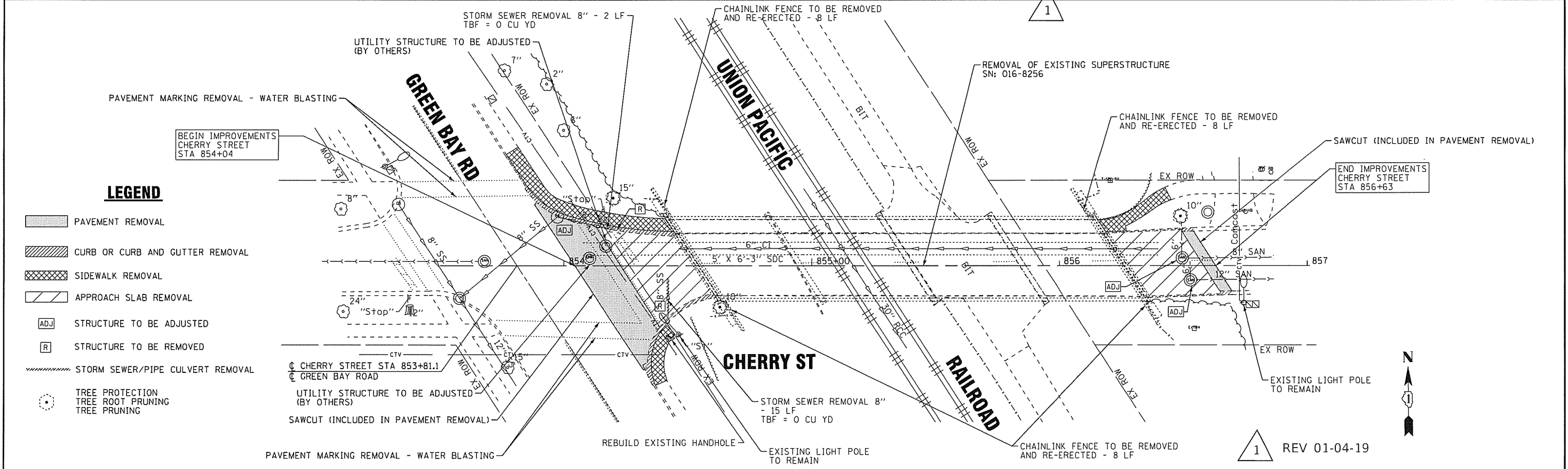
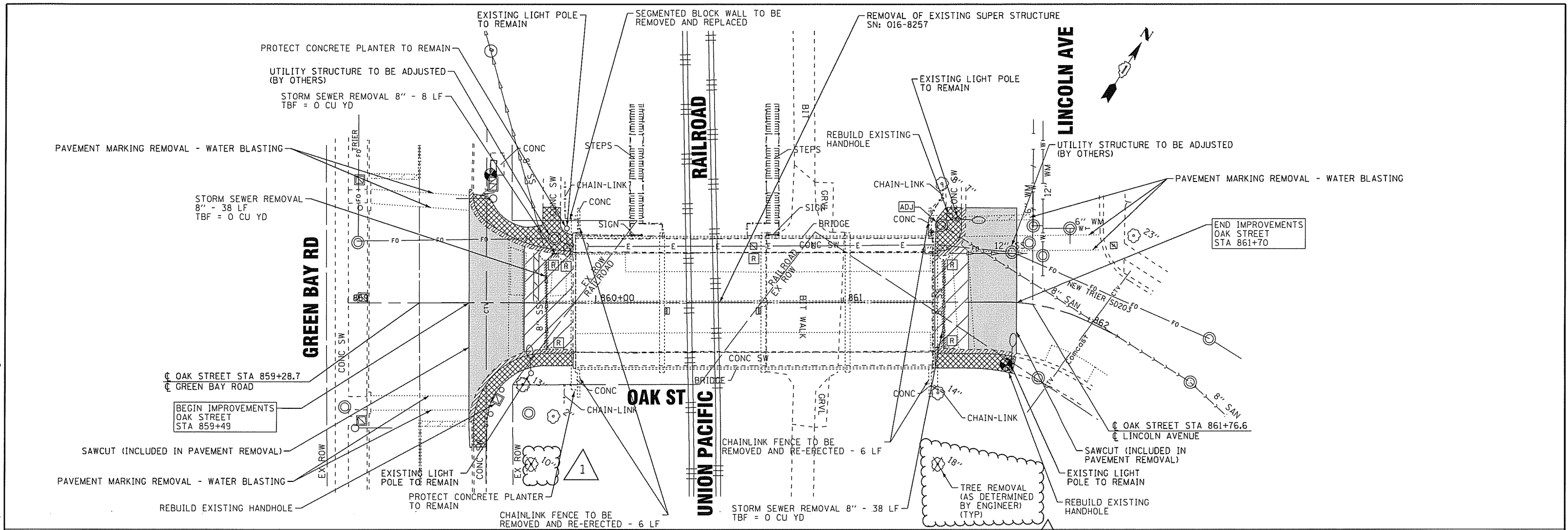
**STATE OF ILLINOIS  
DEPARTMENT OF TRANSPORTATION**

**SUMMARY OF QUANTITIES**

SCALE: STA. TO STA.

MUN. RTE.	SECTION	COUNTY	TOTAL SHEETS	SHEET NO.
*	15-00104-00-BR	COOK	93	7
* 3050A/3045			CONTRACT NO. 61F43	
FED. ROAD DIST. NO. 1 [ILLINOIS] FED. AID PROJECT				

STATE OF ILLINOIS - PROFESSIONAL DESIGN FIRM  
 LICENSE NO. - 184-00121 EXPIRES 4/30/2019  
 642Jam  
 ...\\plotdrv\pdf-bw\_DeFault.plt  
 ...\\phase2-pdfs\150754-SHT-150754-884.rvt  
 I:\CrystalLake\WINNE150754-Oak Cherry Bridge Rehab\CADD\Drawings\Phase 2\150754SHT\_Removal.dgn



**LEGEND**

- PAVEMENT REMOVAL
- CURB OR CURB AND GUTTER REMOVAL
- SIDEWALK REMOVAL
- APPROACH SLAB REMOVAL
- STRUCTURE TO BE ADJUSTED
- STRUCTURE TO BE REMOVED
- STORM SEWER/PIPE CULVERT REMOVAL
- T
 TREE PROTECTION  
 TREE ROOT PRUNING  
 TREE PRUNING

<b>BAXTER &amp; WOODMAN</b>	DESIGNED - DJS
	DRAWN - LKB
	CHECKED - DJS
	DATE - 10-09-18

REVISED - 01-04-19	FILE - 150754SHT_Removal.dgn
REVISED -	
REVISED -	

**STATE OF ILLINOIS  
DEPARTMENT OF TRANSPORTATION**

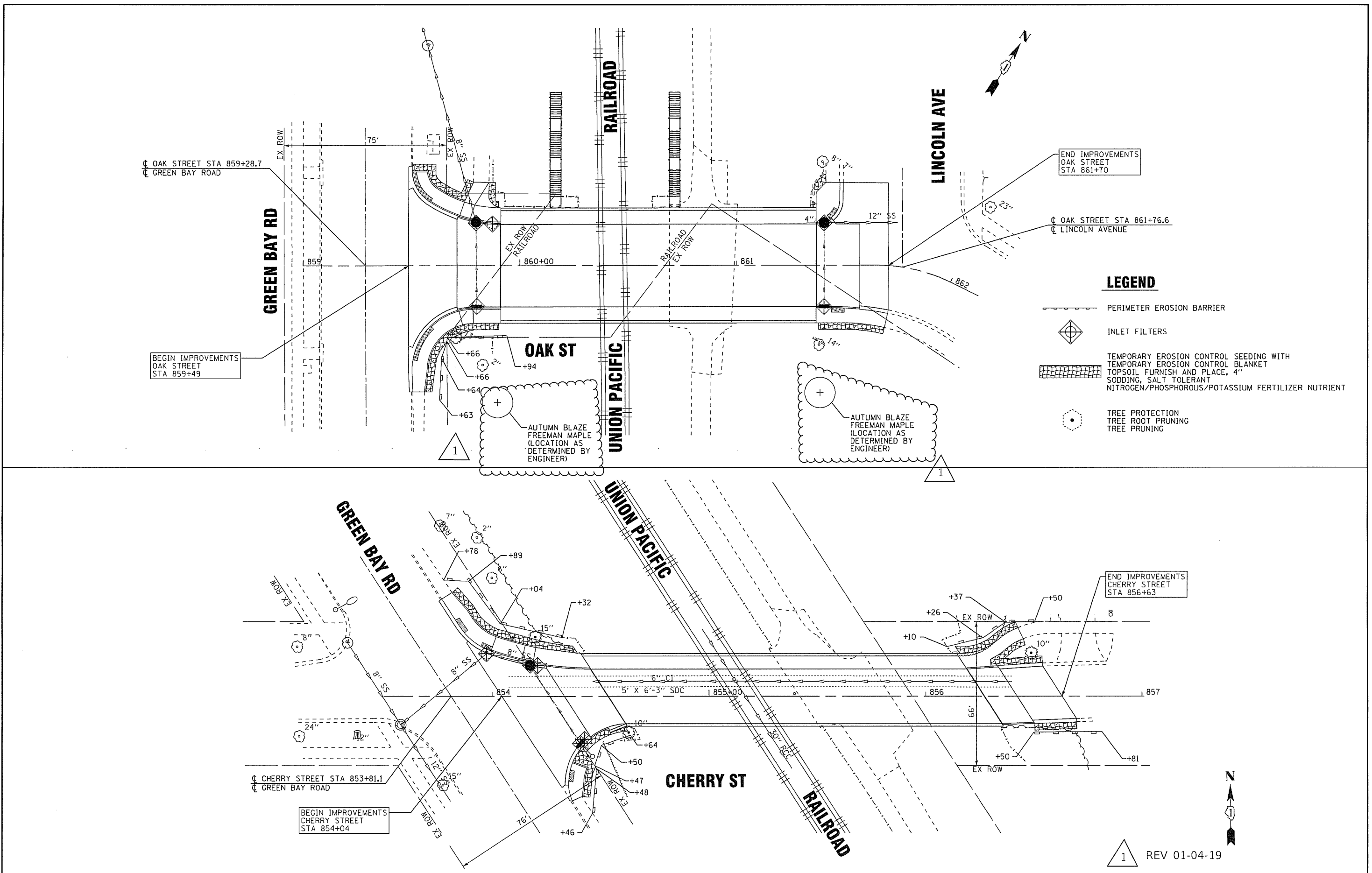
**EXISTING CONDITIONS AND REMOVAL PLAN**

SCALE: 1" = 20'      STA.      TO STA.

MUN. RTE.	SECTION	COUNTY	TOTAL SHEETS	SHEET NO.
3050A/3045	15-00104-00-BR	COOK	93	12
FED. ROAD DIST. NO. 1 [ILLINOIS] FED. AID PROJECT			CONTRACT NO. 61F43	

1 REV 01-04-19

\\plotdr-v\pdf-BW-Default.plt  
 Phase2-Drawings\150754-SHT-151  
 i:\c:\stival\lake\WINNE\150754-Oak Cherry Bridge Rehab\CADD\Drawings\Phase 2\150754SHT\_Erosion.dgn  
 STATE OF ILLINOIS - PROFESSIONAL DESIGN FIRM  
 LICENSE NO. - 184-00121 - EXPIRES 4/30/2019  
 6/2/2019 1/3/2019 12:52:22 PM



DESIGNED - JDM	REVISED - 01-04-19
DRAWN - UKB	REVISED -
CHECKED - DJS	REVISED -
DATE - 10-09-18	FILE - 150754SHT_Erosion.dgn

**STATE OF ILLINOIS  
 DEPARTMENT OF TRANSPORTATION**

**EROSION CONTROL PLAN**

SCALE: 1" = 20'  
 STA. TO STA.

MUN. RTE.	SECTION	COUNTY	TOTAL SHEETS	SHEET NO.
•	15-00104-00-BR	COOK	93	18
• 3050A/3045			CONTRACT NO. 61F43	
FED. ROAD DIST. NO. 1 [ILLINOIS] FED. AID PROJECT				

1 REV 01-04-19