

SN 041-0087/0088  
ORIGINAL CONST.

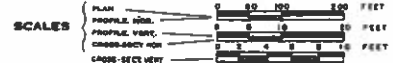
INDEX OF SHEETS  
SEE SHEET NO. 4

STATE OF ILLINOIS  
DEPARTMENT OF PUBLIC WORKS AND BUILDINGS  
DIVISION OF HIGHWAYS  
PLANS FOR PROPOSED  
FEDERAL AID HIGHWAY

SET NO. 1  
OF  
2 SETS

SECTION	ADJ.	COUNTY	POST MILE	POST MILE
41-8(A)	(A)	JEFFERSON	99	1

P-97-103-64



F.A.I. ROUTE 64  
SECTION 41-8(A,B-I,BVB)

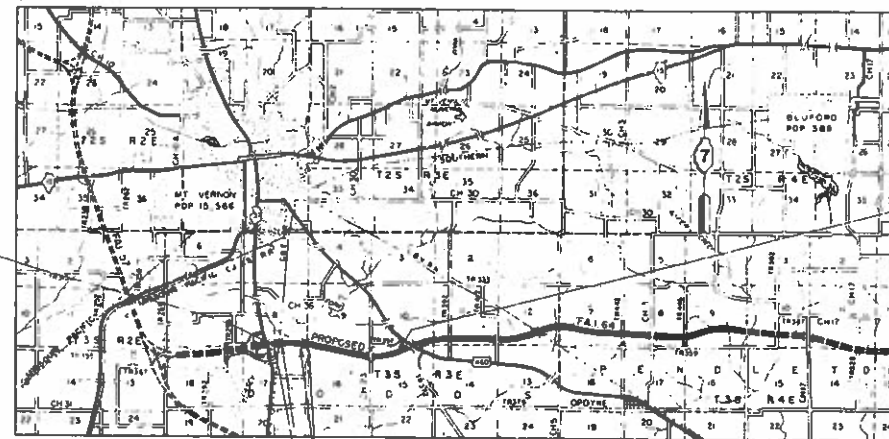
JEFFERSON COUNTY

FOR INFORMATION ONLY

GROSS LENGTH = 11,640.52 FT. = 2.205 MI.  
NET LENGTH = 11,640.52 FT. = 2.205 MI.



F.A.I. ROUTE 64 SECTION 41-8  
BEGINS STATION 2734+09.48



F.A.I. ROUTE 64 SECTION 41-8A  
ENDS STATION 2850+50

IG LIMITS  
STA. 2734+09.48 TO STA. 2760+87.16

STATE OF ILLINOIS  
DEPARTMENT OF PUBLIC WORKS AND BUILDINGS  
DIVISION OF HIGHWAYS

APPROVED: \_\_\_\_\_  
DATE: \_\_\_\_\_

DESIGN DESIGNATION

F.A.I. 64 = 1788(89)-B-1 - 6.3 (P.C.C.)  
ILL. 37 = 1347(89)-B-1 - 3.05 (P.C.C.)  
U.S. 460 = 212(89)-C

SECTION 41-8B-I  
BEGINS STA. 2783+91.25  
ENDS STA. 2785+08.75

SEC. 41-8BVB  
BEGINS STA. 2742+98.655  
ENDS STA. 2746+34.145

MAP SCALE - APPROXIMATE  
0 1 2 MILES

GOODKIND & O'DEA INC.  
CONSULTING ENGINEERS  
CHICAGO, ILLINOIS

DEPARTMENT OF TRANSPORTATION  
BUREAU OF PUBLIC ROADS

APPROVED: \_\_\_\_\_  
DIVISION ENGINEER DATE: \_\_\_\_\_

JEFFERSON COUNTY SECTION 41-8A 41-8BVB 41-8B-I F.A.I. ROUTE 64



**SIGNATURES**

F.A.I. ROUTE 64  
 SEC. 41-6A, 41-6BVB, 41-6B-1  
 JEFFERSON COUNTY

PLANS PREPARED BY GOODKIND & O'DEA INC FOR DISTRICT 7

EXAMINED	June 30, 1969	<i>H. R. ...</i>	DISTRICT ENGINEER OF DESIGN
EXAMINED	June 30, 1969	<i>T. G. ...</i>	DISTRICT ENGINEER OF CONSTRUCTION
EXAMINED	June 30, 1969	<i>...</i>	DISTRICT ENGINEER OF MAINTENANCE
EXAMINED	June 30, 1969	<i>...</i>	DISTRICT ENGINEER OF RESEARCH AND PLANNING
EXAMINED	June 30, 1969	<i>E. R. ...</i>	DISTRICT ENGINEER OF TRAFFIC
EXAMINED	June 30, 1969	<i>...</i>	DISTRICT ENGINEER OF RIGHT-OF-WAY
EXAMINED	June 30, 1969	<i>H. L. ...</i>	DISTRICT ENGINEER

**INDEX OF SHEETS**

SHEET NO.	TITLE
1	TITLE SHEET
2	TYPICAL SECTIONS
3	TYPICAL SECTION & SCHEDULE OF MEDIAN DRAINAGE STRUCTURES
4	GENERAL NOTES, INDEX OF SHEETS & SIGNATURES
5	SUMMARY OF QUANTITIES
6	DRAINAGE SCHEDULE
7	EARTHWORK TOPSOIL & SEEDING SCHEDULE
8	QUANTITY SCHEDULE
9-9A	TREE REMOVAL SCHEDULE & DETAILS OF POROUS GRANULAR EMBANKMENT & SETTLEMENT PLATFORM DETAIL
10-14	PLAN & PROFILE STA. 2734+09.48 TO STA. 2830+50 STATE PROPERTY
15-16	PLAN & PROFILE CASEY FORK RELOCATION
17	TERMINAL DETAIL RAMP "C"
18; 18A	DETAIL SPECIAL PAVED DITCH & DITCH CHECK DETAILS SUBSOIL STABILITY MEASURING DEVICES
19	DETAIL JUTE MATTING & TRANSITIONAL TREATMENT
20	STD 1969 HEADWALL DETAIL
21-22	CULVERT PROFILE
23-43	BRIDGE PLANS SEC. 41-6BVB
44-56	BRIDGE PLANS SEC. 41-6B-1
57-59	SOILS PROFILES
60-99	CROSS SECTIONS

**GENERAL NOTES**

THE WORK INCLUDED IN SECTION 41-6A CONSISTS OF THE GRADING FOR FUTURE PAVING OF 2.205 MILES OF DUAL 24' WIDTH CONTIGUOUSLY REINFORCED P.C. CONCRETE PAVEMENT, 8" TIECH ON A DUAL ROAD BED HAVING A 70' DEEPESSED MEDIAN; THE CONSTRUCTION OF MEDIAN STRUCTURES; CLEARING; GRADING; SEEDING; AND OTHER INCIDENTAL WORK NECESSARY TO COMPLETE THE SECTION.

THE WORK INCLUDED IN SECTION 41-6BVB CONSISTS OF THE FABRICATION, FINISHING, AND COMPLETE CONSTRUCTION OF TWO 4 SPAN STEEL WIDE FLANGE BEAM BRIDGE OVER CASEY FORK CREEK AND THE C. & B. R.R.

THE WORK INCLUDED IN SECTION 41-6B-1 CONSISTS OF THE FABRICATION, FINISHING, AND COMPLETE CONSTRUCTION OF A 2 SPAN WIDE FLANGE BEAM BRIDGE WITH VERTICAL CURVES CARRYING COUNTY HIGHWAY 23 OVER F.A.I. ROUTE 64 AT STATION 2824+94.78, ALSO THE CONSTRUCTION OF COUNTY HIGHWAY 23 WITH A 22' WIDE AGGREGATE BASE COURSE, TYPE A, WITH A 20' BITUMINOUS SURFACE TREATMENT (TYPE A), (SUBCLASS A-3), THE CONSTRUCTION OF FIELD ENTRANCES, SEEDING, AND OTHER INCIDENTAL WORK.

SWATH AND EMBANKMENT EXCAVATION NECESSARY FOR THE CONSTRUCTION OF THIS SECTION SHALL BE SUPPLIED BY THE CONTRACTOR FOR THIS SECTION FROM LOCATIONS APPROVED BY THE ENGINEER.

THE DOWN SLOPES OF FILLS AND CUTS, BACK SLOPES OF CUTS, EARTH SHOULDERS, DITCHES, MEDIANS, AND OTHER LOCATIONS SHOWN ON THE TYPICAL CROSS SECTIONS OF THE PLANS SHALL BE COVERED WITH THREE (3) INCHES OF TOP SOIL.

THE CONTRACTOR SHALL FURNISH AND EXERCISE RIGHT OF WAY MARKERS IN ACCORDANCE WITH STANDARD 1744-1 AT LOCATIONS SHOWN ON THE PLANS.

WHERE SECTION OR SUB-SECTION MARKERS ARE ENCOUNTERED, THE ENGINEER SHALL BE NOTIFIED BEFORE SUCH MARKERS ARE REMOVED. THE CONTRACTOR SHALL PROTECT AND CAREFULLY PRESERVE ALL PROPERTY MARKS AND MONUMENTS UNTIL THE OWNER, AN AUTHORIZED SURVEYOR, OR AGENT HAS WITNESSED OR OTHERWISE REFERENCED THEIR LOCATION.

IF THE ENGINEER ORDERS THE EMBANKMENT MATERIAL TO BE SPRINKLED, THE WATER SHALL BE FURNISHED AND APPLIED AS DIRECTED BY THE ENGINEER. THE WORK SHALL BE PAID FOR AT THE CONTRACT UNIT PRICE PER UNIT (LONG GALLONS) FOR WATER APPLIED. THE QUANTITY IS SHOWN IN THE SUMMARY OF QUANTITIES.

SEEDING SHALL BE CLASS III AND CLASS II SEEDING IN ACCORDANCE WITH THE STANDARD SPECIFICATIONS. THE CLASS OF SEEDING IS SHOWN IN THE PLANS.

SEEDING DATE: SPRING FROM JANUARY 1 TO APRIL 30, FALL FROM JULY 1 TO DECEMBER 31.

THE CONTRACTOR FOR THIS SECTION SHALL CONSTRUCT THE EMBANKMENT TO THE GRADING LINE AS SHOWN ON THE TYPICAL SECTIONS TO DRAIN TOWARD THE MEDIAN. TOPSOIL SHALL BE PLACED AT ALL LOCATIONS, INCLUDING MEDIANS, WHERE FEASIBLE. ALL AREAS TO BE SEEDING EXCEPT MEDIANS SHALL BE DONE BY THIS CONTRACTOR. THE SEEDING SHALL BE SEEDING BY THE CONTRACTOR BY A FUTURE CONTRACT.

TWO (2) SIGNS OF 2153-7 SHALL BE ERRECTED AT THE LOCATION AS DIRECTED BY THE ENGINEER.

ANY REFERENCE TO A STANDARD IN THESE PLANS SHALL BE INTERPRETED TO MEAN THE EDITION AS INDICATED BY THE NUMBER LISTED IN THE INDEX OF SHEETS OR THE COPY OF THE STANDARD INCLUDED IN THESE PLANS.



FA I ROUTE 64  
SEC. 41-8A; 41-8B; 41-8B-1  
JEFFERSON COUNTY

(A) = 41-8A FAI 64 (A) JEFFERSON 99 5  
41-8B  
41-8B-1

CODE NUMBER	ITEM	SUMMARY OF QUANTITIES		I - 1G PORTION		I PORTION	
		CONSTRUCTION TYPE CODE	UNIT	BRIDGE	ROAD	BRIDGE	ROAD
			QUANTITY	41-8B/B	41-8A	41-8B-1	41-8B-2
201001	TREE REMOVAL (6 TO 10 INCH DIAMETER)		100				
201002	TREE REMOVAL (OVER 10 INCH DIAMETER)		54				
201003	TREE REMOVAL, ACRES		393				
202001	EARTH EXCAVATION		183,349				
202008	REMOVAL & DISPOSAL OF UNSUITABLE MATERIAL		16,390				
203001	CHANNEL EXCAVATION		14,310				
204001	BANKING-EMBANKMENT		42,885				
207005	EMBANKMENT		47,315				
208002	POROUS GRANULAR EMBANKMENT		10,380				
210001	TOP SOIL		17,287				
211001	AGGREGATE-BASE-COURSE-TWO		204				
212001	AGGREGATE-SURFACE-COURSE-TWO		204				
213001	BITUMINOUS-MASTIC-PRIME-COAT		204				
214001	BITUMINOUS-MASTIC-SEAL-AND-SEAL-COAT		204				
215001	SEAL-COAT-AGGREGATE		204				
301001	CLASS A EXCAVATION FOR STRUCTURES		501				
302001	CLASS B EXCAVATION FOR STRUCTURES		476				
303001	REINFORCING AND ERECTING STRUCTURAL STEEL		2,764.7				
304001	CLASS X CONCRETE		2,043.1				
305001	PROTECTIVE COAT		3.3				
306001	CLASS A CONCRETE		3,410				
307001	CLASS X CONCRETE		3,001				
308001	REINFORCING AND ERECTING STRUCTURAL STEEL		2,764.7				
309001	CLASS X CONCRETE		2,043.1				
310001	PROTECTIVE COAT		3.3				
311001	CLASS A CONCRETE		3,410				
312001	CLASS X CONCRETE		3,001				
313001	REINFORCING AND ERECTING STRUCTURAL STEEL		2,764.7				
314001	CLASS X CONCRETE		2,043.1				
315001	PROTECTIVE COAT		3.3				
316001	CLASS A CONCRETE		3,410				
317001	CLASS X CONCRETE		3,001				
318001	REINFORCING AND ERECTING STRUCTURAL STEEL		2,764.7				
319001	CLASS X CONCRETE		2,043.1				
320001	PROTECTIVE COAT		3.3				
321001	CLASS A CONCRETE		3,410				
322001	CLASS X CONCRETE		3,001				
323001	REINFORCING AND ERECTING STRUCTURAL STEEL		2,764.7				
324001	CLASS X CONCRETE		2,043.1				
325001	PROTECTIVE COAT		3.3				
326001	CLASS A CONCRETE		3,410				
327001	CLASS X CONCRETE		3,001				
328001	REINFORCING AND ERECTING STRUCTURAL STEEL		2,764.7				
329001	CLASS X CONCRETE		2,043.1				
330001	PROTECTIVE COAT		3.3				
331001	CLASS A CONCRETE		3,410				
332001	CLASS X CONCRETE		3,001				
333001	REINFORCING AND ERECTING STRUCTURAL STEEL		2,764.7				
334001	CLASS X CONCRETE		2,043.1				
335001	PROTECTIVE COAT		3.3				
336001	CLASS A CONCRETE		3,410				
337001	CLASS X CONCRETE		3,001				
338001	REINFORCING AND ERECTING STRUCTURAL STEEL		2,764.7				
339001	CLASS X CONCRETE		2,043.1				
340001	PROTECTIVE COAT		3.3				
341001	CLASS A CONCRETE		3,410				
342001	CLASS X CONCRETE		3,001				
343001	REINFORCING AND ERECTING STRUCTURAL STEEL		2,764.7				
344001	CLASS X CONCRETE		2,043.1				
345001	PROTECTIVE COAT		3.3				
346001	CLASS A CONCRETE		3,410				
347001	CLASS X CONCRETE		3,001				
348001	REINFORCING AND ERECTING STRUCTURAL STEEL		2,764.7				
349001	CLASS X CONCRETE		2,043.1				
350001	PROTECTIVE COAT		3.3				
351001	CLASS A CONCRETE		3,410				
352001	CLASS X CONCRETE		3,001				
353001	REINFORCING AND ERECTING STRUCTURAL STEEL		2,764.7				
354001	CLASS X CONCRETE		2,043.1				
355001	PROTECTIVE COAT		3.3				
356001	CLASS A CONCRETE		3,410				
357001	CLASS X CONCRETE		3,001				
358001	REINFORCING AND ERECTING STRUCTURAL STEEL		2,764.7				
359001	CLASS X CONCRETE		2,043.1				
360001	PROTECTIVE COAT		3.3				
361001	CLASS A CONCRETE		3,410				
362001	CLASS X CONCRETE		3,001				
363001	REINFORCING AND ERECTING STRUCTURAL STEEL		2,764.7				
364001	CLASS X CONCRETE		2,043.1				
365001	PROTECTIVE COAT		3.3				
366001	CLASS A CONCRETE		3,410				
367001	CLASS X CONCRETE		3,001				
368001	REINFORCING AND ERECTING STRUCTURAL STEEL		2,764.7				
369001	CLASS X CONCRETE		2,043.1				
370001	PROTECTIVE COAT		3.3				
371001	CLASS A CONCRETE		3,410				
372001	CLASS X CONCRETE		3,001				
373001	REINFORCING AND ERECTING STRUCTURAL STEEL		2,764.7				
374001	CLASS X CONCRETE		2,043.1				
375001	PROTECTIVE COAT		3.3				
376001	CLASS A CONCRETE		3,410				
377001	CLASS X CONCRETE		3,001				
378001	REINFORCING AND ERECTING STRUCTURAL STEEL		2,764.7				
379001	CLASS X CONCRETE		2,043.1				
380001	PROTECTIVE COAT		3.3				
381001	CLASS A CONCRETE		3,410				
382001	CLASS X CONCRETE		3,001				
383001	REINFORCING AND ERECTING STRUCTURAL STEEL		2,764.7				
384001	CLASS X CONCRETE		2,043.1				
385001	PROTECTIVE COAT		3.3				
386001	CLASS A CONCRETE		3,410				
387001	CLASS X CONCRETE		3,001				
388001	REINFORCING AND ERECTING STRUCTURAL STEEL		2,764.7				
389001	CLASS X CONCRETE		2,043.1				
390001	PROTECTIVE COAT		3.3				
391001	CLASS A CONCRETE		3,410				
392001	CLASS X CONCRETE		3,001				
393001	REINFORCING AND ERECTING STRUCTURAL STEEL		2,764.7				
394001	CLASS X CONCRETE		2,043.1				
395001	PROTECTIVE COAT		3.3				
396001	CLASS A CONCRETE		3,410				
397001	CLASS X CONCRETE		3,001				
398001	REINFORCING AND ERECTING STRUCTURAL STEEL		2,764.7				
399001	CLASS X CONCRETE		2,043.1				
400001	PROTECTIVE COAT		3.3				

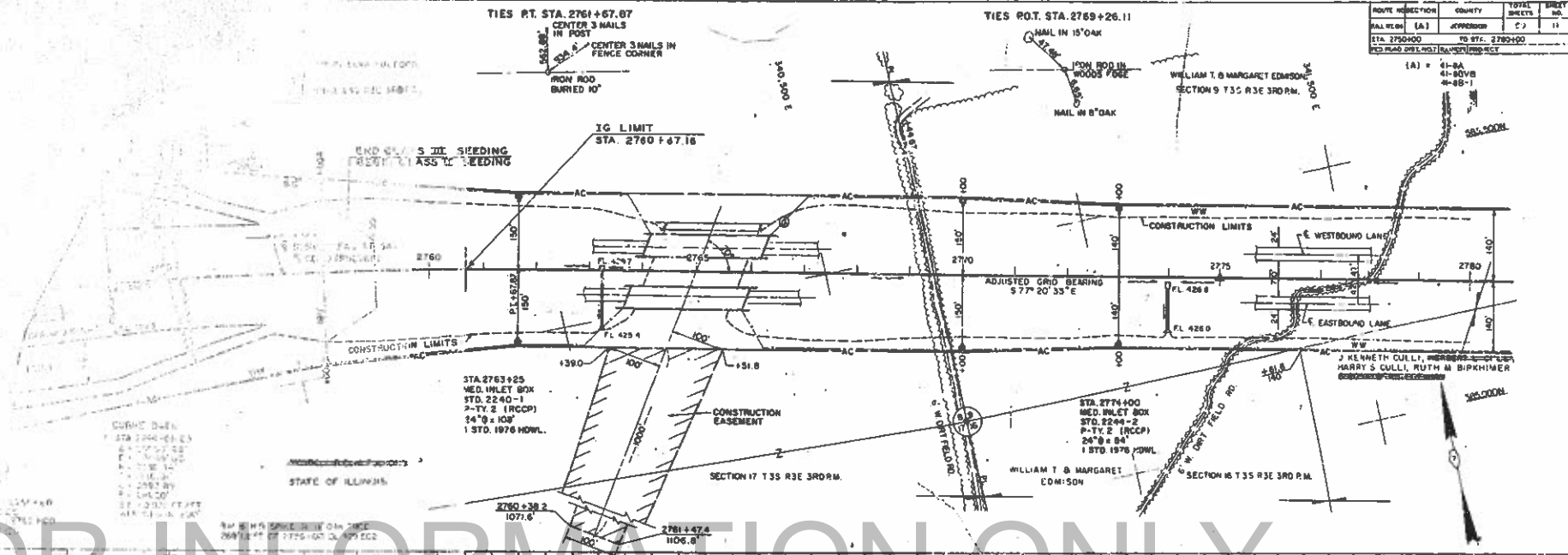
SUMMARY OF QUANTITIES

FOR INFORMATION ONLY

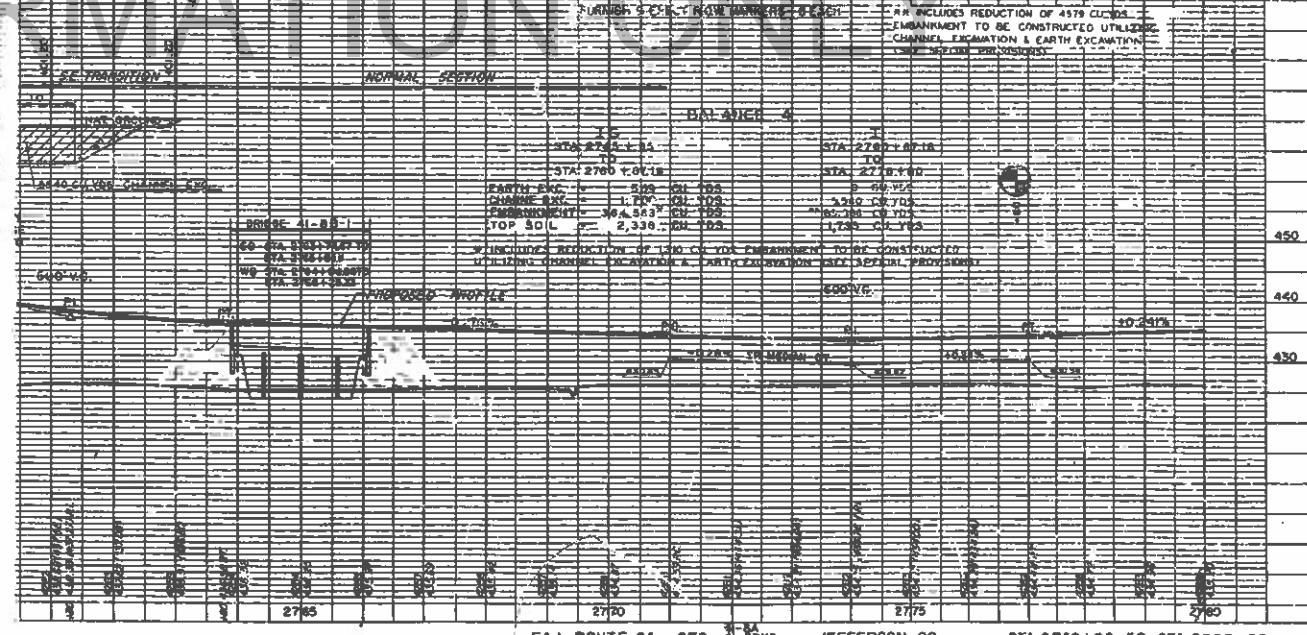




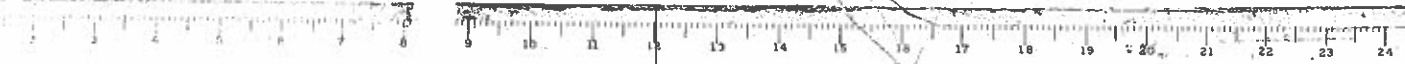
FOR INFORMATION ONLY



ROUTE	DIRECTION	COUNTY	TOTAL SHEETS	SHEET NO.
64	JEFFERSON	JEFFERSON	C 2	11
STA. 2750+00	TO STA. 2780+00			

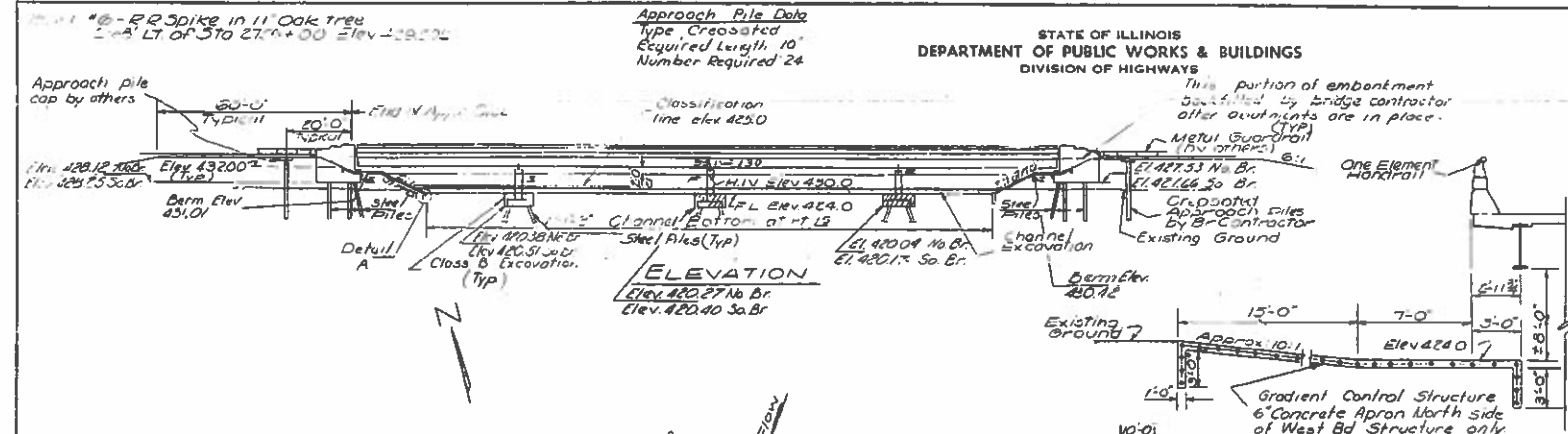


F.A.I. ROUTE 64 SEC. 16-17 JEFFERSON CO. STA. 2750+00 TO STA. 2780+00



STATE OF ILLINOIS  
DEPARTMENT OF PUBLIC WORKS & BUILDINGS  
DIVISION OF HIGHWAYS

PROJECT NO.	99-44	SHEET NO.	11
DATE	11/15/44	DESIGNER	JEFFERSON
BY	JEFFERSON	CHECKED	JEFFERSON
DATE	11/15/44	APPROVED	JEFFERSON



**GENERAL NOTES**

All reinforcement bars shall be lapped 24 diameters unless otherwise shown.

Rivets 3/4", open holes 1/2", unless otherwise noted.

Diaphragm connections may be adapted to shop welding subject to approval of the Engineer.

Except as otherwise provided, all structural steel shall receive one shop coat of red lead paint and two field coats of Aluminum paint.

Field welding of construction accessories will not be permitted to the bottom flange of beams or girders nor to the top flange for a distance equal to one-fourth the span length each way from the pier supports. Field welding in other areas will be permitted only when approved by the Engineer.

Anchor bolts shall be set before riveting diaphragms over supports.

Slope wall shall be reinforced with welded wire fabric 6" x 6" mesh, weighing 58# per 100 sq. ft.

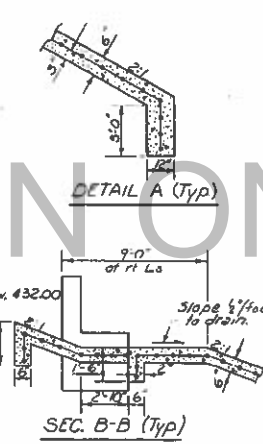
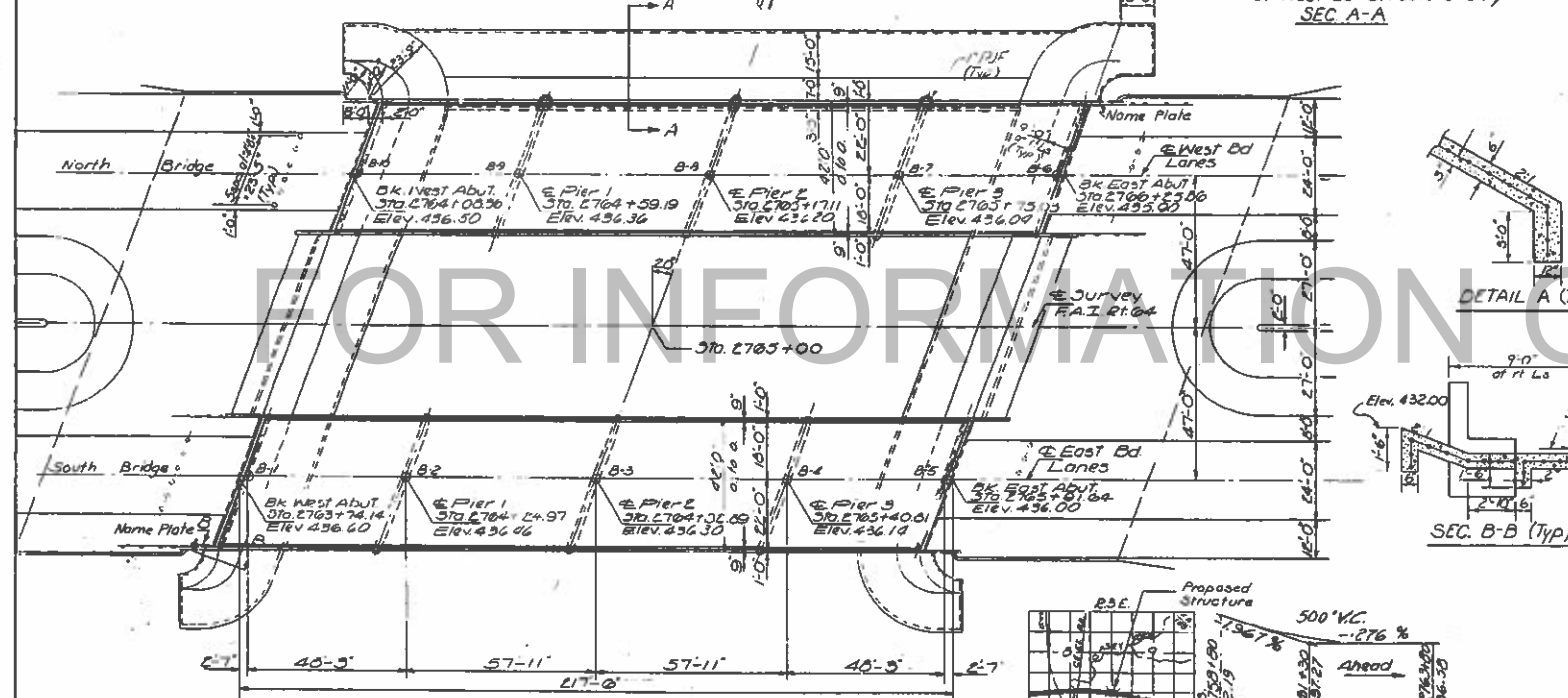
Class A Excavation for structures includes excavation for slope wall.

The embankment configuration shown shall be the minimum embankment that must be constructed prior to construction of the abutments.

The concrete rail section above the mandatory construction joint at the top of the slab shall be constructed of Class X Concrete, except the aggregates shall conform to the requirements of Handral Concrete.

Layout of slope walls may be varied to suit ground conditions subject to approval by the Engineer.

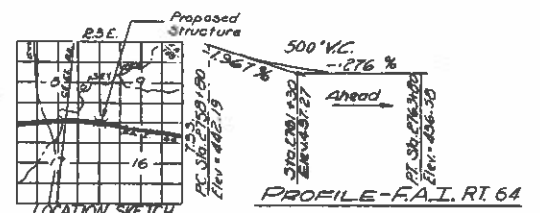
The contractor shall drive four steel test piles, one each at West Abutment South Bridge, East Abutment North Bridge, Pier One North Bridge and Pier Three South Bridge, at a permanent location, as directed by the Engineer, before ordering the remainder of pile.



**TOTAL BILL OF MATERIALS**

ITEM	UNIT	SUPER	SUB	TOTAL
Class "A" Concrete	Cu Yds		300.1	300.1
Class "B" Excav for Structure	Cu Yds			44.3
Class X Concrete	Cu Yds	520.9	181.2	702.1
Protective Coat	Sq Yds			22.70
Structural Steel	Lbs	410.00		410.00
Aluminum Cling	Lbs	85.7		85.7
Reinforcement Bars	Lbs	137350	31000	168350
Crossed Piles - up to 20'	Lbs			240
Steel Piles (B&B's)	Lbs			379.7
Test Piles (Steel) (B&B's)	Lbs			4
Name Plates	Ea.			2
Slope Wall (6")	Sq Yds			1800
Bridge Seat Sealant	Lbs			1
Channel Excavation	Cu Yds			2020

At abutments only.  
Includes quantity of gradient control structure.  
Includes excavation for slope walls.



DESIGNED: J. V. KIMMEL  
CHECKED: George G. Dzel  
DRAWN: J. M. Herlinger  
CHECKED: George G. Dzel

EXAMINED: [Signature]  
PASSED: [Signature]  
APPROVED: [Signature]

February 27 1945

STATION 2765+00  
BUILT 196 BY  
STATE OF ILLINOIS  
F.A.I. RT 64 SEC 41-88-1  
F.A. PROJ. 1-16-43(U)  
LOADING HS 20 & LT  
NAME PLATE  
See Sta 275-1

**WATERWAY INFORMATION**

Drainage Area ——— 55,040 Acres +  
Character ——— Level, rolling, hilly, wooded, cultivated  
Required Opening (50 Year Flood) — 1000 Sq Ft  
Present Opening ——— None  
Proposed Opening ——— 1000 Sq Ft  
Discharge ——— 10,800 cfs.

For Mainline and overflow structures

**DESIGN STRESSES**

$f_c = 1400$  PSI (Super & Sub)  
 $f_s = 20,000$  PSI (Reinf)  
 $f_s = 20,000$  PSI (Struct)  
 $w_c = 75$  PSI (FTG)  
 $n = 10$   
L.L. Deflection = 1/800

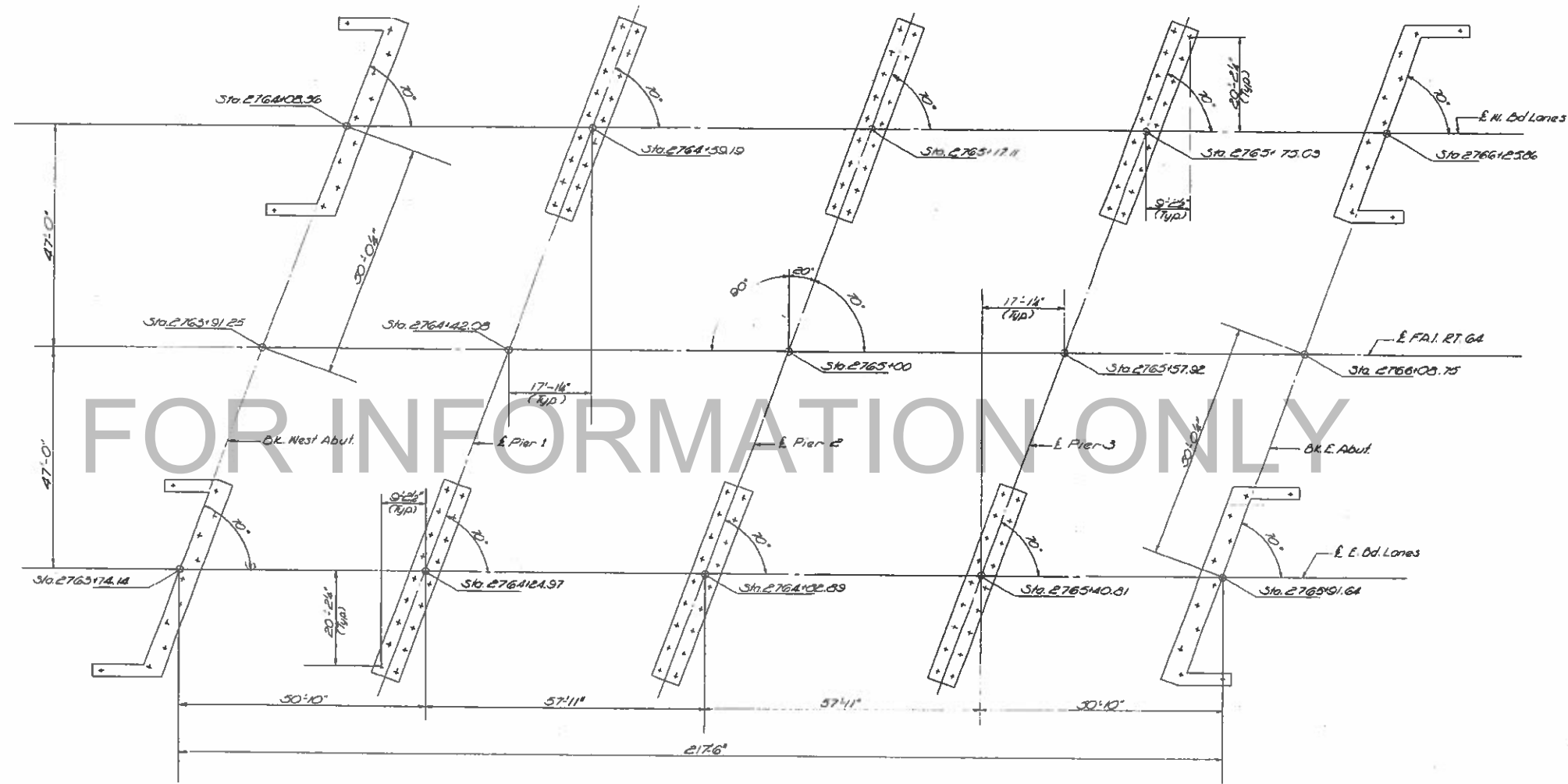
LOADING HS20-44 & LT.

**GENERAL PLAN ELEVATION**  
CASEY FORK  
OVERFLOW CHANNEL  
F.A.I. ROUTE 64  
SECTION 41-88-1  
JEFFERSON COUNTY  
STATION 2765+00

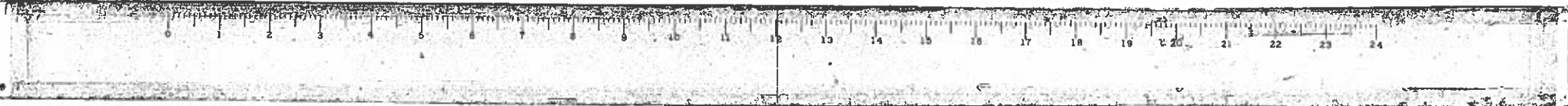
1/11/45 SYK

STATE OF ILLINOIS  
DEPARTMENT OF PUBLIC WORKS & BUILDINGS  
DIVISION OF HIGHWAYS

PROJECT NO.	SECTION	DATE	SHEET NO.
GA 21-B	JEFFERSON	99	45
SHEET NO. 1/1			11 SHEETS



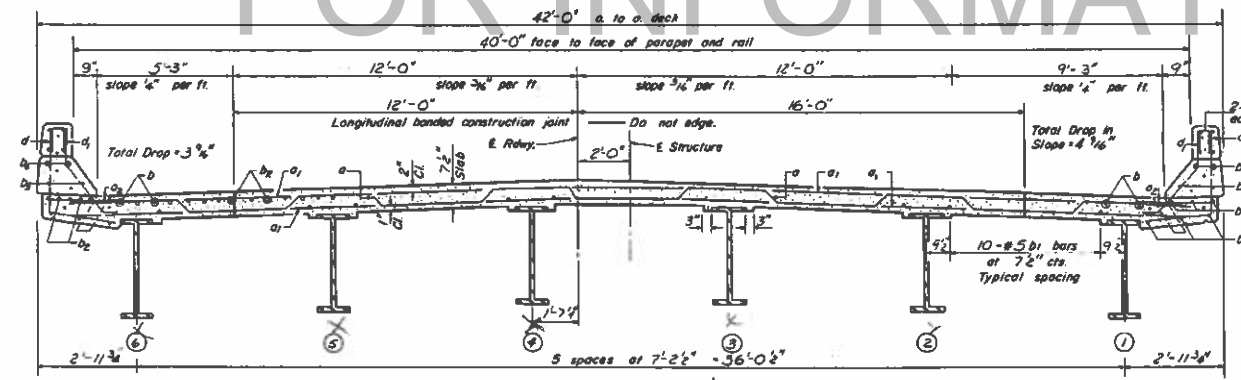
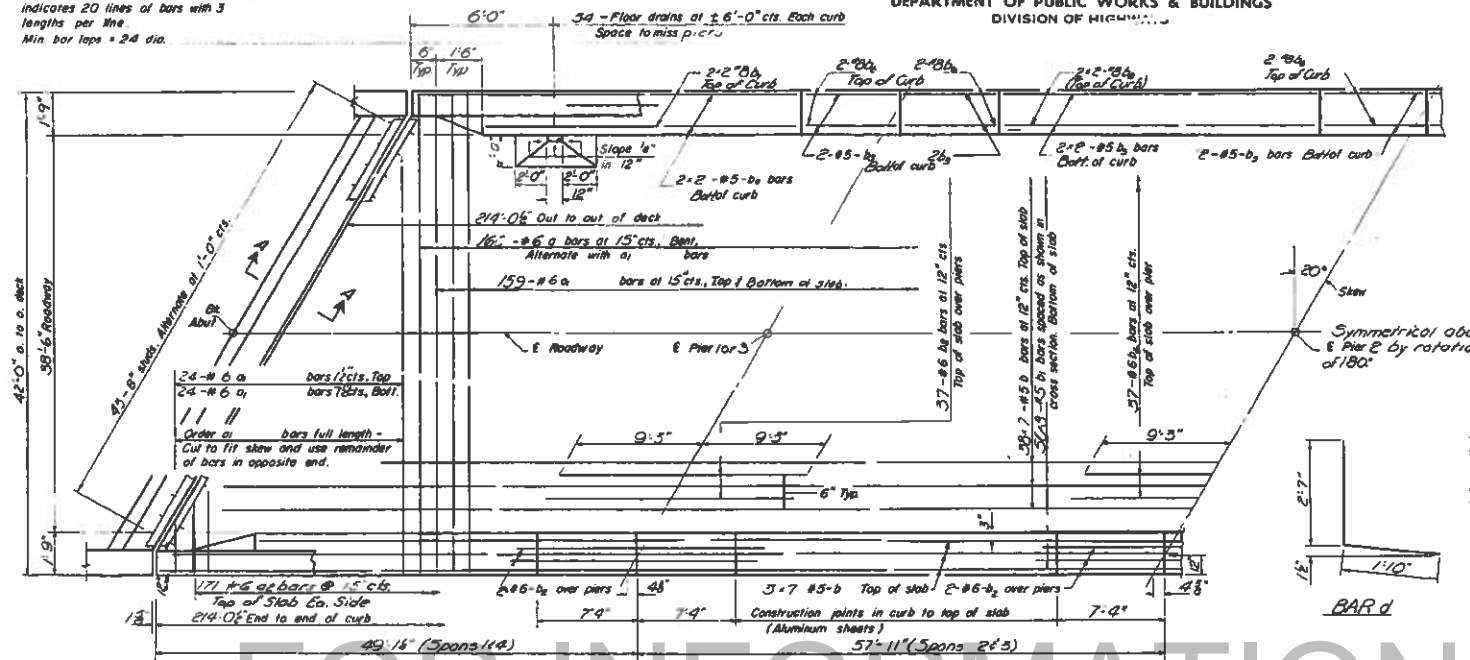
FOOTING LAYOUT  
 FAI RT 64 SEC. 41-B-D-1  
 JEFFERSON COUNTY  
 STATION 2765+00



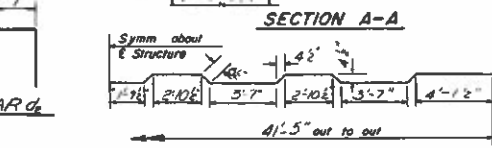
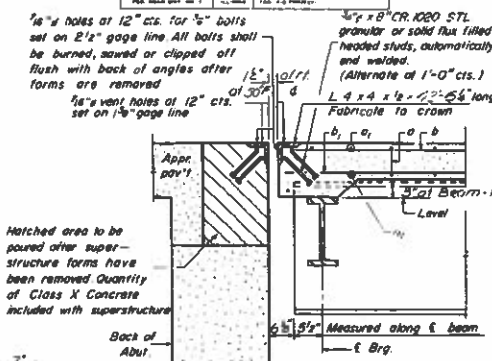
STATE OF ILLINOIS  
DEPARTMENT OF PUBLIC WORKS & BUILDINGS  
DIVISION OF HIGHWAYS

PROJECT NO. 41-8  
SHEET NO. 4  
JEFFERSON 93 48  
IF SHEETS

Note:  
Bars indicated thus 20x3-#5 etc.  
indicates 20 lines of bars with 3  
lengths per line.  
Min. bar laps = 24 dia.



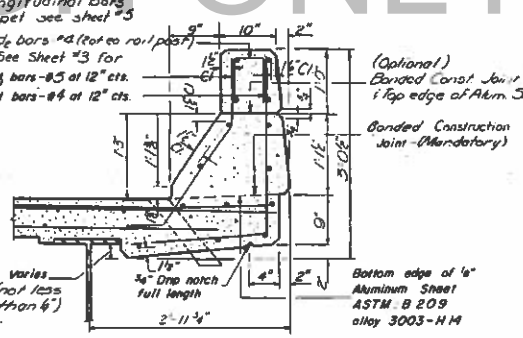
CROSS SECTION  
North Bridge Looking West  
South Bridge Looking East



TWO BRIDGES  
BILL OF MATERIAL

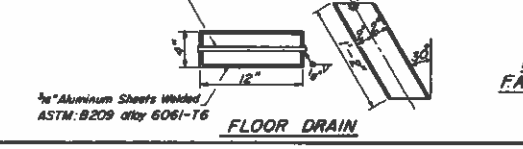
Bar	No	Size	Length	Shape
a	320	#6	43'-1"	—
a1	132	#6	40'-6"	—
a2	604	#6	3'-0"	—
b	616	#5	31'-9"	—
b1	225	#5	28'-0"	—
b2	236	#8	18'-6"	—
b3	40	#5	7'-1"	—
b4	32	#5	21'-5"	—
b5	32	#5	22'-2"	—
b6	40	#8	7'-1"	—
b7	32	#8	21'-9"	—
b8	32	#8	22'-6"	—
d	352	#4	4'-5"	—
d1	824	#3	5'-3"	—
d2	208	#4	2'-1"	—
Reinforcement Bars		Lbs.	155,110	
Structural Steel		Lbs.	20,770	
Class X Concrete		Cu. Yd.	492.7	

\* Weight of bearing assemblies with lead plates, and anchor bolts are included as structural steel  
Est. Wt = 17170  
The lengths and quantities of longitudinal reinforcement and Class X Concrete in parapets are not included in above quantities. See sheet



CURB SECTION

Cost of Aluminum Drains and Sheets shall be incidental to Class X Concrete  
3/8" x 1/2" Aluminum bar ASTM B21 alloy 6061-T6  
Fill slot with weld



FLOOR DRAIN

DESIGNED A. V. Khayyat  
CHECKED George A. Dadi  
DRAWN Imheninger  
CHECKED George A. Dadi  
EXAMINED [Signature]  
PASSED [Signature]  
APPROVED [Signature]  
I-6-L (>14") B-1-65 Rev. 1-11-66  
MODIFIED Rev. 8/29/68 SYK

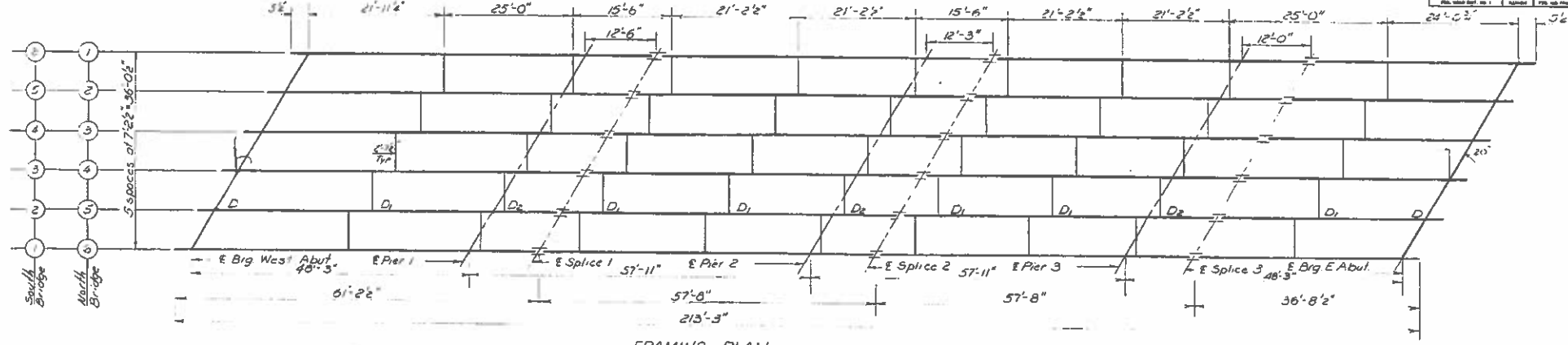
SUPERSTRUCTURE  
NORTH & SOUTH BRIDGES  
F.A.I. ET. 64 SEC. 41-8B-1  
JEFFERSON COUNTY  
STATION 2765 + 00



1.200  
 18262728  
 2.19

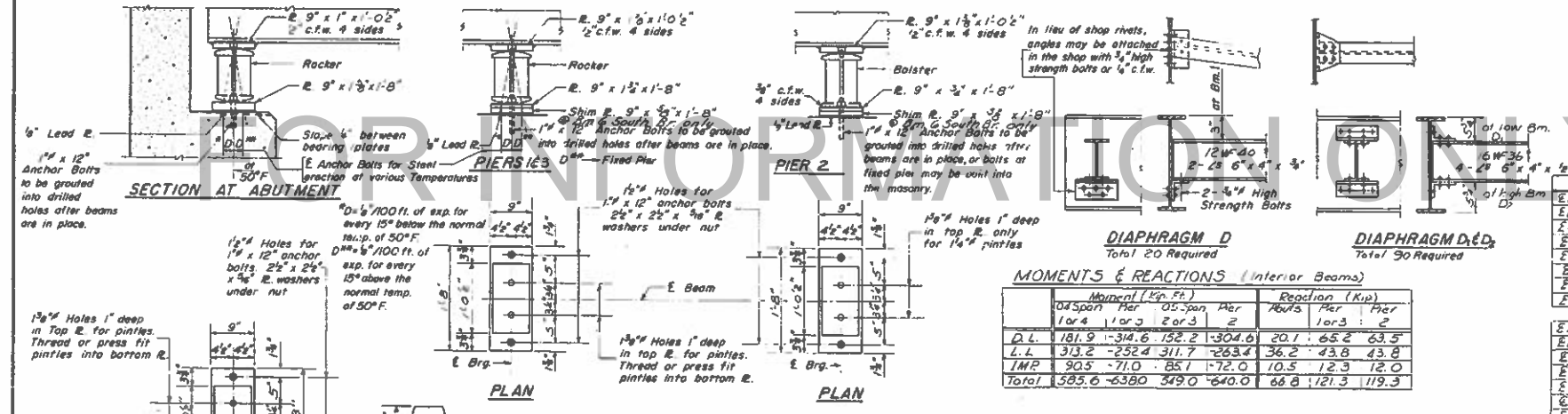
STATE OF ILLINOIS  
 DEPARTMENT OF PUBLIC WORKS & BUILDINGS  
 DIVISION OF HIGHWAYS

PROJECT NO.	91-9	CONTRACT NO.	JEFFERSON	SHEET NO.	99	OF	51
SHEET NO. 6							
11 SHEETS							



FRAMING PLAN  
 (All Beams 33 WF130)

Note: Run all diaphragms level

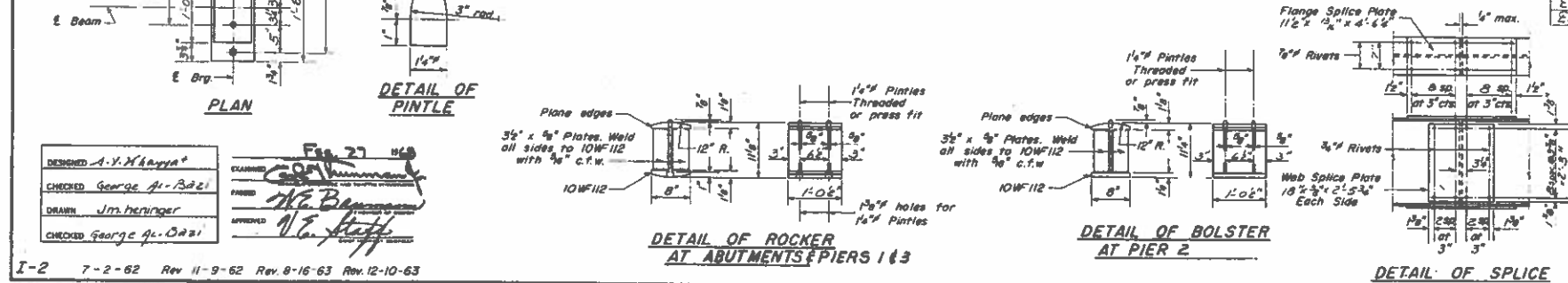


ELEVATIONS OF TOP OF WF  
 (For fabrication only)

	NORTH BRIDGE					
	Om 1	Om 2	Om 3	Om 4	Om 5	Om 6
E Brg West Abut	435.5	435.6	435.8	435.9	435.9	435.9
E Brg Pier 1	435.3	435.4	435.6	435.6	435.5	435.6
E Splice 1	435.6	435.6	435.5	435.6	435.6	435.6
E Brg Pier 2	435.1	435.3	435.4	435.5	435.4	435.5
E Splice 2	435.1	435.2	435.1	435.0	435.1	435.2
E Brg Pier 3	435.0	435.1	435.0	435.3	435.2	435.1
E Splice 3	434.7	435.1	435.2	435.3	435.2	435.0
E Brg East Abut	434.6	435.0	435.2	435.2	435.1	435.0

MOMENTS & REACTIONS (Interior Beams)

	Moments (Kip Ft)		Reactions (Kip)	
	1st Span	2nd Span	1st Pier	2nd Pier
D.L.	181.9	-314.6	152.2	-304.0
L.L.	313.2	-252.4	311.7	-253.4
IMP	90.5	-71.0	85.1	-72.0
Total	585.6	-638.0	549.0	-640.0



STRUCTURAL STEEL  
 NORTH & SOUTH BRIDGES  
 FAI. RT. 64 SEC. 41-BB-1  
 JEFFERSON COUNTY  
 STA. 2765+00

DESIGNED A.V. Khanna  
 CHECKED George A. Baei  
 DRAWN Jim Heninger  
 CHECKED George A. Baei

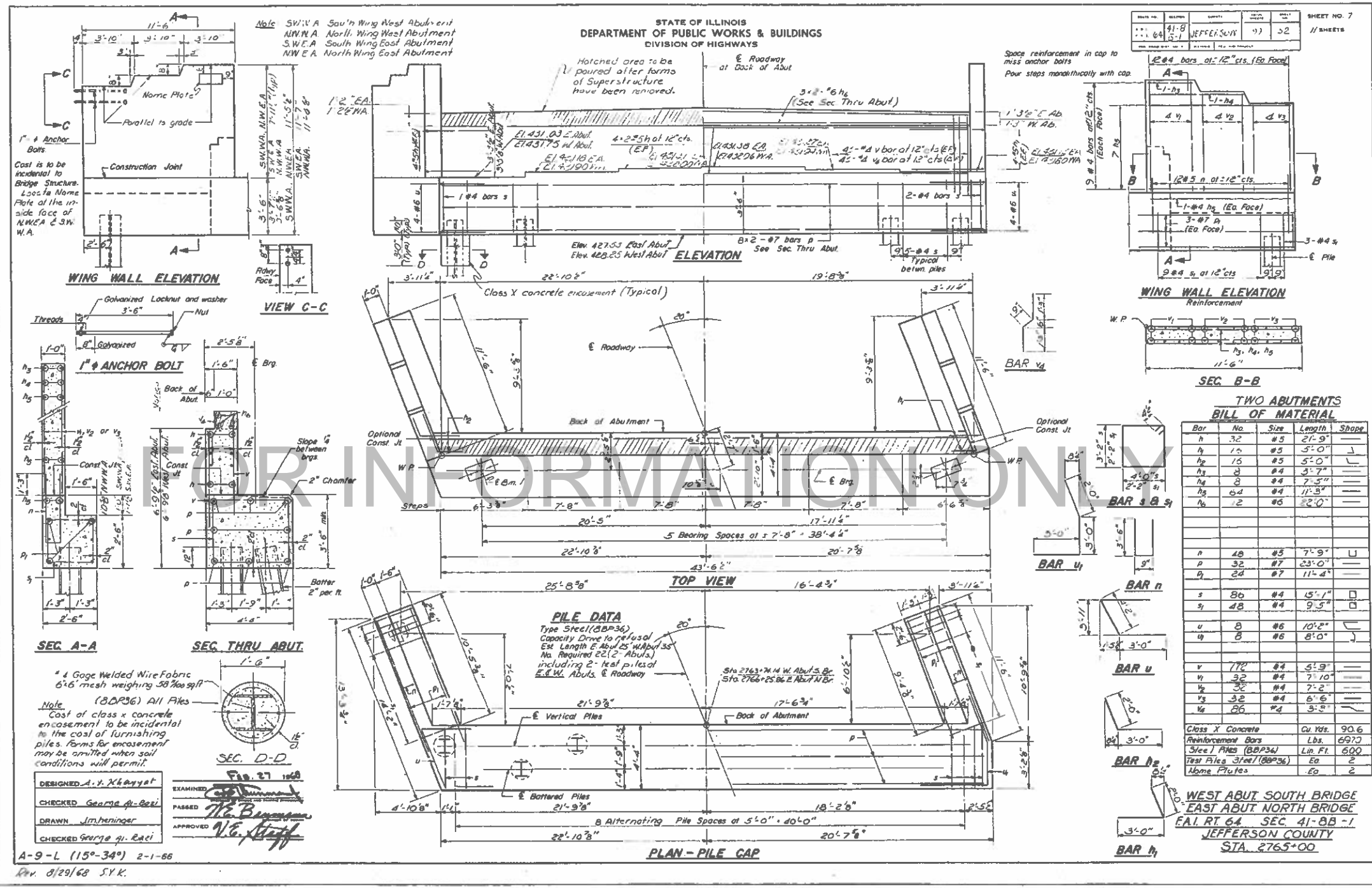
ESTABLISHED  
 APPROVED  
 APPROVED

I-2 7-2-62 Rev 11-9-62 Rev 8-16-63 Rev 12-10-63  
 Rev 8/29/68 J.Y.K.



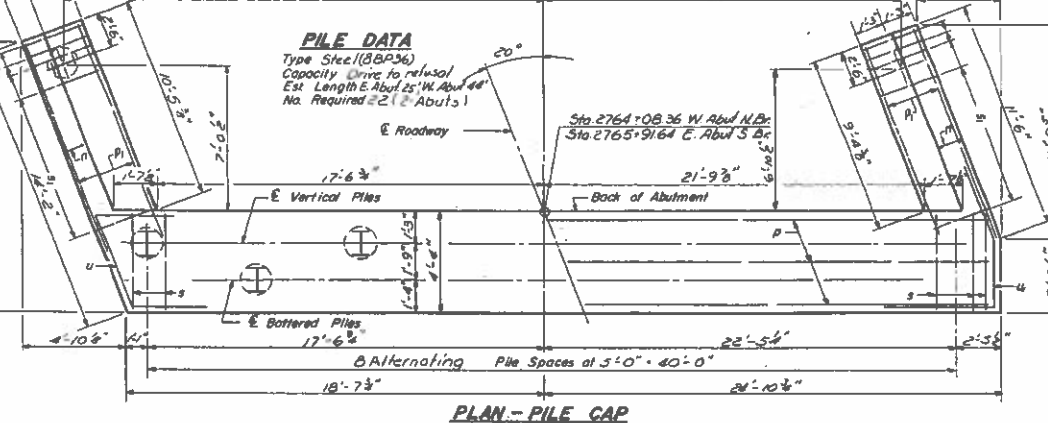
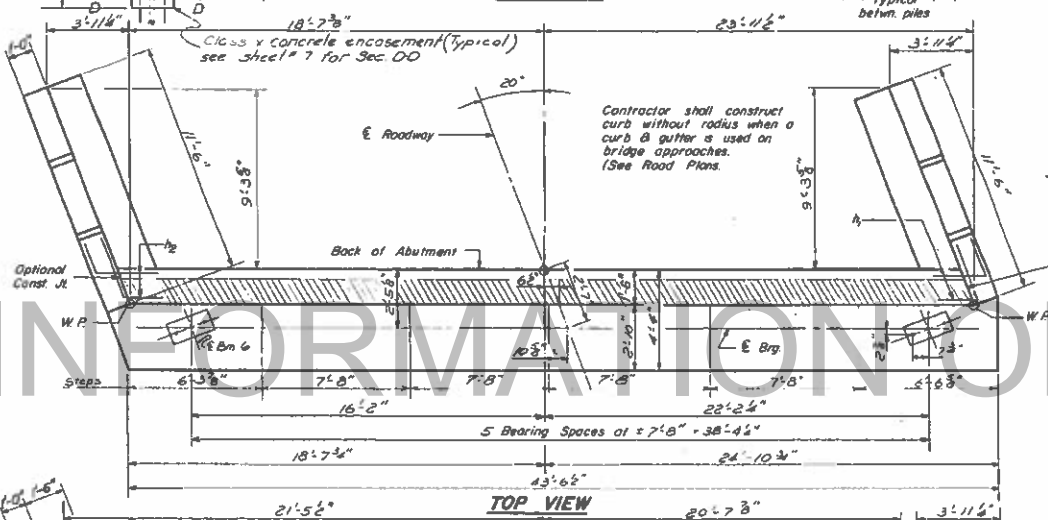
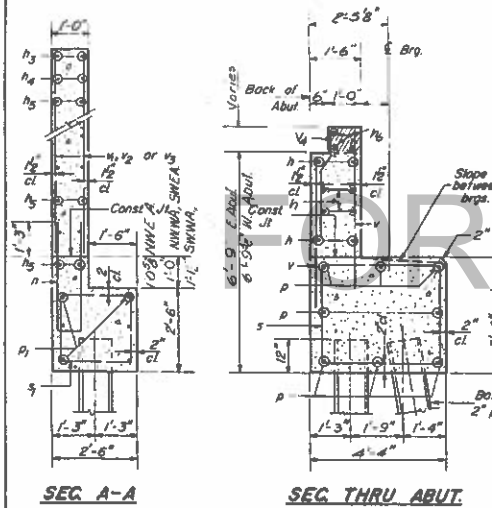
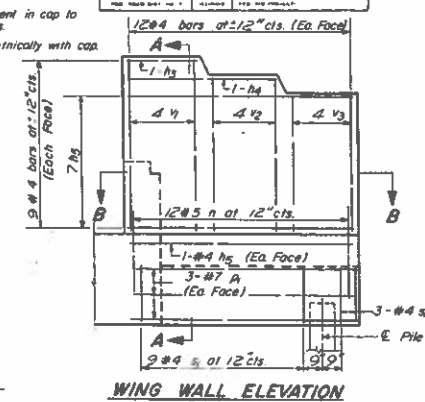
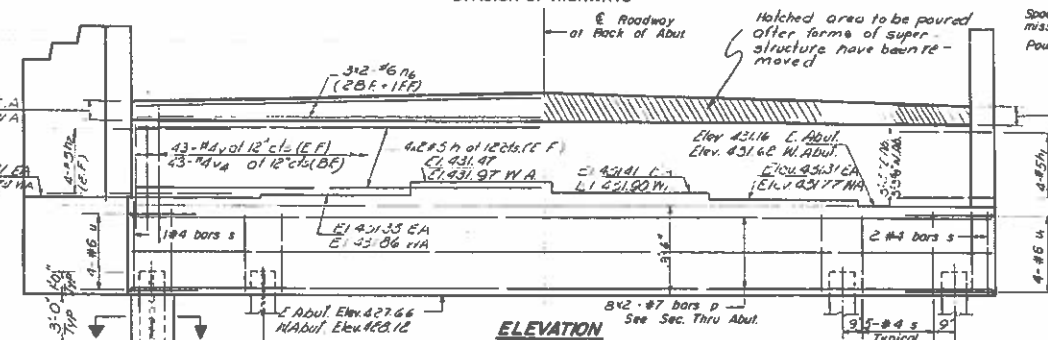
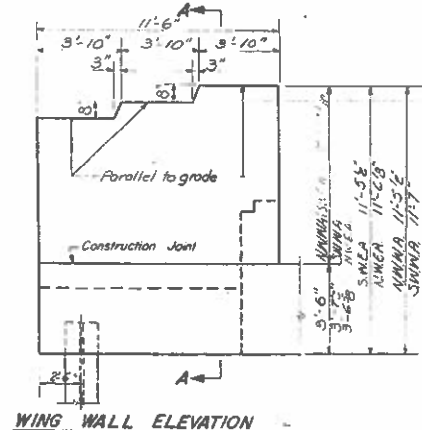
STATE OF ILLINOIS  
DEPARTMENT OF PUBLIC WORKS & BUILDINGS  
DIVISION OF HIGHWAYS

SHEET NO. 7  
JEFFERSON COUNTY  
SEC. 41-BB-1



STATE OF ILLINOIS  
DEPARTMENT OF PUBLIC WORKS & BUILDINGS  
DIVISION OF HIGHWAYS

PROJECT NO. 41-8  
JEFFERSON 99 53  
SHEET NO. 8  
11 SHEETS



**PILE DATA**  
Type Steel (BBP36)  
Capacity Drive to refusal  
Est. Length E. Abut. 25' W. Abut. 44'  
No. Required 21 (2 Abut.)

TWO ABUTMENTS  
BILL OF MATERIAL

Bar	No.	Size	Length	Shape
n	32	#5	21'-9"	—
h	16	#5	5'-0"	—
h <sub>2</sub>	16	#5	5'-0"	—
h <sub>3</sub>	8	#4	3'-7"	—
h <sub>4</sub>	8	#4	7'-3"	—
h <sub>5</sub>	64	#4	11'-3"	—
h <sub>6</sub>	12	#6	22'-0"	—
n	48	#5	7'-9"	—
p	32	#7	23'-0"	—
h	32	#7	11'-4"	—
s	86	#4	15'-1"	—
s <sub>1</sub>	48	#4	9'-5"	—
u	8	#6	10'-2"	—
u	8	#6	8'-0"	—
v	72	#4	5'-9"	—
v <sub>1</sub>	52	#4	7'-10"	—
v <sub>2</sub>	32	#4	7'-2"	—
v <sub>3</sub>	32	#4	6'-6"	—
v <sub>4</sub>	26	#4	5'-3"	—
Class K Concrete			Du. Yds.	90.6
Reinforcement Bars			Lbs.	6970
Steel Piles (BBP36)			Lin. Ft.	759

Note: N.W.W.A. North Wing West Abut.  
S.W.W.A. South Wing West Abut.  
N.W.E.A. North Wing East Abut.  
S.W.E.A. South Wing East Abut.

DESIGNED A. V. Kayyat  
CHECKED George H. Bezi  
DRAWN Jim Heninger  
CHECKED George H. Bezi

EXAMINED  
PASSED  
APPROVED

Fig. 27 1968  
A-9-L (15°-34°) 2-1-66  
Rev. 8/29/68 S.V.K.

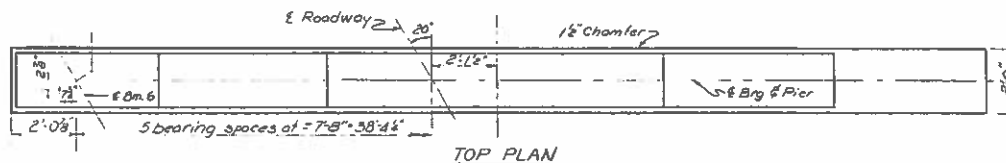
WEST ABUT NORTH BRIDGE  
EAST ABUT SOUTH BRIDGE  
FAI. RT 64 SEC. 41-8B-1  
JEFFERSON COUNTY  
STA. 2763+00

STATE OF ILLINOIS  
DEPARTMENT OF PUBLIC WORKS & BUILDINGS  
DIVISION OF HIGHWAYS

PROJECT NO.	41-B	SECTION	JEFFERSON	SHEET NO.	54	TOTAL SHEETS	11
DATE	8-1-64	BY	J.E. STAFF	SCALE			

**PILE DATA**

Type Steel (ADP36)  
Capacity 12 tons to 12' depth  
Est Length 33'  
No Req'd 108 (6 piers) including 2 test piles one test pile @ South edge of pier 1 North Bridge & one @ pier 3 South Bridge.  
Hole for 1" Anchor Bolt (Typ.)

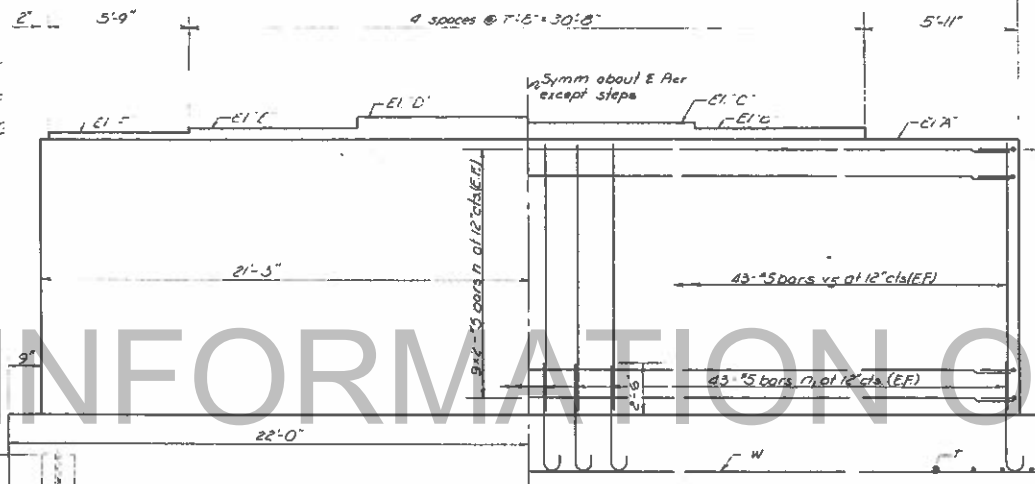


Note: Place reinforcement in footing to miss piles. Min. bar top #2 dia unless otherwise noted. Steps are poured monolithically with piers.

**SEAL ELEVATIONS**

Pier	NORTH BRIDGE					
	A	B	C	D	E	F
Pier 1	431.38	431.5	431.62	431.73	431.8	431.88
Pier 2	431.27	431.42	431.55	431.68	431.81	431.89
Pier 3	431.04	431.17	431.32	431.49	431.68	431.76

Pier	No. Br.	Elev.
Pier 1	431.38	No. Br.
Pier 2	431.51	No. Br.
Pier 3	431.77	No. Br.

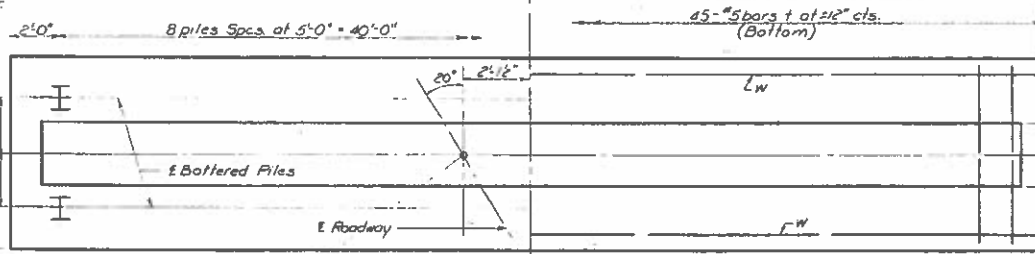


Pier	No. Br.	Elev.
Pier 1	400.38	No. Br.
Pier 2	400.27	No. Br.
Pier 3	400.17	No. Br.

**SIX PIERS BILL OF MATERIAL**

Bar	No	Size	Length	Shape
h	216	#5	21'-9"	—
n1	516	#6	4'-11"	—
s2	108	#5	4'-2"	□
t	270	#5	5'-9"	—
va	516	#5	8'-6"	—
w	72	#5	22'-6"	—

Class A Concrete	Cu Yds.	3001
Reinforcement Bars	Lbs.	17060
Steel Piles (ADP36)	Ln Ft	2438
Test Piles Steel (ADP36)	Ea	2



DESIGNED A. Y. Kharya  
CHECKED George A. Bae  
DRAWN J. M. Heninger  
CHECKED George A. Bae  
EXAMINED J. E. Staff  
PASSED J. E. Staff  
APPROVED J. E. Staff  
FEB 27 1965

North Bridge Sta. 2764+53.19 (Pier 1)  
2765+17.11 (Pier 2)  
2765+75.03 (Pier 3)  
South Bridge Sta. 2764+24.97 (Pier 1)  
2764+82.89 (Pier 2)  
2765+40.81 (Pier 3)

ALL PIERS  
NORTH & SOUTH BRIDGES  
EAL RT 64 SEC 41-BB-1  
JEFFERSON COUNTY  
STA. 2765+00

Rev. 8/29/68 J.Y.K.

