

| SI | SP | CODE NO. | ITEM | UNIT | TOTAL QUANTITY |
|----|----|----------|---------------------------------------|-------|----------------|
| | | 20200100 | EARTH EXCAVATION | CU YD | 2,015 |
| | * | 20800150 | TRENCH BACKFILL | CU YD | 206 |
| | * | 21101615 | TOPSOIL FURNISH AND PLACE, 4" | SQ YD | 4,840 |
| | | 25000400 | NITROGEN FERTILIZER NUTRIENT | POUND | 90 |
| | | 25000500 | PHOSPHORUS FERTILIZER NUTRIENT | POUND | 90 |
| | | 25000600 | POTASSIUM FERTILIZER NUTRIENT | POUND | 90 |
| | | 25100115 | MULCH, METHOD 2 | ACRE | 1.0 |
| | | 25100630 | EROSION CONTROL BLANKET | SQ YD | 284 |
| | | 28000250 | TEMPORARY EROSION CONTROL SEEDING | POUND | 200 |
| | | 28000400 | PERIMETER EROSION BARRIER | FOOT | 1,230 |
| | | 28000500 | INLET AND PIPE PROTECTION | EACH | 2 |
| | | 31100910 | SUBBASE GRANULAR MATERIAL, TYPE A 12" | SQ YD | 5,807 |
| | | 35100300 | AGGREGATE BASE COURSE, TYPE A 4" | SQ YD | 547 |
| | | 35100500 | AGGREGATE BASE COURSE, TYPE A 6" | SQ YD | 345 |

| SI | SP | CODE NO. | ITEM | UNIT | TOTAL QUANTITY |
|----|----|----------|--|-------|----------------|
| | * | 40201000 | AGGREGATE FOR TEMPORARY ACCESS | TON | 20 |
| | | 40600275 | BITUMINOUS MATERIALS (PRIME COAT) | POUND | 2,412 |
| | | 40600290 | BITUMINOUS MATERIALS (TACK COAT) | POUND | 333 |
| | | 40600982 | HOT-MIX ASPHALT SURFACE REMOVAL - BUTT JOINT | SQ YD | 37 |
| | | 40600990 | TEMPORARY RAMP | SQ YD | 37 |
| | * | 40603310 | HOT-MIX ASPHALT SURFACE COURSE, MIX "C", N50 | TON | 36 |
| | * | 40603340 | HOT-MIX ASPHALT SURFACE COURSE, MIX "D", N70 | TON | 83 |
| | * | 40701981 | HOT-MIX ASPHALT PAVEMENT (FULL-DEPTH), 15" | SQ YD | 129 |
| | | 42000301 | PORTLAND CEMENT CONCRETE PAVEMENT 8" (JOINTED) | SQ YD | 2,918 |
| | * | 42300200 | PORTLAND CEMENT CONCRETE DRIVEWAY PAVEMENT, 6 INCH | SQ YD | 61 |
| | | 42400100 | PORTLAND CEMENT CONCRETE SIDEWALK 4 INCH | SQ FT | 5,162 |
| | * | 42400800 | DETECTABLE WARNINGS | SQ FT | 320 |
| | | 44000100 | PAVEMENT REMOVAL | SQ YD | 3,590 |
| | * | 44000157 | HOT-MIX ASPHALT SURFACE REMOVAL, 2" | SQ YD | 204 |

NOTES: SP - SEE PROJECT SPECIFIC SPECIAL PROVISIONS
SI - SPECIALTY ITEM

MODEL: D:\delin\16176-Highland Roundabout\Mapstation\CADD Drawing\20181117\6-SHSO2.dgn



USER NAME = nlsk.moore
DESIGNED -
DRAWN -
PLOT SCALE = 100.0000 "/in.
CHECKED -
DATE = 12/20/2018

REVISED -
REVISED -
REVISED -
REVISED -

STATE OF ILLINOIS
DEPARTMENT OF TRANSPORTATION

SUMMARY OF QUANTITIES

SCALE: SHEET 1 OF 3 SHEETS STA. TO STA.

| F.A.U. RTE. | SECTION | COUNTY | TOTAL SHEETS | SHEET NO. |
|---------------------------|----------------|---------|--------------|-----------|
| 8846 | 17-00070-00-PV | MADISON | 55 | 4 |
| CONTRACT NO. 97686 | | | | |
| ILLINOIS FED. AID PROJECT | | | | |

| SI | SP | CODE NO. | ITEM | UNIT | TOTAL QUANTITY |
|----|----|----------|---|-------|----------------|
| | * | 44000200 | DRIVEWAY PAVEMENT REMOVAL | SQ YD | 52 |
| | | 44000500 | COMBINATION CURB AND GUTTER REMOVAL | FOOT | 1,278 |
| | * | 44000600 | SIDEWALK REMOVAL | SQ FT | 2,809 |
| | | 44004250 | PAVED SHOULDER REMOVAL | SQ YD | 661 |
| | | 44300100 | AREA REFLECTIVE CRACK CONTROL TREATMENT | SQ YD | 866 |
| | * | 48203029 | HOT-MIX ASPHALT SHOULDERS, 8" | SQ YD | 601 |
| | | 50105220 | PIPE CULVERT REMOVAL | FOOT | 36 |
| | | 54213657 | PRECAST REINFORCED CONCRETE FLARED END SECTIONS 12" | EACH | 1 |
| | | 54213660 | PRECAST REINFORCED CONCRETE FLARED END SECTIONS 15" | EACH | 1 |
| | | 54216210 | REINFORCED CONCRETE PIPE TEE, 30" PIPE WITH 12" RISER | EACH | 1 |
| | * | 550A0050 | STORM SEWERS, CLASS A, TYPE 1 12" | FOOT | 444 |
| | * | 550A0070 | STORM SEWERS, CLASS A, TYPE 1 15" | FOOT | 166 |
| | * | 55100500 | STORM SEWER REMOVAL 12" | FOOT | 41 |
| | * | 55100700 | STORM SEWER REMOVAL 15" | FOOT | 74 |

| SI | SP | CODE NO. | ITEM | UNIT | TOTAL QUANTITY |
|----|----|----------|--|-------|----------------|
| * | * | 56100800 | WATER MAIN 10" | FOOT | 95 |
| * | * | 56105100 | WATER VALVES 10" | EACH | 1 |
| * | * | 56109210 | WATER VALVES TO BE ADJUSTED | EACH | 4 |
| | | 60221100 | MANHOLES, TYPE A, 5'-DIAMETER, TYPE 1 FRAME, CLOSED LID | EACH | 1 |
| | * | 60240220 | INLETS, TYPE B, TYPE 3 FRAME AND GRATE | EACH | 10 |
| | | 60240328 | INLETS, TYPE B, TYPE 24 FRAME AND GRATE | EACH | 6 |
| | * | 60255500 | MANHOLES TO BE ADJUSTED | EACH | 3 |
| | | 60500060 | REMOVING INLETS | EACH | 6 |
| | | 60600095 | CLASS SI CONCRETE (OUTLET) | CU YD | 4 |
| | | 60600605 | CONCRETE CURB, TYPE B | FOOT | 273 |
| | * | 60604900 | COMBINATION CONCRETE CURB & GUTTER, TYPE B-6.18 VARIABLE WIDTH GUTTER FLAG | FOOT | 593 |
| | | 60605000 | COMBINATION CONCRETE CURB AND GUTTER, TYPE B-6.24 | FOOT | 1,017 |
| | | 60605900 | COMBINATION CONCRETE CURB AND GUTTER, TYPE B-9.12 | FOOT | 276 |
| | | 60608300 | COMBINATION CONCRETE CURB AND GUTTER, TYPE M-2.12 | FOOT | 383 |

NOTES: SP - SEE PROJECT SPECIFIC SPECIAL PROVISIONS
SI - SPECIALTY ITEM

MODEL: D:\in\16776-Highland Roundabout\Map\resolutions\CADD Drawing\0816176-SHS02.dwg
FILE NAME: 16776-Highland Roundabout\Map\resolutions\CADD Drawing\0816176-SHS02.dwg



USER NAME = nick.moore
DESIGNED -
DRAWN -
PLOT SCALE = 100,0000 / in.
CHECKED -
DATE -
REVISER -
REVISOR -

DESIGNED -
DRAWN -
CHECKED -
DATE -
REVISER -
REVISOR -

DESIGNED -
DRAWN -
CHECKED -
DATE -
REVISER -
REVISOR -

**STATE OF ILLINOIS
DEPARTMENT OF TRANSPORTATION**

SUMMARY OF QUANTITIES

SCALE: SHEET 2 OF 3 SHEETS STA. TO STA.

| F.A.U. RTE. | SECTION | COUNTY | TOTAL SHEETS | SHEET NO. |
|---------------------------|----------------|---------|--------------|-----------|
| 8846 | 17-00070-00-PV | MADISON | 55 | 5 |
| CONTRACT NO. 97686 | | | | |
| ILLINOIS FED. AID PROJECT | | | | |

ENTRANCES

| STATION | OFFSET | ENTRANCE TYPE | EXISTING SURFACE TYPE | AGG BASE CSE TA 4 (SQ YD) | AGGREGATE TEMP ACCESS (TON) | PCC DRIVEWAY PVT 6 (SQ YD) | DRIVEWAY PAVT REM (SQ YD) |
|----------|--------|---------------|-----------------------|---------------------------|-----------------------------|----------------------------|---------------------------|
| BROADWAY | | | | | | | |
| 7+82 | RT | PE | CONC | 24 | 8 | 24 | 25 |
| 12+49 | RT | FE | EARTH | | | | |
| IBERG | | | | | | | |
| 97+72 | LT | PE | CONC | 22 | 7 | 22 | 12 |
| 98+55 | LT | PE | CONC | 15 | 5 | 15 | 15 |
| TOTAL | | | | 61 | 20 | 61 | 52 |

SIDEWALK

| STATION | STATION | OFFSET | PC CONC SIDEWALK 4 (NOTE 1) (SQ FT) | AGG BASE CSE TA 4 (SQ YD) | DETECTABLE WARNINGS (NOTE 1) (SQ FT) | SIDEWALK REM (SQ FT) |
|----------|---------|--------|-------------------------------------|---------------------------|--------------------------------------|----------------------|
| BROADWAY | | | | | | |
| 7+46 | 9+55 | RT | | | | 1,735 |
| 7+99 | 9+55 | RT | 2,086 | 232 | 40 | |
| 8+86 | 9+82 | LT | 1,433 | 159 | 40 | |
| 8+88 | 9+00 | RT/LT | 241 | | 40 | |
| 9+65 | 9+75 | LT | | | | 581 |
| 9+80 | 10+29 | RT | 104 | | 40 | |
| 10+02 | 10+05 | LT | 178 | | 40 | |
| 10+02 | 10+22 | LT | 92 | | | |
| 10+22 | 10+33 | LT | | | | 395 |
| 10+49 | 10+53 | RT | | | | 98 |
| 11+00 | 11+95 | RT | 651 | 72 | 40 | |
| 11+00 | 11+14 | LT | 211 | 23 | 40 | |
| 11+03 | 11+14 | RT/LT | 166 | | 40 | |
| TOTAL | | | 5,162 | 486 | 320 | 2,809 |

SIDEWALK NOTES:

- SIDEWALK RAMPS ACCESSIBLE TO THE DISABLED ARE REQUIRED. SEE PLAN SHEETS FOR LOCATIONS AND TYPES. SEE CONSTRUCTION DETAILS SHEET AND HIGHWAY STANDARD 424001 FOR CURB RAMP DETAILS.
- SIDEWALK QUANTITIES INCLUDE CONCRETE PADS FOR PARK BENCHES.

SEEDING

| STATION | STATION | OFFSET | SEEDING CL 1A SP (ACRE) | MULCH METHOD 2 (NOTE 3) (ACRE) | NITROGEN FERT NUTR (NOTE 1) (POUND) | PHOSPHORUS FERT NUTR (NOTE 1) (POUND) | POTASIAM FERT NUTR (NOTE 1) (POUND) | TEMP EROS CNTL SEEDING (NOTE 2) (POUND) | TOPSOIL FURNISH & PLACE 4" (SQ YD) |
|----------|---------|--------|-------------------------|--------------------------------|-------------------------------------|---------------------------------------|-------------------------------------|---|------------------------------------|
| BROADWAY | | | | | | | | | |
| 7+46 | 9+96 | LT | 0.09 | 0.09 | 8 | 8 | 8 | 19 | 452 |
| 7+46 | 9+64 | RT | 0.09 | 0.09 | 8 | 8 | 8 | 17 | 403 |
| 8+39 | 9+26 | RT/LT | 0.02 | 0.02 | 2 | 2 | 2 | 5 | 1063 |
| 9+59 | 10+45 | RT/LT | 0.14 | 0.14 | 12 | 12 | 12 | 27 | 1166 |
| 10+02 | 14+62 | LT | 0.24 | 0.24 | 22 | 22 | 22 | 48 | 115 |
| 10+55 | 14+53 | RT | 0.22 | 0.22 | 20 | 20 | 20 | 44 | 658 |
| 10+80 | 12+82 | RT/LT | 0.03 | 0.03 | 3 | 3 | 3 | 6 | 141 |
| IBERG | | | | | | | | | |
| 96+85 | 99+00 | LT | 0.04 | 0.04 | 3 | 3 | 3 | 7 | 181 |
| 96+85 | 99+00 | RT | 0.03 | 0.03 | 3 | 3 | 3 | 6 | 164 |
| 99+00 | 99+59 | LT/RT | 0.01 | 0.01 | 1 | 1 | 1 | 2 | 166 |
| 101+13 | 101+71 | LT/RT | 0.01 | 0.01 | 1 | 1 | 1 | 3 | 221 |
| 101+71 | 102+75 | LT | 0.03 | 0.03 | 3 | 3 | 3 | 7 | 42 |
| 101+71 | 102+75 | RT | 0.05 | 0.05 | 4 | 4 | 4 | 9 | 68 |
| TOTAL | | | 1.0 | 1.0 | 90 | 90 | 90 | 200 | 4,840 |

SEEDING NOTES:

- THE APPLICATION RATE FOR FERTILIZER NUTRIENTS IS 90 LBS/ACRE FOR ESTIMATION PURPOSES.
- THE QUANTITY FOR TEMPORARY EROSION CONTROL SEEDING ASSUMES 2 SEPARATE APPLICATIONS AT A RATE OF 100 LBS/ACRE PER APPLICATION. THE CONTRACTOR SHALL APPLY AS NECESSARY AND AS DIRECTED BY THE ENGINEER.
- THE APPLICATION RATE FOR MULCH METHOD 2 IS 2 TONS/ACRE.
- SEEDING QUANTITIES ROUNDED UP TO THE NEAREST ACRE.

EROSION CONTROL

| STATION | STATION | OFFSET | EROSION CONTR BLANKET (SQ YD) | ABOVE GRADE INLT FLTR (EACH) | PERIMETER EROS BAR (FOOT) | INLET & PIPE PROTECTION (EACH) |
|----------|---------|--------|-------------------------------|------------------------------|---------------------------|--------------------------------|
| BROADWAY | | | | | | |
| 7+31 | | LT | | | | 1 |
| 7+46 | 9+23 | RT/LT | | | 325 | |
| 9+00 | | RT | | | | 1 |
| 9+03 | 10+10 | LT | | 3 | | |
| 9+03 | 10+10 | RT | | 3 | | |
| 10+10 | 14+62 | LT | 124 | 1 | | |
| 10+10 | 14+62 | RT | 159 | 3 | | |
| 10+86 | 14+62 | RT/LT | | | 425 | |
| IBERG | | | | | | |
| 97+60 | 99+57 | RT/LT | | | 300 | |
| 97+98 | 98+37 | LT | | 3 | | |
| 97+98 | 98+37 | RT | | 3 | | |
| 101+17 | 102+76 | RT/LT | | | 180 | |
| TOTAL | | | 284 | 16 | 1,230 | 2 |

EARTHWORK

| STATION | STATION | EARTH EXCAVATION (CU YD) | EARTH EXCAVATION ADJUSTED FOR SHRINKAGE (NOTE 1) (CU YD) | EMBANKMENT (NOTE 2) (CU YD) | EARTHWORK BALANCE WASTE (+) OR SHORTAGE (-) (NOTE 3) (CU YD) |
|----------|---------|--------------------------|--|-----------------------------|--|
| BROADWAY | | | | | |
| 7+46 | 10+00 | 335 | 250 | 650 | -400 |
| 10+00 | 14+62 | 1240 | 930 | 455 | 475 |
| IBERG | | | | | |
| 96+86 | 99+00 | 130 | 90 | | 90 |
| 101+71 | 102+76 | 310 | 230 | 25 | 205 |
| TOTAL | | 2,015 | 1,500 | 1,130 | 370 |

EARTHWORK NOTES:

- ESTIMATED SHRINKAGE FACTOR = 25%.
- APPROXIMATE EMBANKMENT QUANTITY IS SHOWN FOR INFORMATION ONLY.
- APPROXIMATE EARTHWORK BALANCE IS SHOWN FOR INFORMATION ONLY.

MODEL: D:\delin\... FILE NAME: P:\CS\16176-Highland Roundabout\Map\station\CADD\Drawings\0816176-SiteSchedule.dgn



USER NAME = nick.moore
 DESIGNED -
 DRAWN -
 CHECKED -
 DATE -
 PLOT SCALE = 40,000' / 1"
 PLOT DATE = 12/20/2018

DESIGNED -
 DRAWN -
 CHECKED -
 DATE -
 REVISED -
 REVISED -
 REVISED -
 REVISED -

STATE OF ILLINOIS
 DEPARTMENT OF TRANSPORTATION

SCHEDULES
 SCALE: SHEET 1 OF 3 SHEETS STA. TO STA.

| F.A.U. RTE. | SECTION | COUNTY | TOTAL SHEETS | SHEET NO. |
|---------------------------|----------------|---------|--------------|-----------|
| 8846 | 17-00070-00-PV | MADISON | 55 | 13 |
| CONTRACT NO. 97686 | | | | |
| ILLINOIS FED. AID PROJECT | | | | |

PAVEMENT

| STATION | STATION | OFFSET | SUB GRAN MAT A 12 (SQ YD) | AGG BASE CSE TA 6 (SQ YD) | BIT MATLS PR CT (POUND) | BIT MATLS TACK CT (POUND) | HMA SC MIX C N50 (NOTE 1) (TON) | HMA SC MIX D N70 (NOTE 1) (TON) | HMA PAVT FD 15 (NOTE 1) (SQ YD) | CONC PAVER PAVEMENT (SQ YD) | PCC PAVT 8 IN JOINTED (SQ YD) | AREA REF CR CON TREAT (SQ YD) | HMA SHOULDER 8 (SQ YD) |
|----------|---------|--------|---------------------------|---------------------------|-------------------------|---------------------------|---------------------------------|---------------------------------|---------------------------------|-----------------------------|-------------------------------|-------------------------------|------------------------|
| BROADWAY | | | | | | | | | | | | | |
| 7+46 | 10+01 | RT/LT | 1,866 | | | | | | | | | | |
| 7+46 | 8+41 | RT/LT | | | | 112 | 28 | | | | | 247 | |
| 7+57 | 8+40 | LT | | | 341 | | | 49 | | | | 49 | 93 |
| 8+39 | 8+88 | RT/LT | | | 220 | | | | | | | | 98 |
| 8+39 | 12+82 | RT/LT | | | | | | | | | 1,860 | | |
| 9+40 | 10+63 | RT/LT | | | | | | | 572 | | | | |
| 10+01 | 14+62 | RT/LT | 3,211 | | | | | | | | | | |
| 10+02 | 11+04 | LT | | 235 | 481 | | 24 | | | | | | |
| 10+61 | 11+06 | RT/LT | | 110 | 231 | | 12 | | | | | | |
| 11+29 | 14+62 | LT | | | 494 | | | | | | | | 190 |
| 11+80 | 14+62 | RT | | | 427 | | | | | | | | 220 |
| 12+82 | 14+46 | RT | | | 88 | | | 32 | | | | 32 | |
| 12+82 | 14+55 | LT | | | 130 | | | 48 | | | | 48 | |
| 12+82 | 14+62 | RT/LT | | | | 221 | | 55 | | | | 490 | |
| IBERG | | | | | | | | | | | | | |
| 98+30 | 99+00 | RT/LT | 312 | | | | | | 67 | | 498 | | |
| 101+71 | 102+75 | RT/LT | 418 | | | | | | 27 | | 560 | | |
| TOTAL | | | 5,807 | 345 | 2,412 | 333 | 36 | 83 | 129 | 666 | 2,918 | 866 | 601 |

PAVEMENT NOTES:

- APPLICATION RATES USED FOR QUANTITY ESTIMATES ARE AS FOLLOWS:
 HOT-MIX ASPHALT: .056 TON/SQ YD/IN
 BIT MATLS PRIME COAT (AGG BASE): .25 LB/SQ FT
 BIT MATLS TACK COAT (HMA LIFTS): .025 LB/SQ FT
 BIT MATLS TACK COAT (MILLED HMA): 0.05 LB/SQ FT

PAVEMENT MARKING

| STATION | STATION | EPOXY PVT MK LETTERS & SYMBOLS (SQ FT) | EPOXY PVT MK LINE 4 (FOOT) | EPOXY PVT MK LINE 12 (FOOT) | EPOXY PVT MK LINE 24 (FOOT) | PAINT CURB (FOOT) | CURB REFLECTORS (EACH) | RAISED REFL PAVT MKR (EACH) | PVT MRKG REM WTR BL (SQ FT) |
|----------|---------|--|----------------------------|-----------------------------|-----------------------------|-------------------|------------------------|-----------------------------|-----------------------------|
| BROADWAY | | | | | | | | | |
| 3+57 | 7+46 | | 777 | | | | | | 94 |
| 7+46 | 9+23 | | 959 | 41 | 83 | 210 | 14 | | |
| 9+23 | 11+14 | 16 | 417 | 44 | 229 | 255 | 28 | | |
| 11+14 | 14+62 | | 1707 | 113 | | 423 | 18 | 9 | |
| 14+62 | 18+62 | | 674 | | | | | | 97 |
| IBERG | | | | | | | | | |
| 93+20 | 97+20 | 11 | 839 | | | | | | |
| 93+20 | 98+30 | | | | | | | | 217 |
| 97+20 | 102+23 | 16 | 1707 | 147 | | | | | |
| 102+23 | 106+41 | 11 | 836 | | | | | | |
| 102+76 | 106+41 | | | | | | | | 143 |
| TOTAL | | 54 | 7,916 | 345 | 312 | 888 | 60 | 9 | 551 |

PAVEMENT MARKING NOTES:

- SEE HIGHWAY STANDARD 780001 FOR PAVEMENT MARKING DETAILS.
- SEE HIGHWAY STANDARD 781001 FOR RAISED REFLECTIVE PAVEMENT MARKING STANDARDS
 CURB REFLECTOR QUANTITY INCLUDES THE FOLLOWING TYPES:
 52 EACH ONE-WAY AMBER REFLECTORS
 8 EACH ONE-WAY CRYSTAL REFLECTORS
 60 EACH TOTAL

PAVEMENT REMOVAL

| STATION | STATION | OFFSET | HMA SURF REM BUTT JT (SQ YD) | TEMPORARY RAMP (SQ YD) | PAVEMENT REMOVAL (SQ YD) | HMA SURF REM VARIABLE DEPTH (SQ YD) | HMA SURF REM 2 (SQ YD) | PAVED SHOULDER REMOVAL (SQ YD) |
|----------|---------|--------|------------------------------|------------------------|--------------------------|-------------------------------------|------------------------|--------------------------------|
| BROADWAY | | | | | | | | |
| 7+46 | 8+41 | RT/LT | 19 | 19 | | 230 | | |
| 7+46 | 8+28 | LT | | | | | | 52 |
| 7+46 | 9+32 | RT | | | | | | 120 |
| 7+49 | 10+01 | RT/LT | | | 1,368 | | | |
| 10+01 | 12+82 | RT/LT | | | 1,472 | | | |
| 10+82 | 14+62 | LT | | | | | | 247 |
| 11+16 | 14+62 | RT | | | | | | 242 |
| 12+82 | 14+62 | RT/LT | 18 | 18 | | 471 | | |
| IBERG | | | | | | | | |
| 96+86 | 98+30 | RT/LT | | | 77 | | | |
| 98+30 | 99+00 | RT/LT | | | 422 | | | |
| 98+97 | 99+37 | RT | | | | | 45 | |
| 100+75 | 102+10 | RT | | | | | 159 | |
| 101+71 | 102+75 | RT/LT | | | 251 | | | |
| TOTAL | | | 37 | 37 | 3,590 | 701 | 204 | 661 |

CURB & GUTTER

| STATION | STATION | OFFSET | CONC CURB TB (FOOT) | COMB CC&G TB 6.18 VWGF (FOOT) | COMB CC&G TB 6.24 (FOOT) | COMB CC&G TB 9.12 (FOOT) | COMB CC&G TM 2.12 (FOOT) | COMB CC&G TM 2.24 (FOOT) | COMB CURB GUTTER REM (FOOT) |
|----------|---------|--------|---------------------|-------------------------------|--------------------------|--------------------------|--------------------------|--------------------------|-----------------------------|
| BROADWAY | | | | | | | | | |
| 8+39 | 9+26 | LT/RT | | 199 | | | | | |
| 8+57 | 9+93 | LT | | | | | | | 217 |
| 8+87 | 9+29 | LT | | | 42 | | | | |
| 8+90 | 9+65 | RT | | | 152 | | | | |
| 9+28 | 9+97 | LT | 105 | | | | | | |
| 9+29 | 9+99 | LT | | | | | | 109 | |
| 9+31 | 9+69 | RT | | | | | | | 117 |
| 9+40 | 10+63 | LT/RT | | | | | 383 | | |
| 9+58 | 10+47 | LT/RT | | | | 276 | | | |
| 9+74 | 10+31 | RT | | 129 | | | | | |
| 9+95 | 10+01 | LT | | 140 | | | | | |
| 10+01 | 10+65 | LT | | | | | | | 179 |
| 10+02 | 11+13 | LT | | | 177 | | | | |
| 10+50 | 11+68 | RT | | | | | | 177 | |
| 10+52 | 11+67 | RT | 168 | | | | | | |
| 10+53 | 11+16 | RT | | | | | | | 129 |
| 10+53 | 10+50 | RT | | | 12 | | | | |
| 10+80 | 12+82 | LT/RT | | 125 | | | | | |
| IBERG | | | | | | | | | |
| 96+86 | 99+00 | LT | | | 213 | | | | 214 |
| 96+86 | 99+00 | RT | | | 215 | | | | 214 |
| 101+74 | 102+75 | LT | | | 101 | | | | 104 |
| 101+71 | 102+75 | RT | | | 105 | | | | 104 |
| TOTAL | | | 273 | 593 | 1,017 | 276 | 383 | 286 | 1,278 |

MODEL: D:\delin\... FILE NAME: P:\16176-Highland Roundabout\Information\CADD\Drawings\IBERG\16176-SH-Schedule.dgn



USER NAME = nick.moore
 DESIGNED -
 DRAWN -
 CHECKED -
 DATE -
 PLOT SCALE = 40,0000' / 1"
 PLOT DATE = 12/20/2018

DESIGNED -
 DRAWN -
 CHECKED -
 DATE -

REVISED -
 REVISED -
 REVISED -
 REVISED -

**STATE OF ILLINOIS
 DEPARTMENT OF TRANSPORTATION**

SCHEDULES

SCALE: SHEET 2 OF 3 SHEETS STA. TO STA.

| F.A.U. RTE. | SECTION | COUNTY | TOTAL SHEETS | SHEET NO. |
|---------------------------|----------------|---------|--------------|-----------|
| 8846 | 17-00070-00-PV | MADISON | 55 | 14 |
| CONTRACT NO. 97686 | | | | |
| ILLINOIS FED. AID PROJECT | | | | |

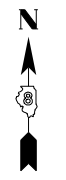
PLAN SHEET LEGEND

- PROPOSED PCC SIDEWALK
- PROPOSED HMA PAVEMENT (FULL-DEPTH)
- PROPOSED HMA SURFACE COURSE
- TRUCK APRON
- CONSTRUCTION LIMITS
- ABOVE GRADE INLET FILTERS
- EROSION CONTROL BLANKET
- PERIMETER EROSION BARRIER

PROP. CURVE PR_BROADWAY1
 PI STA. = 8+88.85
 $\Delta = 18^\circ 40' 28''$ (LT)
 $D = 8^\circ 11' 06''$
 $R = 700.00'$
 $T = 115.10'$
 $L = 228.15'$
 $E = 9.40'$
 e = SEE I.D.S. SHEET 6
 T.R. = N/A
 S.E. RUN = N/A
 P.C. STA. = 7+73.76
 P.T. STA. = 10+01.91

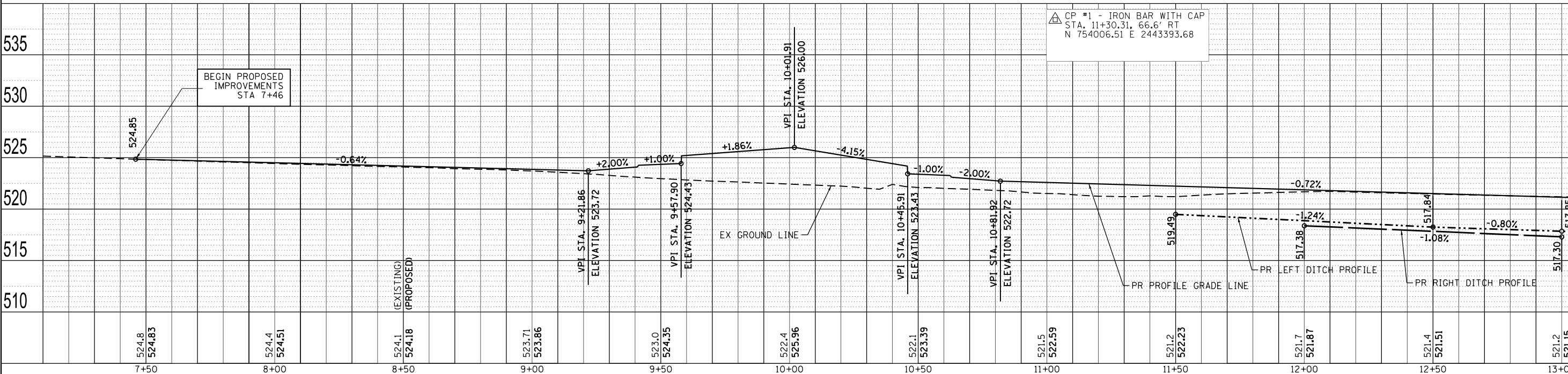
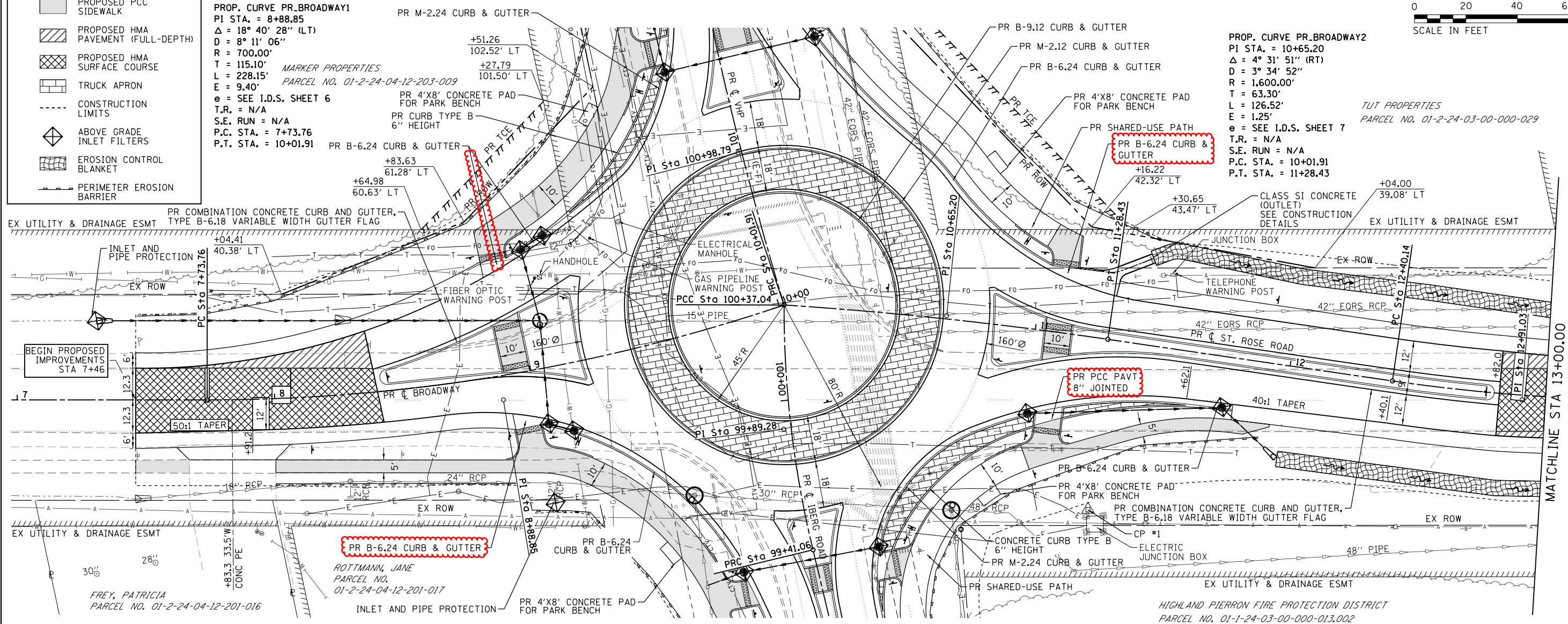
MARKER PROPERTIES
 PARCEL NO. 01-2-24-04-12-203-009
 PR M-2.24 CURB & GUTTER
 +51.26
 102.52' LT
 +27.79
 101.50' LT

PROP. CURVE PR_BROADWAY2
 PI STA. = 10+65.20
 $\Delta = 4^\circ 31' 51''$ (RT)
 $D = 3^\circ 34' 52''$
 $R = 1,600.00'$
 $T = 63.30'$
 $L = 126.52'$
 $E = 1.25'$
 e = SEE I.D.S. SHEET 7
 T.R. = N/A
 S.E. RUN = N/A
 P.C. STA. = 10+01.91
 P.T. STA. = 11+28.43



| | |
|-----------|--|
| DATE | |
| BY | |
| PLAN | |
| REVIEWED | |
| PLOTTED | |
| ALIGNED | |
| CHECKED | |
| NO. _____ | |
| NOTE BOOK | |
| NO. _____ | |
| FILE NAME | |
| NO. _____ | |

| | |
|--------------------|--|
| DATE | |
| BY | |
| PROFILE | |
| REVIEWED | |
| PLOTTED | |
| GRADES CHECKED | |
| STRUCTURE NOTATING | |
| CHKD | |
| NO. _____ | |



CP #1 - IRON BAR WITH CAP
 STA. 11+30.31, 66.6' RT
 N 754006.51 E 2443393.68



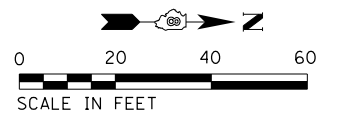
| | | | |
|--------------|--------------|------------|-----------|
| USER NAME = | billindahl | DESIGNED - | REVISED - |
| | | DRAWN - | REVISED - |
| PLOT SCALE = | 40,000' / 1" | CHECKED - | REVISED - |
| PLOT DATE = | 12/21/2018 | DATE - | REVISED - |

STATE OF ILLINOIS
 DEPARTMENT OF TRANSPORTATION

PLAN & PROFILE SHEETS

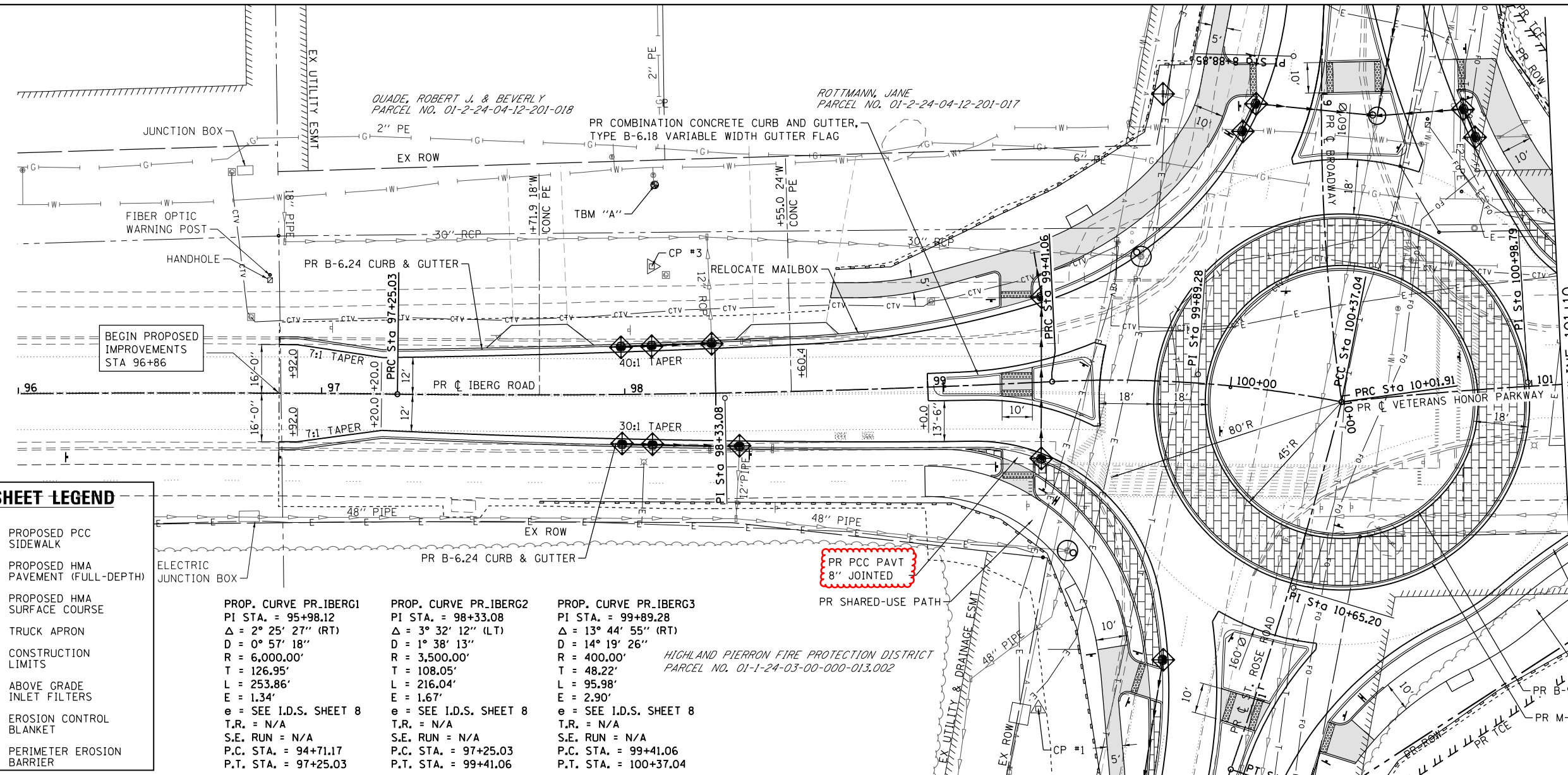
SCALE: 1"=20' SHEET 1 OF 4 SHEETS STA. 7+50 TO STA. 13+00

| | | | | |
|-------------|-------------|----------|------------------|--------------------|
| F.A.U. RTE. | SECTION | COUNTY | TOTAL SHEETS | SHEET NO. |
| 8846 | 17-00070-PV | MADISON | 55 | 16 |
| | | | | CONTRACT NO. 97686 |
| | | ILLINOIS | FED. AID PROJECT | |



| | |
|-------------------|------|
| PLAN | DATE |
| BY | |
| REVIEWED | |
| PLOTTED | |
| ALIGNMENT CHECKED | |
| GRADES CHECKED | |
| NOTE BOOK NO. | |
| FILE NAME | |
| PROJECT NAME | |

| | |
|----------------------------|------|
| PROFILE | DATE |
| BY | |
| REVIEWED | |
| PLOTTED | |
| GRADES CHECKED | |
| STRUCTURE NOTATING CHECKED | |
| NOTE BOOK NO. | |
| FILE NAME | |
| PROJECT NAME | |



PLAN SHEET LEGEND

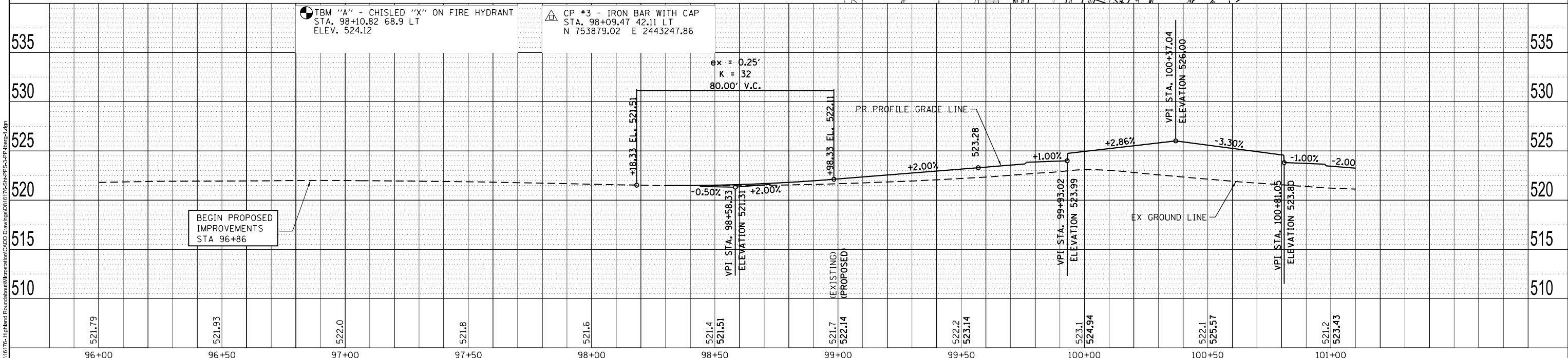
- PROPOSED PCC SIDEWALK
- PROPOSED HMA PAVEMENT (FULL-DEPTH)
- PROPOSED HMA SURFACE COURSE
- TRUCK APRON
- CONSTRUCTION LIMITS
- ABOVE GRADE INLET FILTERS
- EROSION CONTROL BLANKET
- PERIMETER EROSION BARRIER

| | | |
|---|---|--|
| <p>PROP. CURVE PR_IBERG1 PI STA. = 95+98.12 Δ = 2° 25' 27" (RT) D = 0° 57' 18" R = 6,000.00' T = 126.95' L = 253.86' E = 1.34' e = SEE I.D.S. SHEET 8 T.R. = N/A S.E. RUN = N/A P.C. STA. = 94+71.17 P.T. STA. = 97+25.03</p> | <p>PROP. CURVE PR_IBERG2 PI STA. = 98+33.08 Δ = 3° 32' 12" (LT) D = 1° 38' 13" R = 3,500.00' T = 108.05' L = 216.04' E = 1.67' e = SEE I.D.S. SHEET 8 T.R. = N/A S.E. RUN = N/A P.C. STA. = 97+25.03 P.T. STA. = 99+41.06</p> | <p>PROP. CURVE PR_IBERG3 PI STA. = 99+89.28 Δ = 13° 44' 55" (RT) D = 14° 19' 26" R = 400.00' T = 48.22' L = 95.98' E = 2.90' e = SEE I.D.S. SHEET 8 T.R. = N/A S.E. RUN = N/A P.C. STA. = 99+41.06 P.T. STA. = 100+37.04</p> |
|---|---|--|

HIGHLAND PIERRON FIRE PROTECTION DISTRICT
PARCEL NO. 01-1-24-03-000-013.002

- TBM "A" - CHISLED "X" ON FIRE HYDRANT
STA. 98+10.82 68.9 LT
ELEV. 524.12
- CP #3 - IRON BAR WITH CAP
STA. 98+09.47 42.11 LT
N 753879.02 E 2443247.86

ex = 0.25'
K = 32
80.00' V.C.

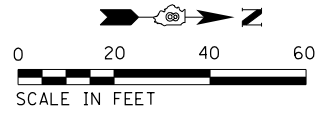


| | | |
|---------------------------|------------|-----------|
| USER NAME = rick.moore | DESIGNED - | REVISED - |
| PLOT SCALE = 40,000' / 1" | DRAWN - | REVISED - |
| PLOT DATE = 12/20/2018 | CHECKED - | REVISED - |
| | DATE - | REVISED - |

**STATE OF ILLINOIS
DEPARTMENT OF TRANSPORTATION**

| | |
|----------------------------------|---------------------|
| PLAN & PROFILE SHEETS | |
| SCALE: 1"=20' | SHEET 3 OF 4 SHEETS |
| STA. 96+00 | TO STA. 101+10 |

| | | | | |
|---------------------------|----------------|---------|--------------|-----------|
| F.A.U. RTE. | SECTION | COUNTY | TOTAL SHEETS | SHEET NO. |
| 8846 | 17-00070-00-PV | MADISON | 55 | 18 |
| CONTRACT NO. 97686 | | | | |
| ILLINOIS FED. AID PROJECT | | | | |

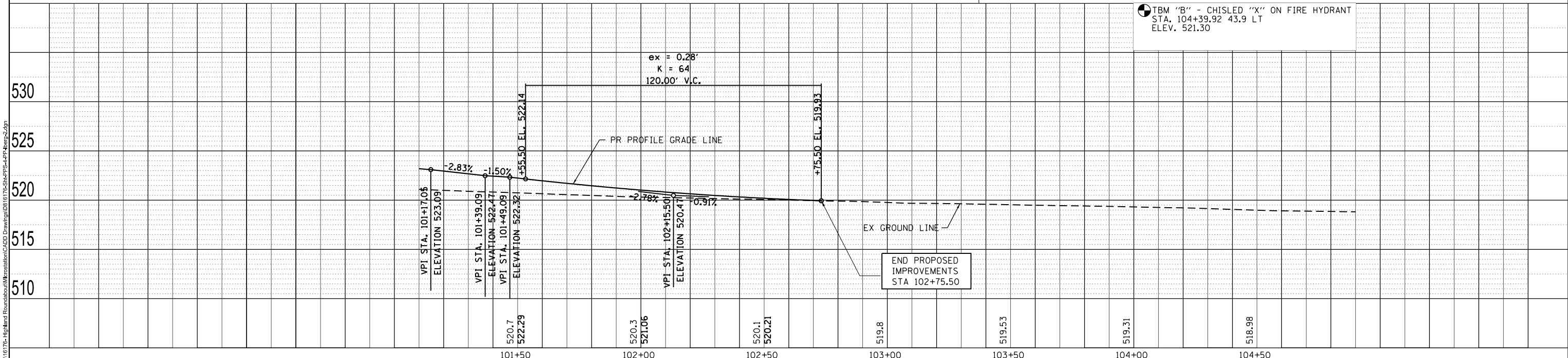
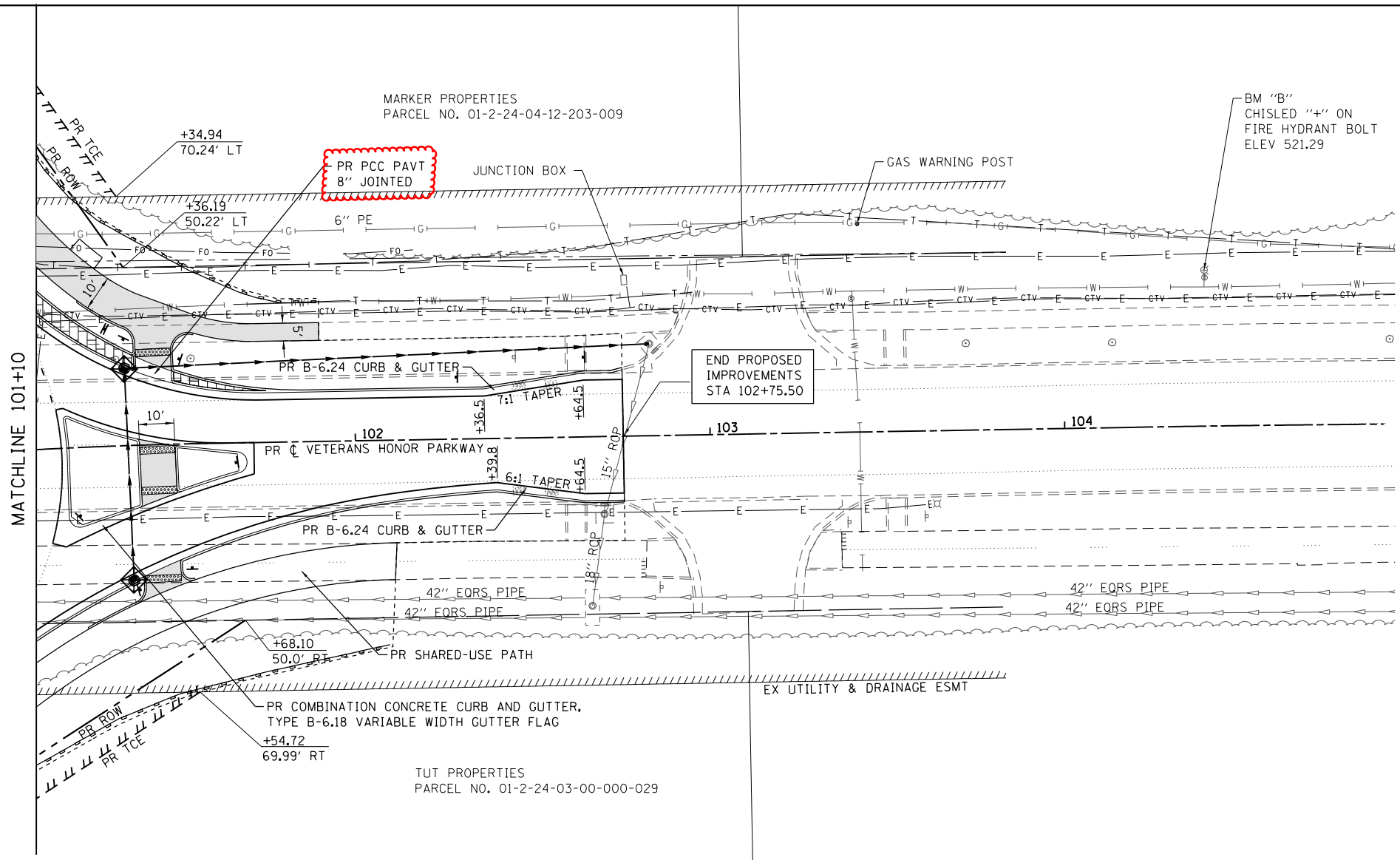


| | |
|----------|------|
| PLAN | DATE |
| BY | |
| REVIEWED | |
| PLOTTED | |
| ALIGNED | |
| CHECKED | |
| FILED | |
| NO. | |

| | |
|-----------|------|
| PROFILE | DATE |
| BY | |
| REVIEWED | |
| PLOTTED | |
| GRADES | |
| CHECKED | |
| STRUCTURE | |
| NOTATING | |
| CHKD | |
| NO. | |

PLAN SHEET LEGEND

- PROPOSED PCC SIDEWALK
- PROPOSED HMA PAVEMENT (FULL-DEPTH)
- PROPOSED HMA SURFACE COURSE
- TRUCK APRON
- CONSTRUCTION LIMITS
- ABOVE GRADE INLET FILTERS
- EROSION CONTROL BLANKET
- PERIMETER EROSION BARRIER



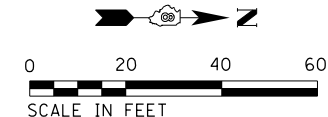
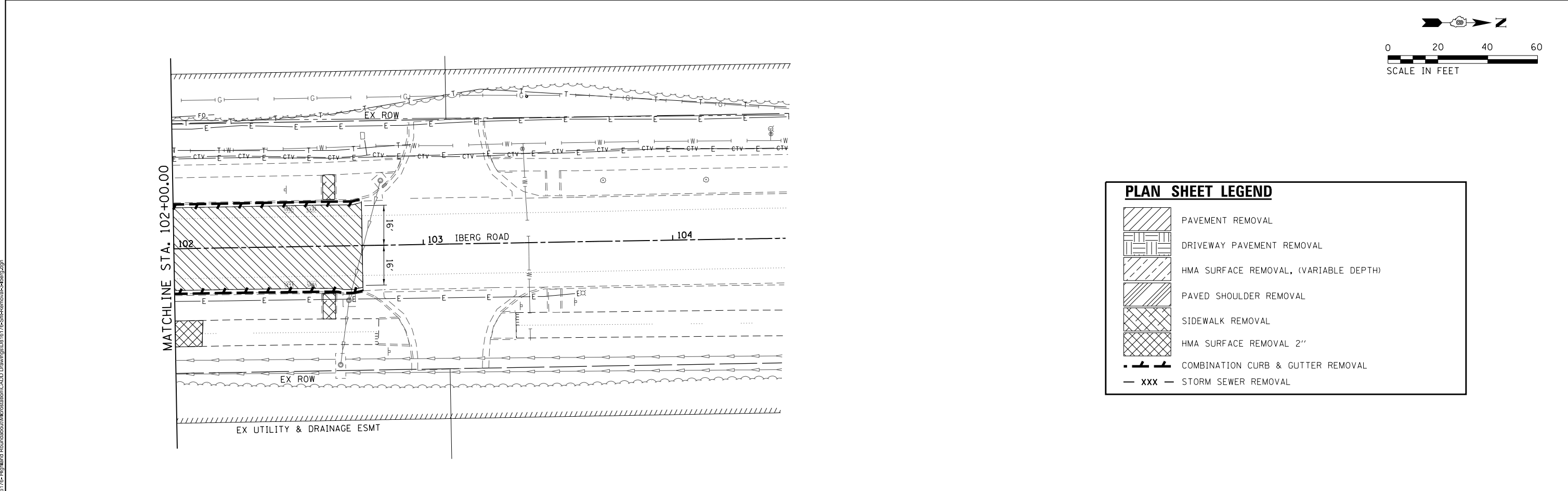
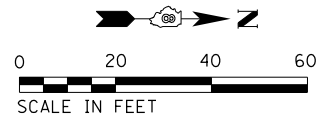
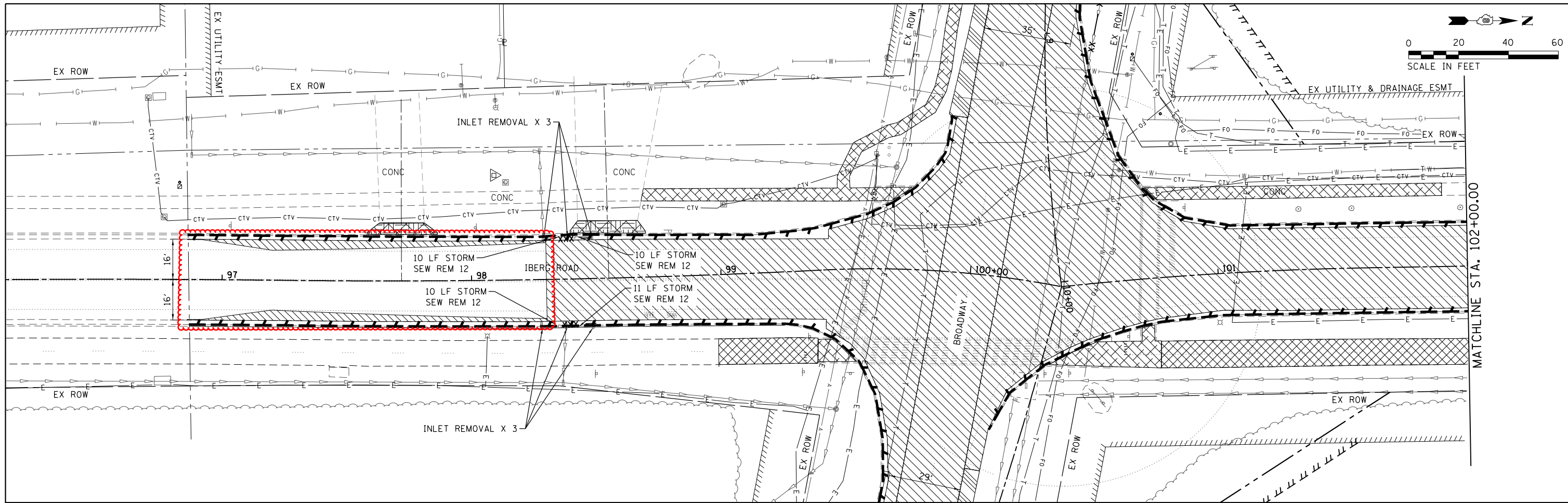
| | | | |
|---------------|----------------|------------|-----------|
| USER NAME = | nick.moore | DESIGNED - | REvised - |
| PLLOT SCALE = | 40,000' / 1" = | DRAWN - | REvised - |
| PLLOT DATE = | 12/20/2018 | CHECKED - | REvised - |
| | | DATE - | REvised - |

STATE OF ILLINOIS
DEPARTMENT OF TRANSPORTATION

PLAN & PROFILE SHEETS
SCALE: 1"=20' SHEET 4 OF 4 SHEETS STA. 101+10 TO STA. 104+90

| | | | | |
|---------------------------|----------------|---------|--------------|-----------|
| F.A.U. RTE. | SECTION | COUNTY | TOTAL SHEETS | SHEET NO. |
| 8846 | 17-00070-00-PV | MADISON | 55 | 19 |
| CONTRACT NO. 97686 | | | | |
| ILLINOIS FED. AID PROJECT | | | | |

MODEL: Default FILE NAME: R:\16 176 - Highland Roundabout\Information\CADD Drawings\0816176-ShrPPS-LP-Plan-2.dgn



| PLAN SHEET LEGEND | |
|-------------------|---------------------------------------|
| | PAVEMENT REMOVAL |
| | DRIVEWAY PAVEMENT REMOVAL |
| | HMA SURFACE REMOVAL, (VARIABLE DEPTH) |
| | PAVED SHOULDER REMOVAL |
| | SIDEWALK REMOVAL |
| | HMA SURFACE REMOVAL 2" |
| | COMBINATION CURB & GUTTER REMOVAL |
| | --- xxx --- STORM SEWER REMOVAL |

MODEL: D:\delin\...
 FILE NAME: ...
 ILLINOIS DESIGN FIRM LICENSE NO.: 184.001115



| | | |
|---------------------------|------------|-----------|
| USER NAME = nrick.moore | DESIGNED - | REVISED - |
| PLOT SCALE = 40,000' / 1" | DRAWN - | REVISED - |
| PLOT DATE = 12/20/2018 | CHECKED - | REVISED - |
| | DATE - | REVISED - |

**STATE OF ILLINOIS
DEPARTMENT OF TRANSPORTATION**

REMOVAL PLAN SHEETS

SCALE: 1"=20' SHEET 2 OF 2 SHEETS STA. TO STA.

| | | | | |
|---------------------------|----------------|---------|--------------|-----------|
| F.A.U RTE. | SECTION | COUNTY | TOTAL SHEETS | SHEET NO. |
| 8846 | 17-00070-00-PV | MADISON | 55 | 27 |
| CONTRACT NO. 97686 | | | | |
| ILLINOIS FED. AID PROJECT | | | | |