

CODE NO.	ITEM	UNIT	TOTAL QUANTITY	CONSTRUCTION CODE		
				ROADWAY 0005	SIGNALS 0021	SAFETY 0021
* +	81028220	UNDERGROUND CONDUIT, GALVANIZED STEEL, 3" DIA.	FOOT	44	44	
* +	81028240	UNDERGROUND CONDUIT, GALVANIZED STEEL, 4" DIA.	FOOT	138	138	
* +	81400100	HANDHOLE	EACH	2	2	
* +	85000200	MAINTENANCE OF EXISTING TRAFFIC SIGNAL INSTALLATION	EACH	2	2	
* +	85100100	PAINT EXISTING TRAFFIC SIGNAL EQUIPMENT	EACH	1	1 Δ	
* +	85100500	PAINT NEW TRAFFIC SIGNAL POST	EACH	2	2	
* +	85100701	PAINT NEW MAST ARM AND POLE, 40 FOOT AND OVER	EACH	1	1	
* +	87301215	ELECTRIC CABLE IN CONDUIT, SIGNAL NO. 14 2C	FOOT	496	496	
* +	87301225	ELECTRIC CABLE IN CONDUIT, SIGNAL NO. 14 3C	FOOT	801	801	
* +	87301245	ELECTRIC CABLE IN CONDUIT, SIGNAL NO. 14 5C	FOOT	224	224	
* +	87301255	ELECTRIC CABLE IN CONDUIT, SIGNAL NO. 14 7C	FOOT	799	799	
* +	87301305	ELECTRIC CABLE IN CONDUIT, LEAD-IN, NO. 14 1 PAIR	FOOT	520	520	
* +	87301900	ELECTRIC CABLE IN CONDUIT, EQUIPMENT GROUNDING CONDUCTOR, NO. 6 1C	FOOT	478	478	
* +	87502500	TRAFFIC SIGNAL POST, GALVANIZED STEEL 16 FT.	EACH	2	2	
* +	87700290	STEEL MAST ARM ASSEMBLY AND POLE, 50 FT.	EACH	1	1	
* +	87800100	CONCRETE FOUNDATION, TYPE A	FOOT	12	12	
* +	87800415	CONCRETE FOUNDATION, TYPE E 36-INCH DIAMETER	FOOT	15	15	
* +	88030020	SIGNAL HEAD, LED, 1-FACE, 3-SECTION, MAST-ARM MOUNTED	EACH	1	1	
* +	88030100	SIGNAL HEAD, LED, 1-FACE, 5-SECTION, BRACKET MOUNTED	EACH	1	1	
* +	88030110	SIGNAL HEAD, LED, 1-FACE, 5-SECTION, MAST-ARM MOUNTED	EACH	2	2	
* +	88030220	SIGNAL HEAD, LED, 2-FACE, 5-SECTION, BRACKET MOUNTED	EACH	1	1	
* +	88102717	PEDESTRIAN SIGNAL HEAD, LED, 1-FACE, BRACKET MOUNTED WITH COUNTDOWN	EACH	6	6	
* +	88102747	PEDESTRIAN SIGNAL HEAD, LED, 2-FACE, BRACKET MOUNTED WITH COUNTDOWN	EACH	1	1	
* +	88200410	TRAFFIC SIGNAL BACKPLATE, LOUVERED, FORMED PLASTIC	EACH	3	3	
* +	88500100	INDUCTIVE LOOP DETECTOR	EACH	1	1	
* +	88600100	DETECTOR LOOP, TYPE I	FOOT	316	316	
* +	88600600	DETECTOR LOOP REPLACEMENT	FOOT	505	505	
* +	88700200	LIGHT DETECTOR	EACH	4	4	
* +	88700300	LIGHT DETECTOR AMPLIFIER	EACH	2	2	
* +	88800100	PEDESTRIAN PUSH-BUTTON	EACH	8	8	
* +	89502210	MODIFY EXISTING CONTROLLER CABINET	EACH	2	2	
+	89502300	REMOVE ELECTRIC CABLE FROM CONDUIT	FOOT	143	143	
+	89502350	REMOVE AND REINSTALL ELECTRIC CABLE FROM CONDUIT	FOOT	453	453	
* +	89502375	REMOVE EXISTING TRAFFIC SIGNAL EQUIPMENT	EACH	1	1	
+	89502380	REMOVE EXISTING HANDHOLE	EACH	2	2	
+	89502385	REMOVE EXISTING CONCRETE FOUNDATION	EACH	3	3	
*	X0322463	CONNECTION TO EXISTING SEWER	EACH	9	9	
* +	X0324085	EMERGENCY VEHICLE PRIORITY SYSTEM LINE SENSOR CABLE, NO. 20 3/C	FOOT	232	232	
*	X0326806	WASHOUT BASIN	L SUM	1	1	
* +	X0326899	SOLAR-POWERED FLASHING BEACON ASSEMBLY (COMPLETE)	EACH	1	1	

CODE NO.	ITEM	UNIT	TOTAL QUANTITY	CONSTRUCTION CODE		
				ROADWAY 0005	SIGNALS 0021	SAFETY 0021
*	X1700034	FORM LINER TEXTURED SURFACE	SO FT	233	233	
*	X2130010	EXPLORATION TRENCH, SPECIAL	FOOT	100	100	
*	X4021000	TEMPORARY ACCESS (PRIVATE ENTRANCE)	EACH	2	2	
*	X4022000	TEMPORARY ACCESS (COMMERCIAL ENTRANCE)	EACH	2	2	
*	X6026624	VALVE BOXES TO BE ADJUSTED (SPECIAL)	EACH	2	2	
*	X6030310	FRAMES AND LIDS TO BE ADJUSTED (SPECIAL)	EACH	16	16	
*	X6640200	TEMPORARY CHAIN LINK FENCE	FOOT	390	390	
* +	X7240505	RELOCATE SIGN PANEL AND POST	EACH	4	4	
* +	X7830060	GROOVING FOR RECESSED PAVEMENT MARKING, LETTERS AND SYMBOLS	SO FT	1,040		1,040
* +	X7830070	GROOVING FOR RECESSED PAVEMENT MARKING 5"	FOOT	23,407		23,407
* +	X7830074	GROOVING FOR RECESSED PAVEMENT MARKING 7"	FOOT	5,202		5,202
* +	X7830078	GROOVING FOR RECESSED PAVEMENT MARKING 13"	FOOT	2,239		2,239
* +	X7830090	GROOVING FOR RECESSED PAVEMENT MARKING 25"	FOOT	433		433
* +	X8100105	CONDUIT SPLICE	EACH	1	1	
* +	X8140115	HANDHOLE TO BE ADJUSTED	EACH	1	1	
* +	X8440110	RELOCATE EXISTING LIGHT POLE WITH LUMINAIRE	EACH	1	1	
* +	X8620200	UNINTERRUPTABLE POWER SUPPLY, SPECIAL	EACH	2	2	
* +	X8803084	SIGNAL HEAD, LED, 1-FACE, 3-SECTION, MAST ARM MOUNTED, RETROFIT	EACH	6	6	
* +	X8803088	SIGNAL HEAD, LED, 1-FACE, 5-SECTION, MAST ARM MOUNTED, RETROFIT	EACH	7	7	
* +	X8803210	SIGNAL HEAD, LED, 1-FACE, 5-SECTION, BRACKET MOUNTED, RETROFIT	EACH	6	6	
* +	Z0013798	CONSTRUCTION LAYOUT	L SUM	1	1	
	Z0022800	FENCE REMOVAL	FOOT	425	425	
*	Z0030850	TEMPORARY INFORMATION SIGNING	SO FT	78.0	78.0	
*	Z0033700	LONGITUDINAL JOINT SEALANT	FOOT	19,390	19,390	
*	Z0046304	PIPE UNDERDRAINS FOR STRUCTURES 4"	FOOT	90	90	
* +	Z0077900	WOOD POST AND RAIL FENCE	FOOT	420	420	
* +	A2000192	TREE, ACER X FREEMANIT AUTUMN FANTASY (AUTUMN FANTASY FREEMAN MAPLE), 2-1/2" CALIPER, BALLED AND BRUSHAPPED	EACH	5	5	
* +	A2006520	TREE, QUERCUS BICOLOR (SWAMP WHITE OAK), 2-1/2" CALIPER, BALLED AND BRUSHAPPED	EACH	5	5	
* +	A2008470	TREE, QUERCUS AMERICANA PRINCETON (PRINCETON AMERICAN ELM), 2-1/2" CALIPER, BALLED AND BRUSHAPPED	EACH	5	5	

- * SPECIAL PROVISION
- + SPECIALTY ITEM
- X CONSTRUCTION TYPE CODE 0042
- Δ 100% LOCAL FUNDED

COMPANY NAME: HRGreen.com
 PROJECT CONTACT: HRGreen.com
 CLIENT: HRGreen.com
 DATE PLOTTED: 1/4/2019 7:02:12 AM
 FILE NAME: 257-shr-sum_01.dgn
 PLOT DRIVER: IL_per_dwg.plt
 PEN TABLE: pen.tbl

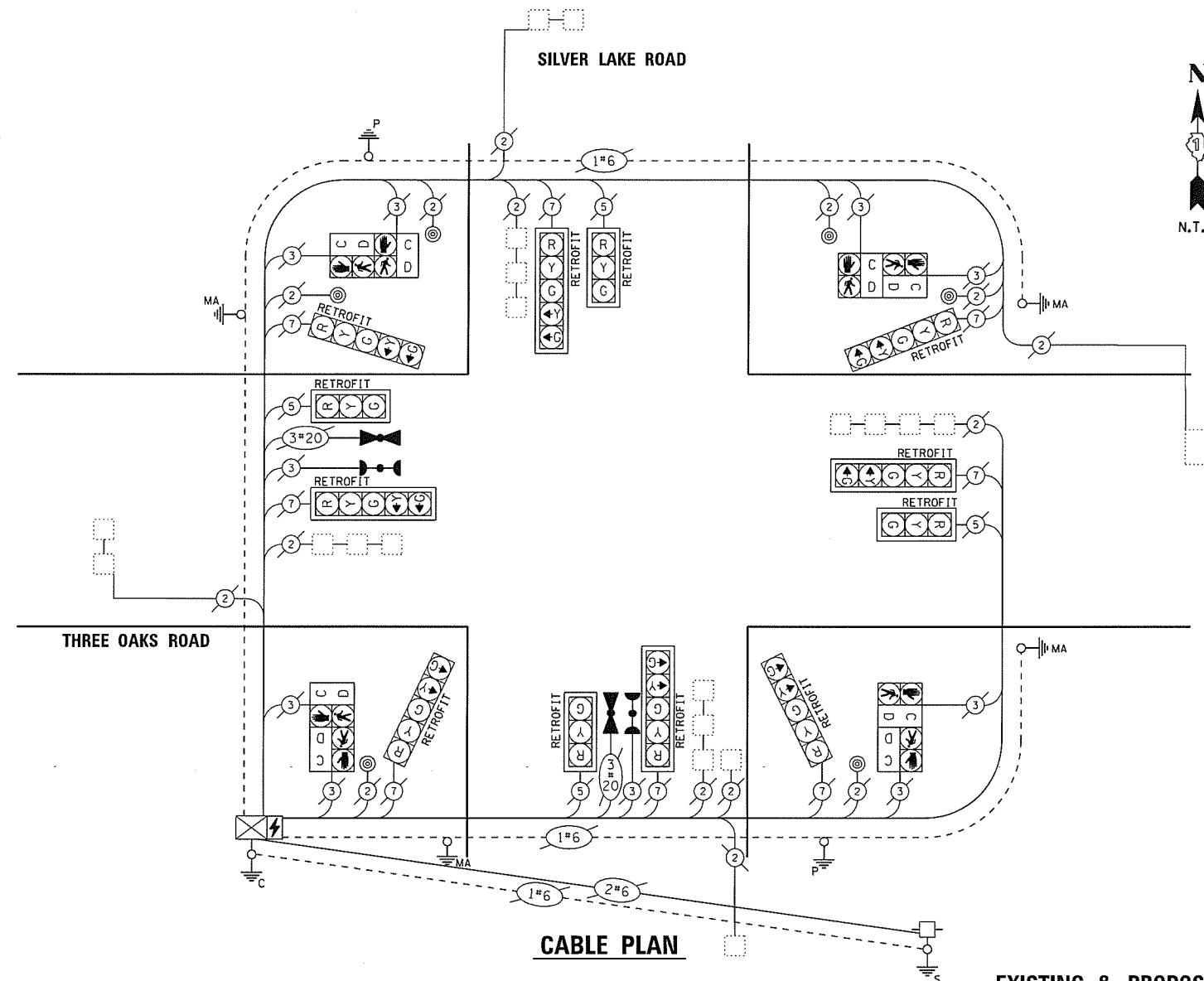


USER NAME = jstrzal	DESIGNED - JJS	REVISED - 12/12/18
FILE NAME = 257-shr-sum_01.dgn	DRAWN - DMS	REVISED -
PLOT SCALE = N.T.S.	CHECKED - AC	REVISED -
PLOT DATE = 1/4/2019	DATE - 08/10/18	REVISED -

STATE OF ILLINOIS
DEPARTMENT OF TRANSPORTATION

SUMMARY OF QUANTITIES

SCALE: N.T.S.	SHEET NO. 2 OF 2 SHEETS	STA. TO STA.	F.A.U. RTE. 4051	SECTION 15-00065-00-RS	COUNTY MCHENRY	TOTAL SHEETS 72	SHEET NO. 5
FED. ROAD DIST. NO. ILLINOIS FED. AID PROJECT						CONTRACT NO. 61F42	

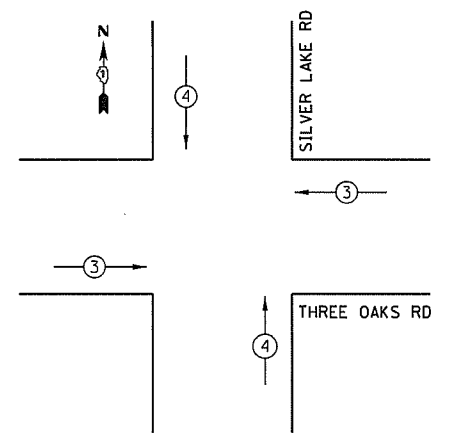


SCHEDULE OF QUANTITIES

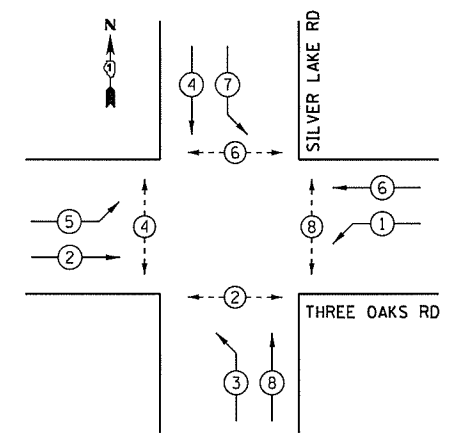
MAINTENANCE OF EXISTING TRAFFIC SIGNAL INSTALLATION	EACH	1
LIGHT DETECTOR	EACH	2
MODIFY EXISTING CONTROLLER CABINET	EACH	1
UNINTERRUPTABLE POWER SUPPLY, SPECIAL	EACH	1
SIGNAL HEAD, LED, 1-FACE, 3-SECTION, MAST ARM MOUNTED, RETROFIT	EACH	4
SIGNAL HEAD, LED, 1-FACE, 5-SECTION, MAST ARM MOUNTED, RETROFIT	EACH	4
SIGNAL HEAD, LED, 1-FACE, 5-SECTION, BRACKET MOUNTED, RETROFIT	EACH	4

CABLE PLAN

EXISTING & PROPOSED EMERGENCY VEHICLE PREEMPTION SEQUENCE



EXISTING & PROPOSED CONTROLLER SEQUENCE



LEGEND:
 ← ⊙ → DUAL ENTRY PHASE
 ⊙ ← ⊙ → OVERLAP
 ← ⊙ → PEDESTRIAN PHASE
 • NUMBER REFERRING TO ASSOCIATED PHASE

TRAFFIC SIGNAL ELECTRICAL SERVICE REQUIREMENTS

TYPE	NO. OF LAMPS	LED WATTAGE	% OPERATION	TOTAL WATTAGE
SIGNAL (RED)	12	11	50	66.0
(YELLOW)	12	20	5	12.0
(GREEN)	12	12	45	64.8
PERMISSIVE ARROW	16	10	10	16.0
PED. SIGNAL	8	20	100	160.0
CONTROLLER	1	100	100	100.0
UPS	1	25	100	25.0
VIDEO SYSTEM	-	150	100	-
BLANK-OUT SIGN	-	25	5	-
FLASHER	-	-	50	-
STREET NAME SIGN	-	120	50	-
LUMINAIRE	-	-	-	-
TOTAL =				443.8

ENERGY COSTS TO:
 VILLAGE OF CARY
 655 VILLAGE HALL DRIVE
 CARY, IL 60013
 ENERGY SUPPLY: CONTACT: MICHAEL PERRON
 PHONE: (815) 477-5204
 COMPANY: COMMONWEALTH EDISON
 ACCOUNT NUMBER: ---

COMPANY NAME: HRGreen.com
 PROJECT CONTACT: #PROJECT_CONTACTS
 CLIENTS: 1/4/2019 7:06:00 AM
 DATE PLOTTED: 257-shr-sigcab_01.dgn
 FILE NAME: C:\pdr\dwg\refrg
 PLOT: 1/4/2019
 PLOT DATE: 1/4/2019



USER NAME = jstrzal	DESIGNED - JJS	REVISED - 12/12/18
FILE NAME = 257-shr-sigcab_01.dgn	DRAWN - DMS	REVISED -
PLOT SCALE = 1" = 20'	CHECKED - AC	REVISED -
PLOT DATE = 1/4/2019	DATE - 08/10/18	REVISED -

STATE OF ILLINOIS DEPARTMENT OF TRANSPORTATION

CABLE PLAN, PHASE DESIGNATION DIAGRAM, EMERGENCY VEHICLE PREEMPTION SEQUENCE, AND SCHEDULE OF QUANTITIES
 THREE OAKS ROAD AT SILVER LAKE ROAD
 SCALE: 1" = 20' SHEET NO. 2 OF 6 SHEETS STA. TO STA.

F.A.U. RTE.	SECTION	COUNTY	TOTAL SHEETS	SHEET NO.
4051	15-00065-00-RS	MCHENRY	72	31
FED. ROAD DIST. NO.			ILLINOIS FED. AID PROJECT	CONTRACT NO. 61F42