

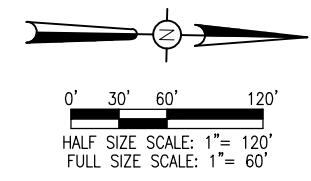
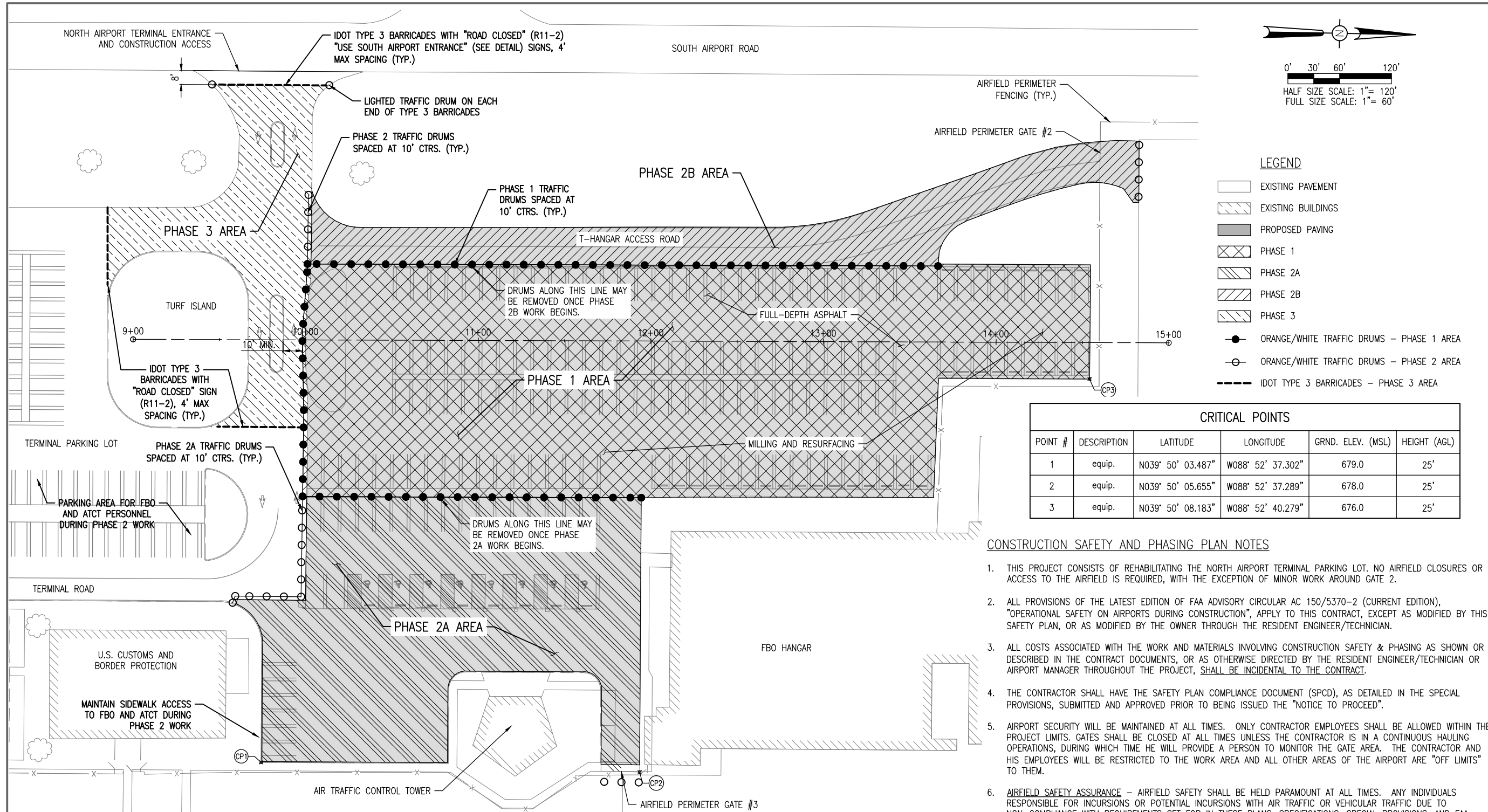








Decatur Park District  
Decatur Airport  
910 South Airport Road  
Decatur, IL 62521



**LEGEND**

- EXISTING PAVEMENT
- EXISTING BUILDINGS
- PROPOSED PAVING
- PHASE 1
- PHASE 2A
- PHASE 2B
- PHASE 3
- ORANGE/WHITE TRAFFIC DRUMS - PHASE 1 AREA
- ORANGE/WHITE TRAFFIC DRUMS - PHASE 2 AREA
- IDOT TYPE 3 BARRICADES - PHASE 3 AREA

**CRITICAL POINTS**

POINT #	DESCRIPTION	LATITUDE	LONGITUDE	GRND. ELEV. (MSL)	HEIGHT (AGL)
1	equip.	N039° 50' 03.487"	W088° 52' 37.302"	679.0	25'
2	equip.	N039° 50' 05.655"	W088° 52' 37.289"	678.0	25'
3	equip.	N039° 50' 08.183"	W088° 52' 40.279"	676.0	25'

**CONSTRUCTION SAFETY AND PHASING PLAN NOTES**

- THIS PROJECT CONSISTS OF REHABILITATING THE NORTH AIRPORT TERMINAL PARKING LOT. NO AIRFIELD CLOSURES OR ACCESS TO THE AIRFIELD IS REQUIRED, WITH THE EXCEPTION OF MINOR WORK AROUND GATE 2.
- ALL PROVISIONS OF THE LATEST EDITION OF FAA ADVISORY CIRCULAR AC 150/5370-2 (CURRENT EDITION), "OPERATIONAL SAFETY ON AIRPORTS DURING CONSTRUCTION", APPLY TO THIS CONTRACT, EXCEPT AS MODIFIED BY THIS SAFETY PLAN, OR AS MODIFIED BY THE OWNER THROUGH THE RESIDENT ENGINEER/TECHNICIAN.
- ALL COSTS ASSOCIATED WITH THE WORK AND MATERIALS INVOLVING CONSTRUCTION SAFETY & PHASING AS SHOWN OR DESCRIBED IN THE CONTRACT DOCUMENTS, OR AS OTHERWISE DIRECTED BY THE RESIDENT ENGINEER/TECHNICIAN OR AIRPORT MANAGER THROUGHOUT THE PROJECT, SHALL BE INCIDENTAL TO THE CONTRACT.
- THE CONTRACTOR SHALL HAVE THE SAFETY PLAN COMPLIANCE DOCUMENT (SPCD), AS DETAILED IN THE SPECIAL PROVISIONS, SUBMITTED AND APPROVED PRIOR TO BEING ISSUED THE "NOTICE TO PROCEED".
- AIRPORT SECURITY WILL BE MAINTAINED AT ALL TIMES. ONLY CONTRACTOR EMPLOYEES SHALL BE ALLOWED WITHIN THE PROJECT LIMITS. GATES SHALL BE CLOSED AT ALL TIMES UNLESS THE CONTRACTOR IS IN A CONTINUOUS HAULING OPERATIONS, DURING WHICH TIME HE WILL PROVIDE A PERSON TO MONITOR THE GATE AREA. THE CONTRACTOR AND HIS EMPLOYEES WILL BE RESTRICTED TO THE WORK AREA AND ALL OTHER AREAS OF THE AIRPORT ARE "OFF LIMITS" TO THEM.
- AIRFIELD SAFETY ASSURANCE** - AIRFIELD SAFETY SHALL BE HELD PARAMOUNT AT ALL TIMES. ANY INDIVIDUALS RESPONSIBLE FOR INCURSIONS OR POTENTIAL INCURSIONS WITH AIR TRAFFIC OR VEHICULAR TRAFFIC DUE TO NON-COMPLIANCE WITH REQUIREMENTS SET FOR IN THESE PLANS, SPECIFICATIONS, SPECIAL PROVISIONS, AND FAA ADVISORY CIRCULAR 150/5370-2 (CURRENT EDITION) WILL BE SUBJECT TO AN IMMEDIATE SUSPENSION OF DRIVING PRIVILEGES ON THE AIRPORT OR A COMPLETE RESTRICTION OF ACCESS TO THE AIRFIELD ALTOGETHER. THE AIRPORT MANAGER OR RESIDENT ENGINEER/TECHNICIAN MAY STOP THE WORK AT ANY TIME THEY BELIEVE AIRFIELD SAFETY IS BEING COMPROMISED.
- THE CONSTRUCTION ACCESS AND HAUL ROUTE AREA SHALL BE CONSTANTLY MONITORED AND KEPT FREE OF DEBRIS. CONTRACTOR SHALL KEEP A SWEEPER ONSITE AND AVAILABLE FOR USE AT ALL TIMES TO MAINTAIN ENTRANCE ROAD PAVEMENTS. THE CONTRACTOR SHALL USE A PRESSURE WASHER OR OTHER MEANS TO THOROUGHLY CLEAN THE CONCRETE HAUL ROUTE AREA AT THE CONCLUSION OF THE PROJECT.
- WORK AREAS SHALL BE DELINEATED BY ORANGE/WHITE PLASTIC DRUMS PER IDOT STANDARD 701901. DRUMS SHALL BE LIGHTED, PLACED AT THE LOCATIONS AND INTERVALS SHOWN, AND CONNECTED WITH YELLOW CAUTION TAPE.
- THE CONTRACTOR SHALL PROVIDE THE AIRPORT MANAGER AND RESIDENT ENGINEER/TECHNICIAN WITH CONTACT INFORMATION FOR A PERSON ON CALL 24 HOURS A DAY FOR EMERGENCY MAINTENANCE OF BARRICADES AND HAZARD LIGHTING.
- ALL WORK PERFORMED SHALL BE DONE IN AN ORDERLY AND EFFECTIVE MANNER TO MINIMIZE DISRUPTION TO AIRPORT OPERATIONS.
- NO CONSTRUCTION EQUIPMENT GREATER THAN 25' TALL WILL BE PERMITTED ON THE AIRPORT WITHOUT THE APPROVAL OF THE AIRPORT MANAGER AND AIRSPACE APPROVAL BY THE FAA.

**PHASE 1 NOTES**

- THE PHASE 1 AREA COVERS THE CENTER PORTION OF THE NORTH AIRPORT TERMINAL PARKING LOT.
- ITEMS OF WORK INCLUDE FULL-DEPTH ASPHALT PAVEMENT REMOVAL AND REPLACEMENT, PAVING OF A TURF ISLAND, ASPHALT PATCHING, MILLING AND RESURFACING, MARKING, SODDING. PLACEMENT OF THE ASPHALT SURFACE LIFT, MARKING, AND SODDING MAY BE COMPLETED CONCURRENT WITH PHASE 2 WORK.
- THIS AREA SHALL REMAIN CLOSED FOR THE PROJECT DURATION.
- NO WORK MAY OCCUR OUTSIDE THIS AREA UNTIL THE ASPHALT BASE COURSE HAS BEEN PLACED IN THE FULL-DEPTH AREA, AND THE MILLING HAS BEEN COMPLETED IN THE RESURFACING AREA.

**PHASE 2 NOTES**

- THE PHASE 2A AREA COVERS THE ACCESS ROAD TO THE T-HANGARS. THE PHASE 2B AREA COVERS THE PARKING LOT SURROUNDING THE AIR TRAFFIC CONTROL TOWER.
- ITEMS OF WORK INCLUDE ASPHALT PATCHING, MILLING AND RESURFACING, PAVEMENT MARKING, SODDING.
- NO CLOSURE OR WORK MAY BEGIN IN THE PHASE 2A AREA UNTIL THE ASPHALT BASE COURSE AND MILLING HAS BEEN COMPLETED IN THE PHASE 1 AREA.
- NO CLOSURE OR WORK MAY BEGIN IN THE PHASE 2B AREA UNTIL THE MILLING HAS BEEN COMPLETED IN THE PHASE 2A AREA.
- THE CONTRACTOR SHALL NOTIFY THE AIRPORT DIRECTOR AND RESIDENT ENGINEER/TECHNICIAN A MINIMUM OF 5 DAYS PRIOR TO THE DESIRED CLOSURE DATE TO ALLOW FOR COORDINATION WITH THE AIRPORT TENANTS AND THE AIR TRAFFIC CONTROL TOWER.

**PHASE 3 NOTES**

- THE PHASE 3 AREA COVERS THE NORTH TERMINAL ENTRANCE AREA AS ACCESSED FROM SOUTH AIRPORT ROAD. THE WORK MAY NOT ENCROACH ON OR IMPACT TRAFFIC ON SOUTH AIRPORT ROAD.
- ITEMS OF WORK INCLUDE CONCRETE PATCHING OF ISOLATED PAVEMENT AREAS NEAR THE ENTRANCE.
- THIS WORK SHALL BE COMPLETED CONCURRENTLY WITH THE PHASE 2B WORK TO MINIMIZE DISRUPTION TO THE AIRPORT.
- THE CONTRACTOR SHALL HAVE 3 DAYS OF CLOSURE TO COMPLETE THE PATCHING AND REOPEN THE ENTRANCE TO TRAFFIC.
- THE CONTRACTOR SHALL NOTIFY THE AIRPORT DIRECTOR AND RESIDENT ENGINEER/TECHNICIAN A MINIMUM OF 5 DAYS PRIOR TO THE DESIRED ENTRANCE CLOSURE DATE TO ALLOW FOR COORDINATION WITH AIRPORT TENANTS AND DECATUR MASS TRANSIT.

I:\18\OBS\18A0002\18A0002\CAD\AIRPORT\SHSHEET\101-SFY.DWG  
NOV 28, 2016 11:15 AM SCHWIE01286

**REHABILITATE NORTH AIRPORT TERMINAL AUTOMOBILE PARKING AREA**

IDA No: DEC-4623

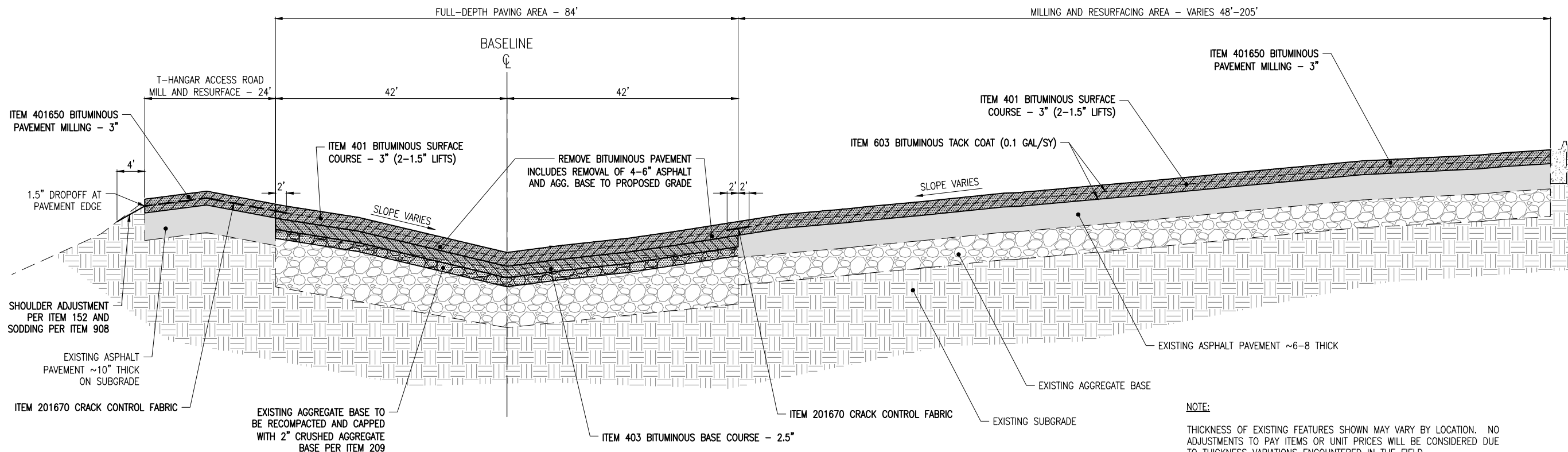
Contract No. DE080

NO.	DATE	DESCRIPTION		
		DES	DWN	REV

ISSUE: 11/16/2018  
PROJECT NO: 18A0002  
CAD FILE: C-101-SFY.DWG  
DESIGN BY: KBS  
DRAWN BY: KBS  
REVIEWED BY: MJD 10/18/18

SHEET TITLE

**CONSTRUCTION SAFETY AND PHASING PLAN**

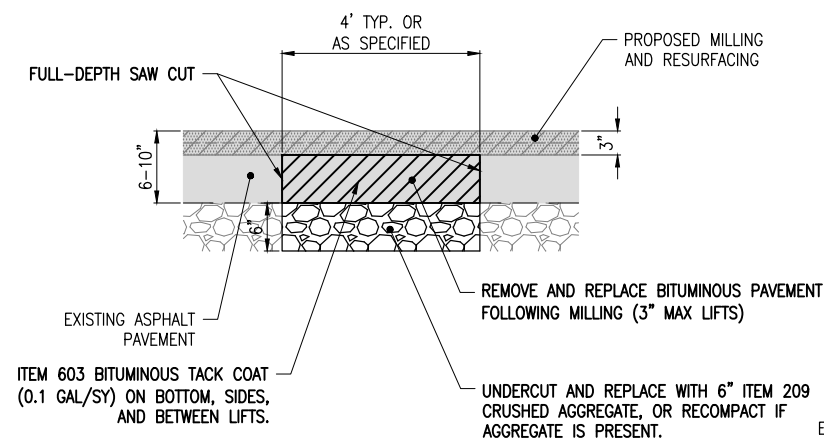


**NOTE:**  
THICKNESS OF EXISTING FEATURES SHOWN MAY VARY BY LOCATION. NO ADJUSTMENTS TO PAY ITEMS OR UNIT PRICES WILL BE CONSIDERED DUE TO THICKNESS VARIATIONS ENCOUNTERED IN THE FIELD.

**TYPICAL SECTION A-A**  
NOT TO SCALE

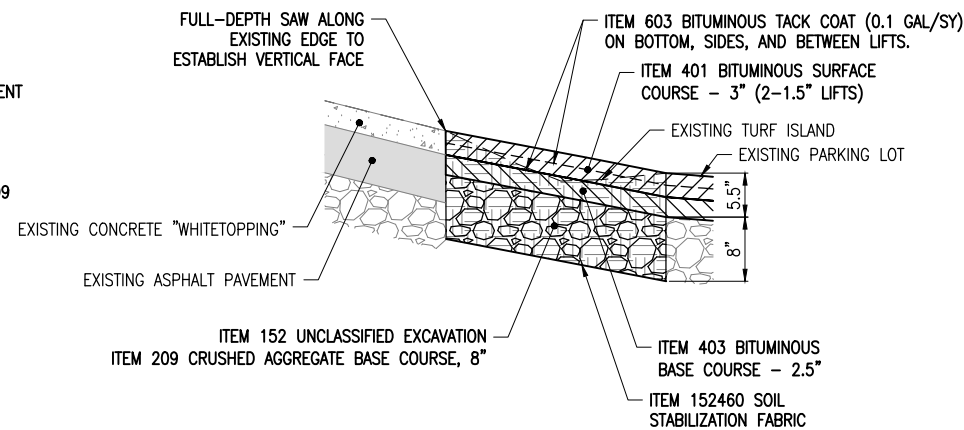
HOT-MIX ASPHALT MIXTURE REQUIREMENTS		
ITEM	MIXTURE TYPE	AIR VOIDS (%) @ Ndes
ITEM 401 BIT. SURF. CSE.-METHOD I, SUPERPAVE	POLYMERIZED HMA SURFACE COURSE, MIX "C", N50 (IL 9.5 MM), - 3" (2 LIFTS)	4% @ 50 GYR
ITEM 403 BIT. BASE CSE.-METHOD I, SUPERPAVE	HMA BASE COURSE, IL-19.0, N50 - 2 1/2"	4% @ 50 GYR

1. THE UNIT WEIGHT USED TO CALCULATE ALL HMA SURFACE QUANTITIES IS 112 LBS/SQ YD/IN. (0.056 TONS/SQ YD/IN.)
2. THE "AC TYPE" FOR POLYMERIZED HMA MIXES SHALL BE "SBS/SBR PG 76-22" AND "PG 64-22" FOR NON POLYMERIZED HMA.
3. SECTION 406 OF THE "STANDARD SPECIFICATIONS FOR ROAD AND BRIDGE CONSTRUCTION," ADOPTED APRIL 1, 2016 SHALL GOVERN ALL MATERIAL REQUIREMENTS FOR THIS ITEM.



**REMOVE AND REPLACE BITUMINOUS PAVEMENT DETAIL**  
NOT TO SCALE

- NOTE:**
1. CRUSHED AGGREGATE BASE, IF USED, SHALL BE PAID FOR FOR UNDER PAY ITEM AR209510 "CRUSHED AGGREGATE BASE COURSE" - PER TON.
  2. ALL OTHER WORK AND MATERIALS SHOWN SHALL BE INCLUDED IN AND PAID FOR UNDER PAY ITEM AR401910 "REMOVE AND REPLACE BIT. PAVEMENT" - PER SQUARE YARD.



**TYPICAL SECTION B-B**  
NOT TO SCALE

**REHABILITATE NORTH TERMINAL  
AUTOMOBILE PARKING  
AREA**

IDA No: DEC-4623

Contract No. DE080

NO.	DATE	DESCRIPTION		
		DES	DWN	REV

ISSUE: 11/16/2018  
PROJECT NO: 18A0002  
CAD FILE: C-301-TYP.DWG  
DESIGN BY: KBS  
DRAWN BY: KBS  
REVIEWED BY:

SHEET TITLE

**TYPICAL SECTIONS**



Decatur Park District  
Decatur Airport  
910 South Airport Road  
Decatur, IL 62521

**REHABILITATE NORTH  
TERMINAL  
AUTOMOBILE PARKING  
AREA**

IDA No: DEC-4623

Contract No. DE080

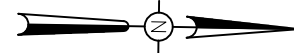
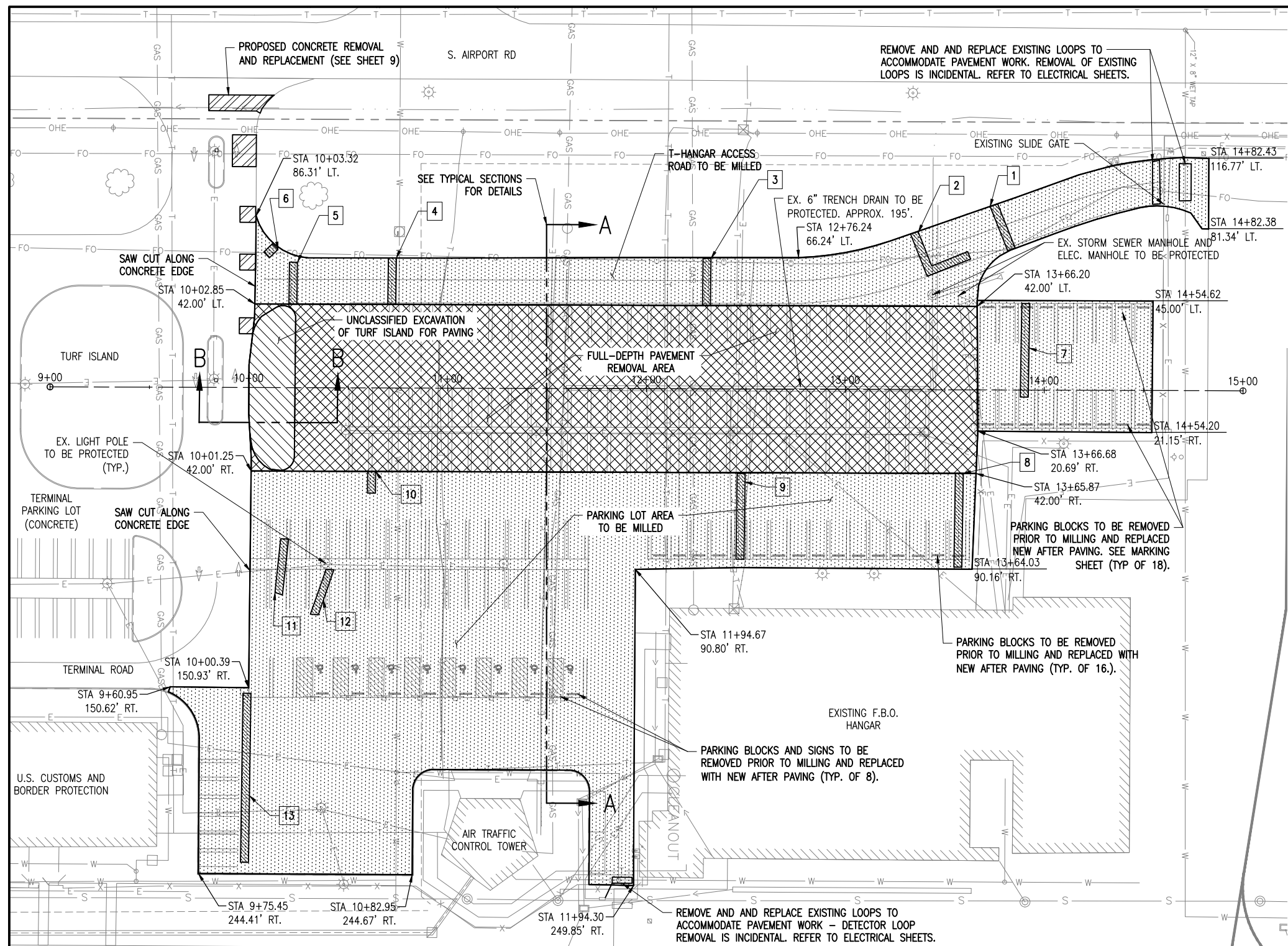
NO.	DATE	DESCRIPTION

ISSUE: 11/16/2018

PROJECT NO: 18A0002  
CAD FILE: C-102-PRP.DWG  
DESIGN BY: MJD  
DRAWN BY: MJD  
REVIEWED BY: KBS 10/18/18

SHEET TITLE

**PAVEMENT  
PREPARATION PLAN**



0' 15' 30' 60'  
HALF SIZE SCALE: 1" = 60'  
FULL SIZE SCALE: 1" = 30'

**LEGEND**

- AR401650 BITUMINOUS PAVEMENT MILLING
- AR152410 UNCLASSIFIED EXCAVATION
- AR401900 REMOVE BITUMINOUS PAVEMENT
- AR501910 REMOVE AND REPLACE PCC PAVEMENT
- AR401910 REMOVE AND REPLACE BITUMINOUS PAVEMENT
- EXISTING FENCE
- EXISTING STORM SEWER
- EXISTING WATERLINE
- EXISTING SANITARY
- EXISTING TELEPHONE
- EXISTING FIBER OPTIC
- EXISTING GAS
- EXISTING ELECTRIC
- EXISTING STORM INLET/MAHOLE
- EXISTING LIGHT POLE/POLE-MOUNTED LIGHT

PATCHING SCHEDULE		
CRACK NO.	DIMENSIONS (WIDTH X LENGTH)	TOTAL (S. Y.)
1	4' X 24'	11
2	4' X 42'	19
3	4' X 24'	11
4	4' X 24'	11
5	4' X 21'	9
6	4' X 6'	3
7	4' X 47'	21
8	4' X 47'	21
9	4' X 43'	19
10	4' X 11'	5
11	4' X 28'	12
12	4' X 24'	11
13	4' X 85'	38
SUPP.		50
TOTAL		239

SIGN AND PARKING BLOCK REMOVAL QUANTITIES	
DESCRIPTION	NO. REQUIRED
PARKING BLOCKS	42
R7-8 SIGN WITH R7-1101 PLAQUE & POST	8

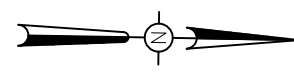
**PAVEMENT MILLING & REMOVAL NOTES**

- IF A VERTICAL FACE IS NOT OBTAINED FROM THE MILLING OPERATIONS, OR IF THE VERTICAL FACE IS DAMAGED PRIOR TO PAVING, THE EXISTING PAVEMENT WILL BE SAW-CUT IN ORDER TO ACHIEVE A VERTICAL FACE FOR PAVING AGAINST. SAWING WILL BE CONSIDERED AS AN INCIDENTAL ITEM TO THE PROPOSED PAVEMENT MILLING AND NO ADDITIONAL COMPENSATION WILL BE ALLOWED.
- ALL MILLED MATERIAL WILL BE DISPOSED OF OFF THE AIRPORT SITE.
- ANY ADJACENT PAVEMENT DAMAGED BY THE MILLING OPERATIONS WILL BE REPAIRED AT THE CONTRACTOR'S OWN EXPENSE.
- FOR FULL DEPTH HMA REMOVAL THE UNDERLYING COURSE SHALL BE RECOMPACTED, PROOF-ROLLED AND ACCEPTED BY THE RESIDENT ENGINEER/TECHNICIAN BEFORE PLACING AND SPREADING OPERATIONS BEGIN.
- PATCHING AND CRACK SEALING AREAS WILL BE CONFIRMED AND LAID OUT BY THE RESIDENT ENGINEER/TECHNICIAN FOLLOWING PAVEMENT MILLING.
- PARKING BLOCK REMOVAL PAID UNDER AR910415 - REMOVE PARKING BLOCK.
- SIGN REMOVAL PAID FOR UNDER AR501915 - REMOVE ROADWAY SIGN.

I:\18\JOBS\18A0002\18A0002\CAD\AIRPORT\18A0002-PRP.DWG  
NOV 15, 2018 3:13 PM SCHWEITZ



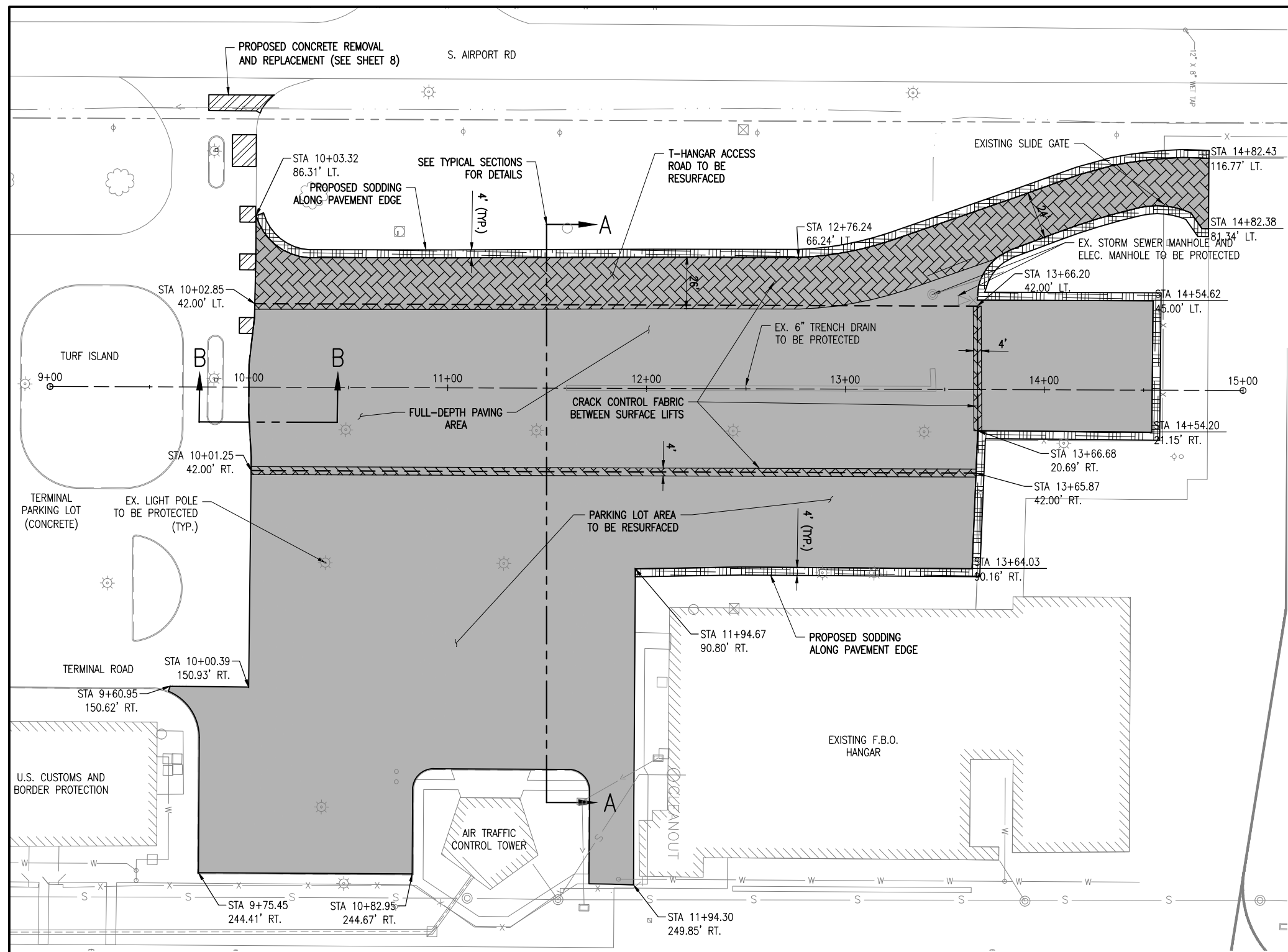
Decatur Park District  
Decatur Airport  
910 South Airport Road  
Decatur, IL 62521



0' 15' 30' 60'  
HALF SIZE SCALE: 1" = 60'  
FULL SIZE SCALE: 1" = 30'

**LEGEND**

- PROPOSED PAVING AREA
- AR201670 CRACK CONTROL FABRIC
- AR904510 SODDING
- AR501910 REMOVE & REPLACE PCC PAVEMENT
- EXISTING FENCE
- EXISTING STORM SEWER
- EXISTING WATERLINE
- EXISTING SANITARY
- EXISTING TELEPHONE
- EXISTING FIBER OPTIC
- EXISTING GAS
- EXISTING ELECTRIC
- EXISTING STORM INLET/MAHOLE
- EXISTING LIGHT POLE/POLE-MOUNTED LIGHT



I:\18\JOBS\18A0002\18A0002\CAD\AIRPORT\18A0002\18A0002\CON\DWG  
 NOV 15, 2018 3:13 PM SCHWEITZB

**REHABILITATE NORTH TERMINAL AUTOMOBILE PARKING AREA**

IDA No: DEC-4623

Contract No. DE080


NO.	DATE	DESCRIPTION		
		DES	DWN	REV

ISSUE: 11/16/2018

PROJECT NO: 18A0002

CAD FILE: C-103-CON.DWG

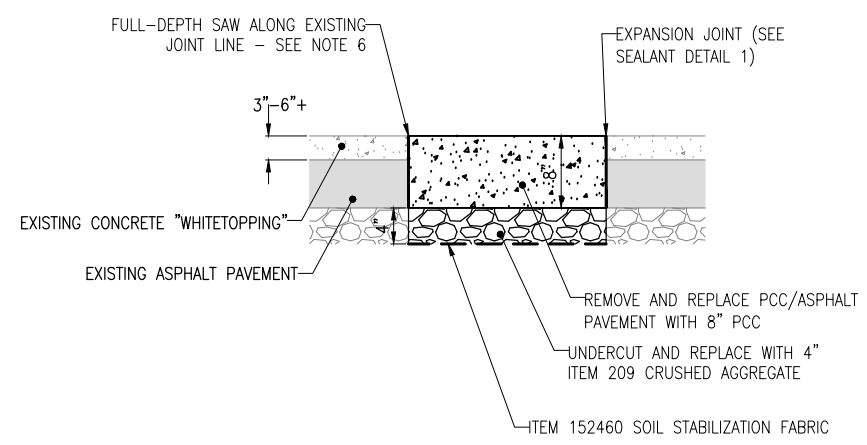
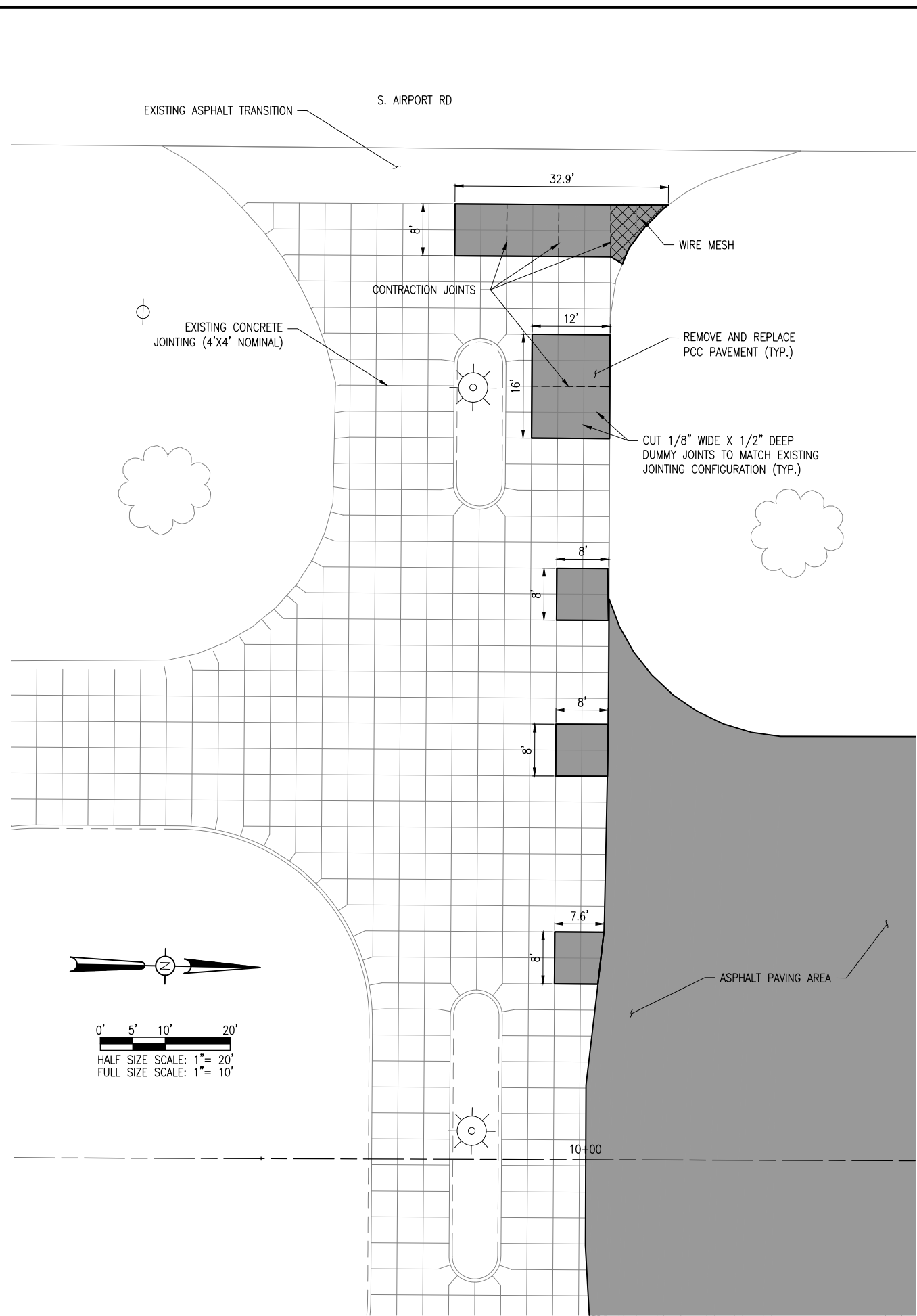
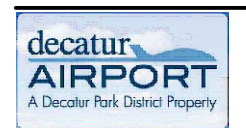
DESIGN BY: MJD

DRAWN BY: MJD

REVIEWED BY: KBS 10/18/18

SHEET TITLE

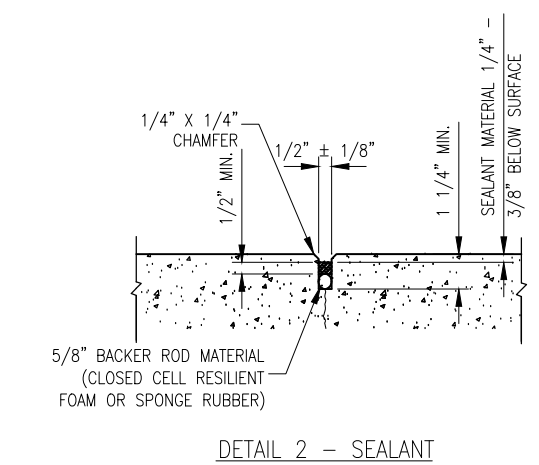
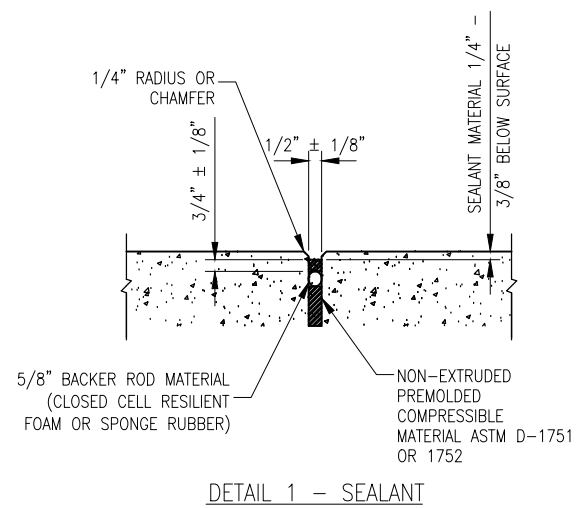
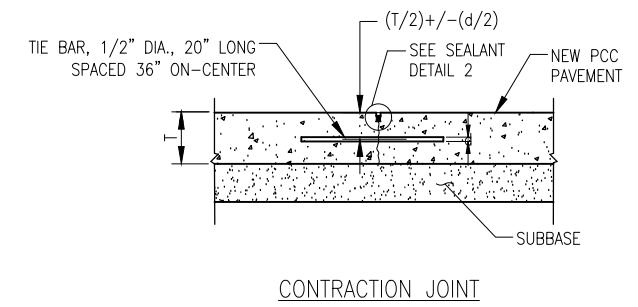
**CONSTRUCTION PLAN**



**REMOVE AND REPLACE PCC PAVEMENT DETAIL**  
NOT TO SCALE

**NOTES:**

1. RESIDENT ENGINEER/TECHNICIAN WILL CONFIRM AND LAYOUT PATCHING LIMITS.
2. PCC MIX SHALL BE IDOT CLASS PP-2.
3. CRUSHED AGGREGATE BASE SHALL BE PAID FOR UNDER PAY ITEM AR209510 "CRUSHED AGGREGATE BASE COURSE" - PER TON.
4. SOIL STABILIZATION FABRIC SHALL BE PAID FOR UNDER PAY ITEM AR152460
5. ALL OTHER WORK AND MATERIALS SHOWN, INCLUDING JOINTING AND SEALING, SHALL BE INCLUDED IN AND PAID FOR UNDER PAY ITEM AR501910 "REMOVE AND REPLACE PCC PAVEMENT" - PER SQUARE YARD.
6. CARE SHALL BE TAKEN NOT TO DAMAGE EXISTING CONCRETE PANELS WHILE SAW-CUTTING AND REMOVING EXISTING PAVEMENT. CRACKED OR DAMAGED PANELS SHALL BE REMOVED AND REPLACED AT THE CONTRACTOR'S EXPENSE.



**REHABILITATE NORTH TERMINAL  
AUTOMOBILE PARKING  
AREA**

IDA No: DEC-4623

Contract No. DE080


NO.	DATE	DESCRIPTION		
		DES	DWN	REV

ISSUE: 11/16/2018  
PROJECT NO: 18A0002  
CAD FILE: C-104-CON.DWG  
DESIGN BY: KBS  
DRAWN BY: KBS  
REVIEWED BY: MJD 10/18/18

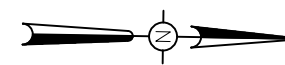
**CONCRETE  
PATCHING PLAN**

I:\18\JOBS\18A0002\18A0002\CAD\AIRPORT\ISHEETC-104-CON.DWG  
NOV 15, 2018 3:13 PM SCHWEITZ96





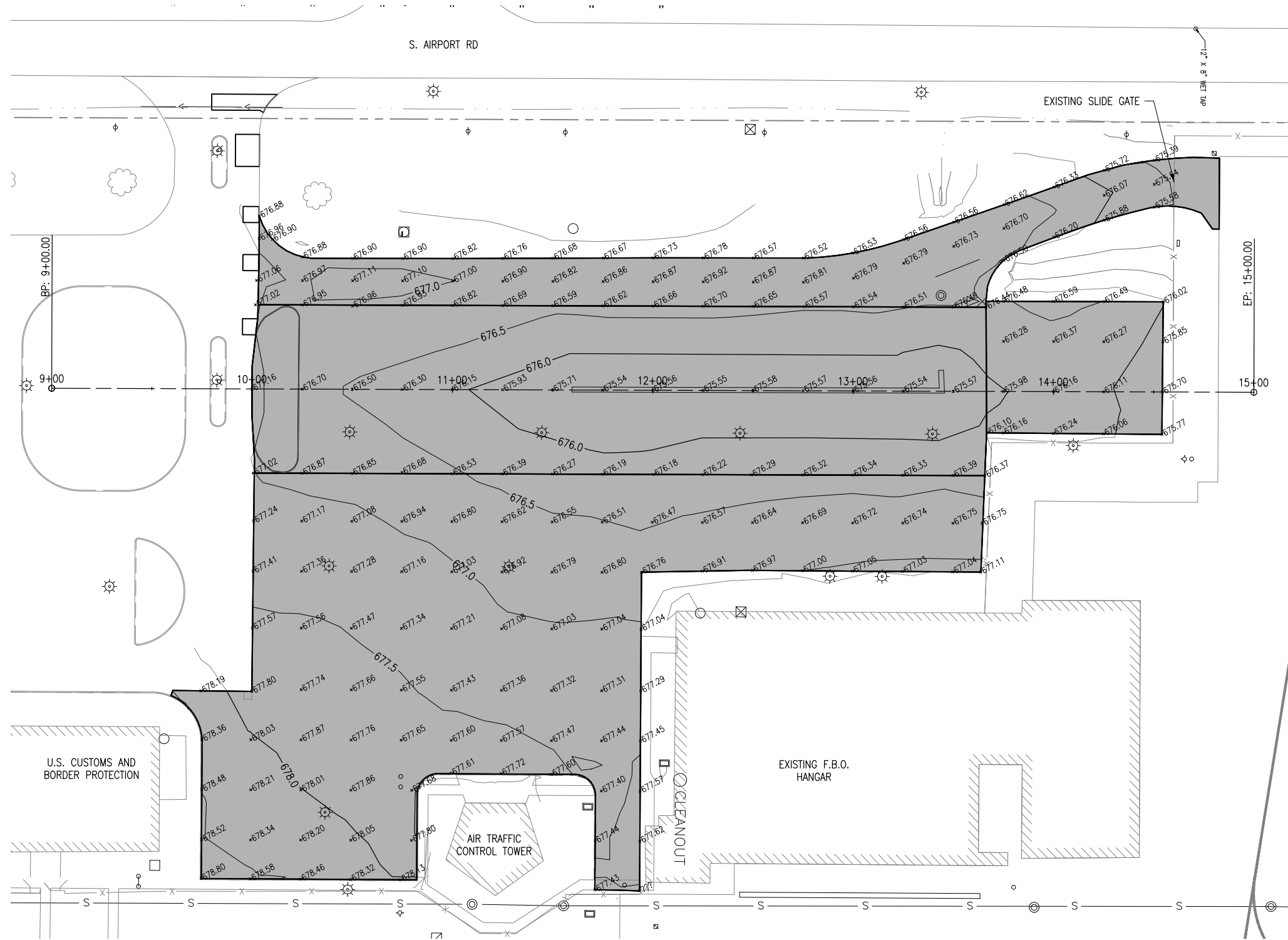
Decatur Park District  
Decatur Airport  
910 South Airport Road  
Decatur, IL 62521



0' 15' 30' 60'  
HALF SIZE SCALE: 1" = 60'  
FULL SIZE SCALE: 1" = 30'

**LEGEND**

- PROPOSED PAVING AREA
- EXISTING FENCE
- EXISTING STORM SEWER
- EXISTING WATERLINE
- EXISTING SANITARY
- EXISTING TELEPHONE
- EXISTING FIBER OPTIC
- EXISTING GAS
- EXISTING ELECTRIC
- EXISTING STORM INLET/MAHOLE
- EXISTING LIGHT POLE/  
POLE-MOUNTED LIGHT



U.S. CUSTOMS AND  
BORDER PROTECTION

AIR TRAFFIC  
CONTROL TOWER

EXISTING F.B.O.  
HANGAR

CLEANOUT

**REHABILITATE NORTH  
TERMINAL  
AUTOMOBILE PARKING  
AREA**

IDA No: DEC-4623

Contract No. DE080

NO.	DATE	DESCRIPTION		
		DES	DWN	REV

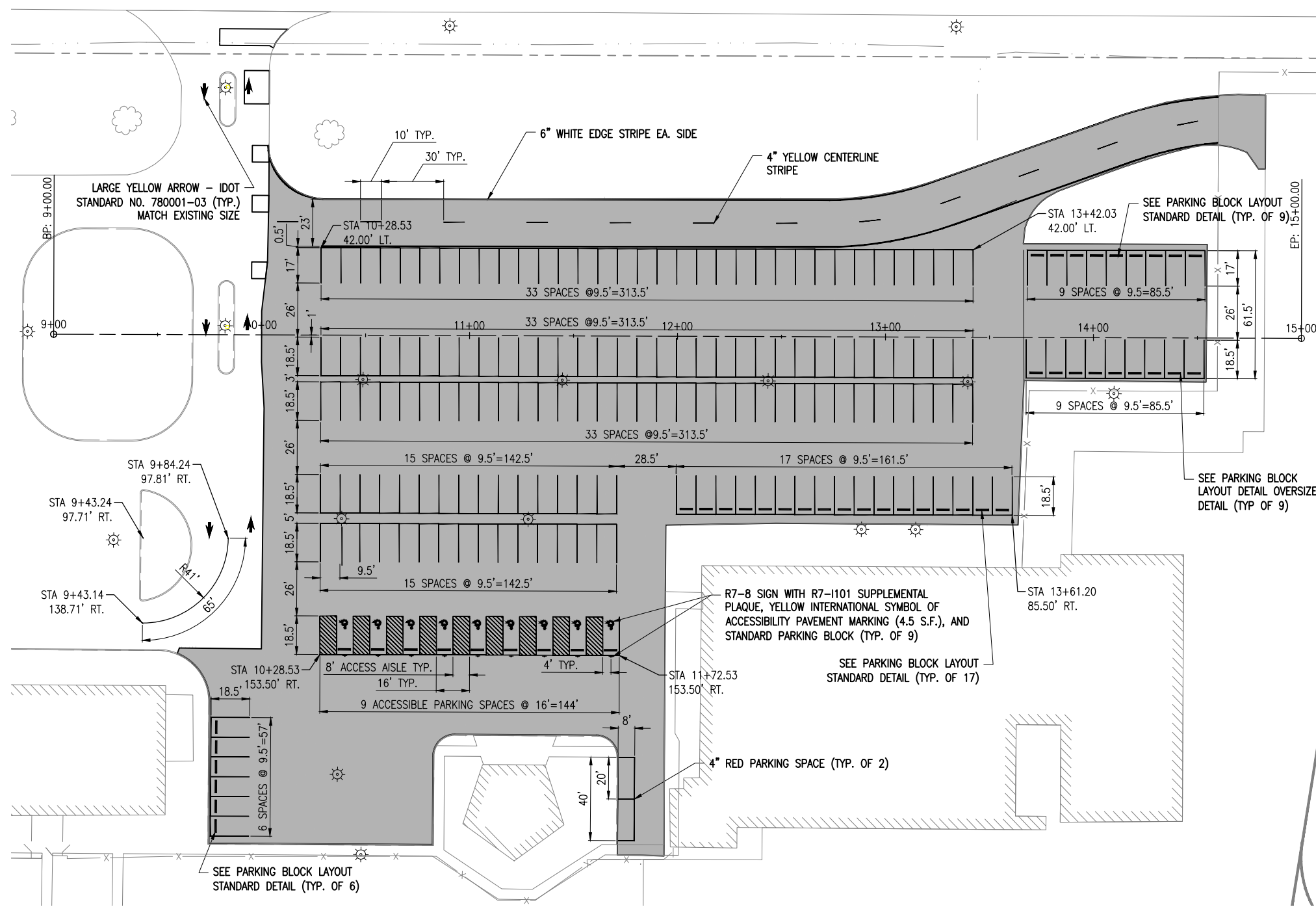
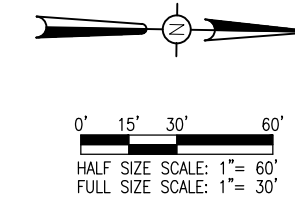
ISSUE: 11/16/2018  
PROJECT NO: 18A0002  
CAD FILE: C-104-STAKE.DWG  
DESIGN BY: MJD  
DRAWN BY: MJD KBS  
REVIEWED BY: 10/18/18

SHEET TITLE

**STAKING PLAN**



Decatur Park District  
Decatur Airport  
910 South Airport Road  
Decatur, IL 62521



**620 - WATERBORNE PAVEMENT MARKING NOTES**

1. PAVEMENT MARKINGS WILL BE PLACED IN ACCORDANCE WITH ITEM 620 "PAVEMENT MARKING" AS STATED IN THE ILLINOIS STANDARD SPECIFICATIONS FOR CONSTRUCTION OF AIRPORTS, ADOPTED APRIL 1, 2012.
2. PAVEMENT MARKING WILL BE APPLIED IN TWO APPLICATIONS AT THE LOCATIONS SHOWN ON THE CONSTRUCTION PLANS.
3. ANY MATERIAL DELIVERED THAT FAILS TO MEET THE SPECIFICATIONS SHALL BE DISPOSED OF BY THE VENDOR AND IMMEDIATELY REPLACED WITH ACCEPTABLE MATERIAL AT THE VENDOR'S EXPENSE.
4. GLASS BEADS SHALL BE APPLIED ON THE SECOND APPLICATION OF THE PAINT.
5. CUT-OFF SHEETS WILL BE REQUIRED TO ENSURE STRAIGHT EDGES.
6. ANY CLEANING OR REMOVAL REQUIRED WILL BE INCIDENTAL.

**REHABILITATE NORTH TERMINAL AUTOMOBILE PARKING AREA**

IDA No: DEC-4623

Contract No. DE080


NO.	DATE	DESCRIPTION		
		DES	DWN	REV

ISSUE: 11/16/2018  
PROJECT NO: 18A0002  
CAD FILE: C-105-MRK.DWG  
DESIGN BY: MJD  
DRAWN BY: MJD  
REVIEWED BY: KBS

**MARKING PLAN**

MARKING QUANTITIES			
DESCRIPTION	NO. REQUIRED	TOTAL LENGTH (FT)	TOTAL AREA (S.F.)
4" YELLOW PARKING STALLS	170	4861	1,620
4" YELLOW CENTERLINE STRIPES	12	120	40
4" WHITE EDGE STRIPE	2	920	460
LARGE YELLOW ARROW (IDOT STD. NO. 780001-03)	6	AS SHOWN	72
4" YELLOW PAVEMENT MARKING (41' RADIUS)	1	65	22
ACCESSIBLE PARKING SPACES (4" STRIPES)	9	1513	505
INTERNATIONAL SYMBOL OF ACCESSIBILITY	9	AS SHOWN	45
4" RED PARKING SPACE	2	104	35
TOTAL (AR620520)			2,799

SIGN AND PARKING BLOCK QUANTITIES	
DESCRIPTION	NO. REQUIRED
OVERSIZE PARKING BLOCKS (AR910410)	9
STANDARD PARKING BLOCKS (AR910410)	41
R7-8 SIGN WITH R7-1101 PLAQUE AND POST (AR910230)	9

I:\18\0002\18A0002\18A0002\CAD\AIRPORT\ISHEET\C-105-MRK.DWG  
NOV 15, 2018 3:14 PM SCHWEI296



Decatur Park District  
Decatur Airport  
910 South Airport Road  
Decatur, IL 62521

**REHABILITATE NORTH  
TERMINAL  
AUTOMOBILE PARKING  
AREA**

IDA No: DEC-4623

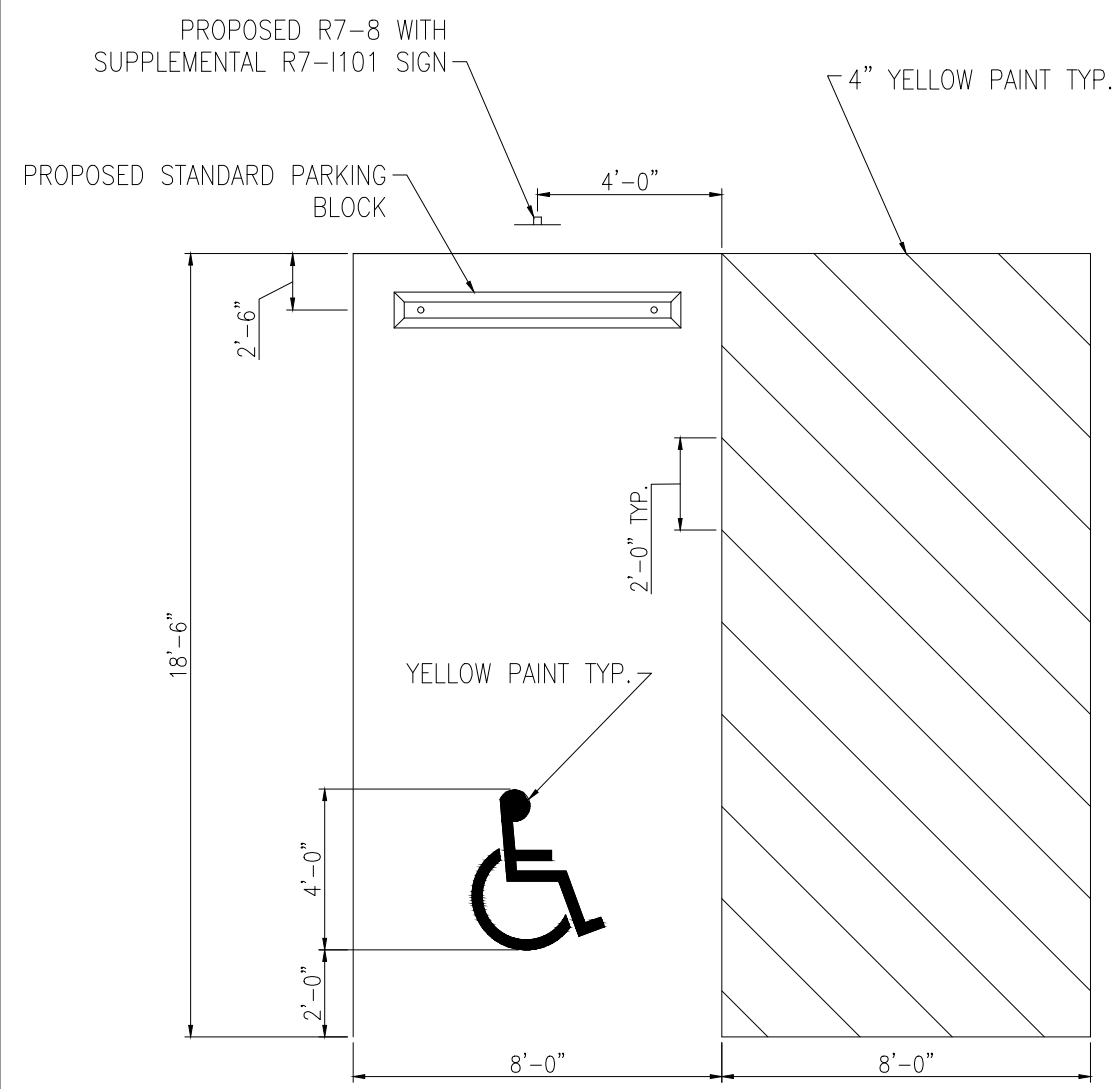
Contract No. DE080

NO.	DATE	DESCRIPTION		
		DES	DWN	REV

ISSUE: 11/16/2018  
PROJECT NO: 18A0002  
CAD FILE: C-501-DETL.DWG  
DESIGN BY: MJD 10/15/2018  
DRAWN BY: MJD 10/15/2018  
REVIEWED BY: KBS 11/14/2018

SHEET TITLE

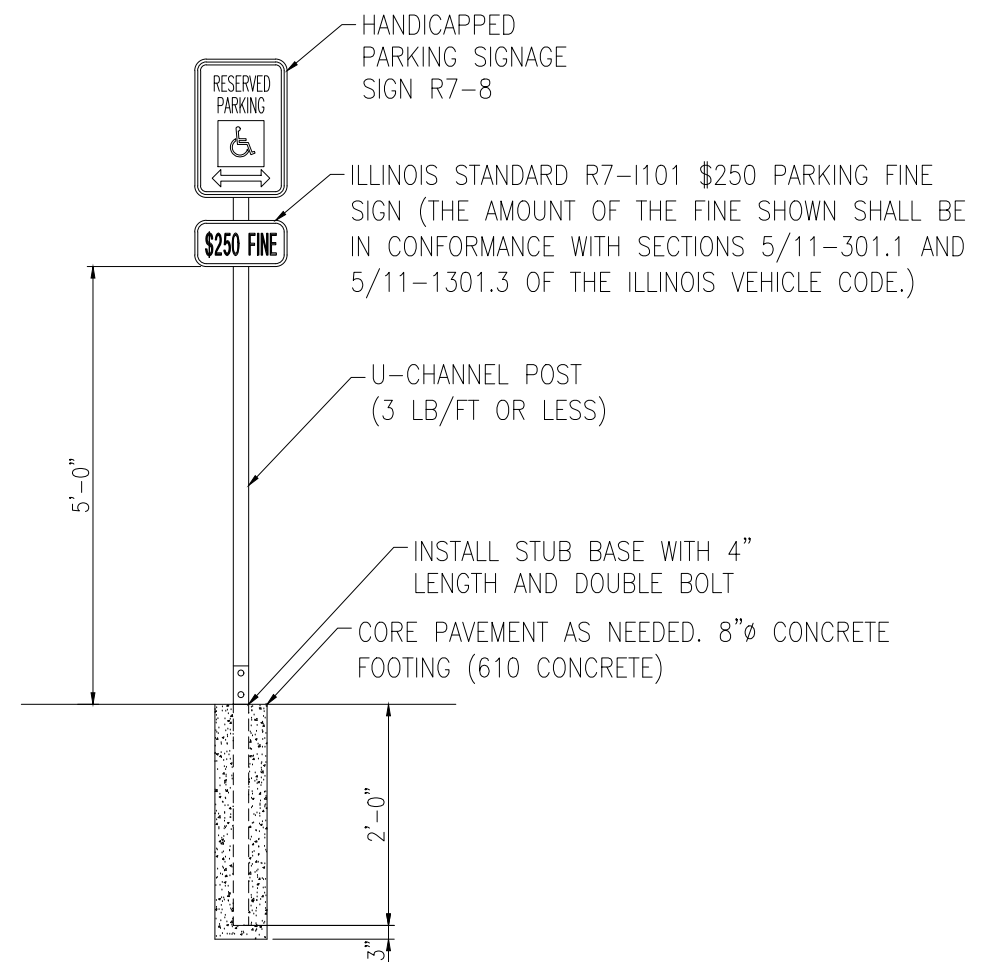
**MARKING AND SIGN  
DETAILS**



TYPICAL HANDICAPPED PARKING SPACE PAINT STRIPING

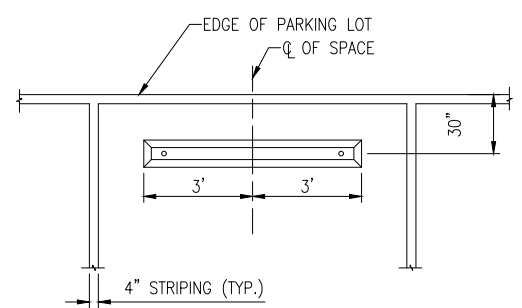
SCALE: NONE

NOTE: CENTER SYMBOL AND PARKING BLOCK HORIZONTALLY IN STALL.



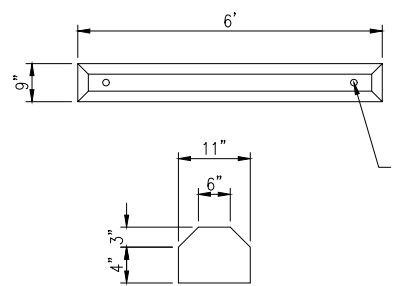
TYPICAL SIGNAGE DETAIL

NOT TO SCALE



PARKING BLOCK LAYOUT

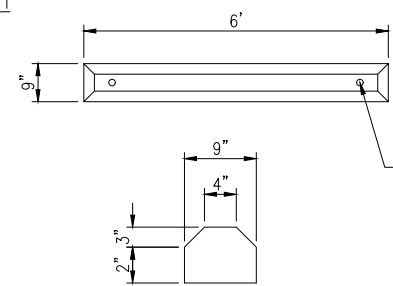
NOT TO SCALE



OVERSIZE PRE-CAST PARKING BLOCK

NOT TO SCALE

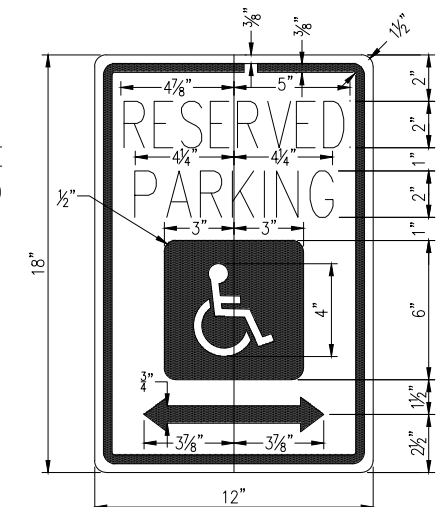
NOTES: THE OVERSIZE PARKING BLOCK MUST MATCH THE EXISTING SIZE AS SHOWN. THE PARKING BLOCK SHALL BE INSTALLED WITH A MIN OF TWO PINS AT EACH END WITH A MIN EMBEDMENT OF 15" AND BE PAINTED YELLOW.



STANDARD PRE-CAST PARKING BLOCK

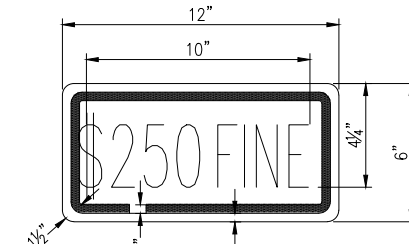
NOT TO SCALE

NOTES: A FUNCTIONAL EQUIVALENT OF THE STANDARD PARKING BLOCK MAY BE USED IF APPROVED BY THE ENGINEER AND AIRPORT MANAGER PRIOR TO INSTALLATION. THE PARKING BLOCK SHALL BE INSTALLED WITH A MIN OF TWO PINS AT EACH END WITH A MIN EMBEDMENT OF 15" AND BE PAINTED YELLOW.



HANDICAPPED PARKING SIGN R7-8

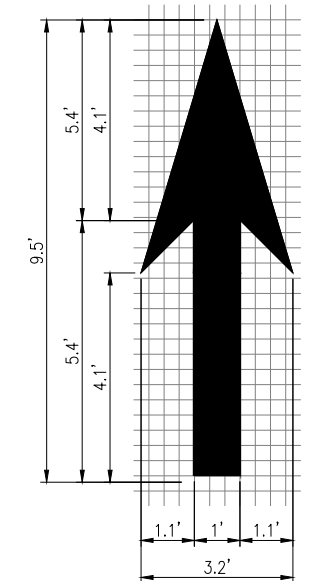
NOT TO SCALE



ILLINOIS STANDARD R7-1101

NOT TO SCALE

NOTE: THIS PLATE MUST BE DIRECTLY MOUNTED BELOW THE R7-8 SIGN. THE SIGN CANNOT BE COMBINED ON A SINGLE 12 INCH BY 24 INCH SIGN (R7-1101). ALL LETTERS AND NUMBERS SHALL MEET ILLINOIS STANDARDS.



PAVEMENT DIRECTION ARROW

NOT TO SCALE

NOTE: THE PROPOSED DIRECTIONAL ARROW PAVEMENT MARKINGS SHALL BE LOCATED AS SHOWN ON THE PAVEMENT MARKING PLAN. LAYOUT OF ARROWS SHALL BE APPROVED BY RESIDENT ENGINEER AND OWNER PRIOR TO PAINTING. ARROW SHALL CONFORM TO IDOT STANDARD DRAWING NO. 780001 - LARGE ARROW.

I:\18\0002\18A0002\18A0002\CAD\AIRPORT\18A0002\DETL.DWG NOV 15, 2018 3:14 PM SCHWEITZ



ELECTRICAL LEGEND - ONE-LINE DIAGRAM	
	CABLE TERMINATOR/LUG
	TRANSFORMER
	DISCONNECT SWITCH
	FUSIBLE DISCONNECT SWITCH
	CIRCUIT BREAKER
	THERMAL MAGNETIC CIRCUIT BREAKER
	FUSE
	TRANSIENT VOLTAGE SURGE SUPPRESSOR OR SURGE PROTECTOR DEVICE
	GROUND - GROUND ROD, GROUNDING ELECTRODE, OR AT EARTH POTENTIAL
	INDICATING LIGHT
	MOTOR
	LOAD, MOTOR, # = HORSEPOWER
	ELECTRIC UTILITY METER BASE
	JUNCTION BOX WITH SPLICE
	EQUIPMENT, XXX = DEVICE DESCRIPTION
	GROUND BUS OR TERMINAL
	NEUTRAL BUS
	PANELBOARD WITH MAIN LUGS
	PANELBOARD WITH MAIN BREAKER
	FUSE PANEL WITH MAIN FUSE PULLOUT
	DUPLEX RECEPTACLE 120V SINGLE PHASE GROUNDING TYPE
	CONTROL STATION
	TRANSFER SWITCH
	ENGINE GENERATOR SET

ELECTRICAL LEGEND - SCHEMATIC	
	NORMALLY OPEN (N.O.) CONTACT
	NORMALLY CLOSED (N.C.) CONTACT
	STARTER COIL, * = STARTER NUMBER
	OVERLOAD RELAY CONTACT
	CONTROL RELAY, * = CONTROL RELAY NUMBER
	RELAY, * = RELAY NUMBER
	TOGGLE SWITCH / 2 POSITION SWITCH
	2-POSITION SELECTOR SWITCH
	3-POSITION SELECTOR SWITCH (H-O-A SHOWN)
	2 POLE DISCONNECT SWITCH
	3 POLE DISCONNECT SWITCH
	PHOTOCELL
	TERMINAL BLOCK, * = TERMINAL NUMBER
	DEVICE TERMINAL, * = DEVICE TERMINAL NUMBER
	INTERNAL PANEL WIRING
	FIELD WIRING
	FUSE
	GROUND BUS OR TERMINAL
	NEUTRAL BUS
	GROUND, GROUND ROD, GROUND BUS
	INDUSTRIAL CONTROL RELAY OR LIGHTING CONTACTOR
	S1 CUTOUT HANDLE REMOVED
	S1 CUTOUT HANDLE INSERTED
	N.O. THERMAL SWITCH
	N.C. THERMAL SWITCH
	L-830 SERIES ISOLATION TRANSFORMER

ELECTRICAL ABBREVIATIONS	
A.F.F.	ABOVE FINISHED FLOOR
A, AMP	AMPERES
ATS	AUTOMATIC TRANSFER SWITCH
AWG	AMERICAN WIRE GAUGE
BKR	BREAKER
C	CONDUIT
CB	CIRCUIT BREAKER
CKT	CIRCUIT
CR	CONTROL RELAY
CU	COPPER
DPDT	DOUBLE POLE DOUBLE THROW
DPST	DOUBLE POLE SINGLE THROW
EM	EMERGENCY
EMT	ELECTRICAL METALLIC TUBING
ENCL	ENCLOSURE
EP	EXPLOSION PROOF
ES	EMERGENCY STOP
ETL	INTERTEK - ELECTRICAL TESTING LABS
ETM	ELAPSE TIME METER
GFCI	GROUND FAULT CIRCUIT INTERRUPTER
GFI	GROUND FAULT INTERRUPTER
GND	GROUND
GRSC	GALVANIZED RIGID STEEL CONDUIT
HID	HIGH INTENSITY DISCHARGE
HOA	HAND OFF AUTOMATIC
HP	HORSEPOWER
HPS	HIGH PRESSURE SODIUM
J	JUNCTION BOX
KVA	KILOVOLT AMPERE(S)
KW	KILOWATTS
LC	LIGHTING CONTACTOR
LTFMC	LIQUID TIGHT FLEXIBLE METAL CONDUIT (UL LISTED)
LTG	LIGHTING
LP	LIGHTING PANEL
MAX	MAXIMUM
MCB	MAIN CIRCUIT BREAKER
MCM	THOUSAND CIRCULAR MIL
MDP	MAIN DISTRIBUTION PANEL
MFR	MANUFACTURER
MH	METAL HALIDE
MIN	MINIMUM
MLO	MAIN LUGS ONLY
NEC	NATIONAL ELECTRICAL CODE (NFPA 70)
NC	NORMALLY CLOSED
NO	NORMALLY OPEN
NTS	NOT TO SCALE
OHE	OVERHEAD ELECTRIC
OL	OVERLOAD

ELECTRICAL ABBREVIATIONS (CONTINUED)	
PB	PULL BOX
PC	PHOTO CELL
PDB	POWER DISTRIBUTION BLOCK
PNL	PANEL
RCPT	RECEPTACLE
R	RELAY
S	STARTER
SPD	SURGE PROTECTION DEVICE
SPST	SINGLE POLE SINGLE THROW
TVSS	TRANSIENT VOLTAGE SURGE SUPPRESSOR
TYP	TYPICAL
UG	UNDERGROUND
UGE	UNDERGROUND ELECTRIC
UL	UNDERWRITER'S LABORATORIES
V	VOLTS
W/	WITH
W/O	WITHOUT
WP	WEATHER PROOF
XFER	TRANSFER
XFMR	TRANSFORMER

AIRPORT EQUIPMENT/FACILITY ABBREVIATIONS	
ASOS	AUTOMATED SURFACE OBSERVING SYSTEM
ATCT	AIR TRAFFIC CONTROL TOWER
AWOS	AUTOMATED WEATHER OBSERVING SYSTEM
CCR	CONSTANT CURRENT REGULATOR
DME	DISTANCE MEASURING EQUIPMENT
FAR	FEDERAL AVIATION REGULATION
GS	GLIDE SLOPE FACILITY
HIRL	HIGH INTENSITY RUNWAY LIGHT
ILS	INSTRUMENT LANDING SYSTEM
IM	INNER MARKER
LIR	LOW IMPACT-RESISTANT
LOC	LOCALIZER FACILITY
MALS	MEDIUM INTENSITY APPROACH LIGHTING SYSTEM
MALSR	MEDIUM INTENSITY APPROACH LIGHTING SYSTEM WITH RUNWAY ALIGNMENT INDICATING LIGHTS
MIRL	MEDIUM INTENSITY RUNWAY LIGHT
MITL	MEDIUM INTENSITY TAXIWAY LIGHT
NDB	NON-DIRECTIONAL BEACON
PAPI	PRECISION APPROACH PATH INDICATOR
PLASI	PULSE LIGHT APPROACH SLOPE INDICATOR
RAIL	RUNWAY ALIGNMENT INDICATING LIGHTS
REIL	RUNWAY END IDENTIFIER LIGHT
RVR	RUNWAY VISUAL RANGE
VADI	VISUAL APPROACH DESCENT INDICATOR
VASI	VISUAL APPROACH SLOPE INDICATOR
VOR	VERY HIGH FREQUENCY OMNIDIRECTIONAL RANGE FACILITY
WC	WIND CONE

NOTES:

- ALL ELECTRICAL EQUIPMENT SHALL BE INSTALLED IN CONFORMANCE WITH NFPA 70 - NATIONAL ELECTRICAL CODE (NEC) MOST CURRENT ISSUE IN FORCE, THE RESPECTIVE EQUIPMENT MANUFACTURER'S DIRECTIONS AND ALL OTHER APPLICABLE LOCAL CODES, LAWS, ORDINANCES, AND REQUIREMENTS IN FORCE. ANY INSTALLATIONS WHICH VOID THE U.L. LISTING, INTERTEK TESTING SERVICES VERIFICATION/ETL LISTING (OR OTHER THIRD PARTY LISTING) AND/OR THE MANUFACTURER'S WARRANTY OF A DEVICE WILL NOT BE PERMITTED.
- CONTRACTOR SHALL KEEP A COPY OF THE LATEST NEC IN FORCE ON SITE AT ALL TIMES DURING/CONSTRUCTION FOR USE AS A REFERENCE.
- ALL WORK, POWER OUTAGES, AND/OR SHUT DOWN OF EXISTING SYSTEMS SHALL BE COORDINATED WITH THE AIRPORT DIRECTOR/MANAGER. ONCE SHUT DOWN, THE CIRCUITS SHALL BE LABELED AS SUCH TO PREVENT ACCIDENTAL ENERGIZING OF THE RESPECTIVE CIRCUITS. ALL PERSONNEL SHALL FOLLOW U.S. DEPARTMENT OF LABOR OCCUPATIONAL SAFETY & HEALTH ADMINISTRATION (OSHA) 29 CFR PART 1910 OCCUPATIONAL SAFETY & HEALTH STANDARDS FOR ELECTRICAL SAFETY AND LOCKOUT/TAGOUT PROCEDURES INCLUDING, BUT NOT LIMITED TO, 29 CFR SECTION 1910.147 THE CONTROL OF HAZARDOUS ENERGY (LOCKOUT/TAGOUT).
- CONTRACTOR SHALL COMPLY WITH THE APPLICABLE REQUIREMENTS OF NFPA 70E- STANDARD FOR ELECTRICAL SAFETY IN THE WORKPLACE.
- SEE RESPECTIVE SITE PLANS FOR SITE LEGEND INFORMATION.
- CONTRACTOR SHALL FIELD VERIFY EXISTING SITE CONDITIONS. CONTRACTOR SHALL FIELD VERIFY RESPECTIVE CIRCUITS AND POWER SOURCES PRIOR TO REMOVING, DISCONNECTING, RELOCATING, ADJUSTING, WORKING ON, INSTALLING, OR CONNECTING THE RESPECTIVE EQUIPMENT OR OTHER DEVICE.
- HIGH VOLTAGE CIRCUITS (AIRFIELD LIGHTING 5000 VOLT SERIES CIRCUITS AND OTHER CIRCUITS RATED ABOVE 600 VOLTS) AND LOW VOLTAGE CIRCUITS (RATED 600 VOLTS AND BELOW) SHALL NOT BE INSTALLED IN THE SAME WIREWAY, CONDUIT, DUCT, RACEWAY, JUNCTION STRUCTURE OR HANDHOLE.

REHABILITATE NORTH TERMINAL AUTOMOBILE PARKING AREA

IDA No: DEC-4623

Contract No. DE080

NO.	DATE	DESCRIPTION		
		DES	DWN	REV

ISSUE: 11/16/2018  
PROJECT NO: 18A0002  
CAD FILE: E-001-LGND.DWG  
DESIGN BY: KNL 9/26/2018  
DRAWN BY: CWS 9/28/2018  
REVIEWED BY:

SHEET TITLE

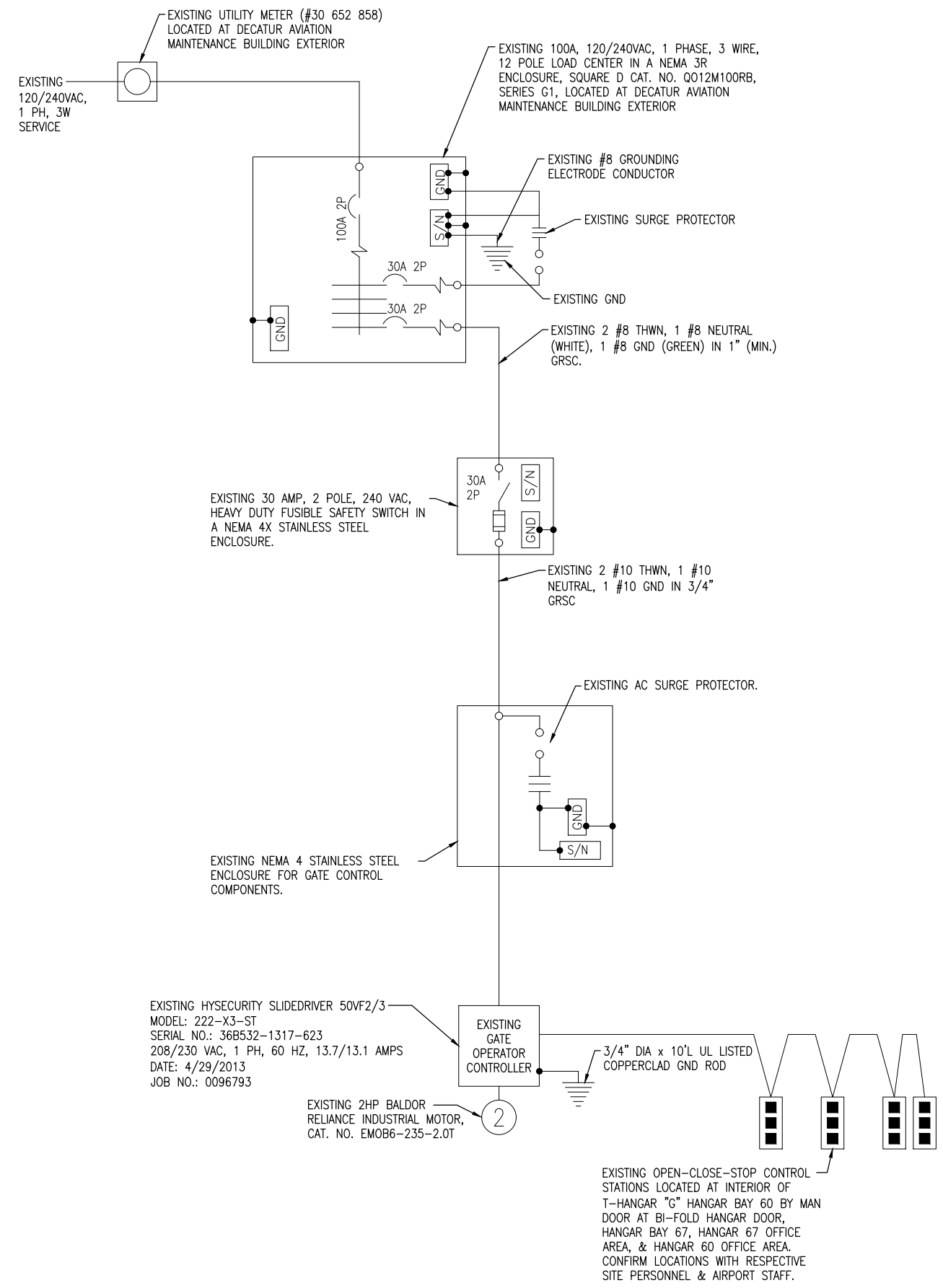
ELECTRICAL LEGEND AND ABBREVIATIONS





**NOTES**

1. ALL WORK, POWER OUTAGES, AND/OR SHUT DOWN OF EXISTING SYSTEMS SHALL BE COORDINATED WITH THE AIRPORT DIRECTOR/MANAGER. ONCE SHUT DOWN, THE CIRCUITS SHALL BE LABELED AS SUCH TO PREVENT ACCIDENTAL ENERGIZING OF THE RESPECTIVE CIRCUITS. ALL PERSONNEL SHALL FOLLOW U.S. DEPARTMENT OF LABOR OCCUPATIONAL SAFETY & HEALTH ADMINISTRATION (OSHA) 29 CFR PART 1910 OCCUPATIONAL SAFETY & HEALTH STANDARDS FOR ELECTRICAL SAFETY AND LOCKOUT/TAGOUT PROCEDURES INCLUDING, BUT NOT LIMITED TO, 29 CFR SECTION 1910.147 THE CONTROL OF HAZARDOUS ENERGY (LOCKOUT/TAGOUT).
2. CONTRACTOR SHALL EXAMINE THE SITE TO CONFIRM AND FIELD VERIFY EXISTING SITE CONDITIONS.
3. ALL ELECTRICAL EQUIPMENT AND MATERIALS SHALL BE INSTALLED IN CONFORMANCE WITH NFPA 70 – NATIONAL ELECTRIC CODE (NEC) MOST CURRENT ISSUE IN FORCE, THE RESPECTIVE EQUIPMENT MANUFACTURER'S DIRECTIONS AND ALL OTHER APPLICABLE LOCAL CODES, LAWS, ORDINANCES, AND REQUIREMENTS IN FORCE. ANY INSTALLATIONS WHICH VOID THE U.L. LISTING, INTERTEK TESTING SERVICES VERIFICATION/ETL LISTING (OR OTHER THIRD PARTY LISTING) AND/OR MANUFACTURER'S WARRANTY OF A DEVICE WILL NOT BE PERMITTED.
4. CONTRACTOR SHALL COMPLY WITH THE APPLICABLE REQUIREMENTS OF THE NFPA 70E – STANDARD FOR ELECTRICAL SAFETY IN THE WORKPLACE.
5. TEST EXISTING GATE OPERATOR SYSTEM IN PRESENCE OF AIRPORT DIRECTOR AND/OR RESIDENT ENGINEER/RESIDENT TECHNICIAN TO CONFIRM PROPER OPERATION PRIOR TO ANY REMOVAL WORK, MODIFICATIONS OR OTHER WORK THAT MIGHT POSSIBLY AFFECT THE GATE OPERATOR AND/OR DETECTOR LOOPS.
6. EXISTING SAFETY/DETECTOR LOOPS FOR THE RESPECTIVE GATES SHALL BE REMOVED AND REPLACED WITH NEW DETECTOR LOOPS TO ACCOMMODATE THE ASSOCIATED PAVING WORK. REPLACEMENT OF DETECTOR LOOPS WILL BE PAID FOR UNDER ITEM AR162570 DETECTOR LOOP PER LUMP SUM.



**EXISTING ELECTRICAL ONE-LINE  
DIAGRAM FOR GATE #2 OPERATOR  
(NORTH T-HANGAR ACCESS)**

I:\18\JOBS\18A0002\18A0002\CAD\AIRPORT\ISHEETE-601-ELEC.DWG  
NOV 15, 2016 3:14 PM SCHWEITZB

**REHABILITATE NORTH  
TERMINAL  
AUTOMOBILE PARKING  
AREA**

IDA No: DEC-4623

Contract No. DE080

NO.	DATE	DESCRIPTION		
		DES	DWN	REV

ISSUE: 11/16/2018  
PROJECT NO: 18A0002  
CAD FILE: E-601-ELEC.DWG  
DESIGN BY: KNL 9/26/2018/2018  
DRAWN BY: CWS 09/28/2018  
REVIEWED BY:  
SHEET TITLE

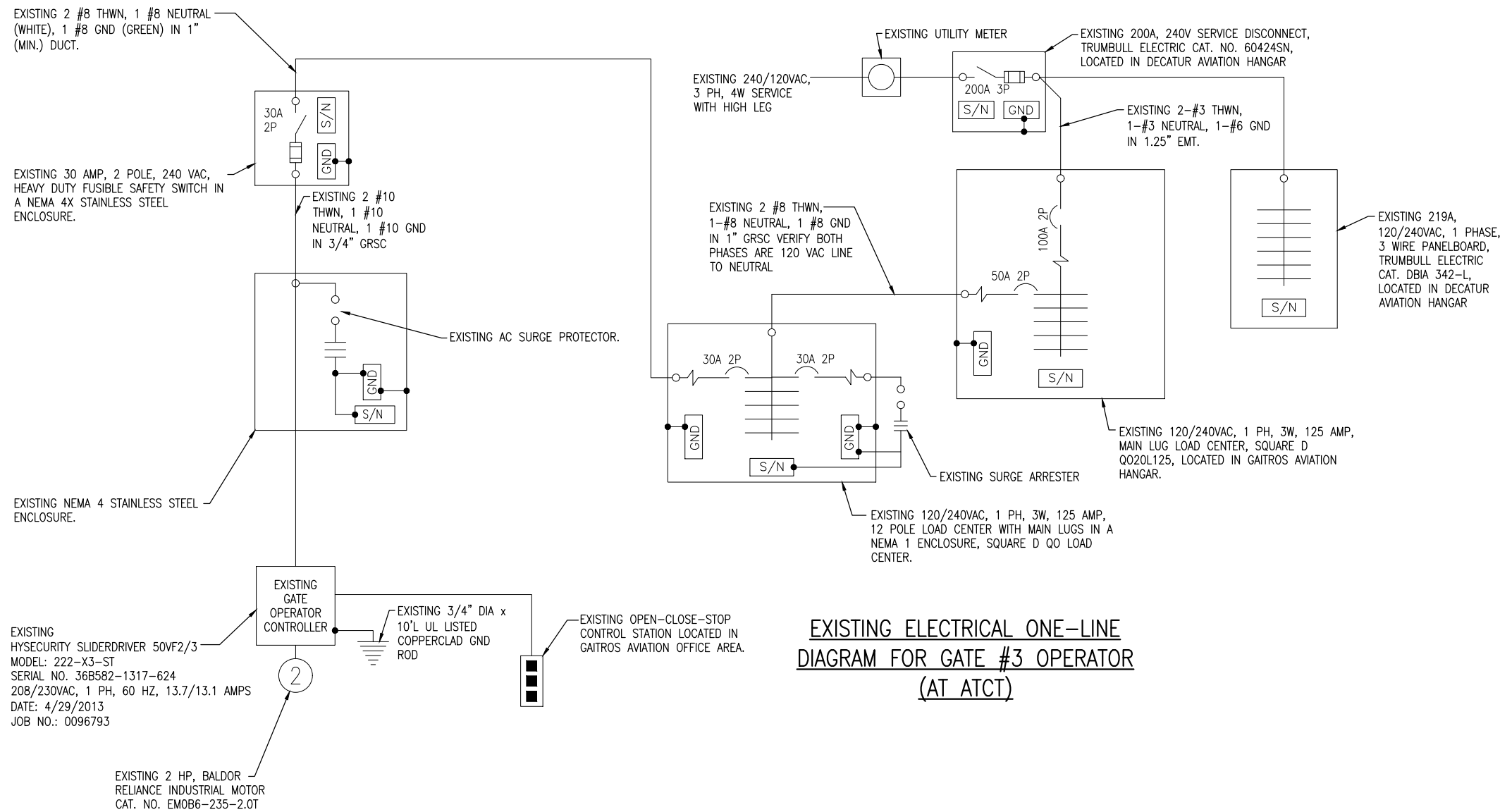
**EXISTING GATE 2  
ELECTRICAL  
ONE-LINE**



Decatur Park District  
Decatur Airport  
910 South Airport Road  
Decatur, IL 62521

**NOTES**

1. ALL WORK, POWER OUTAGES, AND/OR SHUT DOWN OF EXISTING SYSTEMS SHALL BE COORDINATED WITH THE AIRPORT DIRECTOR/MANAGER. ONCE SHUT DOWN, THE CIRCUITS SHALL BE LABELED AS SUCH TO PREVENT ACCIDENTAL ENERGIZING OF THE RESPECTIVE CIRCUITS. ALL PERSONNEL SHALL FOLLOW U.S. DEPARTMENT OF LABOR OCCUPATIONAL SAFETY & HEALTH ADMINISTRATION (OSHA) 29 CFR PART 1910 OCCUPATIONAL SAFETY & HEALTH STANDARDS FOR ELECTRICAL SAFETY AND LOCKOUT/TAGOUT PROCEDURES INCLUDING, BUT NOT LIMITED TO, 29 CFR SECTION 1910.147 THE CONTROL OF HAZARDOUS ENERGY (LOCKOUT/TAGOUT).
2. CONTRACTOR SHALL EXAMINE THE SITE TO CONFIRM AND FIELD VERIFY EXISTING SITE CONDITIONS.
3. ALL ELECTRICAL EQUIPMENT AND MATERIALS SHALL BE INSTALLED IN CONFORMANCE WITH NFPA 70 - NATIONAL ELECTRIC CODE (NEC) MOST CURRENT ISSUE IN FORCE, THE RESPECTIVE EQUIPMENT MANUFACTURER'S DIRECTIONS AND ALL OTHER APPLICABLE LOCAL CODES, LAWS, ORDINANCES, AND REQUIREMENTS IN FORCE. ANY INSTALLATIONS WHICH VOID THE U.L. LISTING, INTERTEK TESTING SERVICES VERIFICATION/ETL LISTING (OR OTHER THIRD PARTY LISTING) AND/OR MANUFACTURER'S WARRANTY OF A DEVICE WILL NOT BE PERMITTED.
4. CONTRACTOR SHALL COMPLY WITH THE APPLICABLE REQUIREMENTS OF THE NFPA 70E - STANDARD FOR ELECTRICAL SAFETY IN THE WORKPLACE.
5. TEST EXISTING GATE OPERATOR SYSTEM IN PRESENCE OF AIRPORT DIRECTOR AND/OR RESIDENT ENGINEER/RESIDENT TECHNICIAN TO CONFIRM PROPER OPERATION PRIOR TO ANY REMOVAL WORK, MODIFICATIONS OR OTHER WORK THAT MIGHT POSSIBLY AFFECT THE GATE OPERATOR AND/OR DETECTOR LOOPS.
6. EXISTING SAFETY/DETECTOR LOOPS FOR THE RESPECTIVE GATES SHALL BE REMOVED AND REPLACED WITH NEW DETECTOR LOOPS TO ACCOMMODATE THE ASSOCIATED PAVING WORK. REPLACEMENT OF DETECTOR LOOPS WILL BE PAID FOR UNDER ITEM AR162570 DETECTOR LOOP PER LUMP SUM.



**EXISTING ELECTRICAL ONE-LINE  
DIAGRAM FOR GATE #3 OPERATOR  
(AT ATCT)**

**REHABILITATE NORTH  
TERMINAL  
AUTOMOBILE PARKING  
AREA**

IDA No: DEC-4623

Contract No. DE080

NO.	DATE	DESCRIPTION		
		DES	DWN	REV

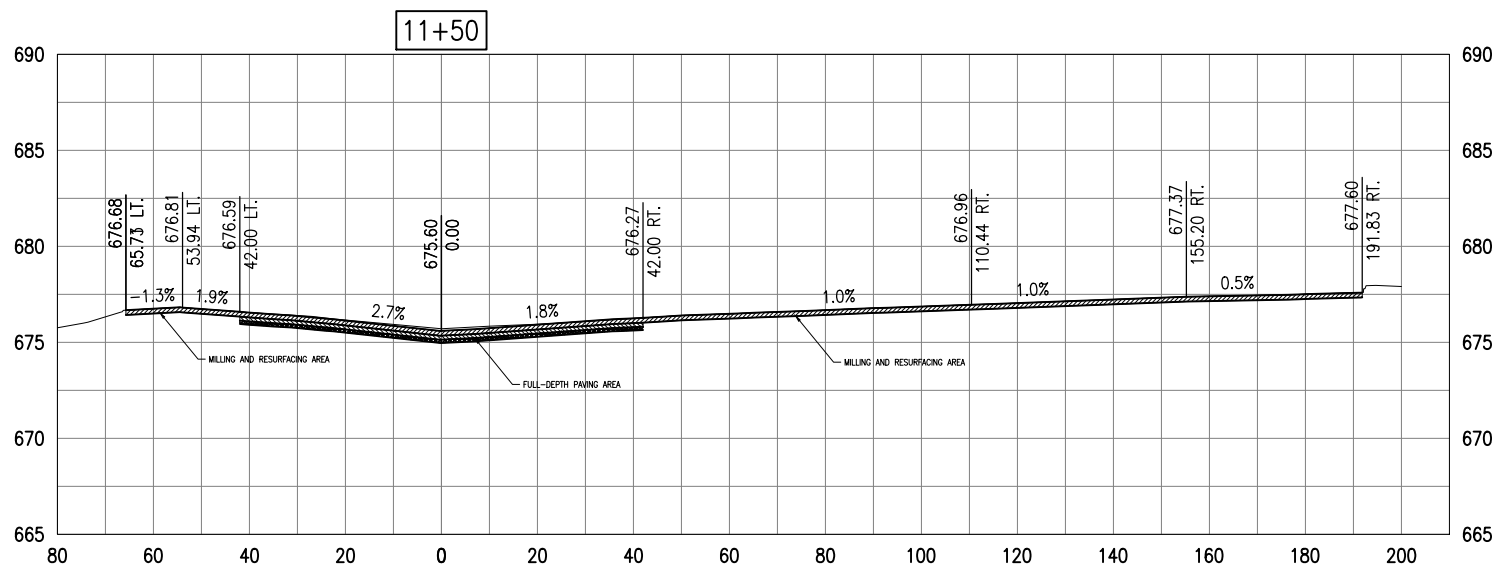
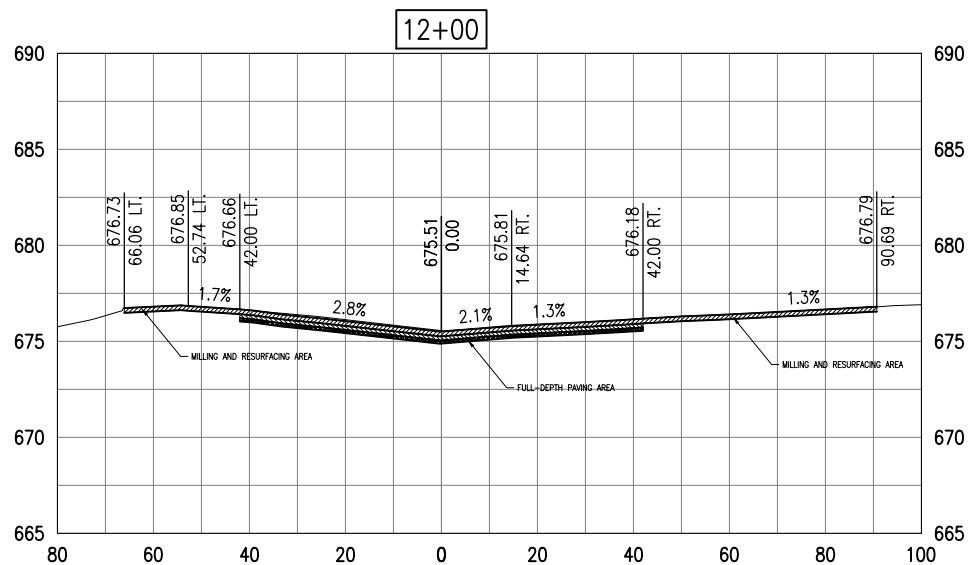
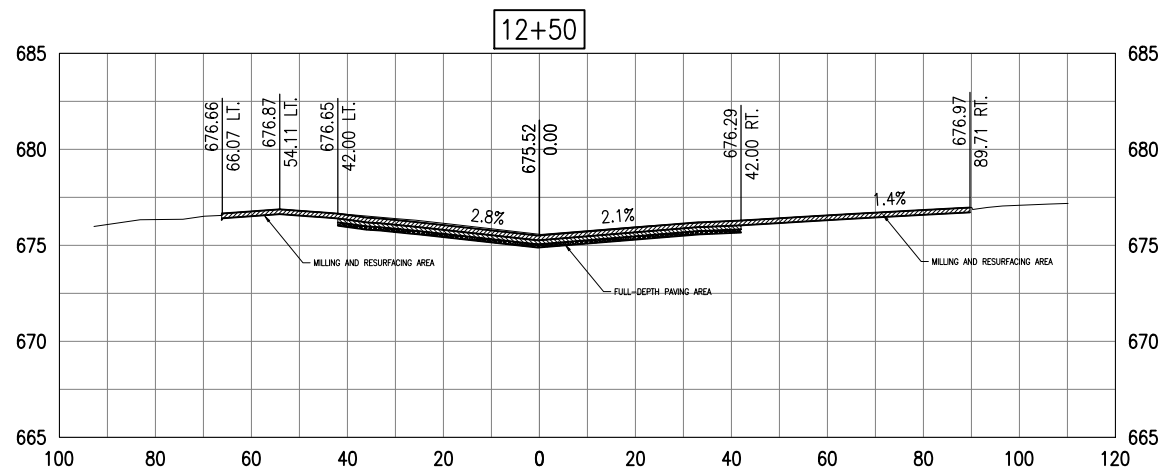
ISSUE: 11/16/2018  
PROJECT NO: 18A0002  
CAD FILE: E-602-ELEC.DWG  
DESIGN BY: KNL 09/26/2018  
DRAWN BY: CWS 09/28/2018  
REVIEWED BY:

SHEET TITLE

**EXISTING GATE 3  
ELECTRICAL  
ONE-LINE**







I:\18\JOBS\18A0002\18A0002\CAD\AIRPORT\ISHEET\C-601-XSEC.DWG  
NOV 15, 2018 3:15 PM SCHWEITZB

**REHABILITATE NORTH TERMINAL  
AUTOMOBILE PARKING  
AREA**

IDA No: DEC-4623

Contract No. DE080


NO.	DATE	DESCRIPTION		
		DES	DWN	REV

ISSUE: 11/16/2018

PROJECT NO: 18A0002

CAD FILE: C-601-XSEC.DWG

DESIGN BY: JAP

DRAWN BY: JAP

REVIEWED BY: KBS 10/18/18

SHEET TITLE

PROPOSED CROSS  
SECTIONS STA 12+00  
TO 13+50

