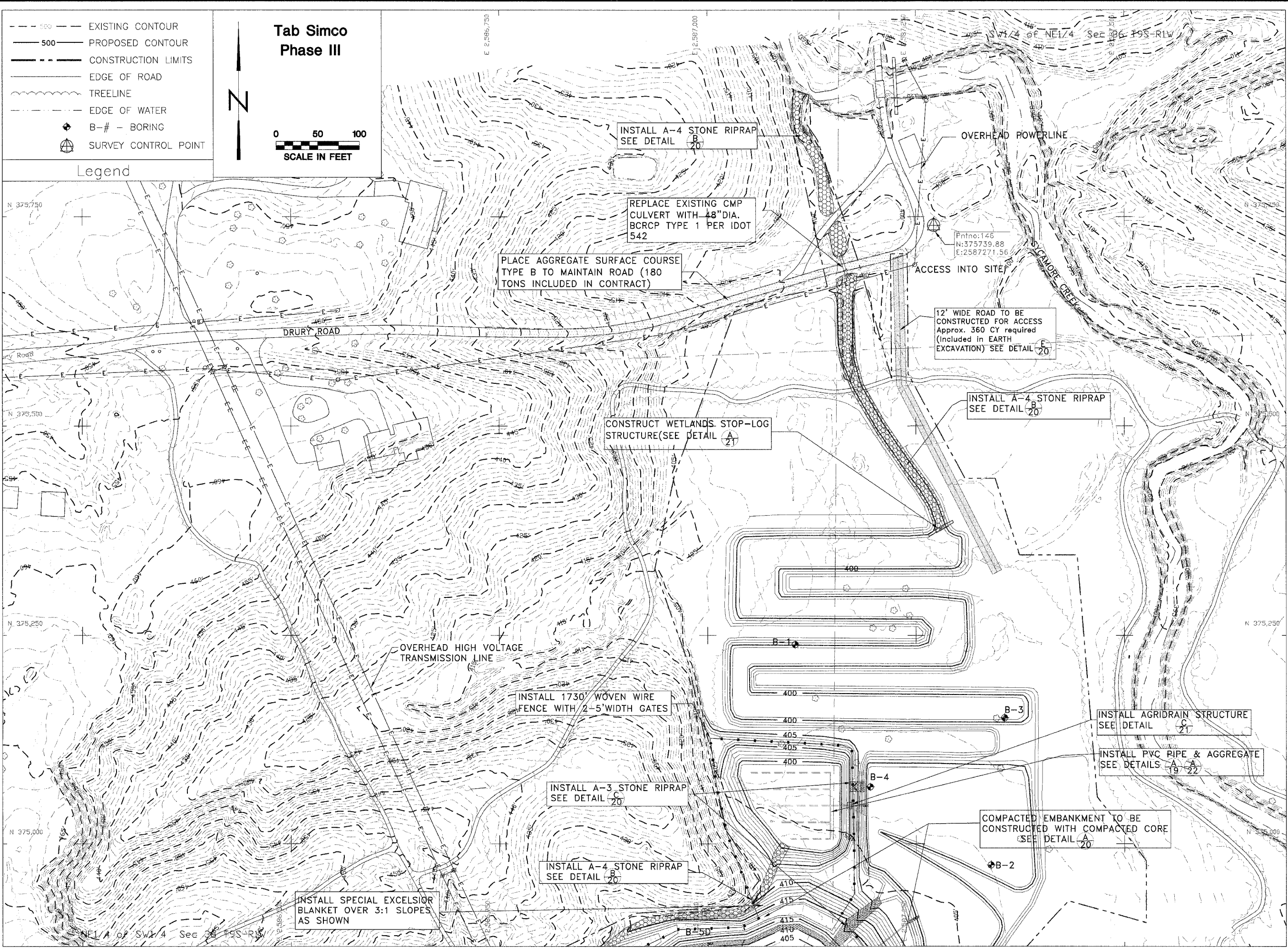
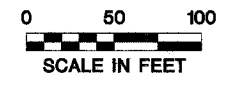


- 500 --- EXISTING CONTOUR
- 500 — PROPOSED CONTOUR
- CONSTRUCTION LIMITS
- EDGE OF ROAD
- ~ TREELINE
- - - EDGE OF WATER
- ⊕ B-# - BORING
- ⊙ SURVEY CONTROL POINT

Legend

Tab Simco
Phase III



INSTALL A-4 STONE RIPRAP
SEE DETAIL B-20

REPLACE EXISTING CMP
CULVERT WITH 48" DIA.
BCRCP TYPE 1 PER IDOT
542

PLACE AGGREGATE SURFACE COURSE
TYPE B TO MAINTAIN ROAD (180
TONS INCLUDED IN CONTRACT)

OVERHEAD POWERLINE

ACCESS INTO SITE

12' WIDE ROAD TO BE
CONSTRUCTED FOR ACCESS
Approx. 360 CY required
(Included in EARTH
EXCAVATION) SEE DETAIL E-20

INSTALL A-4 STONE RIPRAP
SEE DETAIL B-20

CONSTRUCT WETLANDS STOP-LOG
STRUCTURE(SEE DETAIL A-21)

OVERHEAD HIGH VOLTAGE
TRANSMISSION LINE

INSTALL 1730' WOVEN WIRE
FENCE WITH 2-5' WIDTH GATES

INSTALL AGRIDRAIN STRUCTURE
SEE DETAIL C-21

INSTALL PVC PIPE & AGGREGATE
SEE DETAILS A-19, A-22

INSTALL A-3 STONE RIPRAP
SEE DETAIL C-20

COMPACTED EMBANKMENT TO BE
CONSTRUCTED WITH COMPACTED CORE
SEE DETAIL A-20

INSTALL A-4 STONE RIPRAP
SEE DETAIL B-20

INSTALL SPECIAL EXCELSIOR
BLANKET OVER 3:1 SLOPES
AS SHOWN

Drawn By: _____
Checked By: _____
Date: _____