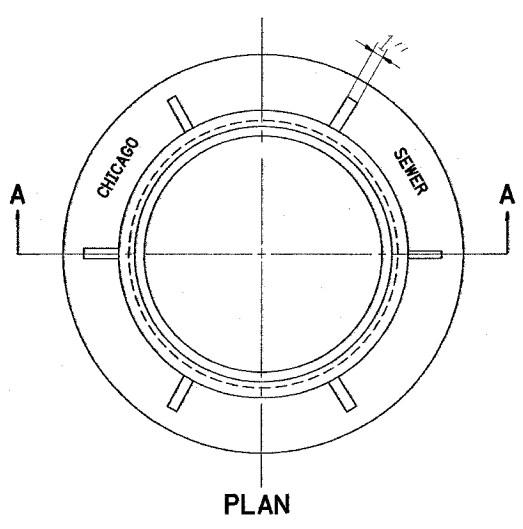
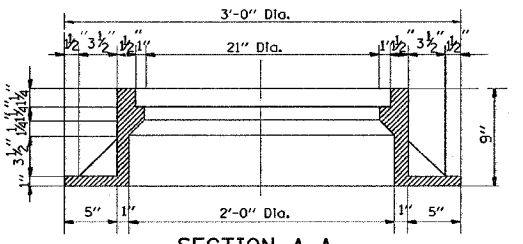


F.A.U. RTE.	SECTION	COUNTY	TOTAL SHEETS	SHEET NO.
1533	0505 RS-5	Cook	29	16
STA.	TO STA.			
FED. ROAD DIST. NO.	ILLINOIS	FED. AID PROJECT		



PLAN

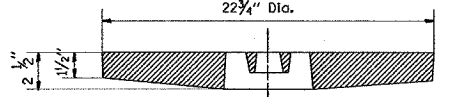


SECTION A-A

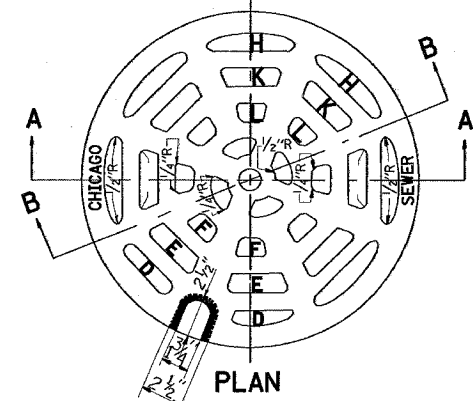
NOTE: Metal Plates Must Be Furnished For Perforated Lids On Manholes

CHICAGO STANDARD MANHOLE FRAME

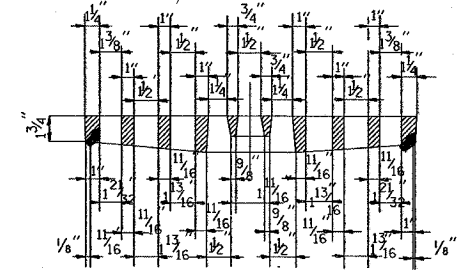
Scale: 1/2"=1'-0"
Material: Cast Iron



SECTION B-B



PLAN



SECTION A-A

PERFORATED LID FOR CATCH BASINS & MANHOLES

Scale: 2"=1'-0"
Material: Cast Iron

SECTION D-D

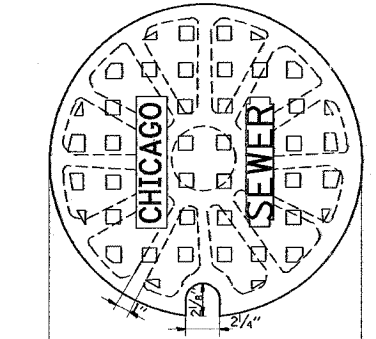
SECTION E-E

SECTION F-F

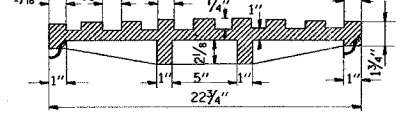
SECTION H-H

SECTION K-K

SECTION L-L



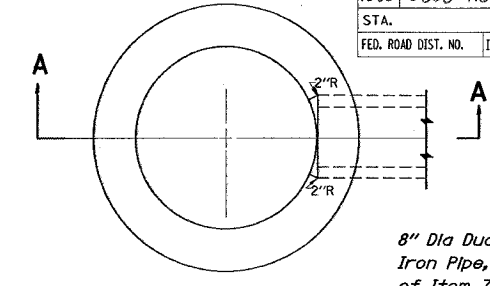
PLAN



SECTION

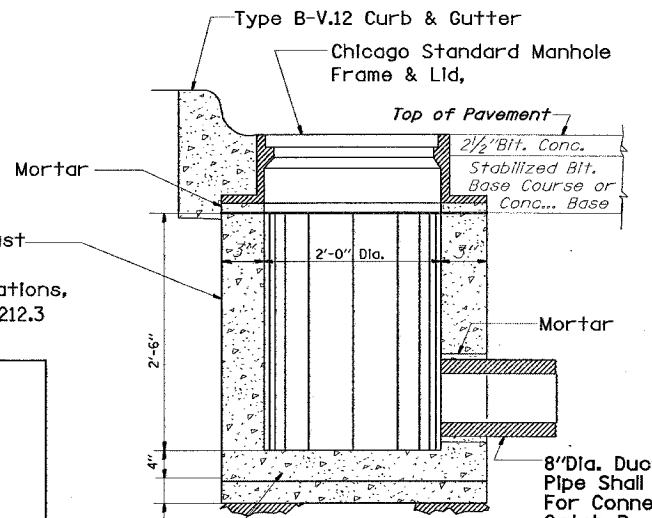
SOLID LID FOR MANHOLES

Scale: NONE
Material: Cast Iron



PLAN

(Frame & Lid Not Shown)

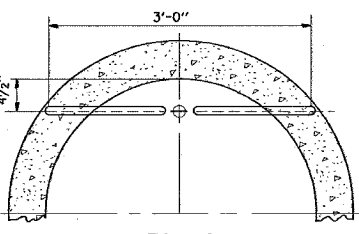


SECTION A-A

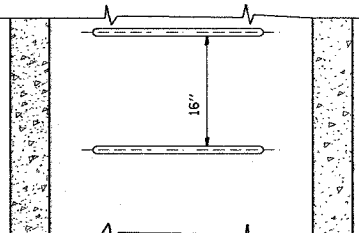
24" Dia. Precast Conc... Ring See Specifications, Part 2, Art 212.3

8" Dia Ductile Iron Pipe, Part of Item 76

8" Dia. Ductile Iron Pipe Shall Be Used For Connection to Catch Basin Pipe To Be Laid On A Minimum Grade of 1%

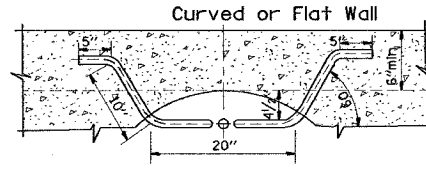


PLAN

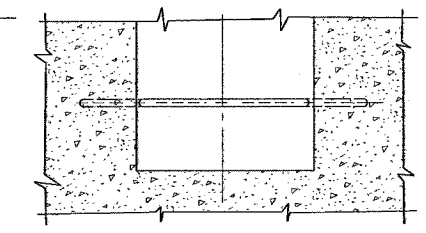


ELEVATION TYPE X

Scale: 1"=1'-0"

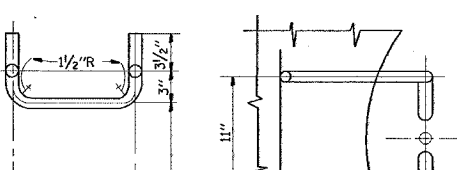


PLAN

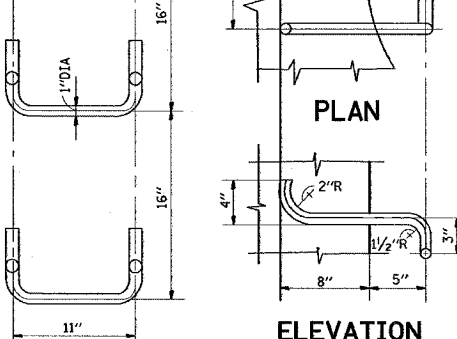


ELEVATION TYPE Y

Scale: 1"=1'-0"



PLAN

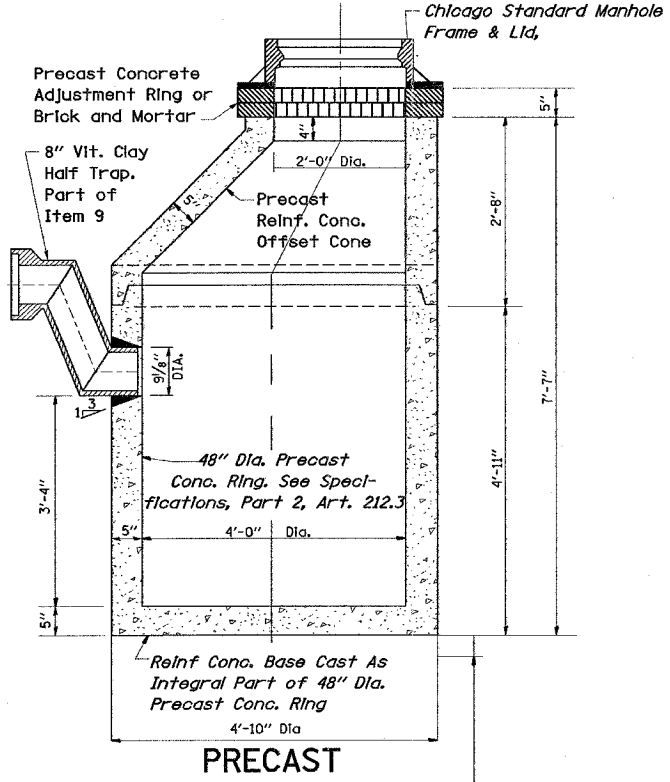


ELEVATION

SPACING HANDHOLD-TYPE Z RUNG

Scale: 1/2"=1'-0"

All Ladder Rungs Shall Be Aluminum or Galvanized Wrought Iron As Specified in Specifications, Part 2, Article 214.2. Rungs Shall Be 1" Diameter or of A Shape Having An Equivalent Cross-Sectional Area



PRECAST

Note: 6" Minimum Granular Embedment Under All Catch Basins

STANDARD CATCH BASINS

Scale: 3/4"=1'-0"
Item 9

STANDARD INLETS

Scale 1"=1'-0"
Item 12

This Inlet Detail Is Sometimes Referred To As "Chicago Standard Inlet, Type A"

NOTE: INLETS SHALL NOT BE CONSTRUCTED UNLESS IT IS IMPOSSIBLE TO CONSTRUCT A CATCH BASIN. THE CONTRACTOR SHALL HAVE THE DEPARTMENT OF SEWERS APPROVAL BEFORE CONSTRUCTING INLETS

REVISIONS	
NAME	DATE
M. GOMEZ	01/25/01

CITY OF CHICAGO
DEPARTMENT OF SEWERS
ENGINEERING DIVISION

ILLINOIS DEPARTMENT OF TRANSPORTATION

CITY OF CHICAGO
CATCH BASIN, INLET AND
MANHOLE DETAILS

SCALE: VERT.
HORIZ.
DATE: 11/6/2006

DRAWN BY
CHECKED BY

BD600-13 (BD47)
REVISION DATE: 01/25/01