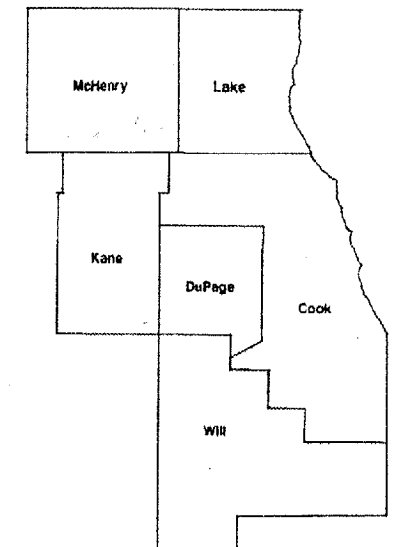


| ROUTE | SECTION | COUNTY | TOTAL SHEETS | SHEET NUMBER |
|---------|-------------|---------|--------------|--------------|
| VARIOUS | 2006-035 LS | VARIOUS | 27+1 = 28 | 1 |

CONTRACT 60B91

STATE OF ILLINOIS
DEPARTMENT OF TRANSPORTATION
DIVISION OF HIGHWAYS
DISTRICT ONE
PROPOSED HIGHWAY PLANS

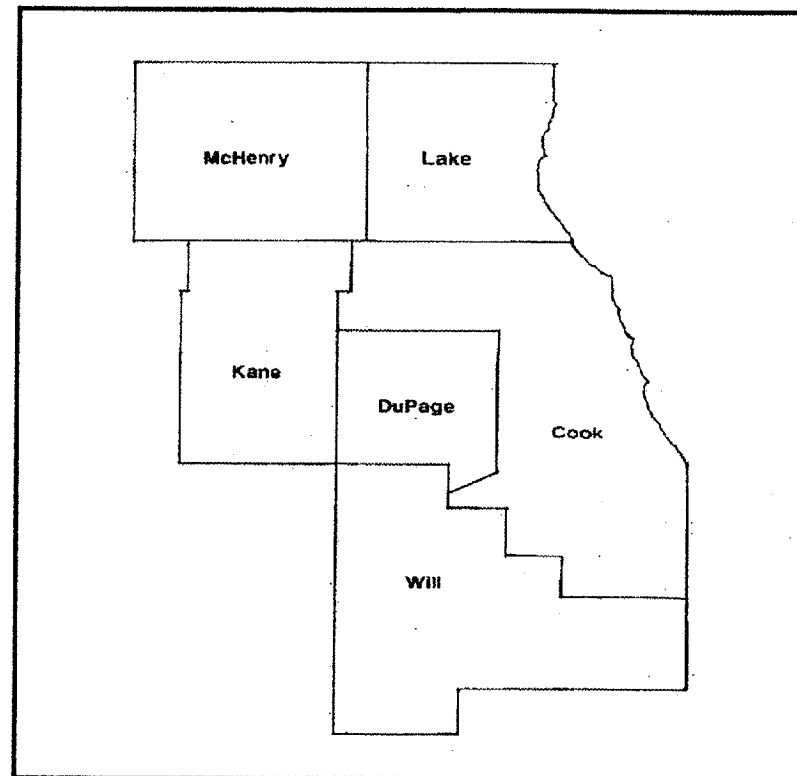
ROUTE: VARIOUS
SECTION: 2006-035 LS
LANDSCAPE REPAIR AND RENOVATION
VARIOUS COUNTIES
JOB NO.: C-91-022-07



LOCATION OF IMPROVEMENT INDICATED THUS:

FOR INDEX OF SHEETS SEE PAGE 2

**IMPROVEMENT IS IN VARIOUS
LOCATIONS WITHIN DISTRICT
ONE**



STATE OF ILLINOIS
DEPARTMENT OF TRANSPORTATION
DIVISION OF HIGHWAYS
SUBMITTED: Aug. 21 2006
Trane O'Keefe
DEPUTY DIRECTOR OF HIGHWAYS, REGION ENGINEER
October 13 2006
Mike Hine
ENGINEER OF DESIGN AND ENVIRONMENT
October 13 2006
Milton R. Sees, P.E.
DIRECTOR OF HIGHWAYS, CHIEF ENGINEER

**PRINTED BY THE AUTHORITY
OF THE STATE OF ILLINOIS**

J.U.L.I.E.: JOINT UTILITY LOCATION
INFORMATION FOR EXCAVATION
(800) 892-0123

Contract 60B91

DISTRICT ONE BUREAU OF MAINTENANCE: J. STUMPNER
MAINTENANCE LANDSCAPE DESIGNER: R. WANNER / M. DEL ROSARIO (847) 705-4171

| ROUTE | SECTION | COUNTY | TOTAL SHEETS | SHEET NUMBER |
|---------|-------------|---------|--------------|--------------|
| VARIOUS | 2006-035 LS | VARIOUS | 27 | 2 |

CONTRACT 60B91

INDEX OF SHEETS

STATE STANDARDS

| | | | |
|------|-----------------------------------------------------------------------------------|-----------|-----------|
| 1 | TITLE SHEET | 701001-01 | 701006-02 |
| 2 | INDEX OF SHEETS, STATE STANDARDS AND GENERAL NOTES | 701101-01 | 701311-02 |
| 3-4 | SUMMARY OF QUANTITIES | 702001-06 | 701400-02 |
| 5 | SAMPLE WORK ORDER | | 701406-04 |
| 6 | LOCATION SUMMARY | | 701106-01 |
| 7-26 | LAYOUT PLAN SHEETS | | |
| 27 | TC 17 TRAFFIC CONTROL DETAILS FOR FREEWAY SHOULDER CLOSURES PARTIAL RAMP CLOSURES | | |

GENERAL NOTES

FOR ARTERIALS THE CONTRACTOR SHALL CONTACT THE DISTRICT ONE TRAFFIC CONTROL SUPERVISOR AT (847) 705-4470 A MINIMUM OF 72 HOURS IN ADVANCE OF BEGINNING WORK.

BEFORE STARTING ANY EXCAVATION THE CONTRACTOR SHALL CALL THE STATE ELECTRICAL MAINTENANCE CONTRACTOR AT (773) 287-7600, EXTENSION 601, FOR FIELD LOCATIONS OF BURIED CABLE.

THE COST OF REMOVING AND DISPOSING DAMAGED TREES IN THIS CONTRACT SHALL BE INCLUDED IN THE CONTRACT UNIT PRICES FOR THE REPLACEMENT TREES.

ILLINOIS DEPARTMENT OF TRANSPORTATION

LANDSCAPE REPAIR
INDEX OF SHEETS
GENERAL NOTES
STATE STANDARDS

| | | | | |
|---------|-------------|---------|--------------|--------------|
| ROUTE | SECTION | COUNTY | TOTAL SHEETS | SHEET NUMBER |
| VARIOUS | 2006-035 LS | VARIOUS | 27 | 3 |

URBAN

CONTRACT 60B91

| PAY ITEM | DESCRIPTION | UNIT | Y003 100% STATE TOTAL | MCHD FUND | CONTRACT MAINT FUND |
|---------------------|----------------------------------------------------------------------------------------------------------------------------------|-----------------|-----------------------------|--------------|---------------------------|
| D2002490 | EVERGREEN, PINUS HELDREICHII VAR. LEUCODERMIS (BOSNIAN PINE), 5' BALLED & BURLAPPED | EACH | 10 | 0 | 10 |
| D2005492 | EVERGREEN, PINUS KORAIENSIS (KOREAN PINE), 5' HEIGHT, BALLED & BURLAPPED | EACH | 10 | 0 | 10 |
| X0325603 | PORTABLE DRIP IRRIGATION SYSTEM | EACH | 80 | 0 | 80 |
| 21101615 | TOPSOIL FURNISH AND PLACE, 4" | SQ YD | 7260 | 3630 | 3630 |
| 25000210 | SEEDING, CLASS 2A | ACRE | 1.5 | 0.75 | 0.75 |
| 25000400 | NITROGEN FERTILIZER NUTRIENT | POUND | 140 | 70 | 70 |
| 25000500 | PHOSPHORUS FERTILIZER NUTRIENT | POUND | 140 | 70 | 70 |
| 25000600 | POTASSIUM FERTILIZER NUTRIENT | POUND | 140 | 70 | 70 |
| 25003312 | INTERSEEDING, CLASS 4A | ACRE | 12 | 0 | 12 |
| 25003323 | INTERSEEDING, CLASS 5A (MODIFIED) | ACRE | 16 | 0 | 16 |
| 25100630 | EROSION CONTROL BLANKET | SQ YD | 7260 | 3630 | 3630 |
| 25200110 | SODDING, SALT TOLERANT | SQ YD | 600 | 300 | 300 |
| 25200200 | SUPPLEMENTAL WATERING | UNIT | 10.5 | 0.5 | 10 |
| A2000310 | TREE, ACER MIYABEI MORTON (STATE STREET MIYABE), 1-1/4" CALIPER, BALLED AND BURLAPPED | EACH | 10 | 0 | 10 |
| A2004720 | TREE, GLEDITSIA TRIACANTHOS INERMIS SHADEMASTER (SHADEMASTER THORNLESS COMMON HONEYLOCUST), 2-1/2" CALIPER, BALLED AND BURLAPPED | EACH | 17 | 1 | 16 |
| A2004816 | TREE, GLEDITSIA TRIACANTHOS INERMIS SKYLINE (SKYLINE THORNLESS COMMON HONEYLOCUST), 2" CALIPER, BALLED AND BURLAPPED | EACH | 20 | 0 | 20 |
| A2005016 | TREE, GYMNOCLADUS DIOICUS (KENTUCKY COFFEETREE), 2" CALIPER, BALLED AND BURLAPPED | EACH | 40 | 8 | 32 |
| A2006614 | TREE, QUERCUS IMBRICARIA (SHINGLE OAK), 1 3/4" CALIPER, BALLED AND BURLAPPED | EACH | 13 | 3 | 10 |
| A2006714 | TREE, QUERCUS MACROCARPA (BUR OAK), 1 3/4" CALIPER, BALLED AND BURLAPPED | EACH | 22 | 0 | 22 |
| A2007916 | TREE, TILIA AMERICANA REDMOND (REDMOND AMERICAN LINDEN), 2" CALIPER, BALLED AND BURLAPPED | EACH | 5 | 0 | 5 |
| B2001666 | TREE, CRATAEGUS CRUSGALLI INERMIS (THORNLESS COCKSPUR HAWTHORN), 6' HEIGHT, SHRUB FORM, BALLED AND BURLAPPED | EACH | 11 | 1 | 10 |
| B2002014 | TREE, MALUS BEVERLY (BEVERLY CRABAPPLE), 1 3/4" CALIPER, TREE FORM, BALLED AND BURLAPPED | EACH | 14 | 0 | 14 |
| B2003314 | TREE, MALUS DONALD WYMAN (DONALD WYMAN CRABAPPLE), 1 3/4" CALIPER, TREE FORM, BALLED AND BURLAPPED | EACH | 1 | 0 | 1 |

ILLINOIS DEPARTMENT OF TRANSPORTATION
SUMMARY OF QUANTITIES

Rev.

| ROUTE | SECTION | COUNTY | TOTAL SHEETS | SHEET NUMBER |
|---------|-------------|---------|--------------|--------------|
| VARIOUS | 2006-035 LS | VARIOUS | 27 | 4 |

| PAY ITEM | DESCRIPTION | UNIT | URBAN Y003 100% STATE TOTAL | MCHD FUND | CONTRACT MAINT FUND |
|----------|----------------------------------------------------------------------------------------------------------------|--------|--------------------------------------|--------------|---------------------------|
| B2005414 | TREE, PRUNUS VIRGINIANA SCHUBERT (SCHUBERT CHOKEBERRY), 1 3/4" CALIPER, TREE FORM, BALLED AND BURLAPPED | EACH | 5 | 0 | 5 |
| B2005714 | TREE, PYRUS CALLERYANA CHANTICLEER (CHANTICLEER CALLERY PEAR), 1 3/4" CALIPER, TREE FORM, BALLED AND BURLAPPED | EACH | 2 | 0 | 2 |
| B2006112 | TREE, SYRINGA PEKINENSIS MORTON (CHINA SNOW PEKING LILAC), 1 1/2" CALIPER, TREE FORM, BALLED AND BURLAPPED | EACH | 25 | 0 | 25 |
| B2006214 | TREE, SYRINGA RETICULATA (JAPANESE TREE LILAC), 1 3/4" CALIPER, TREE FORM, BALLED AND BURLAPPED | EACH | 15 | 0 | 15 |
| C2005824 | SHRUB, RHUS AROMATICA GRO-LOW (GRO-LOW FRAGRANT SUMAC), 2' WIDTH, BALLED AND BURLAPPED | EACH | 12 | 0 | 12 |
| C2006136 | SHRUB, RHUS TYPHINA LACINIATA (CUTLEAF STAGHORN SUMAC), 3' HEIGHT, BALLED AND BURLAPPED | EACH | 5 | 5 | 0 |
| C2007224 | SHRUB, ROSA KNOCKOUT (KNOCKOUT ROSE), 24" HEIGHT, CONTAINER | EACH | 50 | 0 | 50 |
| C2017136 | SHRUB, VIBURNUM DENTATUM 'AUTUMN JAZZ' (AUTUMN JAZZ VIBURNUM), 3' HEIGHT, BALLED AND BURLAPPED | EACH | 30 | 0 | 30 |
| D2002160 | EVERGREEN, PICEA PUNGENS (COLORADO SPRUCE), 5' HEIGHT, BALLED AND BURLAPPED | EACH | 4 | 0 | 4 |
| D2002760 | EVERGREEN, PINUS NIGRA (AUSTRIAN PINE), 5' HEIGHT, BALLED AND BURLAPPED | EACH | 10 | 0 | 10 |
| D2003336 | EVERGREEN, TAXUS CUSPIDATA CAPITATA (UPRIGHT JAPANESE YEW), 3' HEIGHT, BALLED AND BURLAPPED | EACH | 25 | 0 | 25 |
| D2003524 | EVERGREEN, TAXUS X MEDIA DENSIFORMIS (DENSE ANGLOJAPANESE YEW), 2' WIDTH, BALLED AND BURLAPPED | EACH | 15 | 0 | 15 |
| K0026700 | TREE CARE | EACH | 300 | 0 | 300 |
| K0026810 | SHRUB CARE | EACH | 300 | 0 | 300 |
| K0026850 | PERENNIAL PLANT CARE | SQ YD | 2500 | 0 | 2500 |
| K1005481 | SHREDDED BARK MULCH 3" | SQ YD | 2132 | 0 | 2132 |
| X0301407 | PERENNIAL PLANTS, GALLON POT | UNIT | 26 | 0 | 26 |
| X0322856 | WEED CONTROL, NON-SELECTIVE AND NON-RESIDUAL | GALLON | 3.5 | 0 | 3.5 |
| X0322859 | WEED CONTROL, PRE-EMERGENT GRANULAR HERBICIDE | POUND | 125 | 25 | 100 |
| X0324097 | COARSE SAND PLACEMENT, 2" | SQ YD | 600 | 0 | 600 |
| X0325604 | WEED CONTROL, PRE-EMERGENT HERBICIDE | GALLON | 3 | 0 | 3 |
| B2003270 | TREE, MALUS DOLGO (DOLGO CRABAPPLE), 5' HEIGHT, MULTI-STEMMED, BALLED AND BURLAPPED | EACH | 13 | 3 | 10 |
| C2006626 | SHRUB, ROSA BLUSHING KNOCKOUT (BLUSHING KNOCKOUT), 18" HEIGHT, CONTAINER | EACH | 50 | 0 | 50 |

CONTRACT 60B91

ILLINOIS DEPARTMENT OF TRANSPORTATION
SUMMARY OF QUANTITIES
 Rev.

| ROUTE | SECTION | COUNTY | TOTAL SHEETS | SHEET NUMBER |
|---------|-------------|---------|--------------|--------------|
| VARIOUS | 2006-035 LS | VARIOUS | 27 | 5 |

CONTRACT 60B91



Landscaping Repair and Rehabilitation Work Order

Contract #: _____ W.O. Number: _____
 Date: _____ Claim Number: _____
 Route: _____ Location: _____

| Item | Unit | Quantity | Item | Unit | Quantity |
|------|------|----------|------|------|----------|
| | | | | | |
| | | | | | |
| | | | | | |
| | | | | | |
| | | | | | |
| | | | | | |
| | | | | | |
| | | | | | |
| | | | | | |
| | | | | | |

Special Instruction:

SAMPLE WORK ORDER
(NOT TRUE SIZE)

Prepared By: _____ Date repair work completed: _____

 Contractor Resident Engineer

MNT-LandScapeRepairAndRehabWorkOrder
 Rev(11/05)

ILLINOIS DEPARTMENT OF TRANSPORTATION

SAMPLE WORK ORDER

| ROUTE | SECTION | COUNTY | TOTAL SHEETS | SHEET NUMBER |
|---------|------------|---------|--------------|--------------|
| VARIOUS | 2006-035LS | VARIOUS | 27 | 6 |

CONTRACT 60B91

LOCATION SUMMARY

| COUNTY | CITY/TOWN | CLAIM # | SHEET # | GENERAL LOCATION |
|---------|--------------------|-------------------------|---------|----------------------------------------------------------------------------|
| LAKE | WADSWORTH | N/A | 7 | I-94 WEST / US 41 AT RUSSELL RD. |
| LAKE | CUBA TOWNSHIP | N/A | 8 | IL 59 @ CUBA RD. |
| COOK | ARLINGTON HEIGHTS | 721736 721743 722685 | 9 | IL 53: RAND RD. EXIT RAMP AND US 12 (RAND RD.) |
| COOK | SKOKIE | 722376 | 10 | I-94 WEST (EDENS EXPY) AT NILES CENTER RD. |
| COOK | CHICAGO | 722149 | 11 | I-90 EAST (JFK IB) BEFORE FOSTER AVE. |
| COOK | CHICAGO | N/A | 12 | I-90 WEST @ DIVERSEY EXIT RAMP AND @ BELMONT EXIT RAMP |
| COOK | CHICAGO | N/A | 13 | ARCHER AVE. @ THE CTA STATION AND @ THROOP ST. |
| COOK | OAK PARK | 722382 | 14 | I-290 WEST @ IDOT COMM CENTER (E/O EAST AVE.) |
| COOK | McCOOK | N/A | 15 | IDOT STEVENSON YARD @ JOLIET RD. AND IL 171 |
| COOK | HODGKINS | N/A | 16 | STEVENSON EXPY OB EXIT RAMP |
| COOK | PALOS PARK | N/A | 17 | US 45 (LAGRANGE RD.) & APPROX. 133 RD TO 132 ND STS. |
| COOK | TINLEY PARK | N/A | 18-19 | I-80 @ HARLEM AVE., SW QUADRANT |
| COOK | DIXMOOR | 722123 722665 | 20 | I-57 SB @ 147 TH ST ENTRANCE RAMP |
| COOK | COUNTRY CLUB HILLS | N/A | 21 | I-80 / I-57 INTERCHANGE |
| COOK | LYNWOOD | N/A | 22 | US 30 @ SAUK TRAIL |
| DUPAGE | ADDISON | N/A | 23 | I-290 @ IL 83 SW PERIMETER |
| WILL | JOLIET | 722671 | 24 | I-80 WB @ ENTRANCE RAMP |
| WILL | CHANNAHON | 721738 721758 | 25 | I-55 SB AND NORTH OF US 6 |
| DUPAGE | WEST CHICAGO | N/A | 25A | IL 59 AND IL 64 |
| VARIOUS | VARIOUS | N/A | 26 | VARIOUS LOCATIONS |
| | | | | |
| | | | | |
| | | | | |

ILLINOIS DEPARTMENT OF TRANSPORTATION
 LOCATION SUMMARY

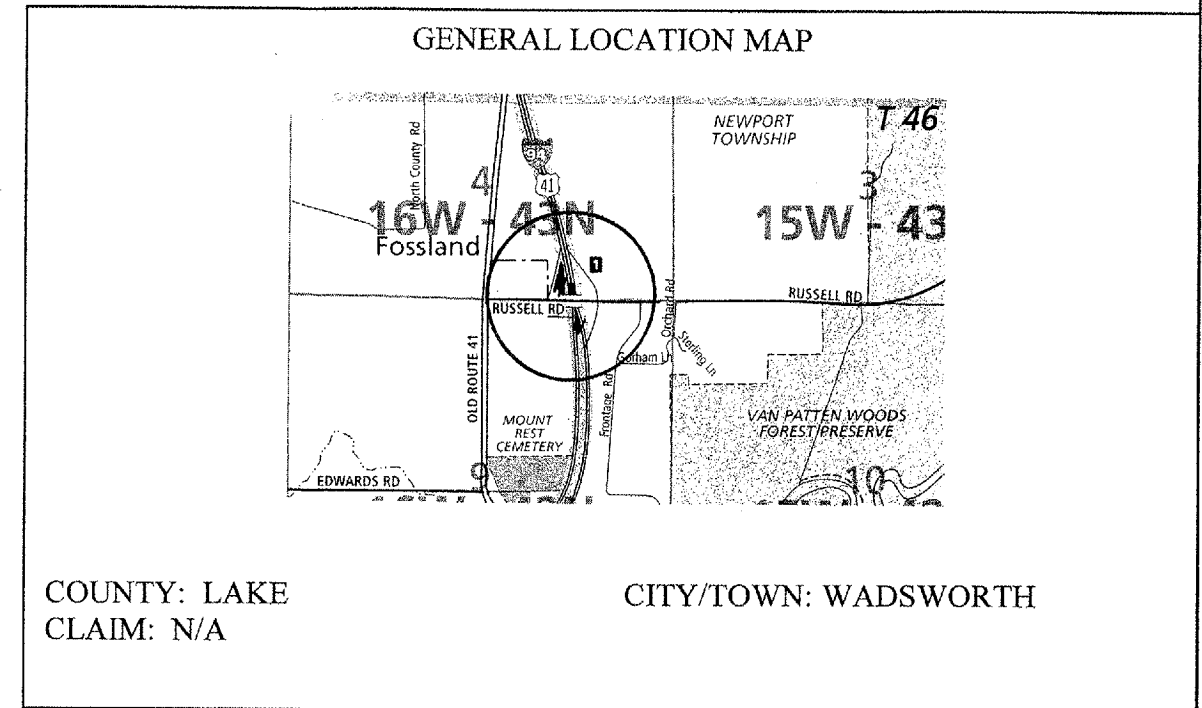
| ROUTE | SECTION | COUNTY | TOTAL SHEETS | SHEET NUMBER |
|---------|-------------|---------|--------------|--------------|
| VARIOUS | 2006-035 LS | VARIOUS | 27 | 7 |

CONTRACT 60B91

SCHEDULE OF LANDSCAPE ITEMS

| DESCRIPTION | QTY/UNIT |
|-----------------------------------------------------|-------------|
| WEED CONTROL, PRE-EMERGENT HERBICIDE | 0.25 GALLON |
| ROSA 'KNOCKOUT' KNOCKOUT ROSE | 50 EACH |
| PERENNIAL PLANTS, GALLON POT | 4.60 UNITS |
| <i>ANDROPOGON GERARDII</i> | 0.20 UNITS |
| <i>ANDROPOGON SCOPARIUS</i> | 0.20 UNITS |
| <i>ASCLEPIAS TUBEROSA</i> | 0.50 UNITS |
| <i>BAPTISIA AUSTRALIS</i> | 0.60 UNITS |
| <i>ECHINACEA PURPUREA 'MAGNUS'</i> | 1.00 UNITS |
| <i>LIATRIS ASPERA</i> | 0.50 UNITS |
| <i>PANICUM VIRGATUM 'SHENANDOAH'</i> | 0.60 UNITS |
| <i>RUDBECKIA FULGIDA 'GOLDSTURM'</i> | 1.00 UNITS |
| INTERSEEDING, CLASS 4A** | 6 ACRES |
| INTERSEEDING, CLASS 5A (MODIFIED)** | 6 ACRES |
| SHREDDED BARK MULCH | 1066 SQ YD |
| WEED CONTROL, NON-SELECTIVE AND NON-RESIDUAL | 0.25 GALLON |

**NOTE: INTERSEEDING WILL BE DONE AT THREE (3) DIFFERENT AREAS WITHIN THE EXPRESSWAY INTERCHANGE.



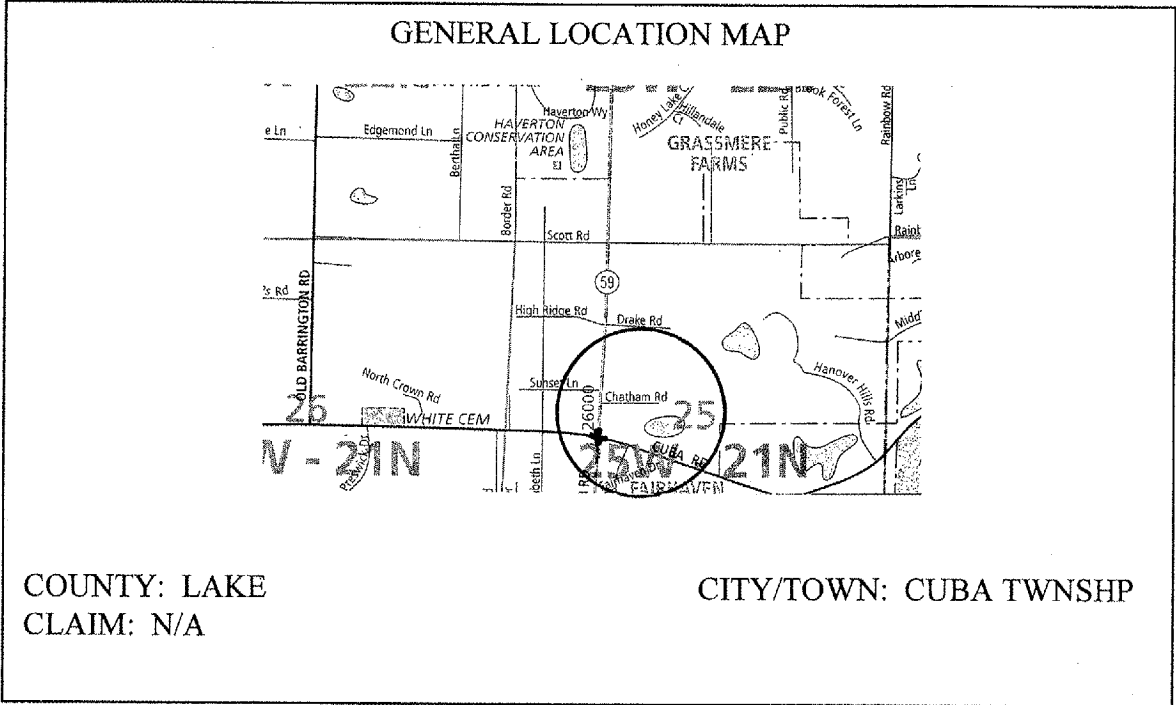
NOTIFY MELISSA DEL ROSARIO 72 HOURS PRIOR TO PLANTING AT (847) 705-4171 FOR LAYOUT.

ILLINOIS DEPARTMENT OF TRANSPORTATION
LANDSCAPE REPAIR LOCATION AND LAYOUT PLAN

| | | | | |
|--------------|----------------|---------------|---------------------|---------------------|
| ROUTE | SECTION | COUNTY | TOTAL SHEETS | SHEET NUMBER |
| VARIOUS | 2006-035 LS | VARIOUS | 27 | 8 |

CONTRACT 60B91

NOTIFY RICK WANNER 72 HOURS PRIOR TO PLANTING AT (847)705-4171 FOR LAYOUT.



SCHEDULE OF LANDSCAPE ITEMS

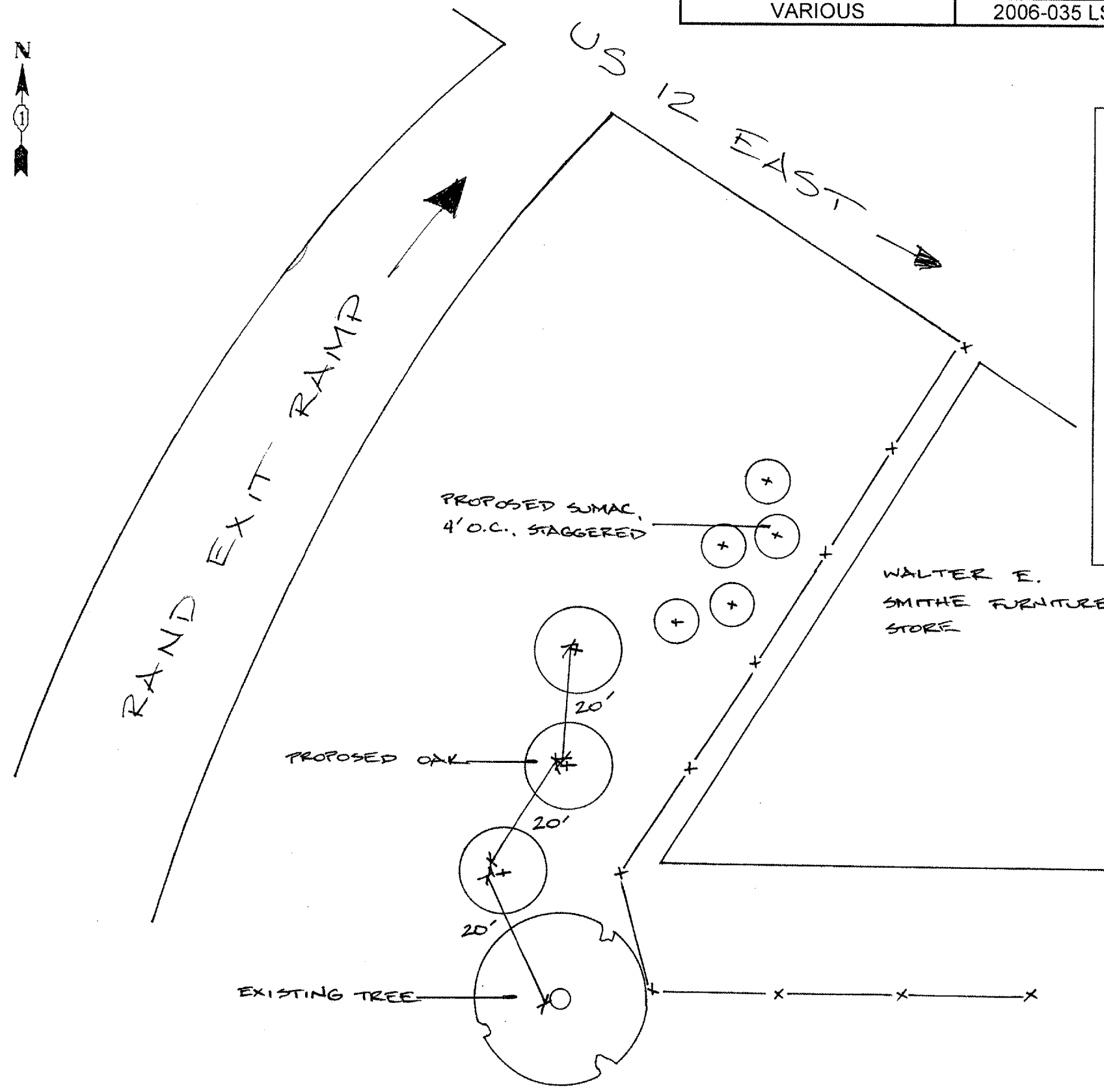
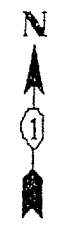
| DESCRIPTION | QTY/UNIT |
|---------------------------------------------------------------|----------|
| RHUS AROMATICA 'GRO-LOW' GRO-LOW FRAGRANT SUMAC | 12 EACH |
| TAXUS CUSPIDATA 'CAPITATA' UPRIGHT JAPANESE YEW | 25 EACH |
| TAXUS X MEDIA 'DENSIFORMIS' DENSE ANGLOJAPANESE YEW | 15 EACH |

ILLINOIS DEPARTMENT OF TRANSPORTATION

LANDSCAPE REPAIR LOCATION AND LAYOUT PLAN

| | | | | |
|---------|-------------|---------|--------------|--------------|
| ROUTE | SECTION | COUNTY | TOTAL SHEETS | SHEET NUMBER |
| VARIOUS | 2006-035 LS | VARIOUS | 27 | 9 |

CONTRACT 60B91



GENERAL LOCATION MAP

COUNTY: COOK
 CITY/TOWN: ARLINGTON HEIGHTS
 CLAIM #: 721736 721743 722685

SCHEDULE OF LANDSCAPE ITEMS

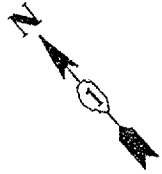
| DESCRIPTION | QTY/UNIT |
|--------------------------------------------------|----------|
| QUERCUS IMBRICARIA SHINGLE OAK | 3 EACH |
| RHUS TYPHINA LACINIATA CUTLEAF STAGHORN SUMAC | 5 EACH |

ILLINOIS DEPARTMENT OF TRANSPORTATION
 LANDSCAPE REPAIR LOCATION AND
 LAYOUT PLAN

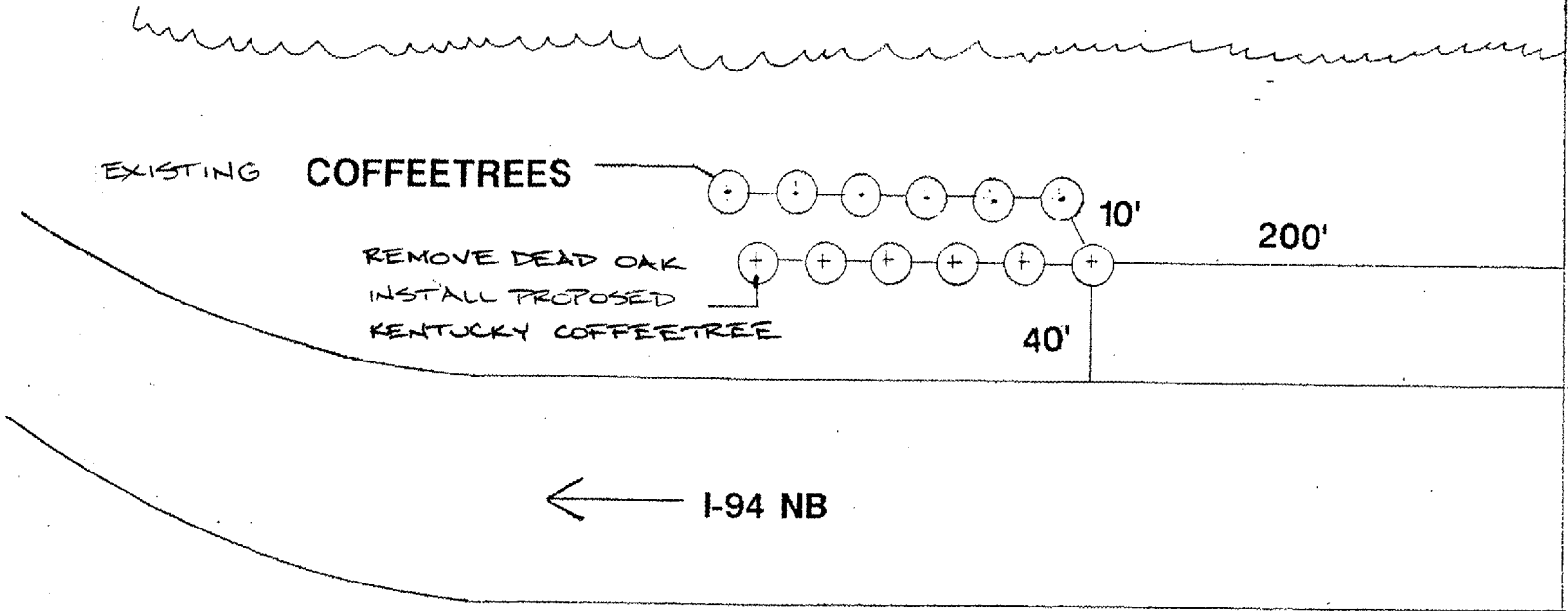
NOT DRAWN TO SCALE

| | | | | |
|---------|-------------|---------|--------------|--------------|
| ROUTE | SECTION | COUNTY | TOTAL SHEETS | SHEET NUMBER |
| VARIOUS | 2006-035 LS | VARIOUS | 27 | 10 |

CONTRACT 60B91



EXISTING VEGETATION



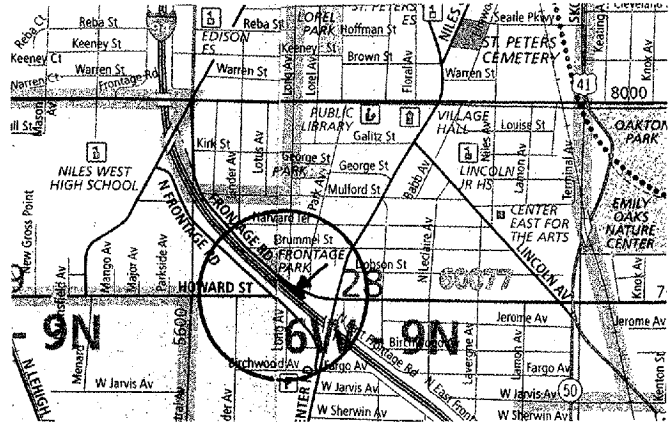
LP
39
11

FD3

NOT DRAWN TO SCALE

NILES CENTER RD

GENERAL LOCATION MAP



COUNTY: COOK
CLAIM #: 722376

CITY/TOWN: SKOKIE

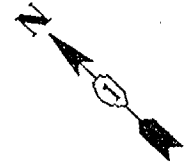
SCHEDULE OF LANDSCAPE ITEMS

| DESCRIPTION | QTY/UNIT |
|---------------------|----------|
| GYMNOCLADUS DIOICUS | |
| KENTUCKY COFFETREE | 1 EACH |

ILLINOIS DEPARTMENT OF TRANSPORTATION
LANDSCAPE REPAIR LOCATION AND LAYOUT PLAN

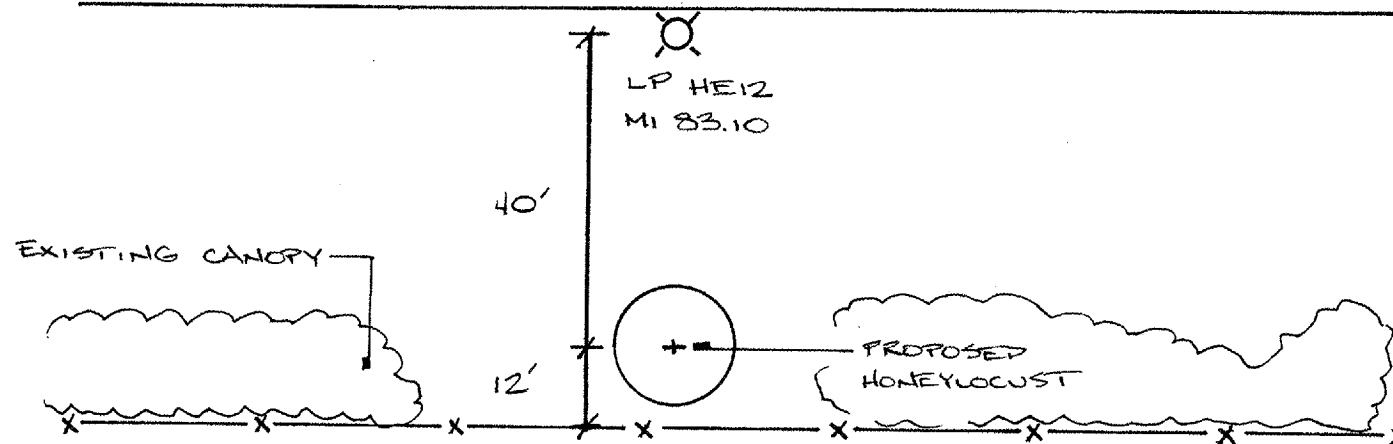
| | | | | |
|---------|-------------|---------|--------------|--------------|
| ROUTE | SECTION | COUNTY | TOTAL SHEETS | SHEET NUMBER |
| VARIOUS | 2006-035 LS | VARIOUS | 27 | 11 |

CONTRACT 60B91



I-90 JFK INBOUND →

FOSTER AVENUE



GENERAL LOCATION MAP

COUNTY: COOK
CLAIM #: 722149

CITY/TOWN: CHICAGO

SCHEDULE OF LANDSCAPE ITEMS

| DESCRIPTION | QTY/UNIT |
|-----------------------------------------------------|----------|
| GLEDITSIA TRIACANTHOS VAR. INERMIS 'SHADEMASTER' | |
| SHADEMASTER HONEYLOCUST | 1 EACH |

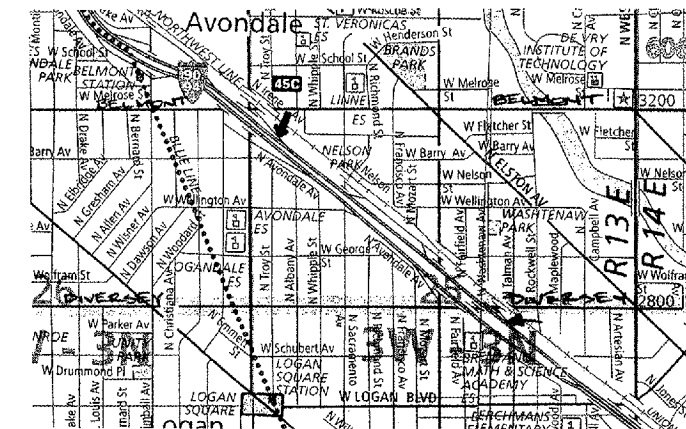
NOT DRAWN TO SCALE

ILLINOIS DEPARTMENT OF TRANSPORTATION
LANDSCAPE REPAIR LOCATION AND
LAYOUT PLAN

| ROUTE | SECTION | COUNTY | TOTAL SHEETS | SHEET NUMBER |
|---------|-------------|---------|--------------|--------------|
| VARIOUS | 2006-035 LS | VARIOUS | 27 | 12 |

CONTRACT 60B91

GENERAL LOCATION MAP



COUNTY: COOK
CLAIM: N/A

CITY/TOWN: CHICAGO

NOTIFY MELISSA DEL ROSARIO 72 HOURS PRIOR TO PLANTING AT (847) 705-4171 FOR LAYOUT. LOCATIONS ARE ALONG THE OUTBOUND KENNEDY (I-90 WEST).

SCHEDULE OF LANDSCAPE ITEMS

| DESCRIPTION | QTY/UNIT |
|----------------------------------------------------|----------|
| PORTABLE DRIP IRRIGATION SYSTEM | 20 EACH |
| PINUS HELDREICHII VAR. LEUCODERMIS BOSNIAN PINE | 10 EACH |
| PINUS KORAIENSIS KOREAN PINE | 10 EACH |

ILLINOIS DEPARTMENT OF TRANSPORTATION

LANDSCAPE REPAIR LOCATION AND LAYOUT PLAN

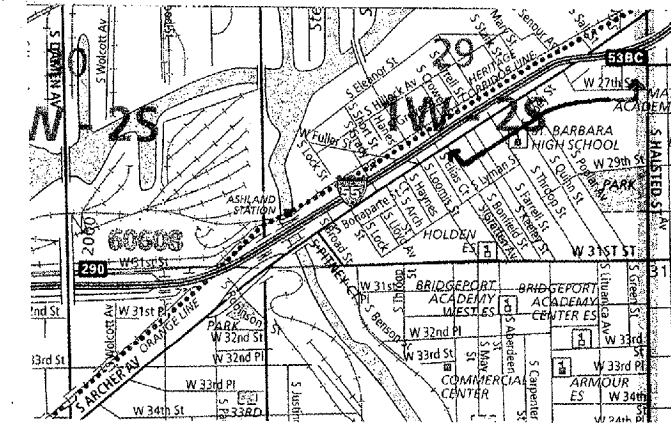
| | | | | |
|--------------|----------------|---------------|---------------------|---------------------|
| ROUTE | SECTION | COUNTY | TOTAL SHEETS | SHEET NUMBER |
| VARIOUS | 2006-035 LS | VARIOUS | 27 | 13 |

CONTRACT 60B91

SCHEDULE OF LANDSCAPE ITEMS

| DESCRIPTION | QTY/UNIT |
|------------------------------------------------------------------------|--------------|
| PORTABLE DRIP IRRIGATION SYSTEM | 60 EACH |
| ACER MIYABEI 'MORTON' STATE STREET MIYABE MAPLE | 10 EACH |
| CRATAEGUS CRUSGALLI VAR. INERMIS THORNLESS COCKSPUR HAWTHORN | 10 EACH |
| MALUS 'DOLGO' DOLGO CRABAPPLE | 10 EACH |
| QUERCUS IMBRICARIA SHINGLE OAK | 10 EACH |
| QUERCUS MACROCARPA BUR OAK | 10 EACH |
| SYRINGA PEKINENSIS 'MORTON' CHINA SNOW PEKING LILAC | 10 EACH |
| PERENNIAL PLANT CARE | 2500 SQ. YD. |
| SHRUB CARE | 300 EACH |
| TREE CARE | 300 EACH |
| WEED CONTROL, PRE-EMERGENT HERBICIDE | 0.5 GALLON |

GENERAL LOCATION MAP



COUNTY: COOK
CLAIM: N/A

CITY/TOWN: CHICAGO
(ALONG ARCHER AVENUE-
@ THE CTA STATION & @
THROOP ST.)

**NOTIFY FABIOLA QUIROZ 72 HOURS PRIOR TO
PLANTING AT (847) 705-4171 FOR LAYOUT.**

ILLINOIS DEPARTMENT OF TRANSPORTATION

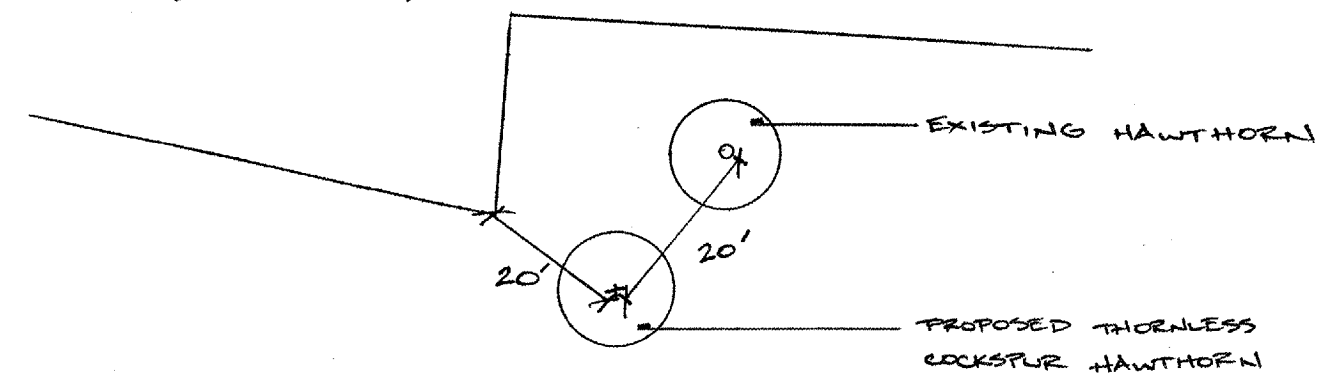
LANDSCAPE REPAIR LOCATION AND
LAYOUT PLAN

| | | | | |
|------------------|------------------------|-------------------|--------------------|--------------------|
| ROUTE VARIOUS | SECTION 2006-035 LS | COUNTY VARIOUS | TOTAL SHEETS 27 | SHEET NUMBER 14 |
|------------------|------------------------|-------------------|--------------------|--------------------|

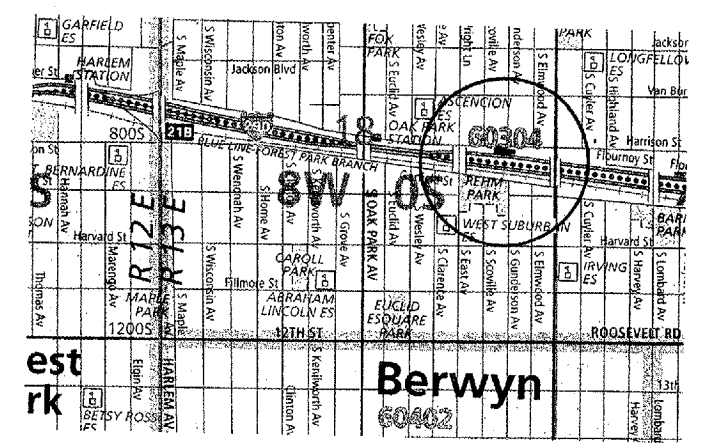
CONTRACT 60B91



IDOT COMM CENTER
(OAK PARK)

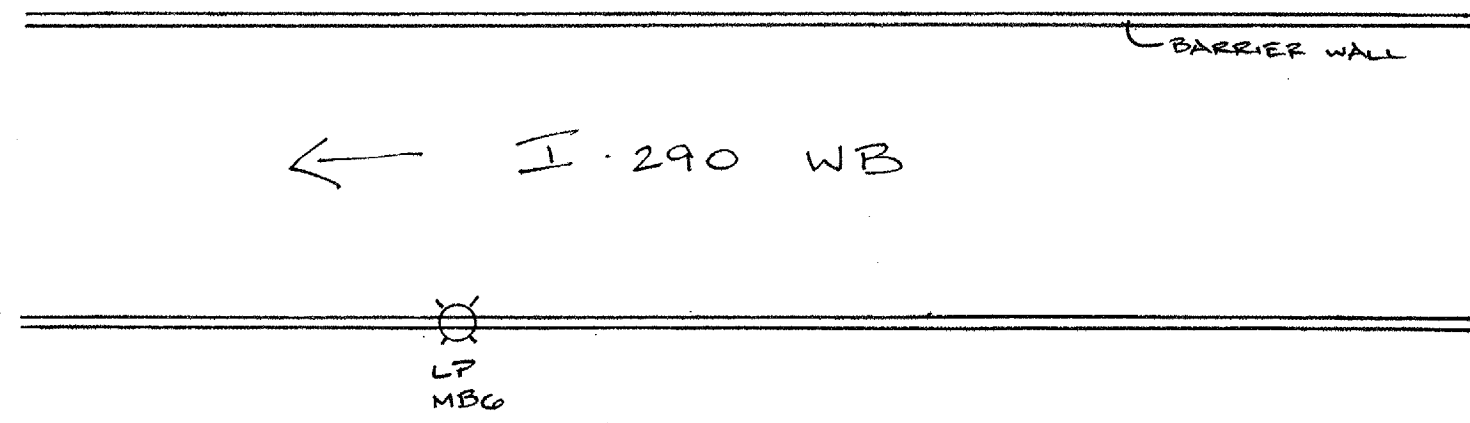


GENERAL LOCATION MAP



COUNTY: COOK
CLAIM #: 722382

CITY/TOWN: OAK PARK



| SCHEDULE OF LANDSCAPE ITEMS | |
|-----------------------------------------------------------------|----------|
| DESCRIPTION | QTY/UNIT |
| CRATAEGUS CRUSGALLI VAR. INERMIS THORNLESS COCKSPUR HAWTHORN | 1 EACH |

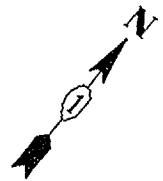
NOT DRAWN TO SCALE

ILLINOIS DEPARTMENT OF TRANSPORTATION
LANDSCAPE REPAIR LOCATION AND
LAYOUT PLAN

| | | | | |
|---------|-------------|---------|--------------|--------------|
| ROUTE | SECTION | COUNTY | TOTAL SHEETS | SHEET NUMBER |
| VARIOUS | 2006-035 LS | VARIOUS | 27 | 15 |

CONTRACT 60B91

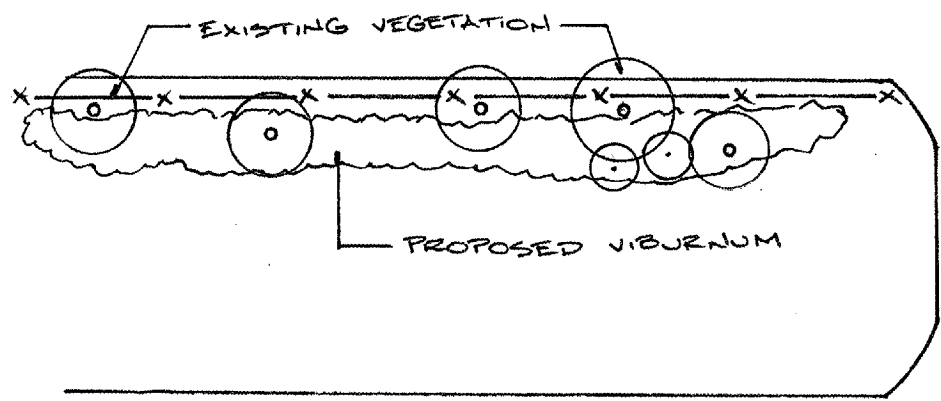
STEVENSON YARD
8630 JOLIET RD.
MCCOOK, IL 60525
COOK CTY.



GENERAL LOCATION MAP

COUNTY: COOK
CLAIM: N/A

CITY/TOWN: McCOOK



JOLIET RD.

SCHEDULE OF LANDSCAPE ITEMS

| DESCRIPTION | QTY/UNIT |
|---------------------------------|----------|
| VIBURNUM DENTATUM 'AUTUMN JAZZ' | |
| AUTUMN JAZZ VIBURNUM | 30 EACH |

NOT DRAWN TO SCALE

NOTIFY FABIOLA QUIROZ 72 HOURS PRIOR TO PLANTING AT (847)705-4171 FOR LAYOUT. THE ABOVE PLAN SHOWS ONLY A GENERAL LOCATION OF THE AREA TO BE PLANTED.

ILLINOIS DEPARTMENT OF TRANSPORTATION
LANDSCAPE REPAIR LOCATION AND LAYOUT PLAN

| | | | | |
|--------------|----------------|---------------|---------------------|---------------------|
| ROUTE | SECTION | COUNTY | TOTAL SHEETS | SHEET NUMBER |
| VARIOUS | 2006-035 LS | VARIOUS | 27 | 16 |

CONTRACT 60B91

NOTIFY FABIOLA QUIROZ 72 HOURS PRIOR TO PLANTING AT (847) 705-4171 FOR LAYOUT.

GENERAL LOCATION MAP

COUNTY: COOK
CLAIM: N/A

CITY/TOWN: HODGKINS

SCHEDULE OF LANDSCAPE ITEMS

| DESCRIPTION | QTY/UNIT |
|------------------------------------------------------------------------------------|----------|
| GLEDITSIA TRIACANTHOS VAR. INERMIS 'SHADEMASTER' SHADEMASTER HONEYLOCUST | 5 EACH |
| SYRINGA PEKINENSIS 'MORTON' CHINA SNOW PEKING LILAC | 5 EACH |

ILLINOIS DEPARTMENT OF TRANSPORTATION

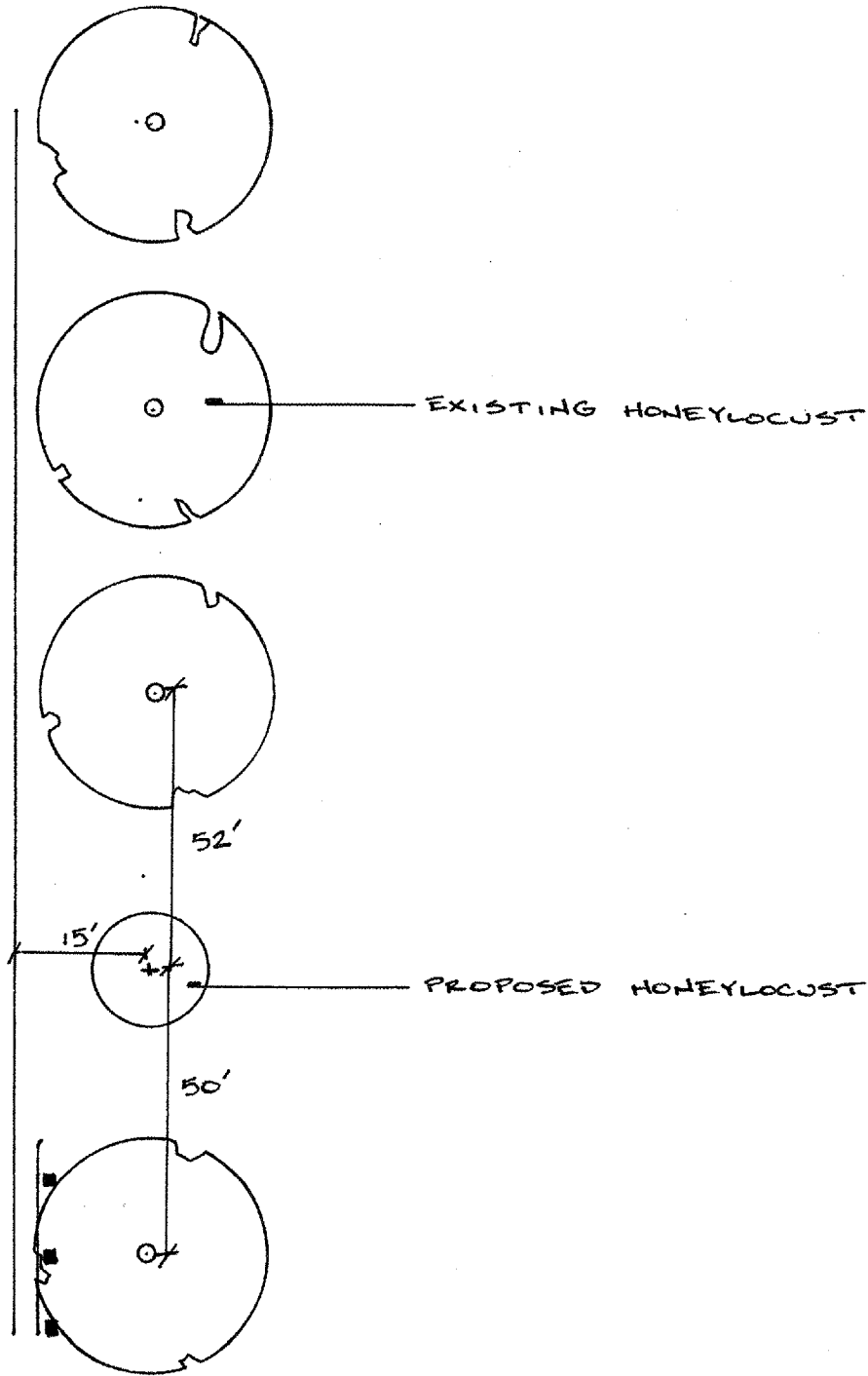
LANDSCAPE REPAIR LOCATION AND LAYOUT PLAN

| | | | | |
|---------|-------------|---------|--------------|--------------|
| ROUTE | SECTION | COUNTY | TOTAL SHEETS | SHEET NUMBER |
| VARIOUS | 2006-035 LS | VARIOUS | 27 | 17 |

CONTRACT 60B91

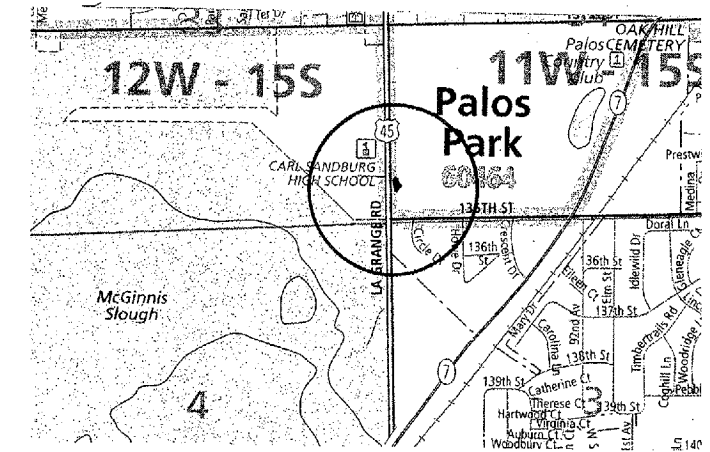


US 45 (LAGRANGE RD)



NOT DRAWN TO SCALE

GENERAL LOCATION MAP



COUNTY: COOK
CLAIM: N/A

CITY/TOWN: PALOS PARK

SCHEDULE OF LANDSCAPE ITEMS
DESCRIPTION QTY/UNIT

| | |
|--------------------------------------------------|--------|
| GLEDITSIA TRIACANTHOS VAR. INERMIS 'SHADEMASTER' | 1 EACH |
| SHADEMASTER HONEYLOCUST | 1 EACH |

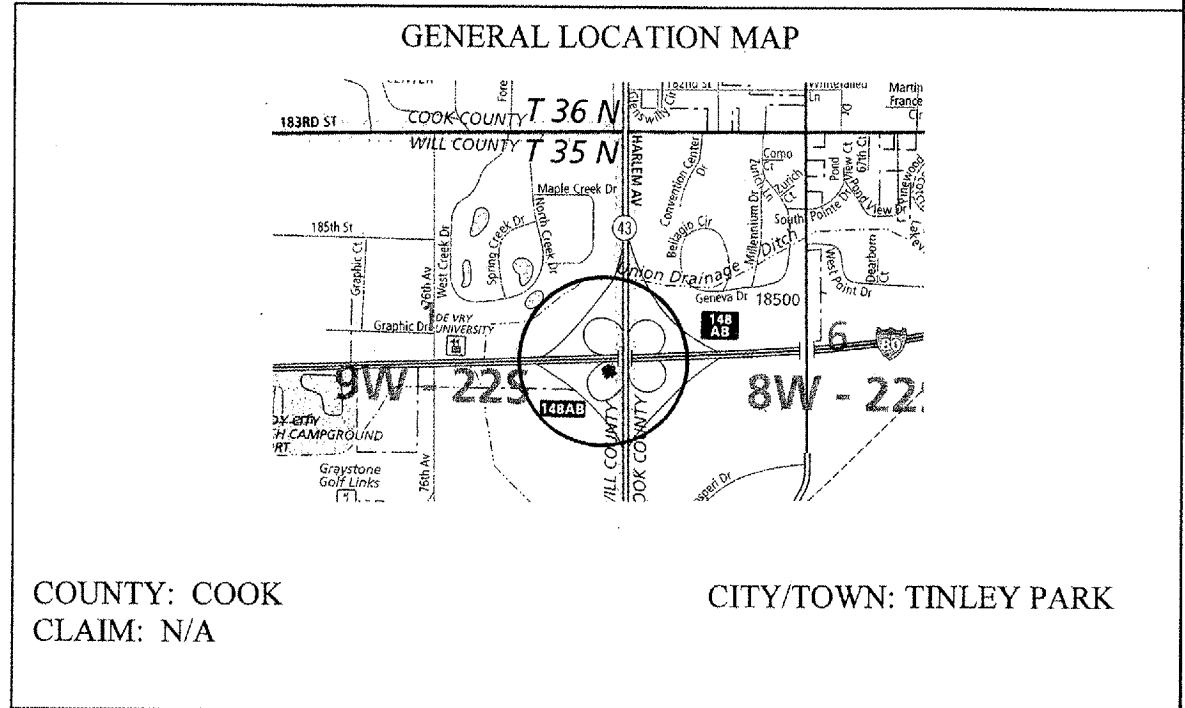
ILLINOIS DEPARTMENT OF TRANSPORTATION
LANDSCAPE REPAIR LOCATION AND LAYOUT PLAN

| ROUTE | SECTION | COUNTY | TOTAL SHEETS | SHEET NUMBER |
|---------|-------------|---------|--------------|--------------|
| VARIOUS | 2006-035 LS | VARIOUS | 27 | 18 |

CONTRACT 60B91

SCHEDULE OF LANDSCAPE ITEMS

| DESCRIPTION | QTY/UNIT |
|-----------------------------------------------------|--------------|
| WEED CONTROL, NON-SELECTIVE AND NON-RESIDUAL | 1 GALLON |
| WEED CONTROL, PRE-EMERGENT HERBICIDE | 0.125 GALLON |
| COARSE SAND PLACEMENT 2 | 300 SQ. YD. |
| PERENNIAL PLANTS, GALLON POT | 9.35 UNITS |
| <i>ANDROPOGON GERARDII</i> | 0.60 UNITS |
| <i>ANDROPOGON SCOPARIUS</i> | 0.75 UNITS |
| <i>ASCLEPIAS TUBEROSA</i> | 0.50 UNITS |
| <i>ASTER NOVAE-ANGLIAE 'ALMA POTSCHKE'</i> | 0.50 UNITS |
| <i>BAPTISIA AUSTRALIS</i> | 0.66 UNITS |
| <i>ECHINACEA PURPUREA 'MAGNUS'</i> | 2.00 UNITS |
| <i>RUDBECKIA FULGIDA 'GOLDSTURM'</i> | 4.00 UNITS |
| <i>SILPHIUM TEREBINTHINACEUM</i> | 0.34 UNITS |
| INTERSEEDING, CLASS 4A | 2 ACRES |
| INTERSEEDING, CLASS 5A (MODIFIED) | 2 ACRES |

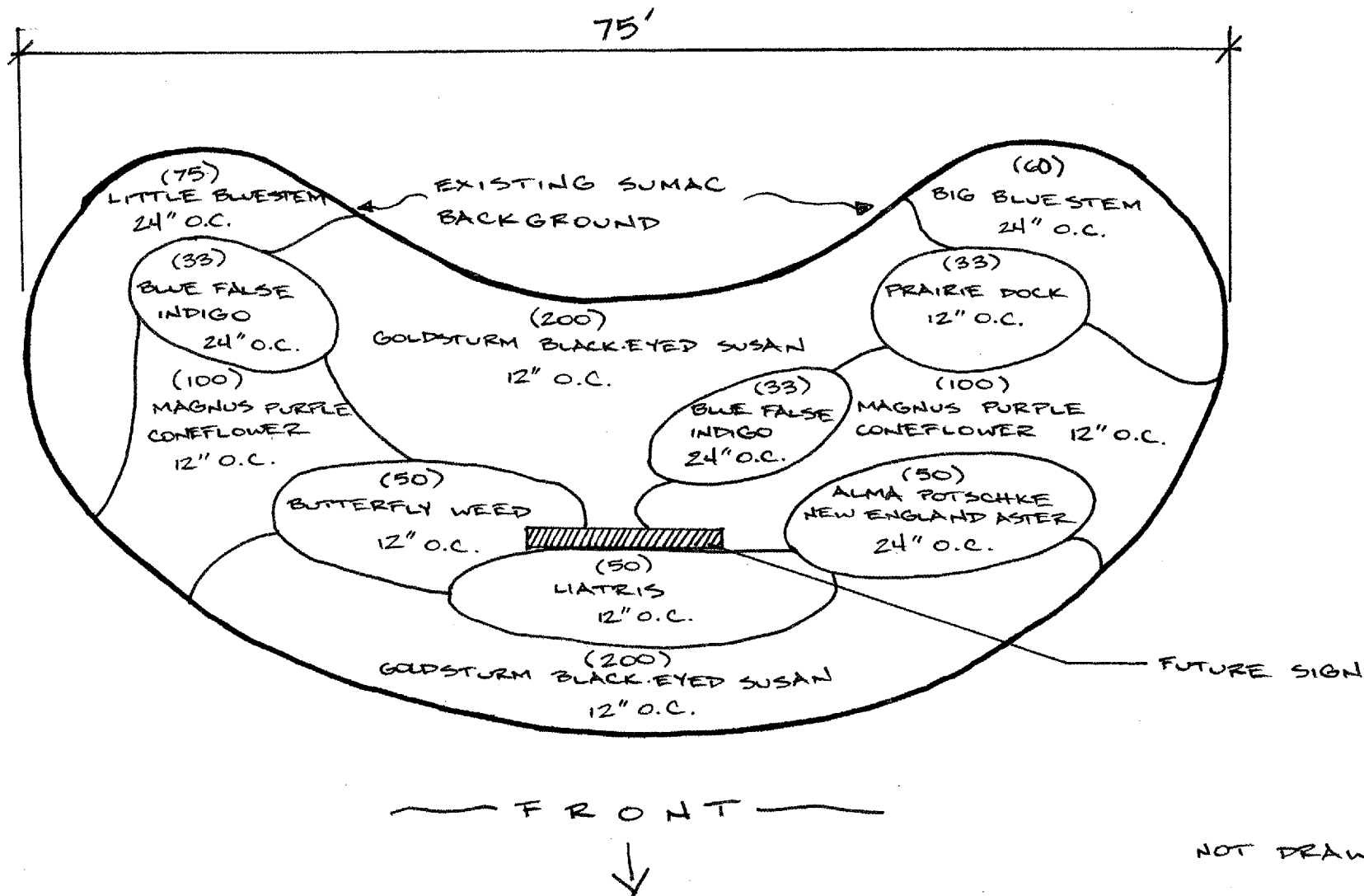


NOTIFY STEVE LIPKIE 72 HOURS PRIOR TO PLANTING AT (847) 705-4171 FOR LAYOUT. SEE NEXT PAGE FOR PLANT BED DESIGN.

ILLINOIS DEPARTMENT OF TRANSPORTATION
LANDSCAPE REPAIR LOCATION AND LAYOUT PLAN

| ROUTE | SECTION | COUNTY | TOTAL SHEETS | SHEET NUMBER |
|---------|-------------|---------|--------------|--------------|
| VARIOUS | 2006-035 LS | VARIOUS | 27 | 19 |

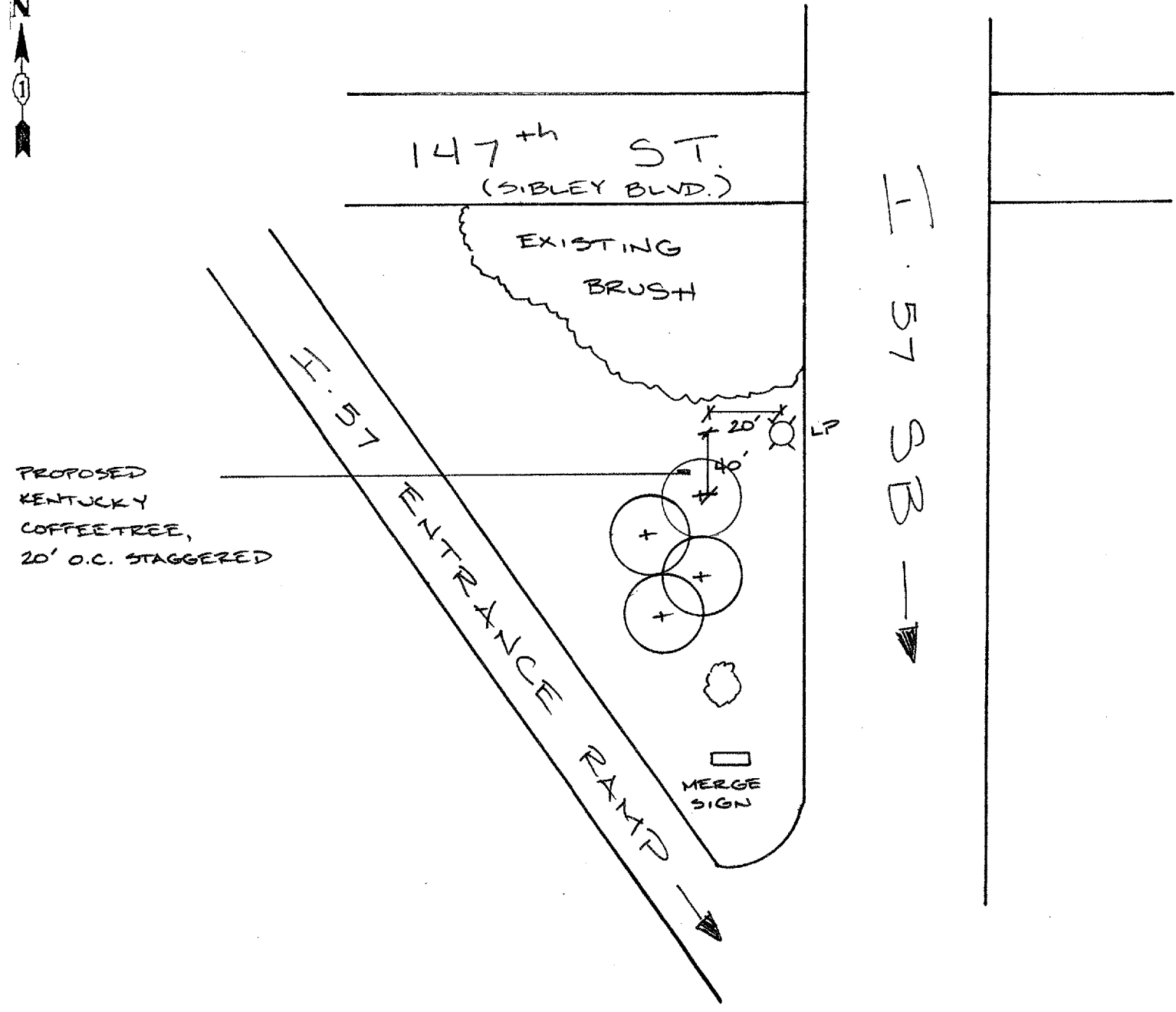
CONTRACT 60B91



ILLINOIS DEPARTMENT OF TRANSPORTATION
 LANDSCAPE REPAIR LOCATION AND
 LAYOUT PLAN

| | | | | |
|---------|-------------|---------|--------------|--------------|
| ROUTE | SECTION | COUNTY | TOTAL SHEETS | SHEET NUMBER |
| VARIOUS | 2006-035 LS | VARIOUS | 27 | 20 |

CONTRACT 60B91



GENERAL LOCATION MAP

COUNTY: COOK
 CLAIM #: 722123 722665

CITY/TOWN: DIXMOOR

SCHEDULE OF LANDSCAPE ITEMS

| DESCRIPTION | QTY/UNIT |
|---------------------|----------|
| GYMNOCLADUS DIOICUS | |
| KENTUCKY COFFEETREE | 4 EACH |

NOT DRAWN TO SCALE

ILLINOIS DEPARTMENT OF TRANSPORTATION
 LANDSCAPE REPAIR LOCATION AND
 LAYOUT PLAN

| ROUTE | SECTION | COUNTY | TOTAL SHEETS | SHEET NUMBER |
|---------|-------------|---------|--------------|--------------|
| VARIOUS | 2006-035 LS | VARIOUS | 27 | 21 |

CONTRACT 60B91

SCHEDULE OF LANDSCAPE ITEMS

| DESCRIPTION | QTY/UNIT |
|---------------------------------------------|-------------|
| WEED CONTROL, PRE-EMERGENT HERBICIDE | 0.25 GALLON |
| ROSA 'BLUSHING KNOCKOUT' | 50 EACH |
| PERENNIAL PLANTS, GALLON POT | 3.00 UNITS |
| <i>ASTER NOVAE-ANGLIAE 'ALMA POTSCHKE'</i> | 0.50 UNITS |
| <i>ECHINACEA PURPUREA 'MAGNUS'</i> | 0.50 UNITS |
| <i>HEMEROCALLIS 'STELLA D'ORO'</i> | 0.50 UNITS |
| <i>LIATRIS ASPERA</i> | 0.50 UNITS |
| <i>RUDBECKIA FULGIDA 'GOLDSTURM'</i> | 0.50 UNITS |
| <i>SILPHIUM LACINIATUM</i> | 0.50 UNITS |
| INTERSEEDING, CLASS 4A** | 4 ACRES |
| INTERSEEDING, CLASS 5A (MODIFIED)** | 8 ACRES |
| SHREDDED BARK MULCH | 1066 SQ YD |

**NOTE: INTERSEEDING WILL BE DONE AT TWO (2) DIFFERENT AREAS WITHIN THE EXPRESSWAY INTERCHANGE.

GENERAL LOCATION MAP

COUNTY: COOK
CLAIM: N/A

CITY/TOWN: COUNTRY CLUB HILLS

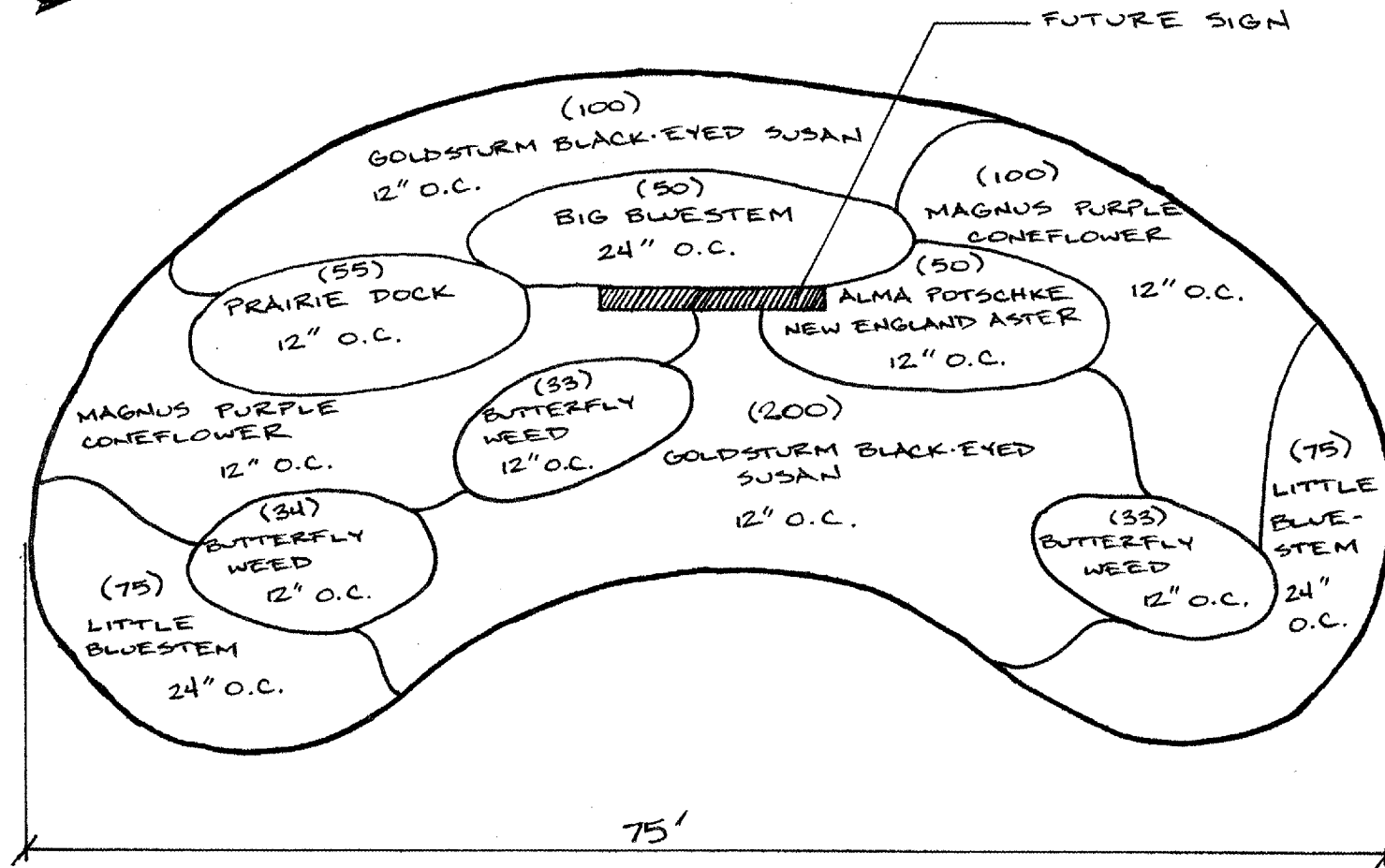
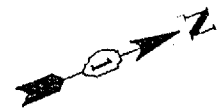
NOTIFY FABIOLA QUIROZ 72 HOURS PRIOR TO PLANTING AT (847) 705-4171 FOR LAYOUT.

ILLINOIS DEPARTMENT OF TRANSPORTATION

LANDSCAPE REPAIR LOCATION AND LAYOUT PLAN

| | | | | |
|---------|-------------|---------|--------------|--------------|
| ROUTE | SECTION | COUNTY | TOTAL SHEETS | SHEET NUMBER |
| VARIOUS | 2006-035 LS | VARIOUS | 27 | 22 |

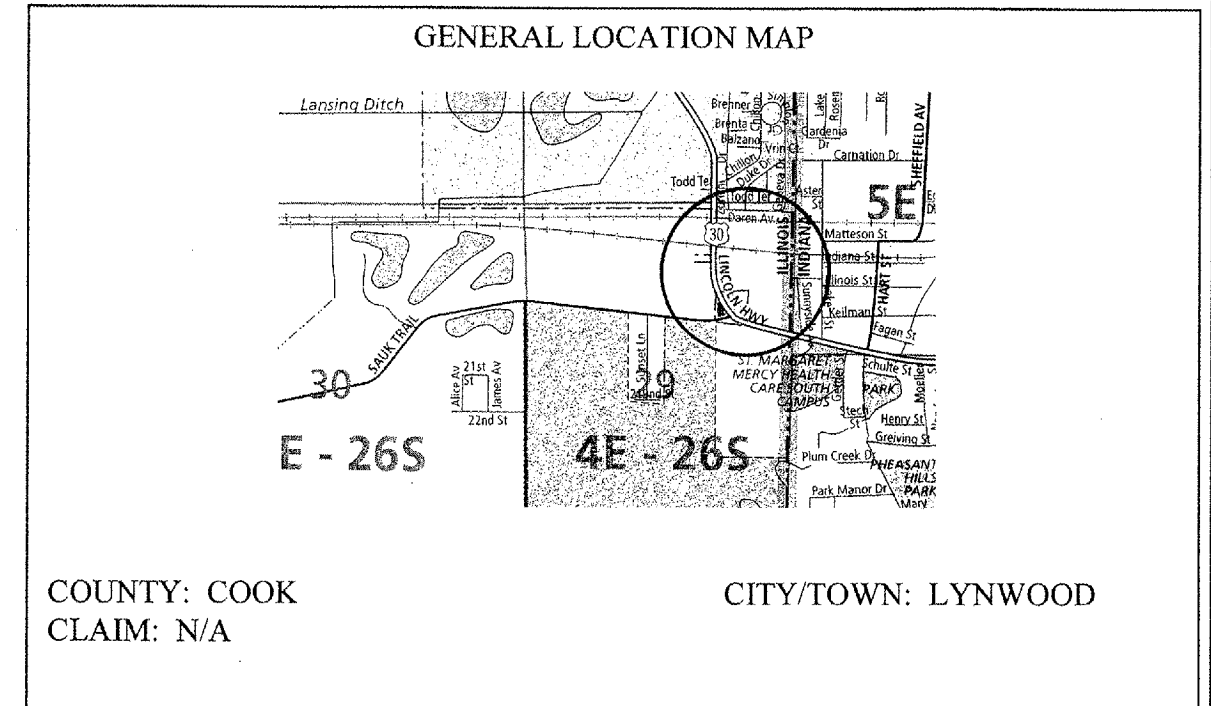
CONTRACT 60B91



FRONT
↓

NOT DRAWN TO SCALE

NOTIFY STEVE LIPKIE 72 HOURS PRIOR TO PLANTING AT (847) 705-4171 FOR LAYOUT.



SCHEDULE OF LANDSCAPE ITEMS

| DESCRIPTION | QTY/UNIT |
|----------------------------------------------|-------------|
| WEED CONTROL, NON-SELECTIVE AND NON-RESIDUAL | 1 GALLON |
| WEED CONTROL, PRE-EMERGENT HERBICIDE | 0.25 GALLON |
| COARSE SAND PLACEMENT 2 | 300 SQ. YD. |
| PERENNIAL PLANTS, GALLON POT | 9.05 UNITS |
| <i>ANDROPOGON GERARDII</i> | 0.50 UNITS |
| <i>ANDROPOGON SCOPARIUS</i> | 1.50 UNITS |
| <i>ASCLEPIAS TUBEROSA</i> | 1.00 UNITS |
| <i>ASTER NOVAE-ANGLIAE 'ALMA POTSCHE'</i> | 0.50 UNITS |
| <i>ECHINACEA PURPUREA 'MAGNUS'</i> | 2.00 UNITS |
| <i>RUDBECKIA FULGIDA 'GOLDSTURM'</i> | 3.00 UNITS |
| <i>SILPHIUM TEREBINTHACEUM</i> | 0.55 UNITS |

ILLINOIS DEPARTMENT OF TRANSPORTATION

LANDSCAPE REPAIR LOCATION AND LAYOUT PLAN

| | | | | |
|--------------|----------------|---------------|---------------------|---------------------|
| ROUTE | SECTION | COUNTY | TOTAL SHEETS | SHEET NUMBER |
| VARIOUS | 2006-035 LS | VARIOUS | 27 | 23 |

CONTRACT 60B91

NOTIFY RICK WANNER 72 HOURS PRIOR TO PLANTING AT (847)705-4171 FOR LAYOUT.

GENERAL LOCATION MAP

COUNTY: DUPAGE
CLAIM: N/A

CITY/TOWN: ADDISON

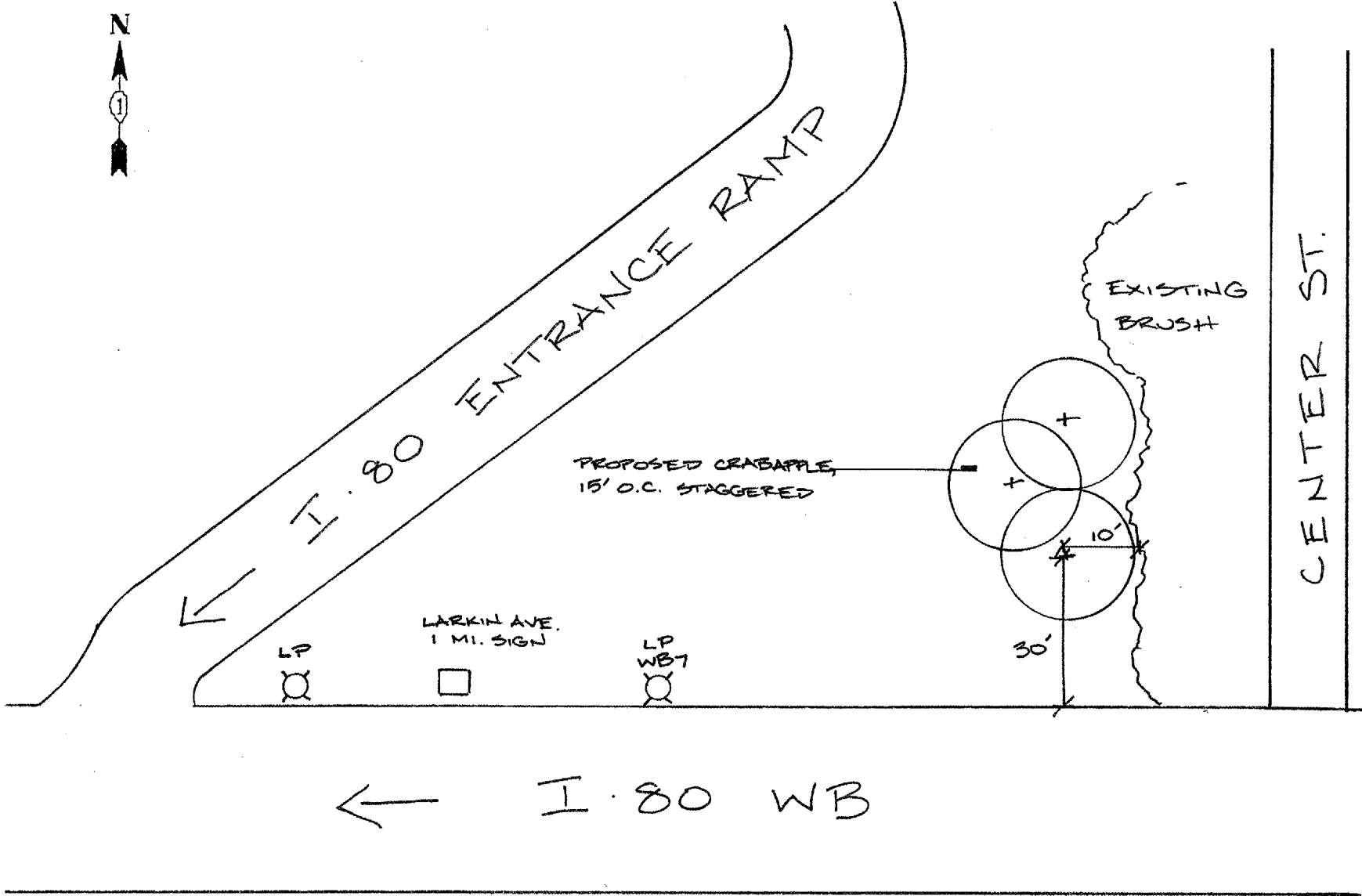
SCHEDULE OF LANDSCAPE ITEMS

| DESCRIPTION | QTY/UNIT |
|--------------------------------------------|----------|
| GYMNOCLADUS DIOICUS KENTUCKY COFFEETREE | 7 EACH |

ILLINOIS DEPARTMENT OF TRANSPORTATION
LANDSCAPE REPAIR LOCATION AND LAYOUT PLAN

| | | | | |
|---------|-------------|---------|--------------|--------------|
| ROUTE | SECTION | COUNTY | TOTAL SHEETS | SHEET NUMBER |
| VARIOUS | 2006-035 LS | VARIOUS | 27 | 24 |

CONTRACT 60B91



GENERAL LOCATION MAP

COUNTY: WILL
CLAIM #: 722671

CITY/TOWN: JOLIET

SCHEDULE OF LANDSCAPE ITEMS

| DESCRIPTION | QTY/UNIT |
|----------------------------------|----------|
| MALUS 'DOLGO' DOLGO CRABAPPLE | 3 EACH |

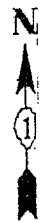
NOT DRAWN TO SCALE

ILLINOIS DEPARTMENT OF TRANSPORTATION

LANDSCAPE REPAIR LOCATION AND LAYOUT PLAN

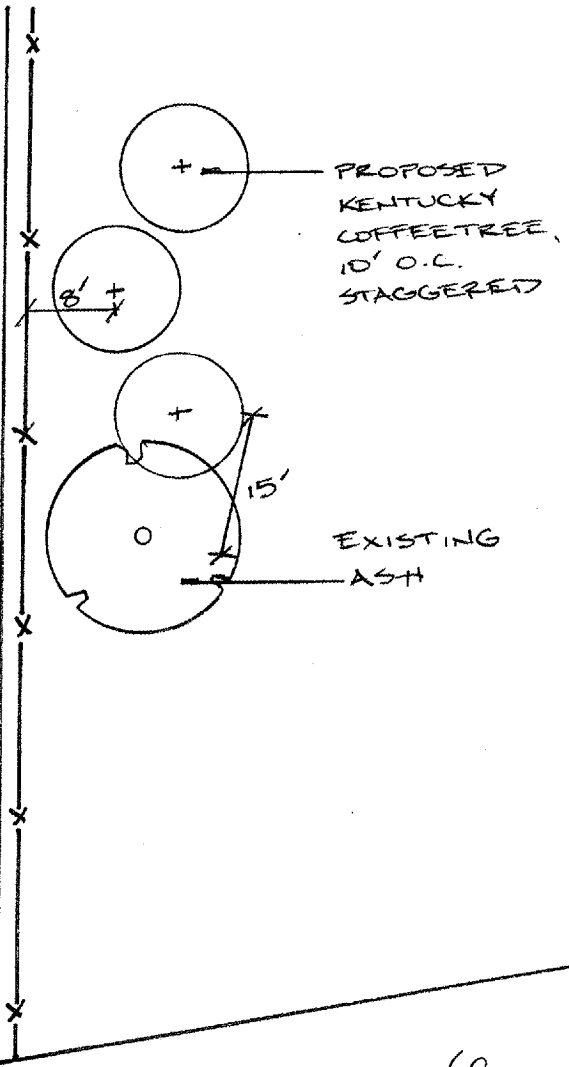
| | | | | |
|---------|-------------|---------|--------------|--------------|
| ROUTE | SECTION | COUNTY | TOTAL SHEETS | SHEET NUMBER |
| VARIOUS | 2006-035 LS | VARIOUS | 27 | 25 |

CONTRACT 60B91



SUNBELT RENTALS

FRONTAGE RD



I. 55 SB →

MI 249.59

MI 249.50

GENERAL LOCATION MAP

COUNTY: WILL
CLAIM #: 721738 721758

CITY/TOWN: CHANNAHON

SCHEDULE OF LANDSCAPE ITEMS

| DESCRIPTION | QTY/UNIT |
|---------------------|----------|
| GYMNOCLADUS DIOICUS | |
| KENTUCKY COFFEETREE | 3 EACH |

NOT DRAWN TO SCALE

ILLINOIS DEPARTMENT OF TRANSPORTATION
LANDSCAPE REPAIR LOCATION AND LAYOUT PLAN

| ROUTE | SECTION | COUNTY | TOTAL SHEETS | SHEET NUMBER |
|---------|-------------|---------|--------------|--------------|
| VARIOUS | 2006-035 LS | VARIOUS | 27 | 25A |

CONTRACT 60B91

SCHEDULE OF LANDSCAPE ITEMS
DESCRIPTION QTY/UNIT

| | |
|------------------------------------------------------------------------------------|---------|
| GLEDITSIA TRIACANTHOS VAR. INERMIS 'SHADEMASTER' SHADEMASTER HONEYLOCUST | 10 EACH |
| GLEDITSIA TRIACANTHOS VAR. INERMIS 'SKYLINE' SKYLINE HONEYLOCUST | 10 EACH |
| GYMNOCLADUS DIOICUS KENTUCKY COFFEETREE | 10 EACH |
| MALUS 'DONALD WYMAN' DONALD WYMAN CRABAPPLE | 1 EACH |
| PICEA PUNGENS COLORADO SPRUCE | 4 EACH |
| PYRUS CALLERYANA 'CHANTICLEER' CHANTICLEER CALLERY PEAR | 2 EACH |
| QUERCUS MACROCARPA BUR OAK | 2 EACH |
| SYRINGA RETICULATA JAPANESE TREE LILAC | 15 EACH |

NOTIFY RICK WANNER 72 HOURS PRIOR TO PLANTING AT (847) 705-4171 FOR LAYOUT.

GENERAL LOCATION MAP

COUNTY: DUPAGE CITY/TOWN: WEST CHICAGO
CLAIM: N/A

ILLINOIS DEPARTMENT OF TRANSPORTATION

LANDSCAPE REPAIR LOCATION AND LAYOUT PLAN

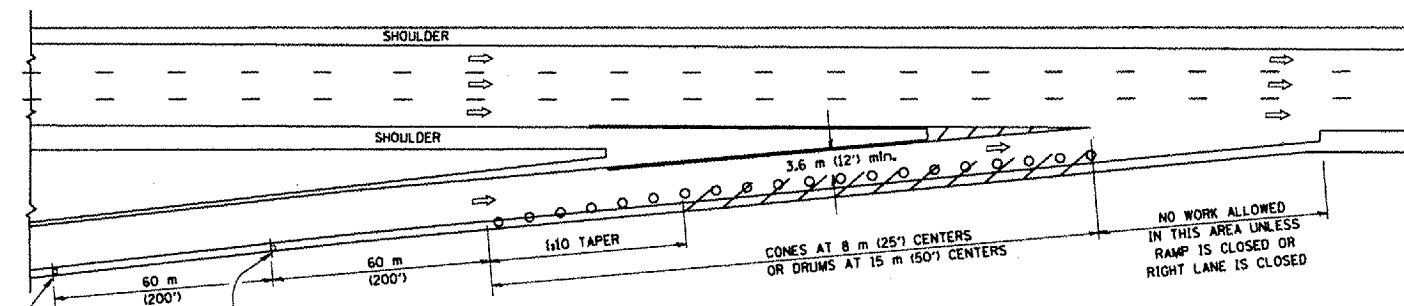
Rev.

PARTIAL RAMP CLOSURE DETAILS

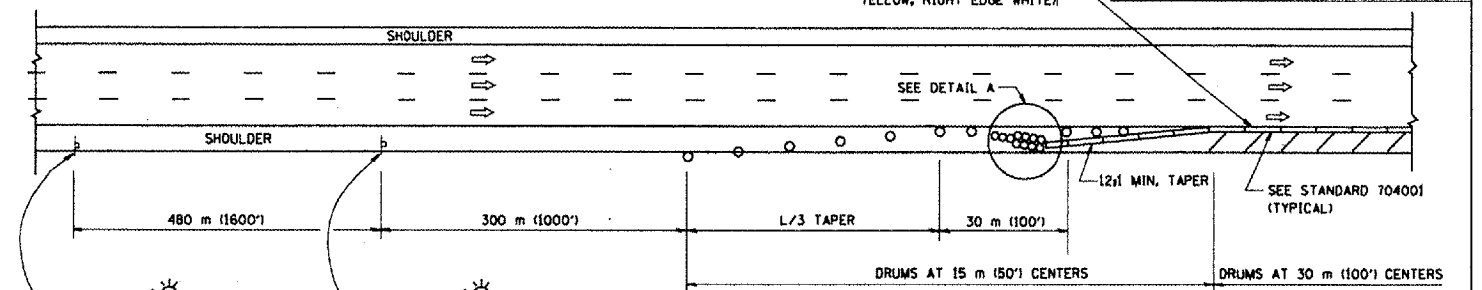
SHOULDER CLOSURE DETAILS

| | | | |
|---------------------|----------|------------------|--------------|
| F.A. RTE. | SECTION | COUNTY | TOTAL SHEETS |
| VAR2006-035LS | VARIOUS | | 27 |
| STA. | TO STA. | | |
| FED. ROAD DIST. NO. | ILLINOIS | FED. AID PROJECT | |

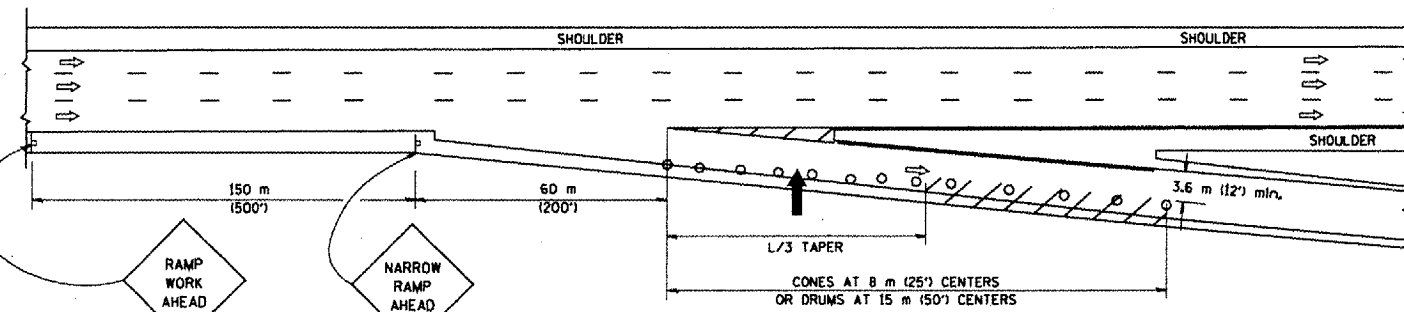
REFLECTIVE (50 (6) EDGE LINE ON LOWER SLOPE OF WALL (LEFT EDGE YELLOW, RIGHT EDGE WHITE)



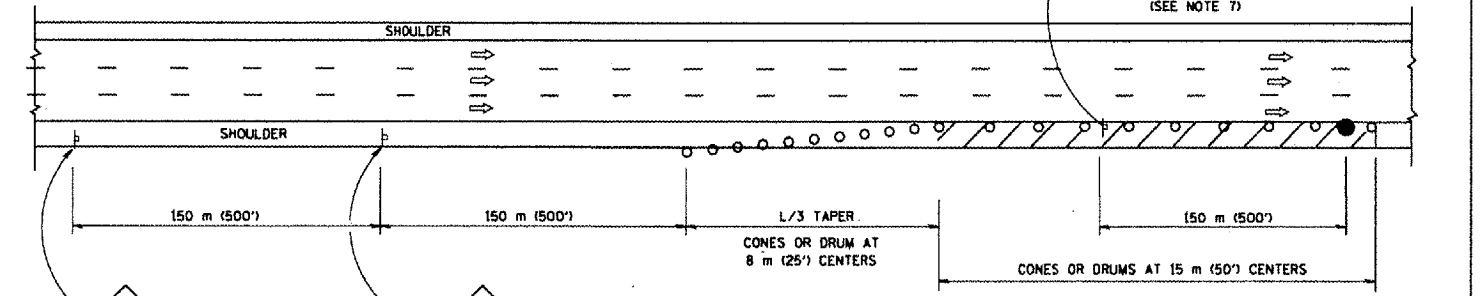
TYPICAL ENTRANCE RAMP



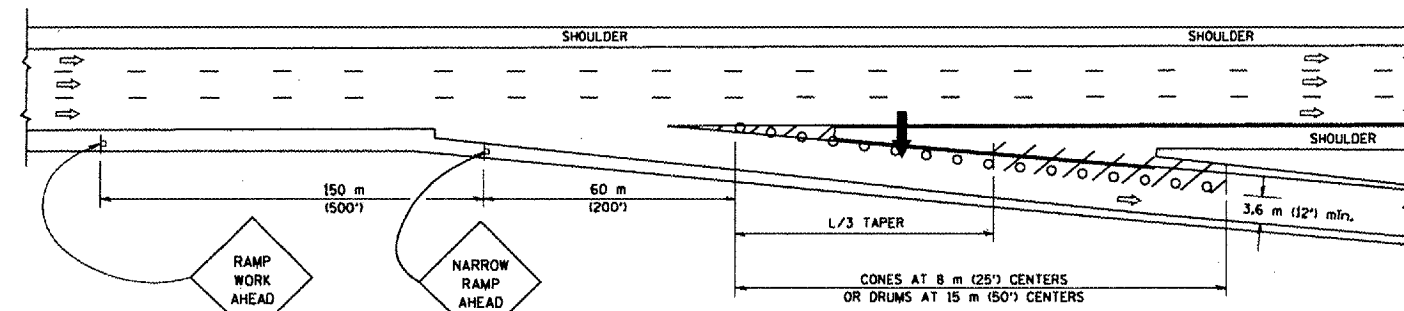
PERMANENT SHOULDER CLOSURE



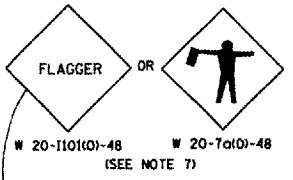
TYPICAL EXIT RAMP



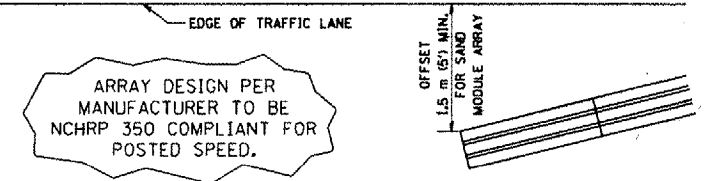
DAYTIME SHOULDER CLOSURE



TYPICAL EXIT RAMP



THIS DETAIL IS USED WHERE:
1. VEHICLES, EQUIPMENT, WORKERS OR THEIR ACTIVITIES ENCRDACH IN AN AREA CLOSER THAN 4.5 m (15') TO THE EDGE OF PAVEMENT FOR A PERIOD IN EXCESS OF 15 MINUTES.



ARRAY DESIGN PER MANUFACTURER TO BE NCHRP 350 COMPLIANT FOR POSTED SPEED.

DETAIL "A"
IMPACT ATTENUATOR, TEMPORARY
(SEE NOTE 5)

ALL DIMENSIONS ARE IN MILLIMETERS (INCHES) UNLESS OTHERWISE SHOWN.

SYMBOLS

- ARROWBOARD
- WORK AREA
- SIGN ON PORTABLE OR PERMANENT SUPPORT
- FLAGGER WITH CONTROL SIGN
- DRUM WITH MONO-DIRECTIONAL STEADY BURNING LIGHT
- CONES - 700 (28) IN HEIGHT

GENERAL NOTES

1. THE "L" DISTANCE EQUALS:
SPEED LIMIT FORMULAS
80 km/h (45 mph) METRIC ENGLISH
OR GREATER L=0.65(W/S) L=(W/S)
W = WIDTH OF OFFSET IN METERS (FEET)
S = NORMAL POSTED SPEED KM/H (MPH)
2. PLASTIC DRUMS WITH HIGH PERFORMANCE REFLECTIVE SHEETING AND STEADY BURNING LIGHTS ARE REQUIRED FOR ALL NIGHTTIME CLOSURES.
3. ALL SIGNS SHALL BE POST MOUNTED IF THE CLOSURE TIME EXCEEDS FOUR DAYS.
4. FLASHING LIGHTS SHALL BE USED DURING THE HOURS OF DARKNESS AND SHALL BE INSTALLED ABOVE THE FIRST TWO SETS OF SIGNS.

5. THE IMPACT ATTENUATOR, TEMPORARY IS NOT REQUIRED WHEN THE TEMPORARY CONCRETE BARRIER WALL IS PROTECTED BY OR IS TIED INTO THE EXISTING GUARDRAIL. IF OFFSET IS LESS THAN 5 FEET USE "TRAFFIC BARRIER TERMINAL, TYPE III, TEMPORARY" DEVICE TO MEET NCHRP350 FOR POSTED SPEED.
6. AUTHORIZATION FROM THE DISTRICT'S BUREAU OF TRAFFIC IS REQUIRED FOR ALL FREEWAY CLOSURES.
7. THE FLAGGER AND FLAGGER SIGN ARE REQUIRED AT THE ABOVE WORK SITES WHEN:
 - a. FOUR OR MORE WORK VEHICLES ENTER THE TRAFFIC LANES IN A ONE HOUR PERIOD.
 - b. THE WORK ACTIVITY REQUIRES FREQUENT ENCRDACHMENT INTO THE LANE OPEN TO TRAFFIC.
 THE FLAGGER SHALL BE STATIONED APPROXIMATELY 30 m (100') TO 60 m (200') IN ADVANCE OF THE WORKERS.

| REVISIONS | |
|-----------|-------|
| NAME | DATE |
| DWS | 11/96 |
| JAF | 12/02 |
| NCHRP 350 | 04/03 |
| JAF | 2/06 |
| | |
| | |
| | |
| | |

ILLINOIS DEPARTMENT OF TRANSPORTATION
TRAFFIC CONTROL DETAILS
FOR FREEWAY
SHOULDER CLOSURES
PARTIAL RAMP CLOSURES
DESIGNED BY: DWS
DRAWN BY
CHECKED BY
TC-17

SCALE: NONE
DATE: 3/1/2006

PLOT DATE: 3/1/2006
FILE NAME: N:\projects\60B91\60B91.dwg
PLOT SCALE: 1:1
USER NAME: jaf