

STATE OF ILLINOIS
DEPARTMENT OF TRANSPORTATION

ROUTE NO.	SECTION	COUNTY	SHEET NO.	SHEET NO.
		McHenry	12	4
FED. ROAD DIST. NO. 7	ILLINOIS	FED. AID PROJECT		

Contract Number: 60B96

GENERAL NOTES

Plan dimensions and details relative to existing plans are subject to routine variations. The Contractor shall field verify existing dimensions and details affecting new construction and make necessary approved adjustments prior to construction or ordering of materials. Such variations shall not be cause for additional compensation for a change in scope of the work, however, the Contractor will be paid for the quantity actually furnished based upon the unit price bid for the work.

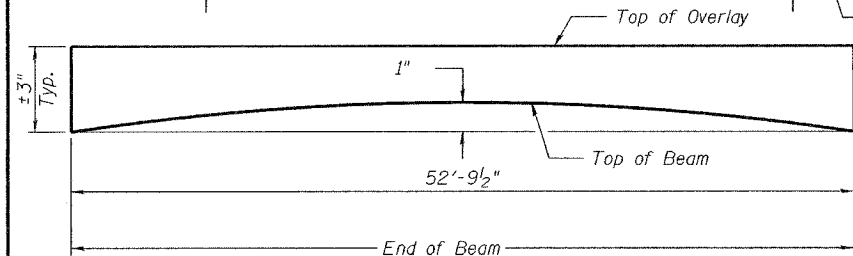
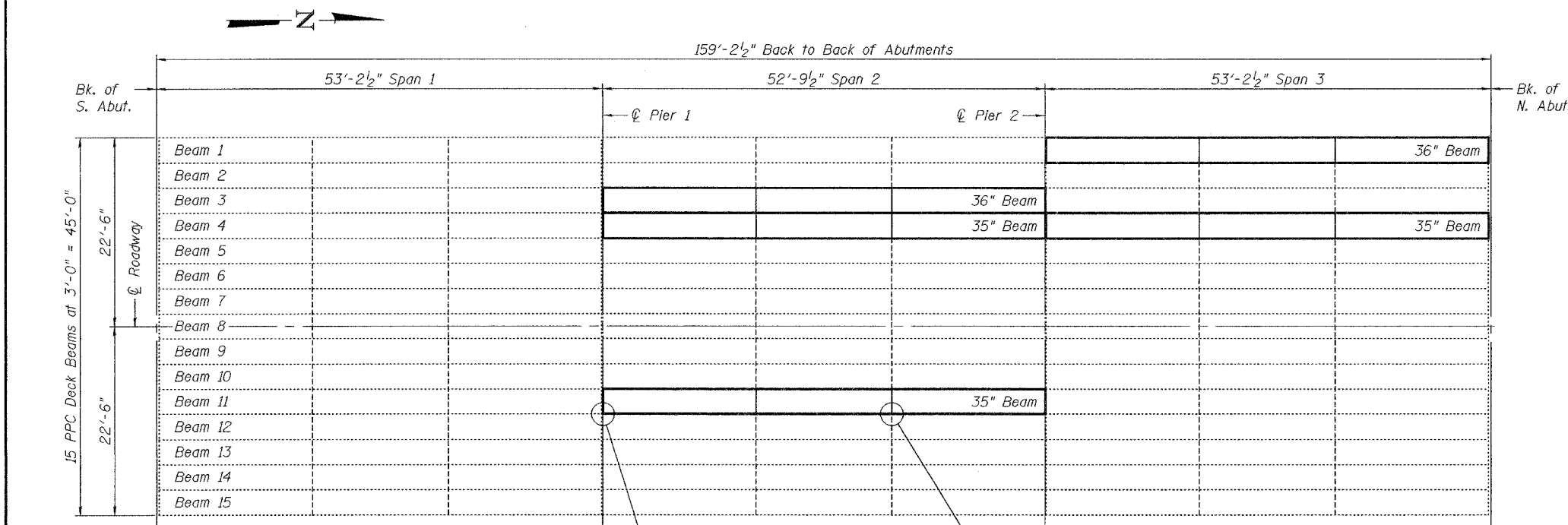
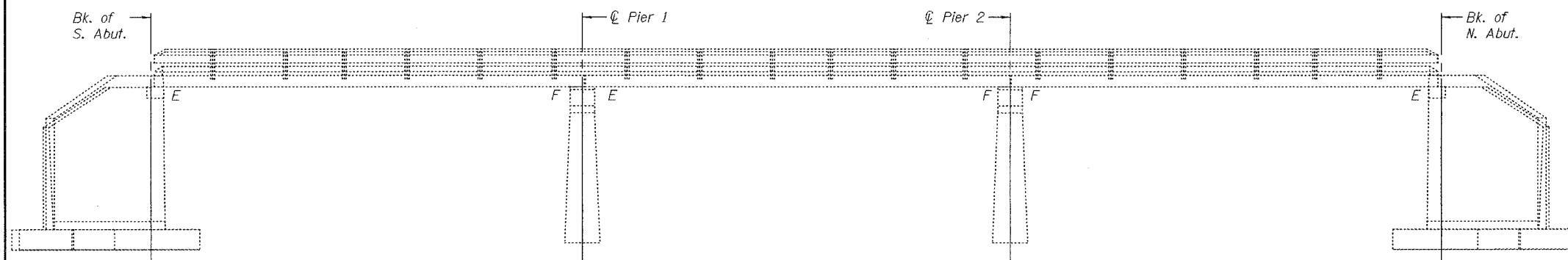
All structural steel shall be shop painted with the inorganic zinc rich primer per AASHTO M300, Type 1. Cost included with Furnishing and Erecting Structural Steel.

Any damage done to the bridge during beam removal shall be repaired by the Contractor. Cost to be included in the cost of Removal of Existing PPC Deck Beams.

The top surface of the beams shall be finished according to the IDOT Manual for Fabrication of Precast Prestressed Concrete Products.

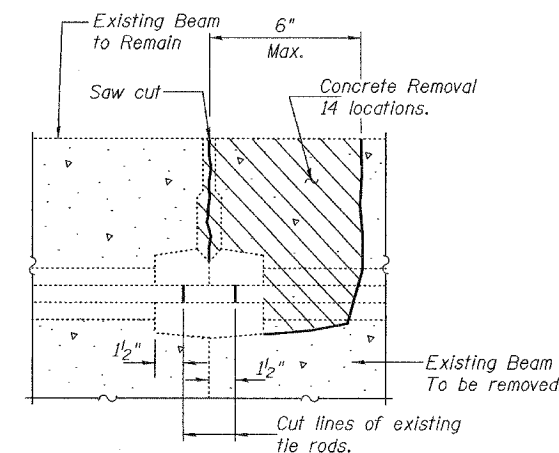
The cut strands at each beam end shall be given two coats of zinc dust spray or paint meeting the requirements of ASTM A780. The zinc dust spray or paint shall be applied before corrosion appears and allowed to dry according to manufacturer's specifications prior to another coat of zinc. A concrete sealer meeting the requirements of Section 587 of the Standard Specifications shall be applied to the exterior face and 9" in on the underside of each fascia beam. The sealer shall be applied after visible crack growth has subsided. This work shall be performed by the producer and included with the cost of the beam.

For quantities of Temporary Concrete Barrier, see Roadway Plans. If required to be anchored, temporary concrete barrier shall only be anchored into the overlay and not the PPC Deck Beams. Holes shall be patched with non-shrink material following relocation / removal of barrier. Cost included in Temporary Concrete Barrier.



Cut existing WT section flush with existing beam prior to removal at N. Abut. and Pier 1 (Typ.).

Existing tie rods to be cut (Typ.). See detail this sheet.



**DESIGN STRESSES
PRECAST UNITS**

$f'_c = 5,000$ psi
 $f'_{ct} = 4,000$ psi
 $f'_s = 270,000$ psi ($1/2"$ ϕ low lax strands)
 $f'_{sl} = 201,960$ psi ($1/2"$ ϕ low lax strands)

TOTAL BILL OF MATERIAL

ITEM	UNIT	QUANTITY
Precast Prestressed Concrete Deck Beams (27" Depth)	Sq. Ft.	770
Removal of Existing PPC Deck Beams	Sq. Ft.	791
HMA Surface Course Mix "D" N50	Tons	14.0
PC Mortar Fairing Course	Foot	418
Removing and Re-erecting Existing Railing	Foot	53
Silicone Joint Sealer	Foot	15
Furnishing and Erecting Structural Steel	Pound	479
Concrete Superstructure	Cu. Yd.	3.1
Reinforcement Bars Epoxy Coated	Pound	70
Asbestos Bearing Pad Removal	Each	5
Hot-Mix Asphalt Surface Removal	Sq. Yd.	20.6
Waterproofing Membrane System	Sq. Yd.	99

PLAN AND ELEVATION
F.A.P. RT. 324
MCHENRY COUNTY
SN 056-0010

DESIGNED	Victor H. Veliz
CHECKED	[Signature]
DRAWN	[Signature]
CHECKED	VHV ASB

EXAMINED	December 4, 2006
John A. Morris	ENGINEER OF STRUCTURAL SERVICES
PASSED	[Signature]
Ralph E. Anderson	ENGINEER OF BRIDGES AND STRUCTURES



Expires: November 30, 2008