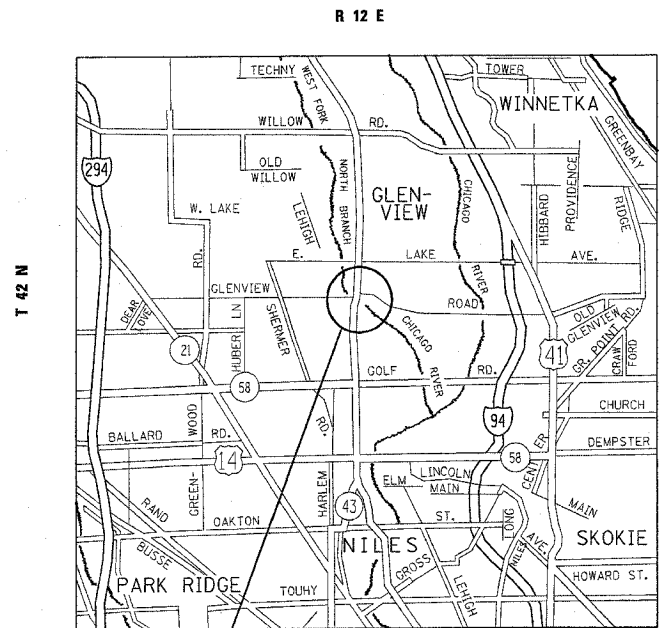
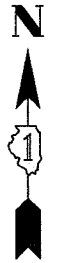


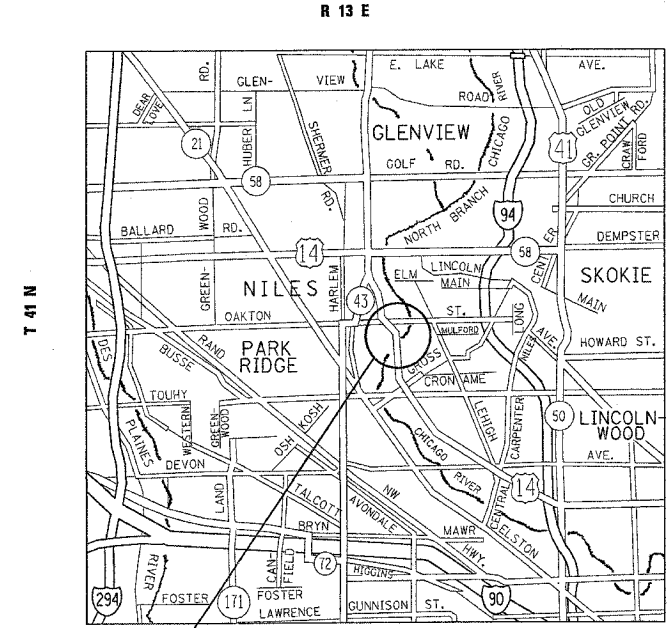
F.A. RTE.	SECTION	COUNTY	TOTAL SHEETS	SHEET NO.
VAR.	2003-0671	VARIOUS	23	4
STA.	TO STA.			
FED. ROAD DIST. NO.	ILLINOIS FED. AID PROJECT			



LOCATION 1 - COOK COUNTY  
STRUCTURE NUMBER: 016-0307

IL 43, WAUKEGAN ROAD  
OVER  
THE WEST FORK OF THE NORTH BRANCH OF THE CHICAGO RIVER  
LOCATED IN NORTHFIELD TOWNSHIP

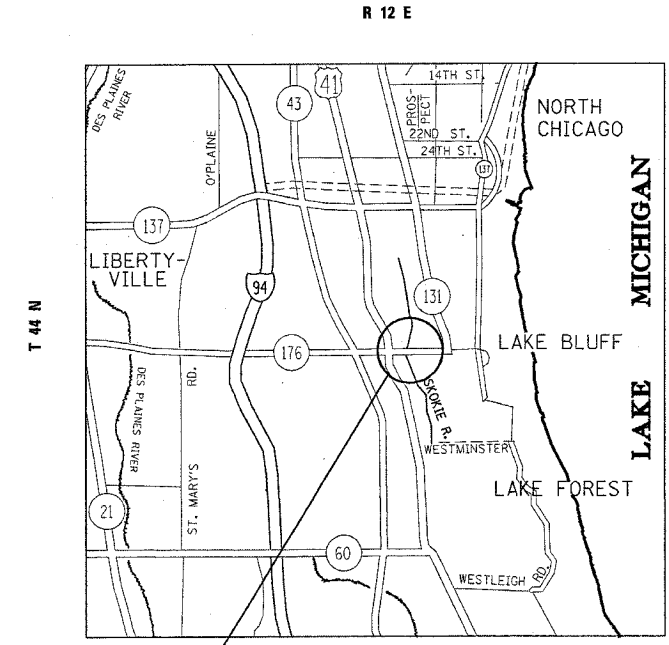
TRAFFIC DATA  
SPEED LIMIT = 40 MPH  
2005 ADT = 29,700



LOCATION 2 - COOK COUNTY  
STRUCTURE NUMBER: 016-0928

U.S. 14, CALDWELL AVENUE  
OVER  
THE NORTH BRANCH OF THE CHICAGO RIVER  
LOCATED IN NILES TOWNSHIP

TRAFFIC DATA  
SPEED LIMIT = 40 MPH  
2005 ADT = 19,200



LOCATION 3 - LAKE COUNTY  
STRUCTURE NUMBER: 049-0013

IL 176  
OVER  
THE EAST SKOKIE DITCH  
LOCATED IN SHIELDS TOWNSHIP

TRAFFIC DATA  
SPEED LIMIT = 40 MPH  
2005 ADT = 12,300

PLOT DATE = 10/25/2006  
FILE NAME = c:\projects\ad117183\design\site.dgn  
PLOT SCALE = 50.00000 / IN.  
USER NAME = mmhkl

REVISIONS	
NAME	DATE

ILLINOIS DEPARTMENT OF TRANSPORTATION

**LOCATION MAPS**

SCALE: VERT.  
HORIZ.  
DATE

DRAWN BY  
CHECKED BY