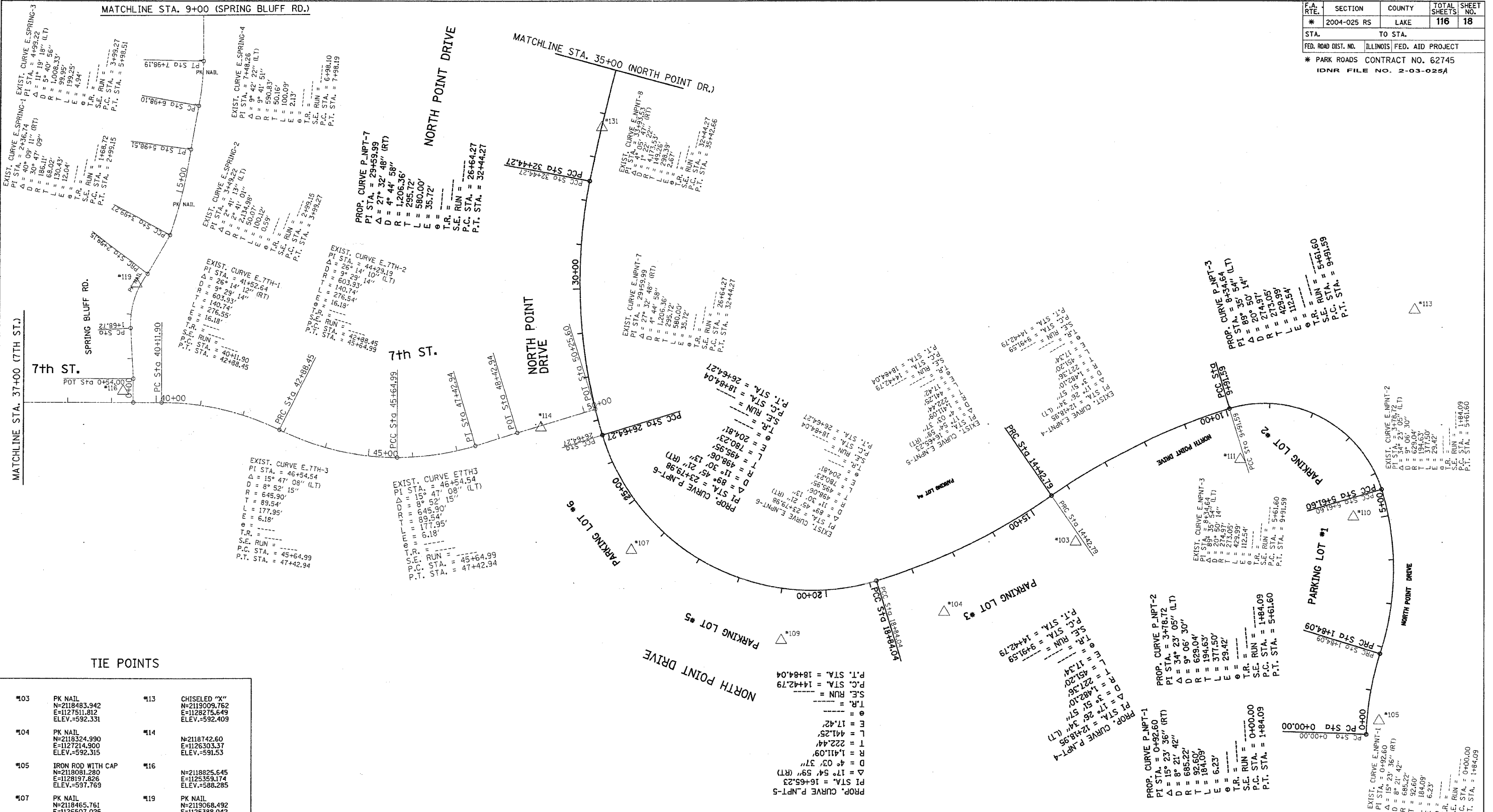


F.A. RTE.	SECTION	COUNTY	TOTAL SHEETS	SHEET NO.
*	2004-025 RS	LAKE	116	18
STA.		TO STA.		
FED. ROAD DIST. NO.		ILLINOIS FED. AID PROJECT		
* PARK ROADS CONTRACT NO. 62745				
IDNR FILE NO. 2-03-025A				



**TIE POINTS**

103	PK NAIL N=2118483.942 E=1127511.812 ELEV.=592.331	113	CHISELED "X" N=2119009.762 E=1128275.649 ELEV.=592.409
104	PK NAIL N=2118324.990 E=1127214.900 ELEV.=592.315	114	N=2118742.60 E=1126303.37 ELEV.=591.53
105	IRON ROD WITH CAP N=2118081.280 E=1128197.826 ELEV.=597.769	116	N=2118825.645 E=1125359.174 ELEV.=588.285
107	PK NAIL N=2118465.761 E=1126507.025 ELEV.=592.050	119	PK NAIL N=2119068.492 E=1125368.042 ELEV.=589.111
109	PK NAIL N=2118261.428 E=1126846.395 ELEV.=591.627	121	N=2119420.118 E=1126438.665 ELEV.=591.222
110	PK NAIL N=2118540.909 E=1128140.476 ELEV.=594.700		
111	PK NAIL N=2118670.621 E=1127885.646 ELEV.=593.917		

REVISIONS	
NAME	DATE

ILLINOIS DEPARTMENT OF TRANSPORTATION

**NORTH POINT MARINA ALIGNMENT AND TIES**

SCALE: VERT. \_\_\_\_\_  
 HORIZ. \_\_\_\_\_

DATE \_\_\_\_\_

DRAWN BY \_\_\_\_\_  
 CHECKED BY \_\_\_\_\_

PLOT DATE = 1/4/2006  
 PLOT SCALE = 1"=40'  
 USER NAME = drivekaseg