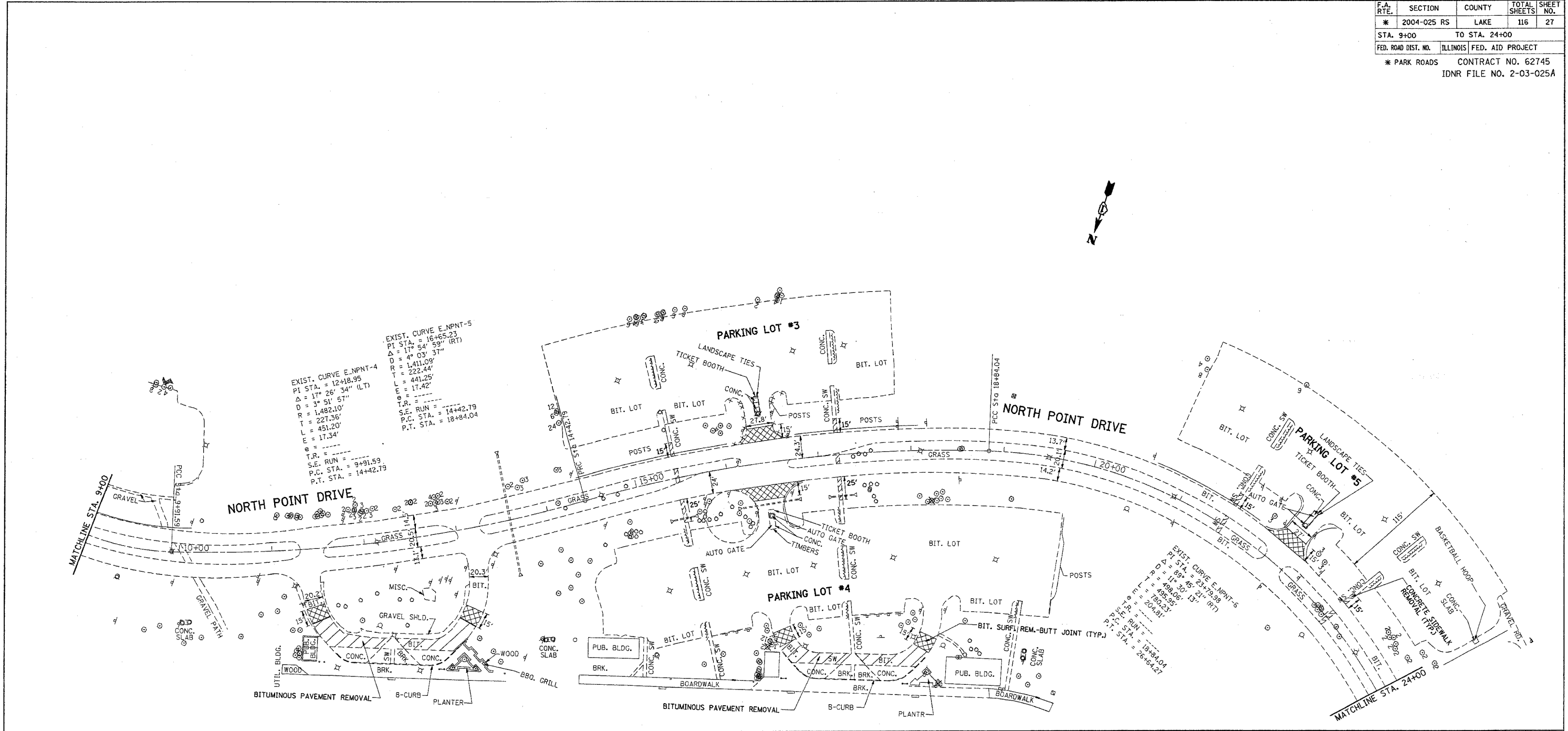


*REF-topnpt2
*REF-plnpt2

F.A. RTE.	SECTION	COUNTY	TOTAL SHEETS	SHEET NO.
* 2004-025 RS	LAKE		116	27
STA. 9+00		TO STA. 24+00		
FED. ROAD DIST. NO.		ILLINOIS FED. AID PROJECT		
* PARK ROADS		CONTRACT NO. 62745		
		IDNR FILE NO. 2-03-025A		

PLAN	DATE
SUBMITTED	
PLANNED	
NOTED	
BY	

PROFILE	DATE
SURVEYED	
NOTED	
BY	



EXIST. C. PROF. CHAIN "NORTH POINT DR. (FORMERLY CLAD)" (SOUTHEAST MOST RD.)	
595	595
590	590
585	585
580	580
594.71	591.59
593.84	592.08
592.94	
592.03	
591.12	
589.87	
591.09	
591.09	
591.45	
592.20	
592.83	
592.59	
591.97	
591.51	
9+00	24+00

EXIST. ROADWAY PLAN
NORTH POINT MARINA
NORTH POINT DR.
SCALE: VERT. 5
HORIZ. 50
DRAWN BY: CAD
DATE: 1/24/2006