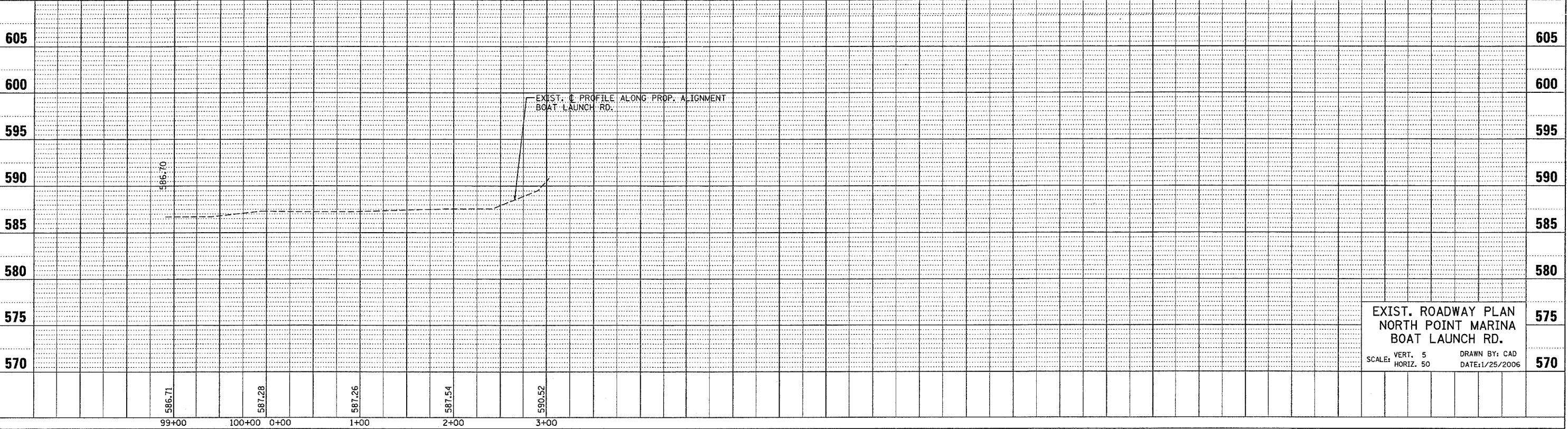
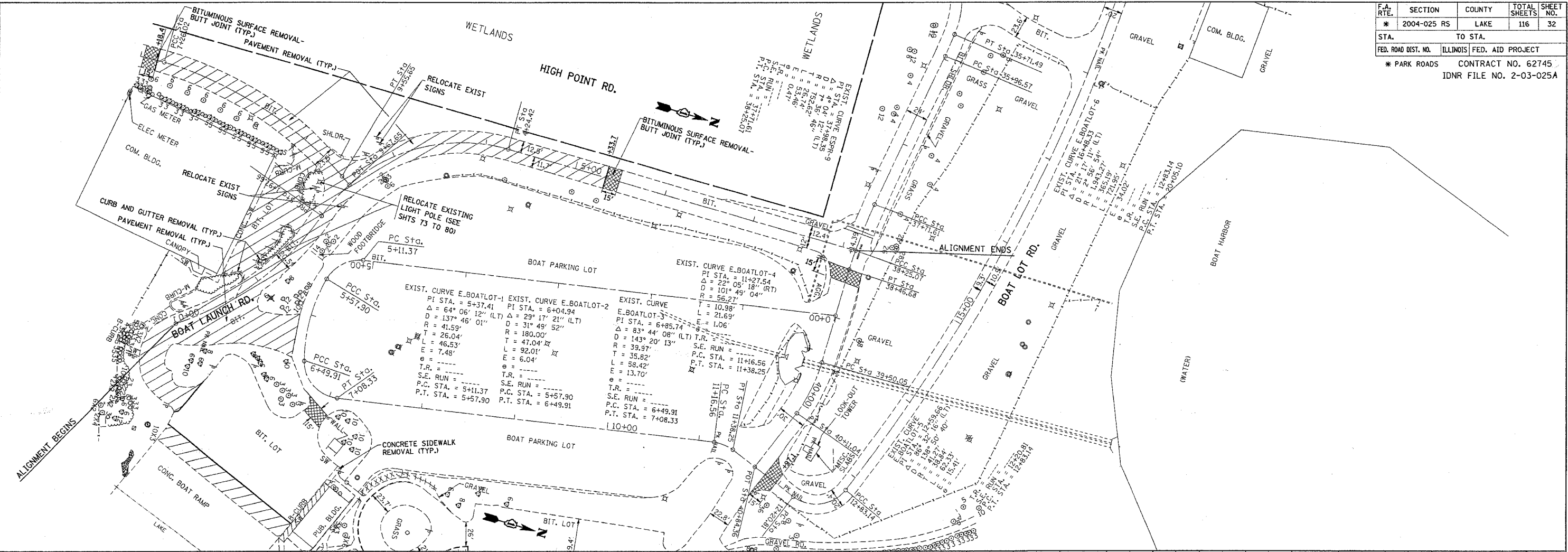


*REF-top/inch
*REF-pl/inch

F.A. RTE.	SECTION	COUNTY	TOTAL SHEETS	SHEET NO.
* 2004-025 RS	LAKE	ILLINOIS	116	32
STA.	TO STA.			
FED. ROAD DIST. NO.	ILLINOIS FED. AID PROJECT			
* PARK ROADS		CONTRACT NO. 62745		IDNR FILE NO. 2-03-025A

PLAN	DATE
BY	
REVISIONS	
NO. 1	
NO. 2	
NO. 3	
NO. 4	
NO. 5	
NO. 6	
NO. 7	
NO. 8	
NO. 9	
NO. 10	

PROFILE	DATE
BY	
REVISIONS	
NO. 1	
NO. 2	
NO. 3	
NO. 4	
NO. 5	
NO. 6	
NO. 7	
NO. 8	
NO. 9	
NO. 10	



EXIST. ROADWAY PLAN
NORTH POINT MARINA
BOAT LAUNCH RD.
SCALE: VERT. 5
HORIZ. 50
DRAWN BY: CAD
DATE: 1/25/2006