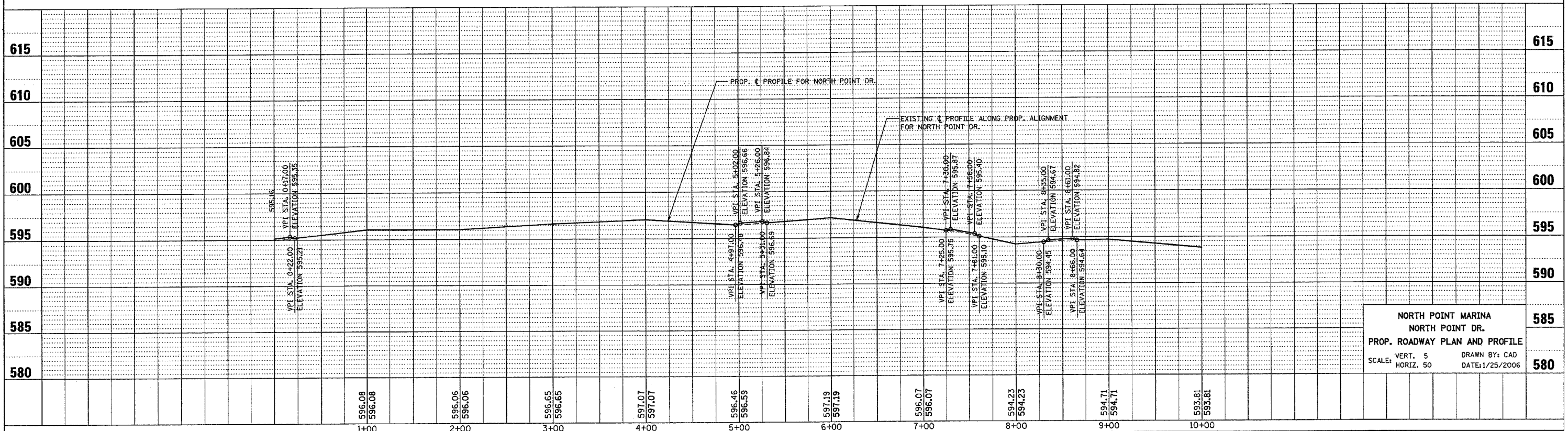
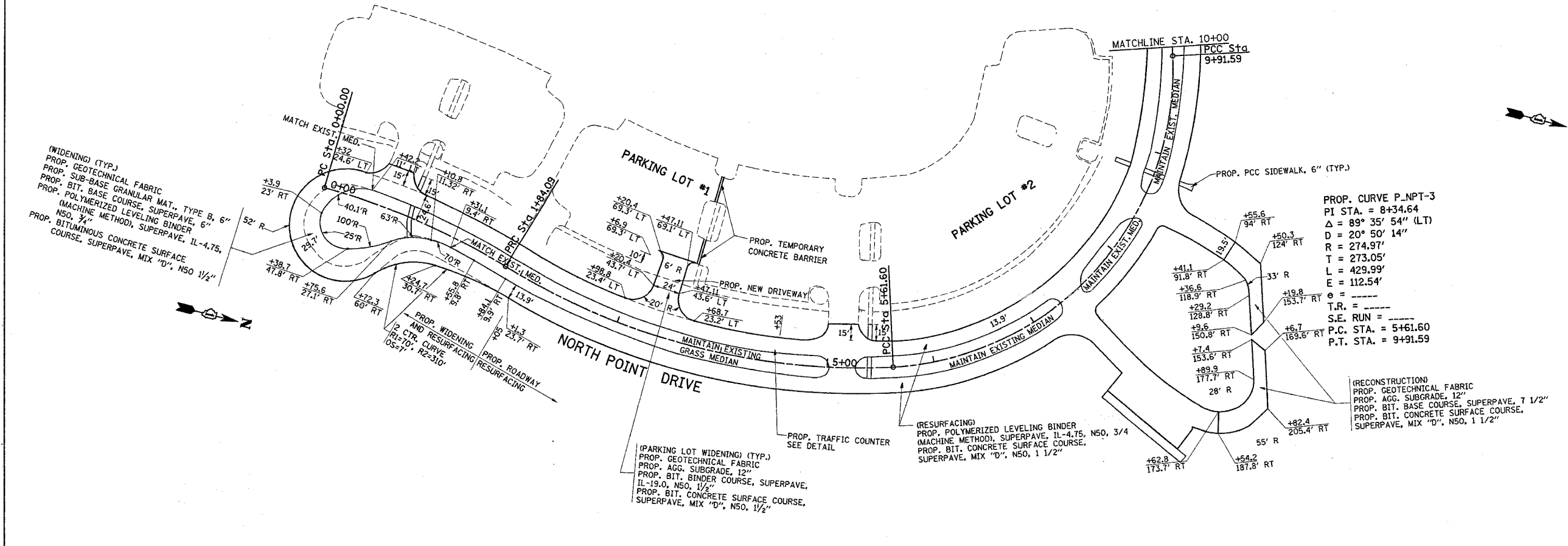


*REF-topnpt
*REF-pfnpt

F.A. RTE.	SECTION	COUNTY	TOTAL SHEETS	SHEET NO.
* 2004-025 RS	LAKE	ILLINOIS	116	36
STA. 0+00		TO STA. 9+00		
FED. ROAD DIST. NO.	ILLINOIS	FED. AID PROJECT		
* PARK ROADS		CONTRACT NO. 62745		
IDNR FILE NO. 02-03-025A				



NORTH POINT MARINA
NORTH POINT DR.
PROP. ROADWAY PLAN AND PROFILE
 SCALE: VERT. 5 DRAWN BY: CAD
 HORIZ. 50 DATE: 1/25/2006