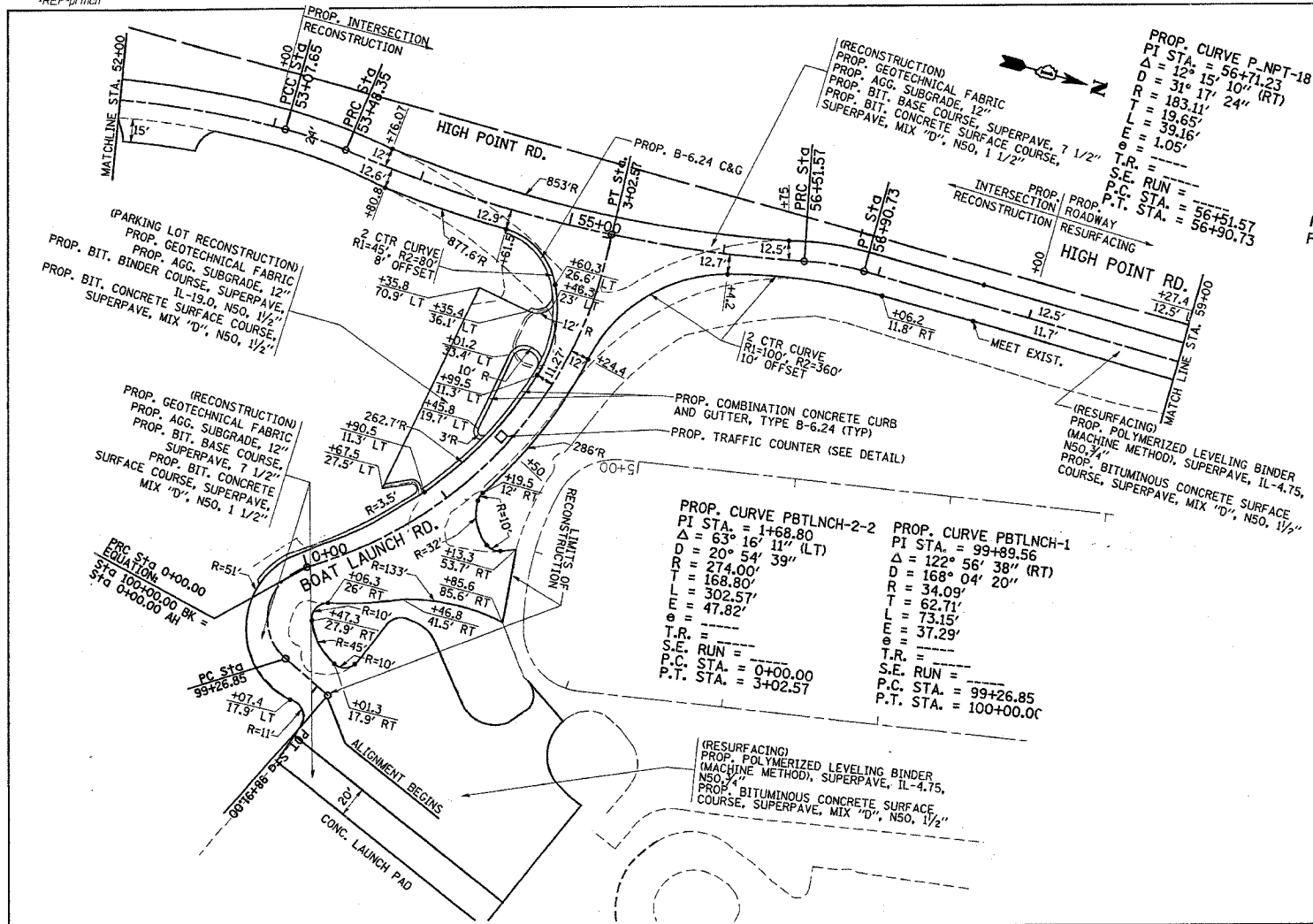


*REF-top/inch
*REF-pf/inch

F.A. RTE.	SECTION	COUNTY	TOTAL SHEETS	SHEET NO.
*	2004-025 RS	LAKE	116	42
STA.		TO STA.		
FED. ROAD DIST. NO.		ILLINOIS FED. AID PROJECT		
* PARK ROADS		CONTRACT NO. 62745		
		IDNR FILE NO. 02-03-025A		



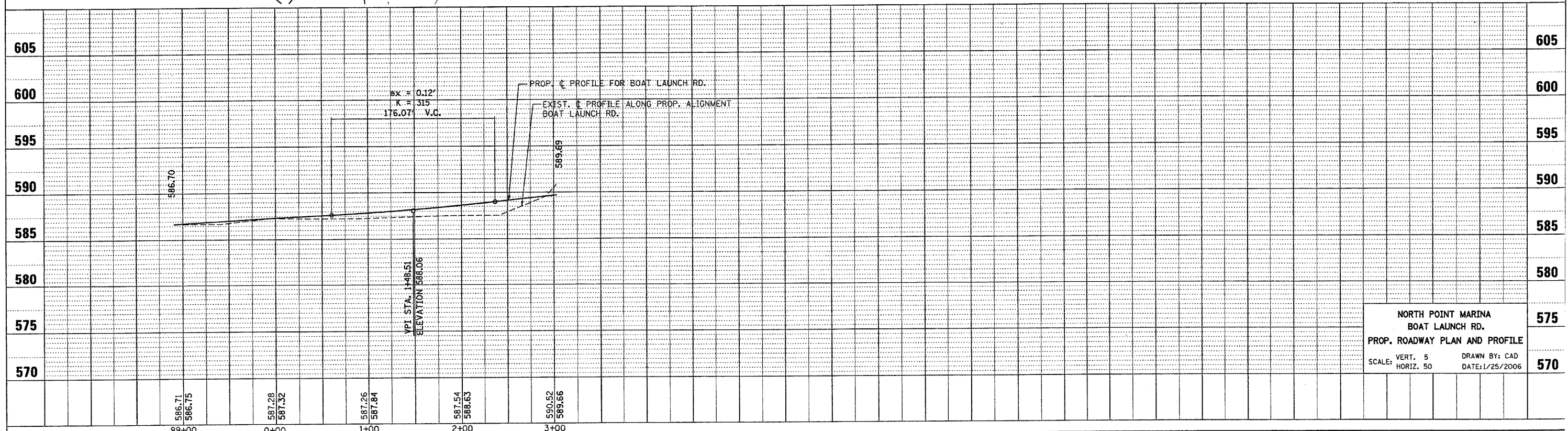
PROP. CURVE P-NPT-18
 PI STA. = 56+71.23
 $\Delta = 12^\circ 15' 10''$ (RT)
 $D = 31^\circ 17' 24''$ (RT)
 $R = 183.11'$
 $T = 19.65'$
 $L = 39.16'$
 $E = 1.05'$
 $\theta =$
 T.R. =
 S.E. RUN =
 P.C. STA. = 56+51.57
 P.T. STA. = 56+90.73

PROP. CURVE P-NPT-15
 PI STA. = 52+32.86
 $\Delta = 13^\circ 45' 53''$ (RT)
 $D = 9^\circ 09' 25''$
 $R = 625.71'$
 $T = 75.52'$
 $L = 150.32'$
 $E = 4.54'$
 $\theta =$
 T.R. =
 S.E. RUN =
 P.C. STA. = 51+57.33
 P.T. STA. = 53+07.65

PROP. CURVE P-NPT-17
 PI STA. = 55+01.41
 $\Delta = 19^\circ 18' 10''$ (LT)
 $D = 6^\circ 21' 57''$
 $R = 900.05'$
 $T = 153.06'$
 $L = 303.23'$
 $E = 12.92'$
 $\theta =$
 T.R. =
 S.E. RUN =
 P.C. STA. = 53+48.35
 P.T. STA. = 56+51.57

PROP. CURVE PBTLNCH-2-2
 PI STA. = 1+68.80
 $\Delta = 63^\circ 16' 11''$ (LT)
 $D = 20^\circ 54' 39''$
 $R = 274.00'$
 $T = 168.80'$
 $L = 302.57'$
 $E = 47.82'$
 $\theta =$
 T.R. =
 S.E. RUN =
 P.C. STA. = 0+00.00
 P.T. STA. = 3+02.57

PROP. CURVE PBTLNCH-1
 PI STA. = 99+89.56
 $\Delta = 122^\circ 56' 38''$ (RT)
 $D = 168^\circ 04' 20''$
 $R = 34.09'$
 $T = 62.71'$
 $L = 73.15'$
 $E = 37.29'$
 $\theta =$
 T.R. =
 S.E. RUN =
 P.C. STA. = 99+26.85
 P.T. STA. = 100+00.00



NORTH POINT MARINA
 BOAT LAUNCH RD.
 PROP. ROADWAY PLAN AND PROFILE
 SCALE: VERT. 5
 HORIZ. 50
 DRAWN BY: CAD
 DATE: 1/25/2006