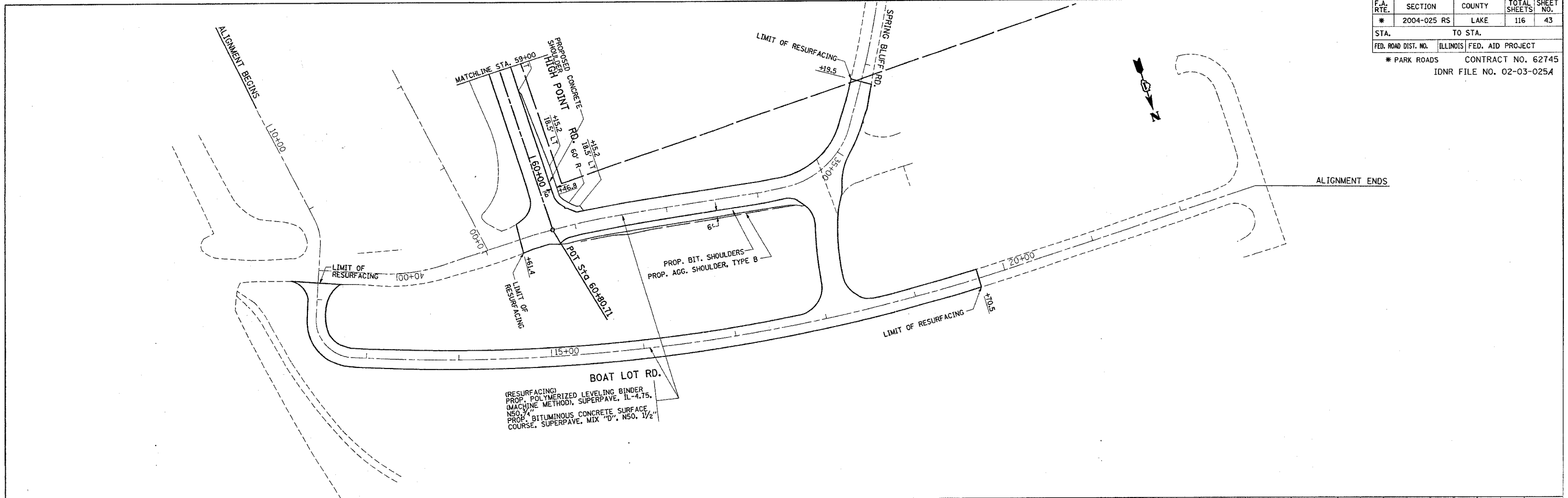
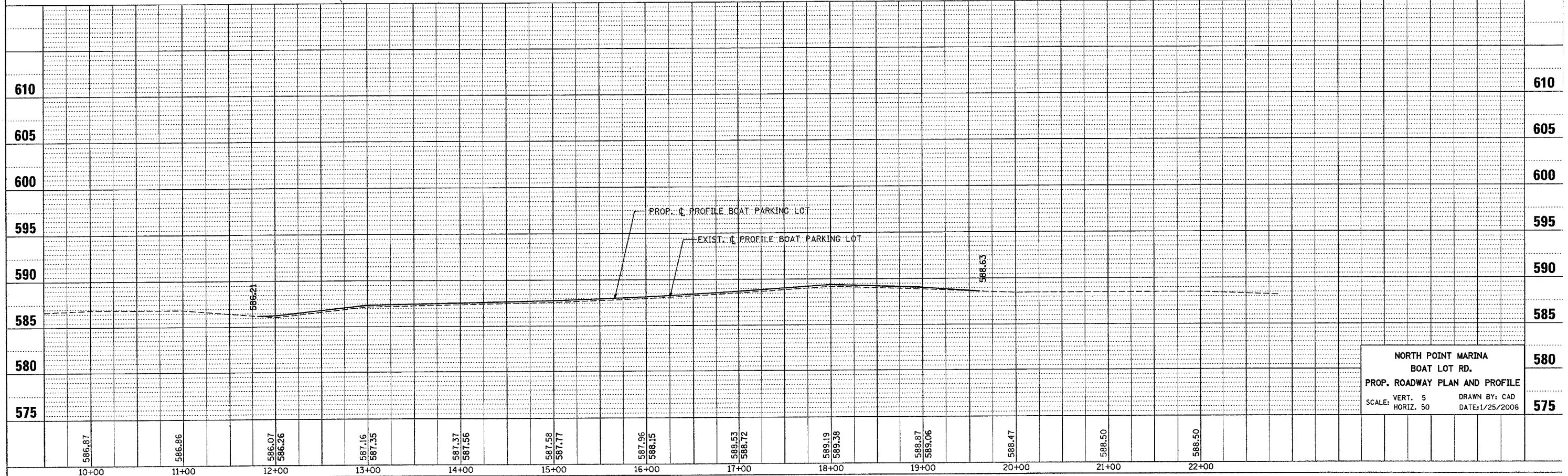


*REF-topblat
*REF-platblat

F.A. RTE.	SECTION	COUNTY	TOTAL SHEETS	SHEET NO.
*	2004-025 RS	LAKE	116	43
STA.		TO STA.		
FED. ROAD DIST. NO.		ILLINOIS FED. AID PROJECT		
* PARK ROADS		CONTRACT NO. 62745		
IDNR FILE NO. 02-03-025A				



(RESURFACING)
PROP. POLYMERIZED LEVELING BINDER
(MACHINE METHOD), SUPERPAVE, IL-4.75,
NSO, 3/4"
PROP. BITUMINOUS CONCRETE SURFACE,
PROP. MIX "D", NSO, 1 1/2"
COURSE, SUPERPAVE, MIX "D", NSO, 1 1/2"



NORTH POINT MARINA
BOAT LOT RD.
PROP. ROADWAY PLAN AND PROFILE
SCALE: VERT. 5 DRAWN BY: CAD
 HORIZ. 50 DATE: 1/25/2006