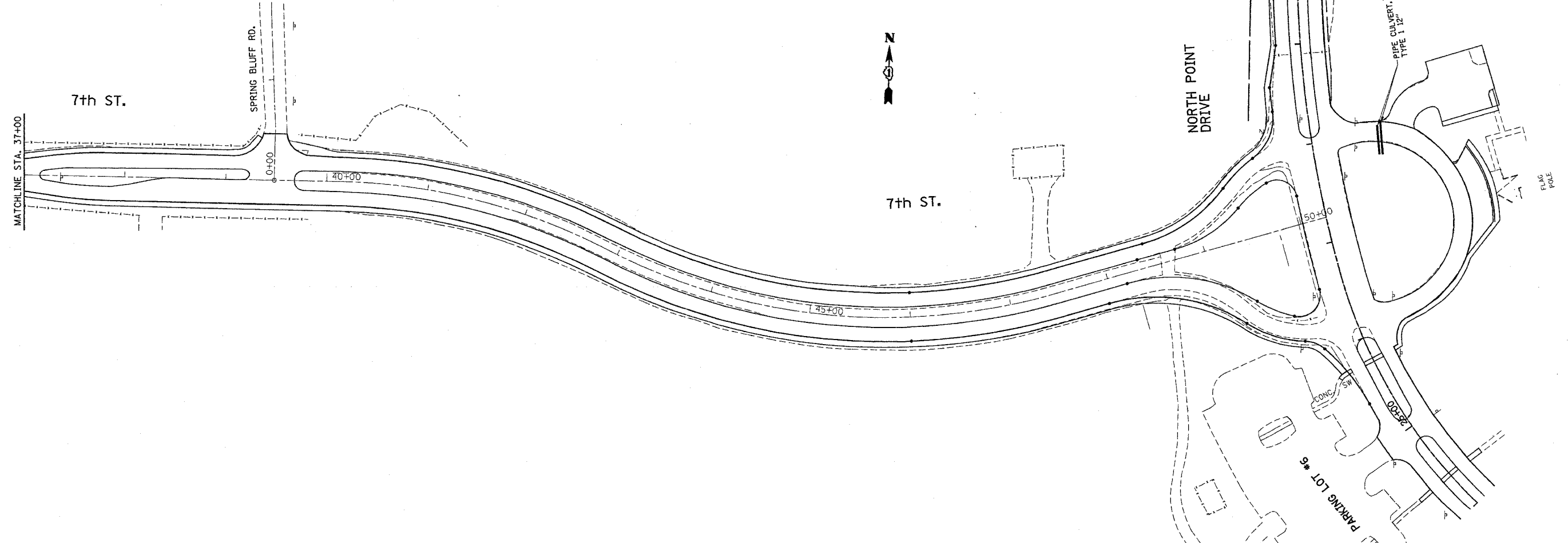
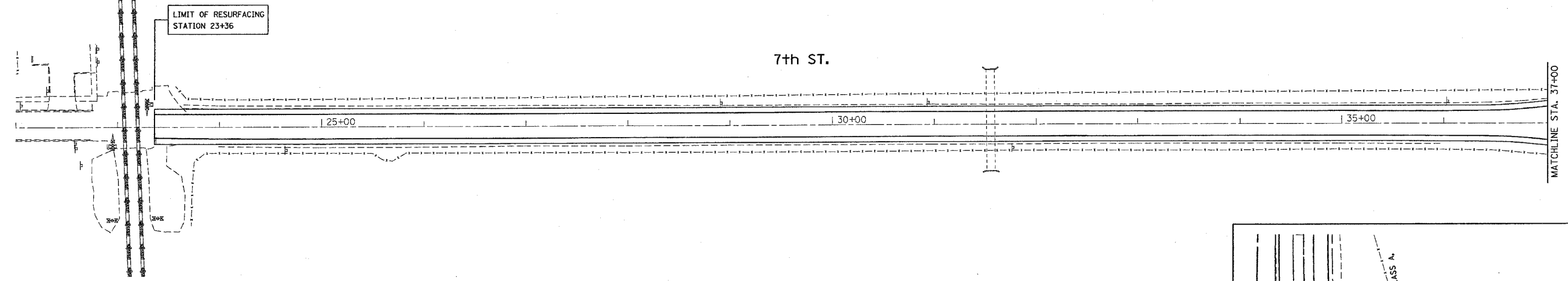


F.A. RTE.	SECTION	COUNTY	TOTAL SHEETS	SHEET NO.
*	2004-025-RS	LAKE	116	56
STA.	TO STA.			
FED. ROAD DIST. NO.	ILLINOIS	FED. AID PROJECT		
* PARK ROADS				
IDNR FILE NO. 2-03-025A				



PLOT DATE = 1/6/2006  
 FILE NAME = c:\p\proj\2004\254\254.dwg  
 PLOT SCALE = 1/8"=1'-0"  
 USER NAME = drakecgn

\* NOTE: INVERT ELEVATIONS FOR PROPOSED PIPE CULVERTS TO BE DETERMINED BY RESIDENT ENGINEER.

REVISIONS	
NAME	DATE

ILLINOIS DEPARTMENT OF TRANSPORTATION  
 NORTH POINT MARINA  
 7th STREET  
 PROPOSED DRAINAGE PLAN

SCALE: VERT. 1"=50'  
 HORIZ. 1"=50'  
 DATE: 1/6/2006

DRAWN BY  
 CHECKED BY