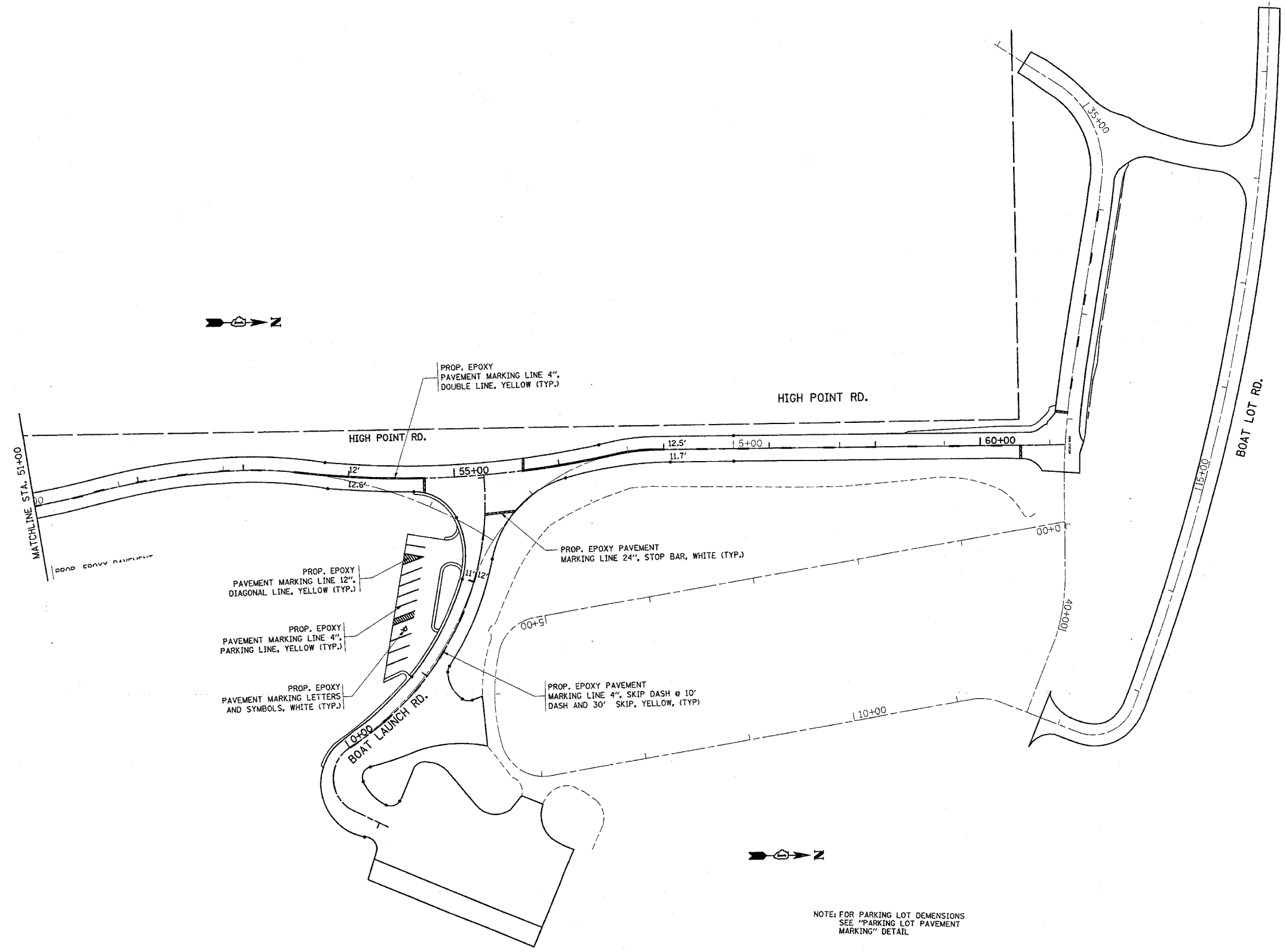


REF:PMK07

F.A. RTE.	SECTION	COUNTY	TOTAL SHEETS	SHEET NO.
*	2004-025 RS	LAKE	116	67
STA. 51+00		TO STA. 60+80		
FED. ROAD DIST. NO.		ILLINOIS	FED. AID PROJECT	
* PARK ROADS			CONTRACT NO. 62745	
IDNR FILE NO. 2-03-025A				



REVISIONS	
NAME	DATE

ILLINOIS DEPARTMENT OF TRANSPORTATION
PAVEMENT MARKING PLAN
NORTH POINT MARINA
HIGH POINT RD., BOAT LAUNCH RD.
& BOAT LOT ROAD

SCALE: VERT. 1"=50'
 HORIZ. 1"=50'
 DATE 1/5/2006

DRAWN BY
 CHECKED BY