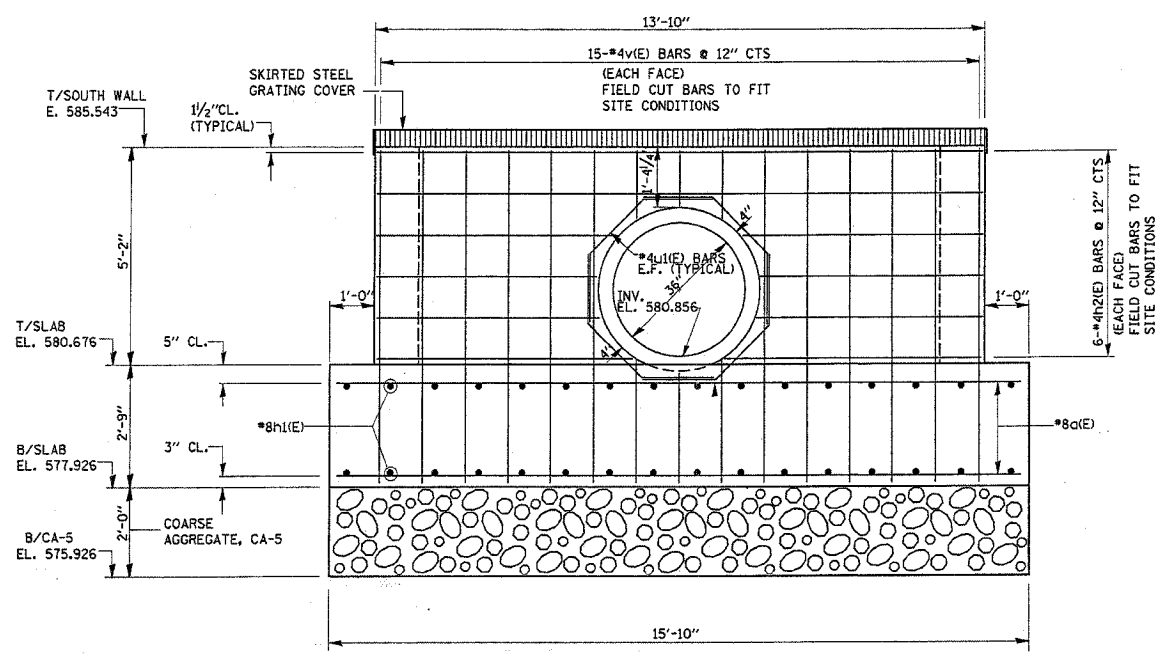


DISTRICT ONE - DESIGN  
PLAN PREPARATION ENGINEER JOHN FORTMANN / RUSS SINHA (847) 705-4209 / ATTENTION MARK V. TINIAKOS (847) 705-4266

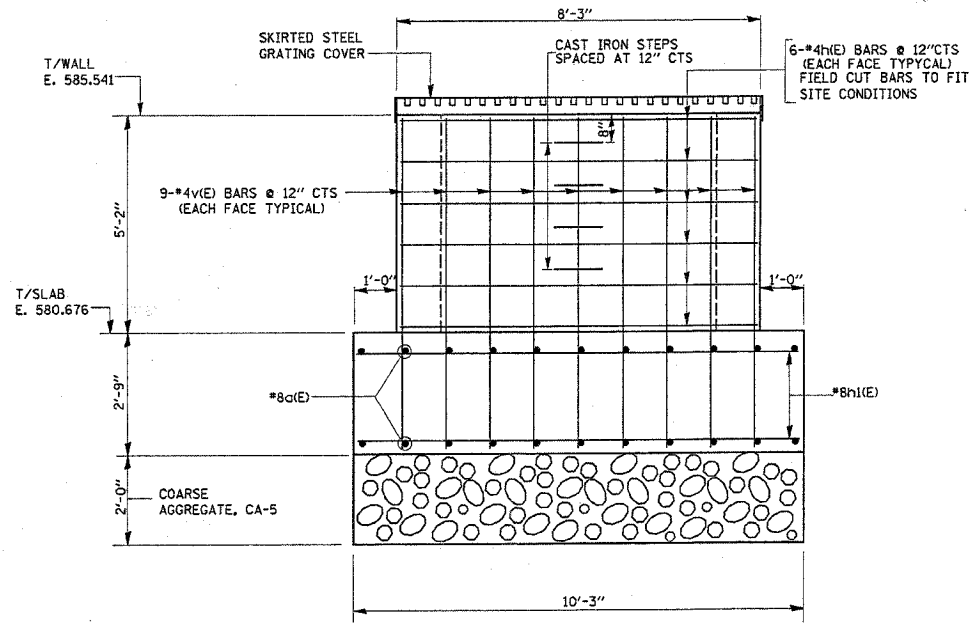
REF -  
REF -  
REF -

SHEET S4 OF S6

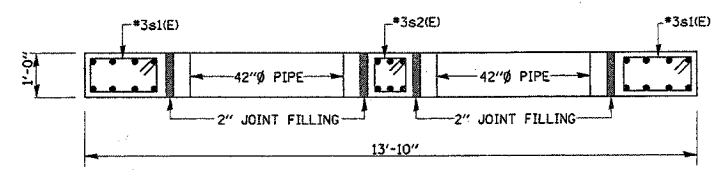
F.A.P. RTE.	SECTION	COUNTY	TOTAL SHEETS	SHEET NO.
*	2004-025 RS	LAKE	116	84
FED. ROAD DIST. NO. 1 ILLINOIS FED. AID PROJECT				
PARK ROADS			CONTRACT NO. 02745	
IDNR FILE NO. 2-03-025A				



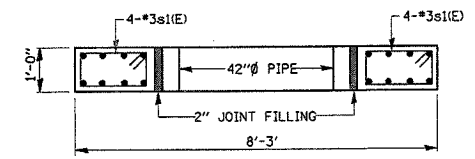
SECTION B-B  
(ELEVATION SOUTH WALL)



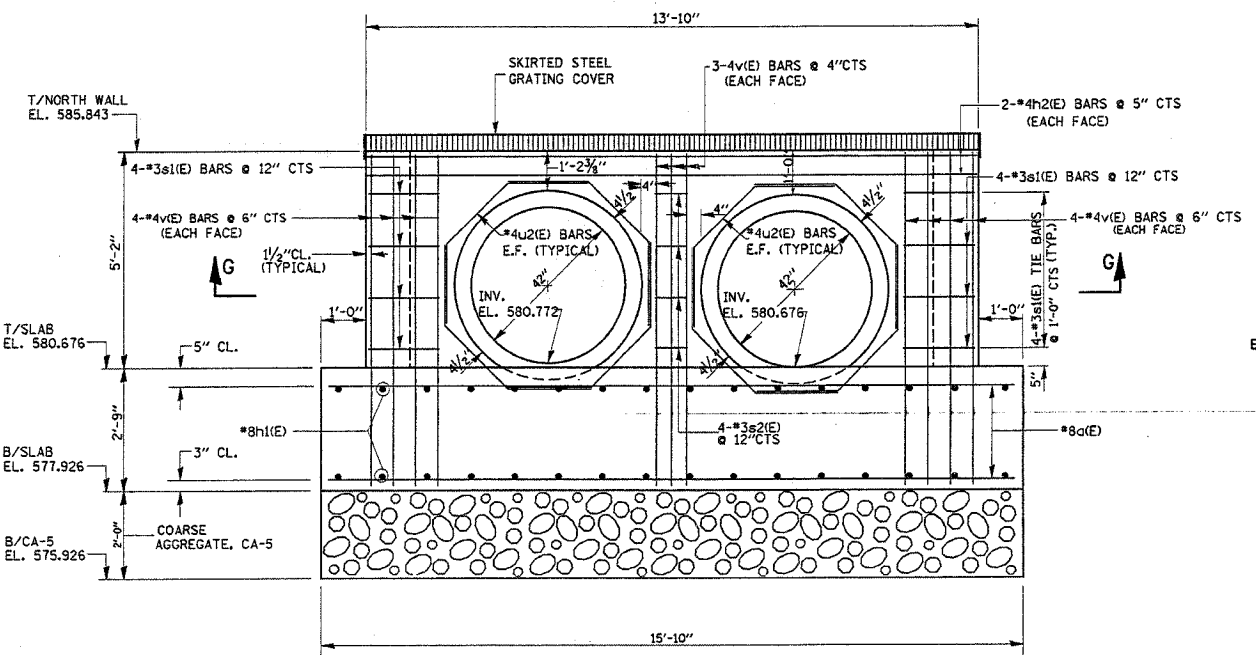
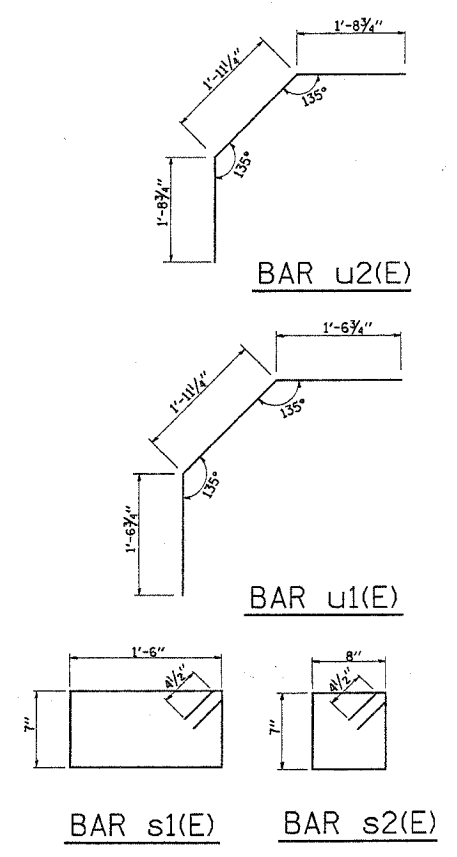
SECTION D-D  
(ELEVATION EAST WALL)



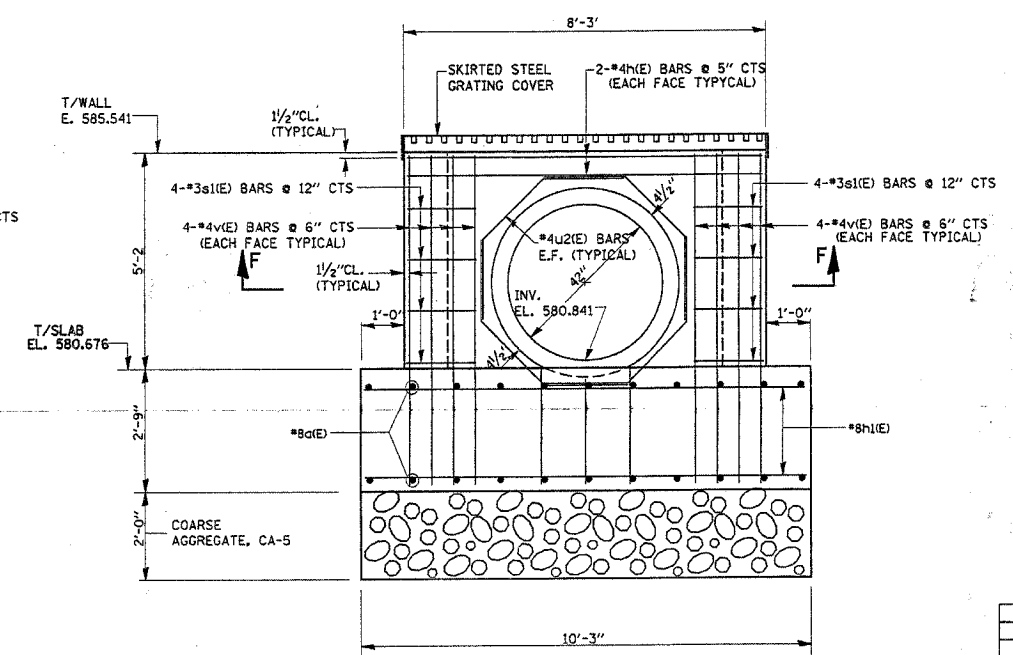
SECTION G-G



SECTION F-F



SECTION A-A  
(ELEVATION NORTH WALL)



SECTION C-C  
(ELEVATION WEST WALL)

REVISIONS	
NAME	DATE

ILLINOIS DEPARTMENT OF TRANSPORTATION  
ILLINOIS BEACH STATE PARK  
(NORTH POINT MARINA)  
JUNCTION CHAMBER  
PLAN AND ELEVATIONS  
SCALE: VERT. NONE  
HORIZ. DATE: NOVEMBER, 2005  
DRAWN BY: MVT  
CHECKED BY: RSS