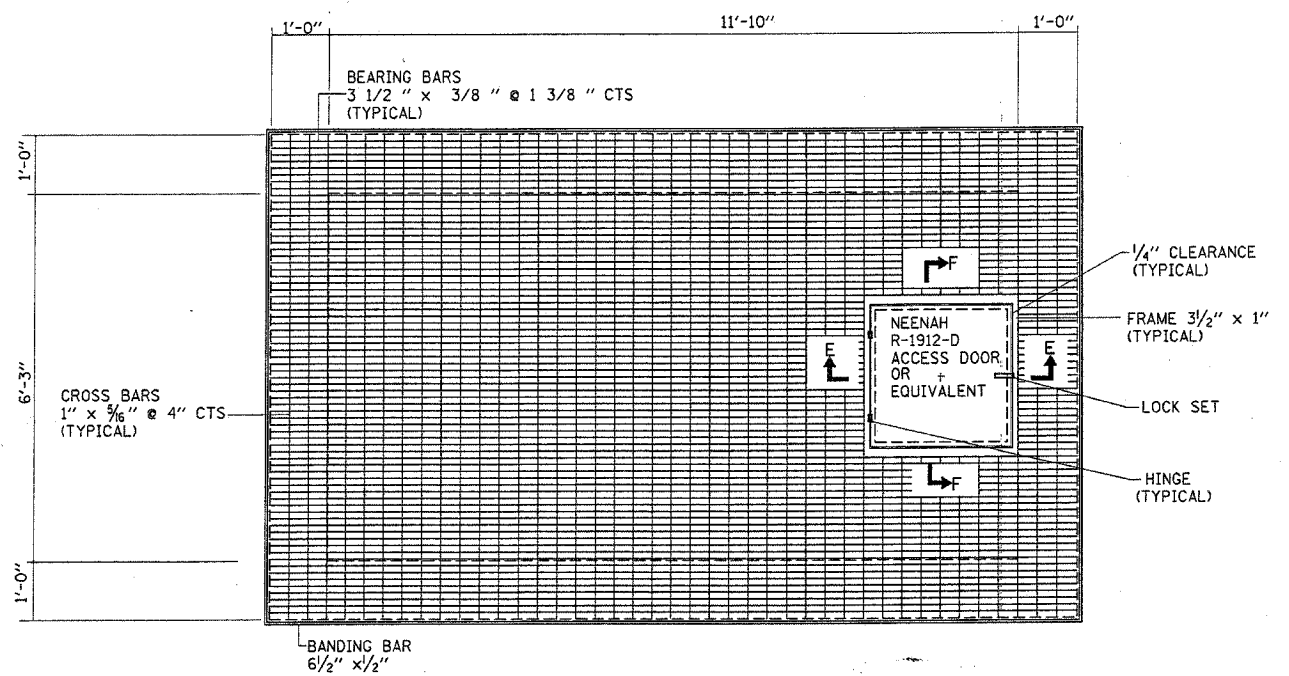


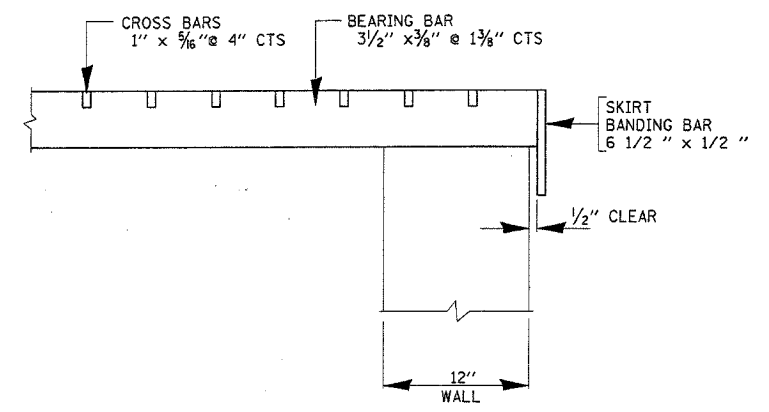
REF-  
REF-  
REF-

SHEET 55 OF 56

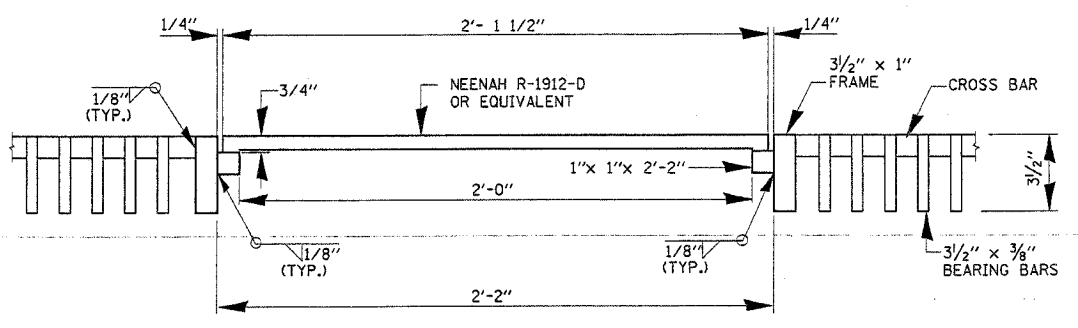
F.A.P. RTE.	SECTION	COUNTY	TOTAL SHEETS	SHEET NO.
*	2004-025 RS	LAKE	116	85
FED. ROAD DIST. NO. 1 ILLINOIS FED. AID PROJECT				
PARK ROADS I.D.N.R. FILE NO.2-03-025A CONTRACT NO. 62745				
D91-191-04				



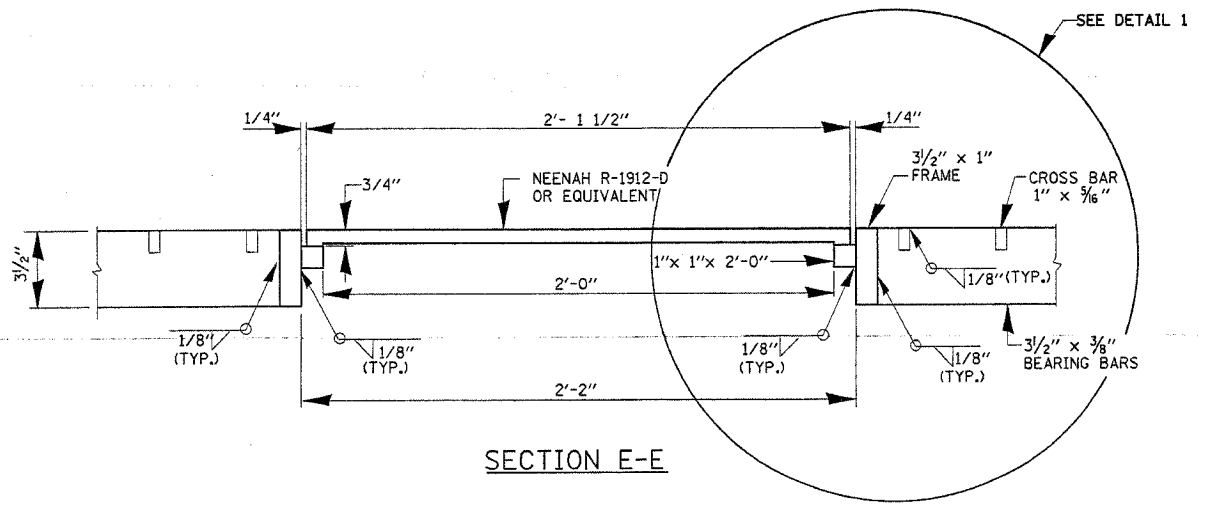
PLAN  
SKIRTED STEEL GRATING COVER



DETAIL 1  
(SKIRTED STEEL GRATING COVER)



SECTION F-F



SECTION E-E

REVISIONS	
NAME	DATE

ILLINOIS DEPARTMENT OF TRANSPORTATION  
ILLINOIS BEACH STATE PARK  
(NORTH POINT MARINA)  
SKIRTED STEEL GRATING COVER  
(DETAILS)  
SCALE: VERT. NONE  
HORIZ. DATE: NOVEMBER, 2005  
DRAWN BY: MVT  
CHECKED BY: RSS

DISTRICT ONE - DESIGN  
PLAN PREPARATION ENGINEER JOHN FORTMANN / RUSS SINHA (847) 705-4209 / ATTENTION MARK V. TINIAKOS (847) 705-4266