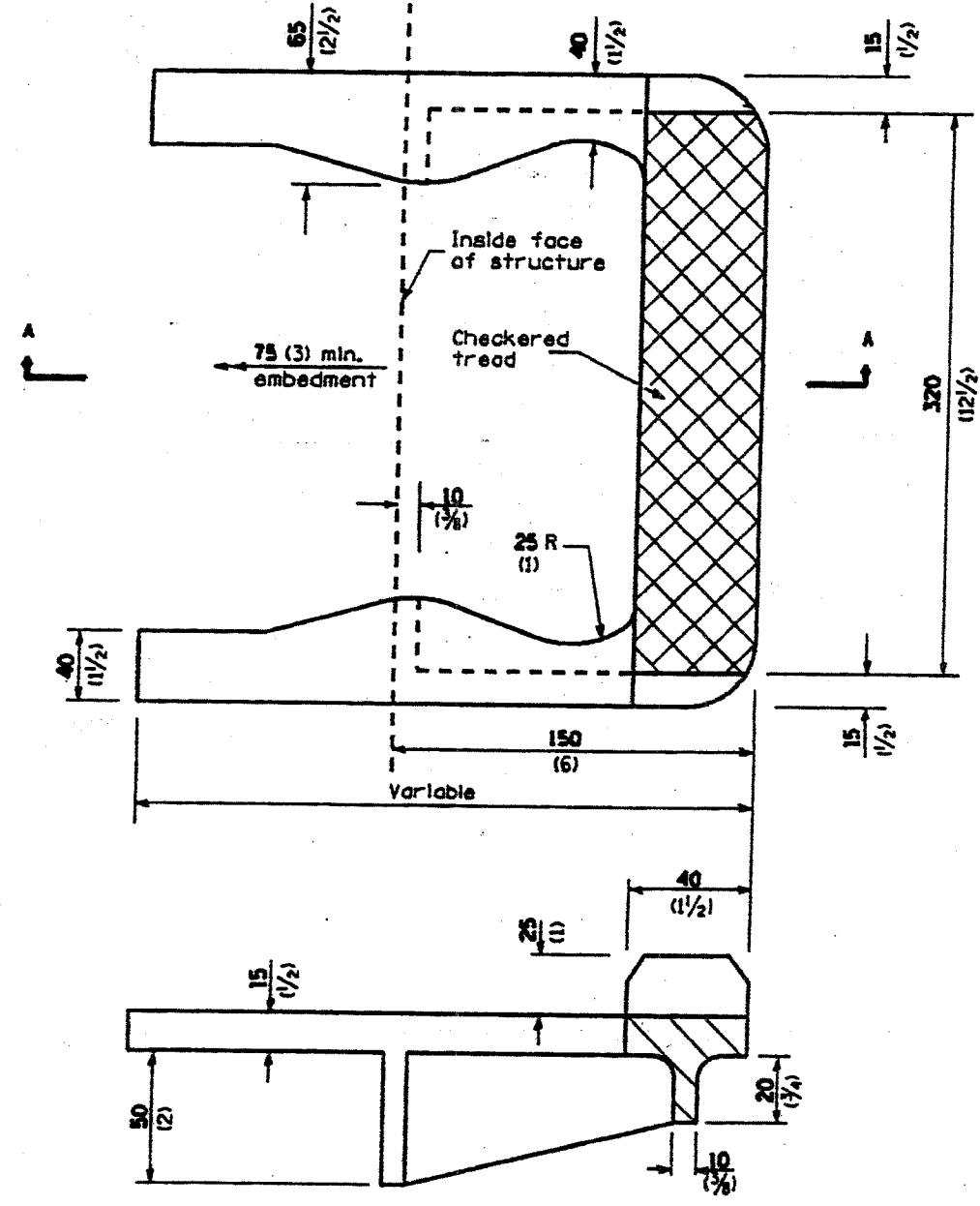


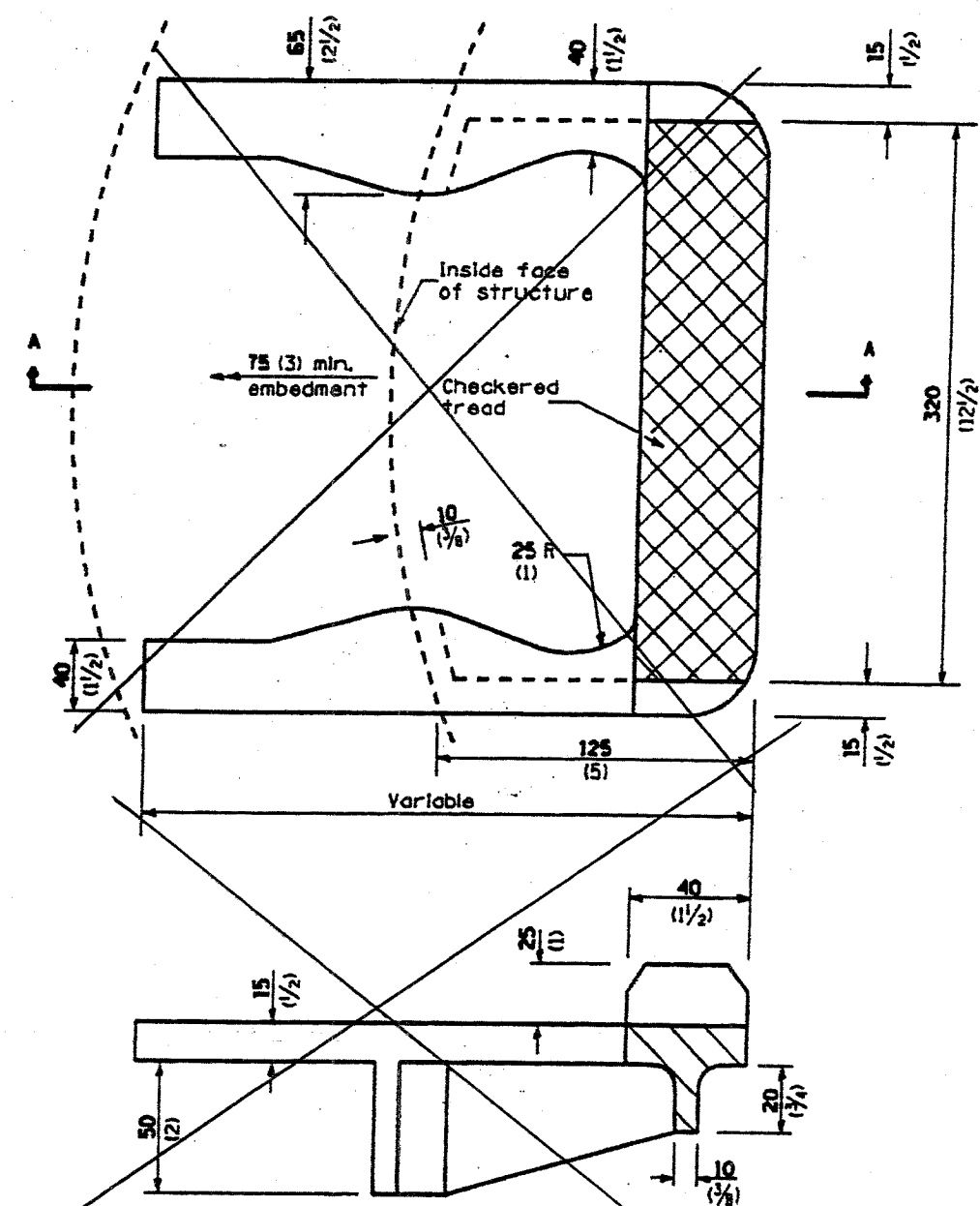
DISTRICT ONE - DESIGN
 PLAN PREPARATION ENGINEER JOHN FORTMANN / RUSS SINHA (847) 705-4209 / ATTENTION MARK V. TINIAKOS (847) 705-4266

SHEET S6 OF S6

F.A.P. RTE. 1	SECTION 2004-025 RS	COUNTY LAKE	TOTAL SHEETS 116	SHEET NO. 86
FED. ROAD DIST. NO. 1 ILLINOIS FED. AID PROJECT				
PARK ROADS			CONTRACT NO. 62745	
I.D.N.R. FILE NO. 2-03-025A				
D91-191-04				



SECTION A-A
STRAIGHT WALL STRUCTURE



SECTION A-A
CIRCULAR WALL STRUCTURE

ALL DIMENSIONS ARE IN MILLIMETERS AND (INCHES) UNLESS OTHERWISE SHOWN.

REVISIONS	
NAME	DATE

ILLINOIS DEPARTMENT OF TRANSPORTATION
 ILLINOIS BEACH STATE PARK
 (NORTH POINT MARINA)
 CAST IRON STEPS
 STANDARD 602701

SCALE: VERT. NONE
 HORIZ. NONE
 DATE: NOVEMBER, 2005
 DRAWN BY: MVT
 CHECKED BY: RSS