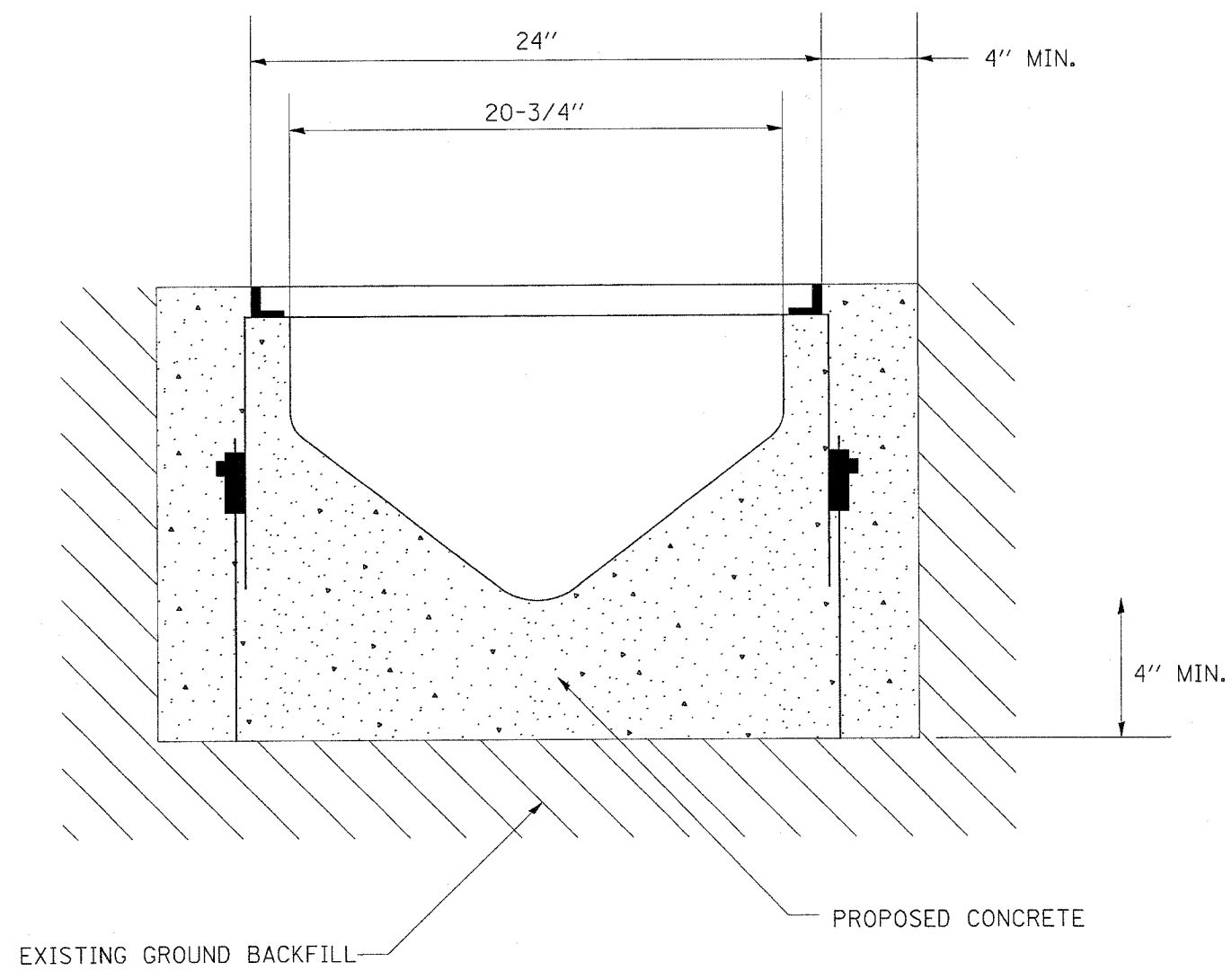


F.A.I. RTE.	SECTION	COUNTY	TOTAL SHEETS	SHEET NO.
*	2004-025 RS	LAKE	116	92
FED. ROAD DIST. NO. 1 ILLINOIS FED. AID PROJECT				
* PARK ROADS IDNR FILE No. 2-03-025 A D91-191-04				



NOTE: A 1% SLOPE SHALL BE PROVIDED ALONG THE BASE OF THE PIPE.

REVISIONS	
NAME	DATE

ILLINOIS DEPARTMENT OF TRANSPORTATION
 ILLINOIS BEACH STATE PARK
 NORTH POINT MARINA
 SLOTTED DRAIN DETAIL
 SCALE: VERT. DRAWN BY
 HORIZ. CHECKED BY
 DATE 1/6/2006

*REF-
 *REF-
 *REF-