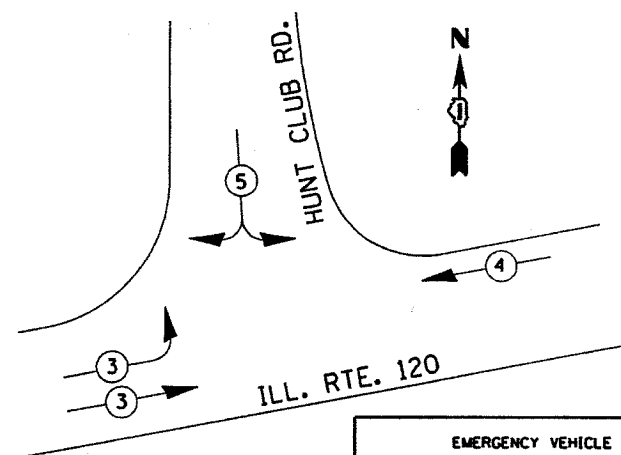


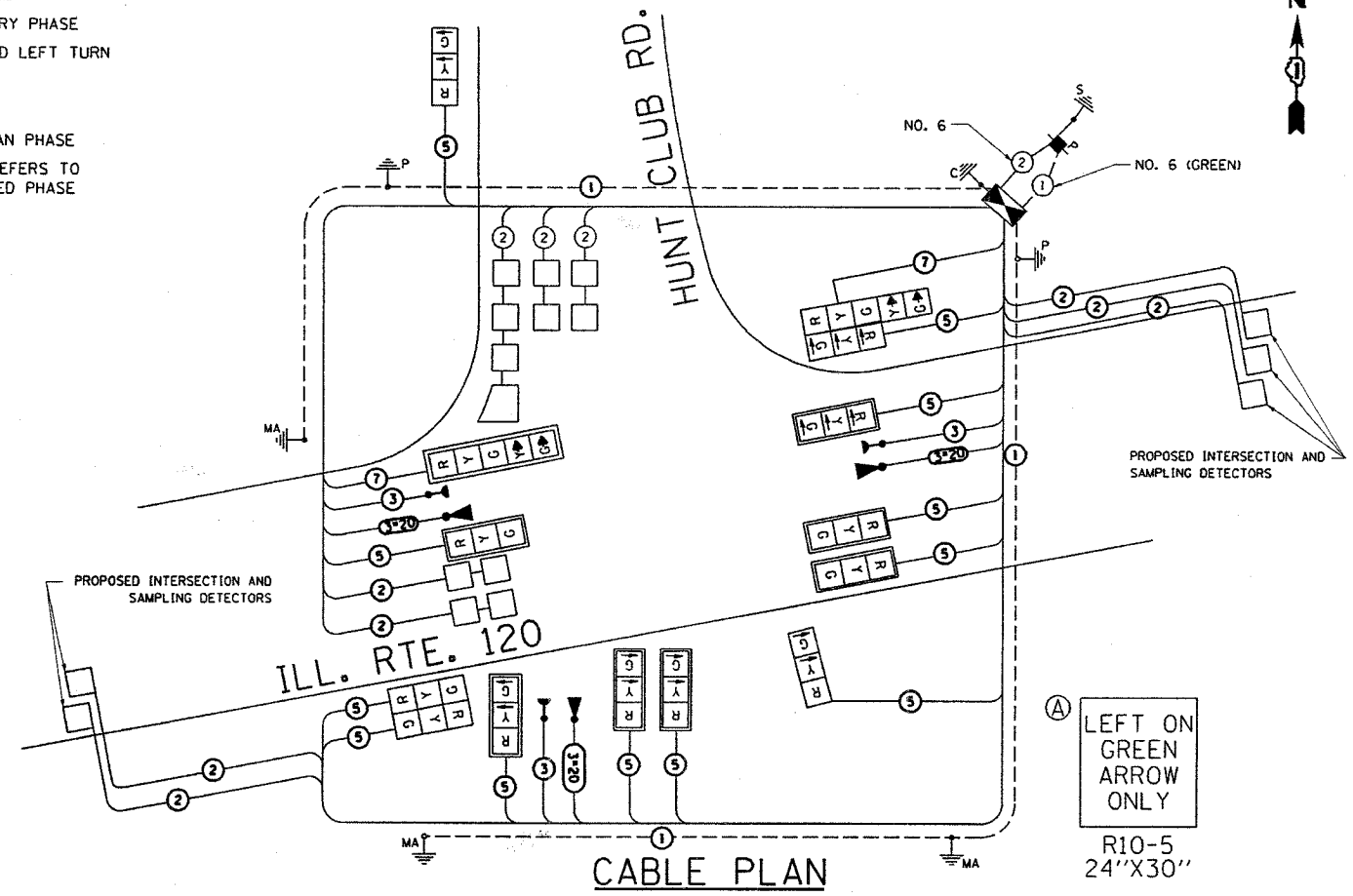
PHASE DESIGNATION DIAGRAM

OVERLAP LETTER	PERMISSIVE PHASE	PROTECTED PHASE
A	= 6	+ 4
B	= 4	+ 5

EMERGENCY VEHICLE PREEMPTION SEQUENCE



EMERGENCY VEHICLE PREEMPTORS			
EMERGENCY VEHICLE PREEMPTOR	3	4	5
MOVEMENT			



CABLE PLAN LEGEND

PROPOSED	EXISTING	DESCRIPTION	PROPOSED	EXISTING	DESCRIPTION
		CONTROLLER CABINET			RAILROAD CONTROL CABINET
		SERVICE INSTALLATION, (P) POLE OR (G) GROUND MOUNT			TELEPHONE CONNECTION
		GROUND ROD AT (C) CONTROLLER, (H) HANDHOLE, (P) POST, (M) MAST ARM, OR (S) SERVICE			FIBER OPTIC CABLE IN CONDUIT, NUMBER OF FIBERS AS NOTED
		ELECTRIC CABLE IN CONDUIT, NO. 14, UNLESS OTHERWISE NOTED. NUMBER OF CONDUCTORS AS NOTED			GROUND CABLE IN CONDUIT NO. 6 COPPER (GREEN)
		SIGNAL FACE WITH BACKPLATE. "P" INDICATES PROGRAMMED HEAD			12" (300mm) RED WITH 8" (200mm) YELLOW AND GREEN TRAFFIC SIGNAL FACE
		12" (300mm) TRAFFIC SIGNAL SECTION			12" (300mm) PEDESTRIAN SIGNAL SECTION
		ILLUMINATED SIGN "NO LEFT TURN"			ILLUMINATED SIGN "NO RIGHT TURN"
		PUSHBUTTON DETECTOR			DETECTOR LOOP
		PERFORMED DETECTOR LOOP			MICROWAVE VEHICLE SENSOR
		VIDEO DETECTOR			CLOSED CIRCUIT TV
		EMERGENCY VEHICLE SYSTEM DETECTOR			CONFIRMATION BEACON

ITEM	UNIT	QUANTITY
TRAFFIC CONTROL AND PROTECTION, STANDARD 701501	L SUM	1
TRAFFIC CONTROL AND PROTECTION, STANDARD 701701	L SUM	1
TRAFFIC CONTROL AND PROTECTION, STANDARD 701801	L SUM	1
SIGN PANEL - TYPE 2	SO. FT.	31.75
CONDUIT IN TRENCH, 2" DIA., GALVANIZED STEEL	FOOT	624
CONDUIT IN TRENCH, 2 1/2" DIA., GALVANIZED STEEL	FOOT	165
CONDUIT IN PUSH, 4" DIA., GALVANIZED STEEL	FOOT	280
CONDUIT IN TRENCH, 4" DIA., GALVANIZED STEEL	FOOT	65
HANDHOLE	EACH	3
HEAVY-DUTY HANDHOLE	EACH	3
DOUBLE HANDHOLE	EACH	1
TRENCH AND BACKFILL FOR ELECTRICAL WORK	FOOT	934
FULL-ACTUATED CONTROLLER AND TYPE IV CABINET	EACH	1
ELECTRIC CABLE IN CONDUIT, SIGNAL NO. 14 5C	FOOT	3024.5
ELECTRIC CABLE IN CONDUIT, SIGNAL NO. 14 7C	FOOT	206.5
ELECTRIC CABLE IN CONDUIT, LEAD-IN, NO. 14 1 PAIR	FOOT	1275
ELECTRIC CABLE IN CONDUIT, SERVICE, NO. 6 2C	FOOT	10
ELECTRIC CABLE IN CONDUIT, GROUNDING, NO. 6 1C	FOOT	751.5
TRAFFIC SIGNAL POST, GALVANIZED STEEL 14FT.	EACH	1
TRAFFIC SIGNAL POST, GALVANIZED STEEL 16FT.	EACH	1
STEEL MAST ARM ASSEMBLY AND POLE, 36 FT.	EACH	1
STEEL MAST ARM ASSEMBLY AND POLE, 38 FT.	EACH	2
CONCRETE FOUNDATION, TYPE A	FOOT	4
CONCRETE FOUNDATION, TYPE D	FOOT	4
CONCRETE FOUNDATION, TYPE E 30-INCH DIA.	FOOT	30
CONCRETE FOUNDATION, TYPE E 36-INCH DIA.	FOOT	15
SIGNAL HEAD, L.E.D. 2-FACE, 3 SECTION, BRACKET MNTD.	EACH	1
SIGNAL HEAD, L.E.D. 2-FACE, 1-3 SECT., 1-5 SECT. MAST ARM MNTD.	EACH	1
SIGNAL HEAD, L.E.D. 1-FACE, 3 SECTION, MAST ARM MNTD.	EACH	7
SIGNAL HEAD, L.E.D. 1-FACE, 5 SECTION, MAST ARM MNTD.	EACH	1
SIGNAL HEAD, L.E.D. 1-FACE, 3 SECTION, BRACKET MNTD.	EACH	2
INDUCTIVE LOOP DETECTOR	EACH	10
DETECTOR LOOP, TYPE I	FOOT	610
SERVICE INSTALLATION, POLE MOUNT REMOVE EXISTING TRAFFIC SIGNAL EQUIPMENT	EACH	1
* LIGHT DETECTOR	EACH	3
* LIGHT DETECTOR AMPLIFIER	EACH	1
* ELECTRIC CABLE IN CONDUIT, SIGNAL, NO. 14 3C	FOOT	800
* ELECTRIC CABLE IN CONDUIT, NO. 20 3/C, TWISTED, SHIELDED	FOOT	800

I.D.O.T. TRAFFIC SIGNAL INSTALLATION ELECTRICAL SERVICE REQUIREMENTS					TOTAL
TYPE	NO. LAMPS	WATTAGE (INCAND.)	LED	% OPERATION	WATTAGE
SIGNAL (RED)	14	135	17	0.50	119.00
(YELLOW)	16	135	25	0.25	100.00
(GREEN)	16	135	15	0.25	60.00
ARROW	20	135	12	0.10	24.00
PED. SIGNAL		90	25	1.00	
CONTROLLER	1	100	100	1.00	100.00
ILLUM. SIGN		84		0.05	
FLASHER				0.50	
ENERGY COSTS TO:					TOTAL = 403.00

FOUNDATION	DEPTH	FT. (m)	CABLE SLACK	FT. (m)	VERTICAL	FT. (m)		
TYPE A - POST	4	(1.2)	HANDHOLE	6.5	(2.0)	ALL FOUNDATIONS	3.5	(1.0)
D - CONTROLLER	4	(1.2)	DOUBLE HANDHOLE	13	(4.0)	MAST ARM (L) POLE	20" H-L-2"	
E - M. ARM POLE			SIGNAL POST	2	(1.0)	BRACKET MOUNTED	13	(4.0)
24" (600mm)	10	(3.0)	CONTROLLER CAB.	1	(0.5)	PED. PUSHBUTTON	4	(1.2)
30" (750mm)	15	(4.6)	FIBER OPTIC	13	(4.0)	ELECTRIC SERVICE	13.5	(4.1)
36" (900mm)	15	(4.6)	ELECTRIC SERVICE	1	(0.5)	SERVICE TO GROUND	13.5	(4.1)
			GROUND CABLE	1	(0.5)	POST MOUNTED	6	(1.8)

12/19/2006
c:\projects\1219\1120\1120\1120.dgn
kathazhkybc

REVISIONS	
NAME	DATE

ILLINOIS DEPARTMENT OF TRANSPORTATION
CABLE PLAN, PHASE DESIGNATION DIAGRAM AND SCHEDULE OF QUANTITIES
IL. 120 @ HUNT CLUB RD.
SCALE: VERT. 1"=20"
SCALE: HORIZ. DATE 12/19/2006
DRAWN BY: BCK
DESIGNED BY: BCK
CHECKED BY: DAD

Revised on 12/18/06 A.A