

SUMMARY OF QUANTITIES			TOTAL QUANTITIES	CONSTRUCTION TYPE CODE				
CODE NO	ITEM	UNIT		90% FED 10% STATE URBAN 1000-IA				
55101400	STORM SEWER REMOVAL 30"	FOOT	10	10				
552A0800	STORM SEWERS JACKED IN PLACE, CLASS A 21"	FOOT	156	156				
60107600	PIPE UNDERDRAINS 4"	FOOT	35	35				
60200805	CATCH BASINS, TYPE A, 4' -DIAMETER, TYPE 8 GRATE	EACH	2	2				
60207605	CATCH BASINS, TYPE C, TYPE 8 GRATE	EACH	1	1				
60208240	CATCH BASINS, TYPE C, TYPE 24 FRAME AND GRATE	EACH	2	2				
60237470	INLETS, TYPE A, TYPE 24 FRAME AND GRATE	EACH	2	2				
60255500	MANHOLES TO BE ADJUSTED	EACH	1	1				
60255700	MANHOLES TO BE ADJUSTED WITH NEW TYPE 1 FRAME, OPEN LID	EACH	1	1				
60255800	MANHOLES TO BE ADJUSTED WITH NEW TYPE 1 FRAME, CLOSED LID	EACH	2	2				
60260400	INLETS TO BE ADJUSTED WITH NEW TYPE 1 FRAME, CLOSED LID	EACH	1	1				
60500060	REMOVING INLETS	EACH	1	1				
60603300	GUTTER OUTLET	EACH	1	1				
60605000	COMBINATION CONCRETE CURB AND GUTTER, TYPE B-6. 24	FOOT	777	777				
60608521	COMBINATION CONCRETE CURB AND GUTTER, TYPE M-2. 24	FOOT	991	991				
67000400	ENGINEER'S FIELD OFFICE, TYPE A	CAL MO	8	8				
67100100	MOBILIZATION	L SUM	1	1				
70101800	TRAFFIC CONTROL AND PROTECTION (SPECIAL)	L SUM	1	1				
70103815	TRAFFIC CONTROL SURVEILLANCE	CAL DA	13	13				
70300100	SHORT-TERM PAVEMENT MARKING	FOOT	1809	1809				
70300210	TEMPORARY PAVEMENT MARKING - LETTERS AND SYMBOLS	SQ FT	471.9	471.9				
70300220	TEMPORARY PAVEMENT MARKING - LINE 4"	FOOT	7074	7074				
70300240	TEMPORARY PAVEMENT MARKING - LINE 6"	FOOT	2503	2503				

SUMMARY OF QUANTITIES			TOTAL QUANTITIES	CONSTRUCTION TYPE CODE				
CODE NO	ITEM	UNIT		90% FED 10% STATE URBAN 1000-IA	90% FED 10% STATE URBAN 1000-IA	TRAFFIC Y031-1F	OPTICOM VILLAGE OF GURNEE 100% Y031-3D	
70300260	TEMPORARY PAVEMENT MARKING - LINE 12"	FOOT	108	108				
70300280	TEMPORARY PAVEMENT MARKING - LINE 24"	FOOT	121	121				
70301000	WORK ZONE PAVEMENT MARKING REMOVAL	SQ FT	3805	3805				
70400100	TEMPORARY CONCRETE BARRIER	FOOT	654	654				
72000200	SIGN PANEL - TYPE 2	SQ FT	31.75			31.75		
78000100	THERMOPLASTIC PAVEMENT MARKING - LETTERS AND SYMBOLS	SQ FT	471.9	471.9				
78000200	THERMOPLASTIC PAVEMENT MARKING - LINE 4"	FOOT	7074	7074				
78000400	THERMOPLASTIC PAVEMENT MARKING - LINE 6"	FOOT	2503	2503				
78000600	THERMOPLASTIC PAVEMENT MARKING - LINE 12"	FOOT	108	108				
78000650	THERMOPLASTIC PAVEMENT MARKING - LINE 24"	FOOT	121	121				
78100100	RAISED REFLECTIVE PAVEMENT MARKER	EACH	85	85				
78300200	RAISED REFLECTIVE PAVEMENT MARKER REMOVAL	EACH	18	18				
81000600	CONDUIT IN TRENCH, 2" DIA., GALVANIZED STEEL	FOOT	624			624		
81000700	CONDUIT IN TRENCH, 2 1/2" DIA., GALVANIZED STEEL	FOOT	165			165		
81001000	CONDUIT IN TRENCH, 4" DIA., GALVANIZED STEEL	FOOT	65			65		
81018900	CONDUIT PUSHED, 4" DIA., GALVANIZED STEEL	FOOT	280			280		
81400100	HANDHOLE	EACH	3			3		
81400200	HEAVY-DUTY HANDHOLE	EACH	3			3		
81400300	DOUBLE HANDHOLE	EACH	1			1		
81900200	TRENCH AND BACKFILL FOR ELECTRICAL WORK	FOOT	934			934		
85700200	FULL-ACTUATED CONTROLLER AND TYPE IV CABINET	EACH	1			1		
87301225	ELECTRIC CABLE IN CONDUIT, SIGNAL NO. 14 3C	FOOT	800			800		
87301245	ELECTRIC CABLE IN CONDUIT, SIGNAL NO. 14 5C	FOOT	3024.5			3024.5		

* SPECIALTY ITEMS
 Rev. 1-3-07

REVISIONS		ILLINOIS DEPARTMENT OF TRANSPORTATION SUMMARY OF QUANTITIES
NAME	DATE	

10/14/2006

SUMMARY OF QUANTITIES			TOTAL QUANTITIES	CONSTRUCTION TYPE CODE		
CODE NO	ITEM	UNIT		90% FED. 10% STATE URBAN I000-IA	90% FED. 6.7% STATE 3.3% COUNTY TRAFFIC Y031-1F	OPTICOM VILLAGE OF GURNEE 100% Y031-3D
87301305	ELECTRIC CABLE IN CONDUIT, LEAD-IN, NO. 14 1 PAIR	FOOT	1275	1275		
87301805	ELECTRIC CABLE IN CONDUIT, SERVICE, NO. 6 2 C	FOOT	10	10		
87502480	TRAFFIC SIGNAL POST, GALVANIZED STEEL 14 FT.	EACH	1	1		
87700220	STEEL MAST ARM ASSEMBLY AND POLE, 36 FT.	EACH	1	1		
87700230	STEEL MAST ARM ASSEMBLY AND POLE, 38 FT.	EACH	2	2		
87800100	CONCRETE FOUNDATION, TYPE A	FOOT	4	4		
87800200	CONCRETE FOUNDATION, TYPE D	FOOT	4	4		
87800400	CONCRETE FOUNDATION, TYPE E 30-INCH DIAMETER	FOOT	30	30		
87800415	CONCRETE FOUNDATION, TYPE E 36-INCH DIAMETER	FOOT	15	15		
88030020	SIGNAL HEAD, LED, 1-FACE, 3-SECTION, MAST-ARM MOUNTED	EACH	7	7		
88030050	SIGNAL HEAD, LED, 1-FACE, 3-SECTION, BRACKET MOUNTED	EACH	2	2		
88030210	SIGNAL HEAD, LED, 2-FACE, 3-SECTION, BRACKET MOUNTED	EACH	1	1		
88500100	INDUCTIVE LOOP DETECTOR	EACH	10	10		
88600100	DETECTOR LOOP, TYPE I	FOOT	610	610		
88700200	LIGHT DETECTOR	EACH	3		3	
88700300	LIGHT DETECTOR AMPLIFIER	EACH	1		1	
89000100	TEMPORARY TRAFFIC SIGNAL INSTALLATION	EACH	1	1		
89502375	REMOVE EXISTING TRAFFIC SIGNAL EQUIPMENT	EACH	1	1		
A2006516	TREE, QUERCUS BICOLOR (SWAMP WHITE OAK), 2" CALIPER, BALLED AND BURLAPPED	EACH	4	4		
X0322256	TEMPORARY INFORMATION SIGNING	SQ FT	77.1	77.1		
X0322584	REVTMENT MAT REMOVAL	SQ YD	301	301		
X4067107	POLYMERIZED LEVELING BINDER (MACHINE METHOD), IL-4.75, N50	TON	693	693		
X6063600	COMBINATION CONCRETE CURB AND GUTTER, TYPE M-4.24	FOOT	154	154		

SUMMARY OF QUANTITIES			TOTAL QUANTITIES	CONSTRUCTION TYPE CODE		
CODE NO	ITEM	UNIT		90% FED. 10% STATE URBAN I000-IA	90% FED. 6.7% STATE 3.3% COUNTY TRAFFIC Y031-1F	OPTICOM VILLAGE OF GURNEE 100% Y031-3D
X7030130	PAVEMENT MARKING TAPE, TYPE III 4", SPECIAL	FOOT	9896	9896		
X7030140	PAVEMENT MARKING TAPE, TYPE III 6", SPECIAL	FOOT	971	971		
X7030170	PAVEMENT MARKING TAPE, TYPE III LETTER & SYMBOL, SPECIAL	FOOT	548	548		
*X8050015	SERVICE INSTALLATION - POLE MOUNTED	EACH	1		1	
*X8730027	ELECTRIC CABLE IN CONDUIT, GROUNDING, NO. 6 1C	FOOT	752		752	
*X8730250	ELECTRIC CABLE IN CONDUIT NO. 20 3/C, TWISTED, SHIELDED	FOOT	800			800
XX004068	PORTLAND CEMENT CONCRETE MEDIAN 5"	SQ FT	3110	3110		
XX006198	IMPACT ATTENUATOR, TEMPORARY	EACH	4	4		
Z0013798	CONSTRUCTION LAYOUT	L SUM	1	1		
Δ Z0018500	DRAINAGE STRUCTURES TO BE CLEANED	EACH	6	6		
Z0027800	GEOTECHNICAL FABRIC	SQ YD	176	176		
⊙ Z0076600	TRAINEES	HOOR				
XZ068050	STEEL CASINGS 27"	FOOT	130	130		
87301255	ELECTRIC CABLE IN CONDUIT, SIGNAL NO. 14 TC	FOOT	206.5		206.5	
87502510	TRAFFIC SIGNAL POST, GALVANIZED STEEL, 16 FT.	EACH	1		1	
88030242	SIGNAL HEAD, LED, 2-FACE, 1-3 SECTION, 1-5 SECTION, MAST ARM MOUNTED	EACH	1		1	
88030110	SIGNAL HEAD, LED 1-FACE, 5-SECTION, MAST ARM MOUNTED	EACH	1		1	

10/14/2006

⊙ Y080
 Δ NON-PARTICIPATING
 * SPECIALTY ITEMS

Δ Rev. 1-3-07

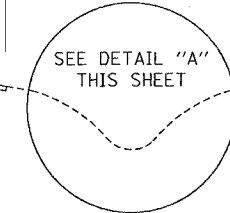
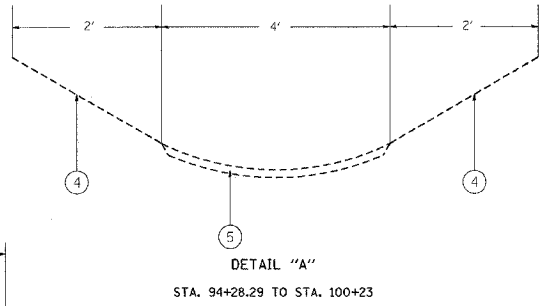
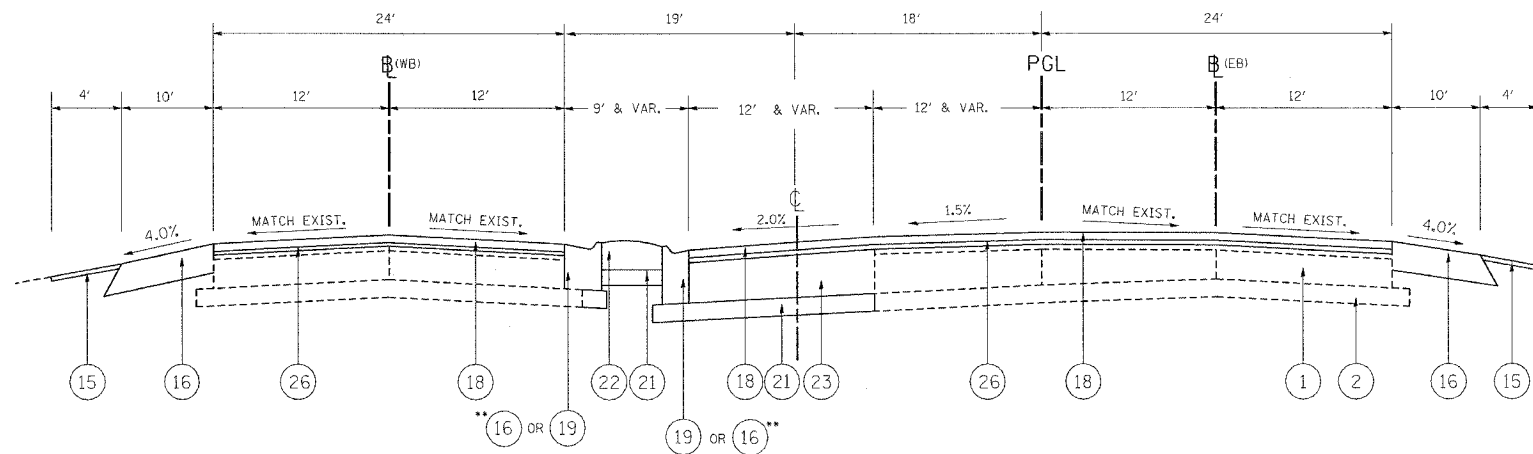
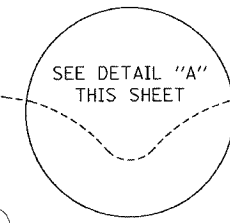
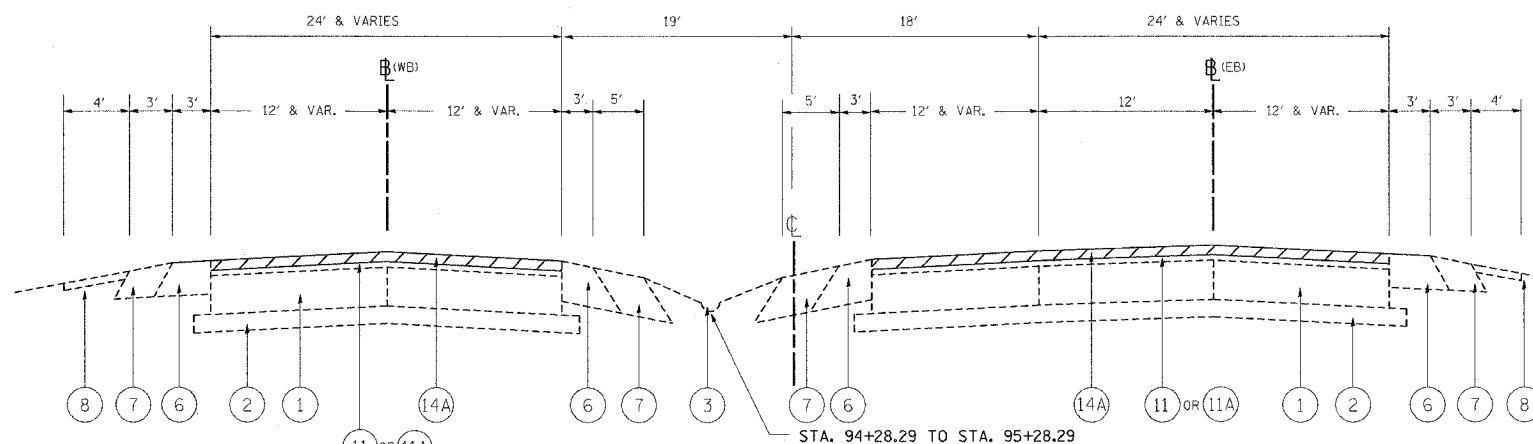
REVISIONS	
NAME	DATE

ILLINOIS DEPARTMENT OF TRANSPORTATION
 SUMMARY OF QUANTITIES

F.A.P. RTE.	SECTION	COUNTY	TOTAL SHEETS	SHEET NO.
342	(G&I) 1-N-1	LAKE	70	6
STA.		TO STA.		
FED. ROAD DIST. NO.	ILLINOIS	FED. AID PROJECT		

LEGEND:

- ① EXISTING PCC PAVEMENT, 10"
- ② EXISTING AGGREGATE BASE COURSE, 4"
- ③ EXISTING COMB. CURB & GUTTER, TYPE V
- ④ EXISTING GROUND
- ⑤ EXISTING FABRIC FORMED CONCRETE REVETMENT MATS
- ⑥ EXISTING HOT-MIX ASPHALT SHOULDER, 8"
- ⑦ EXISTING AGGREGATE SHOULDERS, TYPE B, 8"
- ⑧ EXISTING EROSION CONTROL BLANKET
- ⑨ EXISTING HOT-MIX ASPHALT BASE COURSE (MS 1200), 9"
- ⑩ EXISTING COMB. CONC. CURB & GUTTER REMOVAL
- ⑪ EXISTING HOT-MIX ASPHALT SURFACE COURSE, 4"
- ⑪A EXISTING HOT-MIX ASPHALT SURFACE COURSE, 2 3/4"
- ⑫ EXISTING PIPE UNDERDRAIN, 4"
- ⑬ EXISTING HOT-MIX ASPHALT SHOULDER, 4"
- ⑭ PROPOSED HOT-MIX ASPHALT SURFACE REMOVAL, VARIABLE DEPTH (3/4" MIN. AND VARIES TO 2 1/2")
- ⑭A PROPOSED HOT-MIX ASPHALT SURFACE REMOVAL, 2 1/2"
- ⑮ PROPOSED EROSION CONTROL BLANKET, SEEDING CL. 2A
- ⑯ PROPOSED HOT-MIX ASPHALT SHOULDER, 8"
- ⑰ PROPOSED POLY. HOT-MIX ASPHALT BINDER COURSE, IL-19, N90, VARIABLE DEPTH (2 1/4" MIN. AND VARIES TO 8")
- ⑱ PROPOSED POLYMERIZED HOT-MIX ASPHALT SURF. COURSE MIX "F", N90, 1-3/4"
- ⑲ PROPOSED COMB. CONC. CURB & GUTTER, TYPE M.2-12
- ⑳ PROPOSED COMB. CONC. CURB & GUTTER, TYPE M.4-24
- ㉑ PROPOSED SUB-BASE GRANULAR MATERIAL, TYPE B, 4"
- ㉒ PROPOSED CONCRETE MEDIAN SURFACE 5"
- ㉓ PROPOSED HOT-MIX ASPHALT BASE COURSE, 10"
- ㉔ PROPOSED COMB. CONC. CURB & GUTTER, TYPE B.6-24
- ㉕ PROPOSED PIPE UNDERDRAIN, 4"
- ㉖ PROPOSED POLY. LEVELING BINDER (MACHINE METHOD), IL-4.75, N50, 3/4"



SUBGRADE TREATMENT PLAN NOTES

POROUS GRANULAR EMBANKMENT, SUBGRADE (PGES) HAS BEEN RECOMMENDED FOR USE AT THE LOCATIONS INDICATED FOR SOILS THAT TEND TO BE UNSUITABLE OR UNSTABLE. THE ACTUAL NEED FOR REMOVAL AND REPLACEMENT WITH PGES WILL BE DETERMINED IN THE FIELD AT THE TIME OF CONSTRUCTION BY THE GEOTECHNICAL ENGINEER. ALL POTENTIALLY UNSTABLE SOILS SHOULD BE TESTED WITH A STATIC CONE PENETROMETER AND TREATED IN ACCORDANCE WITH ARTICLE 301.03 AND THE UNDERCUT GUIDELINES IN THE IDOT SUBGRADE STABILITY MANUAL. IF UNSTABLE AND/OR UNSUITABLE MATERIAL IS ENCOUNTERED, THE SOIL SHALL BE REMOVED AND REPLACED WITH PGES AS DETERMINED BY THE GEOTECHNICAL ENGINEER. IF UNSTABLE AND/OR UNSUITABLE MATERIAL IS NOT ENCOUNTERED, THEN THE QUANTITY SHALL BE DEDUCTED AND NO ADDITIONAL COMPENSATION WILL BE DUE TO THE CONTRACTOR.

- 1- PROPOSED 12 INCH AGGREGATE SUBGRADE SUFFICIENT AT ALL STATIONS EXCEPT AS SHOWN.
- 2- DEPTH REFERS TO DEPTH OF REMEDIAL TREATMENT BELOW AGGREGATE SUBGRADE.
- 3- REPLACEMENT MATERIAL OR TREATMENT:

EMBANKMENT MATERIAL AND PLACEMENT IN ACCORDANCE WITH SECTIONS 205, 206, 507 AND 210
PGES- POROUS GRANULAR EMBANKMENT, SUBGRADE
FABRIC- GEOTECHNICAL FABRIC

LOCATION	DEPTH INCHS	TREATMENT WIDTH	TREATMENT MATERIAL
IL RTE. 120			
STA 96+00 TO STA 99+70 - EB	12 INCH	PROP. WIDENING	PGES
STA 107+48 TO STA 108+98 - WB	-	PROP. WIDENING	GEO. FABRIC

MIXTURE REQUIREMENTS		
PAY ITEM	AC TYPE	VOIDS
HOT-MIX ASPHALT SHOULDER, 8"	PG 64-22 *	2 % @ 30 GYR.
HOT-MIX ASPHALT REPLACEMENT OVER PATCHES (HMA BINDER IL-19 MM)	PG 64-22 *	4 % @ 70 GYR.
CLASS D PATCHES (HMA BINDER IL-19 MM)	PG 64-22 *	4 % @ 70 GYR.
POLY. HOT-MIX ASPHALT, CONC. BINDER CSE, IL-19, N90	SBS/SBR PG 70-22	4 % @ 90 GYR.
POLY. HOT-MIX ASPHALT SURFACE COURSE, MIX "F", N90, 1-3/4"	SBS/SBR PG 70-22	4 % @ 90 GYR.
HOT-MIX ASPHALT BASE COURSE (HMA IL-19 MM), 10"	PG 64-22 *	4 % @ 50 GYR.
POLY. LEVELING BINDER (MM), IL 4.75, N50, 3/4"	SBS/SBR PG76-28/22	4 % @ 50 GYR.

NOTE 1: THE UNIT WEIGHT USED TO CALCULATE ALL HOT-MIX ASPHALT SURFACE MIXTURE IS 112 LBS/SQYD/IN
* NOTE 2: WHEN RAP EXCEEDS 20%, THE NEW ASPHALT BINDER IN THE MIX SHALL BE PG 58-22

REVISIONS	
NAME	DATE

ILLINOIS DEPARTMENT OF TRANSPORTATION
TYPICAL CROSS SECTION
IL. RTE. 120 (BELVIDERE ROAD)
@ HUNT CLUB ROAD

SCALE: VERT. / HORIZ. / DATE
DRAWN BY / CHECKED BY

Revised on 12/27/06 A.A

PLOT DATE = 12/27/2006
 FILE NAME = c:\p\proj\120\120\120\120.dgn
 PLOT SCALE = 1/8" = 1'-0"
 REFERENCE = SHEET 6

F.A.P. RTE.	SECTION	COUNTY	TOTAL SHEETS	SHEET NO.
342	(G&I) 1-N-1	LAKE COUNTY	70	37
STA.	TO STA.			
FED. ROAD DIST. NO.	ILLINOIS	FED. AID PROJECT		
CONTRACT NO. 62883				

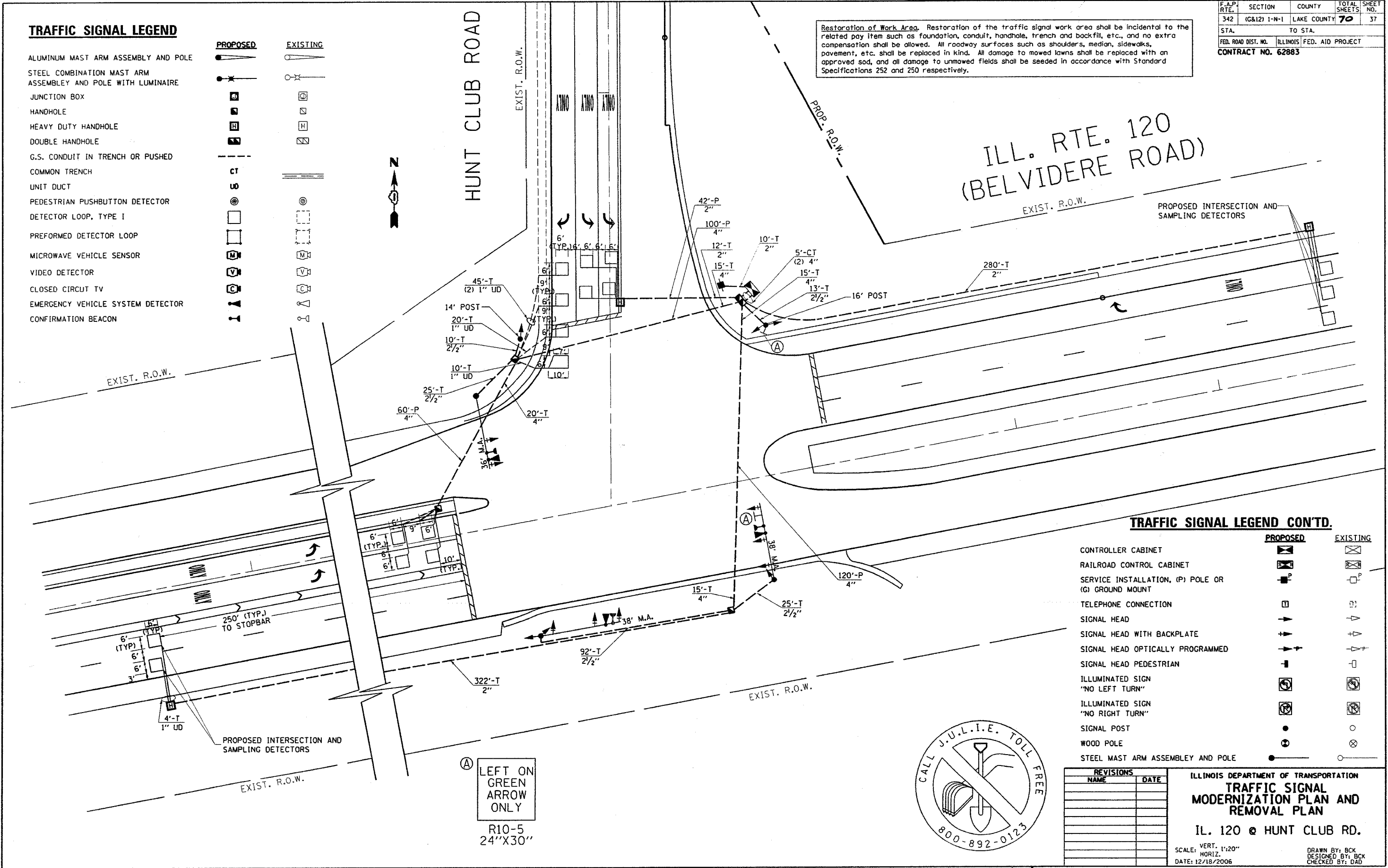
Restoration of Work Area. Restoration of the traffic signal work area shall be incidental to the related pay item such as foundation, conduit, handhole, trench and backfill, etc., and no extra compensation shall be allowed. All roadway surfaces such as shoulders, median, sidewalks, pavement, etc. shall be replaced in kind. All damage to mowed lawns shall be replaced with an approved sod, and all damage to unmowed fields shall be seeded in accordance with Standard Specifications 252 and 250 respectively.

TRAFFIC SIGNAL LEGEND

- | | | |
|---|--|--|
| ALUMINUM MAST ARM ASSEMBLY AND POLE | | |
| STEEL COMBINATION MAST ARM ASSEMBLY AND POLE WITH LUMINAIRE | | |
| JUNCTION BOX | | |
| HANDHOLE | | |
| HEAVY DUTY HANDHOLE | | |
| DOUBLE HANDHOLE | | |
| G.S. CONDUIT IN TRENCH OR PUSHED | | |
| COMMON TRENCH | | |
| UNIT DUCT | | |
| PEDESTRIAN PUSHBUTTON DETECTOR | | |
| DETECTOR LOOP, TYPE I | | |
| PERFORMED DETECTOR LOOP | | |
| MICROWAVE VEHICLE SENSOR | | |
| VIDEO DETECTOR | | |
| CLOSED CIRCUIT TV | | |
| EMERGENCY VEHICLE SYSTEM DETECTOR | | |
| CONFIRMATION BEACON | | |

TRAFFIC SIGNAL LEGEND CONT'D.

- | | | |
|--|--|--|
| CONTROLLER CABINET | | |
| RAILROAD CONTROL CABINET | | |
| SERVICE INSTALLATION, (P) POLE OR (G) GROUND MOUNT | | |
| TELEPHONE CONNECTION | | |
| SIGNAL HEAD | | |
| SIGNAL HEAD WITH BACKPLATE | | |
| SIGNAL HEAD OPTICALLY PROGRAMMED | | |
| SIGNAL HEAD PEDESTRIAN | | |
| ILLUMINATED SIGN "NO LEFT TURN" | | |
| ILLUMINATED SIGN "NO RIGHT TURN" | | |
| SIGNAL POST | | |
| WOOD POLE | | |
| STEEL MAST ARM ASSEMBLY AND POLE | | |

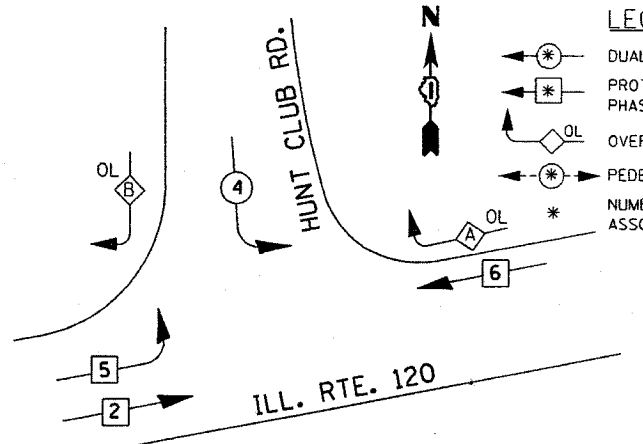


PLOT DATE = 12/18/2006
 FILE NAME = n:\projects\120\120\120\120.dgn
 PLOT SCALE = 42,3529' / IN.
 USER NAME = kenthphaybo

REVISIONS	
NAME	DATE

ILLINOIS DEPARTMENT OF TRANSPORTATION
TRAFFIC SIGNAL MODERNIZATION PLAN AND REMOVAL PLAN
 IL. 120 @ HUNT CLUB RD.
 SCALE: VERT. 1"=20"
 HORIZ. DATE: 12/18/2006
 DRAWN BY: BCK
 DESIGNED BY: BCK
 CHECKED BY: DAD

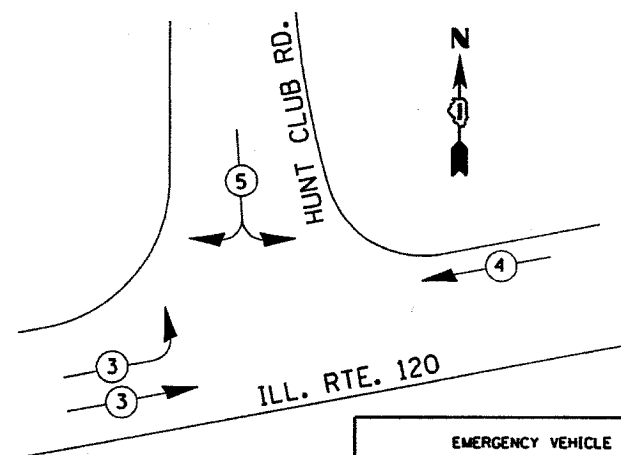
Revised on 12/18/06 A.A



PHASE DESIGNATION DIAGRAM

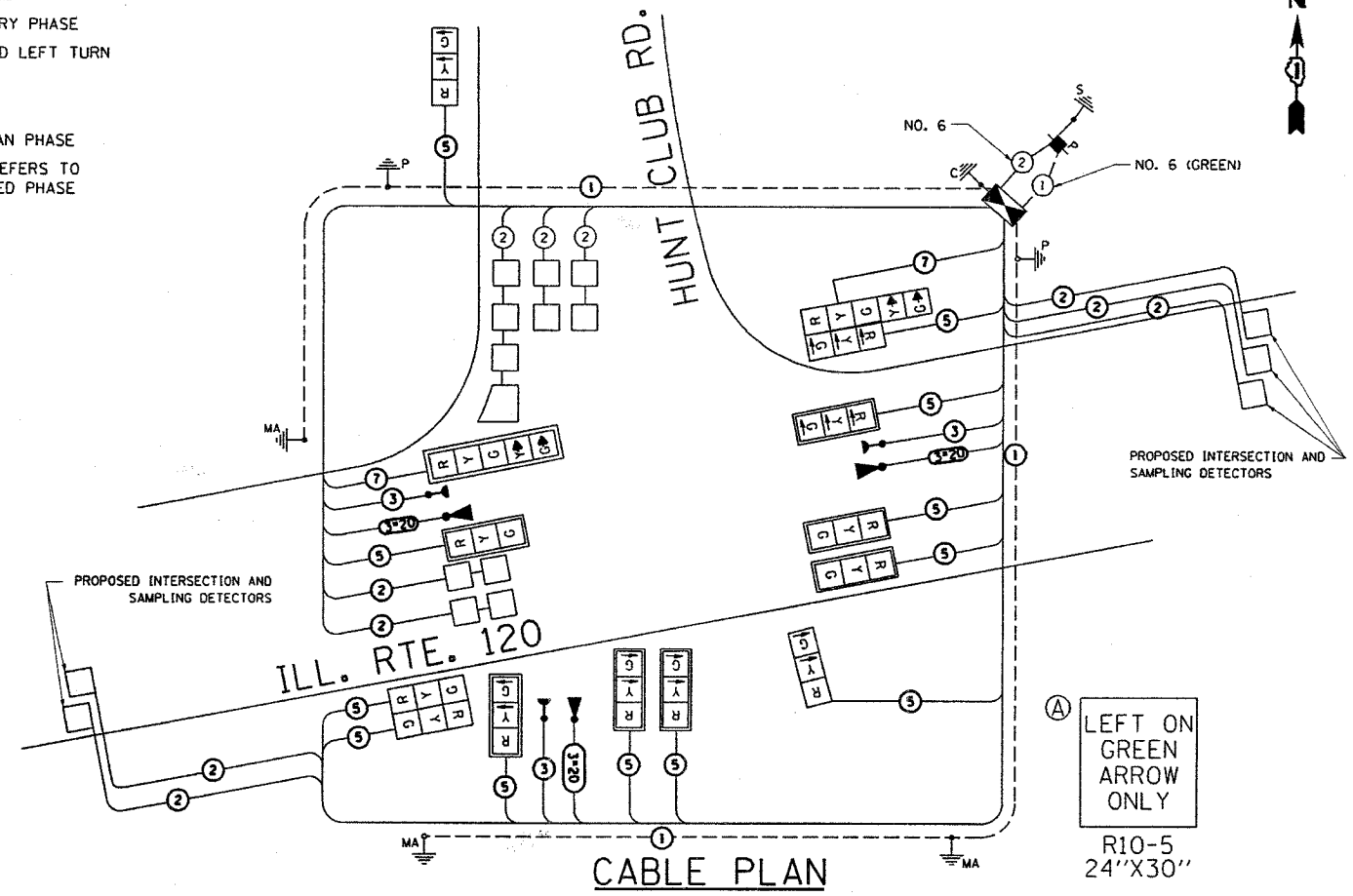
OVERLAP LETTER	PERMISSIVE PHASE	PROTECTED PHASE
A	= 6	+ 4
B	= 4	+ 5

EMERGENCY VEHICLE PREEMPTION SEQUENCE



EMERGENCY VEHICLE PREEMPTORS			
EMERGENCY VEHICLE PREEMPTOR	3	4	5
MOVEMENT			

- LEGEND**
- DUAL ENTRY PHASE
 - PROTECTED LEFT TURN PHASE
 - OVERLAP
 - PEDESTRIAN PHASE
 - NUMBER REFERS TO ASSOCIATED PHASE



CABLE PLAN LEGEND

- | | | | | | | |
|--|--|--|----------|--|----------|--|
| | CONTROLLER CABINET | | PROPOSED | | EXISTING | 12" (300mm) RED WITH 8" (200mm) YELLOW AND GREEN TRAFFIC SIGNAL FACE |
| | RAILROAD CONTROL CABINET | | PROPOSED | | EXISTING | 12" (300mm) TRAFFIC SIGNAL SECTION |
| | SERVICE INSTALLATION, (P) POLE OR (G) GROUND MOUNT | | PROPOSED | | EXISTING | 12" (300mm) PEDESTRIAN SIGNAL SECTION |
| | TELEPHONE CONNECTION | | PROPOSED | | EXISTING | ILLUMINATED SIGN "NO LEFT TURN" |
| | GROUND ROD AT (C) CONTROLLER, (H) HANDHOLE, (P) POST, (M) MAST ARM, OR (S) SERVICE | | PROPOSED | | EXISTING | ILLUMINATED SIGN "NO RIGHT TURN" |
| | FIBER OPTIC CABLE IN CONDUIT, NUMBER OF FIBERS AS NOTED | | PROPOSED | | EXISTING | PUSHBUTTON DETECTOR |
| | ELECTRIC CABLE IN CONDUIT, NO. 14, UNLESS OTHERWISE NOTED. NUMBER OF CONDUCTORS AS NOTED | | PROPOSED | | EXISTING | DETECTOR LOOP |
| | GROUND CABLE IN CONDUIT NO. 6 COPPER (GREEN) | | PROPOSED | | EXISTING | PERFORMED DETECTOR LOOP |
| | SIGNAL FACE WITH BACKPLATE. "P" INDICATES PROGRAMMED HEAD | | PROPOSED | | EXISTING | MICROWAVE VEHICLE SENSOR |
| | | | PROPOSED | | EXISTING | VIDEO DETECTOR |
| | | | PROPOSED | | EXISTING | CLOSED CIRCUIT TV |
| | | | PROPOSED | | EXISTING | EMERGENCY VEHICLE SYSTEM DETECTOR |
| | | | PROPOSED | | EXISTING | CONFIRMATION BEACON |

ITEM	UNIT	QUANTITY
TRAFFIC CONTROL AND PROTECTION, STANDARD 701501	L SUM	1
TRAFFIC CONTROL AND PROTECTION, STANDARD 701701	L SUM	1
TRAFFIC CONTROL AND PROTECTION, STANDARD 701801	L SUM	1
SIGN PANEL - TYPE 2	SO. FT.	31.75
CONDUIT IN TRENCH, 2" DIA., GALVANIZED STEEL	FOOT	624
CONDUIT IN TRENCH, 2 1/2" DIA., GALVANIZED STEEL	FOOT	165
CONDUIT IN PUSH, 4" DIA., GALVANIZED STEEL	FOOT	280
CONDUIT IN TRENCH, 4" DIA., GALVANIZED STEEL	FOOT	65
HANDHOLE	EACH	3
HEAVY-DUTY HANDHOLE	EACH	3
DOUBLE HANDHOLE	EACH	1
TRENCH AND BACKFILL FOR ELECTRICAL WORK	FOOT	934
FULL-ACTUATED CONTROLLER AND TYPE IV CABINET	EACH	1
ELECTRIC CABLE IN CONDUIT, SIGNAL NO. 14 5C	FOOT	3024.5
ELECTRIC CABLE IN CONDUIT, SIGNAL NO. 14 7C	FOOT	206.5
ELECTRIC CABLE IN CONDUIT, LEAD-IN, NO. 14 1 PAIR	FOOT	1275
ELECTRIC CABLE IN CONDUIT, SERVICE, NO. 6 2C	FOOT	10
ELECTRIC CABLE IN CONDUIT, GROUNDING, NO. 6 1C	FOOT	751.5
TRAFFIC SIGNAL POST, GALVANIZED STEEL 14FT.	EACH	1
TRAFFIC SIGNAL POST, GALVANIZED STEEL 16FT.	EACH	1
STEEL MAST ARM ASSEMBLY AND POLE, 36 FT.	EACH	1
STEEL MAST ARM ASSEMBLY AND POLE, 38 FT.	EACH	2
CONCRETE FOUNDATION, TYPE A	FOOT	4
CONCRETE FOUNDATION, TYPE D	FOOT	4
CONCRETE FOUNDATION, TYPE E 30-INCH DIA.	FOOT	30
CONCRETE FOUNDATION, TYPE E 36-INCH DIA.	FOOT	15
SIGNAL HEAD, L.E.D. 2-FACE, 3 SECTION, BRACKET MNTD.	EACH	1
SIGNAL HEAD, L.E.D. 2-FACE, 1-3 SECT., 1-5 SECT. MAST ARM MNTD.	EACH	1
SIGNAL HEAD, L.E.D. 1-FACE, 3 SECTION, MAST ARM MNTD.	EACH	7
SIGNAL HEAD, L.E.D. 1-FACE, 5 SECTION, MAST ARM MNTD.	EACH	1
SIGNAL HEAD, L.E.D. 1-FACE, 3 SECTION, BRACKET MNTD.	EACH	2
INDUCTIVE LOOP DETECTOR	EACH	10
DETECTOR LOOP, TYPE I	FOOT	610
SERVICE INSTALLATION, POLE MOUNT REMOVE EXISTING TRAFFIC SIGNAL EQUIPMENT	EACH	1
* LIGHT DETECTOR	EACH	3
* LIGHT DETECTOR AMPLIFIER	EACH	1
* ELECTRIC CABLE IN CONDUIT, SIGNAL, NO. 14 3C	FOOT	800
* ELECTRIC CABLE IN CONDUIT, NO. 20 3/C, TWISTED, SHIELDED	FOOT	800

I.D.O.T. TRAFFIC SIGNAL INSTALLATION ELECTRICAL SERVICE REQUIREMENTS					TOTAL
TYPE	NO. LAMPS	WATTAGE (INCAND.)	LED	% OPERATION	WATTAGE
SIGNAL (RED)	14	135	17	0.50	119.00
(YELLOW)	16	135	25	0.25	100.00
(GREEN)	16	135	15	0.25	60.00
ARROW	20	135	12	0.10	24.00
PED. SIGNAL		90	25	1.00	
CONTROLLER	1	100	100	1.00	100.00
ILLUM. SIGN		84		0.05	
FLASHER				0.50	
ENERGY COSTS TO:					TOTAL = 403.00

FOUNDATION	DEPTH	FT. (m)	CABLE SLACK	FT. (m)	VERTICAL	FT. (m)
TYPE A - POST	4	(1.2)	HANDHOLE	6.5	(2.0)	ALL FOUNDATIONS
D - CONTROLLER	4	(1.2)	DOUBLE HANDHOLE	13	(4.0)	MAST ARM (L) POLE
E - M. ARM POLE			SIGNAL POST	2	(1.0)	20" H-L-2" (6m H-L-0.6m)
	24"	(600mm)	CONTROLLER CAB.	1	(0.5)	BRACKET MOUNTED
	30"	(750mm)	FIBER OPTIC	13	(4.0)	PED. PUSHBUTTON
	36"	(900mm)	ELECTRIC SERVICE	1	(0.5)	ELECTRIC SERVICE
			GROUND CABLE	1	(0.5)	SERVICE TO GROUND
						POST MOUNTED

REVISIONS	
NAME	DATE

ILLINOIS DEPARTMENT OF TRANSPORTATION
CABLE PLAN, PHASE DESIGNATION DIAGRAM AND SCHEDULE OF QUANTITIES
 IL. 120 @ HUNT CLUB RD.
 SCALE: VERT. 1"=20'
 SCALE: HORIZ. DATE 12/19/2006
 DRAWN BY: BCK
 DESIGNED BY: BCK
 CHECKED BY: DAD

Revised on 12/18/06 A.A

12/19/2006
 c:\projects\120at\120at\120at\120at\120at.dgn
 konthapkhaybc