

62969

FAP RTE.	SECTION	COUNTY	TOTAL SHEETS	SHEET NO.
330	(102 & 102X) LS	COOK	14	1

STATE OF ILLINOIS
DEPARTMENT OF TRANSPORTATION
DIVISION OF HIGHWAYS

PLANS FOR PROPOSED HIGHWAY
F.A.P. 330 U.S. ROUTE 12/20/45 (LAGRANGE ROAD)
IL. ROUTE 171 (ARCHER AVENUE) TO NORTH OF
CAL SAG CHANNEL AND ORLAND TOWNSHIP IN
UNINCORPORATED COOK COUNTY
SECTION: (102 & 102X) LS
LANDSCAPING /FOREST MANAGEMENT
COOK COUNTY
C-91-227-05

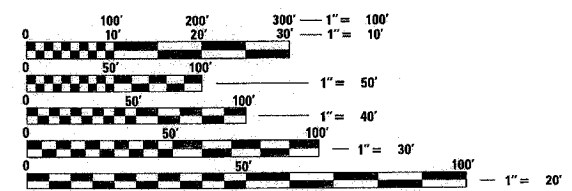
INDEX OF SHEETS

- 1 TITLE SHEET
LOCATION MAPS
INDEX OF SHEETS
HIGHWAY STANDARDS
- 2 SUMMARY OF QUANTITIES
- 3 SCHEDULE OF LANDSCAPE ITEMS
GENERAL NOTES
- 4 CALENDAR OF LANDSCAPE
CONSTRUCTION AND
ESTABLISHMENT WORK
- 5--9 LANDSCAPING PLANS
U.S. 12/20/45 (LA GRANGE ROAD)
- 10 RAMP F LANDSCAPE PLAN
- 11 TREE MITIGATION PLAN
SCHEDULE OF QUANTITIES
(TREE MITIGATION SITE ONLY)
- 12 FPDCC DEVELOPMENT PLAN
TREE GROUPING KEY A
- 13--14 TREE GROUPING KEYS B - E

LIST OF IDOT HIGHWAY STANDARDS

- 701001-01
- 702001-06
- 701101-01
- 701006-02
- 701106-01
- 701311-02
- 701426-01

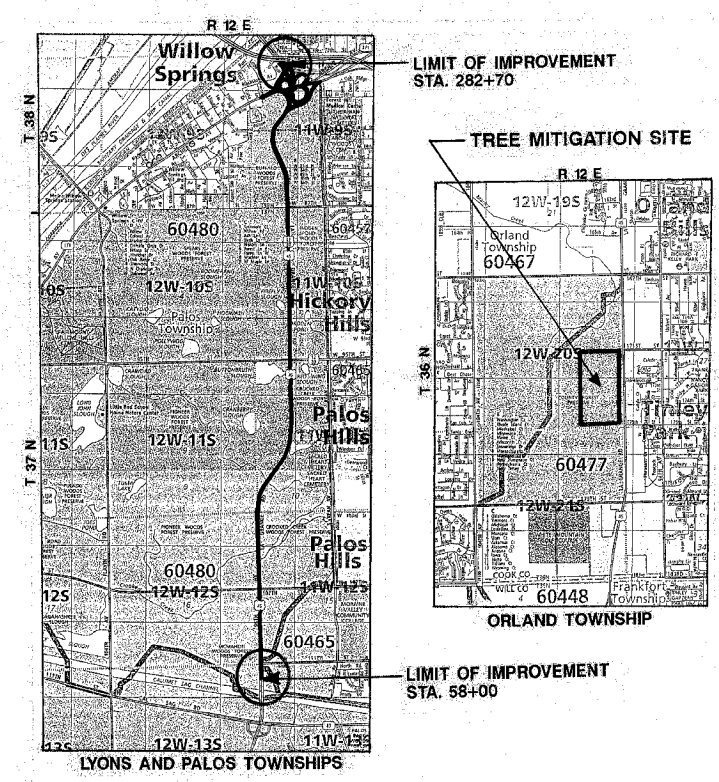
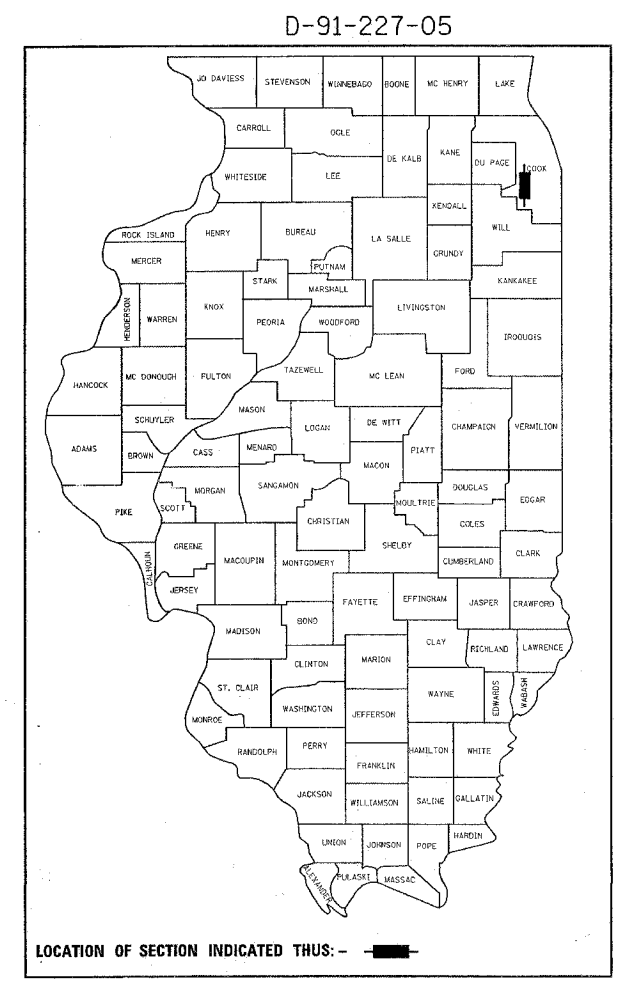
IMPROVEMENT IS LOCATED
IN THE VILLAGE OF WILLOW
SPRINGS AND UNINCORPORATED
COOK COUNTY



FULL SIZE PLANS HAVE BEEN PREPARED USING STANDARD
ENGINEERING SCALES. REDUCED SIZED PLANS WILL NOT
CONFORM TO STANDARD SCALES. IN MAKING MEASUREMENTS
ON REDUCED PLANS, THE ABOVE SCALES MAY BE USED.

J.U.L.I.E.
JOINT UTILITY LOCATION INFORMATION FOR EXCAVATION
1-800-892-0123

CONTRACT NO. 62969



LOCATION MAPS
SCALE: 1"=1300'
GROSS LENGTH OF PROJECT: 4.25 MILES
NET LENGTH OF PROJECT: 4.25 MILES

STATE OF ILLINOIS
DEPARTMENT OF TRANSPORTATION
DIVISION OF HIGHWAYS

SUBMITTED OCT. 26 20 05

Diane M. O'Keefe / cd
DEPUTY DIRECTOR OF HIGHWAYS, REGION ENGINEER

December 9, 20 05
Mike Hine / ED
ENGINEER OF DESIGN AND ENVIRONMENT

December 9, 20 05
Eric Harrah / ED
DEPUTY DIRECTOR OF HIGHWAYS, CHIEF ENGINEER

**PRINTED BY THE AUTHORITY
OF THE STATE OF ILLINOIS**

DISTRICT ONE - BUREAU OF MAINTENANCE
MAINTENANCE LANDSCAPE DESIGNER: R. WANNER / S. LIPKIE (847) 705-4171