

# EXISTING HORIZONTAL & VERTICAL CONTROL

CONTRACT NO. 64602

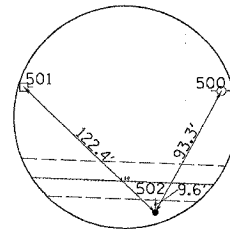
F.A.I. RTE.	SECTION	COUNTY	TOTAL SHEETS	SHEET NO.
80	37-1HBR-1	HENRY	133	25
STA.		TO STA.		
FED. ROAD DIST. NO.		ILLINOIS	FED. AID PROJECT	

## REFERENCE TIES

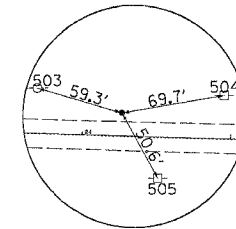
POINT	CHAIN	STATION	OFFSET	DESCRIPTION
500	POPPYGAR	14+64.9235	63.2258' LT	TELEPHONE POLE, SHINER
501	POPPYGAR	13+31.8807	60.5738' LT	POWER POLE, SHINER
502	POPPYGAR	14+23.5404	10.7912' RT	PAVEMENT STATION NUMBER
503	POPPYGAR	23+68.8689	30.2119' LT	TELEPHONE POLE, SHINER
504	POPPYGAR	24+94.9276	29.0477' LT	POWER POLE, SHINER
505	POPPYGAR	24+51.9119	28.0442' RT	POWER POLE, SHINER
506	POPPYGAR	36+93.2005	28.8850' RT	POWER POLE, SHINER
507	POPPYGAR	36+64.5999	24.2374' LT	POWER POLE, SHINER
508	POPPYGAR	36+70.7723	8.7050' RT	PAVEMENT STATION NUMBER
509	POPPYGAR	44+11.9483	57.9156' LT	POWER POLE, SHINER
510	POPPYGAR	44+18.3356	34.6144' LT	2.5' PIPE CULVERT, END
511	POPPYGAR	44+77.1837	19.2942' LT	GUARDRAIL STEEL PLATE BEAM, END
512	POPPYGAR	44+60.7620	281.3437' LT	FENCE POST, SHINER
513	POPPYGAR	44+81.7516	235.6667' LT	MANHOLE LID, CENTER
514	POPPYGAR	44+41.7224	264.5211' LT	PIPE CULVERT, END
515	POPPYGAR	49+60.4159	279.3365' LT	R.O.W MARKER, BACK
516	POPPYGAR	49+92.6056	253.3659' LT	MANHOLE LID, CENTER
517	POPPYGAR	50+39.0234	231.7599' LT	WATER BUFFALO BOX, CENTER
518	POPPYGAR	47+27.0402	17.3288' RT	GUARDPOST, SHINER
519	POPPYGAR	47+39.6658	17.3667' RT	GUARDPOST, SHINER
520	POPPYGAR	47+52.1007	17.3658' RT	GUARDPOST, SHINER
521	POPPYGAR	49+76.9450	17.2013' RT	GUARDPOST, SHINER
522	POPPYGAR	49+64.4525	17.1671' RT	GUARDPOST, SHINER
523	POPPYGAR	49+51.9725	17.1037' RT	GUARDPOST, SHINER
524	POPPYGAR	50+53.3452	77.2222' LT	POWER POLE, SHINER
525	POPPYGAR	51+06.1066	90.2731' LT	GUARDPOST, SHINER
526	POPPYGAR	51+05.3544	121.3087' LT	GUARDPOST, SHINER
527	POPPYGAR	52+41.6713	83.3285' RT	GUARDPOST, SHINER
528	POPPYGAR	52+41.9504	95.8365' RT	GUARDPOST, SHINER
529	POPPYGAR	52+42.2287	108.3556' RT	GUARDPOST, SHINER
530	POPPYGAR	54+70.6406	17.2340' RT	GUARDPOST, SHINER
531	POPPYGAR	54+58.1089	17.3596' RT	GUARDPOST, SHINER
532	POPPYGAR	54+45.6460	17.3609' RT	GUARDPOST, SHINER
533	POPPYGAR	58+46.5472	59.8731' RT	POWER POLE, SHINER
534	POPPYGAR	58+70.9977	18.4524' RT	GUARDRAIL STEEL PLATE BEAM, END
535	POPPYGAR	58+71.0720	19.9587' LT	GUARDRAIL STEEL PLATE BEAM, END
536	POPPYGAR	64+90.5034	24.6204' RT	POWER POLE WITH TRANSFORMER, SHINER
537	POPPYGAR	64+79.6339	32.4368' LT	FENCE POST, SHINER
538	POPPYGAR	64+94.7941	33.6483' LT	GATE POST, SHINER
539	POPPYGAR	75+39.9799	34.3841' LT	TELEPHONE POLE, SHINER
540	POPPYGAR	76+12.5233	34.0934' LT	TELEPHONE POLE, SHINER
541	POPPYGAR	76+44.2948	33.5346' LT	POWER POLE WITH TRANSFORMER, SHINER
542	POPPYGAR	81+30.4915	68.4219' RT	POWER POLE, SHINER
543	POPPYGAR	81+35.3302	72.6643' RT	FENCE POST, SHINER
544	POPPYGAR	81+84.3781	17.9608' RT	MAILBOX, SHINER

## HORIZONTAL CONTROL POINTS

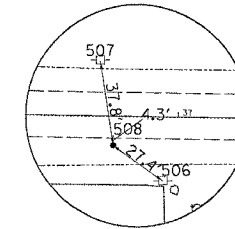
POINT	NORTH	EAST	ELEVATION	CHAIN	STATION	OFFSET	DESCRIPTION
1	1749281.9650	2245671.4700	581.2690	POPPYGAR	14+23.6408	20.4113' RT	SURVEY POINT, PIN
2	1749277.5440	2246674.8140	606.8210	POPPYGAR	24+26.4557	15.6606' LT	SURVEY POINT, PIN
3	1749224.3370	2247918.2300	608.5170	POPPYGAR	36+70.8509	13.0433' RT	SURVEY POINT, PIN
4	1749240.8120	2248682.3340	610.9080	POPPYGAR	44+34.5515	16.7524' LT	SURVEY POINT, PIN
5	1749232.9360	2248982.8660	619.6050	POPPYGAR	47+35.1751	14.1178' LT	SURVEY POINT, PIN
6	1749229.6010	2249217.0030	625.9200	POPPYGAR	49+69.3347	14.8658' LT	SURVEY POINT, PIN
7	1749470.9180	2248685.8000	609.1380	POPPYGAR	44+34.0047	246.8839' LT	SURVEY POINT, PIN
8	1749491.7630	2249282.7210	608.3690	POPPYGAR	50+30.4715	278.1339' LT	SURVEY POINT, PIN
9	1749316.7090	2249351.1770	607.3880	POPPYGAR	51+01.9694	104.3001' LT	SURVEY POINT, PIN
10	1749115.6250	2249431.9090	606.6160	POPPYGAR	51+86.1954	95.3456' RT	SURVEY POINT, PIN
11	1749220.9720	2249708.7020	623.9290	POPPYGAR	54+61.1094	14.8116' LT	SURVEY POINT, PIN
12	1749160.3890	2250190.5280	611.1710	POPPYGAR	59+43.9185	37.3608' RT	SURVEY POINT, PIN
13	1749206.8670	2250739.9940	610.2670	POPPYGAR	64+92.4906	18.6908' LT	SURVEY POINT, PIN
14	1749154.8390	2251840.6380	610.7130	POPPYGAR	75+92.3188	14.4519' LT	SURVEY POINT, PIN
15	1748824.1120	2252279.7290	606.7110	POPPYGAR	81+35.1644	26.8426' RT	SURVEY POINT, PIN



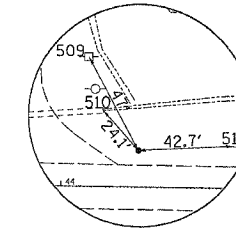
HORIZONTAL CONTROL POINT No. 1



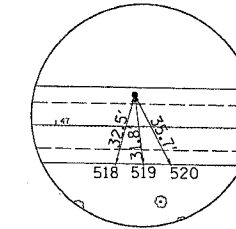
HORIZONTAL CONTROL POINT No. 2



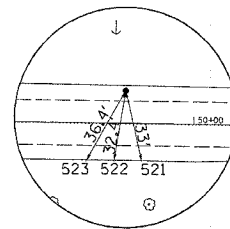
HORIZONTAL CONTROL POINT No. 3



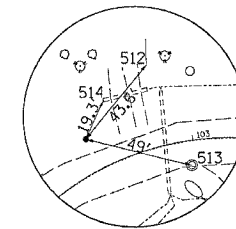
HORIZONTAL CONTROL POINT No. 4



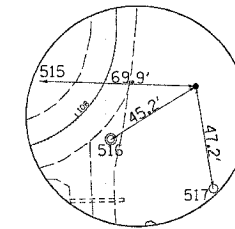
HORIZONTAL CONTROL POINT No. 5



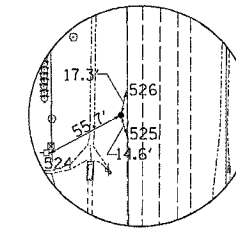
HORIZONTAL CONTROL POINT No. 6



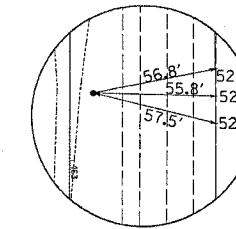
HORIZONTAL CONTROL POINT No. 7



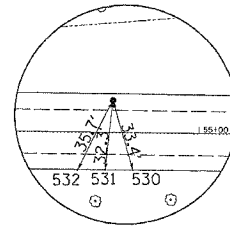
HORIZONTAL CONTROL POINT No. 8



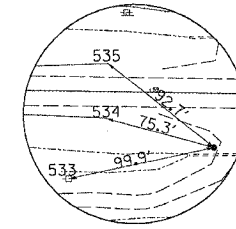
HORIZONTAL CONTROL POINT No. 9



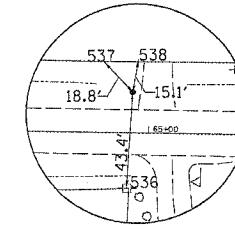
HORIZONTAL CONTROL POINT No. 10



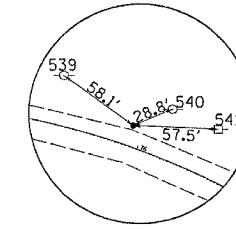
HORIZONTAL CONTROL POINT No. 11



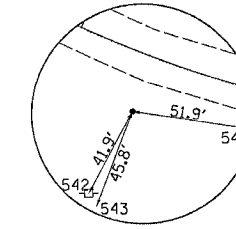
HORIZONTAL CONTROL POINT No. 12



HORIZONTAL CONTROL POINT No. 13



HORIZONTAL CONTROL POINT No. 14



HORIZONTAL CONTROL POINT No. 15

FILE NAME = 111111  
 LEVELS = 111111  
 PLOT SCALE = 1"=100'  
 OPERATOR = J. J. J.  
 REF. REF.

ILLINOIS DEPARTMENT OF TRANSPORTATION

## EXISTING HORIZONTAL & VERTICAL CONTROL