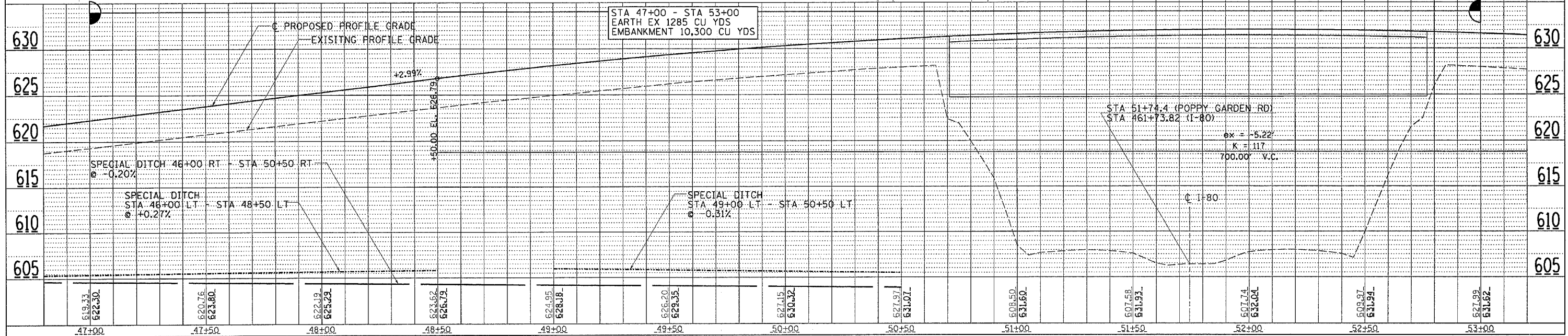
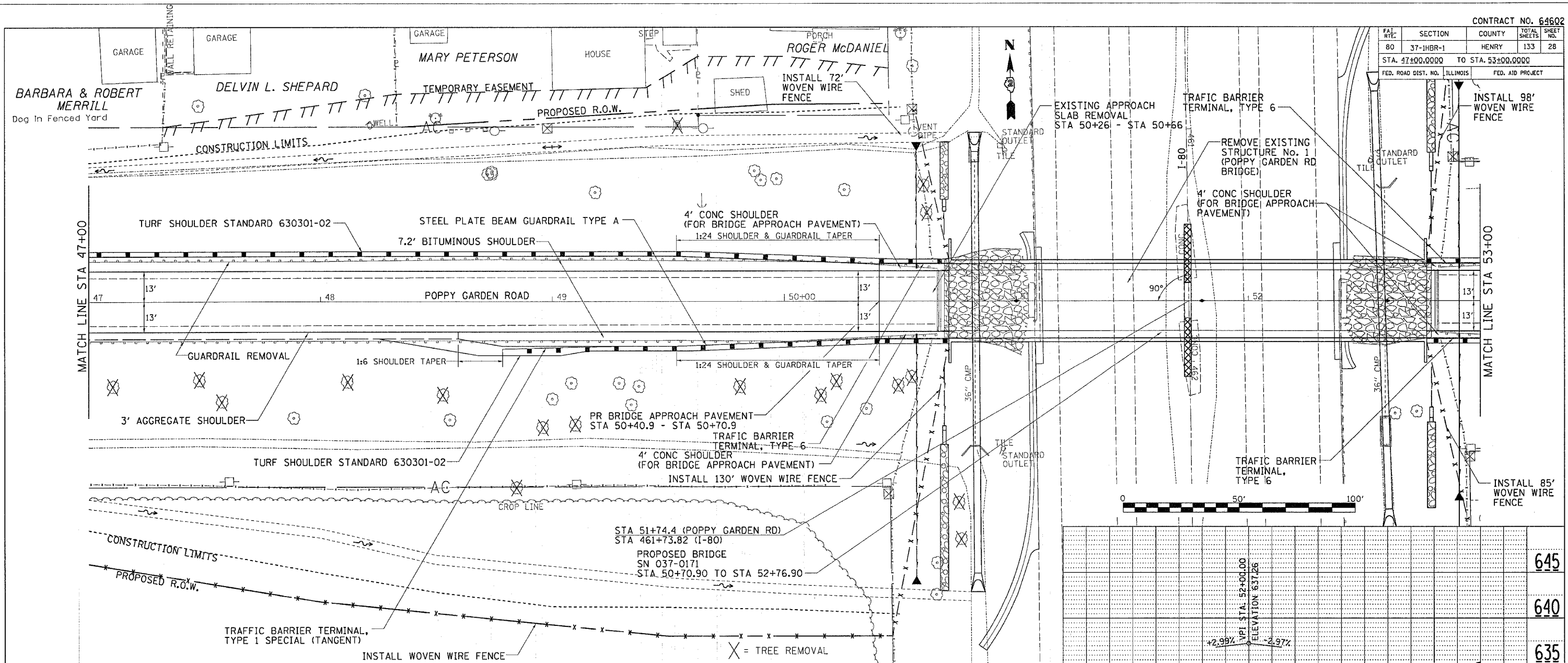


FAL NO.	SECTION	COUNTY	TOTAL SHEETS	SHEET NO.
80	37-1HBR-1	HENRY	133	28
STA. 47+00.0000		TO STA. 53+00.0000		
FED. ROAD DIST. NO. ILLINOIS		FED. AID PROJECT		



PLAN

DATE	
BY	
CHECKED	
APPROVED	

NOTE: SURVEYED, ALIGNED, CHECKED, AND FILED BY THE ENGINEER.

PROFILE

DATE	
BY	
CHECKED	
APPROVED	

NOTE: SURVEYED, GRADED, AND FILED BY THE ENGINEER.

DATE-TIME: 11:58 AM 11/11/11