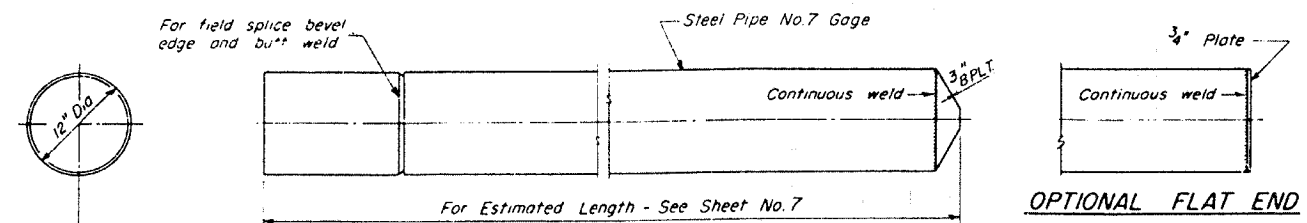
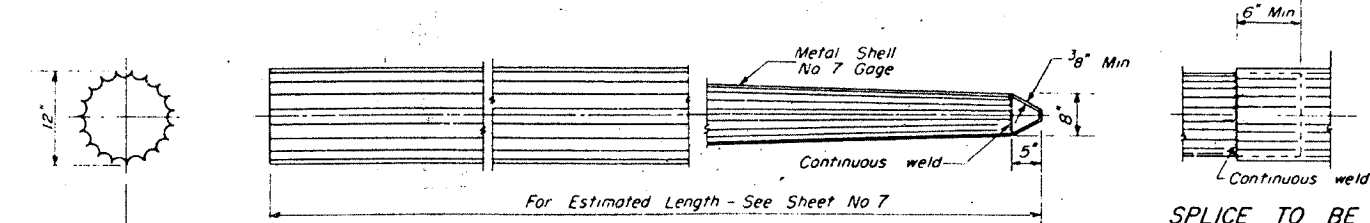


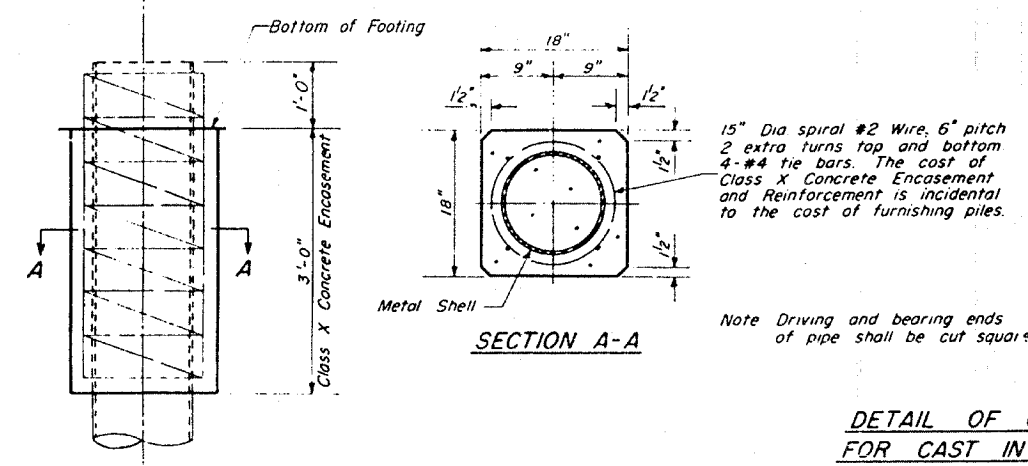
ROUTE NO	SECTION	COUNTY	TOTAL SHEETS	SHEET NO.
F.A.I. 80	37-IHB-1	HENRY	133	83
FED. ROAD DIST NO 7 ILLINOIS			FED. AID PROJ. NO.	



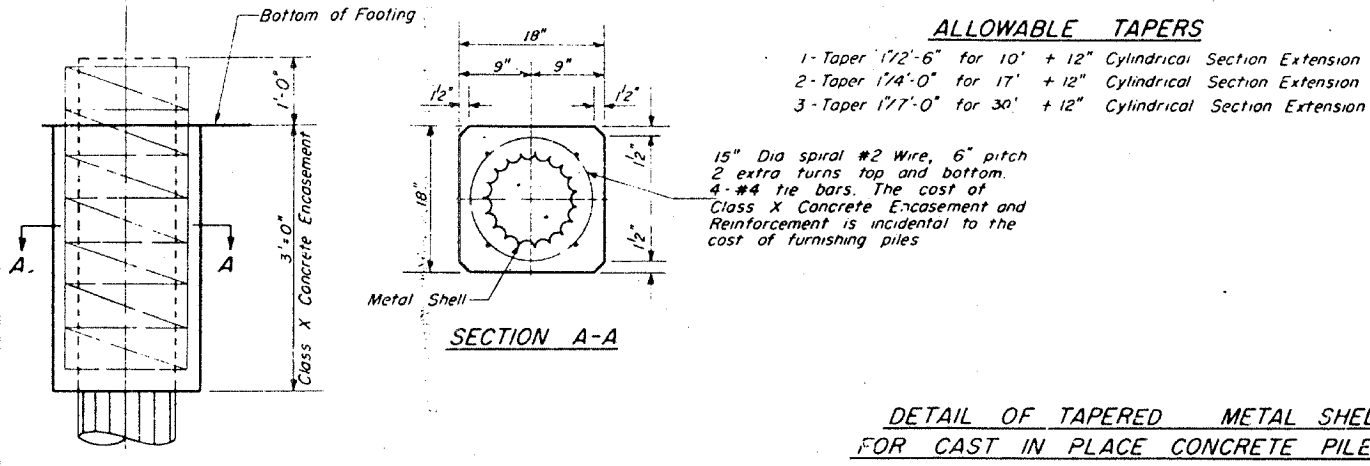
OPTIONAL FLAT END



SPLICE TO BE USED AS REQUIRED

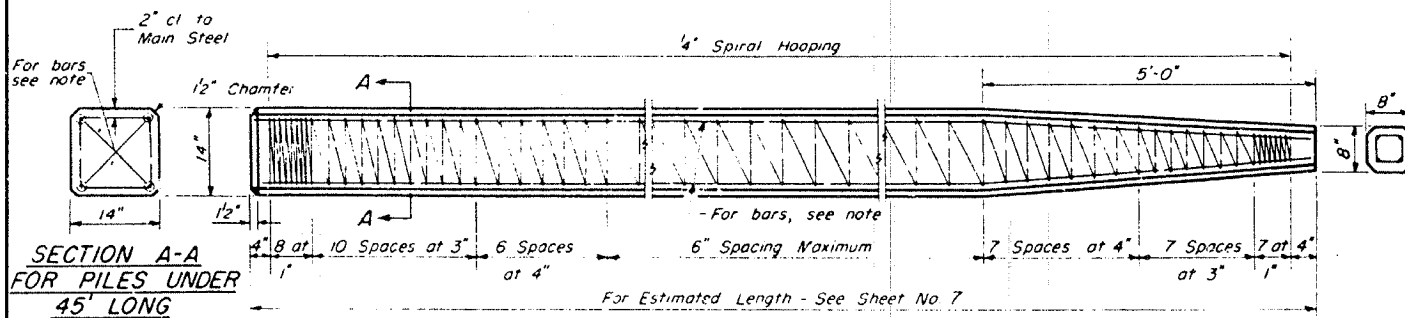


DETAIL OF CYLINDRICAL STEEL SHELL FOR CAST IN PLACE CONCRETE PILES

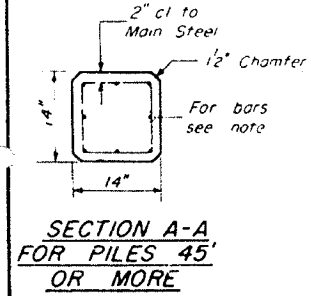


DETAIL OF TAPERED METAL SHELL FOR CAST IN PLACE CONCRETE PILES

- ALLOWABLE TAPERS**
- 1-Taper 1/2'-6" for 10' + 12" Cylindrical Section Extension
 - 2-Taper 1/4'-0" for 17' + 12" Cylindrical Section Extension
 - 3-Taper 1/7'-0" for 30' + 12" Cylindrical Section Extension



SECTION A-A FOR PILES UNDER 45' LONG



SECTION A-A FOR PILES 45' OR MORE

Note For 14" Piles 45' long or more use 8-#8 bars 4 for the full length and 4 to the point of bevel. For 14" Piles under 45' long use 4-#9 bars the full length.

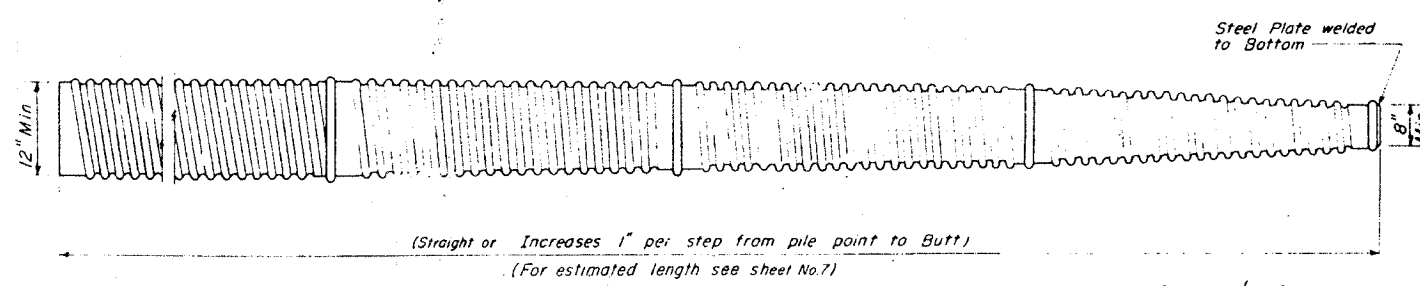
Handling For Pile lengths up to 45', use two slings placed at a distance of 0.21 L* from each end. For Piles longer than 45', use three slings placed at a distance of 0.12 L* from each end and at mid-point of pile.

*L = Over all length of pile to be handled

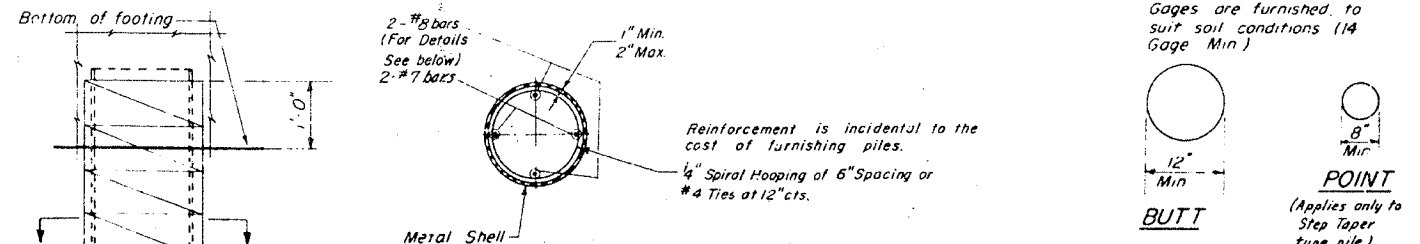
STATION 461 + 72.02
 BUILT 196 BY
 STATE OF ILLINOIS
 F.A.I. RT. 80 SEC. 37-IHB-1
 F.A. PROJ. I-80-1(53)
 LOADING H15 - S12

LETTERING FOR NAME PLATES
 STANDARD 2113

DETAIL OF PRECAST CONCRETE PILES



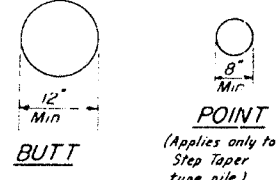
(Straight or Increases 1" per step from pile point to Butt)
 (For estimated length see sheet No.7)



SECTION A-A

DETAIL OF MANDREL DRIVEN STRAIGHT OR STEP TAPER PILES FOR CAST IN PLACE CONCRETE PILES

At least 1/4 of the length of pile shall have a Butt diameter equal to or greater than 12". Gages are furnished to suit soil conditions (14 Gage Min)



BUTT

POINT
 (Applies only to Step Taper type pile.)



DE LEUW, CATHAR & CO., ENGINEERS
 DESIGNED BY STD
 DRAWN BY STD
 CHECKED BY STD
 IN CHARGE E.S. MARTINS
 APPROVED L.N. RIAN

PILE DETAILS
 F.A.I. 80 SECTION 37-IHB-1
 F.A.I. 80 UNDER S.B.I.-7 (ALT.)
 HENRY COUNTY
 STATION 461 + 72.02
 SCALE: AS NOTED DATE: